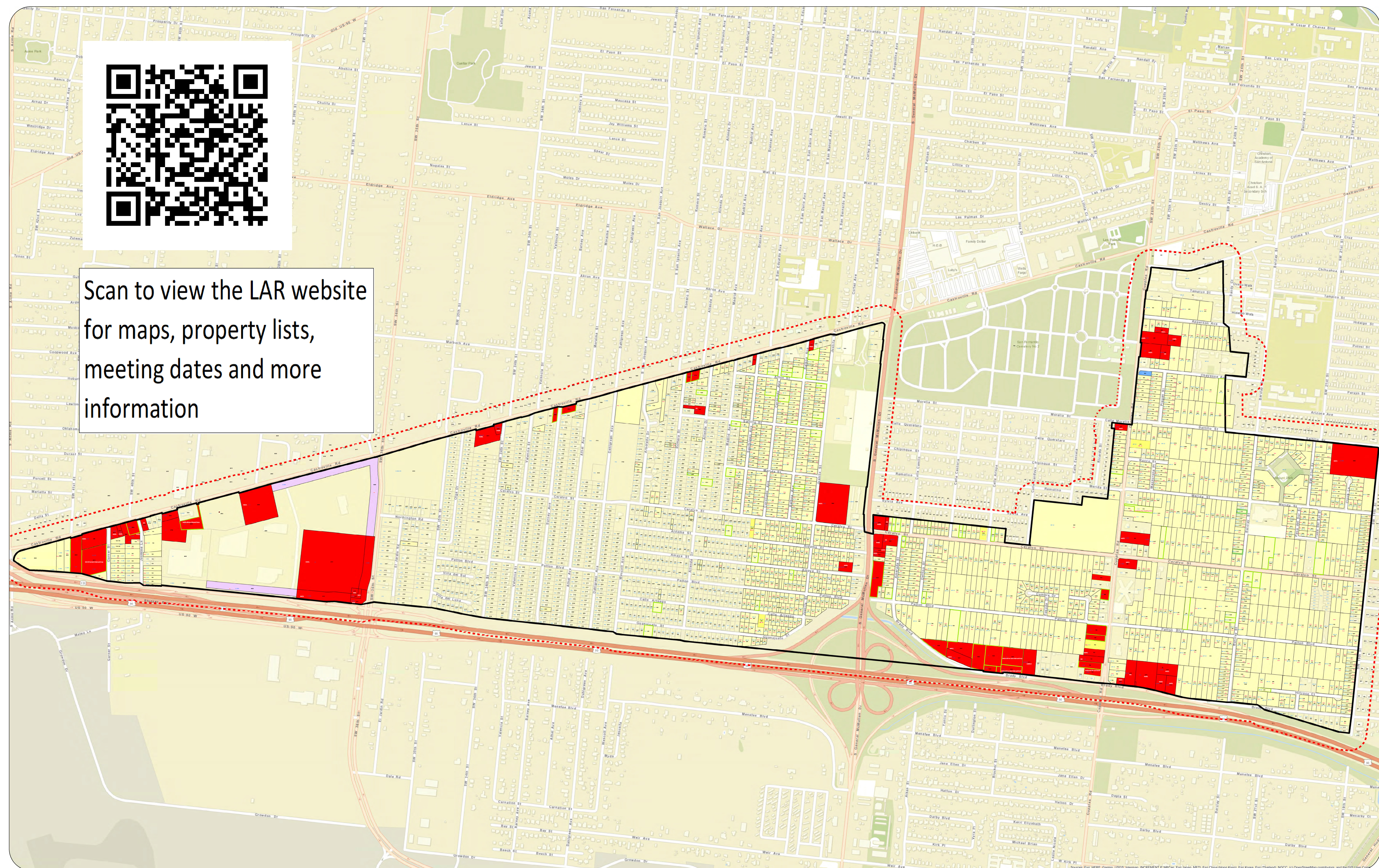




Scan to view the LAR website
for maps, property lists,
meeting dates and more
information



Sources: Esri, HERE, Garmin, USGS, Imagery, INCREMENT P, NRCan, Esri Japan, METI, Esri China (Hong Kong), Esri Korea, Esri (Thailand), NGCC, (c) OpenStreetMap contributors, and the GIS User Community

Large Area Rezoning

ZONING CASE #Z2022-10700304



Westwood Square

Council District 5
School District: Edgewood ISD & San Antonio ISD
Scale: 1" approx. = 333 feet
Subject Property Legal Description(s): As Noted in Map Subject Properties

**DEVELOPMENT
SERVICES**

200 Ft. Notification Area
Proposed Zoning
Current Zoning

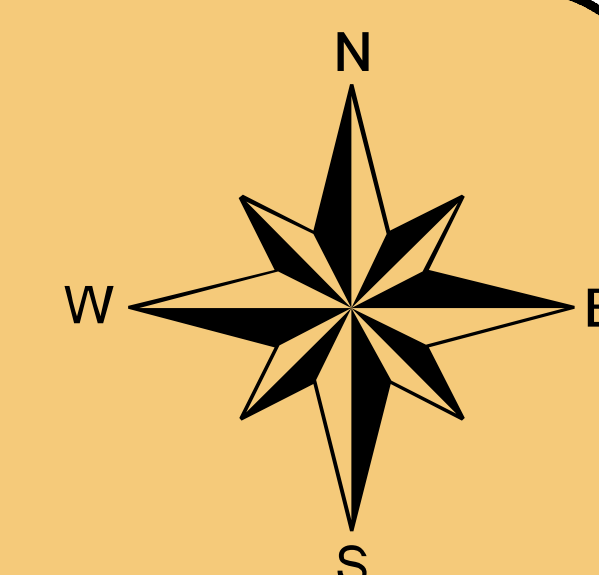


TEXT

TEXT

- Commercial
- Industrial
- Multi family Residential
- Residential
- Conditional Use
- IDZ

FINAL 6.6.2023



City of San Antonio
Senior Planner: Alfonso Camacho
Development Services Department