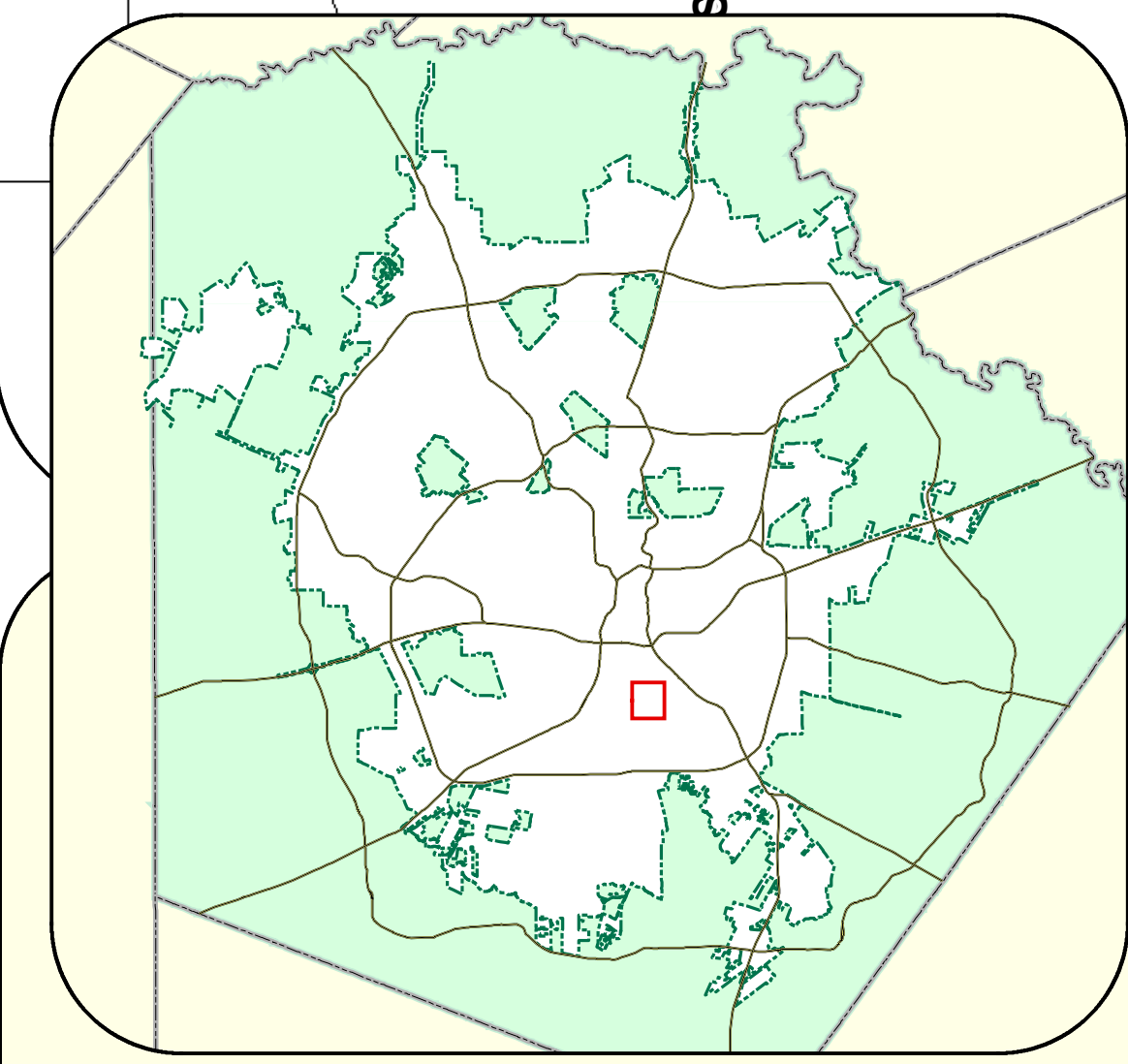
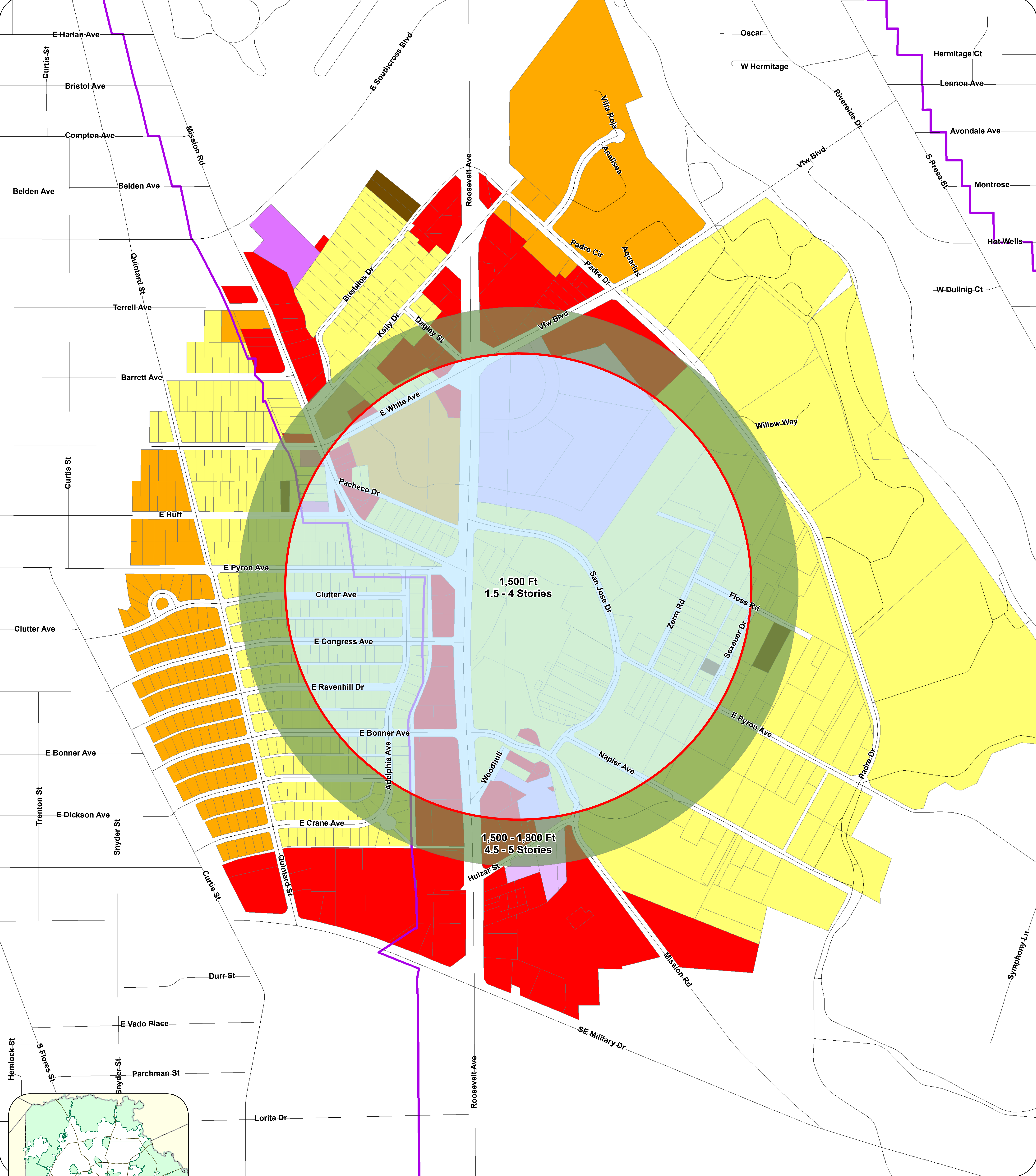


Date/Time Saved: 11/28/2022
PDF Filename: MPOD WH 1.pdf
Map Path: \\fsccommon\\fsccommon\\Misc29\\GIS\\P\\n50\\plan_lib\\Projects2022\\HistoricPreservation\\MPOD\\MPOD WH 1.mxd



Zoning Description		Farm and Ranch	Neighborhood Preservation	Exiting MPOD	Bexar County
Single-Family Residential	Development Reserve	Office	World Heritage Buffer	City of San Antonio	Expressways
Multi-Family Residential	Infill Development Zone	Mixed-Use Residential			Streets
Commercial	Manufactured Housing	Resource Protection			
Industrial	Neighborhood Commercial				

Data Source: City of San Antonio Enterprise GIS, Bexar Metro 911, Bexar Appraisal District

*This Geographic Information System Product, received from The City of San Antonio is provided "as is" without warranty of any kind, and the City of San Antonio expressly disclaims all express and implied warranties, including but not limited to the implied warranties of merchantability and fitness for a particular purpose. The City of San Antonio does not warrant, guarantee, or make any representations regarding the use, or the results of the use, of the information provided to you by the City of San Antonio in terms of correctness, accuracy, reliability, timeliness or otherwise. The entire risk as to the results and performance of any information obtained from the City of San Antonio is entirely assumed by the recipient.

Please contact the responsible City of San Antonio Department for specific determinations.

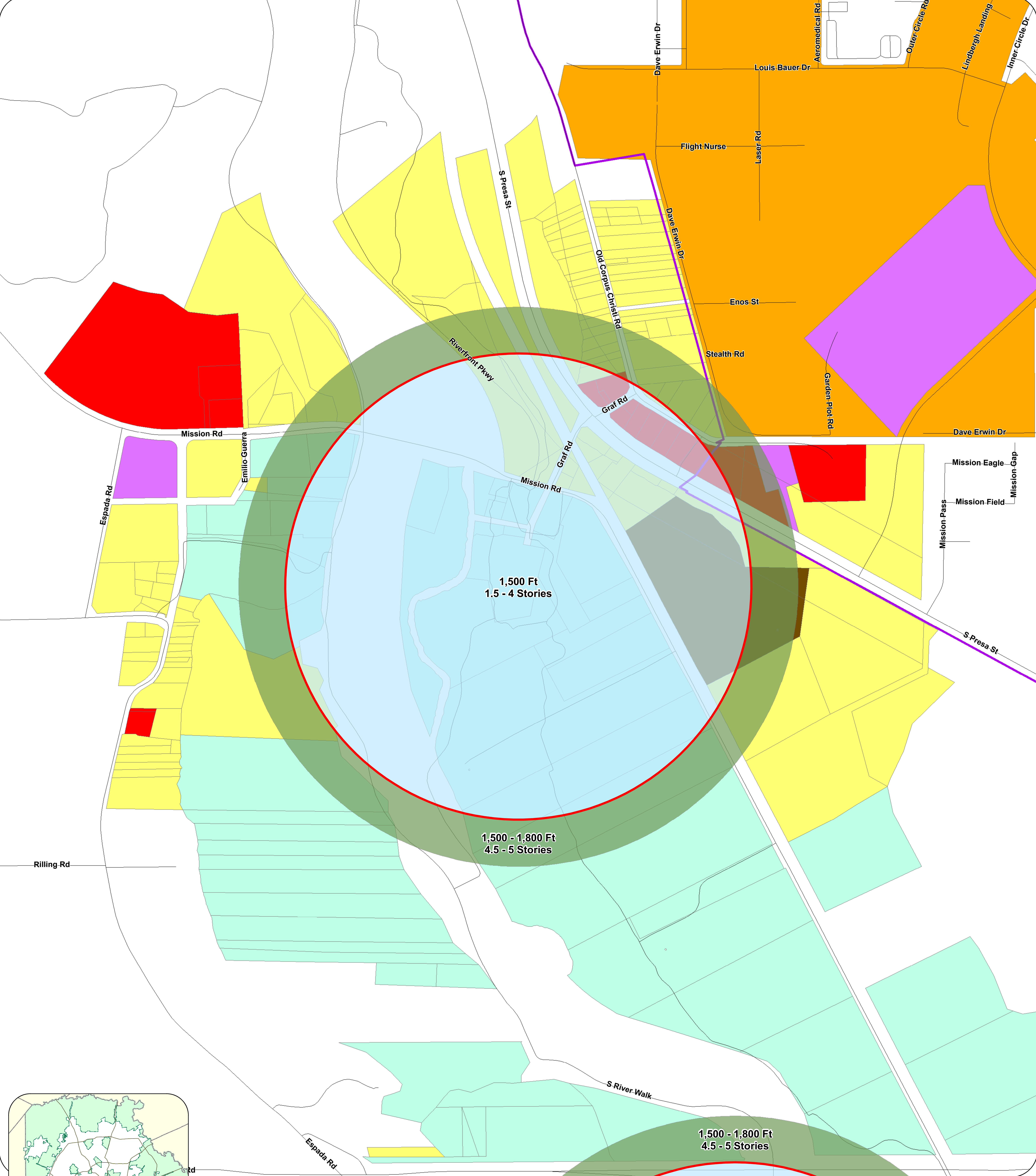
Date/Time Saved: 11/30/2022
PDF Filename: MPOD WH 2.pdf
Map Path: \\uscommonifscommon\\Misc29\\GIS\\P\\50\\plan_\\b\\Projects2022\\HistoricPreservation\\MPOD\\MPOD WH 2.mxd

City of San Antonio MPOD Proposed Buffer Expansion Mission San Jose

0 500
Feet

City of San Antonio
Information Technology Services Department
GIS Public Services Division

Riverview Towers
111 Soledad St, Suite 900
San Antonio, TX 78205



Zoning Description

Single-Family Residential	Farm and Ranch	Neighborhood Preservation	Exiting MPOD	Bexar County
Multi-Family Residential	Development Reserve	Office	World Heritage Buffer	Expressways
Commercial	Infill Development Zone	Mixed-Use Residential	City of San Antonio	Streets
Industrial	Manufactured Housing	Resource Protection		
	Neighborhood Commercial			

City of San Antonio
MPOD Proposed Buffer Expansion
Mission San Juan

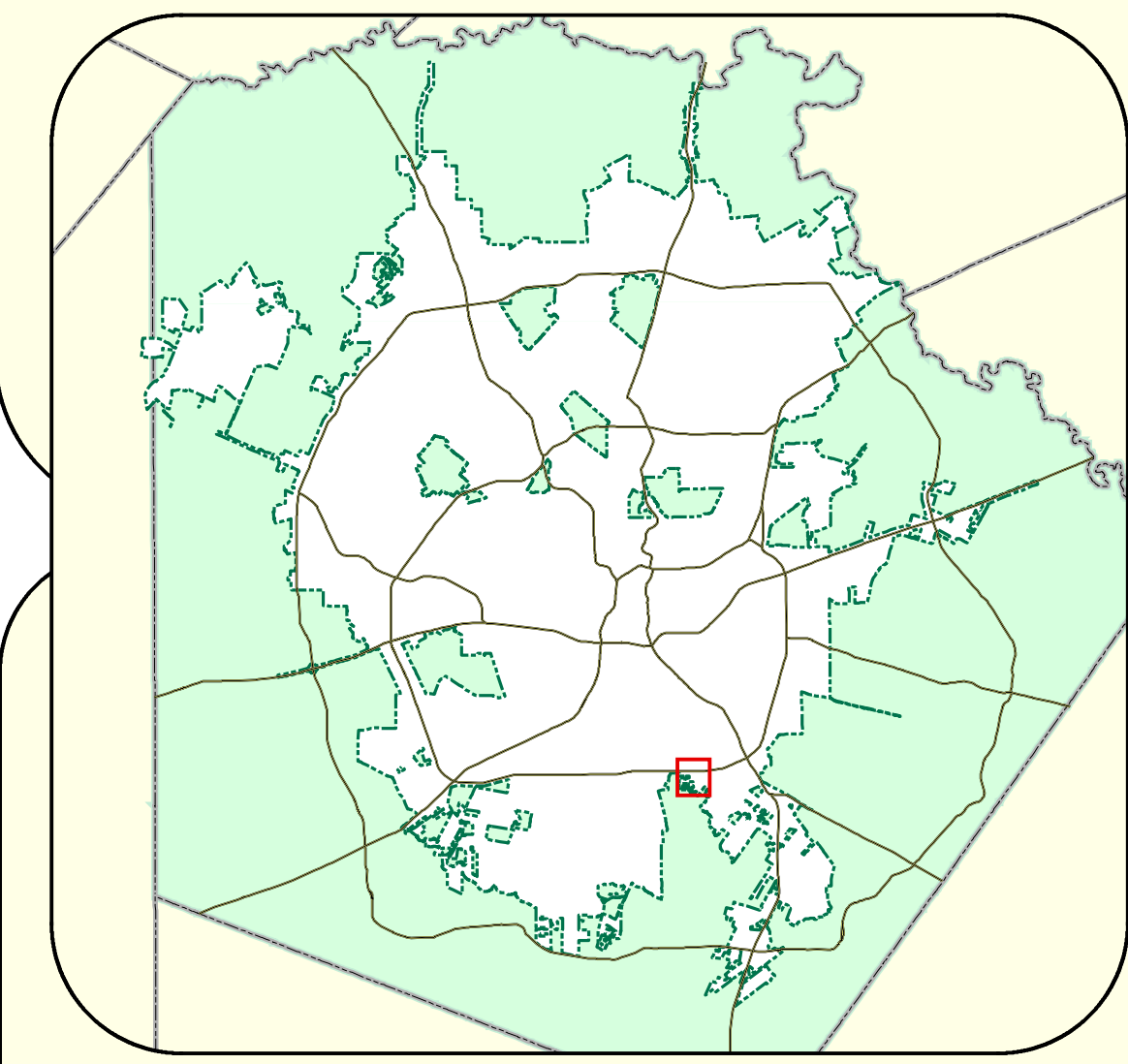
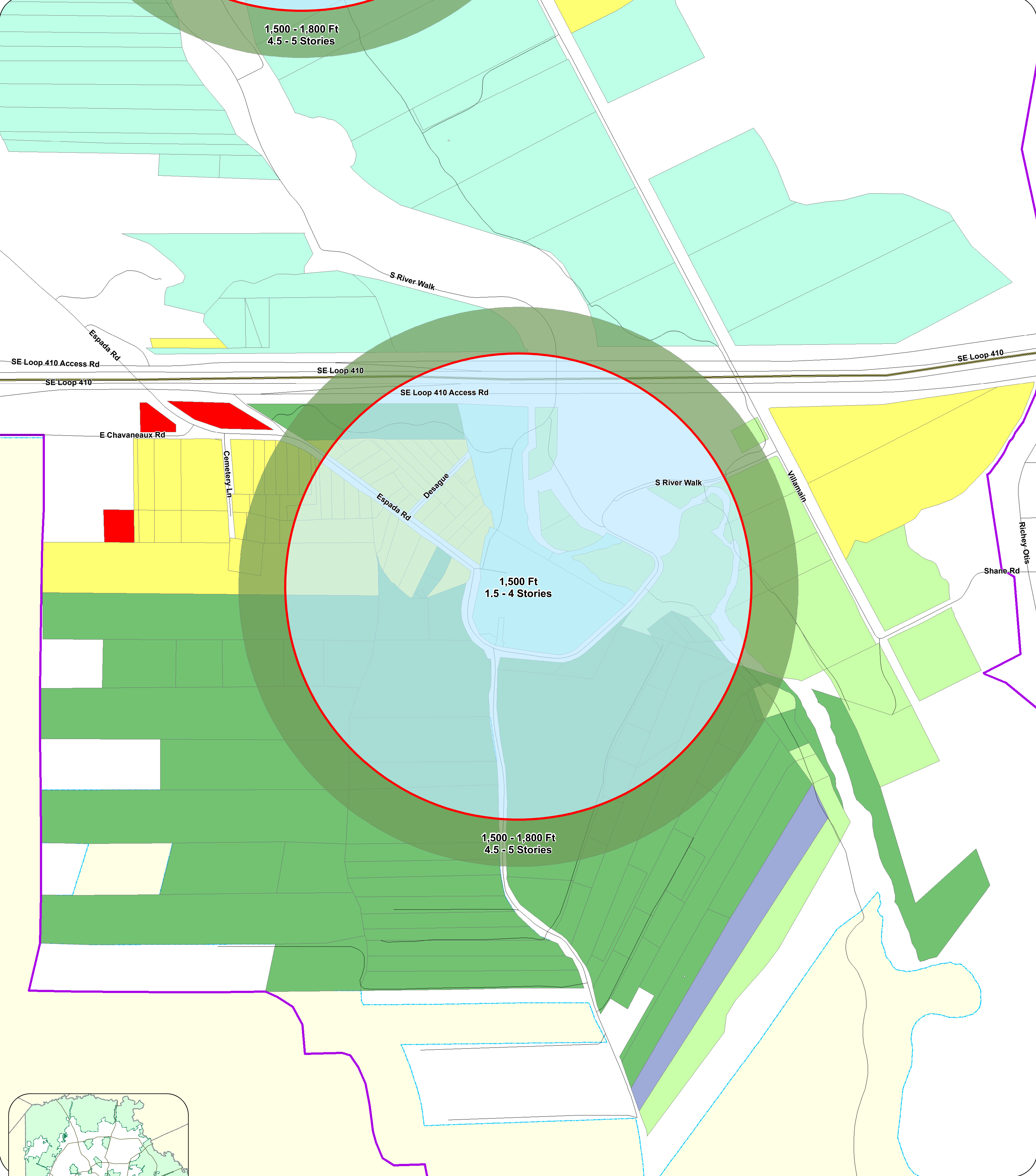
City of San Antonio
Information Technology Services Department
GIS Public Services Division
Riverview Towers
111 Soledad St, Suite 900
San Antonio, TX 78205

Data Source: City of San Antonio Enterprise GIS, Bexar Metro 911, Bexar Appraisal District

*This Geographic Information System Product, received from The City of San Antonio is provided "as is" without warranty of any kind, and the City of San Antonio expressly disclaims all express and implied warranties, including but not limited to the implied warranties of merchantability and fitness for a particular purpose. The City of San Antonio does not warrant, guarantee, or make any representations regarding the use, or the results of the use, of the information provided to you by the City of San Antonio in terms of correctness, accuracy, reliability, timeliness or otherwise. The entire risk as to the results and performance of any information obtained from the City of San Antonio is entirely assumed by the recipient.

Please contact the responsible City of San Antonio Department for specific determinations.

Date/Time Saved: 11/30/2022
PDF Filename: MPOD WH 3.pdf
Map Path: \\uscommon1\dfscommon\Misc29\GIS\Pin50\plan_1b\Projects2022\HistoricPreservation\MPOD\MPOD WH 3.mxd



Zoning Description

- Single-Family Residential
- Multi-Family Residential
- Commercial
- Industrial

- Farm and Ranch
- Development Reserve
- Infill Development Zone
- Manufactured Housing
- Neighborhood Commercial

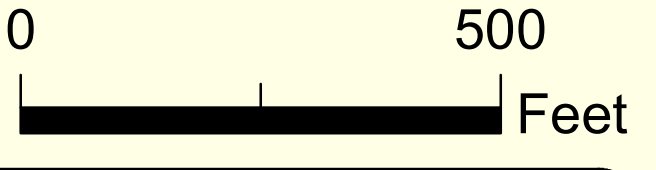
- Neighborhood Preservation
- Office
- Mixed-Use Residential
- Resource Protection

- Exiting MPOD
- World Heritage Buffer
- City of San Antonio

- Bexar County
- Expressways
- Streets

Data Source: City of San Antonio Enterprise GIS, Bexar Metro 911, Bexar Appraisal District
*This Geographic Information System Product, received from The City of San Antonio is provided "as is" without warranty of any kind, and the City of San Antonio expressly disclaims all express and implied warranties, including but not limited to the implied warranties of merchantability and fitness for a particular purpose. The City of San Antonio does not warrant, guarantee, or make any representations regarding the use, or the results of the use, of the information provided to you by the City of San Antonio in terms of correctness, accuracy, reliability, timeliness or otherwise. The entire risk as to the results and performance of any information obtained from the City of San Antonio is entirely assumed by the recipient.
Please contact the responsible City of San Antonio Department for specific determinations.

City of San Antonio MPOD Proposed Buffer Expansion Mission Espada



City of San Antonio
Information Technology Services Department
GIS Public Services Division
Riverview Towers
111 Soledad St., Suite 900
San Antonio, TX 78205