

BOA-23-10300034 Attachments



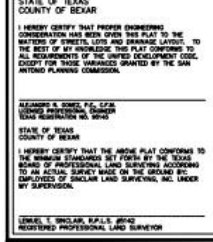
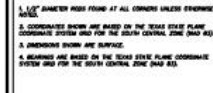
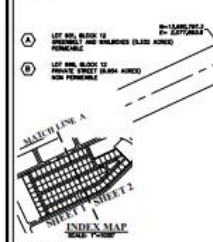
[illegible]

TABLE 1 Physical Characteristics of the 10 Most Commonly Used Fish Species									
CURVE	RADIUS	AREA	PERIMETER	LENGTH	CHORD	BEAM	DEPTH	WING	TAIL
C1	570.00	1943736	96.09	196.22	500.00	307.30	70	135.0	135.0
C2	15.00	90700.00	23.56	23.56	500.00	48.50	21.58	21.58	21.58
C3	15.00	90700.00	15.00	23.56	N0215.37L		21.58	21.58	21.58
C4	15.00	90700.00	23.56	23.56	N0504.74L		21.58	21.58	21.58
C5	15.00	90700.00	15.00	23.56	N0215.37L		21.58	21.58	21.58
C6	470.00	1943736	81.71	181.80	N0507.30E		161.0	161.0	161.0
C7	400.00	1943736	73.31	166.07	N0507.30E		143.8	143.8	143.8
C8	75.00	160164.34	631.42	208.80	N0428.29W		66.7	66.7	66.7
C9	125.00	310141.48	34.70	37.0	N0438.28W		147.8	147.8	147.8
C10	15.00	110292.33	23.71	30.21	N0719.50E		35.3	35.3	35.3
C11	15.00	110292.33	23.71	30.21	N0719.50W		35.3	35.3	35.3

CURVE TABLE				
CURVE	RADIUS	ANGLE	TANGENT LENGTH	CHORD
C12	25.00'	180°/00'00"	14.87'	09.93'
C13	15.00'	90°/00'00"	15.00'	23.56'
C14	15.00'	90°/00'00"	15.00'	23.56'
C15	15.00'	90°/00'00"	15.00'	23.56'
C16	15.00'	90°/00'00"	15.00'	23.56'
C17	15.00'	90°/00'00"	15.00'	23.56'
C18	15.00'	90°/00'00"	15.00'	23.56'
C19	15.00'	90°/00'00"	15.00'	23.56'
C20	15.00'	90°/00'00"	15.00'	23.56'
C21	15.00'	90°/00'00"	15.00'	23.56'
C22	15.00'	90°/00'00"	15.00'	23.56'
C23	15.00'	90°/00'00"	15.00'	23.56'
C24	15.00'	90°/00'00"	15.00'	23.56'

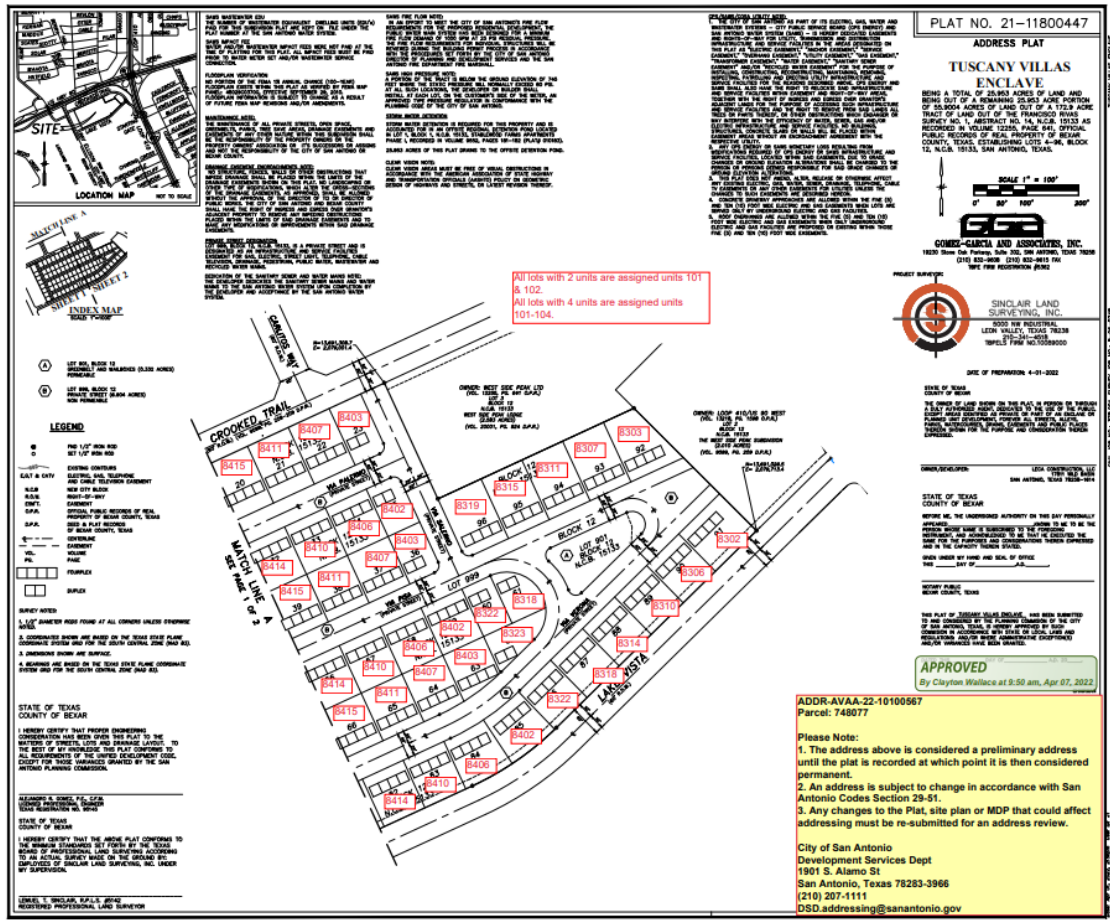
[illegible]

ADDR-AVAA-22-10100567
Parcel: 748077

Please Note:

1. The address above is considered a preliminary address until the plat is recorded at which point it is then considered permanent.
2. An address is subject to change in accordance with San Antonio Codes Section 29-51.
3. Any changes to the Plat, site plan or MDP that could affect addressing must be re-submitted for an address review.

City of San Antonio
Development Services Dept
1901 S. Alamo St
San Antonio, Texas 78283-3966
(210) 207-1111
DSD.addressing@sanantonio.gov



Subject Property





