

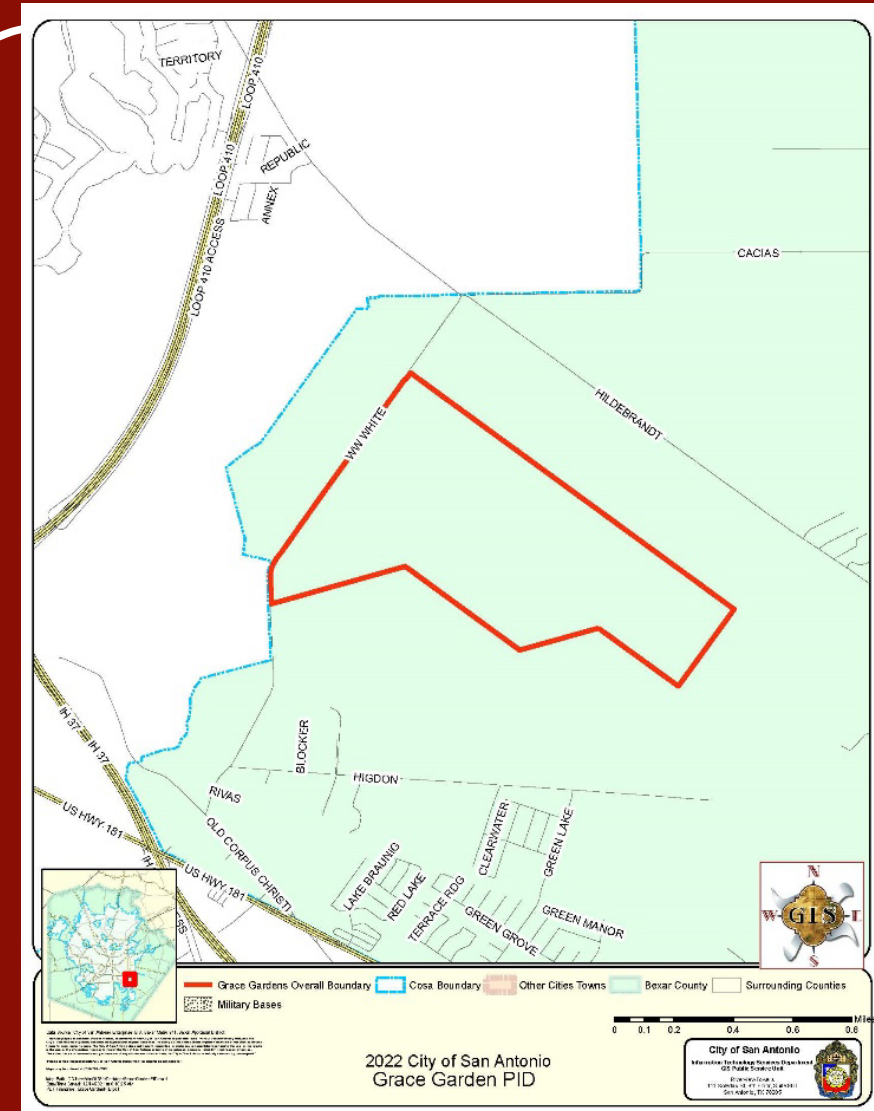
# **Grace Gardens and Sapphire Grove Public Improvement Districts (PID) Strategic Partnership Agreements (SPA) – Second Public Hearing and Consideration**

**City Council Public “A” Session  
Agenda Items No. 31 and 32**



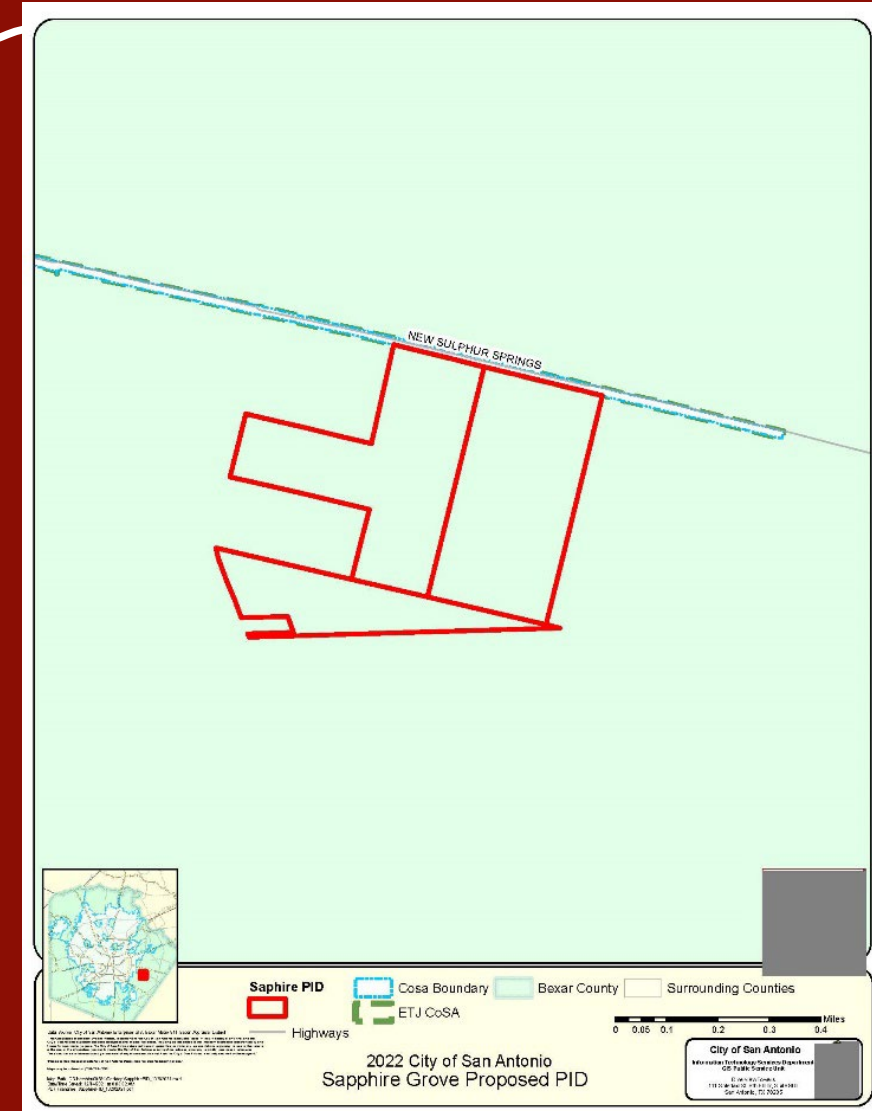
# Grace Gardens PID

- The PID consists of +/- 456.651 acres generally located southeast of the intersection of Hildebrandt Road and South WW White Road
- PID development consists of:
  - +/- 1,400 single-family residential units
  - +/- 8.2 acres of commercial land



# Sapphire Grove PID

- The PID consists of +/-173.27 acres generally located south of New Sulphur Springs Road and east of Gardner Road
- PID development consists of:
  - +/- 950 single-family residential units



# SPA Terms



- SPA is between the City and the PID
- Purpose of limited purpose annexation is to collect sales taxes by City
- Revenue-sharing between the City (75%) and PID (25%)
- No City services are provided
- No property taxes are collected

# Proposed Timeline



**April 14, 2022**

City Council  
consented to PID  
creation and  
approved the  
Development  
Agreements

**April 19, 2022**

Bexar County established  
the PIDs

**March 20, 2024**

City Council  
Public Hearings

**March 21, 2024**

**2<sup>nd</sup> Public Hearings  
and City Council  
approval of SPAs**

# Recommendation



Staff recommends approval of two Ordinances authorizing the execution of Strategic Partnership Agreements with the Grace Gardens and Sapphire Grove Public Improvement Districts.