

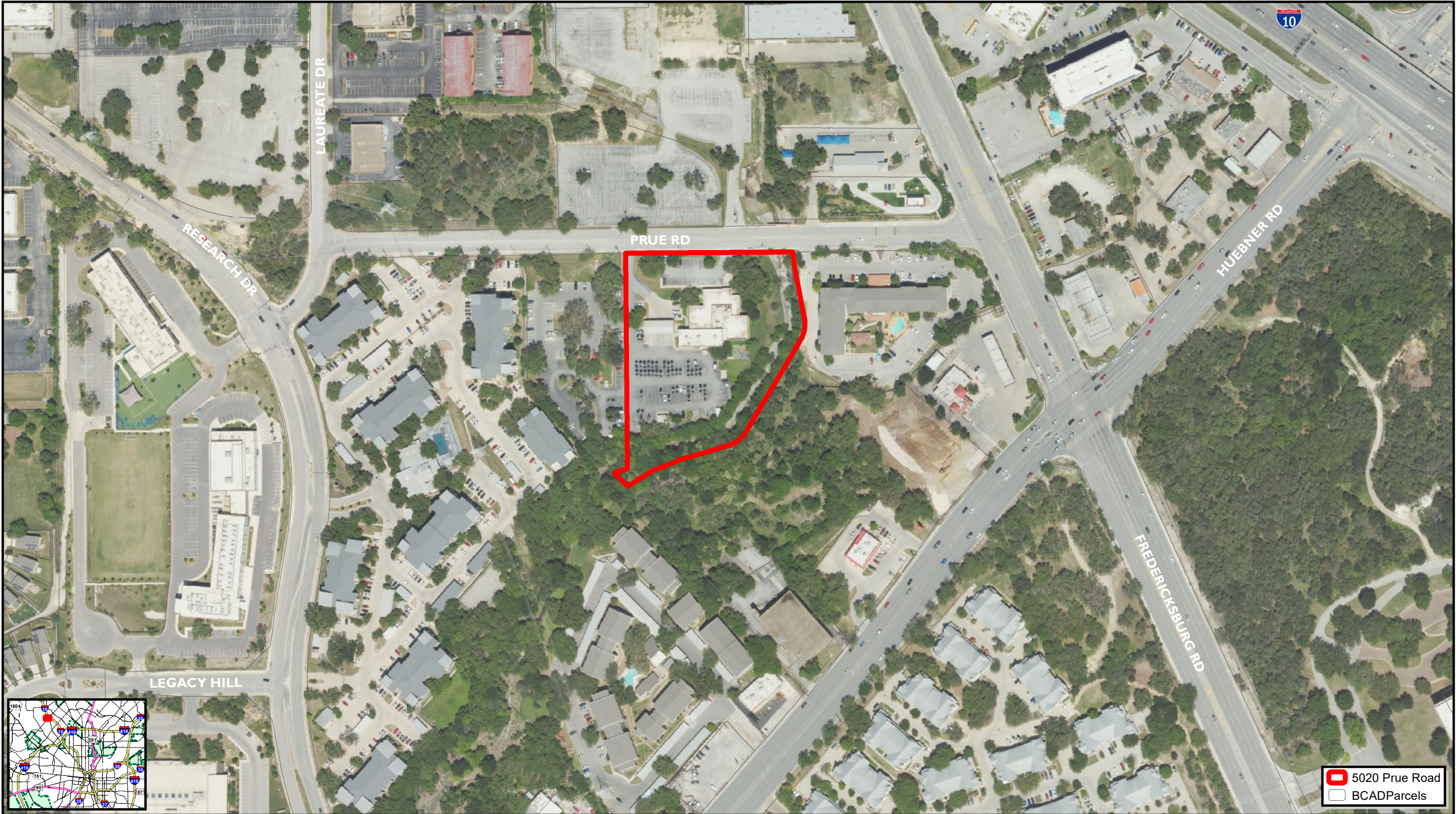




This Geographic Information System Product, received from The City of San Antonio is provided "as is" without warranty of any kind, and the City of San Antonio expressly disclaims all express and implied warranties, including but not limited to the implied warranties of merchantability and fitness for a particular purpose. The City of San Antonio does not warrant, guarantee, or make any representations regarding the use, or the results of the use, of the information provided to you by the City of San Antonio in terms of correctness, accuracy, reliability, timeliness or otherwise. The entire risk as to the results and performance of any information obtained from the City of San Antonio is entirely assumed by the recipient. *Please contact the responsible City of San Antonio Department for specific determinations.*
Data Source: City of San Antonio Enterprise GIS, Bexar Metro 911, Bexar Appraisal District

Map Last Edited: Wednesday, February 14, 2024
PDF Filename: \\Cosa\23\GIS\GIS\PDFs_JPEGs(CurrentExhibits\FY2024\2402ag05753_05.pdf

City of San Antonio
Police Substation
711 W Mayfield Blvd
San Antonio, Tx 78211



This Geographic Information System Product, received from The City of San Antonio is provided "as is" without warranty of any kind, and the City of San Antonio expressly disclaims all express and implied warranties, including but not limited to the implied warranties of merchantability and fitness for a particular purpose. The City of San Antonio does not warrant, guarantee, or make any representations regarding the use, or the results of the use, of the information provided to you by the City of San Antonio in terms of correctness, accuracy, reliability, timeliness or otherwise. The entire risk as to the results and performance of any information obtained from the City of San Antonio is entirely assumed by the recipient.
*Please contact the responsible City of San Antonio Department for specific determinations.
Data Source: City of San Antonio Enterprise GIS, Bexar Metro 911, Bexar Appraisal District

Map Last Edited: Wednesday, February 14, 2024
PDF Filename: \\Cosa\23\GIS\GISPDFs_JPEGs(CurrentExhibits\FY2024\2402ag05753_03.pdf

City of San Antonio
Police Substation
5020 Prue Road
San Antonio, Tx 78240





This Geographic Information System Product, received from The City of San Antonio is provided "as is" without warranty of any kind, and the City of San Antonio expressly disclaims all express and implied warranties, including but not limited to the implied warranties of merchantability and fitness for a particular purpose. The City of San Antonio does not warrant, guarantee, or make any representations regarding the use, or the results of the use, of the information provided to you by the City of San Antonio in terms of correctness, accuracy, reliability, timeliness or otherwise. The entire risk as to the results and performance of any information obtained from the City of San Antonio is entirely assumed by the recipient. *Please contact the responsible City of San Antonio Department for specific determinations.*
Data Source: City of San Antonio Enterprise GIS, Bexar Metro 911, Bexar Appraisal District

City of San Antonio
Police Substation
3635 E Houston Street
San Antonio, Tx 78219



This Geographic Information System Product, received from The City of San Antonio is provided "as is" without warranty of any kind, and the City of San Antonio expressly disclaims all express and implied warranties, including but not limited to the implied warranties of merchantability and fitness for a particular purpose. The City of San Antonio does not warrant, guarantee, or make any representations regarding the use, or the results of the use, of the information provided to you by the City of San Antonio in terms of correctness, accuracy, reliability, timeliness or otherwise. The entire risk as to the results and performance of any information obtained from the City of San Antonio is entirely assumed by the recipient.
Please contact the responsible City of San Antonio Department for specific determinations.
Data Source: City of San Antonio Enterprise GIS, Bexar Metro 911, Bexar Appraisal District

City of San Antonio
Police Substation
7000 Culebra Road
San Antonio, Tx 78238