



GREEN
SPACES
ALLIANCE
OF SOUTH TEXAS

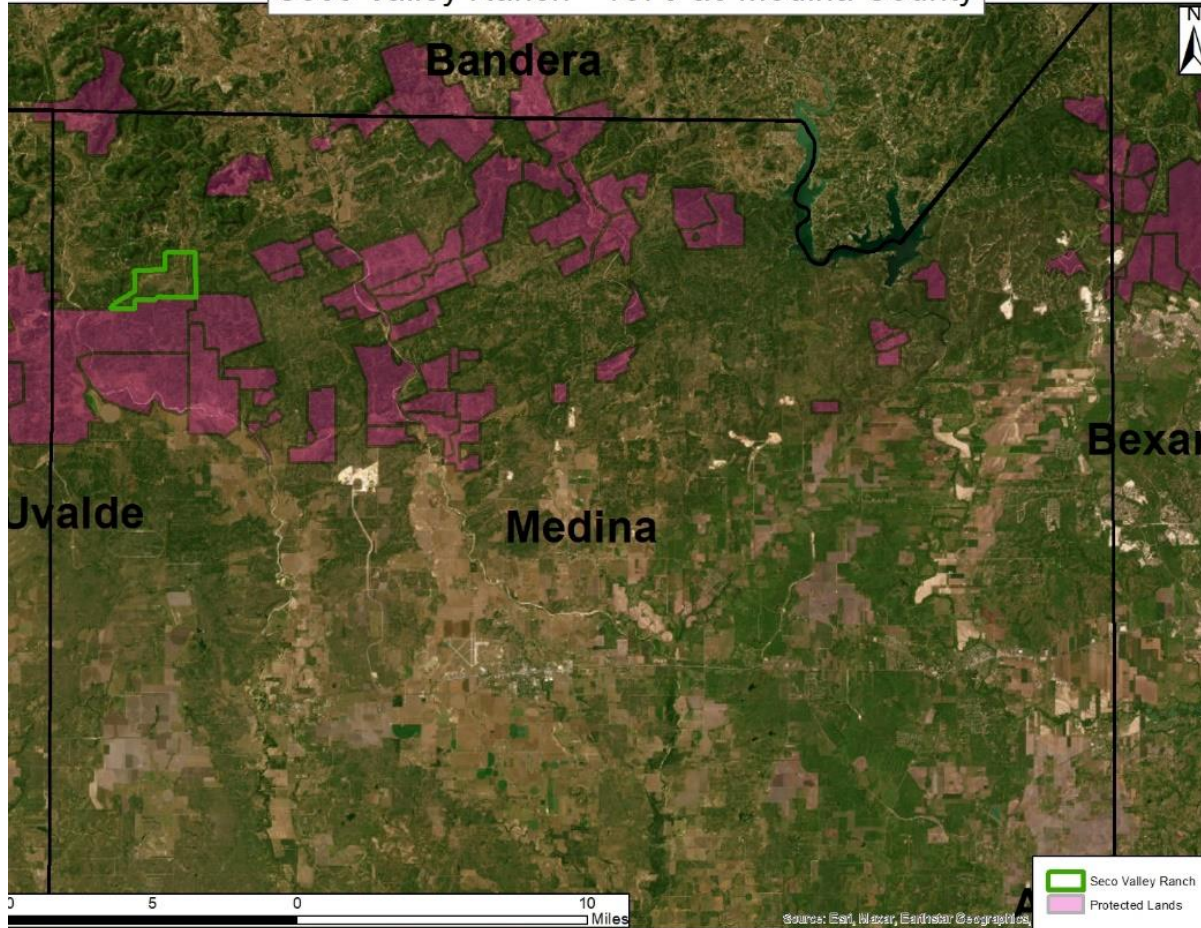
Seco Valley Ranch
Cherry Springs Ranch



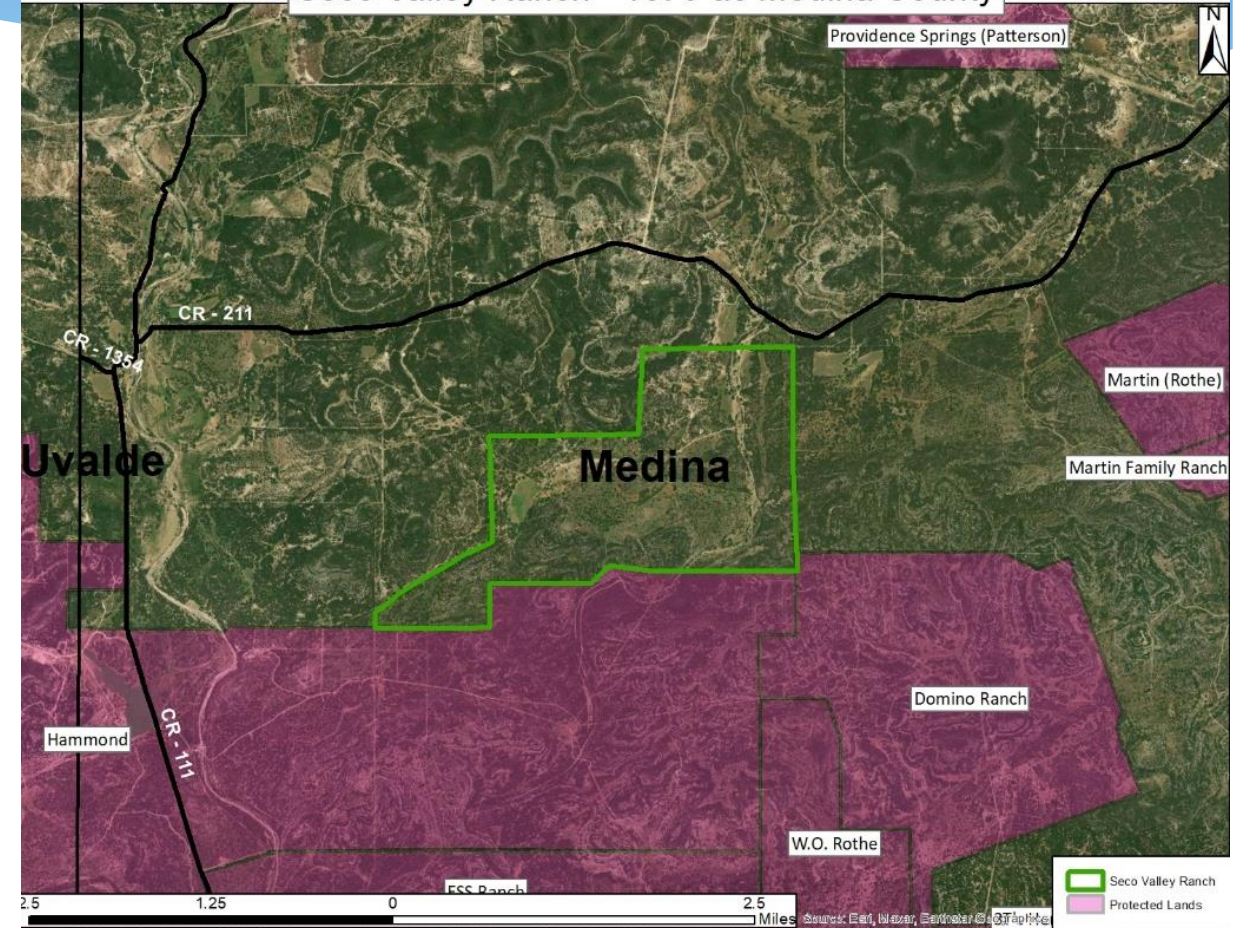
GREEN
SPACES
ALLIANCE
OF SOUTH TEXAS

Seco Valley Ranch (~1,870 acres) Medina County

Seco Valley Ranch - 1870 ac Medina County



Seco Valley Ranch - 1870 ac Medina County





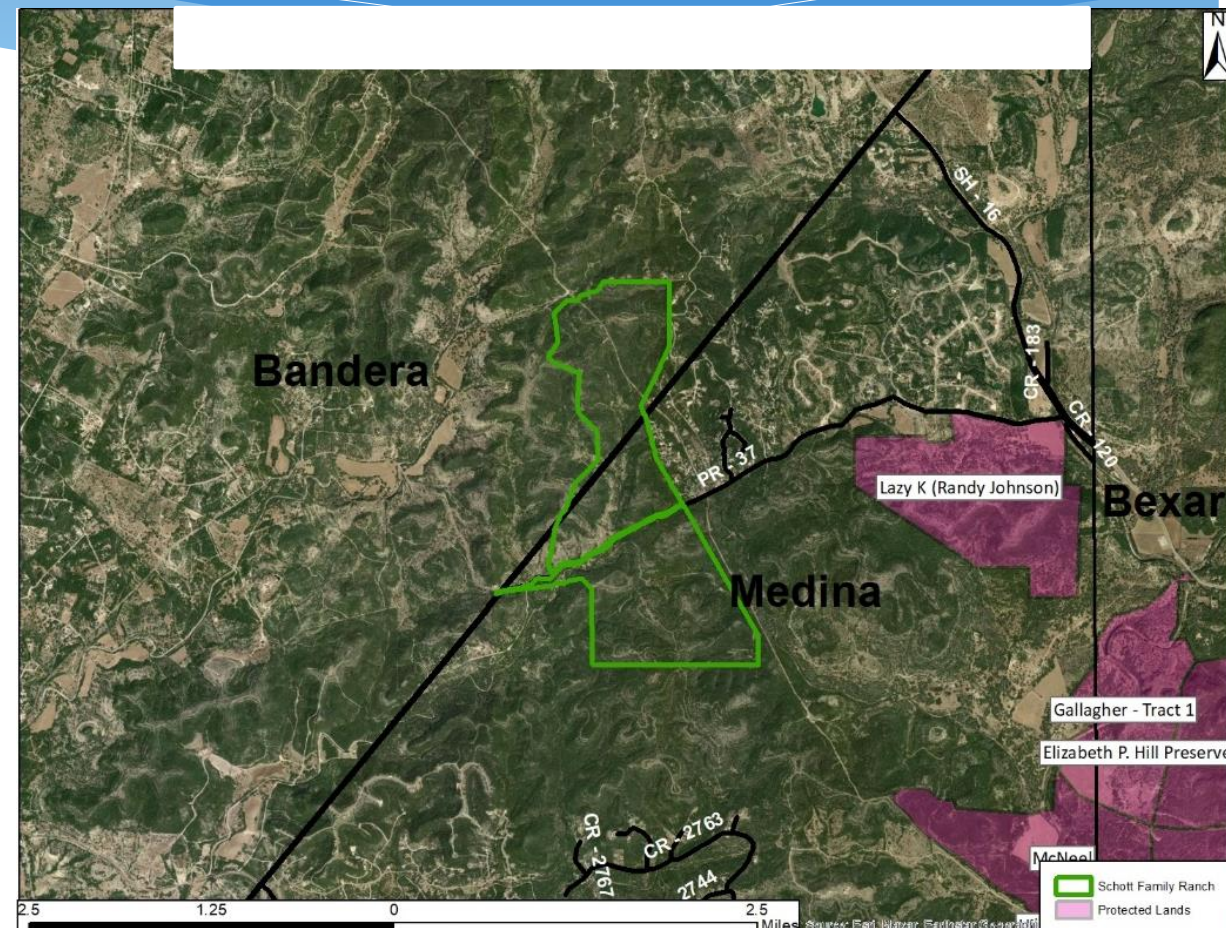
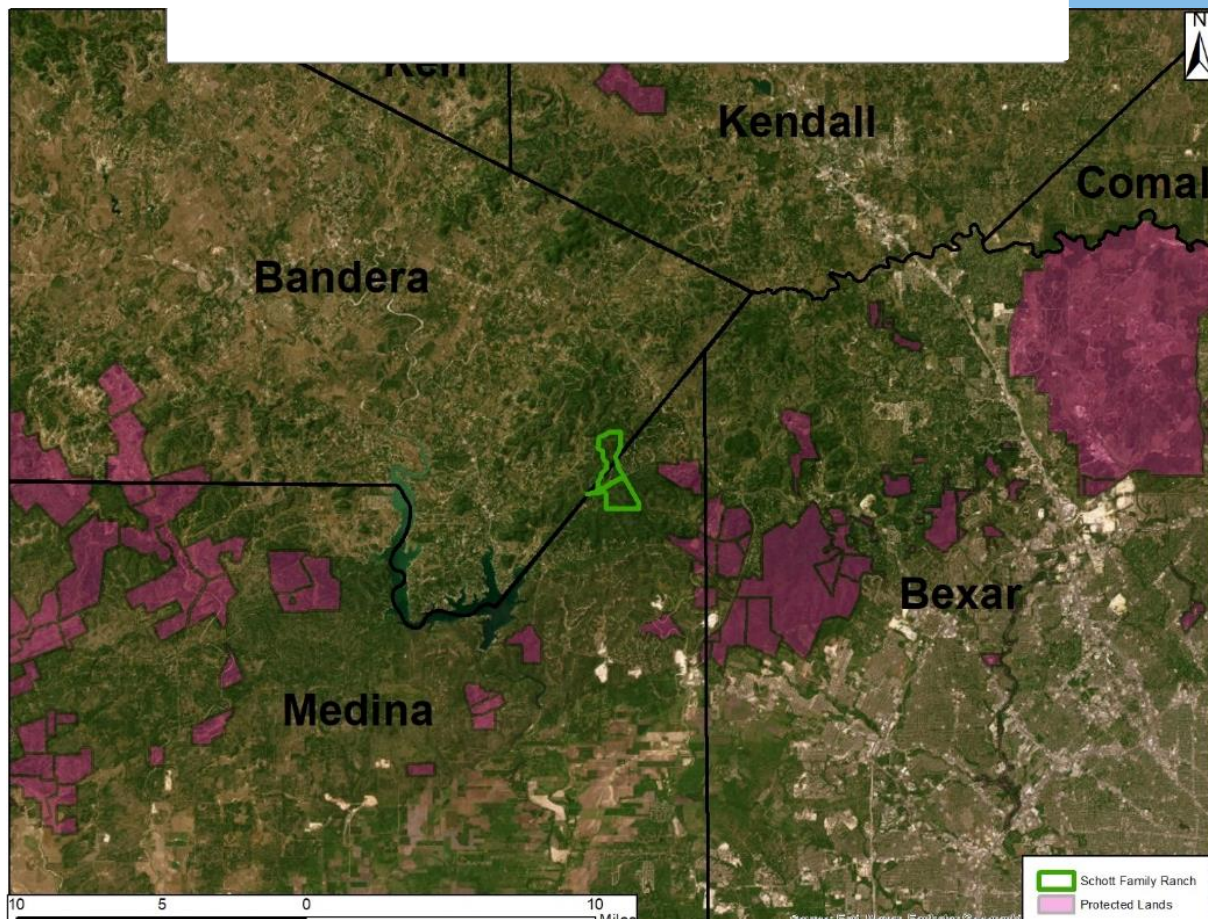
Seco Valley Ranch (~1,870 acres) Medina County

- ~1,870 acres
- ~53% EARZ; ~47% EACZ
- Top 20% SET
- Located North of the Domino Ranch and Hammond Ranches
- Very high water quantity
- Very high water quality



- **Updating Appraisal – No action required**

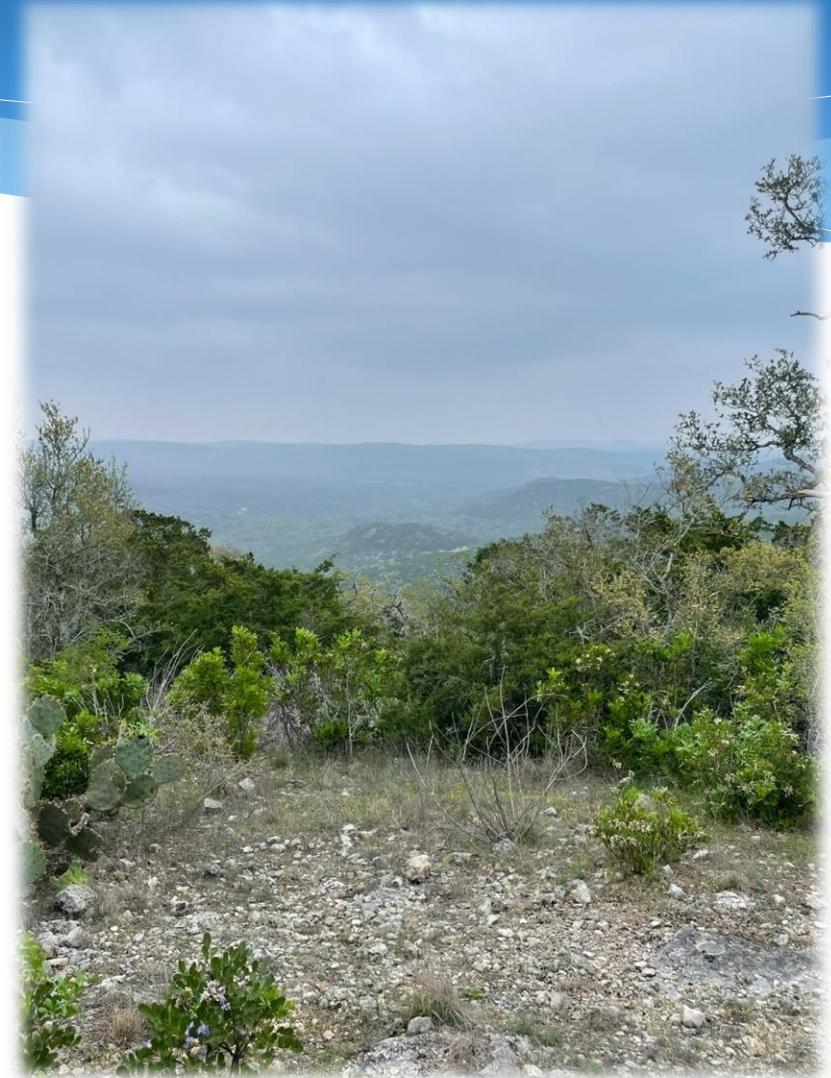
Cherry Springs Ranch (~2,024 acres) Bandera/Medina County





Cherry Springs Ranch (~2,024 acres) Bandera/Medina County

- 100% EACZ
- Top 20% SET Model
- Located on Park Road 37 west of Government Canyon SNA and east of Medina Lake in the rapidly developing City of San Antonio ETJ
- **Requesting Stage 1 Approval**





GREEN
SPACES
ALLIANCE
OF SOUTH TEXAS

Cherry Springs Ranch (~2,024 acres) Bandera/Medina County

