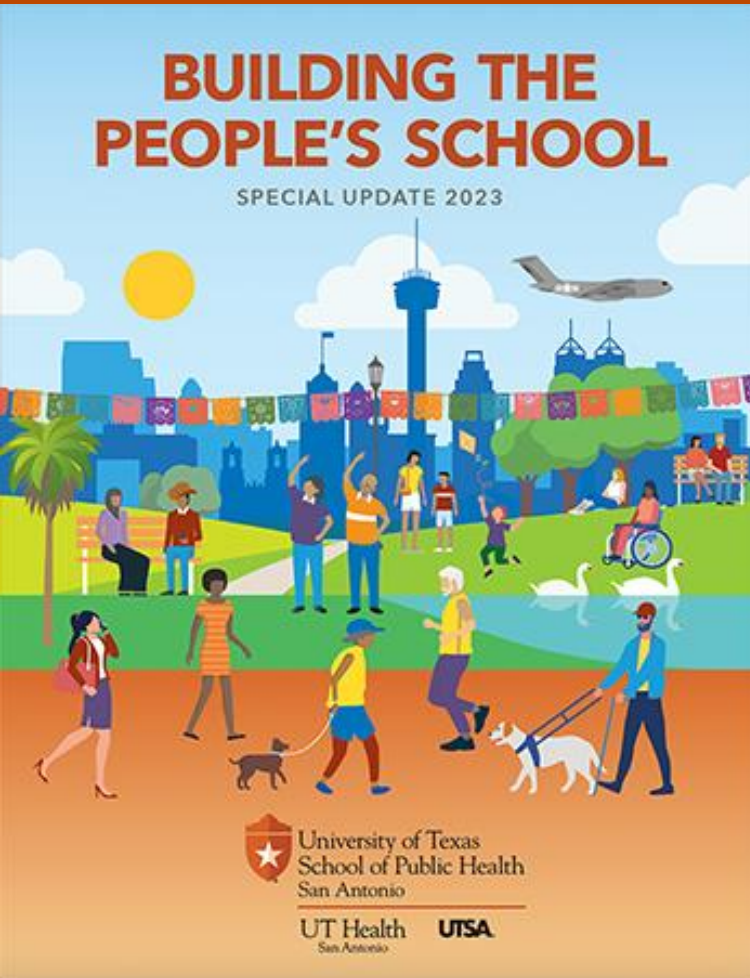


SPH at 1.5 Year: An Overview



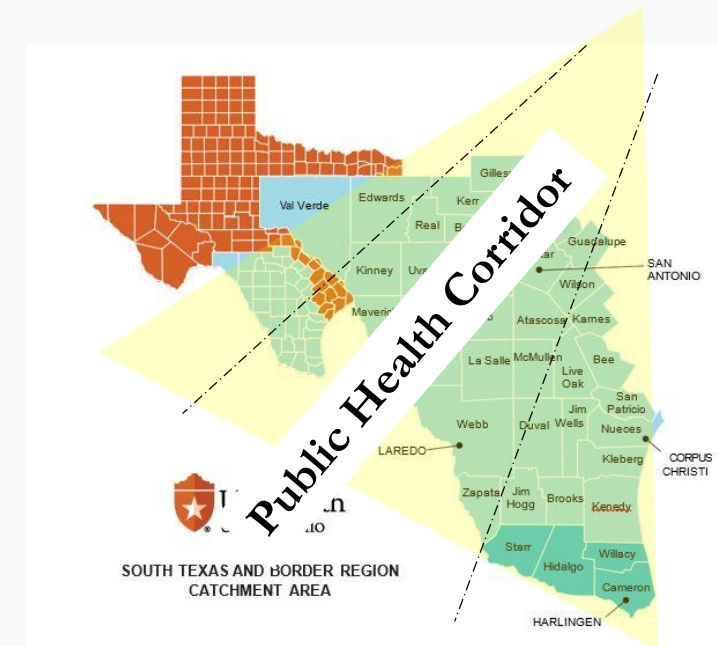
**UT SCHOOL OF
PUBLIC HEALTH
SAN ANTONIO**



Vision



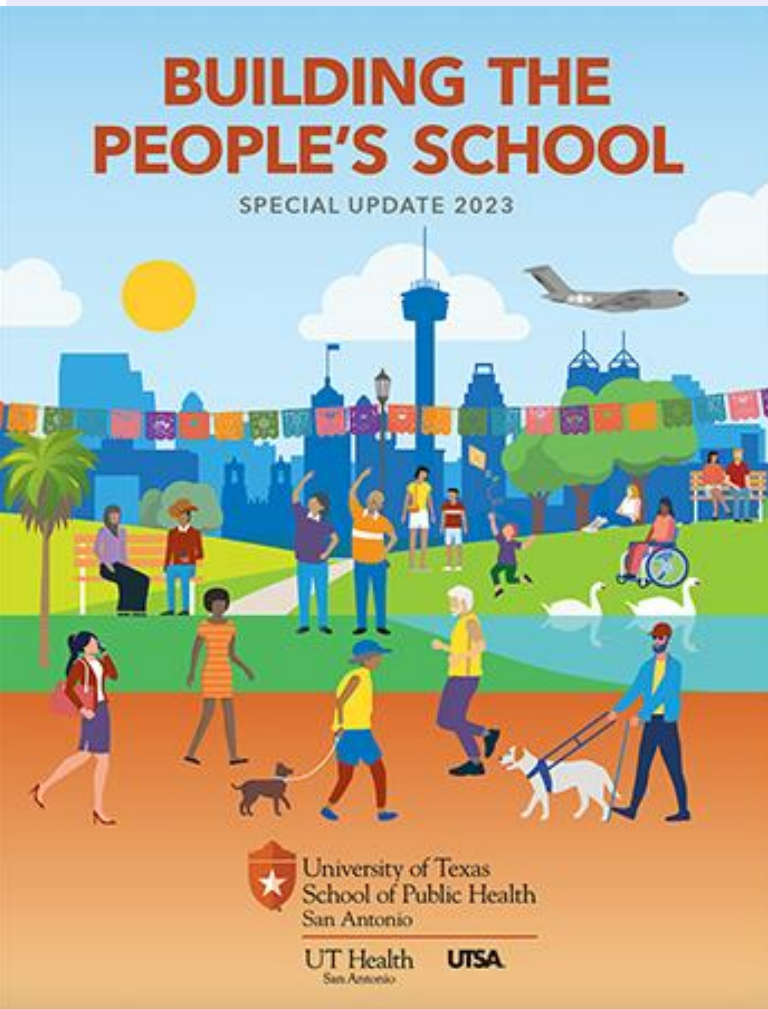
South Texas is in a dynamic condition of health and well-being with the SPH as its regional steward



UT SCHOOL OF
PUBLIC HEALTH
SAN ANTONIO

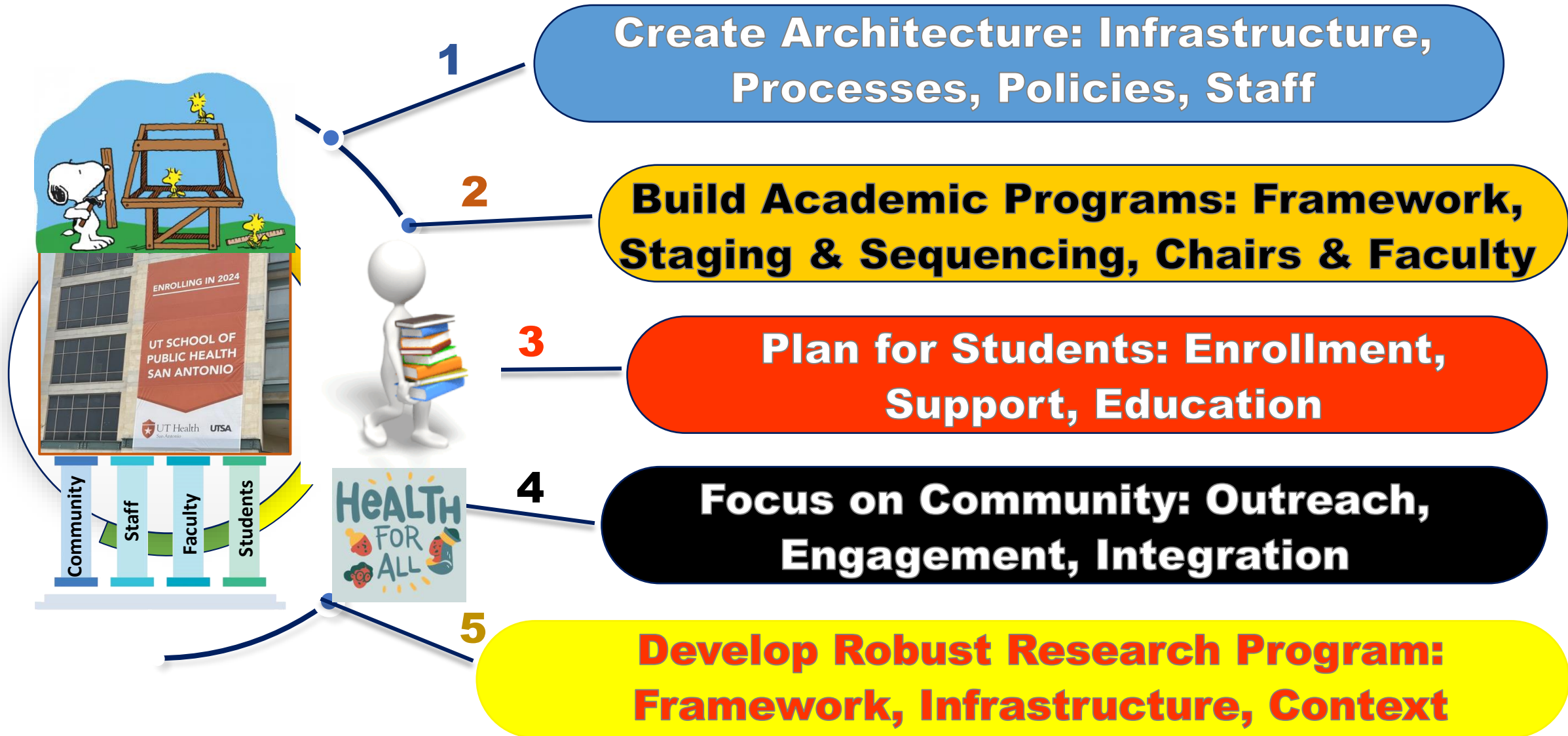
THE PEOPLE'S SCHOOL

Sirviendo con conocimiento, trabajando para la comunidad



“Serving with knowledge, working for the community”

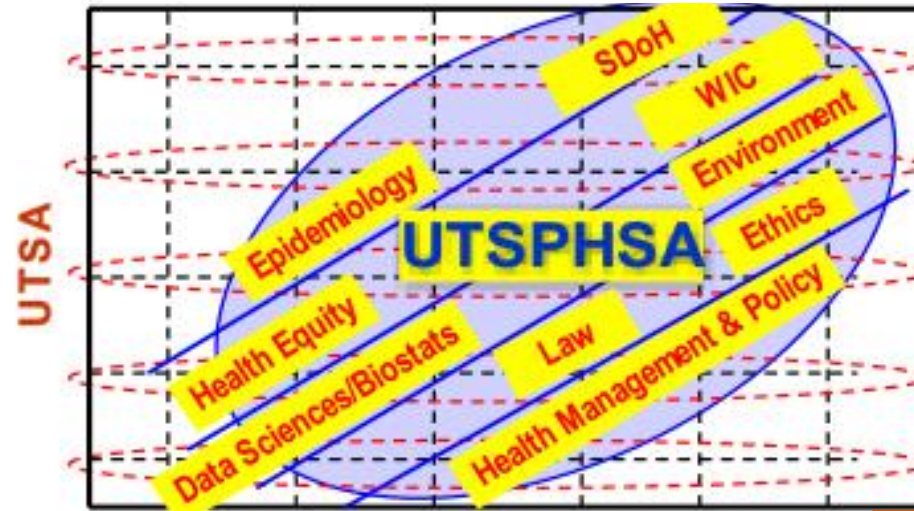
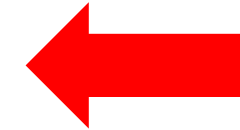
Executive Summary



Consolidate Key Partnerships



A TRANS-UT-CITY-COUNTY COLLABORATION
UTHSCSA



Metro Health/ Co SA

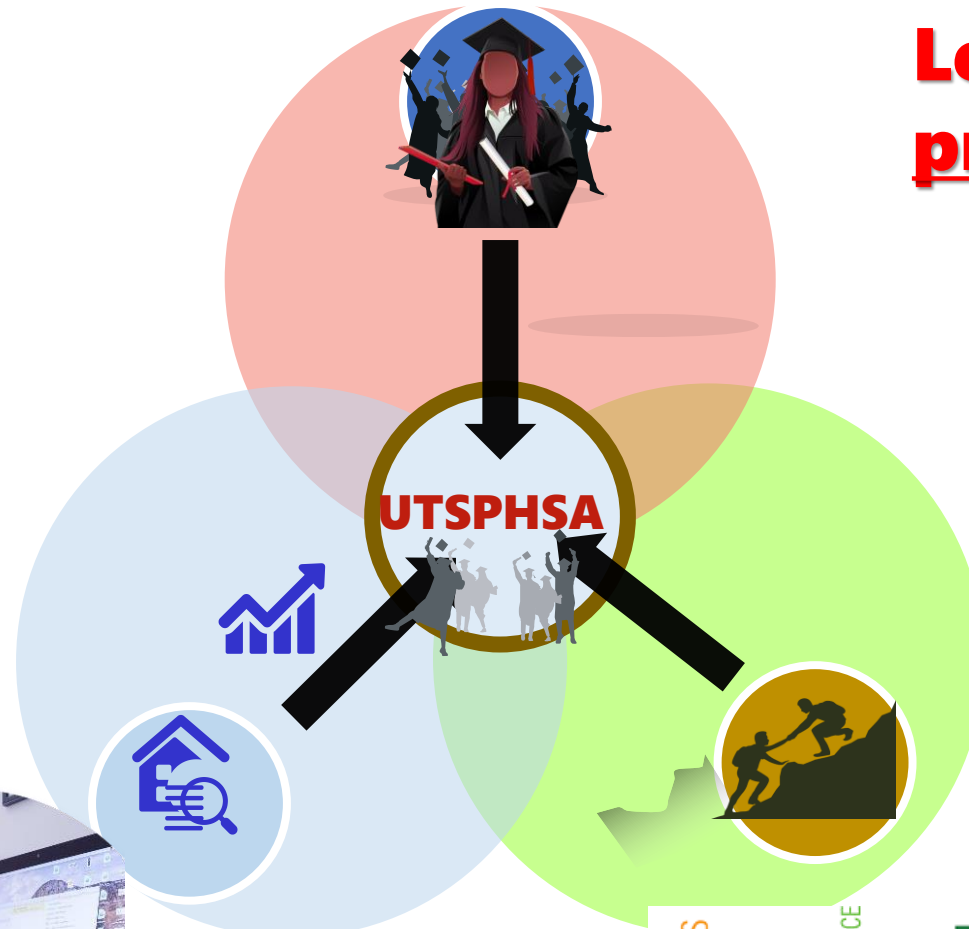


Tripartite Mission of UTSPHSA

01 Education
Learning that is practical



02 Research
Research that matters



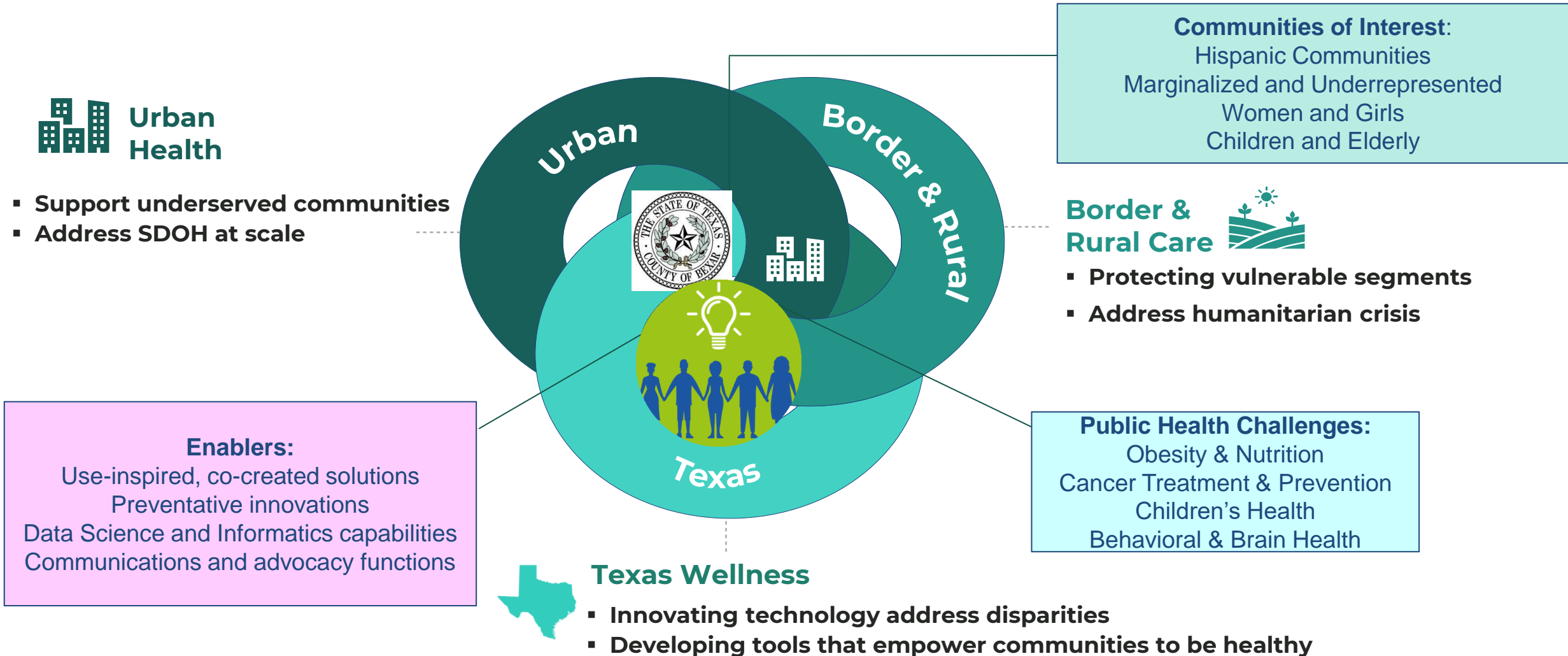
03 Service
Service that counts

GENEROUS
GIVING
AWARENESS
SERVICES
HELPING
CHARITY
ALTRUISTIC
LIFE
COMMUNITY
CONTRIBUTION
ADULT
RESCUE
ASSISTED
SUPPORT
HOPE
PERSON
ASSISTANCE
MORAL
CARE
RESPECT
TOGETHERNESS
VOLUNTEER
DONATIONS
TEAMWORK
MISSION
TIME
AID

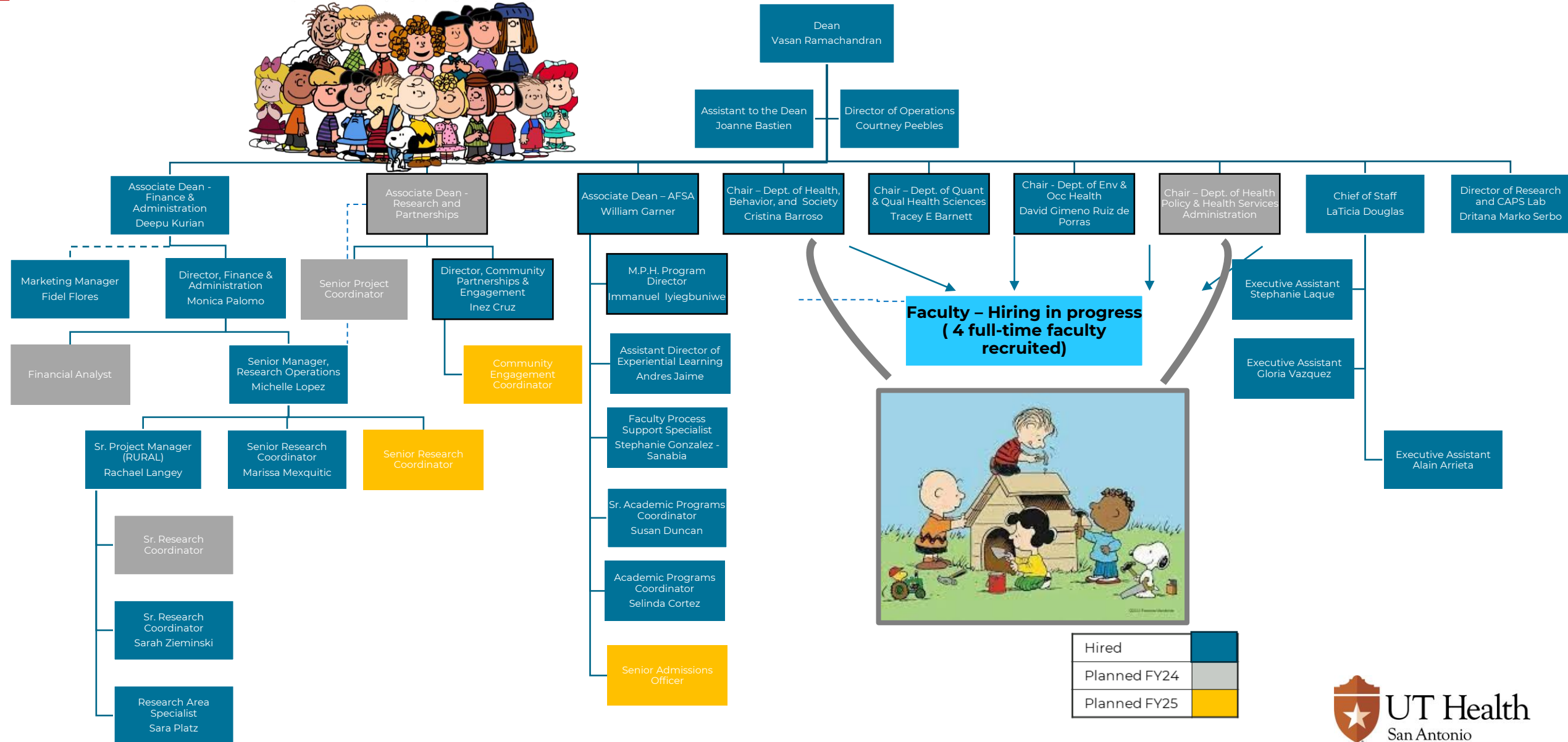
Academic priorities target public health needs

Academic Priorities reflect prevalent Public Health Challenges

Specific focus on SOCIAL IMPACT



Current State Organizational Structure

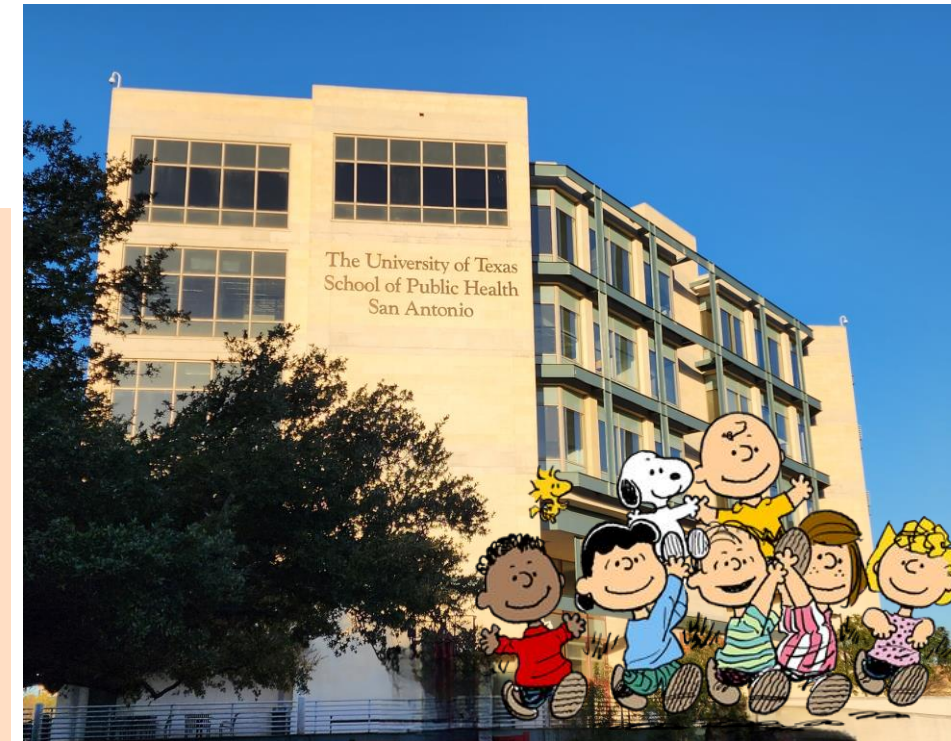


SPH Building Renovations

Renovation space	Square Footage
Café	1321
Classroom	18689
Student Lounge	2833
Multi-purpose/Flex Study room	8205
Office/Faculty lounge	17724
Conference	1062

RAB to SPH – On track for completion by August 2024

- First Floor 90% complete– Classroom, Student lounge, Café, IT Office complete. Common area flooring to be complete by March 24.
- Second Floor: Anticipated completion July 24, minimal renovations.
- Third Floor: 75% complete – Classroom, office spaces, student lounge complete. Painting ongoing, common area flooring pending
- Fourth Floor: 90% complete - Classroom, office spaces, study rooms, breakrooms complete . Common area flooring pending
- Fifth Floor: Faculty/Staff Lounge Complete. Dean's Suite commence on May 24.
- UT STARS Lab: 99% Complete – Final Clean up



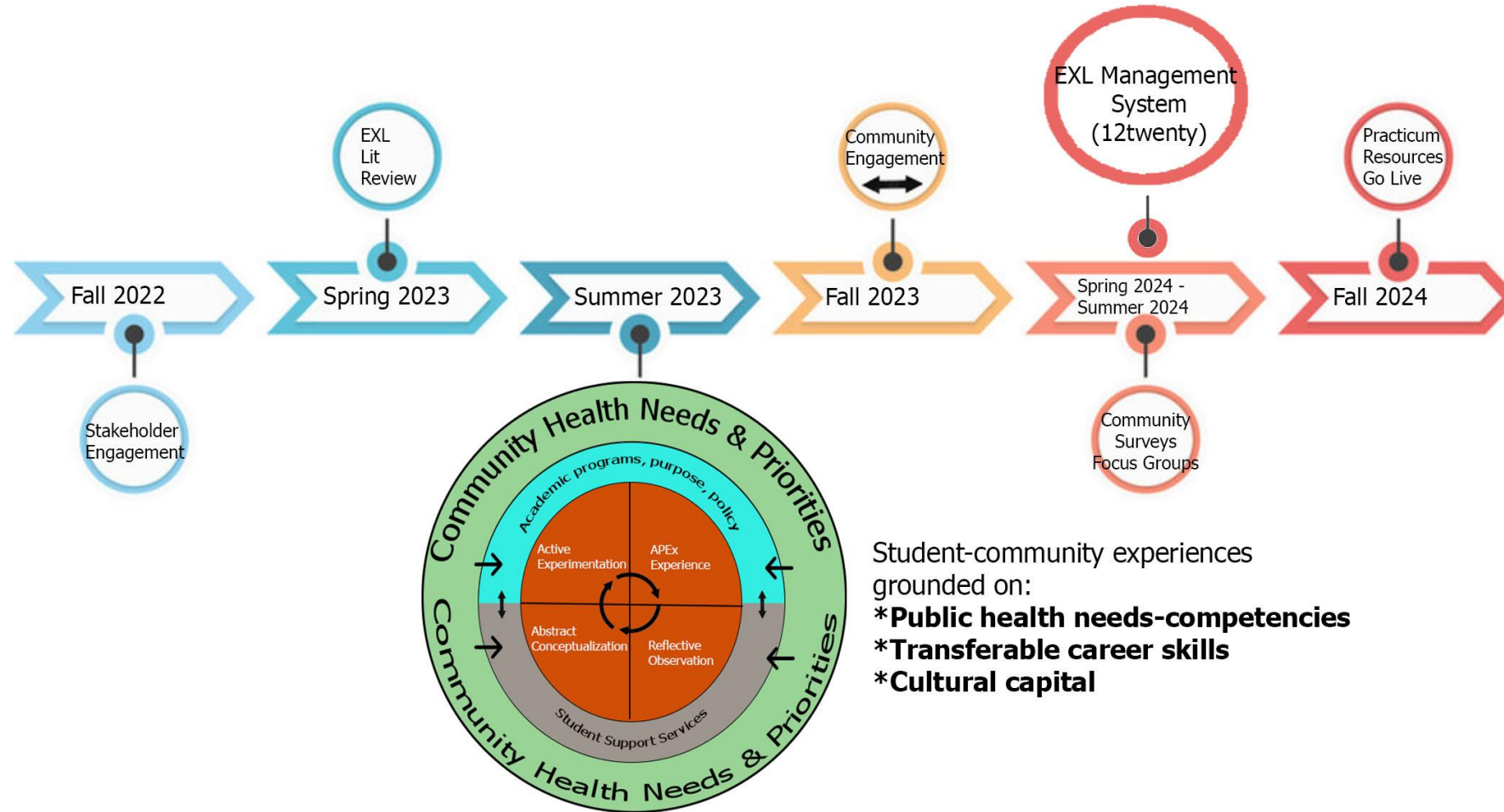
MPH in Public Health Practice & Administration (PHPA)

MPH in PHPA Curriculum: Course Plan		Credit Hours
1	PHEA 6001. Concepts in Public Health – From Person to Population	3
2	PHEA 6002. Perspectives and Decisions Through Public Health Data	3
3	PHEA 6003. Designing Public Health Inquiry: Quant. & Qual. Research Methods	3
4	PHEA 6004. Health Promotion and Health Behaviors	3
5	PHEA 6005. Health Policy and Public Health Advocacy	3
6	PHEA 6006. Introduction to Occupational and Environmental Health	3
7	PHEA 6007. Leadership in Public Health	3
8	PHEA 6009. Public Health Systems Administration	3
9	PHEA 6011. Continuous Quality Improvement in Public Health	3
10	PHEA 6097. Applied Practice Experience (APE): Practicum	3
11	PHEA 6099. Capstone Experience (Integrative Learning Experience – ILE)	3
12	PHEA 6008. Creating Mechanisms for Prevention & Intervention in Public Health	3
13	PHEA 6010. Structural and Social Determinants of Health	3
14	PHEA 6013. Community Engagement and Health Communications	3
15	PHEA 6015. Program Management, Assessment, and Evaluation	3
Total		45



KEY: *Required Core Course (Foundational Knowledge)* *Required Core Course (Foundational Competency)* *Required PHPA Concentration* *Required Core Course (APE & ILE)* *Elective Offerings (varies)*

Experiential Learning (EXL) Framework & Timeline



SPH Community-Driven EXL Framework

UT SCHOOL OF
PUBLIC HEALTH
SAN ANTONIO

Student Enrollment Timeline

OCT

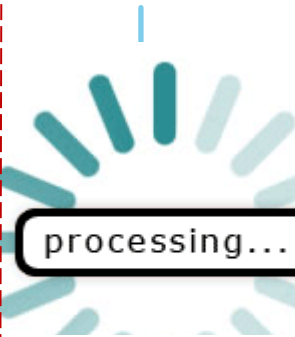
Admissions
Committee
Formed

ADMISSION
OPEN



DEC

Accepting
Applications



FEB

Acceptance
Decisions Start/
Metro Health
Virtual
Presentations



APR

Prepare for
onboarding



JUN

Student
Support
Services



AUG

Welcome
Students &
Orientation



SEP

Apply
Online 



NOV

Virtual
Outreach &
Recruitment
Starts



JAN

Admissions
Committee
Approved Rubrics/
Priority Deadline
(Jan. 15)

MAR

Acceptance
Decisions
Continued

MAY

Prepare for
Welcome
Packet/
Orientation

JUL

Student
Support
Services



ACCEPTED!

Community Integration at UT School of Public Health

Builds long-term relationships

Establishes TRUST

Emphasizes Fairness & Justice

Supports Empowerment & Self-Determination

Focuses on commitment to serve community



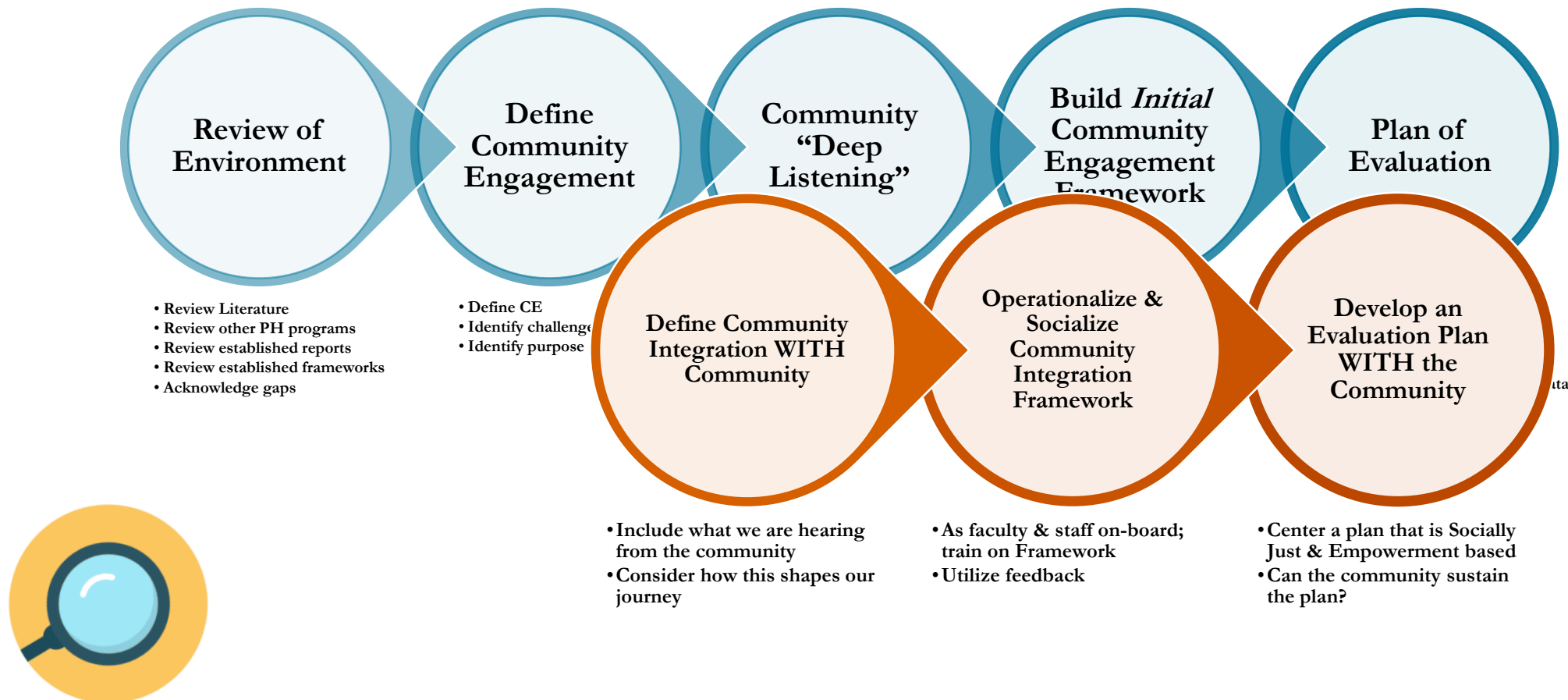
University of Texas
School of Public Health
San Antonio

UT Health
San Antonio

UTSA

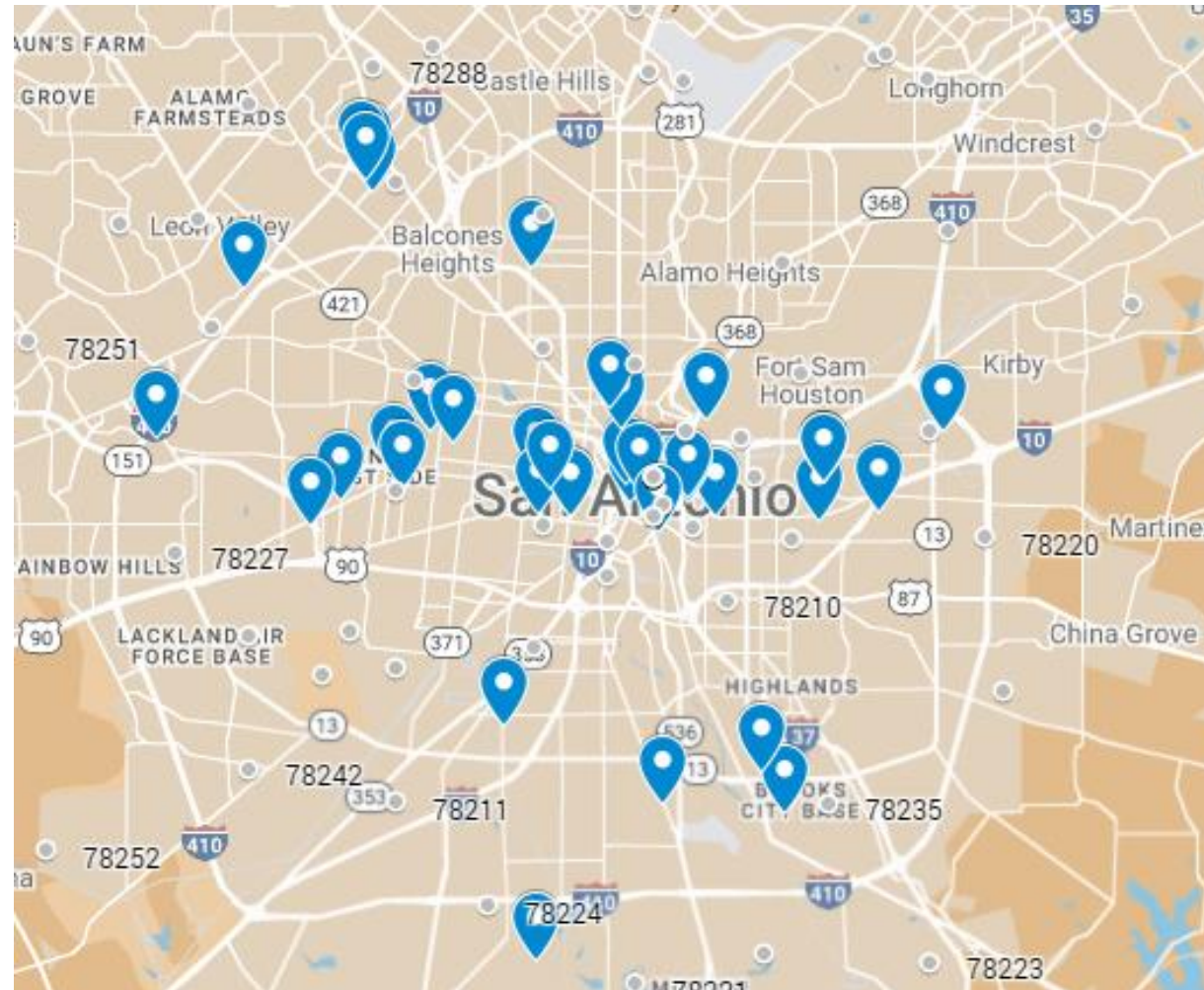
A Community Engagement *Journey* is an Iterative Expedition

- **Community Engagement is a living strategy that will and should shift as the school grows!**



Learning FROM Community, IN & WITH the Community

- Visited with 50 community agencies & 9 university departments since June 2023
- Via deep listening sessions-learned about the status of Public Health from a grounded perspective
 - *Deep listening is a way of “learning and togetherness” that requires listening, being present, & developing relationships respectfully, responsibly, and with reciprocity (Brearley, 2014).*
- Our goal: build meaningful, long-term partnerships that will impact Public Health in San Antonio & South Texas



Sample of Sites:

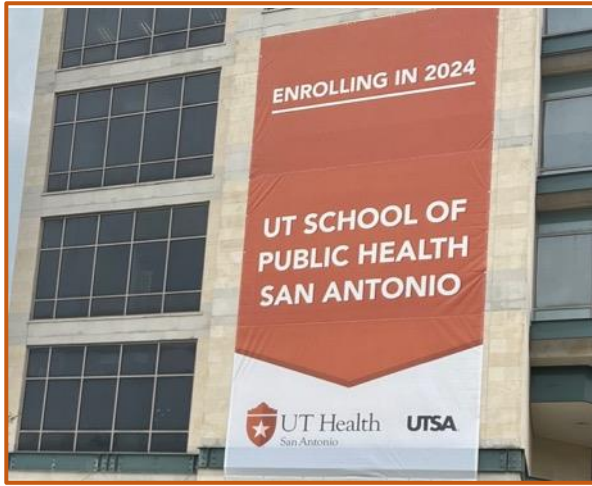
- Metropolitan Health District - COSA
- Bexar County Public Health Department
- CentroMed
- Child Safe
- Children's Hospital of San Antonio
- CommuniCare
- Edgewood Independent School District
- Girl Scouts of San Antonio
- Guadalupe Cultural Arts Center
- House of Neighborly Service
- Region 8- DSHS
- San Antonio Food Bank
- San Antonio for Growth on the East Side
- SAVE Clinic
- Texas BioMedical
- Texas Center for Infectious Diseases
- The Health Collaborative
- University Health

National Public Health Week

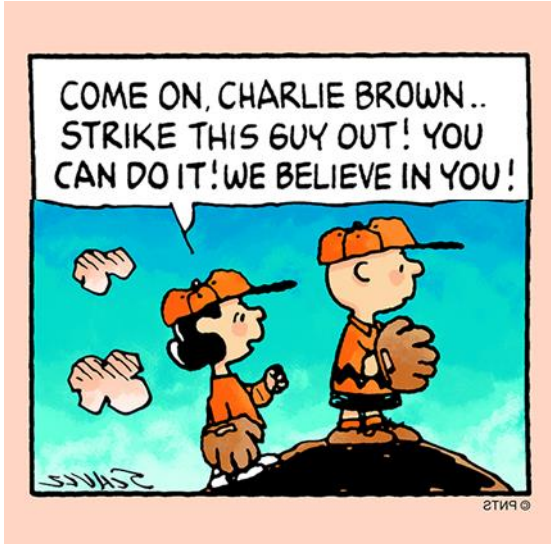
<https://campaigns.uthscsa.edu/nphw/>



<p>Daily Theme: RURAL Health MONDAY, APRIL 1</p> <p>Protecting, connecting, and thriving the public must include all people, including those living in rural areas of our country.</p> <p>Event: RURAL Health Webinar: Protecting, Connecting, and Thriving: Rural Public Health and Healthcare Time: 11 a.m. CST Venue: Online</p> <p>RSVP</p>	<p>Daily Theme: Healthy Neighborhoods TUESDAY, APRIL 2</p> <p>Protecting, connecting, and thriving amid our parks and green spaces around our homes and in our cities is critical to our public health and wellness.</p> <p>Event: Parks and Green Spaces in San Antonio Time: 7 p.m. Venue: Holly Auditorium, Main UT Health San Antonio Campus</p> <p>RSVP</p>	<p>Daily Theme: Protecting the Arts WEDNESDAY, APRIL 3</p> <p>Arte y Cultura is Public Health: HEALING IN EL MERO WESO</p> <p>April 3, 2024 11:30 am - 1 pm Guadalupe Latino Bookstore 1300 Guadalupe St., San Antonio, Tx 78207</p> <p>Presented by: </p>	<p>Daily Theme: Educate, Empower, Grow THURSDAY, APRIL 4</p> <p>Learning about our community's health challenges and ways to public health and ways to enact change are important to all.</p> <p>Event: Arte y Cultura is Public Health Time: 12 p.m. Venue: Guadalupe Cultural Arts Center</p> <p>Event: Commemorative Tree Planting Time: 10 a.m. Venue: School of Public Health</p> <p>We invite you to attend the School of Public Health for a commemorative tree planting featuring the City of San Antonio Urban Forestry Division. We're not just nurturing its roots in the soil, but fostering a legacy that grows alongside our students, branching out with knowledge, strength, and supporting the health and well-being of all our people.</p> <p>Event: Health Literacy Day Time: All Day Venue: School of Public Health Social Media channels</p>	<p>Daily Theme: Protecting the Performing Arts FRIDAY, APRIL 5</p> <p>As public health stewards, we vow to protect our performing arts, connect with professional theater, and thrive together.</p> <p>Event: Theater + Public Health Time: 11:05 a.m. Venue: San Pedro Playhouse</p> <p>RSVP</p>
<p>Daily Theme: Walk for Wellness SATURDAY, APRIL 6</p> <p>It's important to Move! for longevity, wellness, and overall health.</p> <p>Event: Walk with a Doc Time: 8 a.m. Venue: O. P. Schnabel Park</p> <p>Learn More</p>				



Thanks
for Your
Support



**Vasan S. Ramachandran, MD, vasan@uthscsa.edu
<https://uthscsa.edu/public-health>**