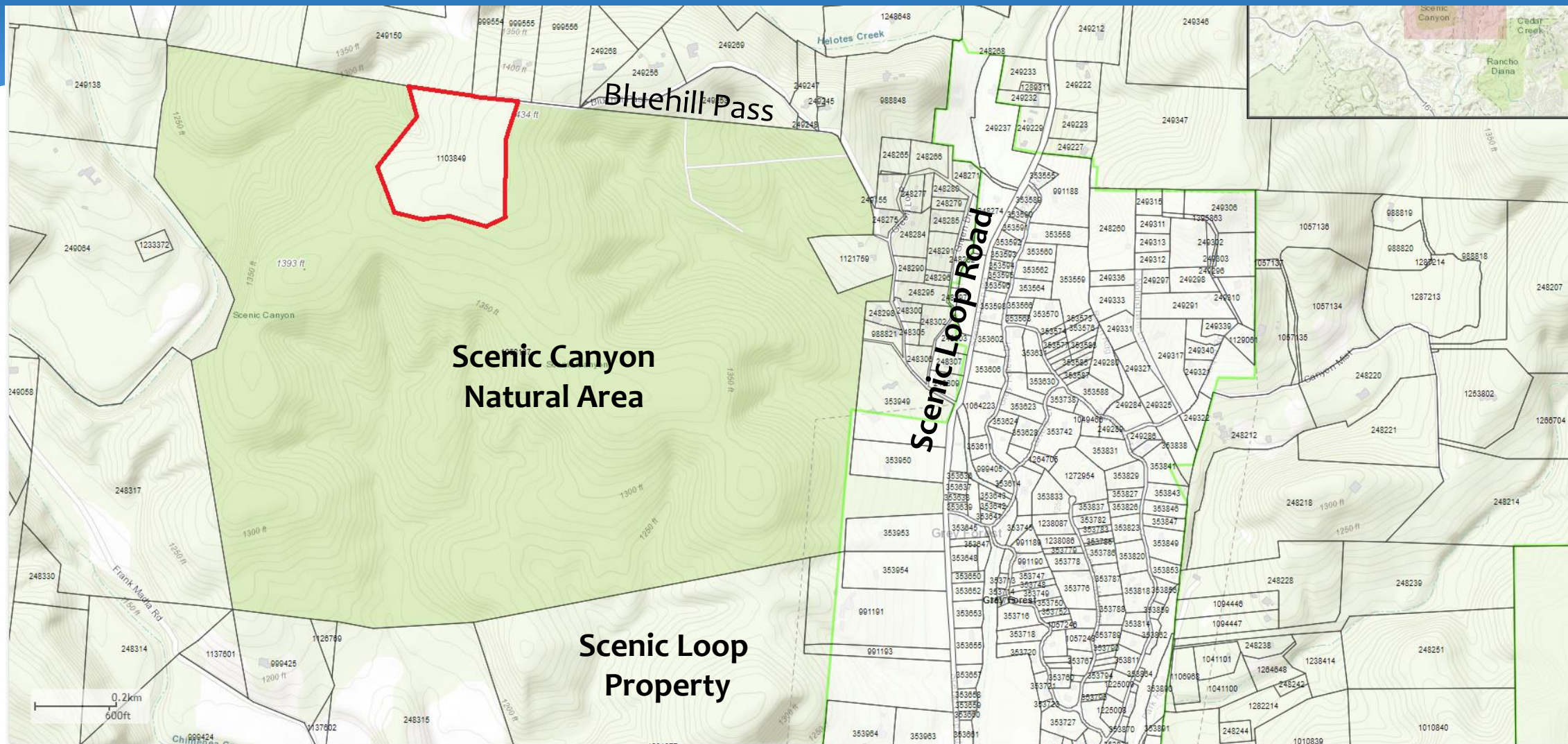


# The Nature Conservancy



Hoover Property  
Gilleland Ranch Phase II





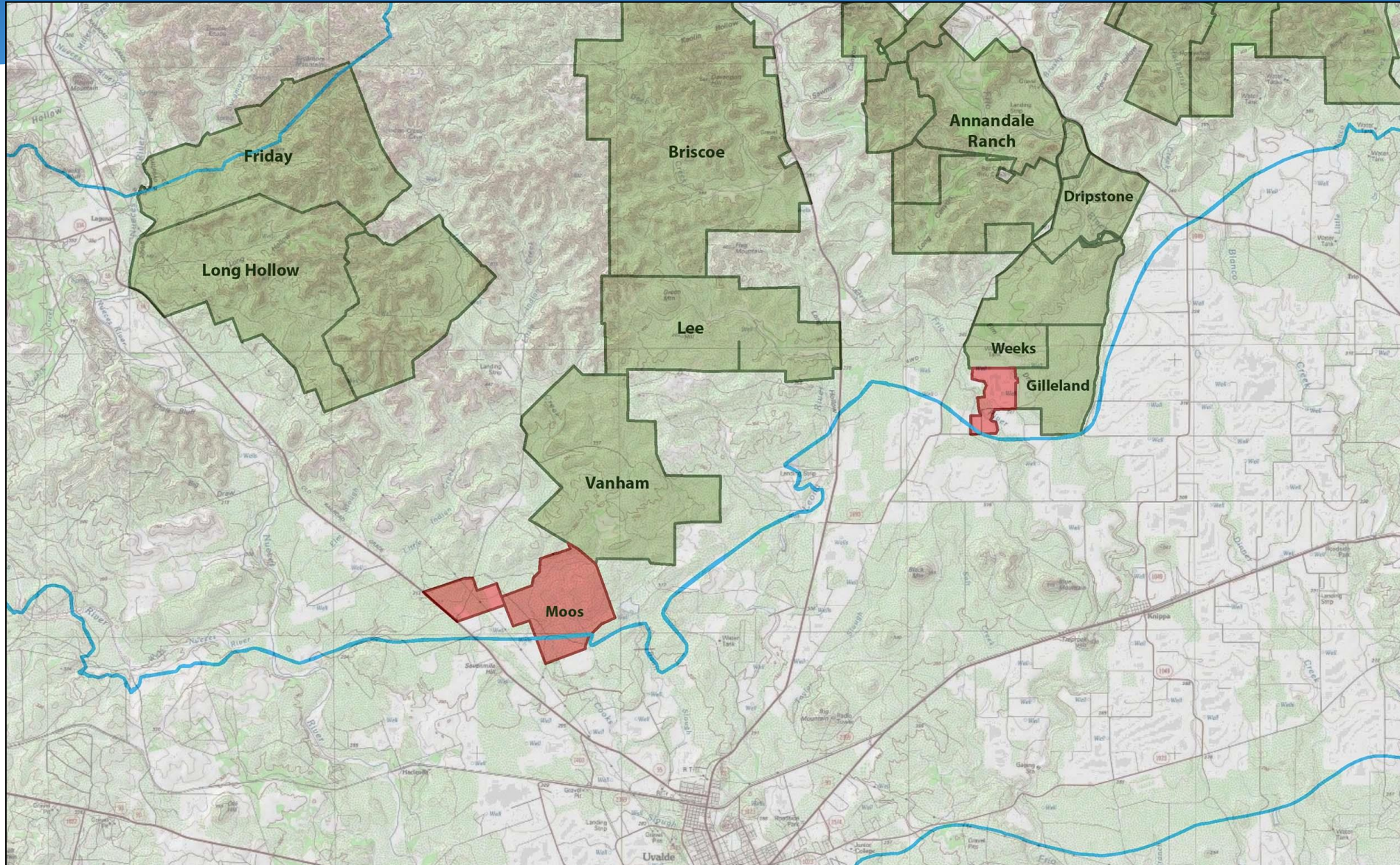
## Hoover Property – 20 Acres Bexar County

- Top 10% of SET Model
  - Located directly adjacent to Scenic Canyon Natural Area on Bluehill Pass
  - Owner seeking to sell property
- **Requesting Stage 1 approval**





## Gilleland Ranch Phase II – 565.25 Acres Uvalde County





## Gilleland Ranch Phase II – 565.25 Acres Uvalde County

- Located in Recharge and Artesian Zones adjacent to existing COSA easements
- Several recharge features
- Top 10% in SET model; EAA ranked moderate for water quantity and quality

➤ **Requesting Stage 2 approval**

