

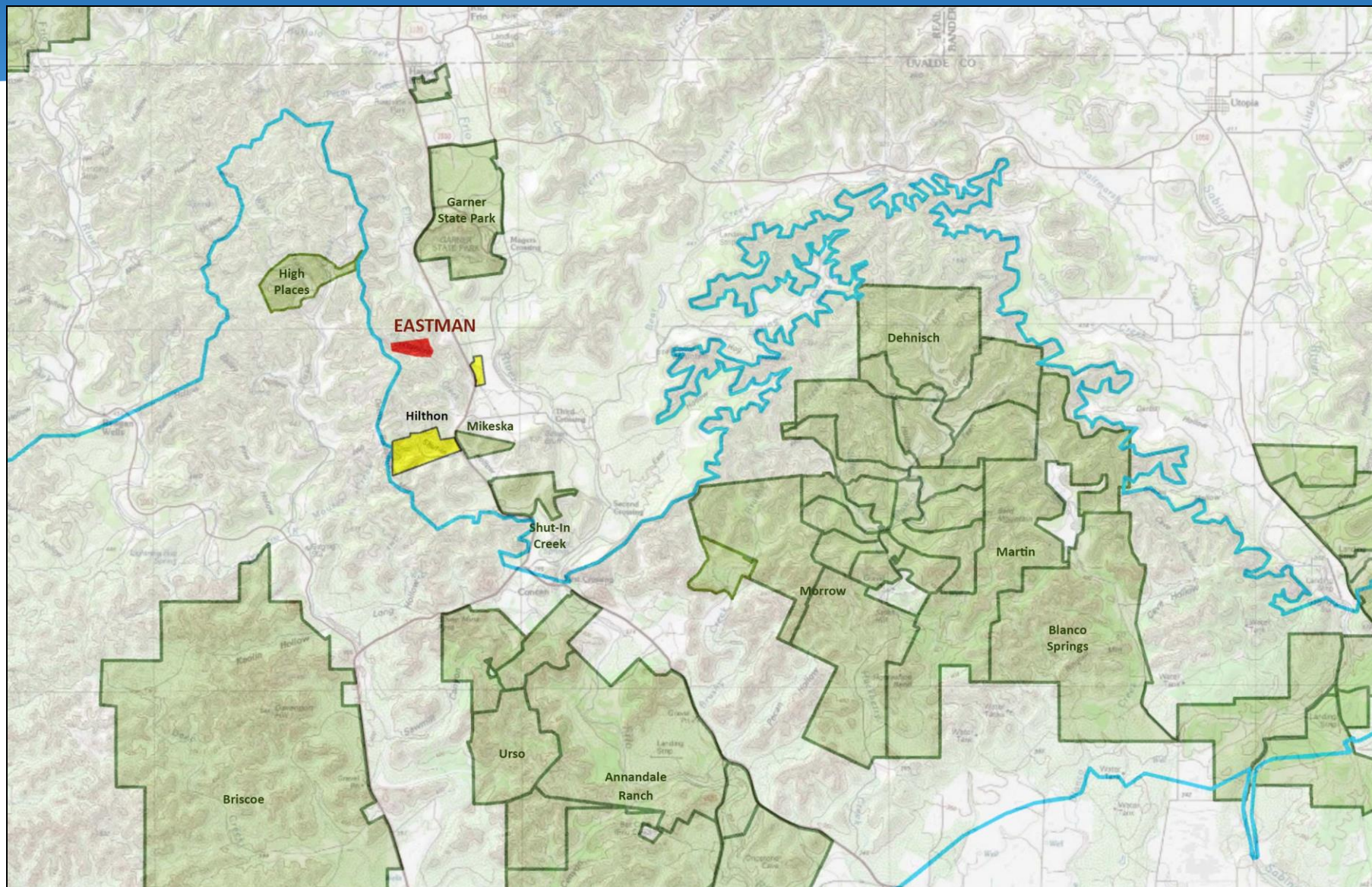


Sycamore Creek (Eastman) Ranch  
Triesch Ranch  
Gilleland Ranch Phase II



# Sycamore Creek (Eastman) Ranch – 112.11 Acres

## Uvalde County



## Sycamore Creek (Eastman) Ranch – 112.11 Acres Uvalde County

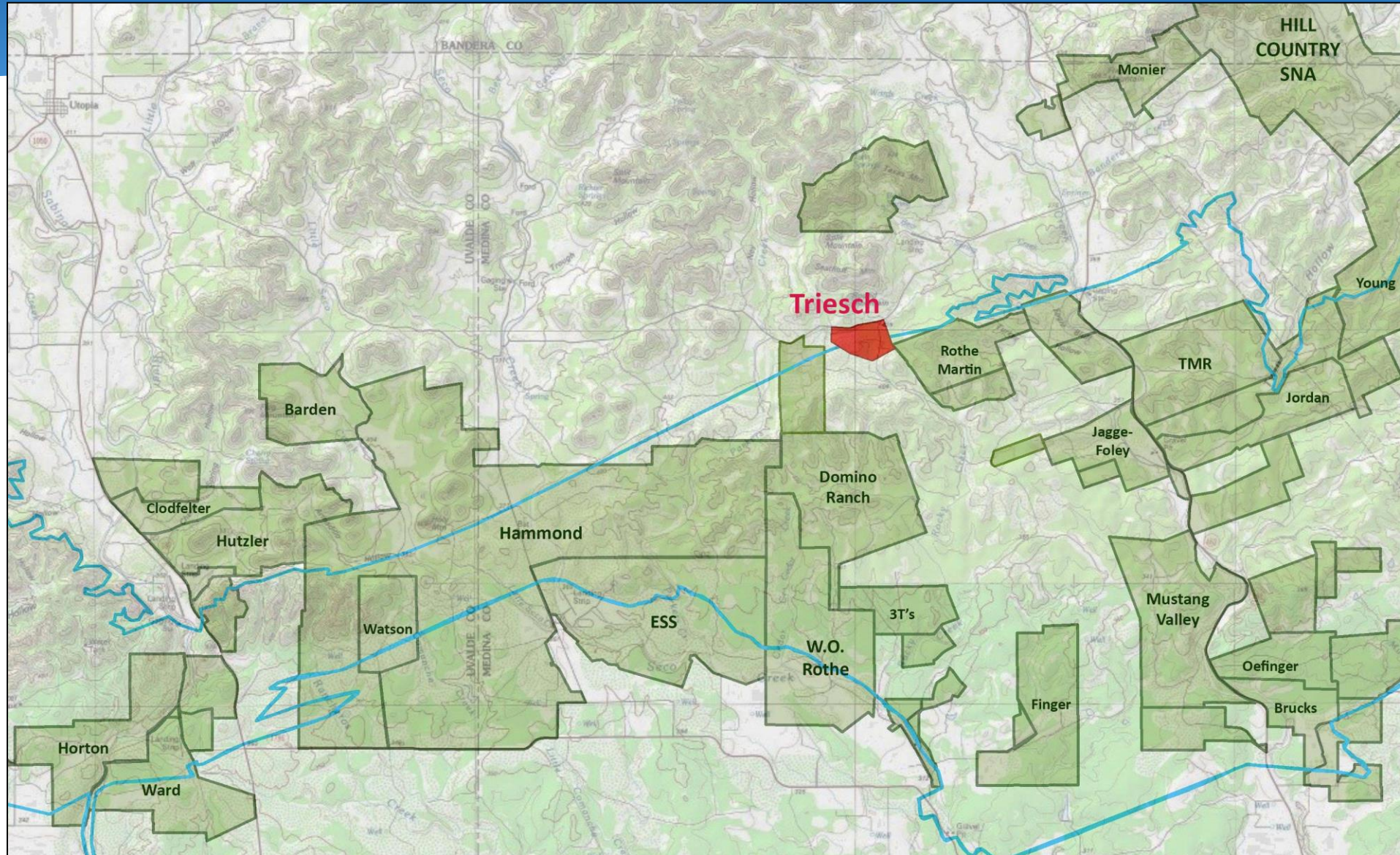
### Sycamore Creek Ranch

- Located near Garner State Park, High Places, Shut-in Valley, Mikeska and Hilthorn ranches
- Contributing Zone; rapidly developing area near Concan
- Geo assessment found high water quality and quantity benefit

➤ **Requesting Final Approval**



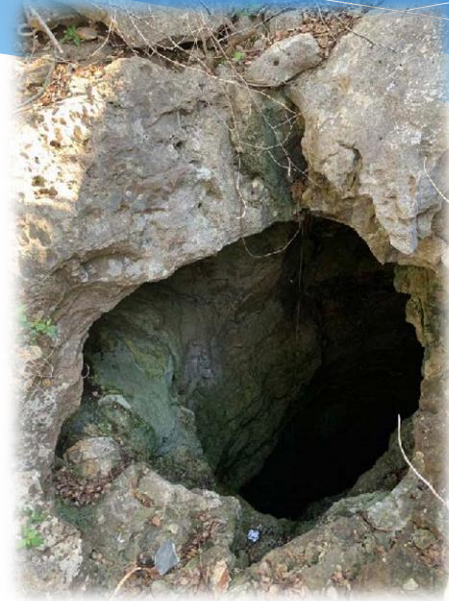
# Triesch Ranch – 292.677 Acres Medina County



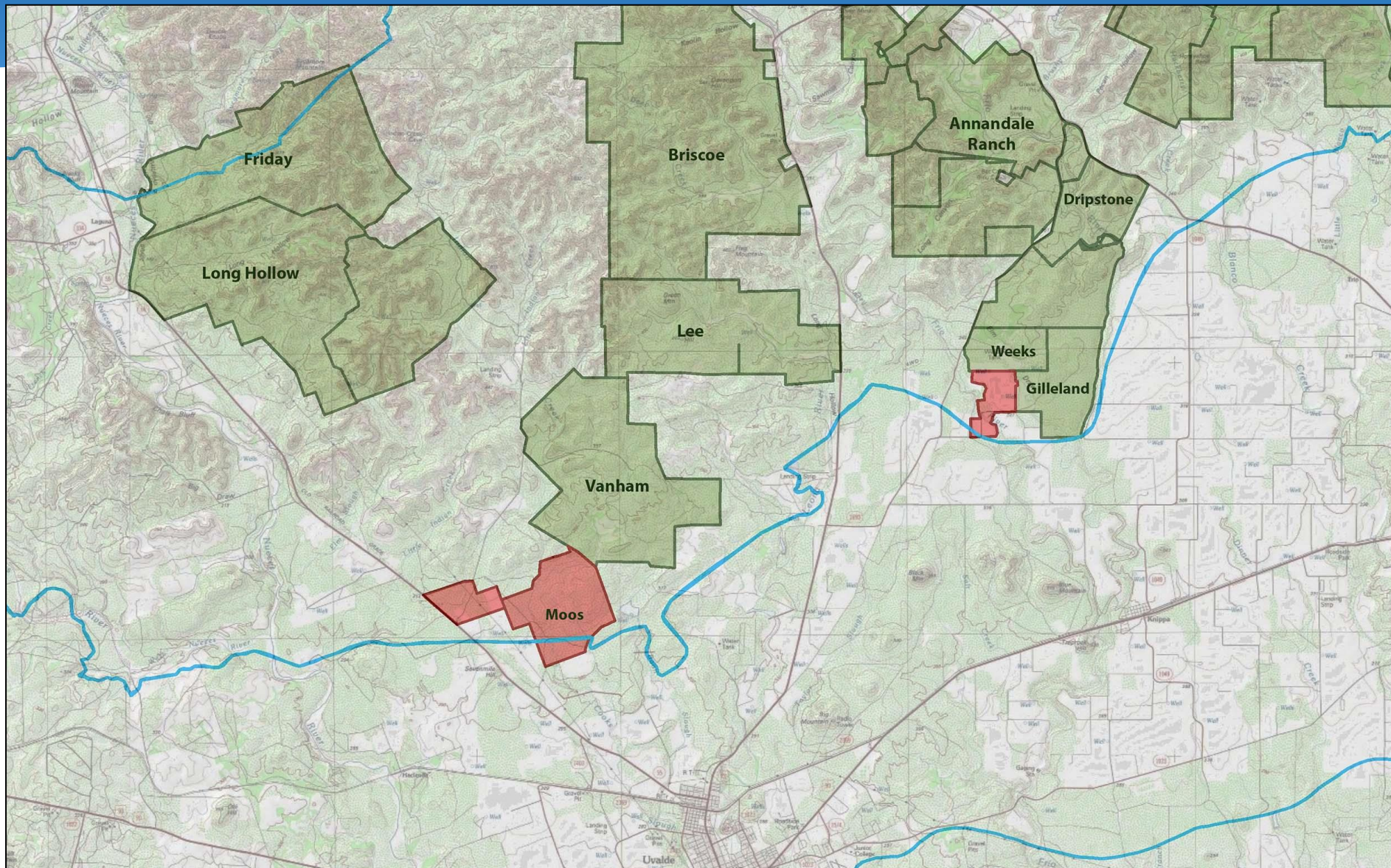
## Triesch Ranch

- Located near Rothe Martin, Dillingham, Domino and Providence Springs ranches
- Part Recharge Zone, part Contributing Zone
- EAA found high water quality and quantity benefit; sinkhole and other karst features

➤ **Requesting Stage 2 approval**



## Gilleland Ranch Phase II – 565.25 Acres Uvalde County



## Gilleland Ranch Phase II – 565.25 Acres Uvalde County

### Gilleland Ranch Phase II

- Located in Recharge and Artesian Zones adjacent to existing COSA easements
- Several recharge features
- Top 10% in SET model; EAA ranked moderate for water quantity and quality
- **Requesting Stage 2 approval**

