

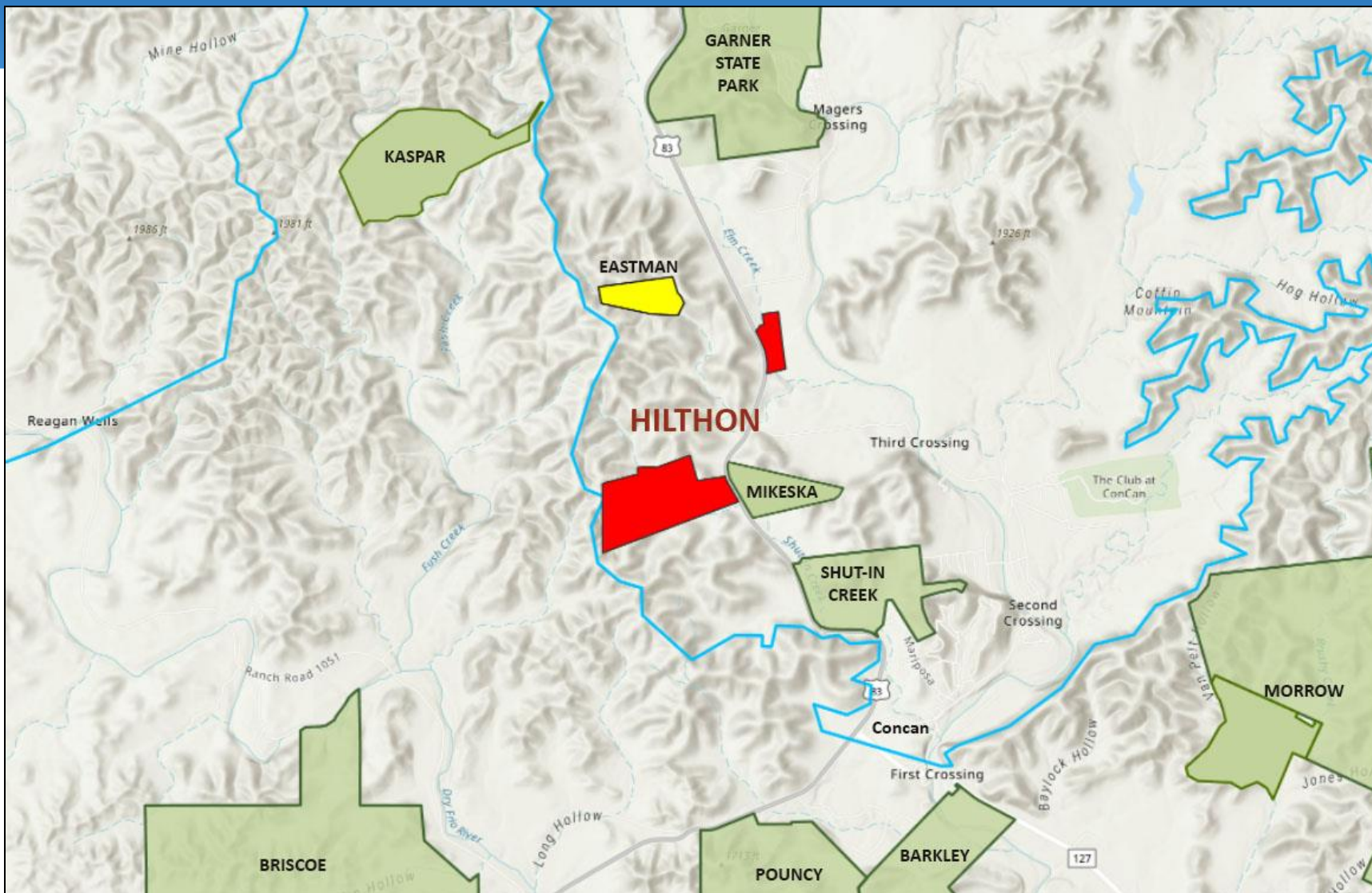
The Nature Conservancy



Hilthon Ranch
Hoover Property

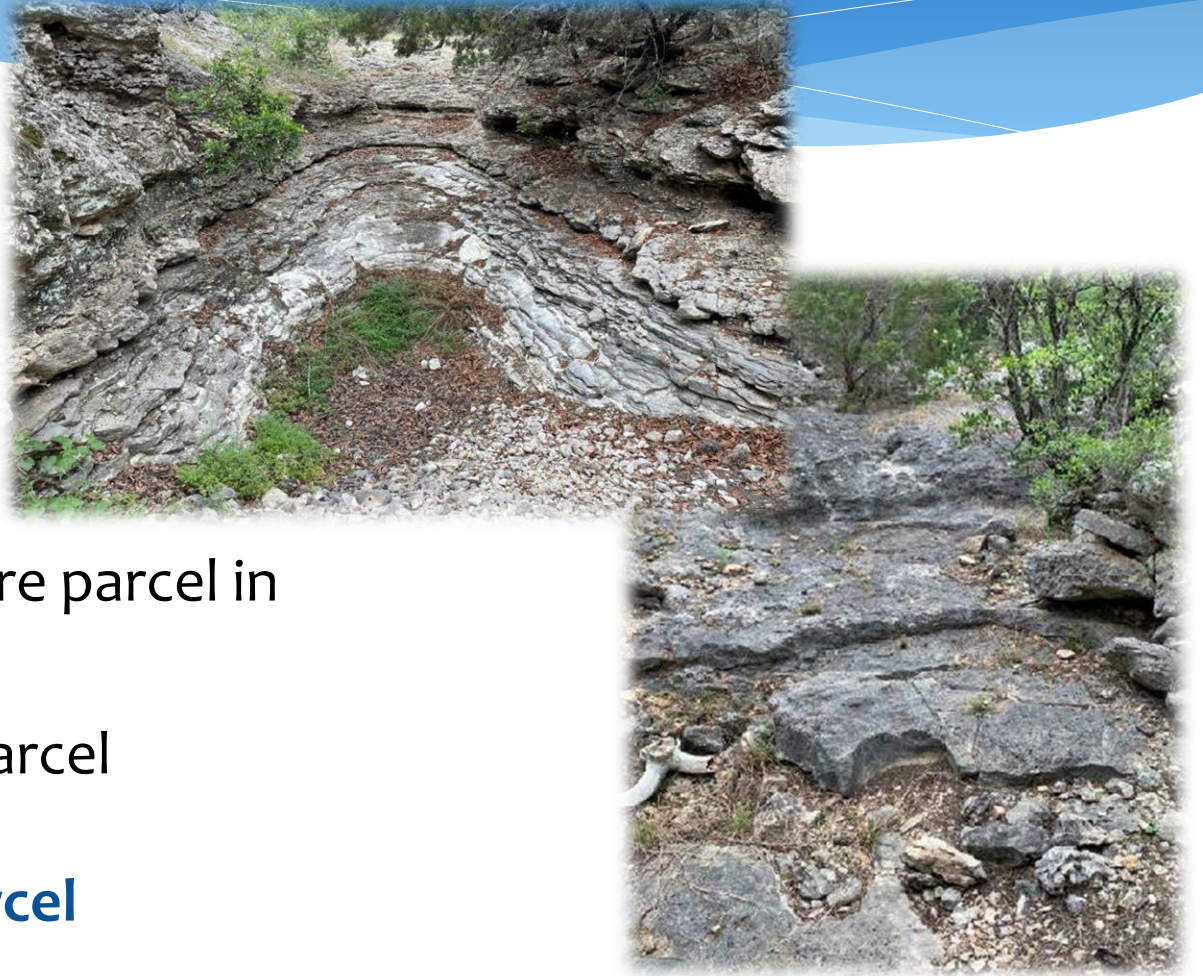


Hilthon Ranch (59.95 Acres) Uvalde County

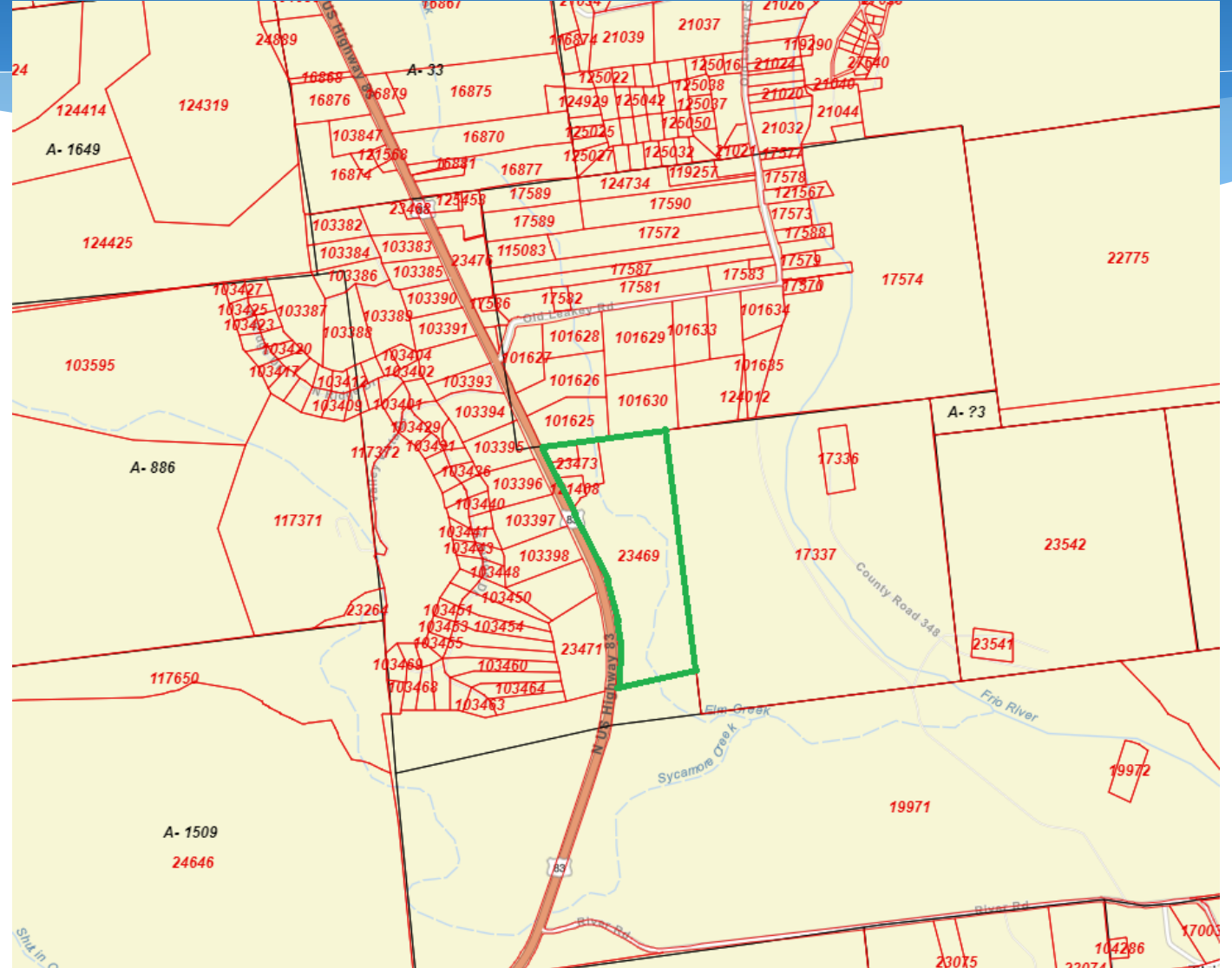
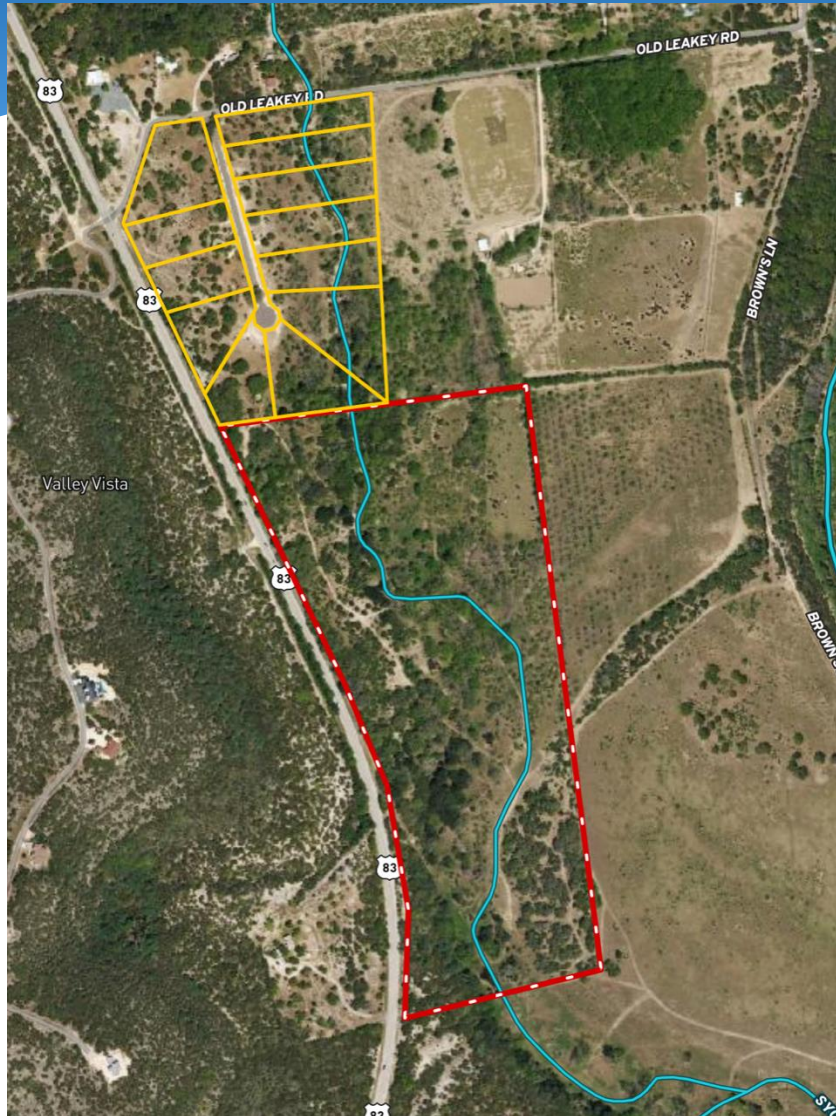


Hilthon Ranch (59.95 Acres) Uvalde County

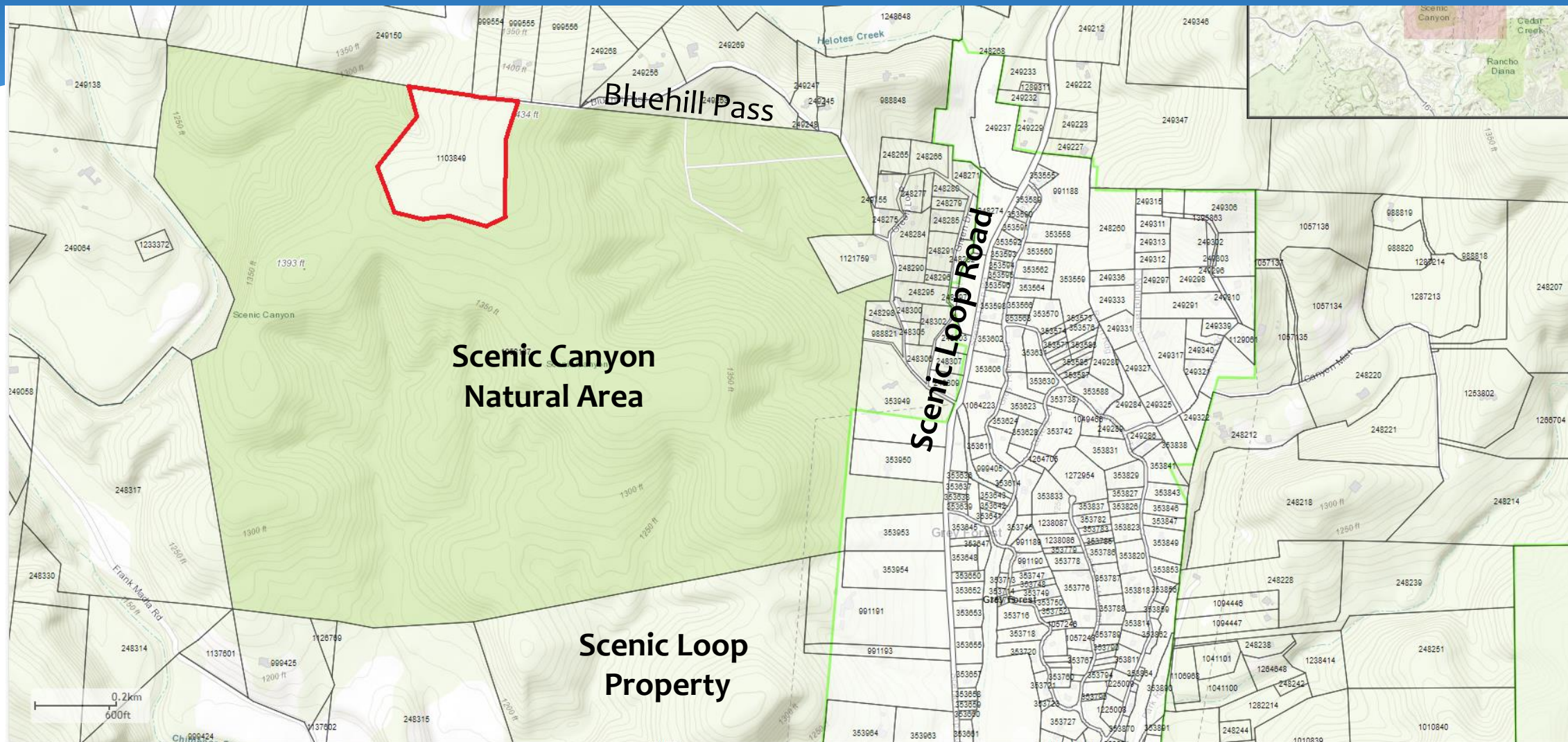
- Two non-contiguous parcels
- Located in Contributing Zone adjacent to Mikeska Ranch
- Includes Shut-in Creek
- Top 50% in SET model
- CAB approved acquisition of CE on 346.71 acre parcel in February 2024
- Owner offering bargain sale on 59.95 acre parcel
- **Requesting Final Approval of 59.95 Acre Parcel**



Hilthon Ranch (59.95 Acres) Uvalde County



Hoover Property (~20 Acres) Bexar County



Hoover Property (~20 Acres) Bexar County

- Top 10% of SET Model
- Located directly adjacent to Scenic Canyon Natural Area on Bluehill Pass
- Owner seeking to sell property
- Appraisal completed
- **Stage 1 due diligence continuation**

