



**METROPOLITAN
HEALTH DISTRICT**

Reproductive Justice Fund

FY 2024



Reproductive Justice Fund History



- City Council allocated \$500,000 on Sept. 14, 2023, to establish a Reproductive Justice Fund.
- Similar funds exist in Austin, Harris County, St. Louis, Chicago, Columbus, New York City, Seattle and Portland, as well as six states (OR, CA, NM, MN, NJ, NY).
- Purposes have included clinic capacity-building for maternal and reproductive health, community outreach, and abortion access.
- Allocated to Metro Health, whose portfolio includes a Black maternal and mental health priority.

SUPPORTING HEALTHY MAMAS
BIRTHING HEALTHY BABIES
A DAY OF CELEBRATION

APRIL 13, 2024
10:00 a.m. - 2:00 p.m.

ChildSafe
3730 Interstate 10
San Antonio, TX 78220

Metro Health invites moms and their loved ones to our Black Maternal Health Week Day of Celebration! Join us for fun family-friendly activities, interactive information sessions, and a delicious lunch. Meet with community members and organizations dedicated to improving health outcomes for black mothers and their babies in San Antonio.

- Lived Experiences Panel Discussion
- Door Prizes
- STD/HIV Testing
- Healthy Families Resources

BLACK MATERNAL HEALTH WEEK APRIL 11 - 17, 2024

For more information contact:
Sian.Elmore@sanantonio.gov
Sarah.Wagner@sanantonio.gov

Scan the QR Code to RSVP

Reproductive Justice



“Reproductive Justice means the human right to control our sexuality, our gender, our work, and our reproduction.” - National Black Women's Reproductive Justice Agenda



- Right to have children
- Right not to have children
- Right to nurture the children we have in a safe and healthy environment
- Framework and a movement founded by Black women in 1994

A Frayed Safety Net



- Texas leads nation in uninsured women (1 in 4)
- For low-cost/no-cost family planning services, cancer screening and STI testing:
 - Federal Title X program is one-third of its former size
 - Healthy Texas Women and Family Planning Programs: More applications were denied than approved in 2020-21
- *Lawfully present* immigrant adults are barred from Medicaid

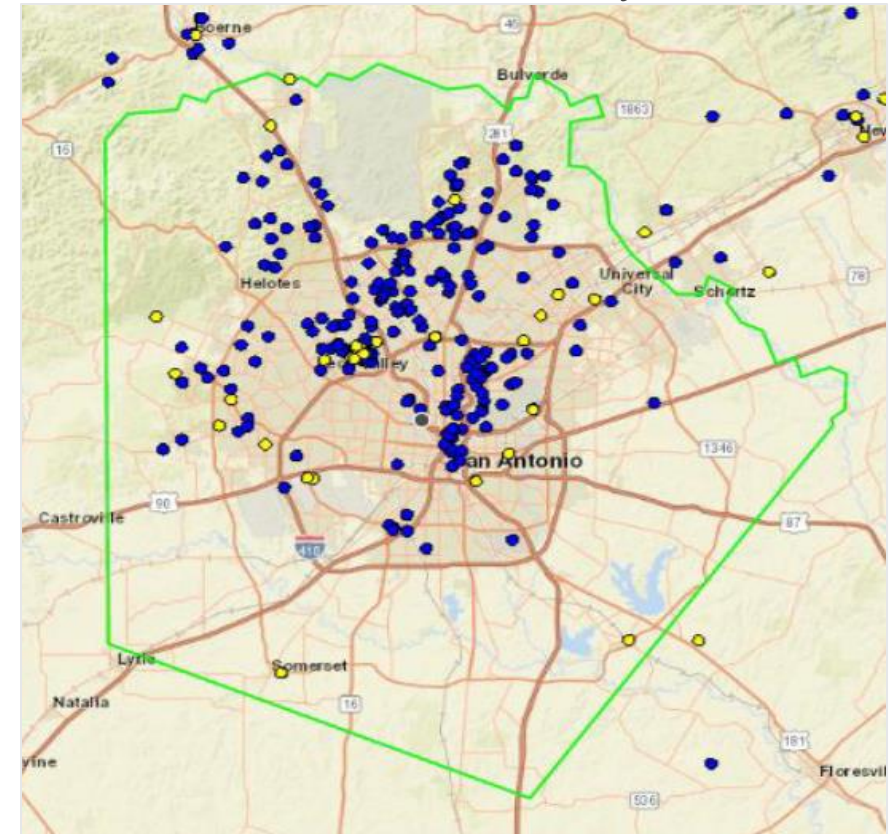


Reproductive Health Gaps



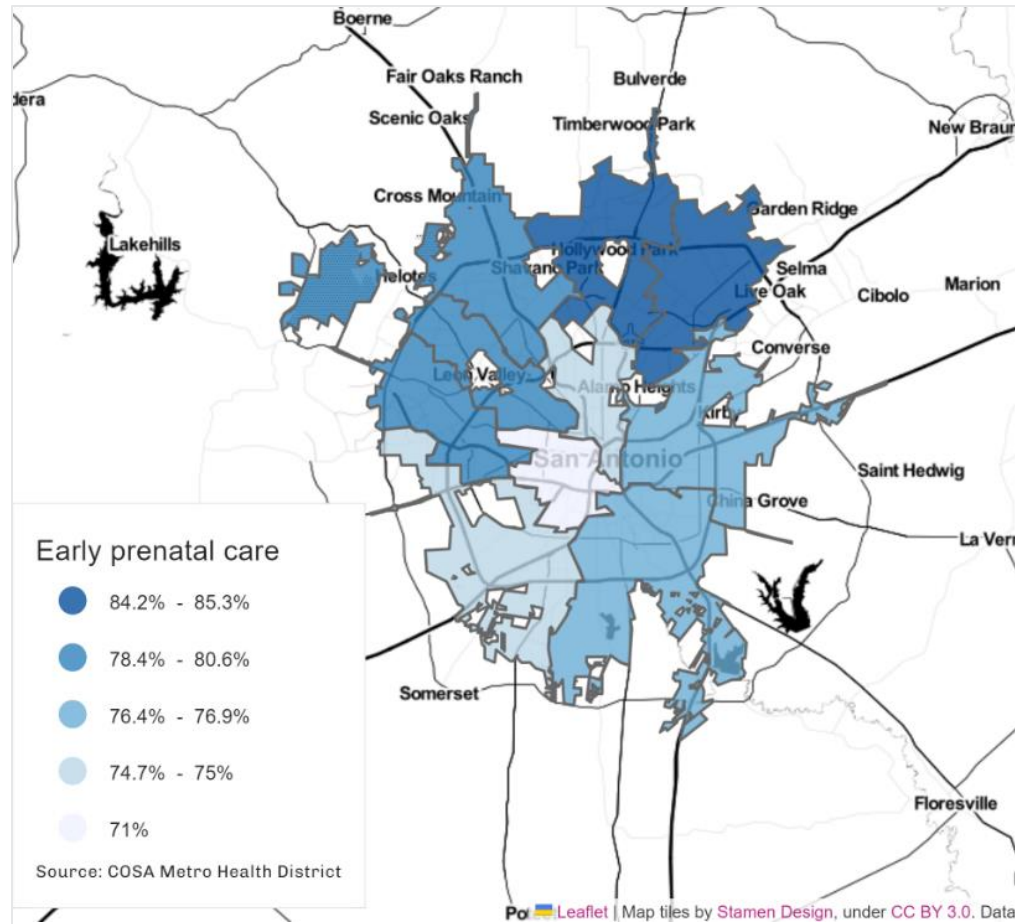
- 1. Access to Contraception:** 1 in 2 U.S. residents at less than 250% of Federal Poverty Level cannot access their contraceptive method of choice (*Healthy People 2030, 2015 data*)

Geographical Distribution of Ob-Gyns and Midwives in Bexar County



Map from *Access to Health Care During the COVID-19 Pandemic*, Metro Health. Data Source: American Med. Assn.

Reproductive Health Gaps



2. Access to Prenatal Care: 1 in 4 pregnancies in Bexar County began prenatal care after the first trimester (*CDC, 2022 data*).

From 2018 to 2021, Bexar County fared better than the state and the nation, but that trend reversed in 2022.

Map from Bexar Data Dive, CI: NOW. Data Source: Metro Health

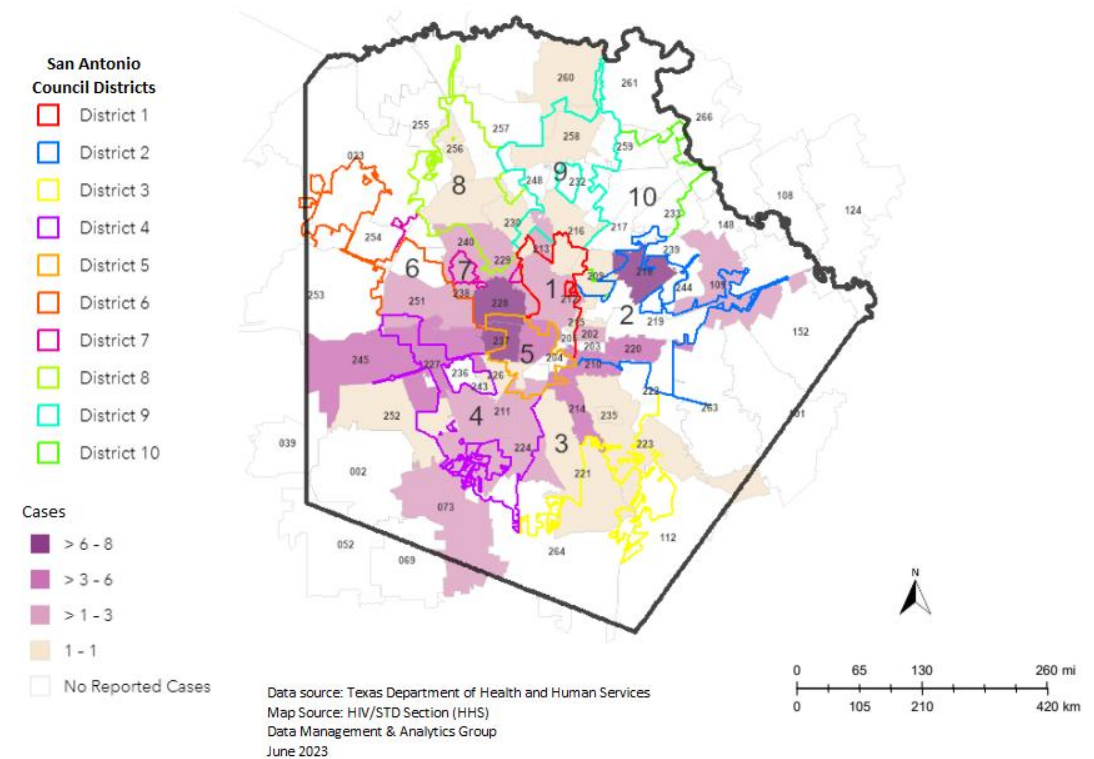
Reproductive Health Gaps



3. Screening and Care for Sexually Transmitted Infections (STIs): 1 in 5 U.S. residents on any given day has an STI (*CDC, 2018 data*).

Congenital syphilis in Bexar County occurred at 4 times the national rate in 2021.

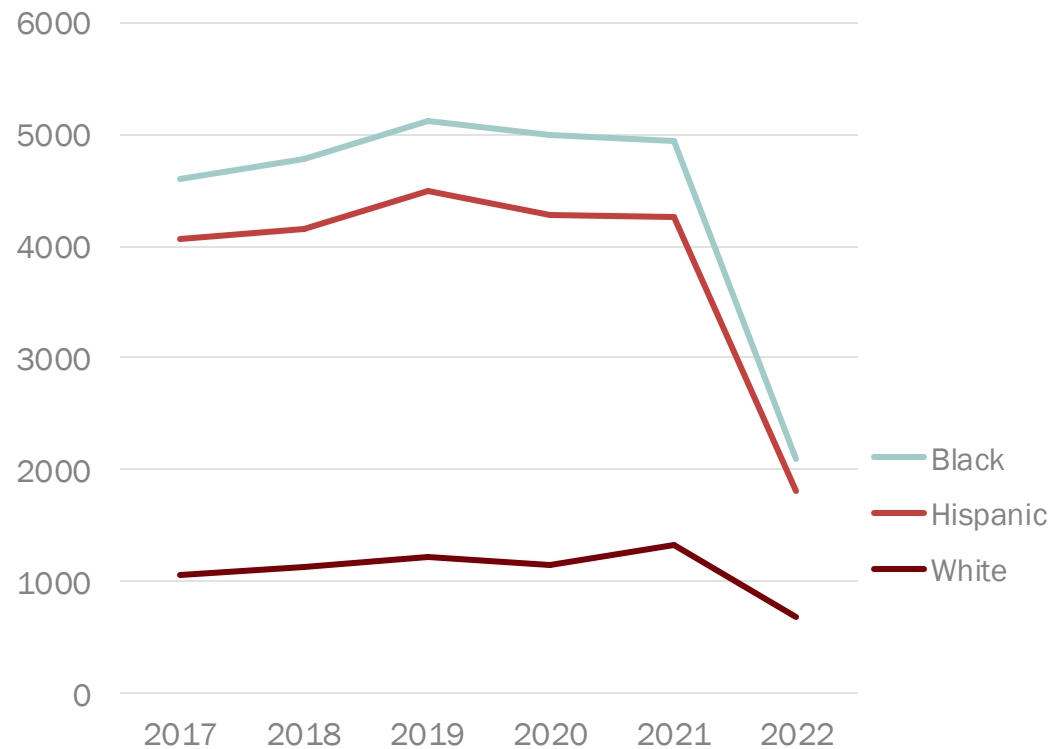
Congenital Syphilis Cases in Bexar County Population, 2021



Reproductive Health Gaps



Bexar County Abortions by Race/Ethnicity, 2017-2022



Source: Texas Department of State Health Services

- 4. Access to Abortion: 1 in 8 U.S.** pregnancies ended in abortion before Dobbs (*CDC, 2019 data*). Texas reported 52,495 abortions in 2021, compared to 52 from Jan.-Oct. 2023 (*Texas Department of State Health Services*).

Metro Health: Limited Clinical Women's Health Services



- STI Care
- HPV Vaccination
- Health Education and Ancillary Services
- Coalition Support
- **Ambulatory clinics transferred to University Health in 2008**

Women, Infants & Children (WIC)

San Antonio Lactation Support Center

Healthy Start case management outreach

Healthy Beats
nurse case management for syphilis in pregnancy

Congenital syphilis and perinatal Hepatitis B programs

Domestic Violence case management

Collaborative Commission on Domestic Violence

Healthy Families Network coalition to reduce infant mortality

Black Maternal Health Week annual event

Recommended Well Woman Care¹

General Health

- *Screenings*: Blood pressure, diabetes, lipids, depression/anxiety, healthy diet & activity, alcohol/tobacco/substance use, partner violence, folic acid use, osteoporosis, urinary incontinence
- *Family planning*

Infectious Disease

- *STIs*: Chlamydia, gonorrhea, syphilis, HIV, Hepatitis B & C; TB if indicated
- *Immunizations* including Varicella, MMR, HPV, Tdap, COVID, flu, RSV in pregnancy

Cancer Screening

- Cervical, breast, colon. Others only as indicated.

Pregnancy & Postpartum: Items above plus breastfeeding counseling, pre-eclampsia screening & prevention, folic acid, Rh blood typing, healthy weight, bacteriuria screen

**Comprehensive, low-cost women's health care is offered at
University Health, CentroMed and Communicare**

Return on Investment

- **Family Planning Visits:** \$4.02 saved per \$1 spent (*CDC, 2003*)
- **Prenatal Care for People at High Risk:** Up to \$3 per \$1 spent (*Institutes of Medicine, 1985*)
- **Community Health Workers:** \$2.47 saved per \$1 spent (*U. Penn, 2020*)
- **HIV Testing:** \$1.95 saved per \$1 spent (*CDC, 2011*)



What Other Cities Are Doing



Health Education

Harris Co.: part of \$6 million

Austin: \$200,000

St. Louis: \$161,852



Ob-Gyn Access & Wraparound Care

Harris Co: part of \$6 million

New York: \$2.2 million

Chicago: \$500,000

St. Louis: \$288,721



Abortion Access

Columbus, OH: \$1 million

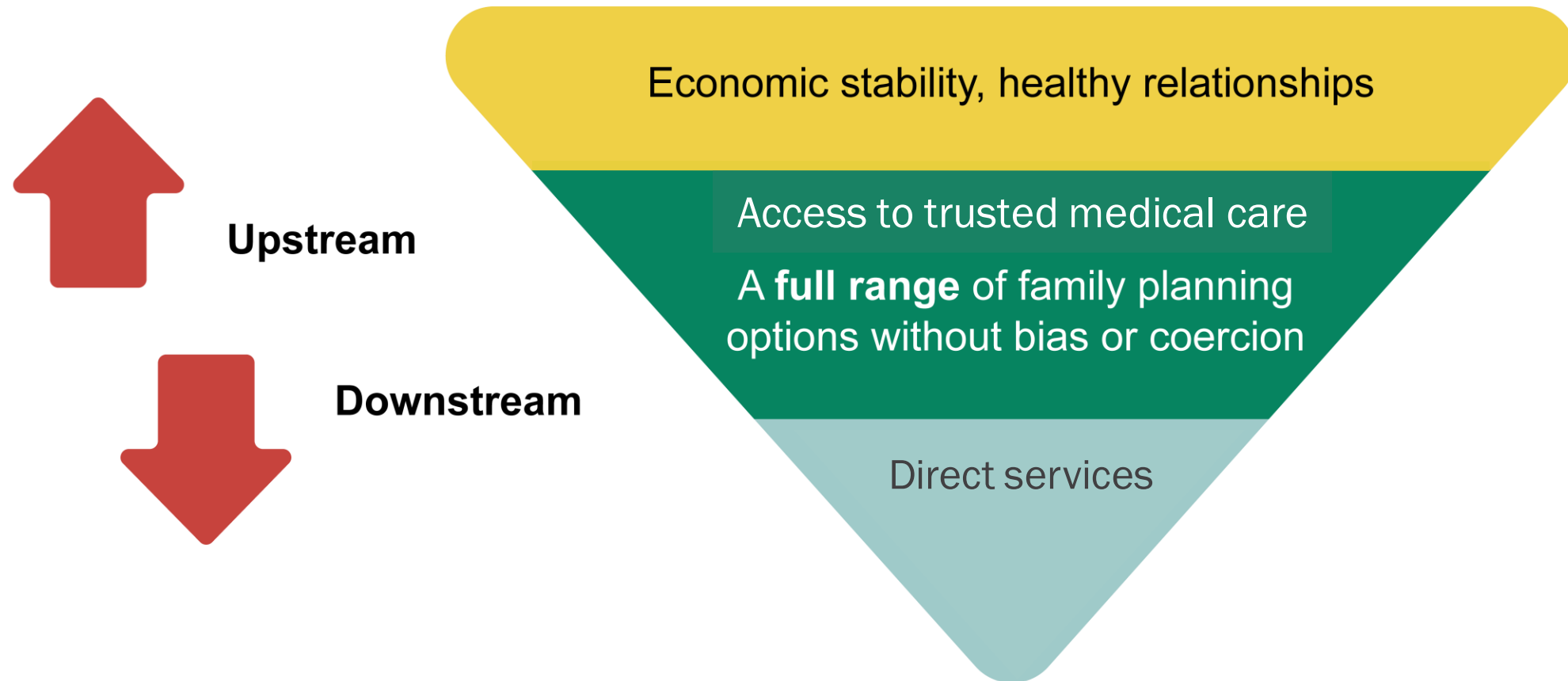
St. Louis: \$1 million*

New York: \$250,000

Seattle: \$250,000

Portland: \$200,000

Public Health's Upstream Focus



Strengthening upstream initiatives can reduce the need for downstream services

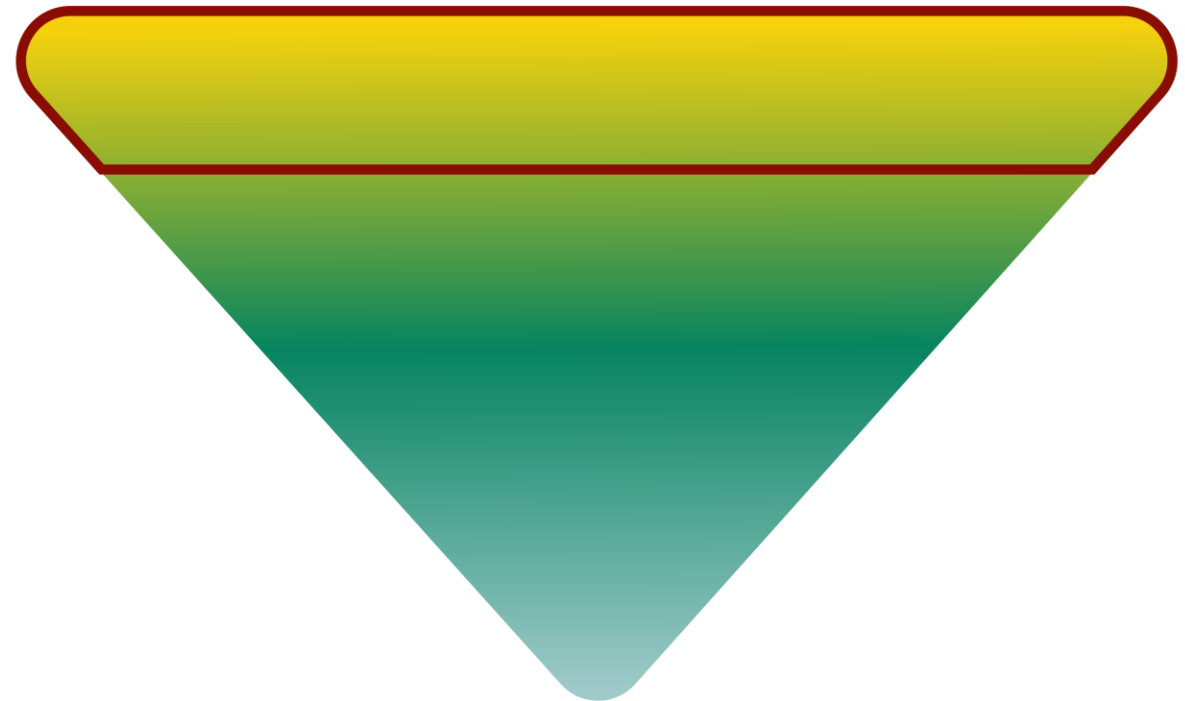
Reproductive Justice Fund: Current Needs



- Support capacity-building initiatives by partners and strategic messaging by Health Equity Network (Policy & Civic Engagement Office):
 - Food insecurity
 - Housing security
 - Access to respectful care



Upstream

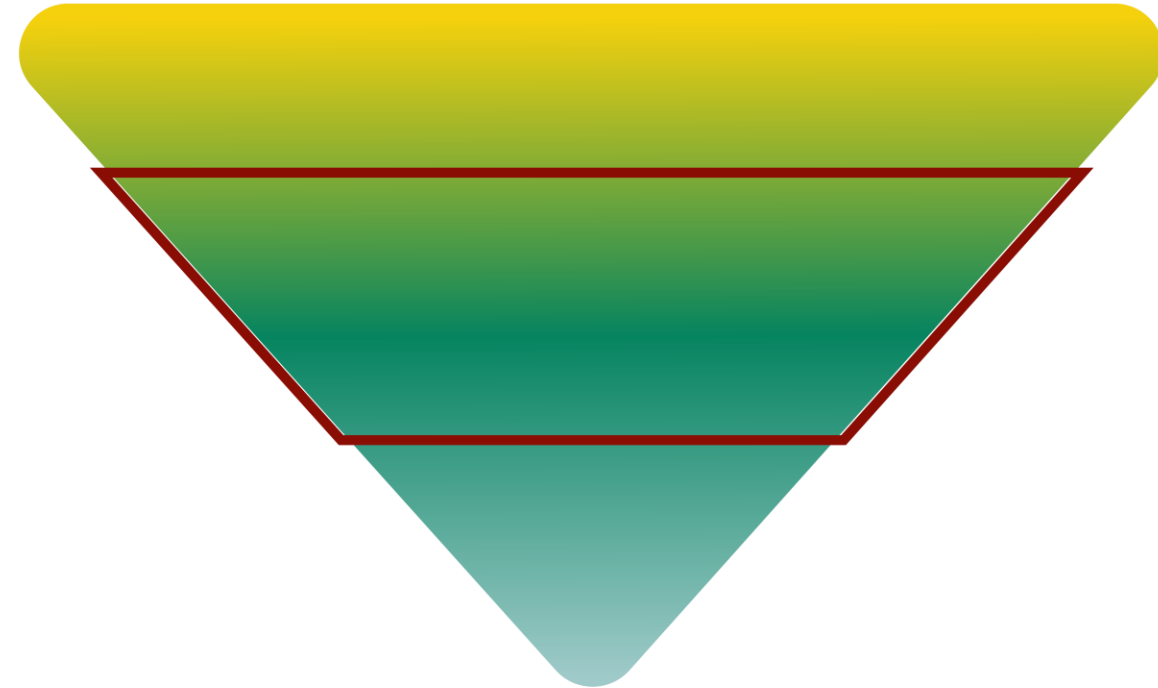


Reproductive Justice Fund: Current Needs



- Reproductive health-focused CHWs, care navigators and patient advocates
- Sexual health education for youths
- Contraception training for family medicine providers in priority geographic areas (*e.g. \$56K would train 150 providers*)
- Navigation to insurance and Texas programs, well woman care, family planning
- Showcasing accessible, respectful providers of quality women's health care (*e.g. CARE Initiative - \$20K*)
- Doula training scholarships

Midstream

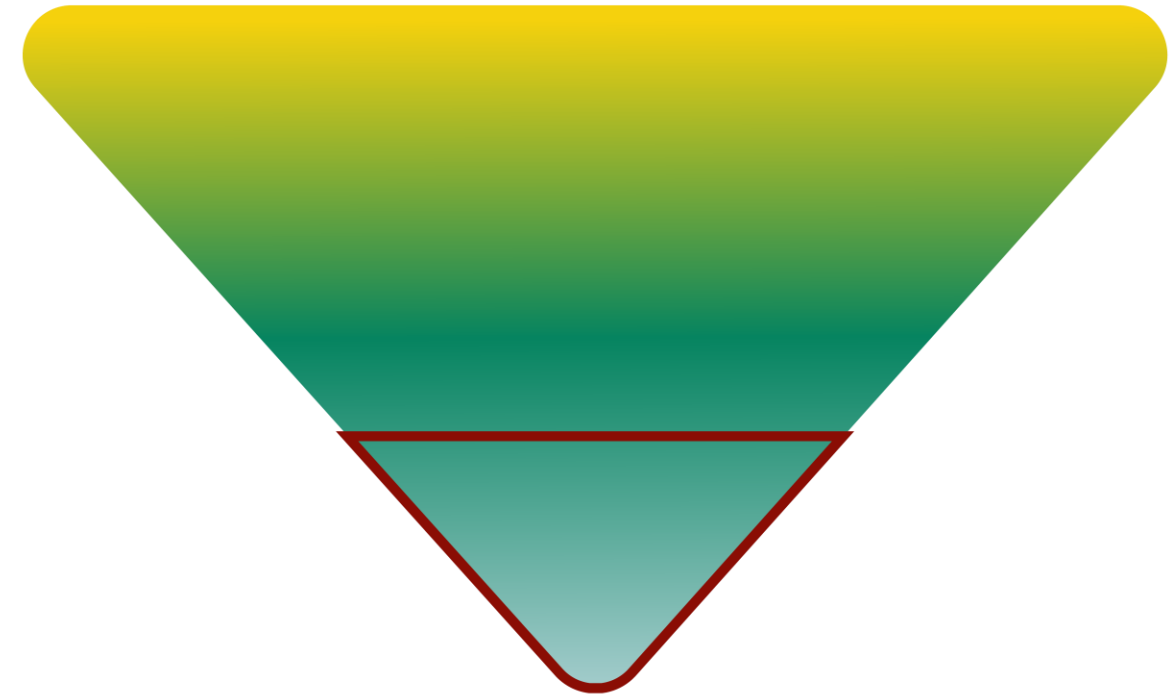


Reproductive Justice Fund: Current Needs



- Home pregnancy tests
- Emergency contraception
- Transportation to prenatal care
- Subsidized doulas
- Black maternal mental health care visits
- Telehealth visits for STIs
- STI home test kits
- Transportation to abortion care

Downstream



RFP Criteria

All organizations will need to meet City Procurement, contracting and audit criteria. Preference will be given to organizations that:

- Serve and empower those most affected by reproductive health disparities
- Provide culturally and linguistically appropriate services in priority geographic areas
- Include upstream/midstream approaches

Health Equity = Everyone has a fair opportunity to live a long and healthy life.



RFP Allocation



Staff Recommends:

30% Upstream (\$150,000)

50% Midstream (\$250,000)

20% Downstream (\$100,000)

Timeline



Summer 2024:
RFP

Fall 2024:
Council Action

Winter '24-'25:
Contracts
Executed

FY25-26:
Implementation



THANK YOU

Dr. Claude Jacob
Claude.Jacob@sanantonio.gov

Dr. Junda Woo
Junda.Woo@sanantonio.gov

Questions?