

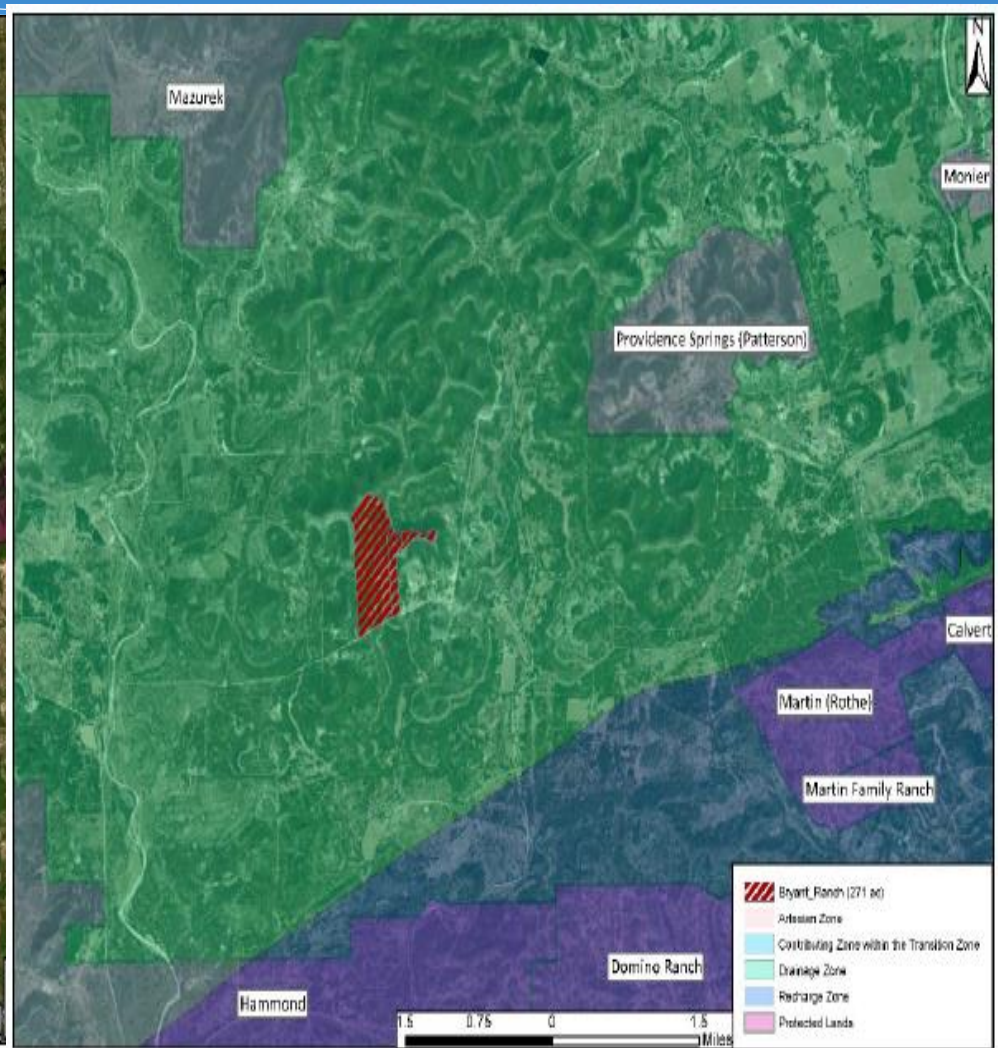
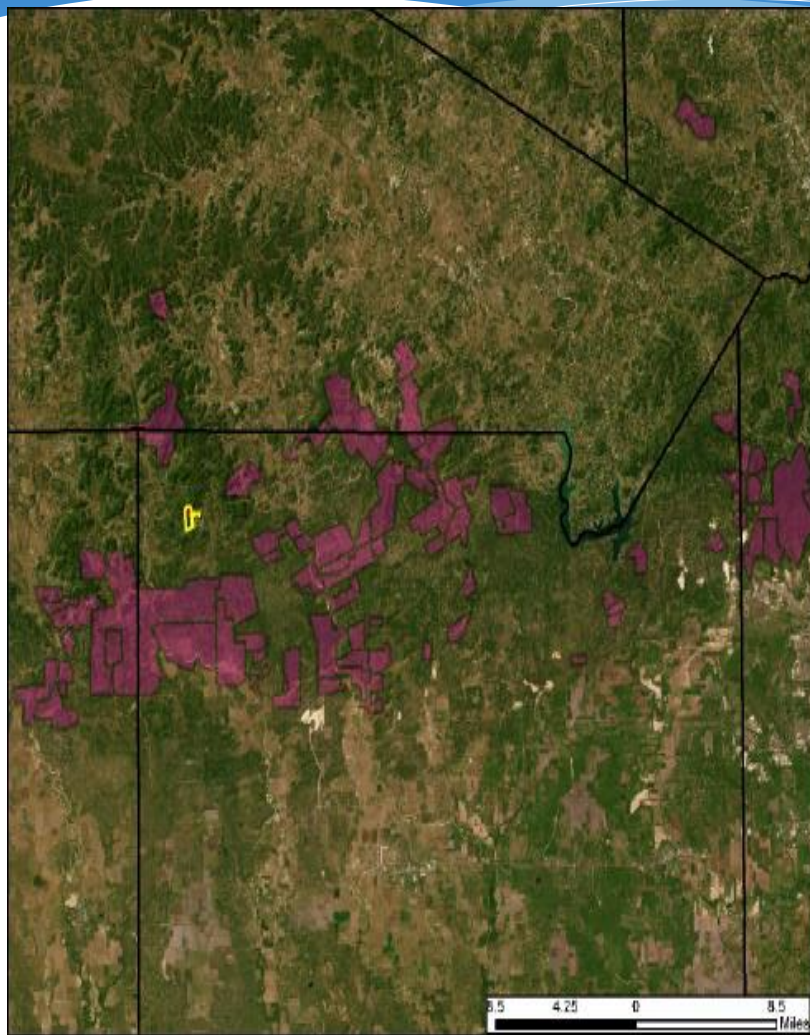
3. Discussion and update regarding the Bryant Ranch and Rocamontes Property: Green Spaces Alliance



GREEN  
SPACES  
ALLIANCE  
OF SOUTH TEXAS

Bryant Ranch  
Rocamontes Property

# Bryant Ranch (271 acres) Medina County







## Bryant Ranch (271 acres) Medina County

- ~100% EACZ
- 70% SET Model
- Located North of the Domino Ranch (2 miles), South of the Mazurek Ranch (3 miles) and West of Providence Springs Ranch (2 miles)
- EAA geological assessment reports high water quality and quantity benefits
- Appraisal completed



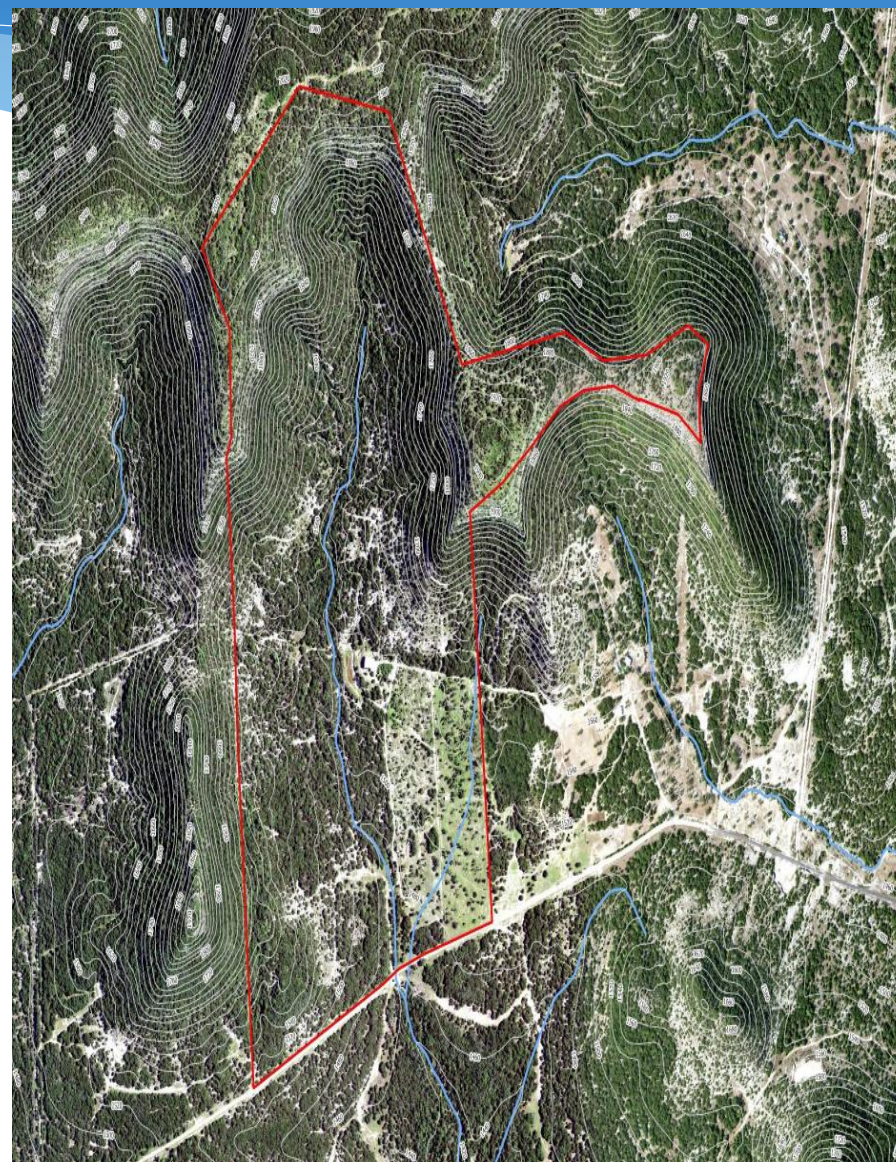
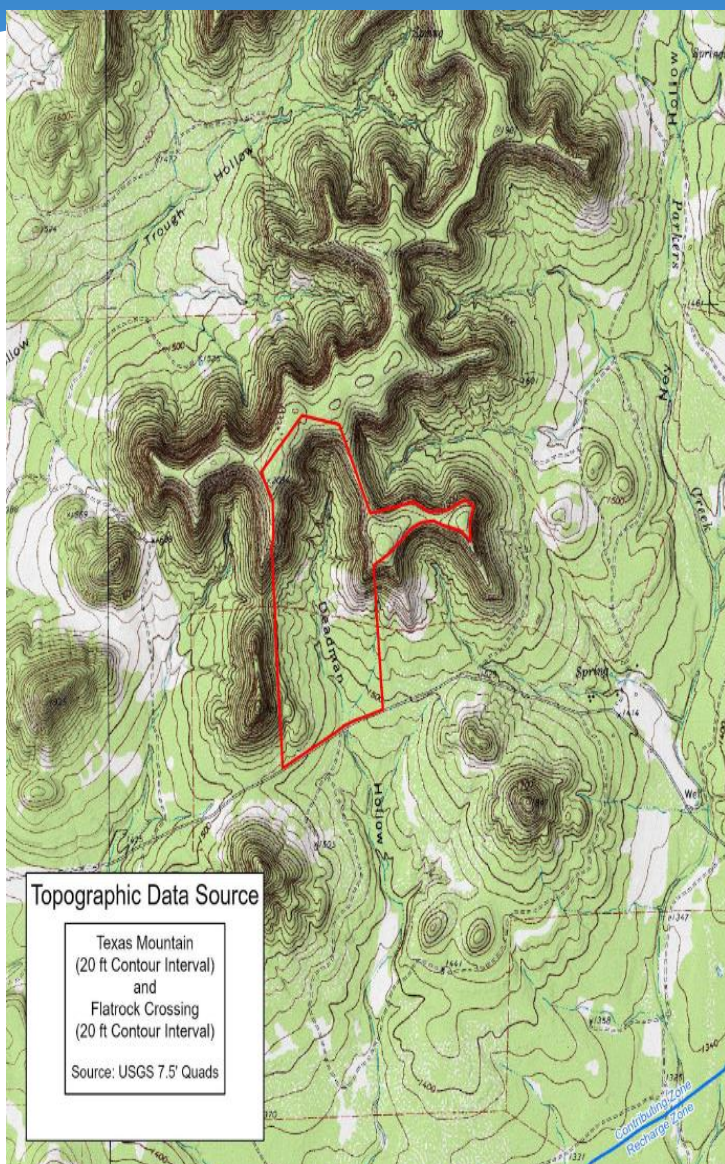
- Requesting Final Approval





GREEN  
SPACES  
ALLIANCE  
OF SOUTH TEXAS

# Bryant Ranch (271 acres) Medina County







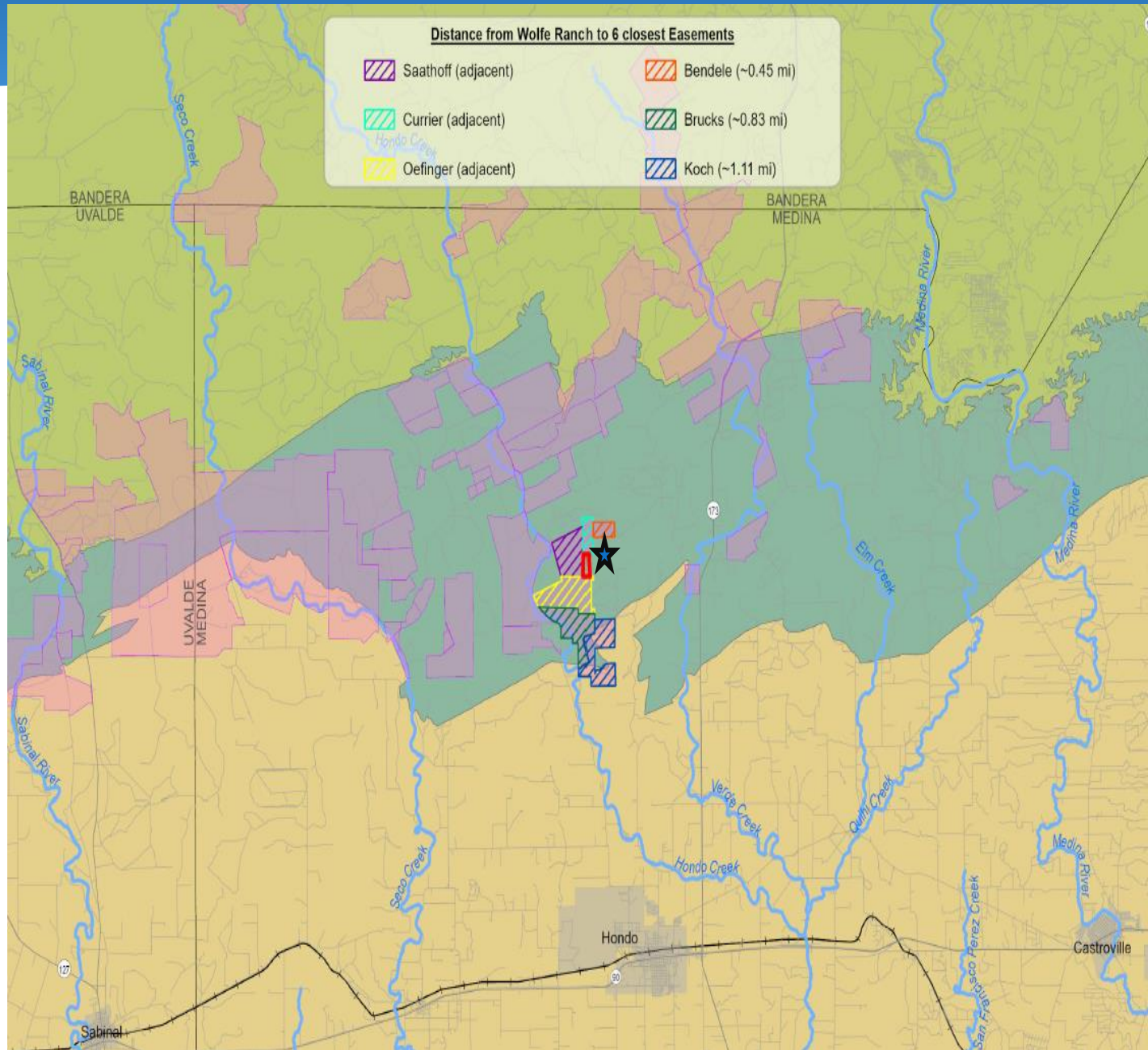
GREEN  
SPACES  
ALLIANCE  
OF SOUTH TEXAS

## Bryant Ranch (271 acres) Medina County





# Rocamontes Property (50 acres) Medina County





# Rocamontes Property (50 acres) Medina County

- ~100% EACZ
- Top 10% SET Model
- Located adjacent to Wolfe Ranch (currently under evaluation), Currier Ranch and Oefinger Ranch
- Remaining due diligence for Rocamontes and Wolfe properties could be performed simultaneously to reduce expenses
- Requesting Stage 1 Approval

