



Board of Adjustment
Notification Plan for
Case No A-23-10300271

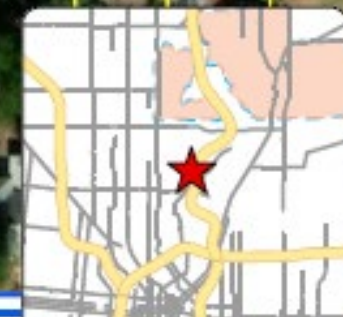


San Antonio City Limits

Subject Property

200' Notification Boundary

Council District: 1

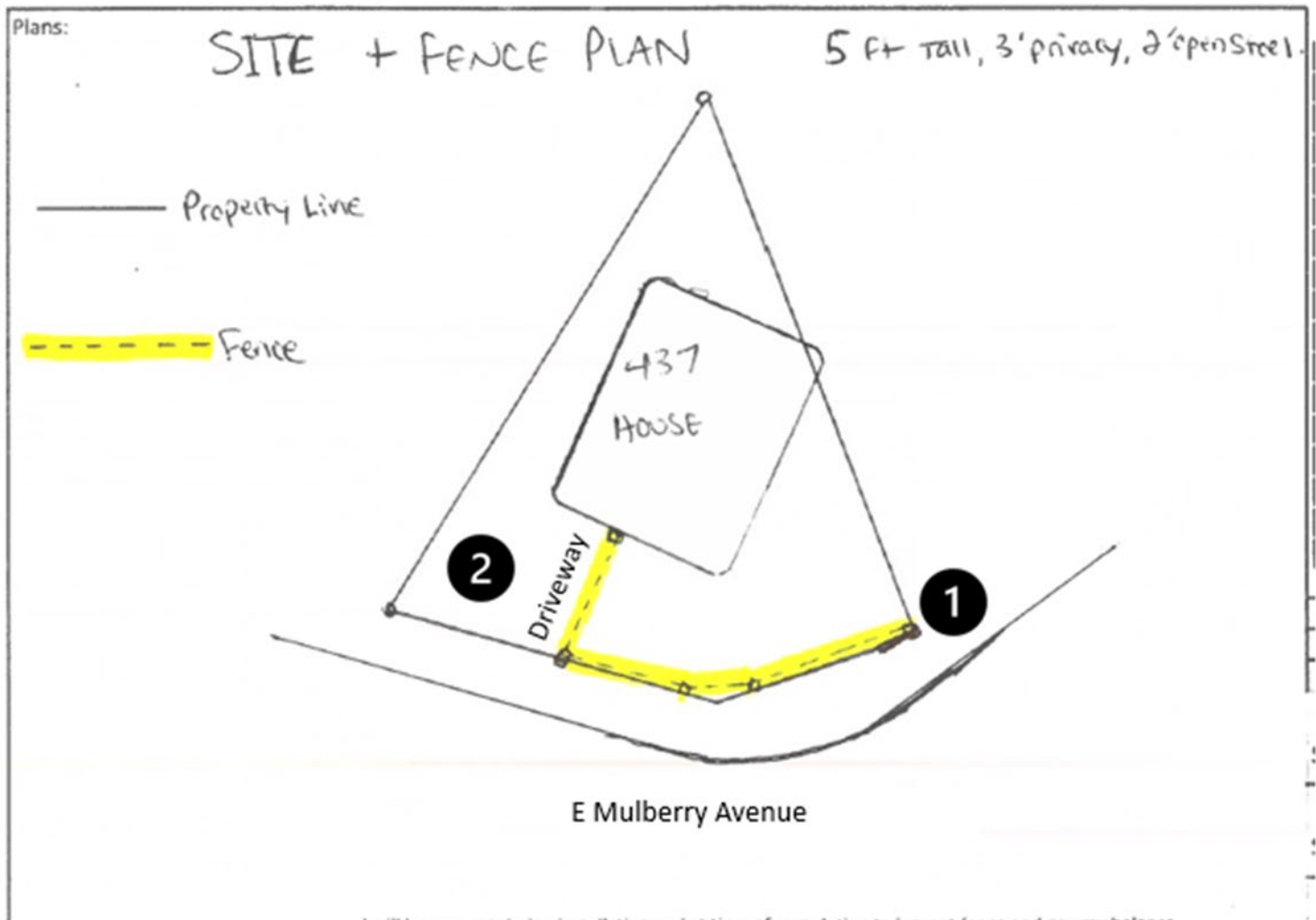


1 inch equals 100 feet

NOT TO SCALE,
FOR ILLUSTRATIVE PURPOSES ONLY

Development Services Department
City of San Antonio

Site Plan



- 1 a 16' variance from the minimum 25' corner clear vision requirement to allow a fence to have a 9' clear vision,
- 2 a 6' variance from the minimum 15' driveway clear vision requirement to allow a fence to have a 9' clear vision.

BOA-23-10300271

437 East Mulberry Avenue



Corner Clear Vision



Driveway Clear Vision



Surrounding Area



Surrounding Area

