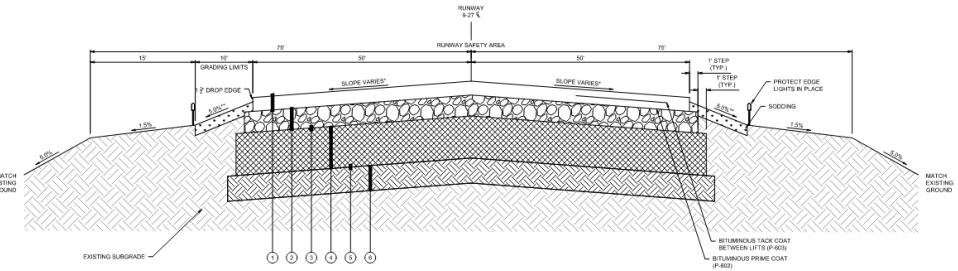
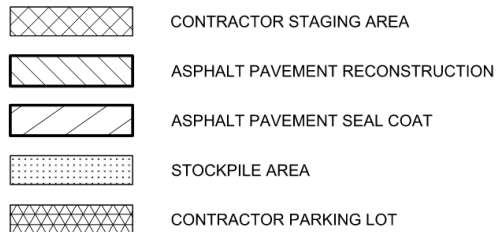
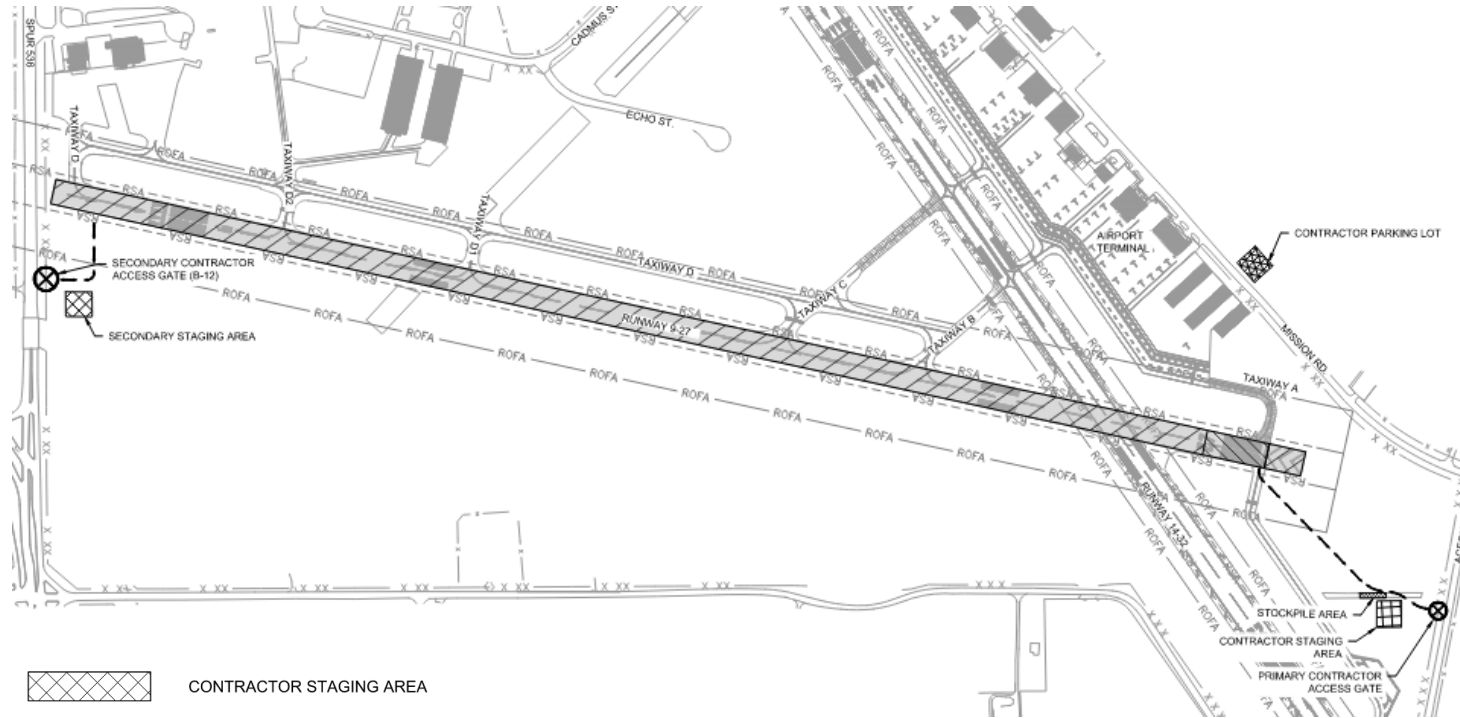


Overall Construction Plan



PROPOSED TYPICAL RUNWAY SECTION
SCALE: N.T.S.

- 1 PROPOSED 4" DEPTH BITUMINOUS ASPHALT PAVEMENT (2 - 2" LIFT) (FAA ITEM P-403)
- 2 PROPOSED 6" DEPTH CRUSHED AGGREGATE BASE COURSE (FAA ITEM P-209)
- 3 GEOGRID (TENSAR TX-5 OR APPROVED EQUAL)
- 4 18" REMOVE AND REPLACE WITH SELECT FILL***
- 5 GEOGRID (TENSAR TX-5 OR APPROVED EQUAL)
- 6 PROPOSED 8" DEPTH LIME TREATED SUBGRADE (95% MODIFIED PROCTOR DENSITY) (FAA ITEM P-155)

*** - SELECT FILL SHALL MEET THE REQUIREMENTS OF FAA ITEM P-209 AND BE COMPACTED IN MAXIMUM 6" LOOSE LIFTS TO 95% MAXIMUM MODIFIED PROCTOR DENSITY

Construction Work Area

