



Board of Adjustment
Notification Plan for
Case No A-23-10300231



San Antonio City Limits



Subject Property



200' Notification Boundary



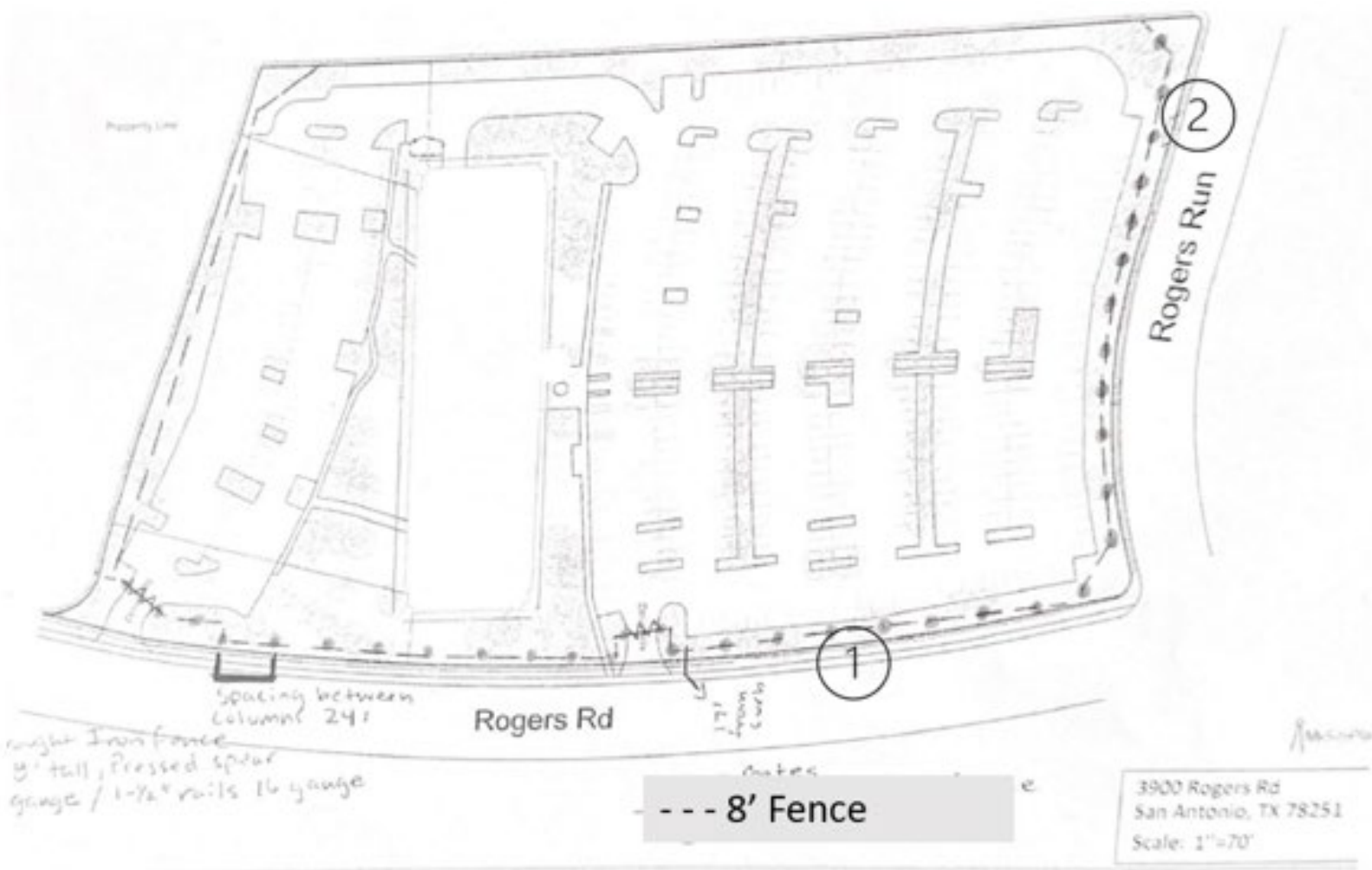
Council District: 6



1 inch equals 100 feet

"NOT TO SCALE,
 FOR ILLUSTRATIVE PURPOSES ONLY"

Development Services Department
 City of San Antonio



- ① a 3' special exception from the maximum 5' front yard fence height to allow an 8' predominately open fence in the front yard,
- ② a 2' special exception from the maximum 6' fence height to allow an 8' predominately open fence in the side and rear yard.

BOA-23-10300231

3900 Rogers Road



View Looking Southeast
(Rogers Road on the Left)



View Looking Northeast (Rogers Run
Seen on the Right)



View Looking Northwest (Rogers
Road Seen on the Left)



Surrounding Area



Surrounding Area

