



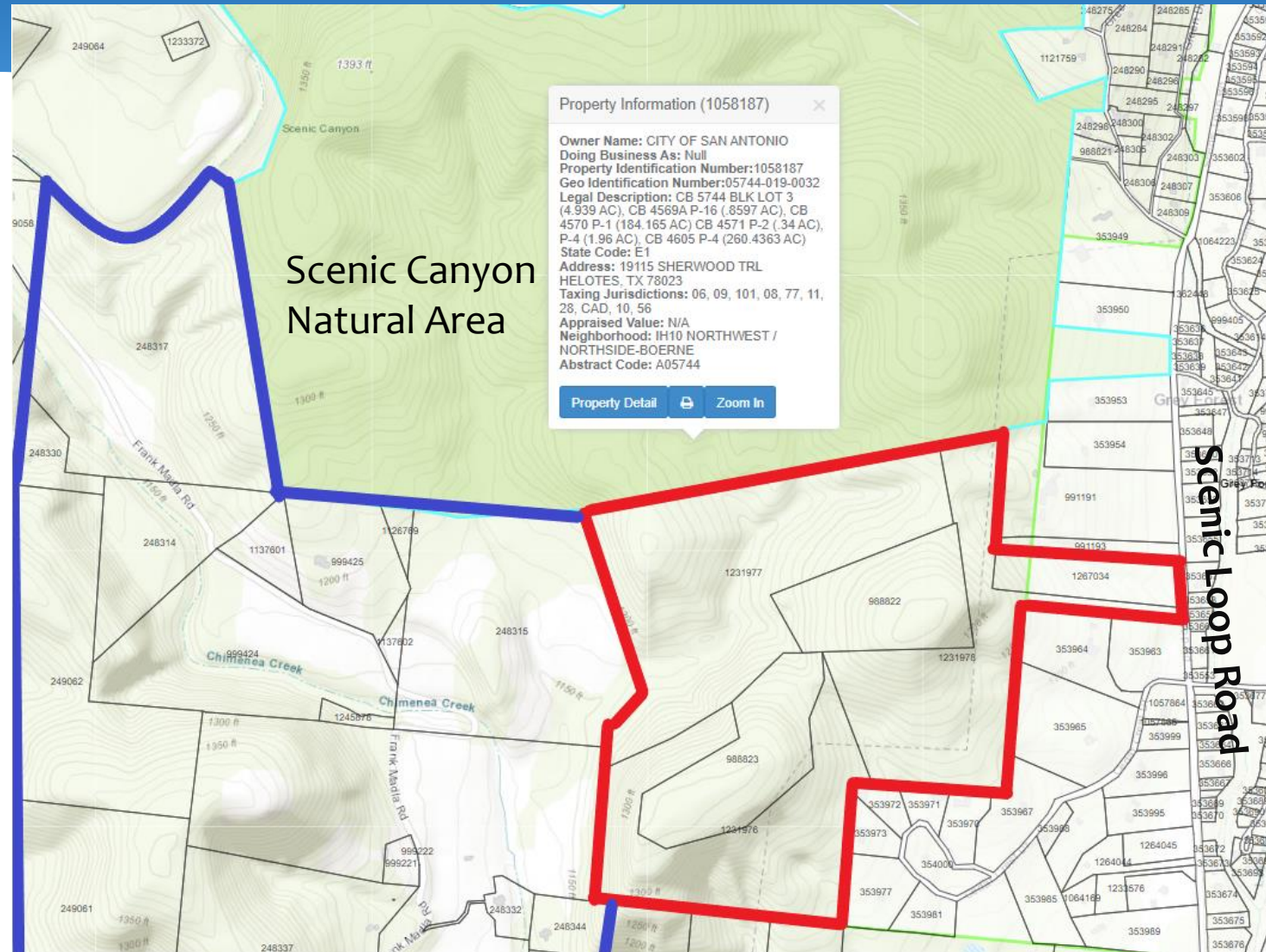
PARKS & RECREATION

Scenic Loop Property
S.A. MUD No. 1 Phase II



PARKS & RECREATION

Scenic Loop Property (155.7 Acres) Bexar County





PARKS & RECREATION

Scenic Loop Property (155.7 Acres) Bexar County

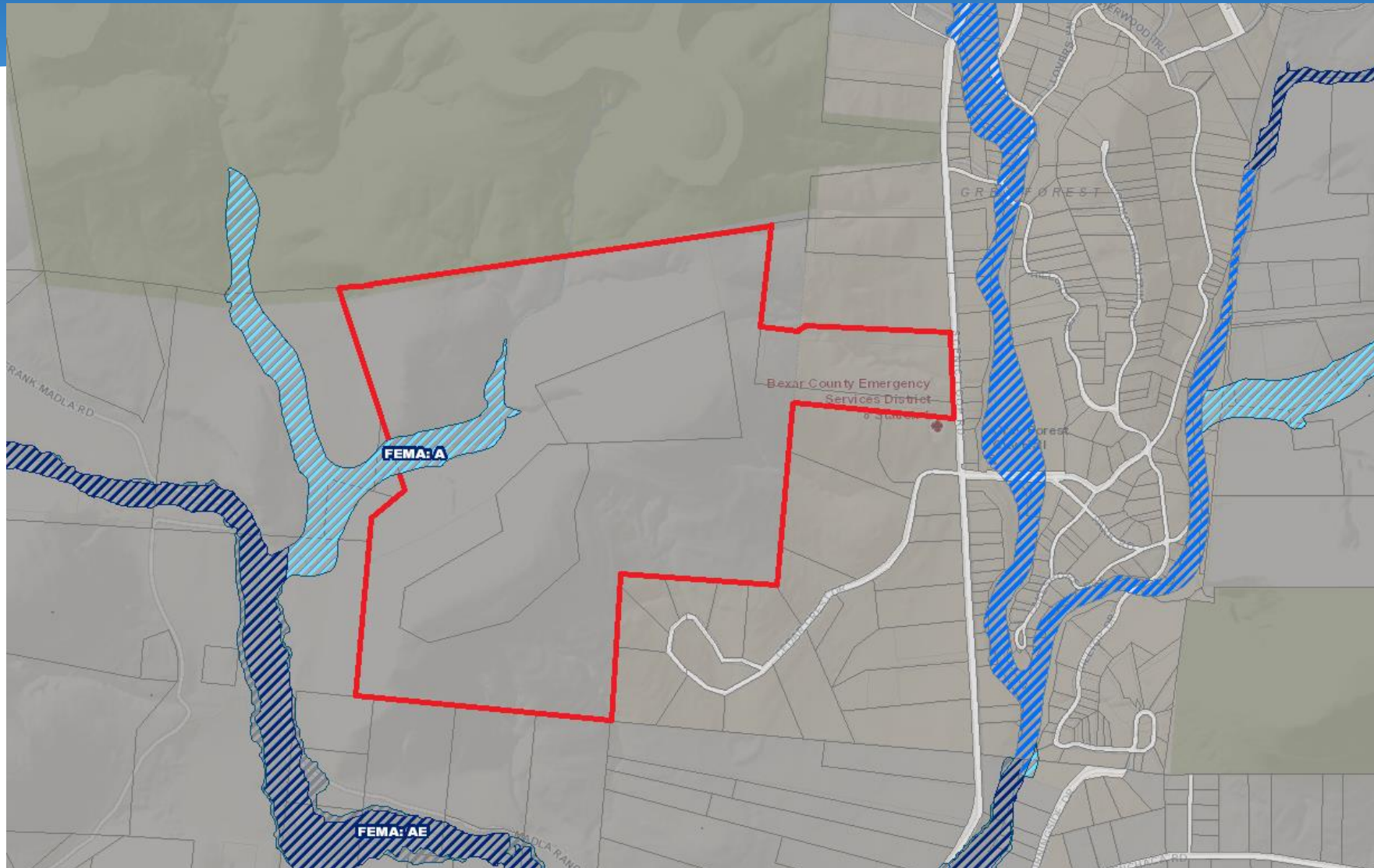
- Six parcels totaling +/- 155 acres in Contributing Zone for fee simple acquisition
- Located adjacent to 453-acre Scenic Canyon Natural Area
- Ranks in Top 10% of SET Model
- Located within Camp Bullis Sentinel Landscape boundary; potential candidate for partnership with Compatible Lands Foundation and leverage funding with REPI Challenge funding
- EAA Geological Assessment reports high water quality and quantity; Appraisal completed
- *Requesting Stage 2 Consideration*





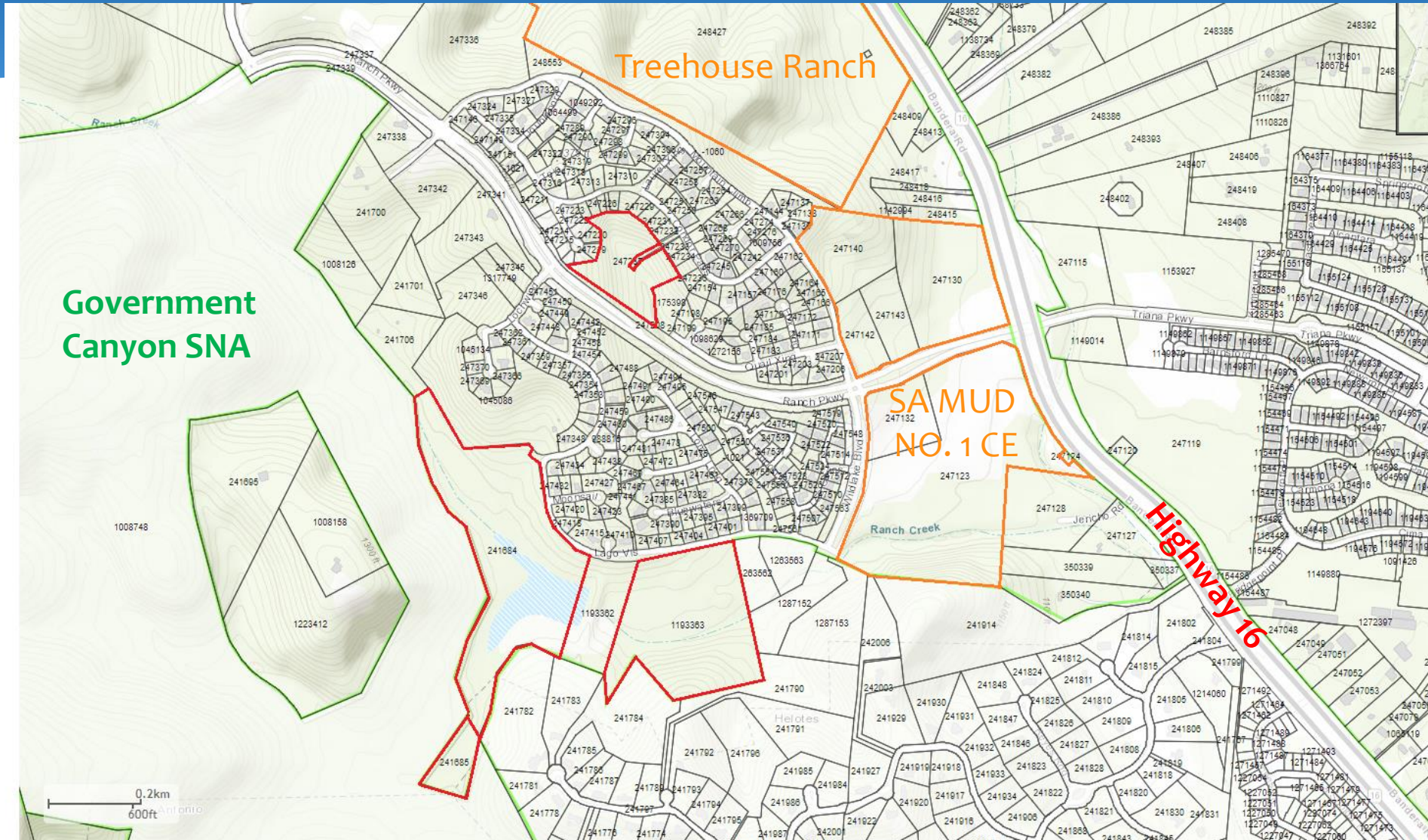
PARKS & RECREATION

Scenic Loop Property (155.7 Acres) Bexar County





SA MUD No. 1 Phase II (~55 Acres) Bexar County



SA MUD No. 1 Phase II (~55 Acres) Bexar County

- Four parcels totaling +/- 55 acres in Recharge and Contributing Zones
- Owned by San Antonio Municipal Utility District No. 1; Located in San Antonio Ranch development
- Located adjacent to TPWD/Government Canyon State Natural Area and near 67-acre SA MUD No.1 CE
- EAA geological assessment report ranked moderate for water quality and quantity benefits
- SA MUD No.1 seeking to donate CE on these properties
 - Significant cost savings to EAPP; due diligence and closing costs only
- Requesting Stage 2 consideration





CITY OF SAN ANTONIO
EDWARDS AQUIFER
PROTECTION PROGRAM

SA MUD No. 1 Phase II (~55 Acres) Bexar County

