

**Board of Adjustment**  
**Notification Plan for**  
**Case No A-23-10300218**

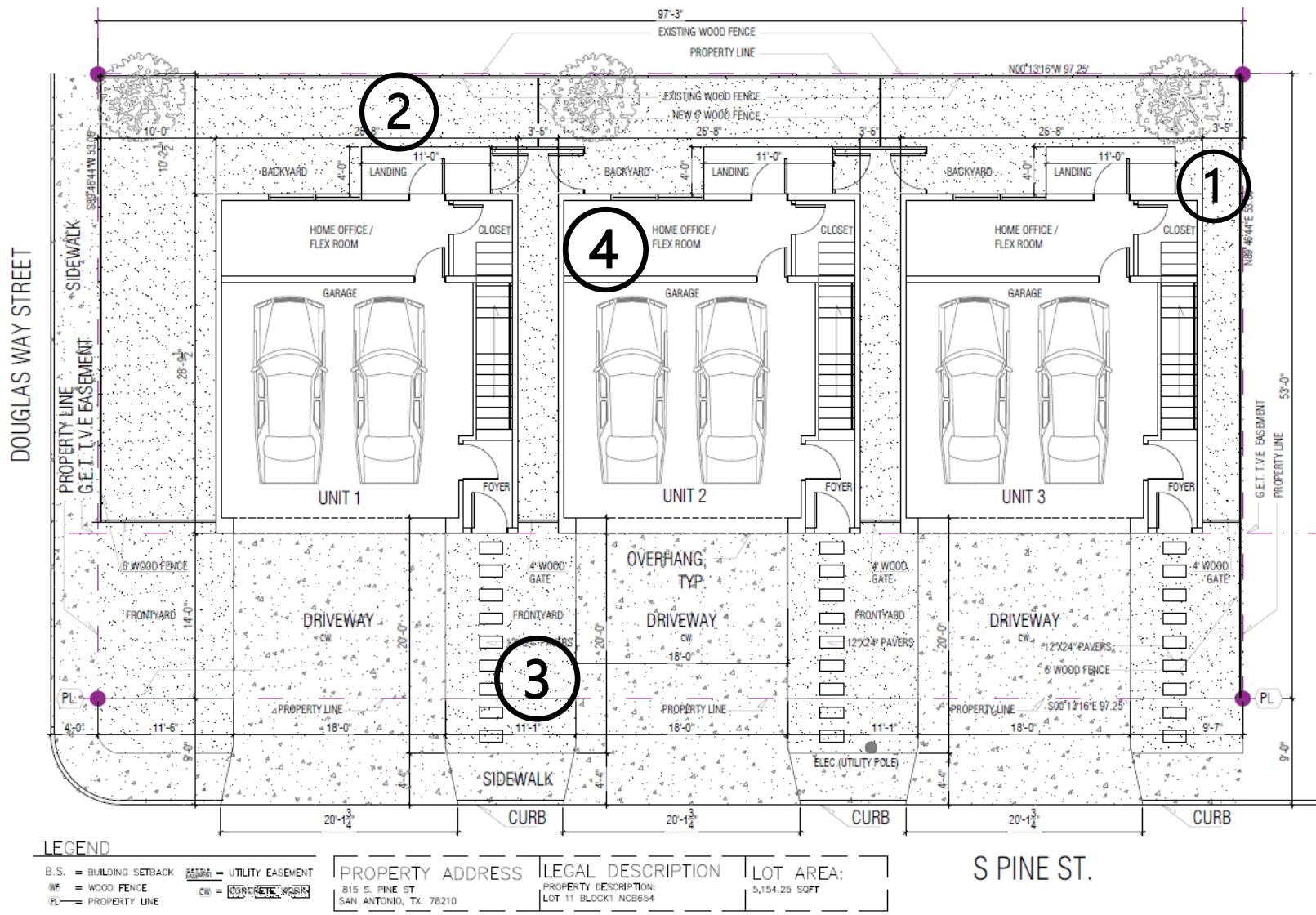


- San Antonio City Limits
- Subject Property
- 200' Notification Boundary
- Council District: 2



1 inch equals 100 feet  
"NOT TO SCALE,  
FOR ILLUSTRATIVE PURPOSES ONLY"  
Development Services Department  
City of San Antonio





- 1 A 1'-7" variance from the minimum 5' side setback to allow a structure to be 3'-5" from the side property line

### Variances that apply to all units:

- 2 A variance to allow three separate structures on an "RM-4" lot that is less than one-third of an acre
- 3 A variance to exceed the maximum 50% impervious cover
- 4 A half story variance from the maximum 2.5 stories to allow a building with 3 stories

**BOA-23-10300218**

815 South Pine Street



Surrounding Area





## Surrounding Area

