

San Antonio City Limits

Subject Property

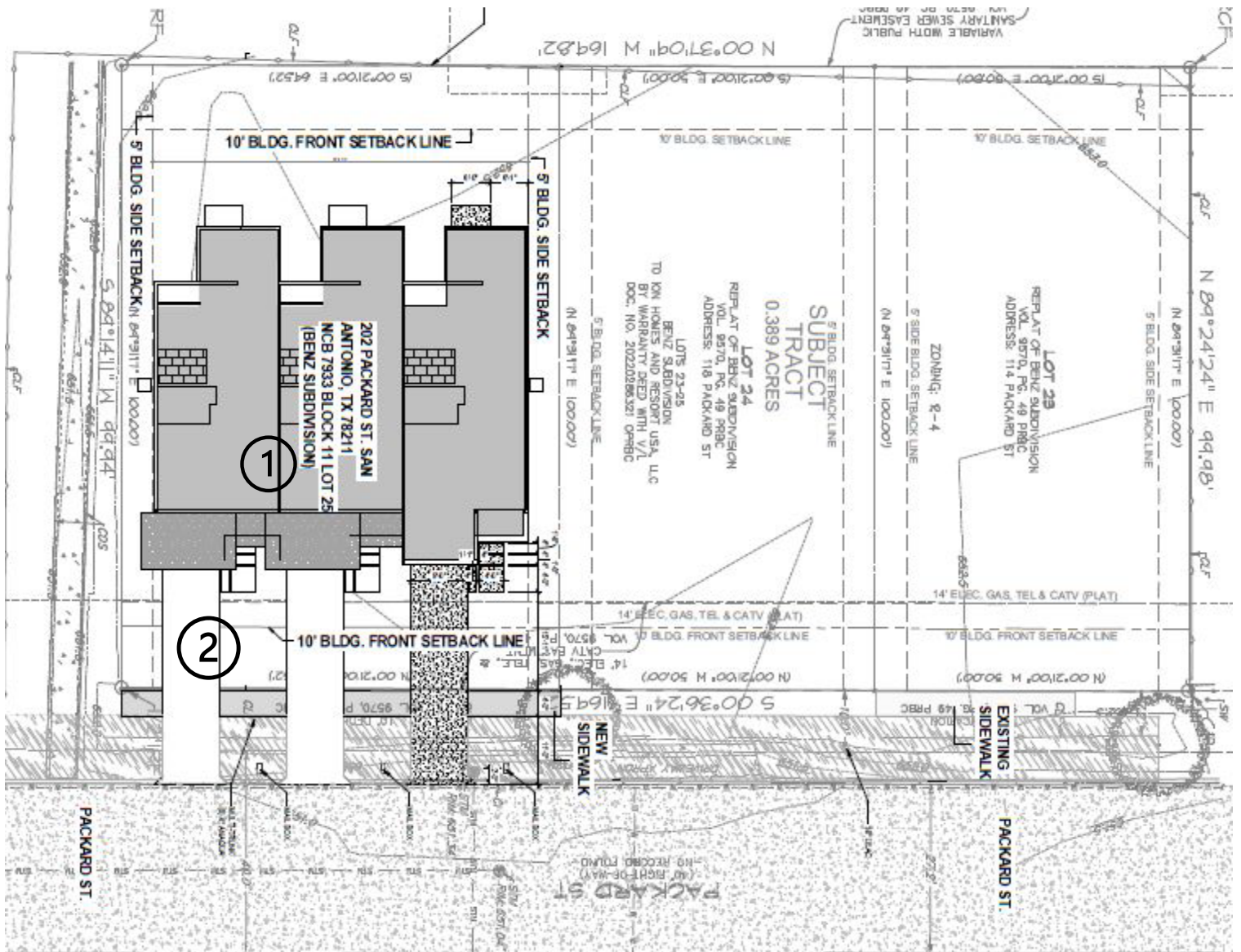
200' Notification Boundary

Council District: 5

"NOT TO SCALE,  
FOR ILLUSTRATIVE PURPOSES ONLY"

Development Services Department  
City of San Antonio





- ① A 975 square foot variance from the maximum 4530 square feet lot coverage to allow 5505 square feet development on a "RM-5" with over 65% lot coverage
- ② A variance from the maximum 50% impervious cover requirement to allow the front yard to exceed the maximum 50% impervious cover

**BOA-23-10300211**

202 Packard Street



Street View of site





Surrounding Area



Surrounding Area

