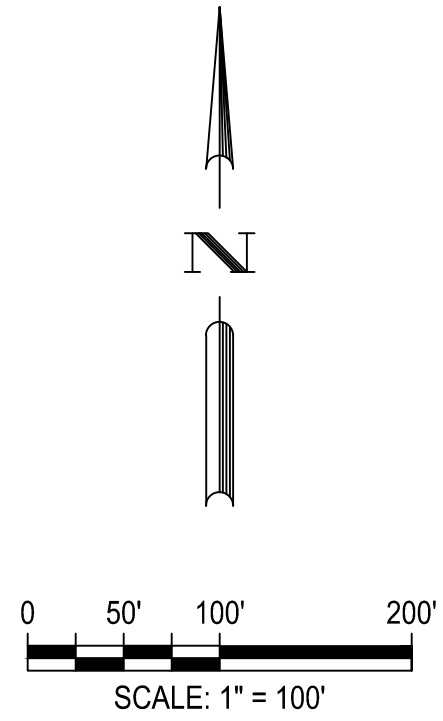
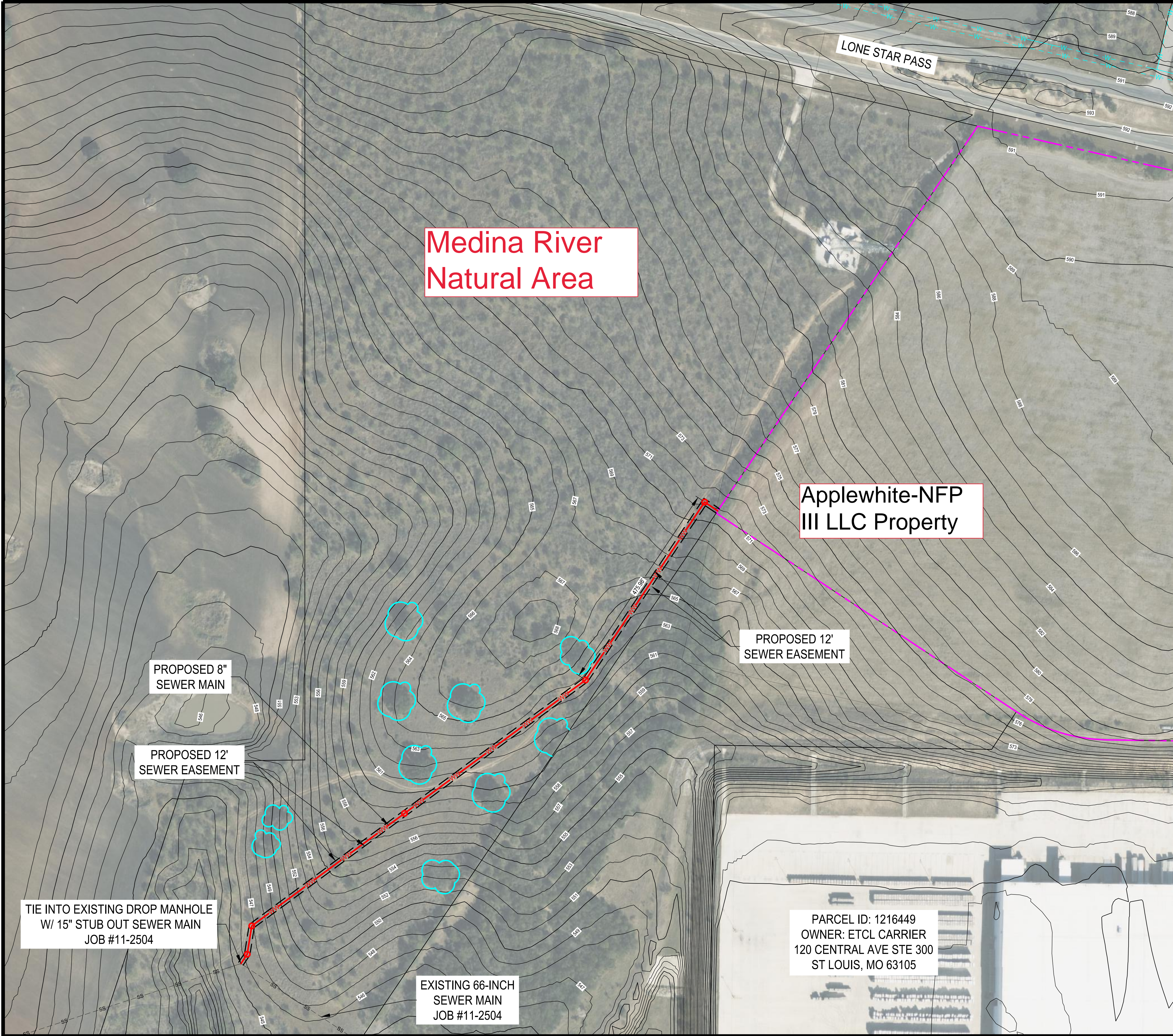


G:\TXC\Projects\San Antonio Projects\9902-00 - Applewhite Industrial\03_CADD\04_ Exhibits\Avoid Trees WW Route.dwg Layout: SEWER CONNECTION PLAN ZOOMED OUT Plotted: 7/31/2023 9:35:08 AM By: jclifton



OWNER/DEVELOPER: APPLEWHITE - NFP III LLC
940 CORBINDALE RD
HOUSTON, TX 77024

ENGINEER: BGE, INC., TBPE-1046
7330 SAN PEDRO AVE, SUITE 202
SAN ANTONIO, TX 78116
(210) 581-3600

- PROPERTY BOUNDARY
- EXISTING SEWER MAIN
- PROPOSED SEWER MAIN
- EXISTING 5' CONTOUR
- EXISTING 1' CONTOUR
- PROP EASEMENT
- EXISTING TREE TO BE AVOIDED

Offsite Sewer	
8" Sewer Main	1509 LF
Manhole	4 EA

DATE	REV	DESCRIPTION
APR		

DESIGNED BY: DLW

REVIEWED BY: OR

DRAWN BY: DLW

BGE

BROWN & GAY ENGINEERS, INC.
7330 San Pedro, Suite 202
San Antonio, TX 78216
TEL: (210) 581-3600 www.bgeinc.com
TBPE Registration No. F-1046

APPLEWHITE INDUSTRIAL
SEWER CONNECTION PLAN
(ZOOMED OUT)

EXHIBIT 1.1