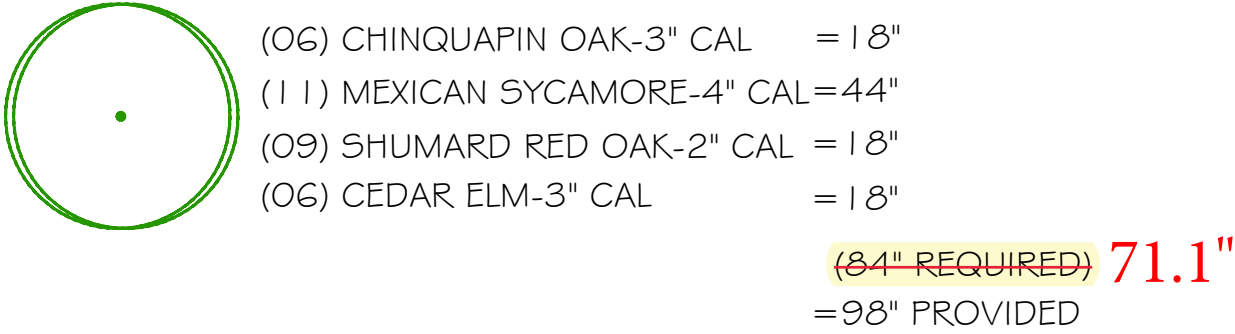
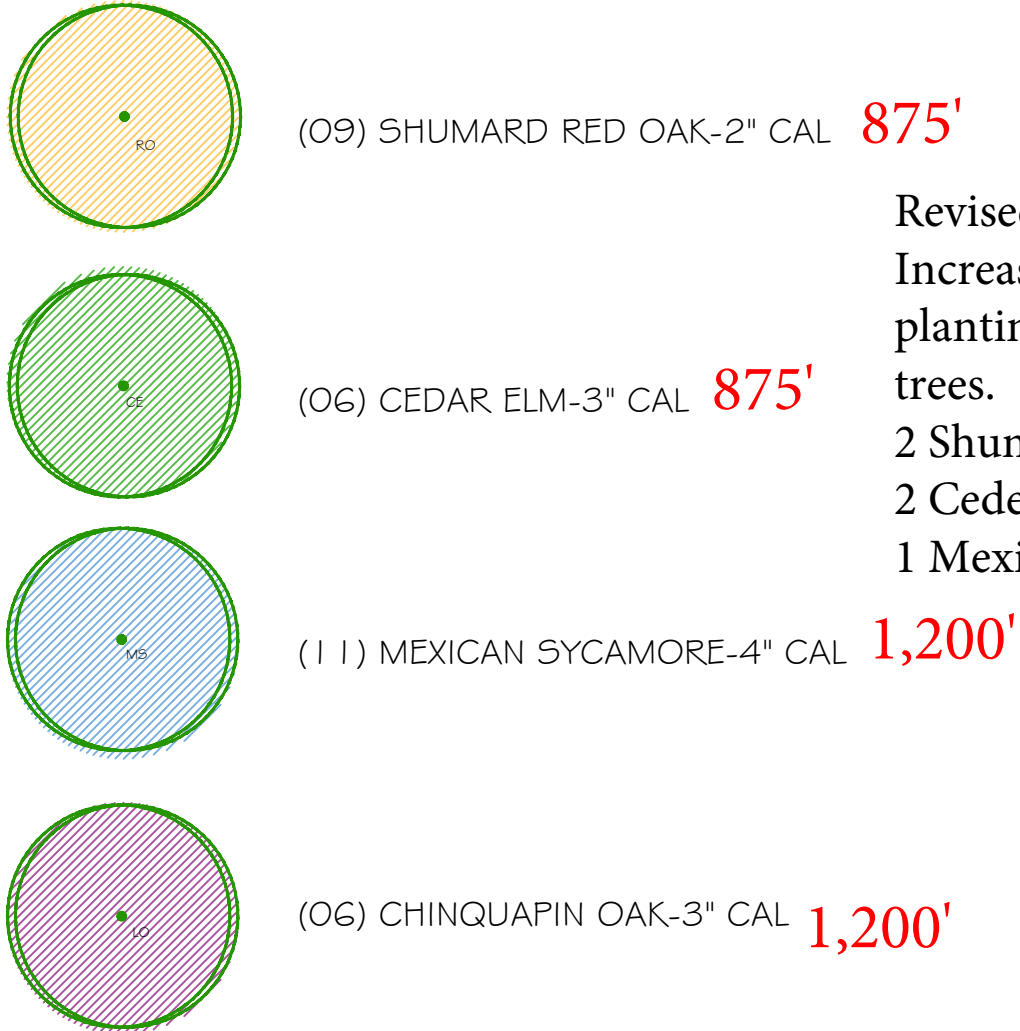


TREE LEGEND



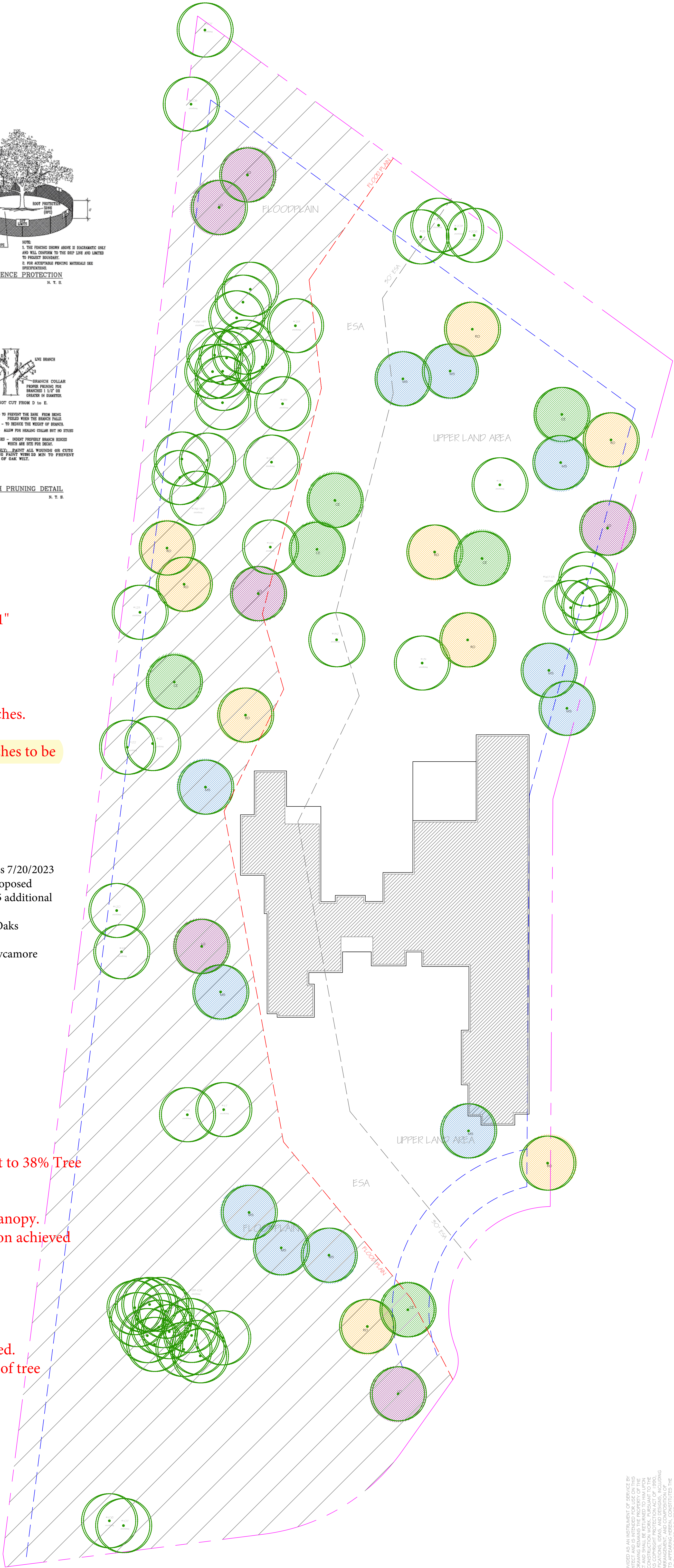
122" x 80% = 97.6" total required preservation.  
26.5" total inches preserved.  
95.5" total inches removed.  
97.6" - 26.5" = 71.1" total required mitigation inches.  
98" total inches to be planted back.  
98" - 71.1" = 26.9" total additional mitigation inches to be planted back above the minimum 80%.  
(32) Trees total.



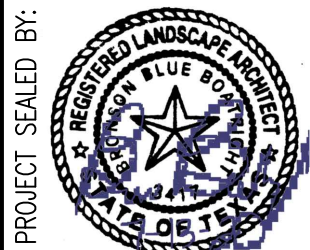
Tree Canopy -  
2,577 total acre site = 112,254.1' sf  
40,833' total Floodplain limits.  
112,254.1' - 40,833' = 71,421.1'.  
71,421.1' total applicable project limits subject to 38% Tree Canopy.

71,421.1' x 38% = 27,140' total required tree canopy.  
(32) total trees to be planted for ESA mitigation achieved  
31,050' total tree canopy.  
33,250' total preserved tree canopy.  
(ESA and Upland) (Excluding Floodplain)

64,300' total combined tree canopy.  
64,300' / 71,421.1' = 90% Tree Canopy achieved.  
64,300' - 27,140' = 37,160' total additional SF of tree canopy planted & preserved.



THIS DRAWING IS PROVIDED AS AN INSTRUMENT OF SERVICE BY BRONSON BLUE ARCHITECTURE, INC. FOR THE PROJECT ONLY. THE DRAWING REMAINS THE PROPERTY OF THE PROJECT OWNER AND IS NOT TO BE REPRODUCED, COPIED, OR USED FOR ANY OTHER PROJECT WITHOUT THE WRITTEN CONSENT OF BRONSON BLUE ARCHITECTURE, INC. THE COMPLETION OF THE CONSTRUCTION WORK, PURSUANT TO THE ARCHITECTURAL WORKS COPYRIGHT PROTECTION ACT OF 1990, IS THE EXCLUSIVE PROPERTY OF BRONSON BLUE ARCHITECTURE, INC. THE OVERALL FORM, ARRANGEMENT, AND COMPOSITION OF THIS DRAWING ARE THE PROPERTY OF BRONSON BLUE ARCHITECTURE, INC. ANY REPRODUCTION, USE, OR DISCLOSURE OF INFORMATION CONTAINED HEREIN WITHOUT THE WRITTEN CONSENT OF BRONSON BLUE ARCHITECTURE, INC. IS STRICTLY PROHIBITED.



NO.	REVISION
1	CONCEPT
2	POOL/PLANTING
3	
4	

DATE	BY
8-25-22	BBB
9-5-22	BBB
	BBB
	BBB

INSTALLATION CONTRACTOR:
ALEX GUTIERREZ

PROJECT LOCATION:
18 Bishops Green (The Dominion) San Antonio, TX

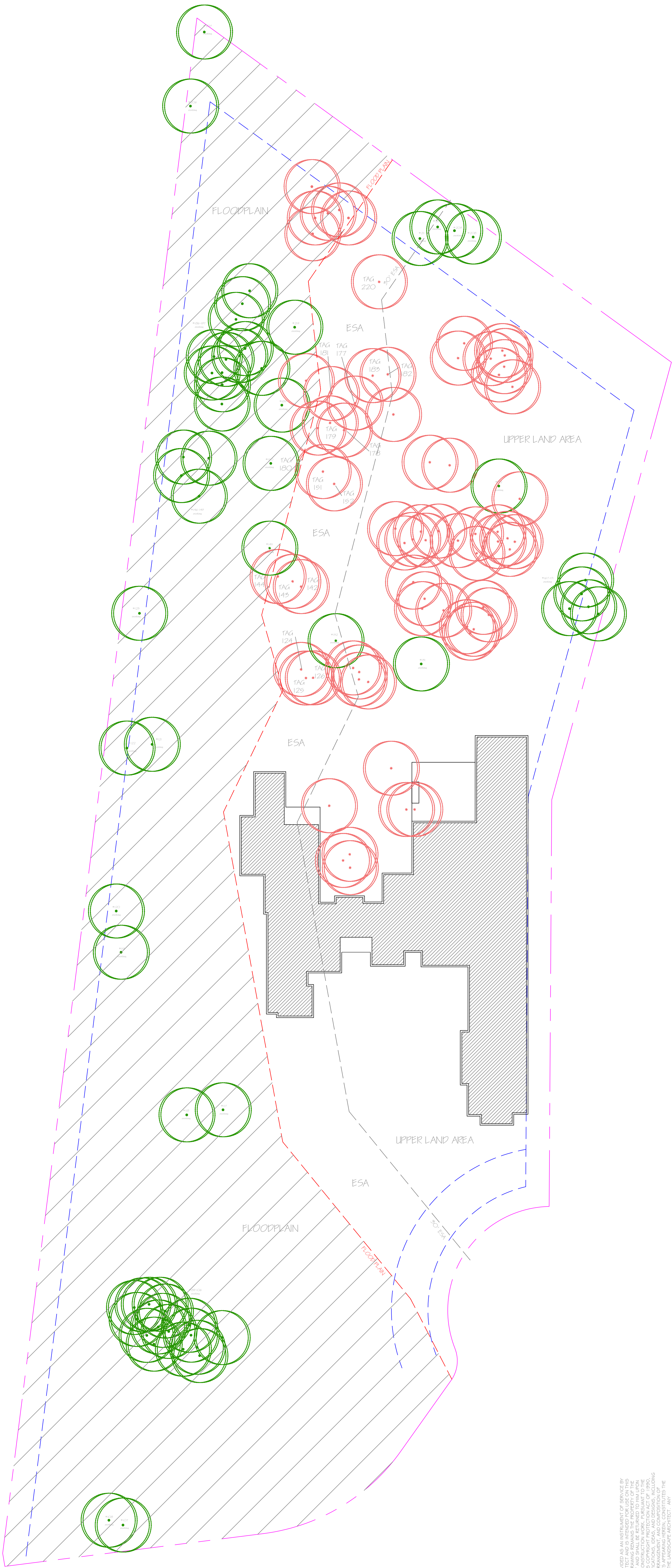
SCALE 1:20
0' 10' 20'

FINAL TP PLAN
---------------



ESA REMOVED/PRESERVED LEGEND

TAG	SPECIES	INCHES	ACTION
124	OAK	6	REMOVED
125	OAK	7	REMOVED
126	OAK	6	REMOVED
132	OAK	13.5 DBL TRUNK	PRESERVED
142	OAK	7	REMOVED
143	OAK	6.5	REMOVED
144	OAK	7	REMOVED
151	OAK	6	REMOVED
152	OAK	6	REMOVED
177	OAK	6	REMOVED
178	OAK	7	REMOVED
179	OAK	6	REMOVED
180	OAK	7	REMOVED
182	OAK	6	REMOVED
183	OAK	6	REMOVED
211	OAK	13	PRESERVED
220	OAK	6	REMOVED
		PRESERVED	26.5"
		REMOVED	95.5



THIS DRAWING IS PROVIDED AS AN INSTRUMENT OF SERVICE BY THE LANDSCAPE ARCHITECT AND IS INTENDED FOR USE ON THIS PROJECT ONLY. THE DRAWING REMAINS THE PROPERTY OF THE LANDSCAPE ARCHITECT AND SHALL BE RETURNED TO HIM UPON COMPLETION OF THE CONSTRUCTION WORK. PURSUANT TO THE ARCHITECTURAL WORKS COPYRIGHT PROTECTION ACT OF 1980, ALL DRAWINGS, SPECIFICATIONS, IDEAS, AND DESIGNS, INCLUDING THE OVERALL FORM, ARRANGEMENT, AND COMPOSITION OF THE SPACES, AND ELEMENTS APPEARING HEREIN, CONSTITUTE THE ORIGINAL WORK OF THE LANDSCAPE ARCHITECT. ANY REPRODUCTION, USE, OR DISCLOSURE OF INFORMATION CONTAINED HEREIN WITHOUT PRIOR WRITTEN CONSENT OF THE LANDSCAPE ARCHITECT IS STRICTLY PROHIBITED.

**BRONSON** landscape  
**BLUE** architecture

NO.	REVISION	DATE	BY
1	CONCEPT	8-25-22	BBB
2	POOL/PLANTING	9-5-22	BBB
3			BBB
4			BBB
(cell) 325.212.9486 (address) 8546 Broadway, suite 140 (email) info@bronsontable.com			

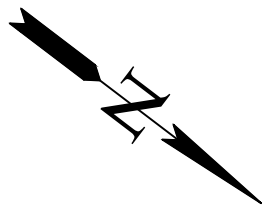
**INSTALLATION CONTRACTOR:**

ALEX GUTIERREZ

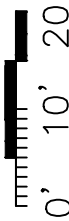
(cell) 214.850.7335

**PROJECT LOCATION:**

18 Bishops Green  
(The Dominion)  
San Antonio, TX



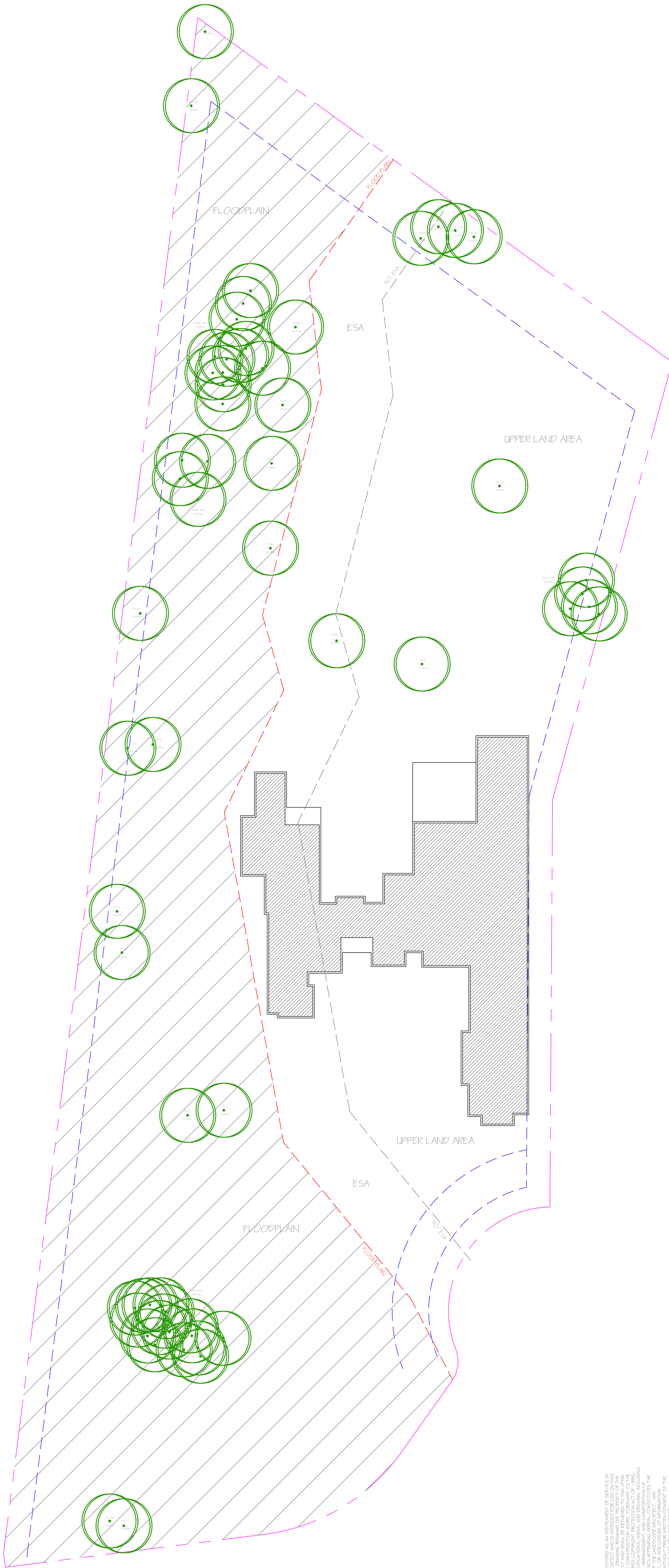
SCALE 1:20



ESA REMOVAL PLAN



### SITE PLAN AFTER TREES REMOVED



THIS DRAWING IS PROVIDED AS AN INSTRUMENT OF SERVICE BY THE LANDSCAPE ARCHITECT AND IS INTENDED FOR USE ON THIS PROJECT ONLY. THE DRAWING REMAINS THE PROPERTY OF THE LANDSCAPE ARCHITECT AND SHALL BE RETURNED TO HIM UPON COMPLETION OF THE CONSTRUCTION WORK, PUEBBLANT TO THE ARCHITECTURAL WORKS COPYRIGHT PROTECTION ACT OF 1990, ALL DRAWINGS, SPECIFICATIONS, IDEAS, AND DESIGNS, INCLUDING THE OVERALL FORM, ARRANGEMENT, AND COMPOSITION OF SPACES, AND ELEMENTS APPEARING HEREIN, CONSTITUTES THE COPYRIGHT WORK OF THE LANDSCAPE ARCHITECT. ANY REPRODUCTION, USE, OR DISCLOSURE OF INFORMATION CONTAINED HEREIN, WITHOUT PRIOR WRITTEN CONSENT OF THE

**BRONSON** landscape  
**BLUE** architecture

NO.	REVISION	DATE	BY
1	CONCEPT	8-25-22	BBB
2	POOL/PLANTING	9-5-22	BBB
3			BBB
4			BBB
(cell) 325.212.9486 (address) 8546 Broadway, suite 140		(email) info@personalline.com	

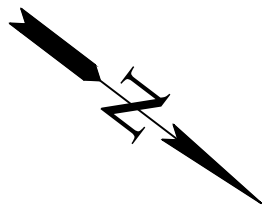
**INSTALLATION CONTRACTOR:**

ALEX GUTIERREZ

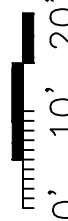
214.850.7335 (cell)

**PROJECT LOCATION:**

18 Bishops Green  
(The Dominion)  
San Antonio, TX



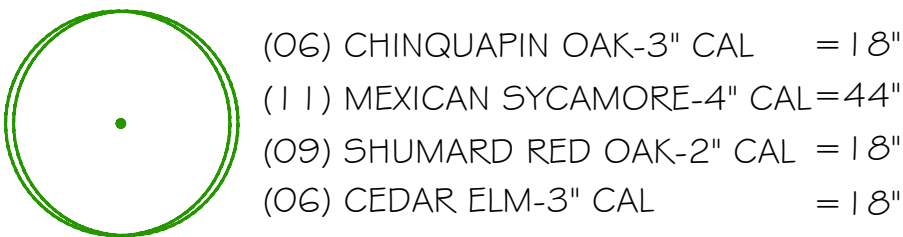
SCALE 1:20



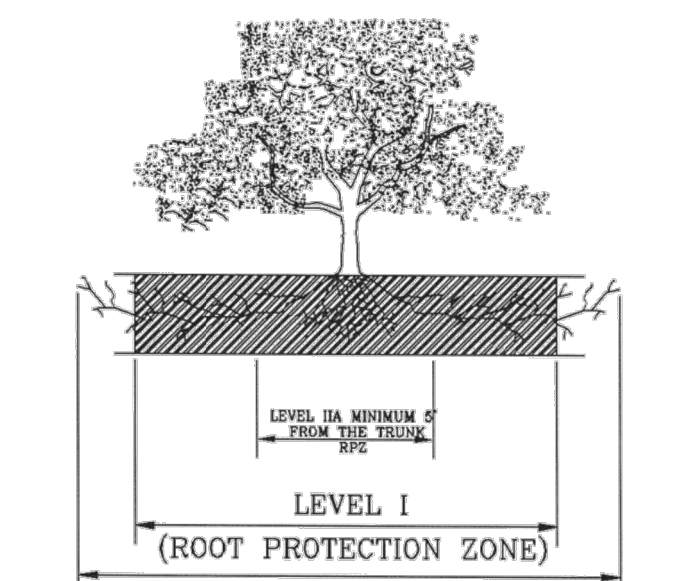
TREES PRESERVED



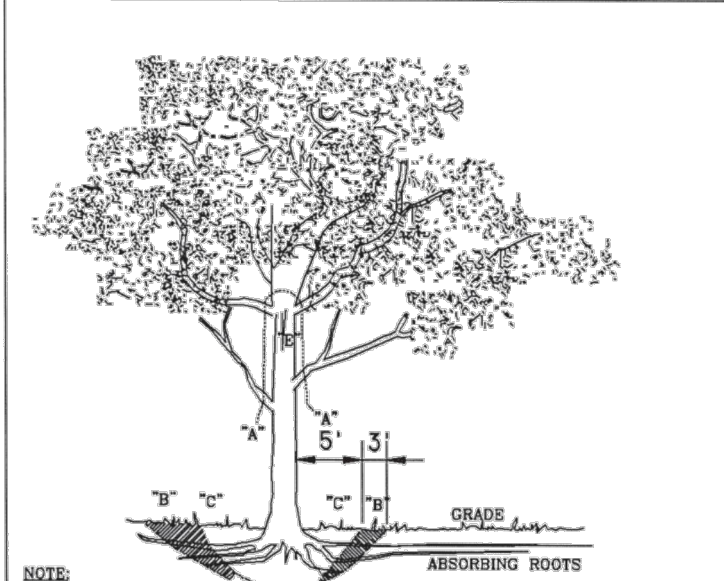
## TREE LEGEND



(71.1" REQUIRED)  
= 98" PROVIDED



**1.1.1 ELEVATION**  
N. T. S.



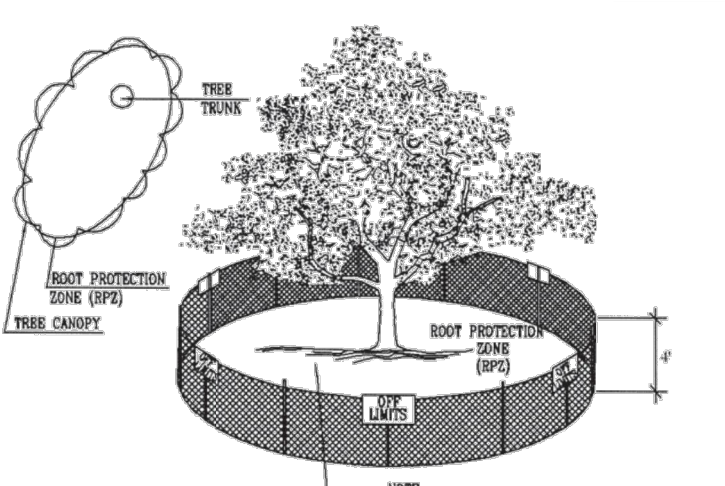
"A" REMOVE BULKY TREE PARTS "SHRED" AND/OR HAUL SEPARATELY.

"B" BEGIN EXCAVATION APPROX. 8' FROM THE TRUNK - CUT THRU ANCHOR ROOTS AT AN ANGLE - 3' TO 4' DEEP

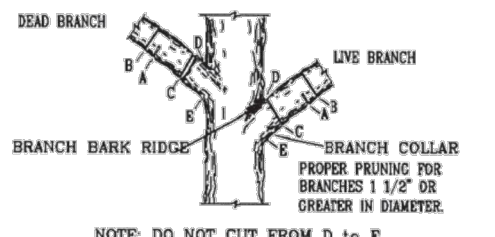
"C" USING TREE TRUNK AS A LEVER PUSH AT POINT "E" TO REMOVE TREE BOLE AND LARGE FREDER ROOTS (4" TO 10" IN DIAM.)

"D" BACKFILL HOLE AND CLEAN UP.

1.3 TREE REMOVAL DIAGRAM



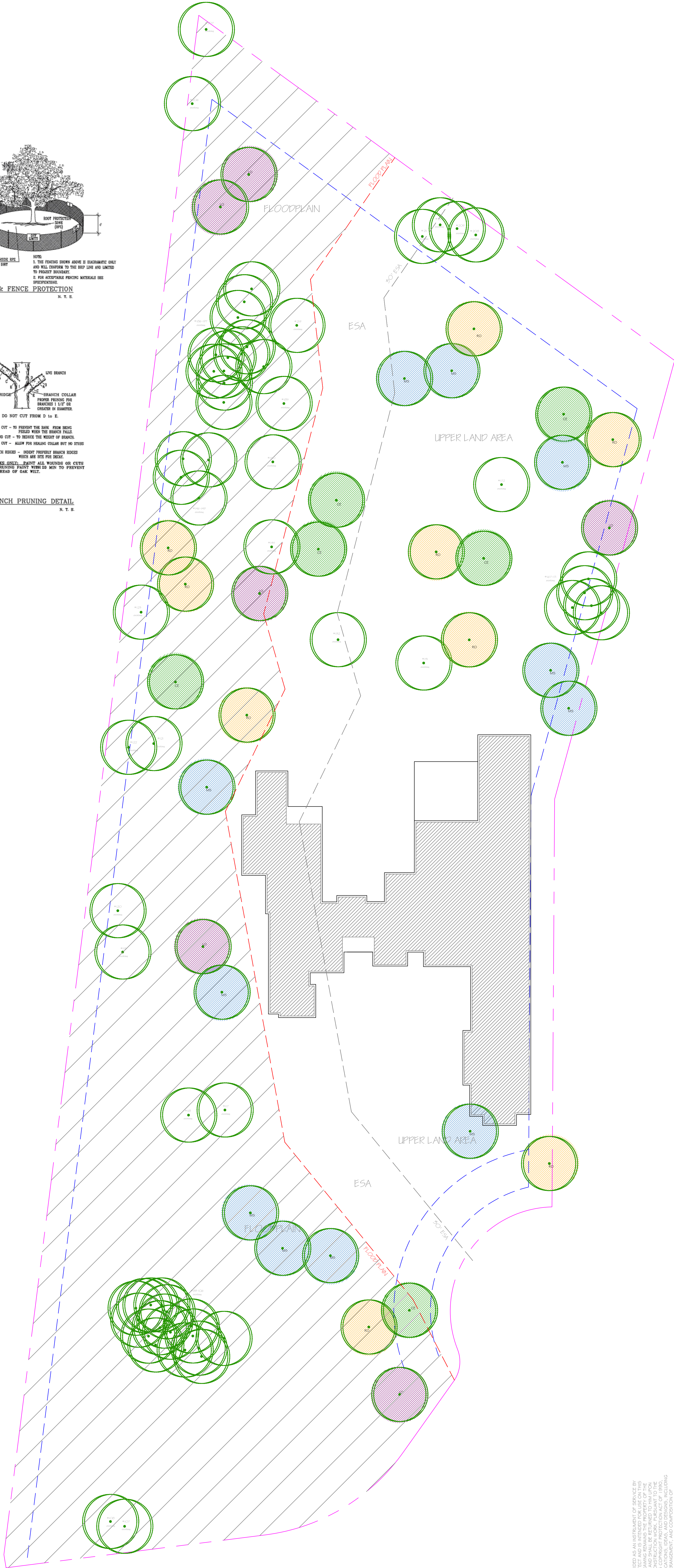
3" MULCH INSIDE RPS  
WHEN BARE ERT



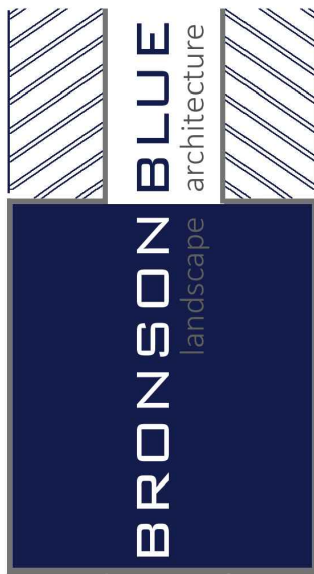
- A. FIRST CUT - TO PREVENT THE BARK FROM BEING  
PEELED WHEN THE BRANCH FALLS.
- B. SECOND CUT - TO REDUCE THE WEIGHT OF BRANCH.
- C. FINAL CUT - ALLOW FOR HEALING COLLAR BUT NO STUBS
- D. BRANCH RIDGES - INDENT PROPERLY BRANCH RIDGES  
WHICH ARE SITE FOR DECAY.

FOR OAKS ONLY - DRAIN ALL WOUNDS OR STUBS

WITH PRUNING PAINT WITH 20 MIN TO PREVENT  
THE SPREAD OF OAK WILT.



THIS DRAWING IS PROVIDED AS AN INSTRUMENT OF SERVICE BY THE LANDSCAPE ARCHITECT AND IS INTENDED FOR USE ON THIS PROJECT ONLY. THE DRAWING REMAINS THE PROPERTY OF THE LANDSCAPE ARCHITECT AND SHALL BE RETURNED TO HIM UPON COMPLETION OF THE CONSTRUCTION WORK. PURSUANT TO THE ARCHITECTURAL WORKS COPYRIGHT PROTECTION ACT OF 1990, ALL DRAWINGS, SPECIFICATIONS, IDEAS, AND DESIGNS, INCLUDING THE OVERALL FORM, ARRANGEMENT, AND COMPOSITION OF SPACES, AND ELEMENTS APPEARING HEREIN, CONSTITUTE THE LANDSCAPE ARCHITECT'S UNPUBLISHED WORK. ANY REPRODUCTION, USE, OR DISCLOSURE OF INFORMATION CONTAINED HEREIN WITHOUT PRIOR WRITTEN CONSENT OF THE LANDSCAPE ARCHITECT IS STRICTLY PROHIBITED.



N <sup>o</sup> .	REVISION	DATE	BY
1	CONCEPT	8-23-22	BBB
2	POOL/PLANTING	9-5-22	BBB
3			BBB
4			BBB

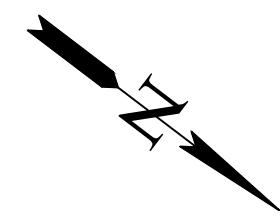
INSTALLATION CONTRACTOR:

ALEX GUTIERREZ

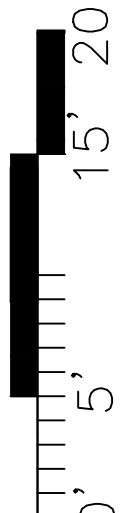
(cell) 214.850.7335

PROJECT LOCATION:

18 Bishops Green  
(The Dominion)  
San Antonio, TX



SCALE : 1/8" = 1'



# PLANTING PLAN