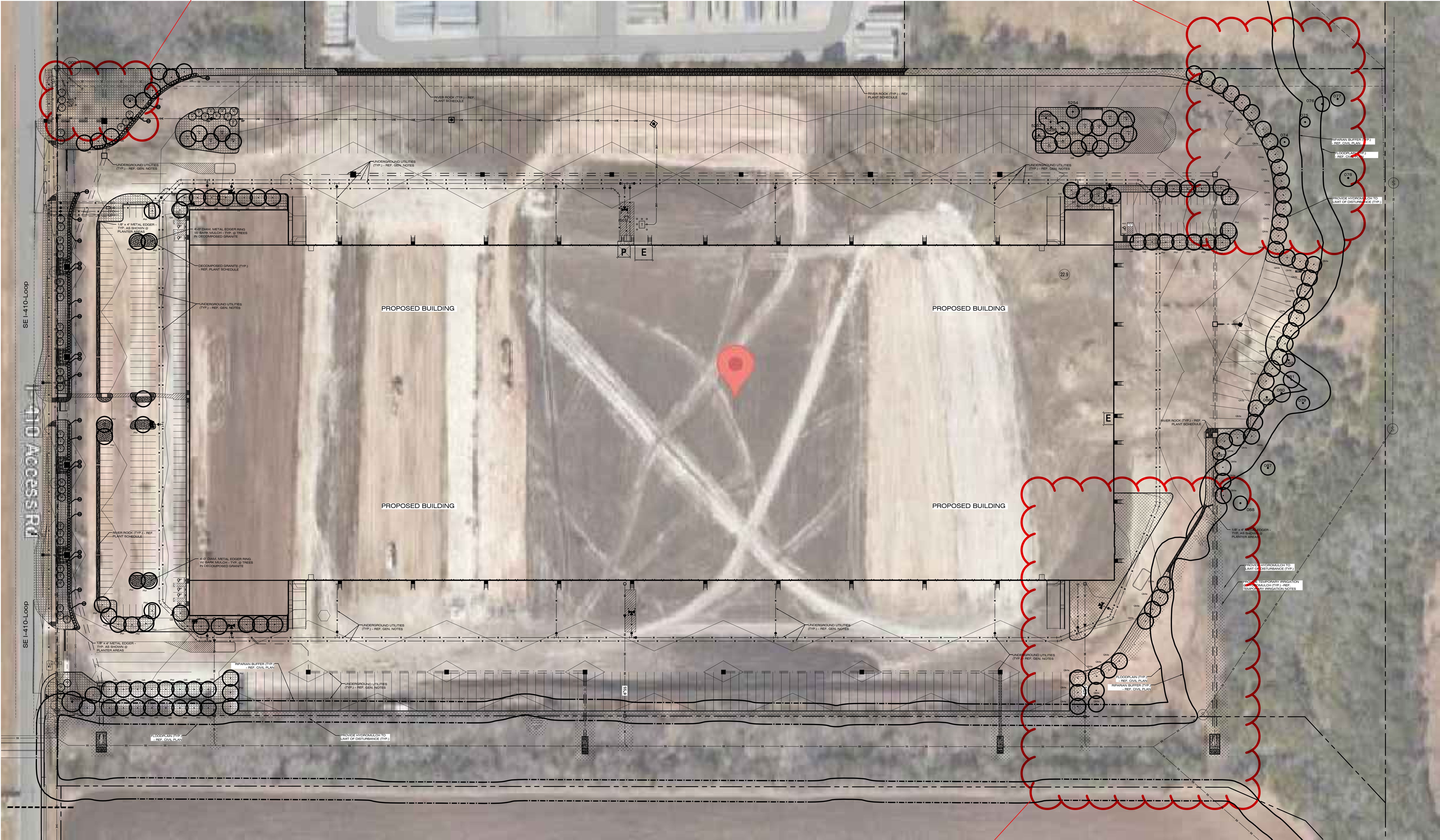


Area empty of proposed trees in landscape plan however an overhead elctrical was installed with sanitary line line previously existing

Development has been completely constructed with site being maxed out with planting of trees at 4 Caliper Inches

Area empty of proposed trees in landscape plan however existing vegetation will remain



Instead of removing trees where the storm-drain pipe will be installed contractor took a shortcut and graded the entire area clouded removing trees in ESA