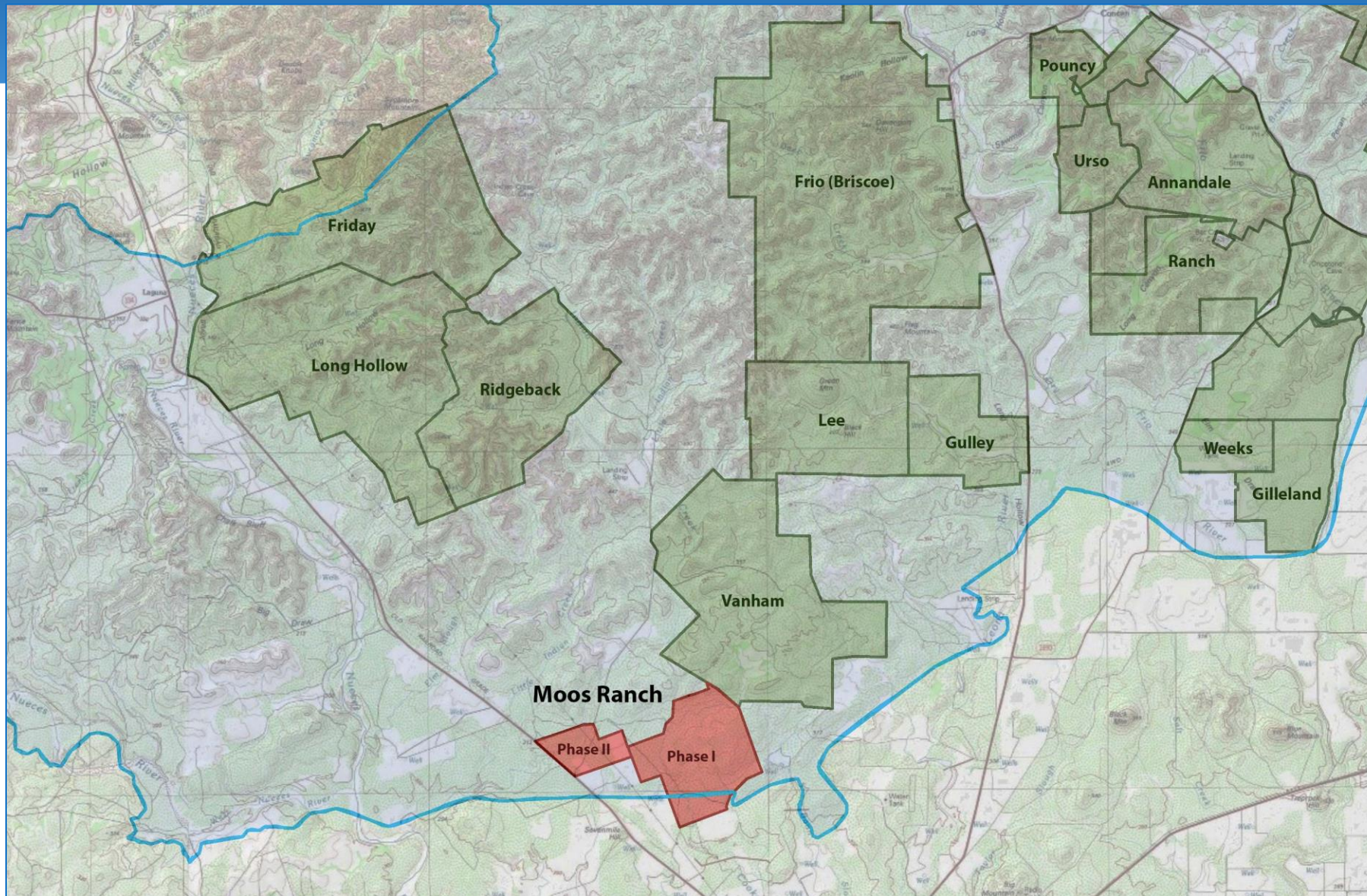




Moos Ranch Phase II
Stoner Ranch
Gilleland Ranch Addition



Moos Ranch Phase II (626.52 Acres) Uvalde County



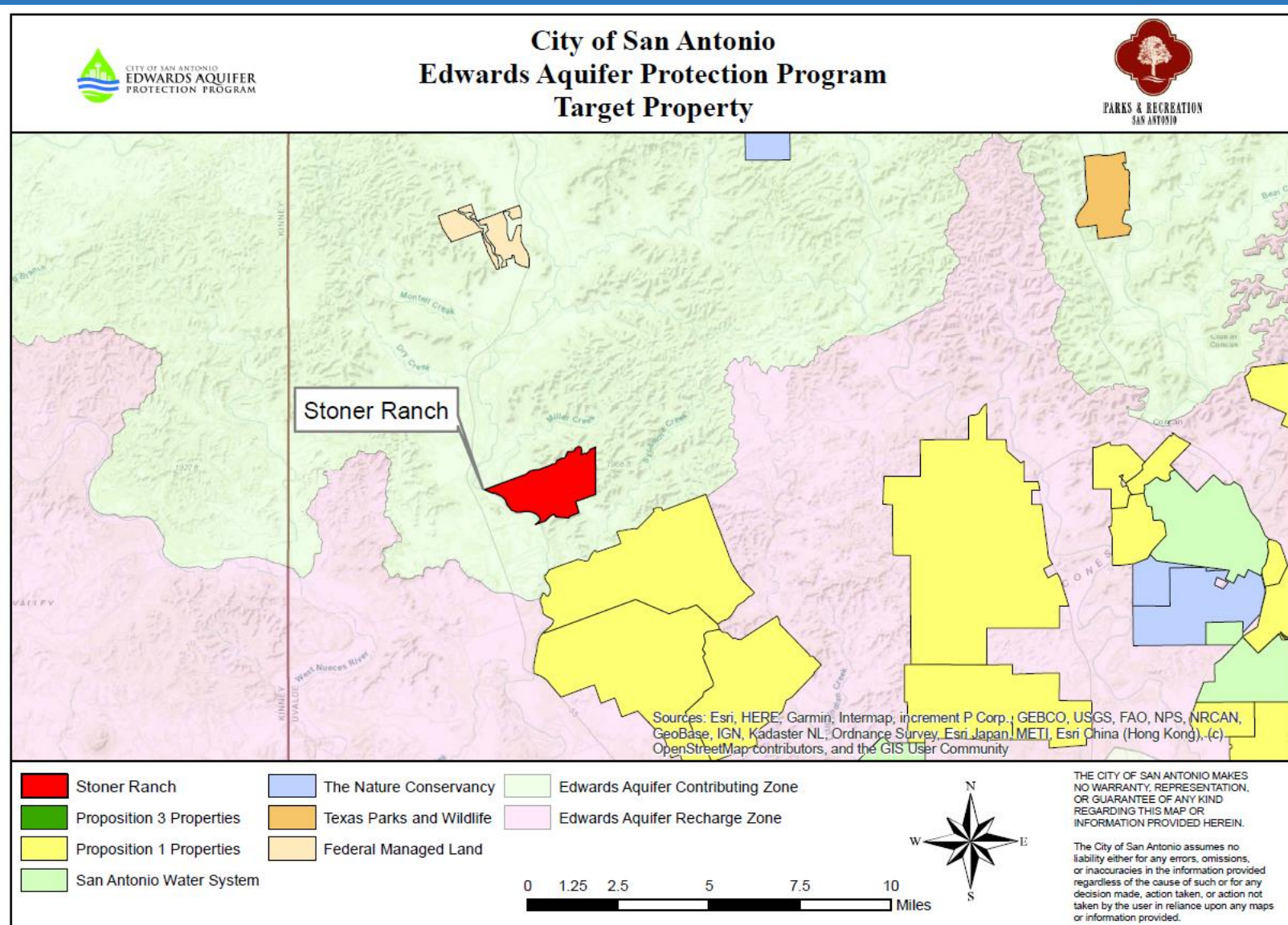
Moos Ranch Phase II (626.52 Acres) Uvalde County

- Second phase of Moos Ranch project; first phase (2,267.57 acres) is set to close in April 2023
- Top 50% in SET model; EAA found high to very high water quantity, high water quality
- Landowner agreed to split easement sale into 2 phases of 2,267 acres and 627 acres; easements will allow no further subdivision
- Survey and environmental reports completed

➤ **Requesting Final Approval**



Stoner Ranch (2,043.75 Acres) Uvalde County



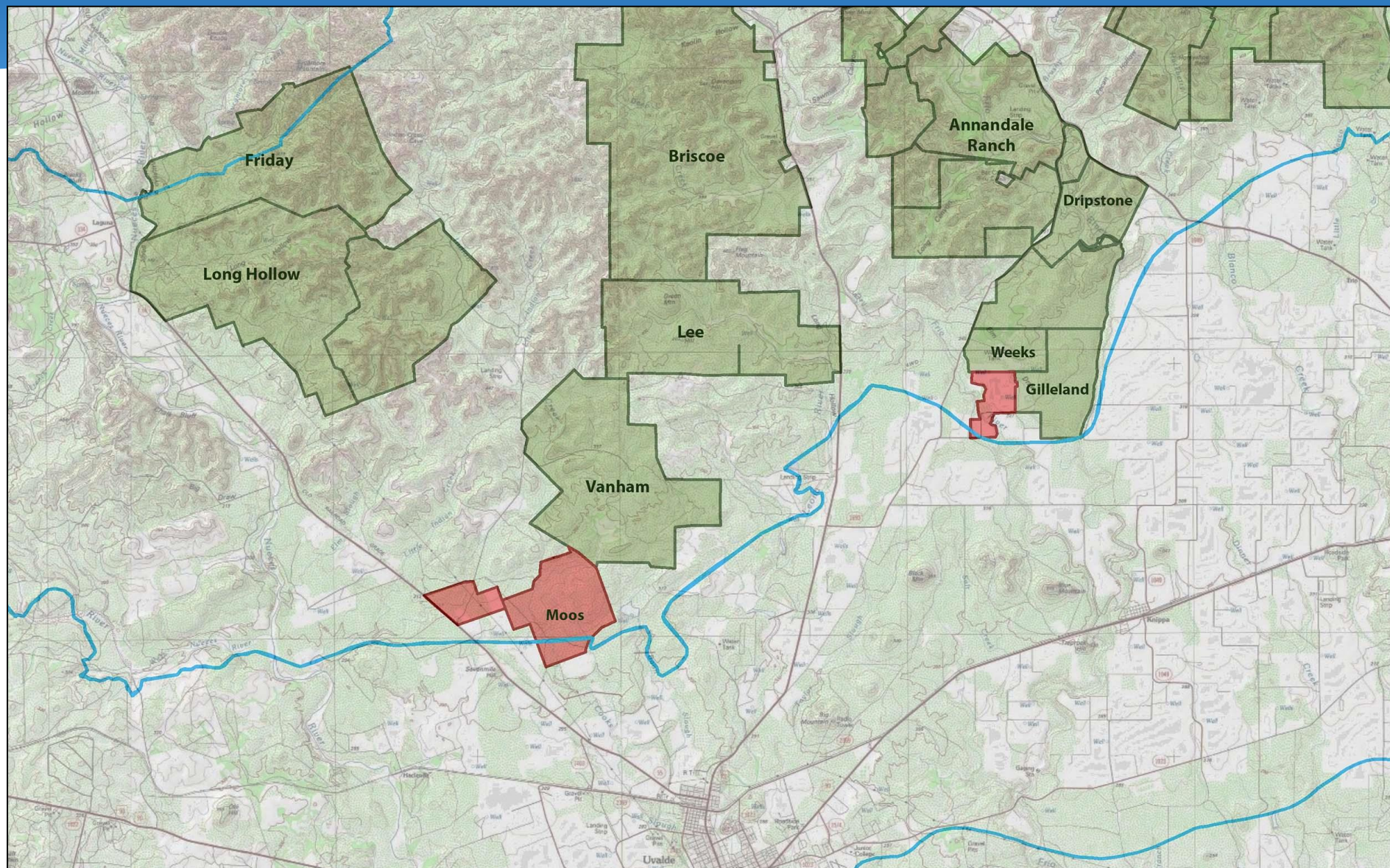
Stoner Ranch (2,043.75 Acres) Uvalde County

- Located NW of Friday Ranch about 2 miles north of Contributing Zone
- Top 40% of Model
- Contains 1.75 miles of Nueces River; 1.4 miles of Miller Creek
- Geological assessment reports high water quality and high water quantity benefits;
- Four ownership interests; Four separate conservation easements
- Surveys and environmental reports completed
- **Requesting Final Approval**





Gilleland Ranch Phase II (~560 Acres) Uvalde County



Gilleland Ranch Phase II (~560 Acres) Uvalde County

Gilleland Ranch Phase II

- Located in Recharge and Artesian Zones adjacent to existing COSA easements
- Several recharge features
- Top 10% in SET model
- EAA Geological Assessment report found moderate water quality and quantity
- **Briefing Only**

