



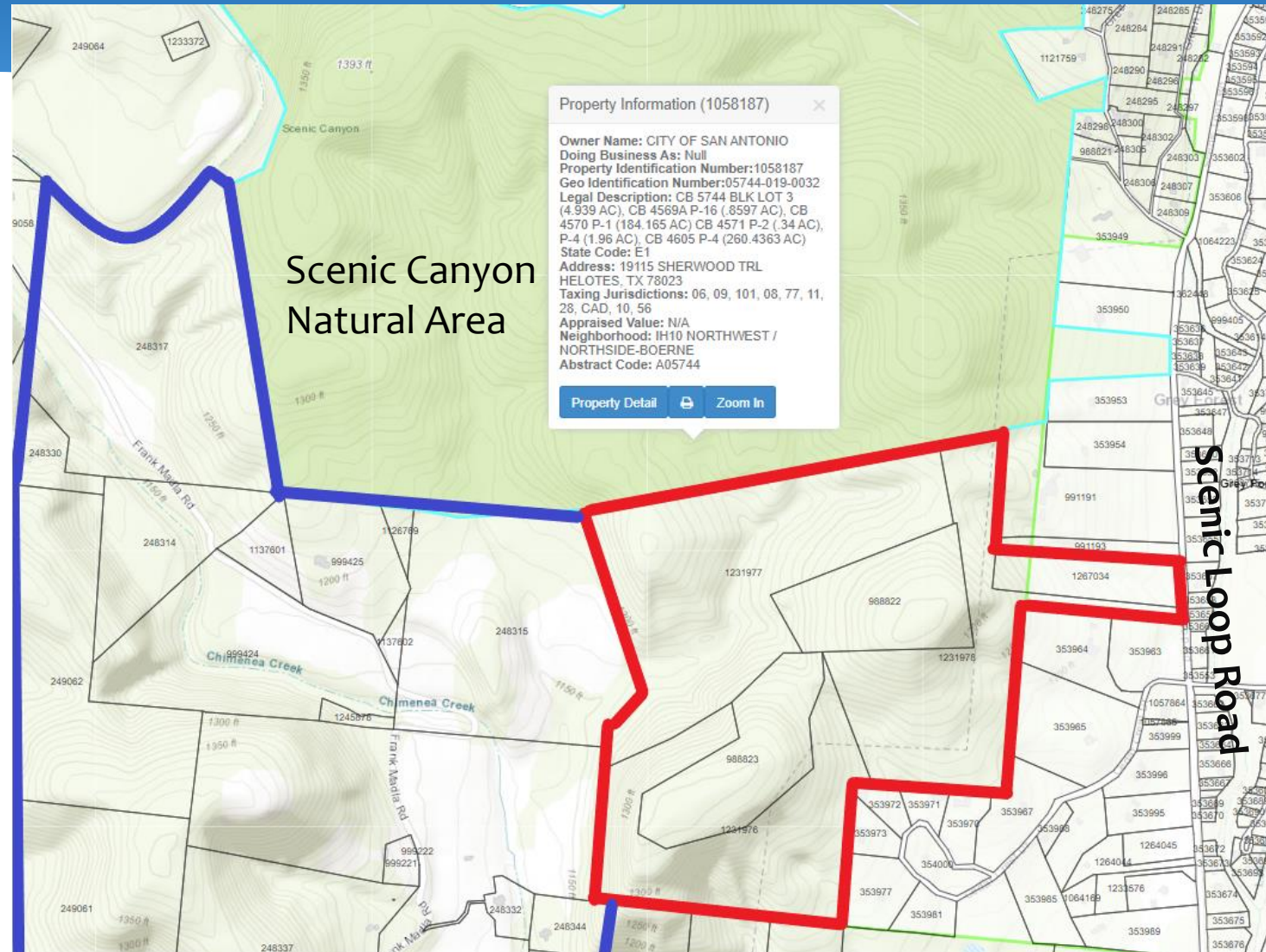
PARKS & RECREATION

Scenic Loop Property



PARKS & RECREATION

Scenic Loop Property (155.7 Acres) Bexar County





PARKS & RECREATION

Scenic Loop Property (155.7 Acres) Bexar County

- Six parcels totaling +/- 155 acres in Contributing Zone for fee simple acquisition
- Located adjacent to 453-acre Scenic Canyon Natural Area
- Ranks in Top 10% of SET Model
- Located within Camp Bullis Sentinel Landscape boundary; potential candidate for partnership with Compatible Lands Foundation and leverage funding with REPI Challenge funding
- EAA Geological Assessment reports high water quality and quantity; Appraisal completed
- Requesting Stage 2 Consideration





PARKS & RECREATION

Scenic Loop Property (155.7 Acres) Bexar County

