

200' Notification Area

Proposed Land Use Change



Medium Density Residential



High Density Residential



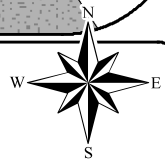
Urban Low Density Residential



Urban Mixed Use



Regional Mixed Use



Data Source: City of San Antonio Enterprise GIS, Bexar Metro 911, Bexar Appraisal District
 "The Geographic Information System Product, received from The City of San Antonio, is provided 'as is' without warranty of any kind, and the City of San Antonio expressly disclaims all express and implied warranties, including but not limited to the implied warranties of merchantability and fitness for a particular purpose. The City of San Antonio does not warrant, guarantee, or make any representation regarding the use, or the results of the use, of the information provided by the City of San Antonio in connection with this project, including its accuracy, reliability, timeliness or otherwise. The user assumes all responsibility and performance of any information obtained from the City of San Antonio is entirely assumed by the user."
 "These warranties are made by the City of San Antonio Department for specific information only."
 City of San Antonio Department for Specific Information Only
 Map Created by: Gustavo Gutierrez
 Map Creation Date: 2/2/2023
 Map File Location: \\ba.computers\\m12\\231600012_Midtown_B&W.mxd
 Land Use Amendment 231600012_Midtown_B&W.mxd
 PDF File name: 230202.pdf

Midtown Regional Center Area **Proposed Plan Amendment 231600012 Area**

City of San Antonio
 Department
 Michael Shannon, PE, CBO
 City of San Antonio
 Department
 Michael Shannon, PE, CBO
 City of San Antonio
 Department
 Michael Shannon, PE, CBO

