

ORDINANCE 2022-12-15-1007

AMENDING THE OFFICIAL ZONING MAP OF THE CITY OF SAN ANTONIO BY AMENDING CHAPTER 35, UNIFIED DEVELOPMENT CODE, SECTION 35-304, OF THE CITY CODE OF SAN ANTONIO, TEXAS BY CHANGING THE ZONING DISTRICT BOUNDARY OF CERTAIN PROPERTY.

* * * * *

WHEREAS, a public hearing was held after notice and publication regarding this amendment to the Official Zoning Map at which time parties in interest and citizens were given an opportunity to be heard; and

WHEREAS, the Zoning Commission has submitted a final report to the City Council regarding this amendment to the Official Zoning Map of the City of San Antonio; **NOW THEREFORE**,

BE IT ORDAINED BY THE CITY COUNCIL OF THE CITY OF SAN ANTONIO:

SECTION 1. Chapter 35, Unified Development Code, Section 35-304, Official Zoning Map, of the City Code of San Antonio, Texas is amended by changing the zoning district boundary of Lot 20 and Lot 21, NCB 12180, located at 2306 Austin Highway, from "C-2 MC-3 AHOD" Commercial Austin Highway/Harry Wurzbach Metropolitan Corridor Overlay Airport Hazard Overlay District and "MH MC-3 AHOD" Manufacture Housing Austin Highway/Harry Wurzbach Metropolitan Corridor Overlay Airport Hazard Overlay District to "C-2 S MC-3 AHOD" Commercial Austin Highway/Harry Wurzbach Metropolitan Corridor Overlay Airport Hazard Overlay District with a Specific Use Authorization for a height to exceed thirty-five (35) feet.

SECTION 2. The City Council finds as follows:

- A.** The specific use will not be contrary to the public interest.
- B.** The specific use will not substantially nor permanently injure the appropriate use of adjacent conforming property in the same district.
- C.** The specific use will be in harmony with the spirit and purpose as set forth in Section 35-423, Specific Use Authorization, of the Unified Development Code.
- D.** The specific use will not substantially weaken the general purposes or the regulations as set forth in Section 35-423, Specific Use Authorization, of the Unified Development Code.
- E.** The specific use will not adversely affect the public health, safety and welfare.


SECTION 3. A site plan is attached as **Exhibit "A"** and made a part hereof and incorporated herein for all purposes. The City council approves this Specific Use Authorization so long as the attached site plan is adhered to.

SECTION 4. All other provisions of Chapter 35 except those expressly amended by this ordinance shall remain in full force and effect including the penalties for violations as made and provided for in Section 35-491.

SECTION 5. The Director of Development Services shall change the zoning records and maps in accordance with this ordinance and the same shall be available and open to the public for inspection.

SECTION 6. This ordinance shall become effective December 25, 2022.

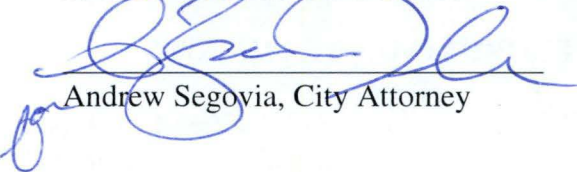
PASSED AND APPROVED this 15th day of December, 2022.


M A Y O R
Ron Nirenberg

ATTEST:


Debbie Racca-Sittre, City Clerk

APPROVED AS TO FORM:


Andrew Segovia, City Attorney



City of San Antonio

City Council Meeting December 15, 2022

11.

2022-12-15-1007

ZONING CASE Z-2022-10700298 S (Council District 2): Ordinance amending the Zoning District Boundary from "C-2 MC-3 AHOD" Commercial Austin Highway/Harry Wurzbach Metropolitan Corridor Overlay Airport Hazard Overlay District and "MH MC-3 AHOD" Manufacture Housing Austin Highway/Harry Wurzbach Metropolitan Corridor Overlay Airport Hazard Overlay District to "C-2 S MC-3 AHOD" Commercial Austin Highway/Harry Wurzbach Metropolitan Corridor Overlay Airport Hazard Overlay District with a Specific Use Authorization for a height to exceed thirty-five (35) feet on Lot 20 and Lot 21, NCB 12180, located at 2306 Austin Highway. Staff and Zoning Commission recommend Approval, pending Plan Amendment. (Associated Plan Amendment PA-2022-11600102)

Councilmember Bravo moved to Approve on Zoning Consent. Councilmember Courage seconded the motion. The motion carried by the following vote:

Aye:	Nirenberg, Bravo, Viagran, Rocha Garcia, Castillo, Cabello Havrda, Pelaez, Courage, Gallagher
Absent:	McKee-Rodriguez, Sandoval

Exhibit “A”

NOTES:

1. PROPERTY IS CURRENTLY ZONED C-2 COMMERCIAL, AND IS IN THE M-10 OVERLAY.
2. SELF-STORAGE FACILITY IS A PERMITTED USE IN THE C-2 ZONING.
3. A MAXIMUM HEIGHT OF 25 FEET MAXIMUM FOR SELF-STORAGE FACILITIES.
4. MAXIMUM BUILDING HEIGHT IS 25 FEET IN ACCORDANCE WITH C-2 REGULATIONS. A STRUCTURE IN AN EXISTING ZONING DISTRICT MAY BE DELETED TO EXCEED THE HEIGHT LIMIT PROVIDED THAT SUCH DELETION IS IN ACCORDANCE WITH THE CITY OF ANTONIO HEIGHTS IN EXCESS OF THE HEIGHT LIMIT. A HEIGHT VARIANCE MAY BE REQUIRED FOR THIS DELETION.
5. MAXIMUM HEIGHT OF ANY PORTION OF A COMMERCIAL ZONING DISTRICT LOCATED WITHIN FIFTY LINEAR FEET OF THE PROPERTY LINE OF AN ESTABLISHED SINGLE-FAMILY RESIDENCE IS MAXIMUM OF 25 FEET. A HEIGHT VARIANCE MAY BE REQUIRED FOR THIS DELETION.
6. MAXIMUM HEIGHT OF ANY PORTION OF A COMMERCIAL ZONING DISTRICT LOCATED WITHIN FIFTY LINEAR FEET OF THE PROPERTY LINE OF AN ESTABLISHED SINGLE-FAMILY RESIDENCE IS MAXIMUM OF 35 FEET AND A MAXIMUM NUMBER OF STOREYS IS 5.
7. THE PROPERTY ADJUTING THE NEAR PROPERTY LINE IS ZONED A-1, A-2, A-3, A-4, A-5, A-6, A-7, A-8, A-9, A-10, A-11, A-12, A-13, A-14, A-15, A-16, A-17, A-18, A-19, A-20, A-21, A-22, A-23, A-24, A-25, A-26, A-27, A-28, A-29, A-30, A-31, A-32, A-33, A-34, A-35, A-36, A-37, A-38, A-39, A-40, A-41, A-42, A-43, A-44, A-45, A-46, A-47, A-48, A-49, A-50, A-51, A-52, A-53, A-54, A-55, A-56, A-57, A-58, A-59, A-60, A-61, A-62, A-63, A-64, A-65, A-66, A-67, A-68, A-69, A-70, A-71, A-72, A-73, A-74, A-75, A-76, A-77, A-78, A-79, A-80, A-81, A-82, A-83, A-84, A-85, A-86, A-87, A-88, A-89, A-90, A-91, A-92, A-93, A-94, A-95, A-96, A-97, A-98, A-99, A-100, A-101, A-102, A-103, A-104, A-105, A-106, A-107, A-108, A-109, A-110, A-111, A-112, A-113, A-114, A-115, A-116, A-117, A-118, A-119, A-120, A-121, A-122, A-123, A-124, A-125, A-126, A-127, A-128, A-129, A-130, A-131, A-132, A-133, A-134, A-135, A-136, A-137, A-138, A-139, A-140, A-141, A-142, A-143, A-144, A-145, A-146, A-147, A-148, A-149, A-150, A-151, A-152, A-153, A-154, A-155, A-156, A-157, A-158, A-159, A-160, A-161, A-162, A-163, A-164, A-165, A-166, A-167, A-168, A-169, A-170, A-171, A-172, A-173, A-174, A-175, A-176, A-177, A-178, A-179, A-180, A-181, A-182, A-183, A-184, A-185, A-186, A-187, A-188, A-189, A-190, A-191, A-192, A-193, A-194, A-195, A-196, A-197, A-198, A-199, A-200, A-201, A-202, A-203, A-204, A-205, A-206, A-207, A-208, A-209, A-210, A-211, A-212, A-213, A-214, A-215, A-216, A-217, A-218, A-219, A-220, A-221, A-222, A-223, A-224, A-225, A-226, A-227, A-228, A-229, A-230, A-231, A-232, A-233, A-234, A-235, A-236, A-237, A-238, A-239, A-240, A-241, A-242, A-243, A-244, A-245, A-246, A-247, A-248, A-249, A-250, A-251, A-252, A-253, A-254, A-255, A-256, A-257, A-258, A-259, A-260, A-261, A-262, A-263, A-264, A-265, A-266, A-267, A-268, A-269, A-270, A-271, A-272, A-273, A-274, A-275, A-276, A-277, A-278, A-279, A-280, A-281, A-282, A-283, A-284, A-285, A-286, A-287, A-288, A-289, A-290, A-291, A-292, A-293, A-294, A-295, A-296, A-297, A-298, A-299, A-300, A-301, A-302, A-303, A-304, A-305, A-306, A-307, A-308, A-309, A-310, A-311, A-312, A-313, A-314, A-315, A-316, A-317, A-318, A-319, A-320, A-321, A-322, A-323, A-324, A-325, A-326, A-327, A-328, A-329, A-330, A-331, A-332, A-333, A-334, A-335, A-336, A-337, A-338, A-339, A-340, A-341, A-342, A-343, A-344, A-345, A-346, A-347, A-348, A-349, A-350, A-351, A-352, A-353, A-354, A-355, A-356, A-357, A-358, A-359, A-360, A-361, A-362, A-363, A-364, A-365, A-366, A-367, A-368, A-369, A-370, A-371, A-372, A-373, A-374, A-375, A-376, A-377, A-378, A-379, A-380, A-381, A-382, A-383, A-384, A-385, A-386, A-387, A-388, A-389, A-390, A-391, A-392, A-393, A-394, A-395, A-396, A-397, A-398, A-399, A-400, A-401, A-402, A-403, A-404, A-405, A-406, A-407, A-408, A-409, A-410, A-411, A-412, A-413, A-414, A-415, A-416, A-417, A-418, A-419, A-420, A-421, A-422, A-423, A-424, A-425, A-426, A-427, A-428, A-429, A-430, A-431, A-432, A-433, A-434, A-435, A-436, A-437, A-438, A-439, A-440, A-441, A-442, A-443, A-444, A-445, A-446, A-447, A-448, A-449, A-450, A-451, A-452, A-453, A-454, A-455, A-456, A-457, A-458, A-459, A-460, A-461, A-462, A-463, A-464, A-465, A-466, A-467, A-468, A-469, A-470, A-471, A-472, A-473, A-474, A-475, A-476, A-477, A-478, A-479, A-480, A-481, A-482, A-483, A-484, A-485, A-486, A-487, A-488, A-489, A-490, A-491, A-492, A-493, A-494, A-495, A-496, A-497, A-498, A-499, A-500, A-501, A-502, A-503, A-504, A-505, A-506, A-507, A-508, A-509, A-510, A-511, A-512, A-513, A-514, A-515, A-516, A-517, A-518, A-519, A-520, A-521, A-522, A-523, A-524, A-525, A-526, A-527, A-528, A-529, A-530, A-531, A-532, A-533, A-534, A-535, A-536, A-537, A-538, A-539, A-540, A-541, A-542, A-543, A-544, A-545, A-546, A-547, A-548, A-549, A-550, A-551, A-552, A-553, A-554, A-555, A-556, A-557, A-558, A-559, A-560, A-561, A-562, A-563, A-564, A-565, A-566, A-567, A-568, A-569, A-570, A-571, A-572, A-573, A-574, A-575, A-576, A-577, A-578, A-579, A-580, A-581, A-582, A-583, A-584, A-585, A-586, A-587, A-588, A-589, A-590, A-591, A-592, A-593, A-594, A-595, A-596, A-597, A-598, A-599, A-600, A-601, A-602, A-603, A-604, A-605, A-606, A-607, A-608, A-609, A-610, A-611, A-612, A-613, A-614, A-615, A-616, A-617, A-618, A-619, A-620, A-621, A-622, A-623, A-624, A-625, A-626, A-627, A-628, A-629, A-630, A-631, A-632, A-633, A-634, A-635, A-636, A-637, A-638, A-639, A-640, A-641, A-642, A-643, A-644, A-645, A-646, A-64

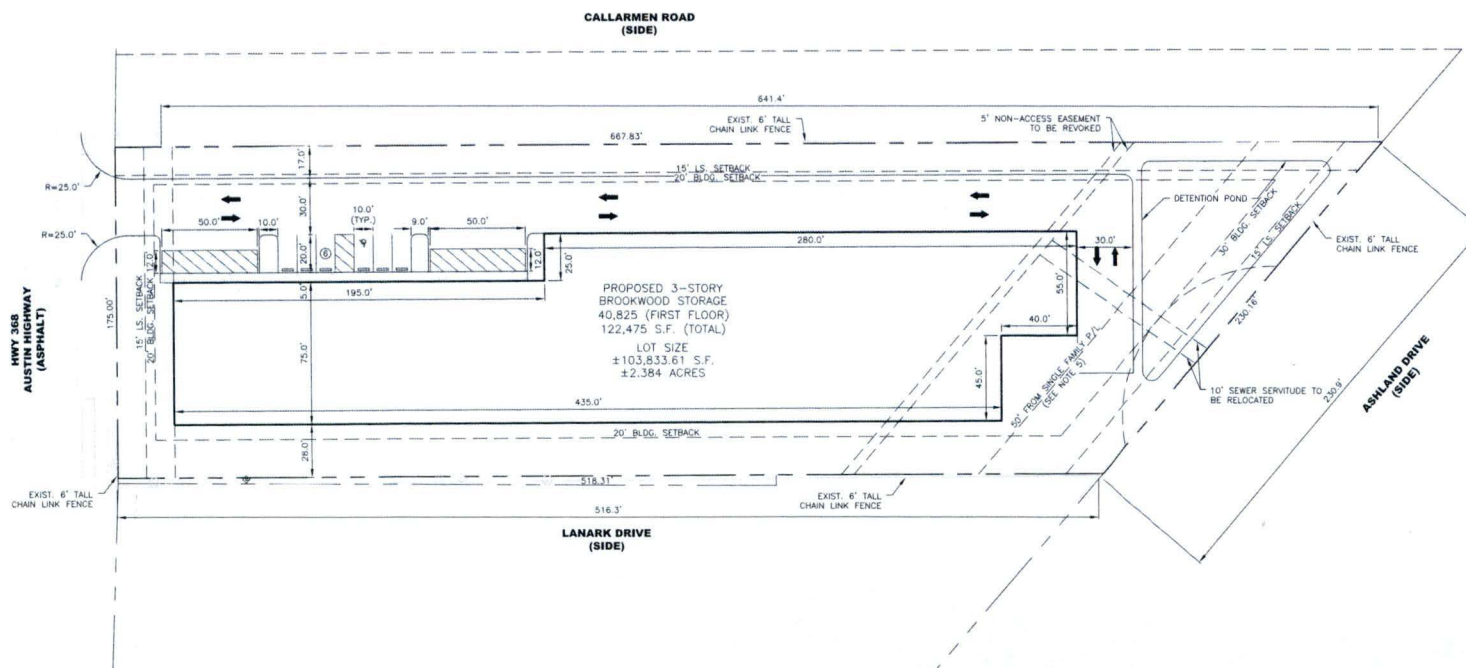
From: "C-2 MC-3 AHOD" Commercial Austin Highway/Harry Wurzbach Metropolitan Corridor Overlay Airport Hazard Overlay District and "MH MC-3 AHOD" Manufacture Housing Austin Highway/Harry Wurzbach Metropolitan Corridor Overlay Airport Hazard Overlay District

Legal: Lot 20 and Lot 21, NCB 12180

Address: 2306 Austin Highway

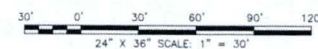
"I, Diane M. Connor, Dennis Mundahl, Rickey Mundahl, and Dale Mundahl, the property owners, acknowledge that this site plan submitted for the purpose of rezoning this property is in accordance with all applicable provisions of the Unified Development Code. Additionally, I understand that City Council approval of a site plan in conjunction with a rezoning case does not relieve me from adherence to any/all City-adopted Codes at the time of plan submittal for building permits."

CONCRETE DRIVE	21,708.31 S.F.	0.498 AC.
SIDEWALK	965.00 S.F.	0.022 AC.
OPEN SPACE	40,335.30 S.F.	0.926 AC.
BUILDING	40,825.00 S.F.	0.937 AC.
DETENTION POND	6,546.67 S.F.	0.150 AC.
TOTAL	103,833.61 S.F.	2.384 AC.



SITE PLAN

Exhibit "A"



BASIN

Engineering & Surveying
2811 B Toulouse Street
New Orleans, Louisiana 70119
(504)-766-0524
AL ECA50038

[illegible]

PRELIMINARY
"NOT FOR
CONSTRUCTION"

DATE ISSUED: 10/06/22
FIRM: BASIN ENGINEERING & SURVEYING
ENGINEER: Wendy R. Evans, P.E.
TX LICENSE NO.: 112197

BROOKWOOD STORAGE 2306 AUSTIN HIGHWAY SAN ANTONIO, TX		CIG	WRE	APP
SITE PLAN				

PROJ. NO.	21-062
DATE	11/07/2022
SHEET NO.	

SHEET NO.
C-1