

200' Notification Area

Proposed Land Use Change



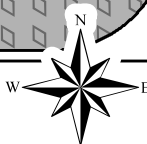
Low Density Residential

High Density Residential



Regional Commercial

Regional Mixed Use



150 300 Feet

Data Source: City of San Antonio Enterprise GIS, Bexar Metro 911, Bexar Appraisal District
 This Geographic Information System Product, created from The City of San Antonio, is provided "as is" without warranty of any kind, and the City of San Antonio expressly disclaims all express and implied warranties, including but not limited to the implied warranties of merchantability and fitness for a particular purpose. The City of San Antonio does not warrant, guarantee, or make any representation regarding the use, or the results of the use, of the information provided to you by the City of San Antonio in terms of correctness, accuracy, reliability, timeliness or otherwise. The user assumes the responsibility for the use of the information provided to you by the City of San Antonio in any way as warranted by the recipient.
 City of San Antonio Planning Department GIS Manager: Wendy Woodruff, wwoodruff@sanantonio.gov. Maps may be reviewed at (210) 207-7973.
 Map Created by: Gustavo Gutierrez
 Map Creation Date: 9/12/2022
 Map File Location: \\fscm\mimisc\29\GIS\Pin50\plan_lib\Archived\Neighborhoods
 Land_Use\Amendments\Amend_2211600089_PortSanAntonio_B&W.mxd
 PDF Filename: Amend_2211600089_PortSanAntonio_B&W.pdf

Port San Antonio Area Regional Center **Proposed Plan Amendment 2211600089 Area**

City of San Antonio
 Development Services
 Department
 Michael Shannon, PE, CBO
 City of San Antonio Development and
 Business Services Center
 PO Box 939898
 San Antonio, TX 78293

