

# HISTORIC AND DESIGN REVIEW COMMISSION

July 20, 2022

**HDRC CASE NO:** 2022-356  
**ADDRESS:** 415 LABOR ST  
**LEGAL DESCRIPTION:** NCB 926 BLK 7 LOT W IRR 90.7 FT OF E IRR 190.85 FT OF 4  
**ZONING:** RM-4, H  
**CITY COUNCIL DIST.:** 1  
**DISTRICT:** Lavaca Historic District  
**APPLICANT:** Luis Fernandez  
**OWNER:** Luis Fernandez  
**TYPE OF WORK:** Fenestration and site modifications  
**APPLICATION RECEIVED:** June 22, 2022  
**60-DAY REVIEW:** Not applicable due to City Council Emergency Orders  
**CASE MANAGER:** Rachel Rettaliata

## REQUEST:

The applicant is requesting a Certificate of Appropriateness for approval to:

1. Install a new, 4-foot-tall front yard fence.
2. Install a new, 6-foot-tall privacy fence along the south (side) property line.
3. Enclose two (2) non-original door openings.
4. Remove concrete site work.

## APPLICABLE CITATIONS:

*Historic Design Guidelines, Chapter 2, Exterior Maintenance and Alterations*

### 1. Materials: Woodwork

#### A. MAINTENANCE (PRESERVATION)

- i. *Inspections*—Conduct semi-annual inspections of all exterior wood elements to verify condition and determine maintenance needs.
- ii. *Cleaning*—Clean exterior surfaces annually with mild household cleaners and water. Avoid using high pressure power washing and any abrasive cleaning or stripping methods that can damage the historic wood siding and detailing.
- iii. *Paint preparation*—Remove peeling, flaking, or failing paint surfaces from historic woodwork using the gentlest means possible to protect the integrity of the historic wood surface. Acceptable methods for paint removal include scraping and sanding, thermal removal, and when necessary, mild chemical strippers. Sand blasting and water blasting should never be used to remove paint from any surface. Sand only to the next sound level of paint, not all the way to the wood, and address any moisture and deterioration issues before repainting.
- iv. *Repainting*—Paint once the surface is clean and dry using a paint type that will adhere to the surface properly. See *General Paint Type Recommendations* in Preservation Brief #10 listed under Additional Resources for more information.
- v. *Repair*—Repair deteriorated areas or refasten loose elements with an exterior wood filler, epoxy, or glue.

#### B. ALTERATIONS (REHABILITATION, RESTORATION, AND RECONSTRUCTION)

- i. *Facade materials*—Avoid removing materials that are in good condition or that can be repaired in place. Consider exposing original wood siding if it is currently covered with vinyl or aluminum siding, stucco, or other materials that have not achieved historic significance.
- ii. *Materials*—Use in-kind materials when possible or materials similar in size, scale, and character when exterior woodwork is beyond repair. Ensure replacement siding is installed to match the original pattern, including exposures. Do not introduce modern materials that can accelerate and hide deterioration of historic materials. Hardiboard and other cementitious materials are not recommended.
- iii. *Replacement elements*—Replace wood elements in-kind as a replacement for existing wood siding, matching in profile, dimensions, material, and finish, when beyond repair.

### 2. Materials: Masonry and Stucco

#### A. MAINTENANCE (PRESERVATION)



- i. *Paint*—Avoid painting historically unpainted surfaces. Exceptions may be made for severely deteriorated material where other consolidation or stabilization methods are not appropriate. When painting is acceptable, utilize a water permeable paint to avoid trapping water within the masonry.
  - ii. *Clear area*—Keep the area where masonry or stucco meets the ground clear of water, moisture, and vegetation.
  - iii. *Vegetation*—Avoid allowing ivy or other vegetation to grow on masonry or stucco walls, as it may loosen mortar and stucco and increase trapped moisture.
  - iv. *Cleaning*—Use the gentlest means possible to clean masonry and stucco when needed, as improper cleaning can damage the surface. Avoid the use of any abrasive, strong chemical, sandblasting, or high-pressure cleaning method.
- B. ALTERATIONS (REHABILITATION, RESTORATION, AND RECONSTRUCTION)**
- i. *Patching*—Repair masonry or stucco by patching or replacing it with in-kind materials whenever possible. Utilize similar materials that are compatible with the original in terms of composition, texture, application technique, color, and detail, when in-kind replacement is not possible. EIFS is not an appropriate patching or replacement material for stucco.
  - ii. *Repointing*—The removal of old or deteriorated mortar should be done carefully by a professional to ensure that masonry units are not damaged in the process. Use mortar that matches the original in color, profile, and composition when repointing. Incompatible mortar can exceed the strength of historic masonry and results in deterioration. Ensure that the new joint matches the profile of the old joint when viewed in section. It is recommended that a test panel is prepared to ensure the mortar is the right strength and color.
  - iii. *Removing paint*—Take care when removing paint from masonry as the paint may be providing a protectant layer or hiding modifications to the building. Use the gentlest means possible, such as alkaline poultice cleaners and strippers, to remove paint from masonry.
  - iv. *Removing stucco*—Remove stucco from masonry surfaces where it is historically inappropriate. Prepare a test panel to ensure that underlying masonry has not been irreversibly damaged before proceeding.

### 3. Materials: Roofs

#### A. MAINTENANCE (PRESERVATION)

- i. *Regular maintenance and cleaning*—Avoid the build-up of accumulated dirt and retained moisture. This can lead to the growth of moss and other vegetation, which can lead to roof damage. Check roof surface for breaks or holes and flashing for open seams and repair as needed.

#### B. ALTERATIONS (REHABILITATION, RESTORATION, AND RECONSTRUCTION)

- i. *Roof replacement*—Consider roof replacement when more than 25-30 percent of the roof area is damaged or 25-30 percent of the roof tiles (slate, clay tile, or cement) or shingles are missing or damaged.
- ii. *Roof form*—Preserve the original shape, line, pitch, and overhang of historic roofs when replacement is necessary.
- iii. *Roof features*—Preserve and repair distinctive roof features such as cornices, parapets, dormers, open eaves with exposed rafters and decorative or plain rafter tails, flared eaves or decorative purlins, and brackets with shaped ends.
- iv. *Materials: sloped roofs*—Replace roofing materials in-kind whenever possible when the roof must be replaced. Retain and re-use historic materials when large-scale replacement of roof materials other than asphalt shingles is required (e.g., slate or clay tiles). Salvaged materials should be re-used on roof forms that are most visible from the public right-of-way. Match new roofing materials to the original materials in terms of their scale, color, texture, profile, and style, or select materials consistent with the building style, when in-kind replacement is not possible.
- v. *Materials: flat roofs*—Allow use of contemporary roofing materials on flat or gently sloping roofs not visible from the public right-of-way.
- vi. *Materials: metal roofs*—Use metal roofs on structures that historically had a metal roof or where a metal roof is appropriate for the style or construction period. Refer to Checklist for Metal Roofs on page 10 for desired metal roof specifications when considering a new metal roof. New metal roofs that adhere to these guidelines can be approved administratively as long as documentation can be provided that shows that the home has historically had a metal roof.
- vii. *Roof vents*—Maintain existing historic roof vents. When deteriorated beyond repair, replace roof vents in-kind or with one similar in design and material to those historically used when in-kind replacement is not possible.

### 4. Materials: Metal

#### A. MAINTENANCE (PRESERVATION)

- i. *Cleaning*—Use the gentlest means possible when cleaning metal features to avoid damaging the historic finish. Prepare a test panel to determine appropriate cleaning methods before proceeding. Use a wire brush to remove corrosion or paint build up on hard metals like wrought iron, steel, and cast iron.
- ii. *Repair*—Repair metal features using methods appropriate to the specific type of metal.
- iii. *Paint*—Avoid painting metals that were historically exposed such as copper and bronze.



## B. ALTERATIONS (REHABILITATION, RESTORATION, AND RECONSTRUCTION)

- i. *Replacement*—Replace missing or significantly damaged metal features in-kind or with a substitute compatible in size, form, material, and general appearance to the historical feature when in-kind replacement is not possible.
- ii. *Rust*—Select replacement anchors of stainless steel to limit rust and associated expansion that can cause cracking of the surrounding material such as wood or masonry. Insert anchors into the mortar joints of masonry buildings.
- iii. *New metal features*—Add metal features based on accurate evidence of the original, such as photographs. Base the design on the architectural style of the building and historic patterns if no such evidence exists.

## 5. Architectural Features: Lighting

### A. MAINTENANCE (PRESERVATION)

- i. *Lighting*—Preserve historic light fixtures in place and maintain through regular cleaning and repair as needed.

### B. ALTERATIONS (REHABILITATION, RESTORATION, AND RECONSTRUCTION)

- i. *Rewiring*—Consider rewiring historic fixtures as necessary to extend their lifespan.
- ii. *Replacement lighting*—Replace missing or severely damaged historic light fixtures in-kind or with fixtures that match the original in appearance and materials when in-kind replacement is not feasible. Fit replacement fixtures to the existing mounting location.
- iii. *New light fixtures*—Avoid damage to the historic building when installing necessary new light fixtures, ensuring they may be removed in the future with little or no damage to the building. Place new light fixtures and those not historically present in locations that do not distract from the façade of the building while still directing light where needed. New light fixtures should be unobtrusive in design and should not rust or stain the building.

## 6. Architectural Features: Doors, Windows, and Screens

### A. MAINTENANCE (PRESERVATION)

- i. *Openings*—Preserve existing window and door openings. Avoid enlarging or diminishing to fit stock sizes or air conditioning units. Avoid filling in historic door or window openings. Avoid creating new primary entrances or window openings on the primary façade or where visible from the public right-of-way.
- ii. *Doors*—Preserve historic doors including hardware, fanlights, sidelights, pilasters, and entablatures.
- iii. *Windows*—Preserve historic windows. When glass is broken, the color and clarity of replacement glass should match the original historic glass.
- iv. *Screens and shutters*—Preserve historic window screens and shutters.
- v. *Storm windows*—Install full-view storm windows on the interior of windows for improved energy efficiency. Storm window may be installed on the exterior so long as the visual impact is minimal and original architectural details are not obscured.

### B. ALTERATIONS (REHABILITATION, RESTORATION, AND RECONSTRUCTION)

- i. *Doors*—Replace doors, hardware, fanlight, sidelights, pilasters, and entablatures in-kind when possible and when deteriorated beyond repair. When in-kind replacement is not feasible, ensure features match the size, material, and profile of the historic element.
- ii. *New entrances*—Ensure that new entrances, when necessary to comply with other regulations, are compatible in size, scale, shape, proportion, material, and massing with historic entrances.
- iii. *Glazed area*—Avoid installing interior floors or suspended ceilings that block the glazed area of historic windows.
- iv. *Window design*—Install new windows to match the historic or existing windows in terms of size, type, configuration, material, form, appearance, and detail when original windows are deteriorated beyond repair.
- v. *Muntins*—Use the exterior muntin pattern, profile, and size appropriate for the historic building when replacement windows are necessary. Do not use internal muntins sandwiched between layers of glass.
- vi. *Replacement glass*—Use clear glass when replacement glass is necessary. Do not use tinted glass, reflective glass, opaque glass, and other non-traditional glass types unless it was used historically. When established by the architectural style of the building, patterned, leaded, or colored glass can be used.
- vii. *Non-historic windows*—Replace non-historic incompatible windows with windows that are typical of the architectural style of the building.
- viii. *Security bars*—Install security bars only on the interior of windows and doors.
- ix. *Screens*—Utilize wood screen window frames matching in profile, size, and design of those historically found when the existing screens are deteriorated beyond repair. Ensure that the tint of replacement screens closely matches the original screens or those used historically.



x. *Shutters*—Incorporate shutters only where they existed historically and where appropriate to the architectural style of the house. Shutters should match the height and width of the opening and be mounted to be operational or appear to be operational. Do not mount shutters directly onto any historic wall material.

## 7. Architectural Features: Porches, Balconies, and Porte-Cocheres

### A. MAINTENANCE (PRESERVATION)

- i. *Existing porches, balconies, and porte-cocheres*—Preserve porches, balconies, and porte-cocheres. Do not add new porches, balconies, or porte-cocheres where not historically present.
- ii. *Balusters*—Preserve existing balusters. When replacement is necessary, replace in-kind when possible or with balusters that match the originals in terms of materials, spacing, profile, dimension, finish, and height of the railing.
- iii. *Floors*—Preserve original wood or concrete porch floors. Do not cover original porch floors of wood or concrete with carpet, tile, or other materials unless they were used historically.

### B. ALTERATIONS (REHABILITATION, RESTORATION, AND RECONSTRUCTION)

- i. *Front porches*—Refrain from enclosing front porches. Approved screen panels should be simple in design as to not change the character of the structure or the historic fabric.
- ii. *Side and rear porches*—Refrain from enclosing side and rear porches, particularly when connected to the main porch or balcony. Original architectural details should not be obscured by any screening or enclosure materials. Alterations to side and rear porches should result in a space that functions, and is visually interpreted as, a porch.
- iii. *Replacement*—Replace in-kind porches, balconies, porte-cocheres, and related elements, such as ceilings, floors, and columns, when such features are deteriorated beyond repair. When in-kind replacement is not feasible, the design should be compatible in scale, massing, and detail while materials should match in color, texture, dimensions, and finish.
- iv. *Adding elements*—Design replacement elements, such as stairs, to be simple so as to not distract from the historic character of the building. Do not add new elements and details that create a false historic appearance.
- v. *Reconstruction*—Reconstruct porches, balconies, and porte-cocheres based on accurate evidence of the original, such as photographs. If no such evidence exists, the design should be based on the architectural style of the building and historic patterns.

## 8. Architectural Features: Foundations

### A. MAINTENANCE (PRESERVATION)

- i. *Details*—Preserve the height, proportion, exposure, form, and details of a foundation such as decorative vents, grilles, and lattice work.
- ii. *Ventilation*—Ensure foundations are vented to control moisture underneath the dwelling, preventing deterioration.
- iii. *Drainage*—Ensure downspouts are directed away and soil is sloped away from the foundation to avoid moisture collection near the foundation.
- iv. *Repair*—Inspect foundations regularly for sufficient drainage and ventilation, keeping it clear of vegetation. Also inspect for deteriorated materials such as limestone and repair accordingly. Refer to maintenance and alteration of applicable materials, for additional guidelines.

### B. ALTERATIONS (REHABILITATION, RESTORATION, AND RECONSTRUCTION)

- i. *Replacement features*—Ensure that features such as decorative vents and grilles and lattice panels are replaced in-kind when deteriorated beyond repair. When in-kind replacement is not possible, use features matching in size, material, and design. Replacement skirting should consist of durable, proven materials, and should either match the existing siding or be applied to have minimal visual impact.
- ii. *Alternative materials*—Cedar piers may be replaced with concrete piers if they are deteriorated beyond repair.
- iii. *Shoring*—Provide proper support of the structure while the foundation is rebuilt or repaired.
- iv. *New utilities*—Avoid placing new utility and mechanical connections through the foundation along the primary façade or where visible from the public right-of-way.

## 9. Outbuildings, Including Garages

### A. MAINTENANCE (PRESERVATION)

- i. *Existing outbuildings*—Preserve existing historic outbuildings where they remain.
- ii. *Materials*—Repair outbuildings and their distinctive features in-kind. When new materials are needed, they should match existing materials in color, durability, and texture. Refer to maintenance and alteration of applicable materials above, for additional guidelines.



## B. ALTERATIONS (REHABILITATION, RESTORATION, AND RECONSTRUCTION)

- i. *Garage doors*—Ensure that replacement garage doors are compatible with those found on historic garages in the district (e.g., wood paneled) as well as with the principal structure. When not visible from the public right-of-way, modern paneled garage doors may be acceptable.
- ii. *Replacement*—Replace historic outbuildings only if they are beyond repair. In-kind replacement is preferred; however, when it is not possible, ensure that they are reconstructed in the same location using similar scale, proportion, color, and materials as the original historic structure.
- iii. *Reconstruction*—Reconstruct outbuildings based on accurate evidence of the original, such as photographs. If no such evidence exists, the design should be based on the architectural style of the primary building and historic patterns in the district. Add permanent foundations to existing outbuildings where foundations did not historically exist only as a last resort.

## 11. Canopies and Awnings

### A. MAINTENANCE (PRESERVATION)

- i. *Existing canopies and awnings*—Preserve existing historic awnings and canopies through regular cleaning and periodic inspections of the support system to ensure they are secure.

### B. ALTERATIONS (REHABILITATION, RESTORATION, AND RECONSTRUCTION)

- i. *Replacement canopies and awnings*—Replace canopies and awnings in-kind whenever possible.
- ii. *New canopies and awnings*—Add canopies and awnings based on accurate evidence of the original, such as photographs. If no such evidence exists, the design of new canopies and awnings should be based on the architectural style of the building and be proportionate in shape and size to the scale of the building façade to which they will be attached. See UDC Section 35-609(j).
- iii. *Lighting*—Do not internally illuminate awnings; however, lighting may be concealed in an awning to provide illumination to sidewalks or storefronts.
- iv. *Awning materials*—Use fire-resistant canvas awnings that are striped or solid in a color that is appropriate to the period of the building.
- v. *Building features*—Avoid obscuring building features such as arched transom windows with new canopies or awnings.
- vi. *Support structure*—Support awnings with metal or wood frames, matching the historic support system whenever possible. Minimize damage to historic materials when anchoring the support system. For example, anchors should be inserted into mortar rather than brick. Ensure that the support structure is integrated into the structure of the building as to avoid stress on the structural stability of the façade.

## *Historic Design Guidelines, Chapter 5, Guidelines for Site Elements*

## 1. Topography

### A. TOPOGRAPHIC FEATURES

- i. *Historic topography*—Avoid significantly altering the topography of a property (i.e., extensive grading). Do not alter character-defining features such as berms or sloped front lawns that help define the character of the public right-of-way. Maintain the established lawn to help prevent erosion. If turf is replaced over time, new plant materials in these areas should be low-growing and suitable for the prevention of erosion.
- ii. *New construction*—Match the historic topography of adjacent lots prevalent along the block face for new construction. Do not excavate raised lots to accommodate additional building height or an additional story for new construction.
- iii. *New elements*—Minimize changes in topography resulting from new elements, like driveways and walkways, through appropriate siting and design. New site elements should work with, rather than change, character-defining topography when possible.

## 2. Fences and Walls

### A. HISTORIC FENCES AND WALLS

- i. *Preserve*—Retain historic fences and walls.
- ii. *Repair and replacement*—Replace only deteriorated sections that are beyond repair. Match replacement materials (including mortar) to the color, texture, size, profile, and finish of the original.
- iii. *Application of paint and cementitious coatings*—Do not paint historic masonry walls or cover them with stone facing or stucco or other cementitious coatings.

### B. NEW FENCES AND WALLS



- i. *Design*—New fences and walls should appear similar to those used historically within the district in terms of their scale, transparency, and character. Design of fence should respond to the design and materials of the house or main structure.
- ii. *Location*—Avoid installing a fence or wall in a location where one did not historically exist, particularly within the front yard. The appropriateness of a front yard fence or wall is dependent on conditions within a specific historic district. New front yard fences or wall should not be introduced within historic districts that have not historically had them.
- iii. *Height*—Limit the height of new fences and walls within the front yard to a maximum of four feet. The appropriateness of a front yard fence is dependent on conditions within a specific historic district. New front yard fences should not be introduced within historic districts that have not historically had them. If a taller fence or wall existed historically, additional height may be considered. The height of a new retaining wall should not exceed the height of the slope it retains.
- iv. *Prohibited materials*—Do not use exposed concrete masonry units (CMU), Keystone or similar interlocking retaining wall systems, concrete block, vinyl fencing, or chain link fencing.
- v. *Appropriate materials*—Construct new fences or walls of materials similar to fence materials historically used in the district. Select materials that are similar in scale, texture, color, and form as those historically used in the district, and that are compatible with the main structure. Screening incompatible uses—Review alternative fence heights and materials for appropriateness where residential properties are adjacent to commercial or other potentially incompatible uses.

### C. PRIVACY FENCES AND WALLS

- i. *Relationship to front facade*—Set privacy fences back from the front façade of the building, rather than aligning them with the front façade of the structure to reduce their visual prominence.
- ii. *Location* – Do not use privacy fences in front yards.

## 3. Landscape Design

### A. PLANTINGS

- i. *Historic Gardens*—Maintain front yard gardens when appropriate within a specific historic district.
- ii. *Historic Lawns*—Do not fully remove and replace traditional lawn areas with impervious hardscape. Limit the removal of lawn areas to mulched planting beds or pervious hardscapes in locations where they would historically be found, such as along fences, walkways, or drives. Low-growing plantings should be used in historic lawn areas; invasive or large-scale species should be avoided. Historic lawn areas should never be reduced by more than 50%.
- iii. *Native xeric plant materials*—Select native and/or xeric plants that thrive in local conditions and reduce watering usage. See UDC Appendix E: San Antonio Recommended Plant List—All Suited to Xeriscape Planting Methods, for a list of appropriate materials and planting methods. Select plant materials with a similar character, growth habit, and light requirements as those being replaced.
- iv. *Plant palettes*—If a varied plant palette is used, incorporate species of taller heights, such informal elements should be restrained to small areas of the front yard or to the rear or side yard so as not to obstruct views of or otherwise distract from the historic structure.
- v. *Maintenance*—Maintain existing landscape features. Do not introduce landscape elements that will obscure the historic structure or are located as to retain moisture on walls or foundations (e.g., dense foundation plantings or vines) or as to cause damage.

### B. ROCKS OR HARDSCAPE

- i. *Impervious surfaces* —Do not introduce large pavers, asphalt, or other impervious surfaces where they were not historically located.
- ii. *Pervious and semi-pervious surfaces*—New pervious hardscapes should be limited to areas that are not highly visible, and should not be used as wholesale replacement for plantings. If used, small plantings should be incorporated into the design.
- iii. *Rock mulch and gravel* - Do not use rock mulch or gravel as a wholesale replacement for lawn area. If used, plantings should be incorporated into the design.

### C. MULCH

*Organic mulch* – Organic mulch should not be used as a wholesale replacement for plant material. Organic mulch with appropriate plantings should be incorporated in areas where appropriate such as beneath a tree canopy.

- i. *Inorganic mulch* – Inorganic mulch should not be used in highly-visible areas and should never be used as a wholesale replacement for plant material. Inorganic mulch with appropriate plantings should be incorporated in areas where appropriate such as along a foundation wall where moisture retention is discouraged.

### D. TREES



- i. *Preservation*—Preserve and protect from damage existing mature trees and heritage trees. See UDC Section 35-523 (Tree Preservation) for specific requirements.
- ii. *New Trees* – Select new trees based on site conditions. Avoid planting new trees in locations that could potentially cause damage to a historic structure or other historic elements. Species selection and planting procedure should be done in accordance with guidance from the City Arborist.
- iii. *Maintenance* – Proper pruning encourages healthy growth and can extend the lifespan of trees. Avoid unnecessary or harmful pruning. A certified, licensed arborist is recommended for the pruning of mature trees and heritage trees.

#### 4. Residential Streetscapes

##### A. PLANTING STRIPS

- i. *Street trees*—Protect and encourage healthy street trees in planting strips. Replace damaged or dead trees with trees of a similar species, size, and growth habit as recommended by the City Arborist.
- ii. *Lawns*— Maintain the use of traditional lawn in planting strips or low plantings where a consistent pattern has been retained along the block frontage. If mulch or gravel beds are used, low-growing plantings should be incorporated into the design.
- iii. *Alternative materials*—Do not introduce impervious hardscape, raised planting beds, or other materials into planting strips where they were not historically found.

##### B. PARKWAYS AND PLANTED MEDIANS

- i. *Historic plantings*—Maintain the park-like character of historic parkways and planted medians by preserving mature vegetation and retaining historic design elements. Replace damaged or dead plant materials with species of a like size, growth habit, and ornamental characteristics.
- ii. *Hardscape*—Do not introduce new pavers, concrete, or other hardscape materials into parkways and planted medians where they were not historically found.

##### C. STREET ELEMENTS

- i. *Site elements*—Preserve historic street lights, street markers, roundabouts, and other unique site elements found within the public right-of-way as street improvements and other public works projects are completed over time.
- ii. *Historic paving materials*—Retain historic paving materials, such as brick pavers or colored paving, within the public right-of-way and repair in place with like materials.

#### 5. Sidewalks, Walkways, Driveways, and Curbing

##### A. SIDEWALKS AND WALKWAYS

- i. *Maintenance*—Repair minor cracking, settling, or jamming along sidewalks to prevent uneven surfaces. Retain and repair historic sidewalk and walkway paving materials—often brick or concrete—in place.
- ii. *Replacement materials*—Replace those portions of sidewalks or walkways that are deteriorated beyond repair. Every effort should be made to match existing sidewalk color and material.
- iii. *Width and alignment*— Follow the historic alignment, configuration, and width of sidewalks and walkways. Alter the historic width or alignment only where absolutely necessary to accommodate the preservation of a significant tree.
- iv. *Stamped concrete*—Preserve stamped street names, business insignias, or other historic elements of sidewalks and walkways when replacement is necessary.
- v. *ADA compliance*—Limit removal of historic sidewalk materials to the immediate intersection when ramps are added to address ADA requirements.

##### B. DRIVEWAYS

- i. *Driveway configuration*—Retain and repair in place historic driveway configurations, such as ribbon drives. Incorporate a similar driveway configuration—materials, width, and design—to that historically found on the site. Historic driveways are typically no wider than 10 feet. Pervious paving surfaces may be considered where replacement is necessary to increase stormwater infiltration.
- ii. *Curb cuts and ramps*—Maintain the width and configuration of original curb cuts when replacing historic driveways. Avoid introducing new curb cuts where not historically found.

##### C. CURBING

- i. *Historic curbing*—Retain historic curbing wherever possible. Historic curbing in San Antonio is typically constructed of concrete with a curved or angular profile.
- ii. *Replacement curbing*—Replace curbing in-kind when deteriorated beyond repair. Where in-kind replacement is not be feasible, use a comparable substitute that duplicates the color, texture, durability, and profile of the original. Retaining walls and curbing should not be added to the sidewalk design unless absolutely necessary.

#### FINDINGS:



- a. The primary structure located at 415 Labor is a 1-story, single-family structure constructed circa 1910 in the Folk Victorian style. The property first appears on the Sanborn maps in 1912. The structure features a cross gable composition shingle roof, wood cladding, a decorative gable end detail, turned wood porch columns, and one-over-one original wood and aluminum replacement windows. The property is contributing to the Lavaca Historic District.
- b. FRONT YARD FENCE INSTALLATION – The applicant has proposed to install a 4-foot-tall, wood-frame front yard fence with vertical metal posts and one (1) pedestrian gate. The applicant has proposed to install the front yard fence along the front property line to meet the existing privacy fence on the north property line and terminate at the south property line. Guideline 2.B.ii for Site Elements states that applicants should avoid installing a fence or wall in a location where one did not historically exist, particularly within the front yard. The appropriateness of a front yard fence or wall is dependent on conditions within a specific historic district. New front yard fences or wall should not be introduced within historic districts that have not historically had them. Front yard fences are common in the Lavaca Historic District and at adjacent properties. Staff finds the proposal appropriate but finds that the applicant should install a front yard fence similar to those found elsewhere in the district.
- c. PRIVACY FENCE INSTALLATION – The applicant has proposed to install a 6-foot-tall wood privacy fence along the south property line to meet the proposed front yard fence at the front property line. According to Guideline 2.C.ii for Site Elements, do not use privacy fences in front yards. Staff recommends that the applicant extends the 4-foot-tall front fence along the south property line past the first window bay of the south (side) elevation and installs the 6-foot-tall privacy fence in the rear yard.
- d. FENESTRATION MODIFICATIONS – The applicant has proposed to enclose two (2) door openings noted as doors B and D. Door opening B is located on the north side of the front elevation and is part of a non-original addition and does not currently feature a door. Door opening D is located on the south (side) elevation and does not currently feature a door. Guideline 6.A.i for Exterior Maintenance and Alterations states that existing windows and doors should be preserved. Avoid enlarging or diminishing to fit stock sizes or air conditioning units. Avoid filling in historic door or window openings. Avoid creating new primary entrances or window openings on the primary façade or where visible from the public right-of-way. Staff finds that the proposed door openings are likely not original to the structure. Staff finds the proposal to enclose the door openings appropriate.
- e. SITE WORK – The applicant has proposed to remove non-original concrete walkways and non-original sets of concrete steps. Guideline 5.A.i for Site Elements states that applicants should repair minor cracking, settling, or jamming along sidewalks to prevent uneven surfaces. Retain and repair historic sidewalk and walkway paving materials—often brick or concrete—in place. Additionally, the Guidelines state that portions of sidewalks or walkways that are deteriorated beyond repair should be replaced and every effort should be made to match the existing color and material. New walkways should follow the historic alignment, configuration, and width and should only be altered when absolutely necessary to accommodate the preservation of a significant tree. Staff finds that the majority of the site work and the concrete steps proposed for removal are not original to the property. Staff finds that the applicant should replace the front walkway from the porch steps to the sidewalk to match the historic width, configuration, and material.
- f. ADMINISTRATIVE APPROVAL – The applicant has proposed to install a new rear door in the empty rear door opening. This scope of work is eligible for administrative approval with an appropriate door and does not require review by the HDRC.

## **RECOMMENDATION:**

Items 1 & 2, staff recommends approval of front yard and rear privacy fence installation based on findings b through c with the following stipulations:

- i. That the applicant extends the 4-foot-tall front yard fence along the south (side) property line, past the first window bay of the south elevation based on finding c.
- ii. That the applicant installs a front yard fence that is similar in material and design to those found within the district based on finding b.

Item 3, staff recommends approval of the door enclosure based on finding d with the following stipulation:

- i. That the applicant encloses the door openings with siding to match existing in material, profile, dimension, and finish.

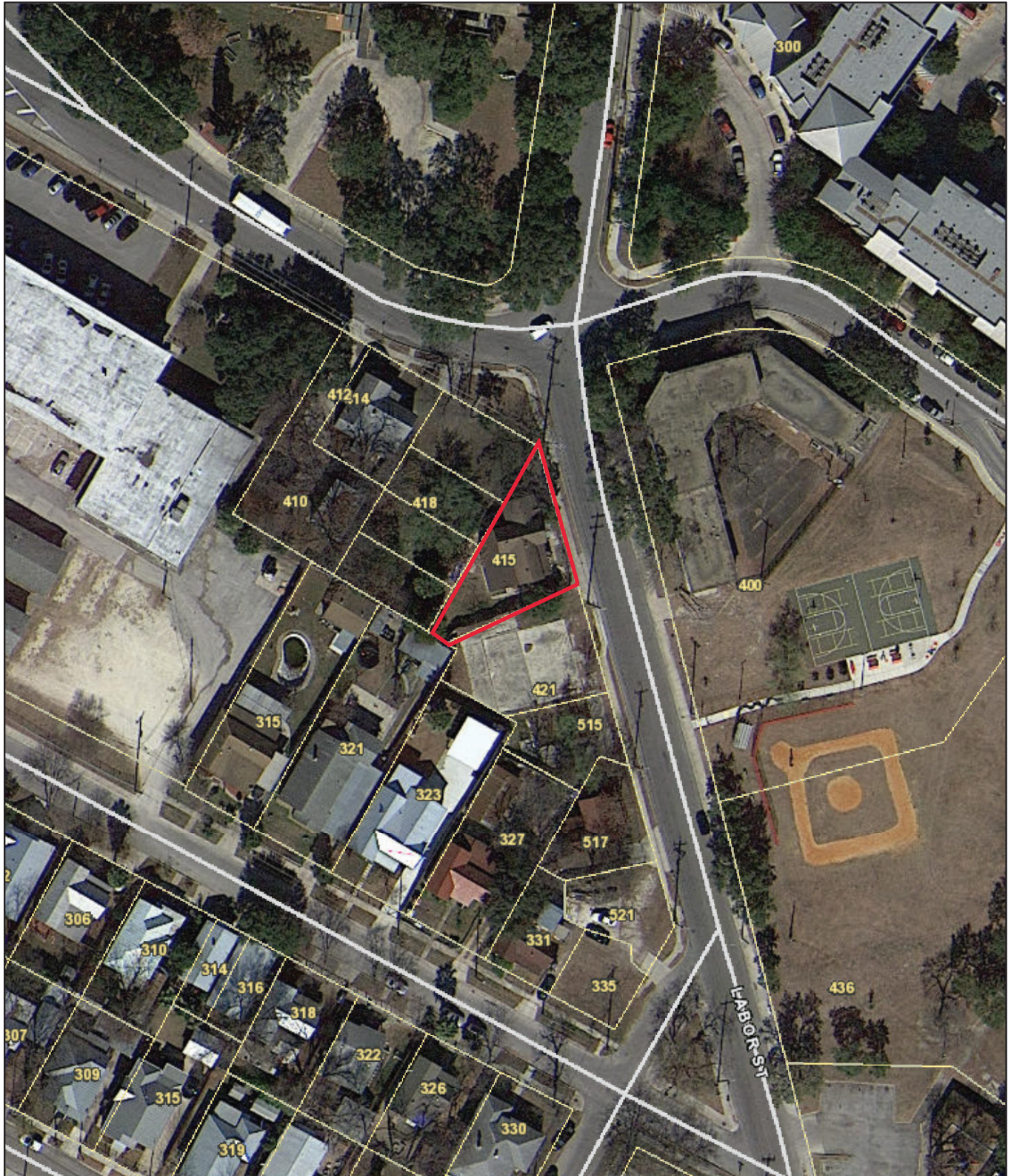
Item 4, staff recommends approval of the concrete site work and step removal based on finding e with the following stipulation:



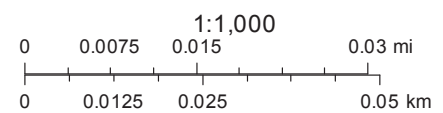
- i. That the applicant replaces the front walkway from the front porch steps to the sidewalk to match the original front walkway in alignment, configuration, width, and material, and submits a measured site plan to staff for review and approval prior to the issuance of a Certificate of Appropriateness.



# City of San Antonio One Stop



 User drawn lines





Google Maps 415 Labor St



Imagery ©2021 Google, Imagery ©2021 CNES / Airbus, Maxar Technologies, Map data ©2021 50 ft



Google Maps 415 Labor St



Imagery ©2021 Google, Map data ©2021 , Map data ©2021 20 ft



Google Maps 415 Labor St



Imagery ©2021 Google, Map data ©2021 , Map data ©2021 20 ft



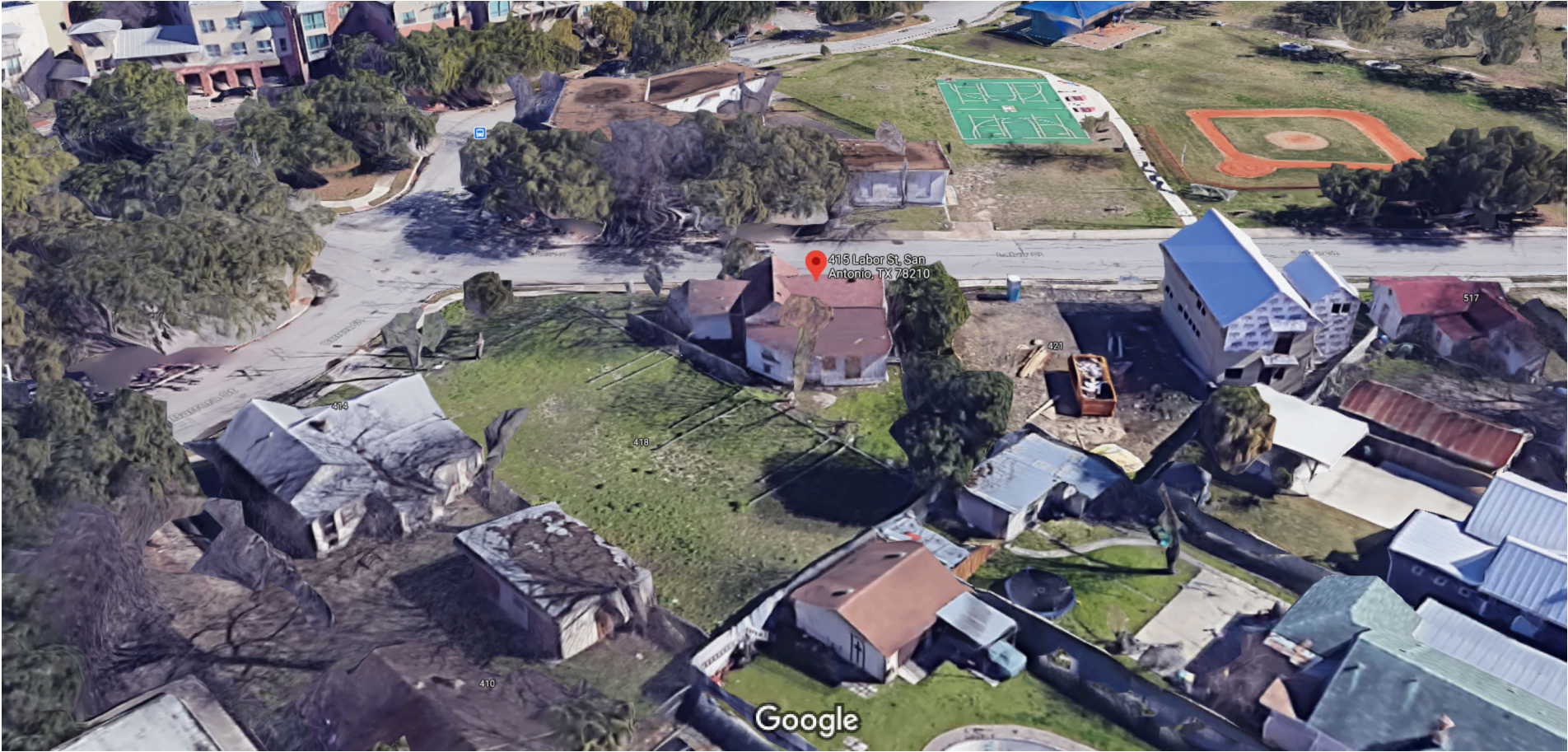
## Google Maps 415 Labor St



Imagery ©2021 Google, Map data ©2021, Map data ©2021 20 ft



Google Maps 415 Labor St



Imagery ©2021 Google, Map data ©2021 , Map data ©2021 20 ft



249

250

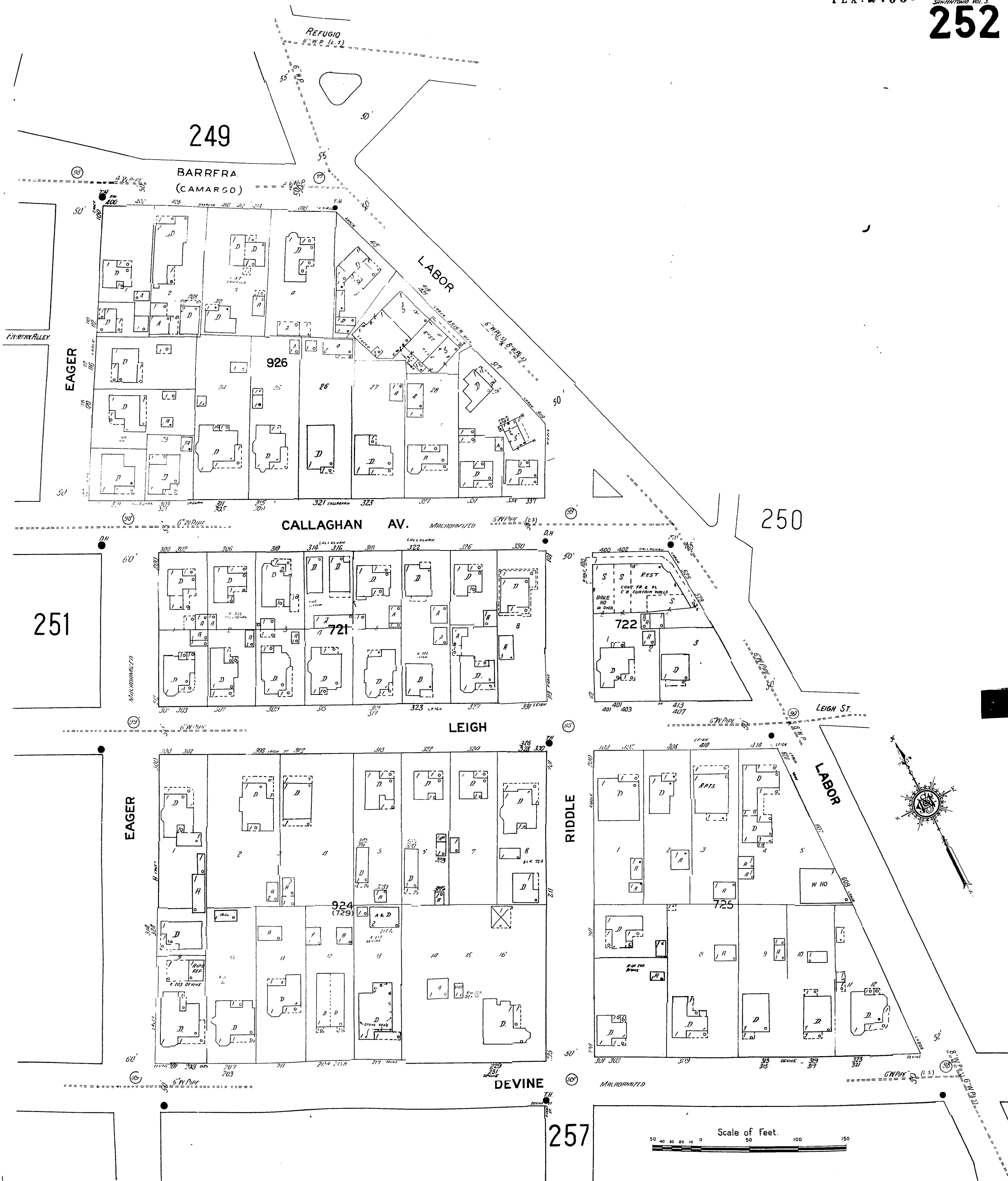
249

250

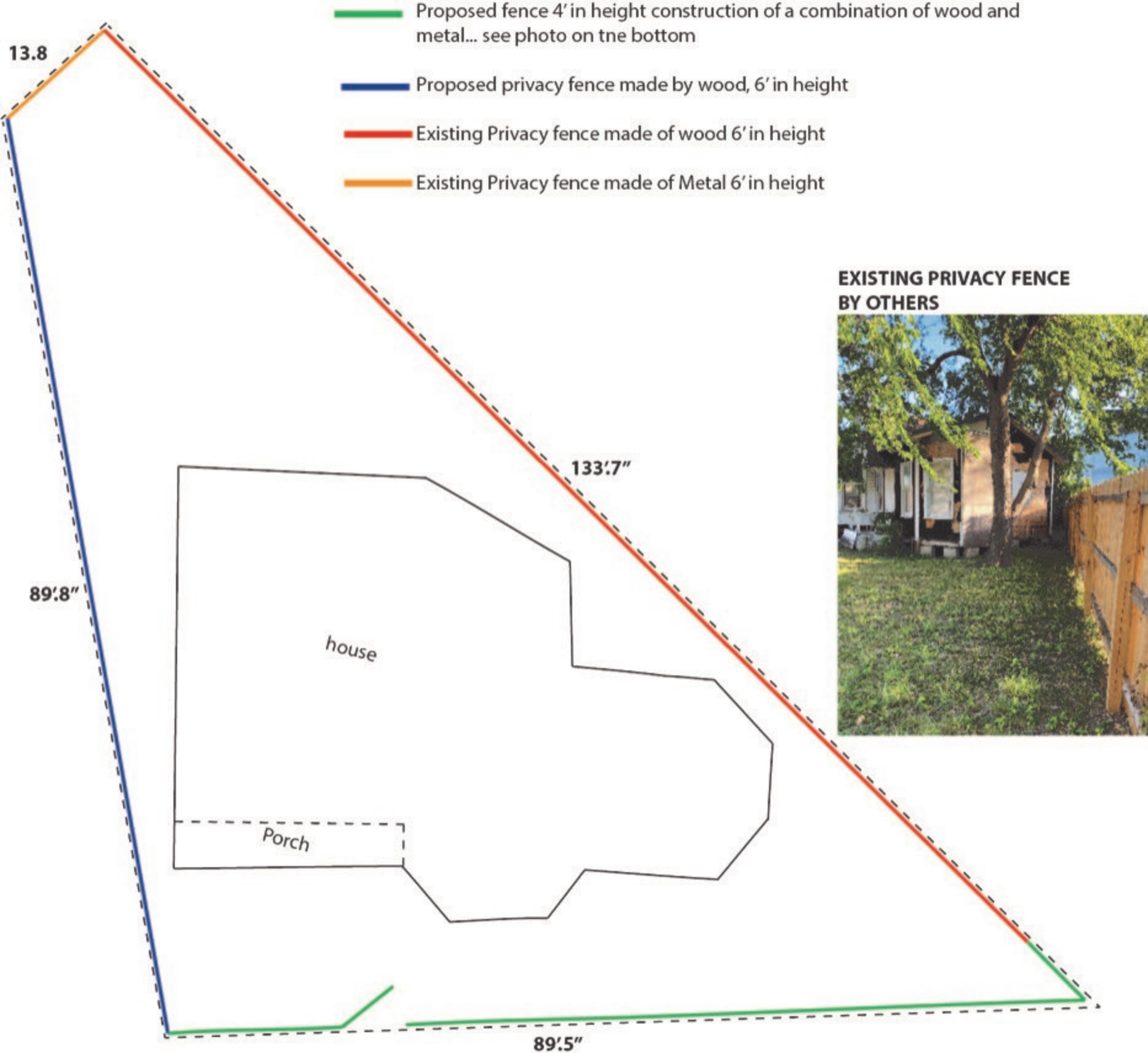
253











**EXISTING PRIVACY FENCE  
BY OTHERS**

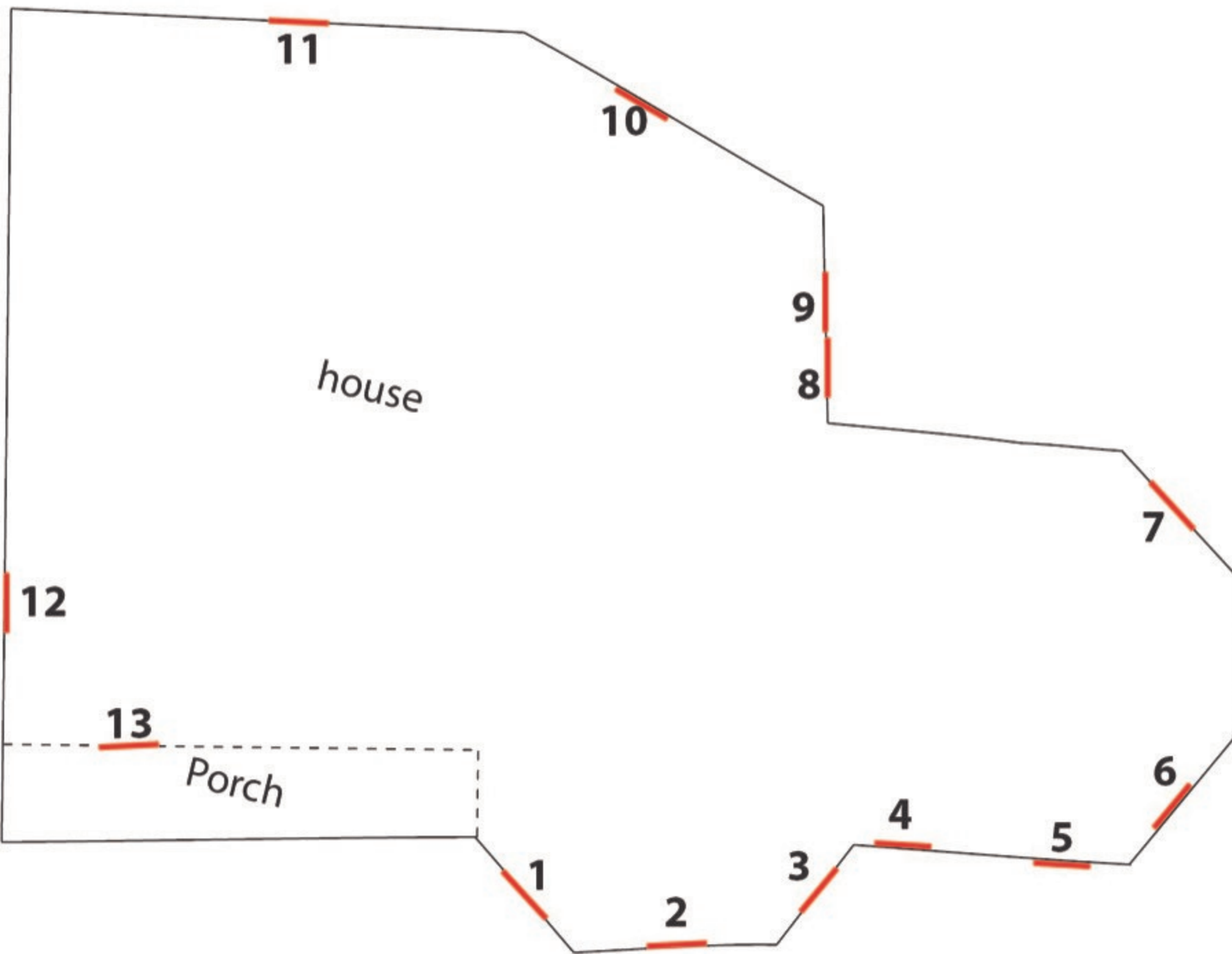


**PROPOSED FRONT FENCE**



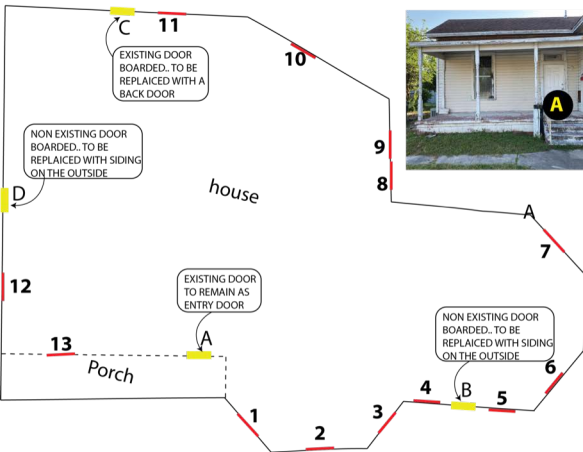


# WINDOWS SCHEDULE





# WINDOWS ///DOORS SCHEDULE



















SWMD  
CITY OF SAN ANTONIO  
SOLID WASTE  
MANAGEMENT























**PHOTOS ARE SHOWING HARDSCAPE IN NEED OF REPAIR AND CONCRETE ELEMENTS THAT ARE OBSOLETE AND SHOULD BE REMOVED ... PICS ARE ALSO SHOWING THE NEED OF SKIRTING, THE MATERIAL TO BE USED WILL BE CEMENT BOARD TO BE PAINTED IN COHERENCE WITH THE WHITE TONE OF THE HOUSE WALLS**

