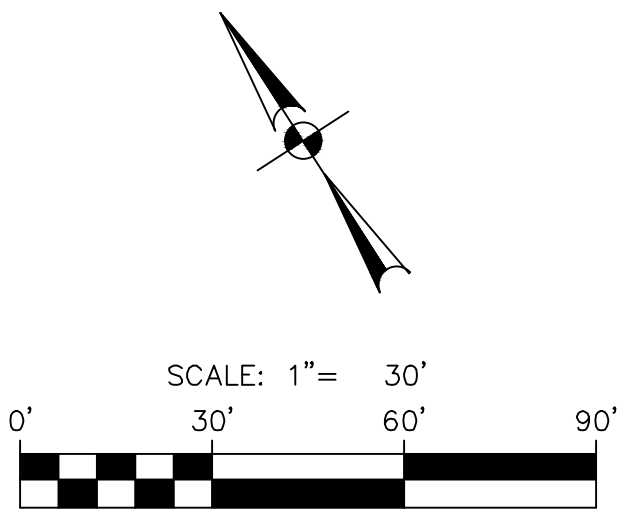
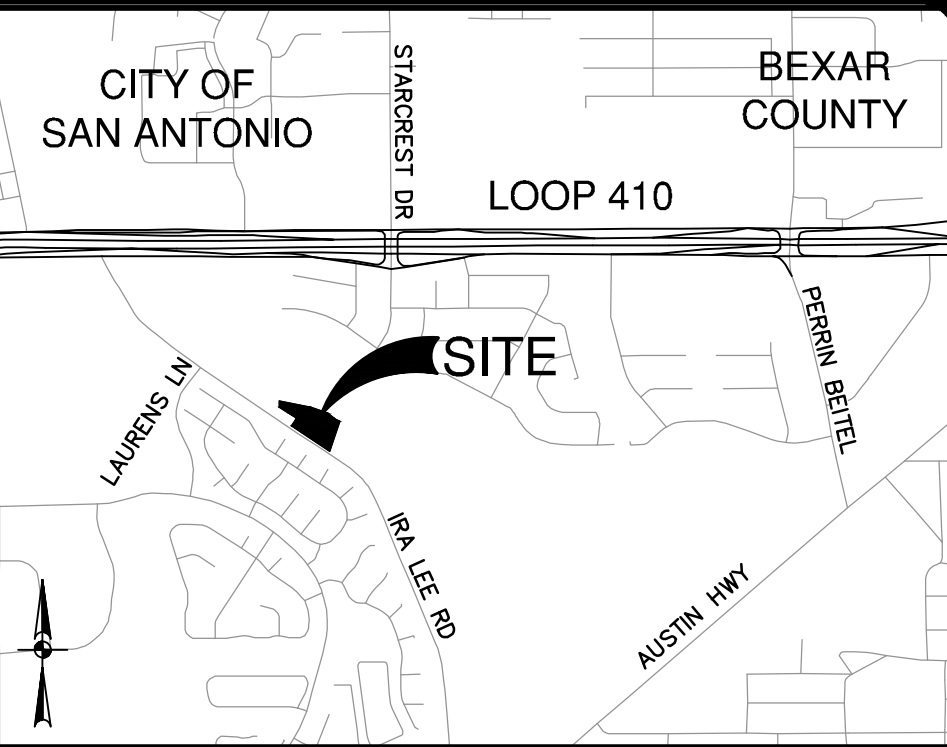
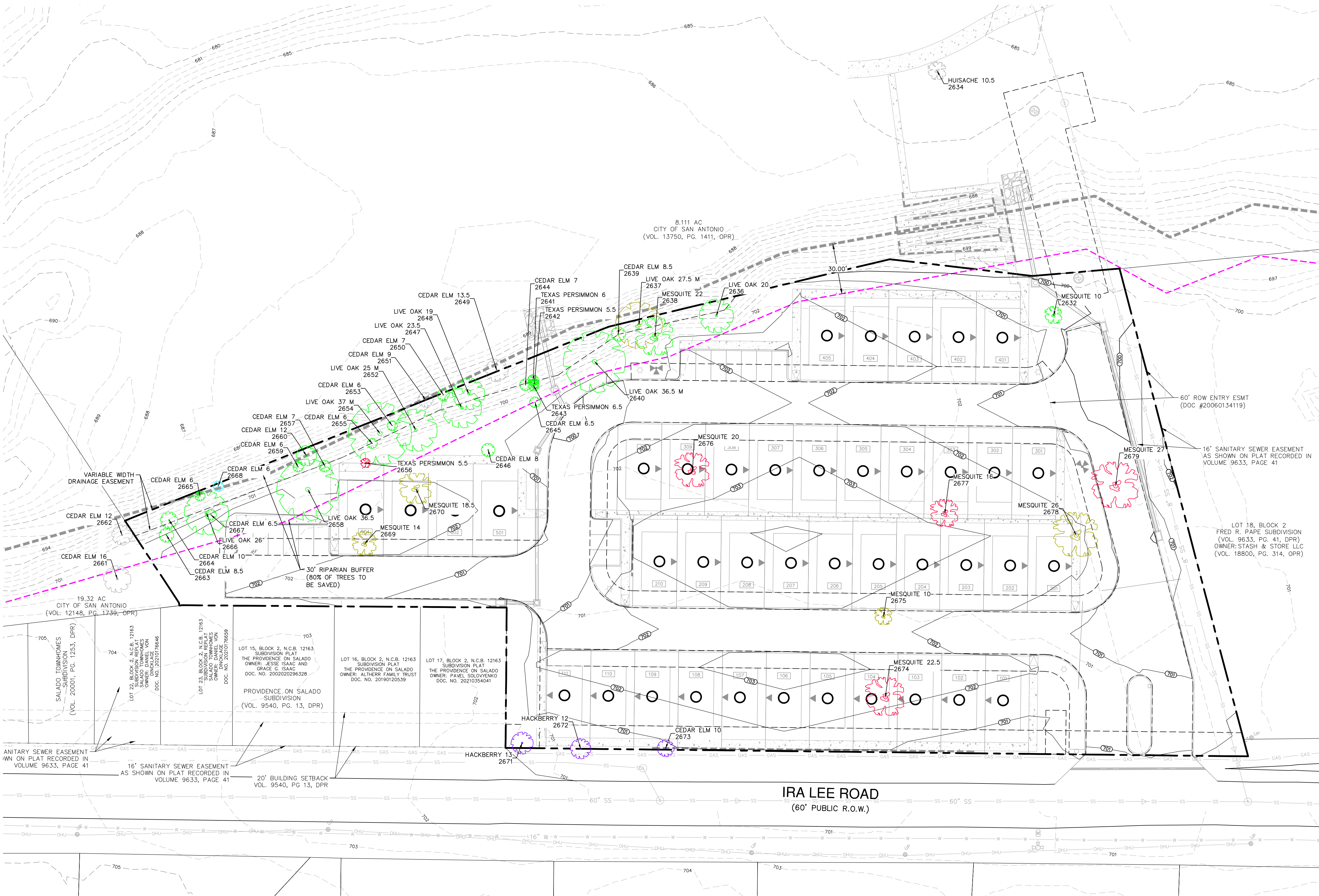


Dates: September 12, 2024, 5:12 PM - User ID: alewis
File: P:\34058\01\Design\Exhibits\Trees\241216 Residences at Salado
Creek Tree Plan.dwg

THIS DOCUMENT HAS BEEN PRODUCED FROM MATERIAL THAT WAS STORED AND/OR TRANSMITTED ELECTRONICALLY AND MAY HAVE BEEN INADVERTENTLY ALTERED. RELY ONLY ON FINAL HARDCOPY MATERIALS BEARING THE CONSULTANT'S ORIGINAL SIGNATURE AND SEAL. AERIAL IMAGERY PROVIDED BY GOOGLE/UNLESS OTHERWISE NOTED. Imagery © 2016, CAPOCO, Digital Globe, Texas Orthomography Program, USDA Farm Service Agency.



- LEGEND**
- 100-YR FEMA EFFECTIVE FLOODPLAIN
 - PROTECTED TREE TO BE REMOVED
 - PROTECTED TREE TO BE SAVED
 - PROTECTED TREE WITHIN FLOODPLAIN
 - UNPROTECTED TREE TO BE REMOVED (WITHIN EASEMENT OR ROW)
 - TREE IN DECLINE TO BE REMOVED
 - OFFSITE TREES

NO.	REVISION	DATE

**PAPE-DAWSON
ENGINEERS**
2000 HW LOOP 410 | SAN ANTONIO, TX 78213 | 210.375.9000
TEXAS ENGINEERING FIRM #470 | TEXAS SURVEYING FIRM #10028800

RESIDENCES AT SALADO CREEK
SAN ANTONIO, TEXAS
TREE PLAN

PLAT NO.	24-11800396
JOB NO.	13458-01
DATE	DEC 2024
DESIGNER	AL
CHECKED	DRAWN AL
SHEET	1 OF 3

Dates: September 12, 2024, 5:12 PM -- User ID: alewis
File: P:\34\08\01\Design\Exhibits\Trees\241216 Residences at Salado
Book Tree Plan.dwg

PROTECTED TREES
TO BE REMOVED

PROTECTED TREES TO BE REMOVED (LARGE SPECIES)			
POINT#	SPECIES	DBH(IN)	MT DIMS
2674	MESQUITE	22.5	
2676	MESQUITE	20	
2677	MESQUITE	16	
Total:		58.5	

PROTECTED HERITAGE TREES TO BE REMOVED			
POINT#	SPECIES	DBH(IN)	MT DIMS
2679	MESQUITE	27	
Total:		27	

PROTECTED TREE TO BE REMOVED (SMALL SPECIES - SENSITIVE AREAS)			
POINT #	SPECIES	DBH(IN)	MT DIMS
2656	PERS	5.5	
Total:		5.5	

TREES IN DECLINE TO BE
REMOVED

TREE IN DECLINE TO BE REMOVED			
POINT#	SPECIES	DBH(IN)	MT DIMS
2637	LIVE OAK	27.5	15.5X13.5X11
2669	MESQUITE	14	
2670	MESQUITE	18.5	
2675	MESQUITE	10	
2678	MESQUITE	26	
Total:		96	

PROTECTED TREES TO REMAIN

PROTECTED TREE TO BE SAVED (FLOODPLAIN)			
POINT#	SPECIES	DBH(IN)	MT DIMS
2668	CEDAR ELM	6	
Total:		6	

PROTECTED TREE TO BE SAVED (LARGE SPECIES)			
POINT #	SPECIES	DBH(IN)	MT DIMS
2632	MESQUITE	10	
2645	CEDAR ELM	6.5	
2646	CEDAR ELM	8	
Total:		24.5	

PROTECTED HERITAGE TO BE SAVED (SENSITIVE AREAS)			
POINT#	SPECIES	DBH(IN)	MT DIMS
2640	LIVE OAK	36.5	23 X 15 X 12
2652	LIVE OAK	25	20 X 10.5
2654	LIVE OAK	37	29 X 16
2658	LIVE OAK	36.5	
2666	LIVE OAK	26	
Total:		161	

PROTECTED TREE TO BE SAVED (LARGE SPECIES - SENSITIVE AREAS)			
POINT #	SPECIES	DBH(IN)	MT DIMS
2636	LIVE OAK	20	
2638	MESQUITE	22	
2639	CEDAR ELM	8.5	
2644	CEDAR ELM	7	
2647	LIVE OAK	23.5	
2648	LIVE OAK	19	
2650	CEDAR ELM	7	
2653	CEDAR ELM	6	
2655	CEDAR ELM	6	
2657	CEDAR ELM	7	
2659	CEDAR ELM	6	
2660	CEDAR ELM	12	
2663	CEDAR ELM	8.5	
2664	CEDAR ELM	10	
2665	CEDAR ELM	6	
2667	CEDAR ELM	6.5	
Total:		175	

PROTECTED TREE TO BE SAVED (SMALL SPECIES - SENSITIVE AREAS)			
POINT #	SPECIES	DBH(IN)	MT DIMS
2641	PERS	6	
2642	PERS	5.5	
2643	PERS	6.5	
Total:		18	

UNPROTECTED TREES
TO REMAIN

UNPROTECTED TREES TO BE REMOVED			
POINT#	SPECIES	DBH(IN)	MT DIMS
2671	HACKBERRY	13	
2672	HACKBERRY	12	
2673	CEDAR ELM	10	
Total:		35	

MITIGATION CALCULATIONS

SIGNIFICANT

LARGE SPECIES
TOTAL LARGE SPECIES
SIGNIFICANT INCHES = 24.5" PRESERVED + 58.5" REMOVED = 83"

INCHES REQUIRED TO BE SAVED = 40% REQ. PRESERVATION x 83" = 33.2"

PERCENTAGE PRESERVED = 24.5 PRESERVED / 83" TOTAL = 29.5%

MITIGATION INCHES REQUIRED = 33.2" REQUIRED – 24.5" PRESERVED = 8.7" REQUIRED

HERITAGE

TOTAL HERITAGE INCHES = 0" PRESERVED + 27" REMOVED = 27"

REQUIRED HERITAGE PRESERVATION = 27" X 100% = 27"

PERCENTAGE PRESERVED = 0" PRESERVED / 27" TOTAL = 0%

MITIGATION INCHES REQUIRED = 27" REMOVED HERITAGE * 1:1 (MESQUITE) = 27" REQUIRED

ENVIRONMENTALLY SENSITIVE

FLOODPLAIN SIGNIFICANT

TOTAL SIGNIFICANT INCHES = 6" PRESERVED + 0" REMOVED = 6"

INCHES REQUIRED TO BE SAVED = 80% REQ. PRESERVATION x 6" = 4.8"

PERCENTAGE PRESERVED = 6" PRESERVED / 6" TOTAL = 100%

FLOODPLAIN BUFFER SIGNIFICANT

LARGE SPECIES

TOTAL LARGE SPECIES
SIGNIFICANT INCHES = 175" PRESERVED + 0" REMOVED = 175"

INCHES REQUIRED TO BE SAVED = 80% REQ. PRESERVATION x 175" = 140"

PERCENTAGE PRESERVED = 175" PRESERVED / 175" TOTAL = 100%

MITIGATION INCHES REQUIRED = 140" REQUIRED – 175" PRESERVED = 35" EXCESS

SMALL SPECIES

TOTAL SMALL SPECIES
SIGNIFICANT INCHES = 18" PRESERVED + 5.5" REMOVED = 23.5"

INCHES REQUIRED TO BE SAVED = 80% REQ. PRESERVATION x 23.5" = 18.8"

PERCENTAGE PRESERVED = 18" PRESERVED / 23.5" TOTAL = 76.6%

MITIGATION INCHES REQUIRED = 18.8" REQUIRED – 18" PRESERVED = 0.8" REQUIRED

FLOODPLAIN BUFFER HERITAGE

TOTAL HERITAGE INCHES = 161" PRESERVED + 0" REMOVED = 161"

REQUIRED HERITAGE PRESERVATION = 161" X 100% = 161"

PERCENTAGE PRESERVED = 161" PRESERVED / 161" TOTAL = 100%

MITIGATION INCHES REQUIRED = 0" REMOVED HERITAGE * 3:1 = 0"

MITIGATION

TOTAL MITIGATION REQUIRED = 8.7" (SIGNIFICANT) + 27" (HERITAGE) – 35 EXCESS (LARGE SENSITIVE)
+ 0.8 REQUIRED (SMALL SENSITIVE) = 1.5 REQUIRED

INCHES FROM PLANTING = 14 TREES @ 1.5" = 21" PLANTING

TOTAL MITIGATION = 21" PLANTING – 1.5" REQUIRED = 19.5" EXCESS

PROPOSED TREE CANOPY

MULTIFAMILY:

TOTAL PROJECT AREA = 3.0 ACRES

REQUIRED TREE CANOPY = 25% X 3.0 = 0.75 ACRES

EXISTING TREE CANOPY PRESERVED = TREE CANOPY PER EXISTING TREE = 28 TREES

- PRESERVED TREE CANOPY PER MINIMUM PRESERVATION REQUIREMENTS

(LARGE SHADE) = 24 TREES * 875 SQUARE FEET OF CANOPY PER TREE = 21,000 SF = 0.48 ACRES

(SMALL SHADE) = 5 TREES * 275 SQUARE FEET OF CANOPY PER TREE = 1,375 SF = 0.03 ACRES

TREE CANOPY PER PLANTED TREE = 875 SQUARE FEET X 90% = 787.5 SQUARE FEET OF CANOPY PER TREE

PROPOSED TREE CANOPY PLANTED = 14 TREES * 787.5 SQUARE FEET OF SHADE/TREE = 11,025 SF = 0.25 ACRES

PRESERVED CANOPY + PROPOSED CANOPY = 0.48 + 0.03 + 0.25 = 0.76 ACRES

PROPOSED TREE CANOPY COVERAGE = 0.76/3.0 ACRES = 25.3% (25% REQUIRED)

TREE PRESERVATION NOTES:

- ALL EXISTING TREES DENOTED ON THIS PLAN TO BE PRESERVED AS SHOWN AND PROTECTED AT THE ROOT PROTECTED ZONE (RPZ). THE RPZ SHALL BE DETERMINED BY TREE SIZE (RECOMMENDED 1' RADIUS FROM TRUNK FOR EVERY 1" DIAMETER OF TRUNK AT 4.5' FROM GROUND) WITH A MINIMUM 5' DIAMETER FROM THE TRUNK.
- A (CHAIN LINK OR ORANGE MESH FENCE) BARRIER AROUND THE RPZ SHALL BE ERECTED AND MAINTAINED UNTIL CONSTRUCTION IS COMPLETED.
- RPZ SHALL BE SUSTAINED IN A NATURAL STATE AND SHALL BE FREE FROM VEHICULAR OR MECHANICAL TRAFFIC; NO FILL, EQUIPMENT, LIQUIDS, OR CONSTRUCTION DEBRIS SHALL BE PLACED INSIDE THE PROTECTIVE ZONE.
- THE RPZ SHALL BE COVERED WITH MULCH TO REDUCE MOISTURE STRESS.
- ANY DAMAGE DONE TO EXISTING TREE CROWNS OR ROOT SYSTEMS SHALL BE REPAIRED IMMEDIATELY. ALL WOUNDS TO TREES WILL BE PAINTED WITH PRUNING PAINT WITHIN 30 MINUTES AFTER DAMAGE. ROOTS EXPOSED DURING CONSTRUCTION OPERATIONS WILL BE CUT CLEANLY.
- THE PROPOSED FINISHED GRADE AND ELEVATION OF LAND WITHIN THE ROOT PROTECTION ZONE OF ANY TREES TO BE PRESERVED SHALL NOT BE RAISED OR LOWERED MORE THAN 3". WELLING AND RETAINING METHODS ARE ALLOWED OUTSIDE THE RPZ.
- THE RPZ SHALL REMAIN PERVIOUS, I.E. GROUNDCOVER OR TURF AT COMPLETION OF LANDSCAPE DESIGN.
- ALL BROKEN BRANCHES AND EXPOSED ROOTS TWO (2) INCHES IN DIAMETER OR GREATER OF SIGNIFICANT HERITAGE, OR MITIGATION TREES SHALL BE CUT CLEANLY AND IN ACCORDANCE WITH ANSI-300 STANDARDS. IN THE CASE OF OAK SPECIES, IN ORDER TO PREVENT INFECTION BY OAK WILT SPORES, WOUNDS MUST BE PAINTED WITH AN ACCEPTABLE WOUND DRESSING WITHIN THIRTY (30) MINUTES.

GENERAL NOTES:

- 2023 TREE ORDINANCE WITH TREE SURVEY – SIGNIFICANT TREES WITHIN EASEMENTS ARE UNPROTECTED, WITH THE EXCEPTION OF TREES WITHIN THE 100-YR FEMA FLOODPLAIN AND 30 FT FLOODPLAIN BUFFER. ALL SIGNIFICANT TREES WITHIN THE FLOODPLAIN AND BUFFER ARE PROTECTED.
- 2023 TREE ORDINANCE WITH TREE SURVEY – 100% HERITAGE TREES WITHIN EASEMENT ARE PROTECTED AND SHALL BE MITIGATED AT 3:1 RATIO.
- TREES SHOWN ARE THOSE FOUND BY FIELD SURVEYS DATED 09/11/2024.
- TREES LOCATED OUTSIDE THE LIMITS OF THE TREE SURVEY WILL REMAIN UNDISTURBED.
- TREES WITH A MINIMUM DIAMETER OF 1.5" ARE TO BE PLANTED.



2000 HW LOOP 410 | SAN ANTONIO, TX 78213 | 210.375.9000
TEXAS ENGINEERING FIRM #470 | TEXAS SURVEYING FIRM #10028900

RESIDENCES AT SALADO CREEK
SAN ANTONIO, TEXAS

TREE PLAN

PLAT NO.	24-11800396
JOB NO.	13458-01
DATE	DEC 2024
DESIGNER	AL
CHECKED	DRAWN AL
SHEET	2 OF 3

