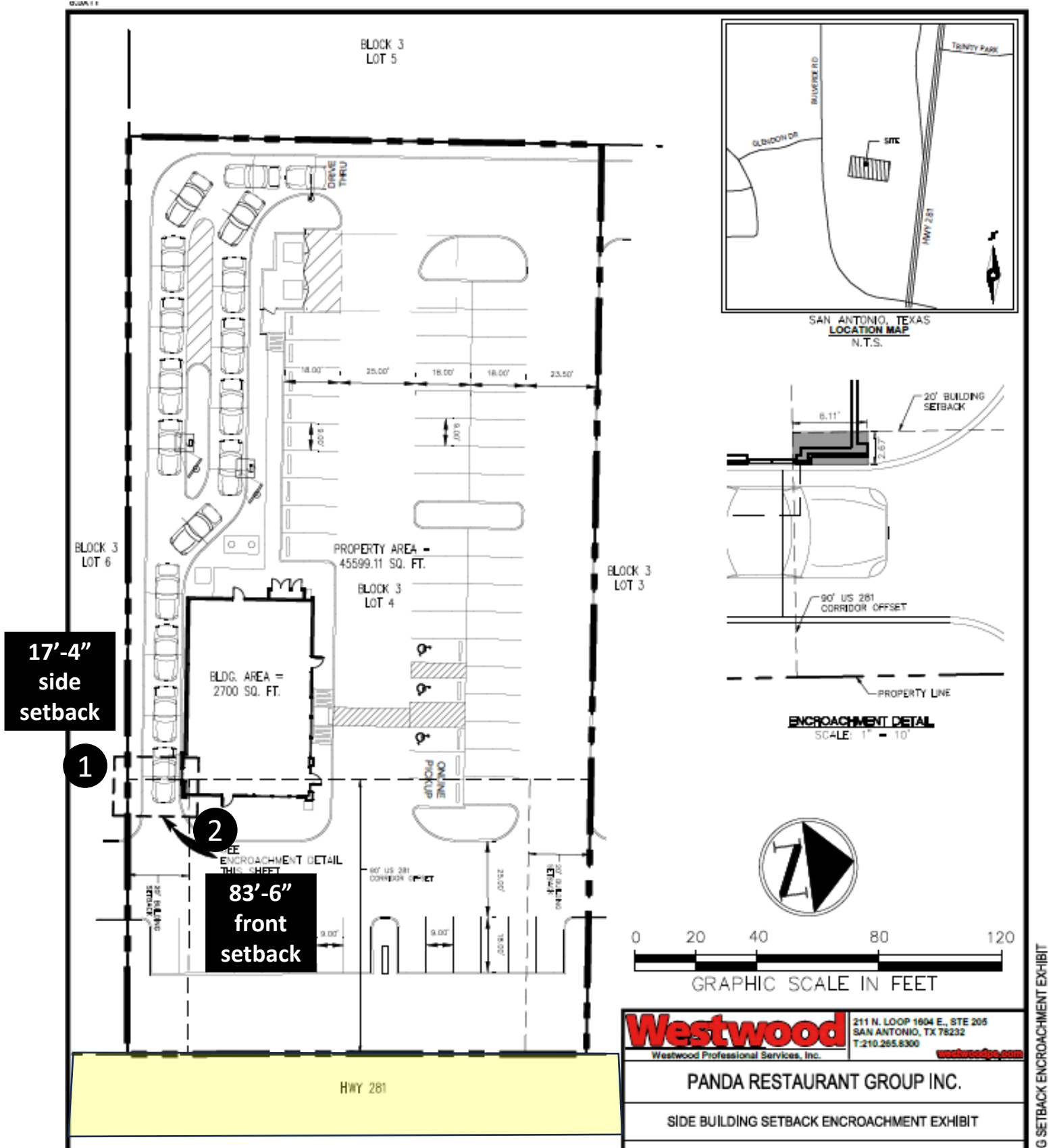


Board of Adjustment
Notification Plan for
Case No A-24-10300241



- San Antonio City Limits ■■■■
- Subject Property ■■■■
- 200' Notification Boundary - - - -
- Council District: 9/OCL

*NOT TO SCALE,
 FOR ILLUSTRATIVE PURPOSES ONLY*
 Development Services Department
 City of San Antonio



1) a 2'-8" variance from the minimum 20' side setback to allow a 17'-4" US 281 North Gateway Corridor side setback on the southern property line, and 2) a 6'-6" variance from the minimum 90' front setback to allow an 83'-6" US 281 North Gateway Corridor front setback.

BOA-24-10300241
26782 Bulverde Road



Subject Property



BOA-24-10300241

Surrounding Area



Surrounding Area



BOA-24-10300241

Surrounding Area



Surrounding Area

