



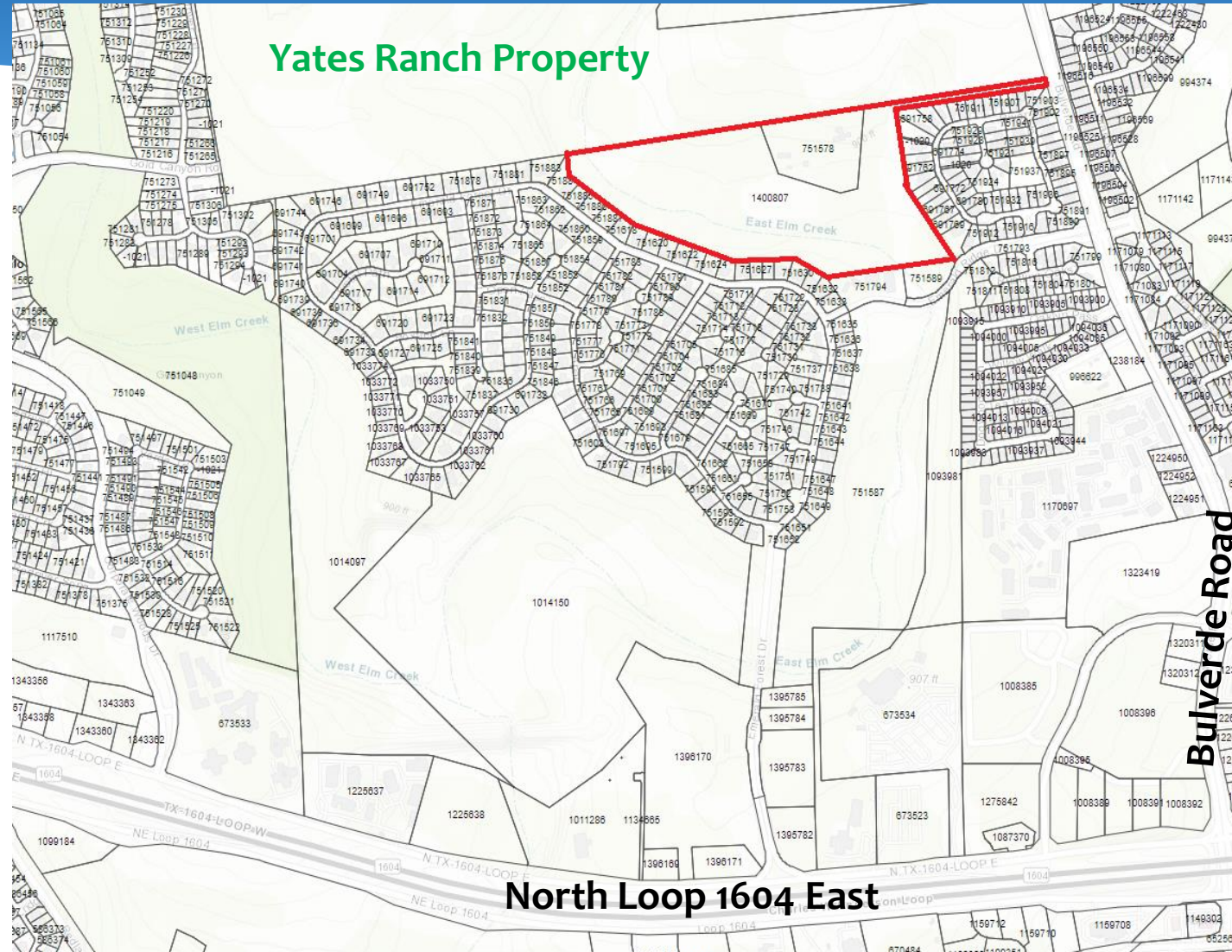
City of San Antonio

Edwards Aquifer

Protection Program

Trevino Property
Harrison Ranch

Trevino Property (~39 acres) Bexar County





Trevino Property (~39 acres) Bexar County

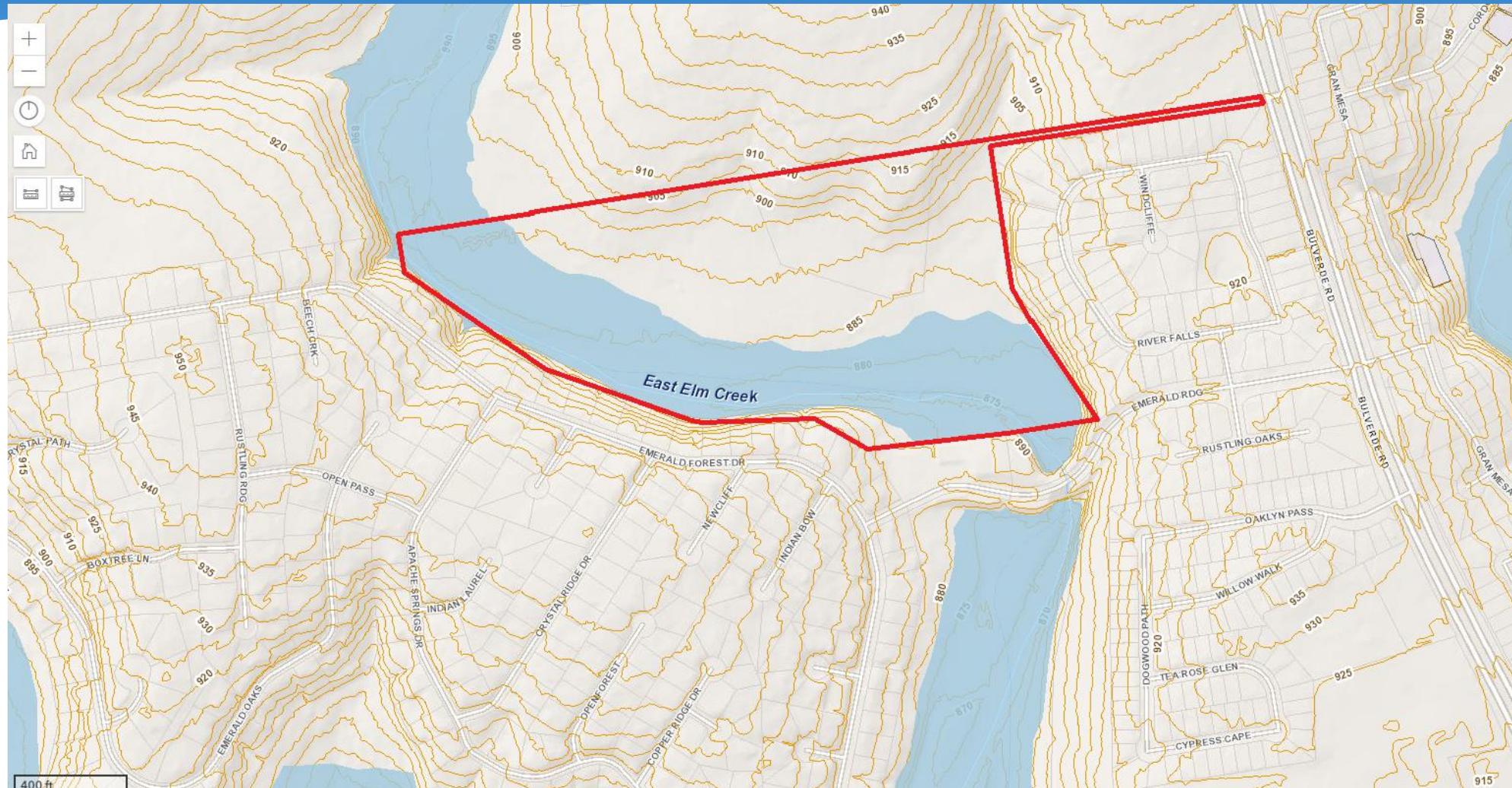
- ~39 acres
- 100% EARZ
- Top 30% SET
- Contiguous with Yates Ranch property
- Owners seeking fee simple sale
- **Requesting Stage 1 consideration**



Trevino Property (~39 acres) Bexar County



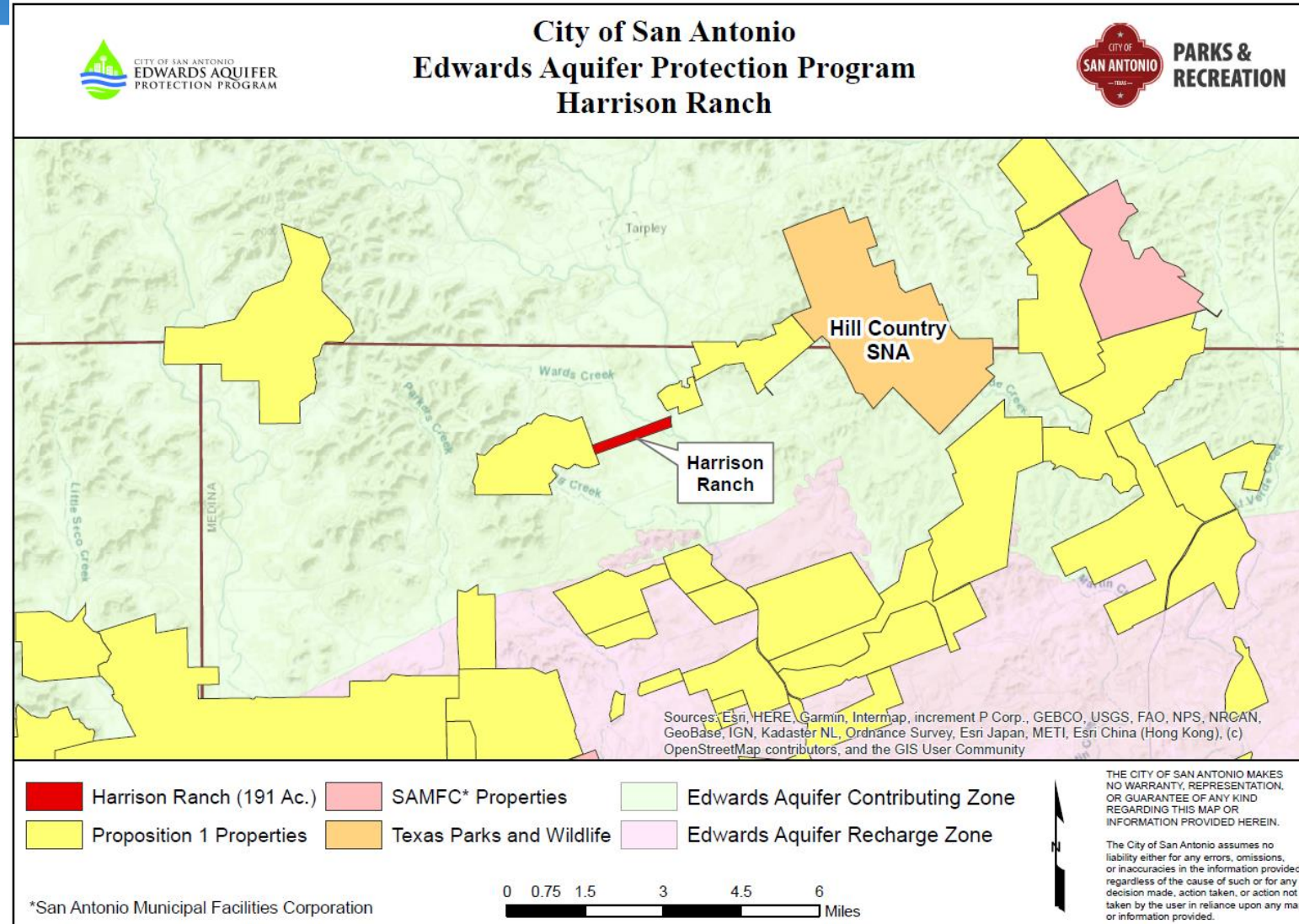
Trevino Property (~39 acres) Bexar County



Trevino Property (~39 acres) Bexar County



Harrison Ranch (~191 acres) Medina County





Harrison Ranch (~191 acres) Medina County

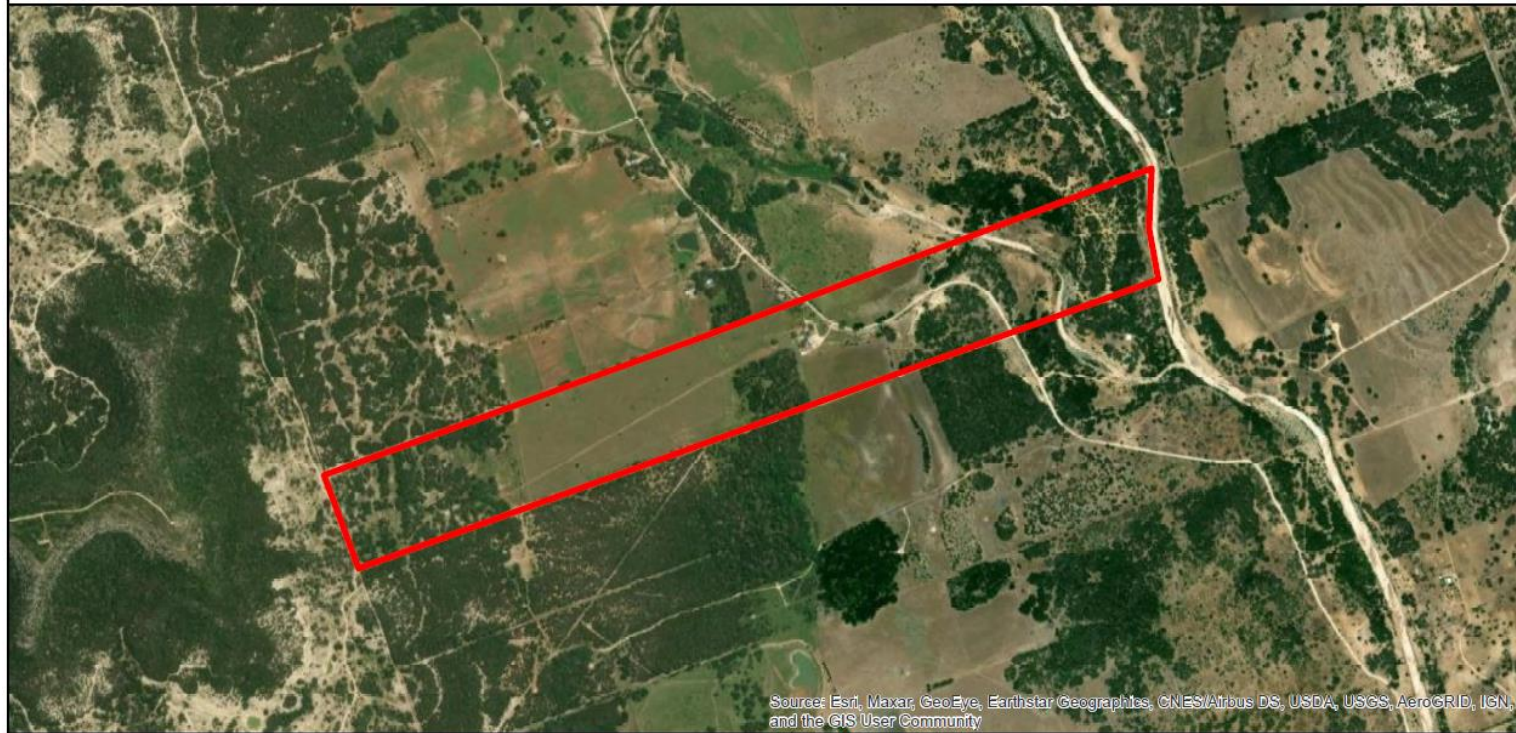
- 100% EACZ
- Top 20% SET Model
- Borders Hondo Creek
- Owner also desires to acquire and place CE on adjacent 209 acres; would connect Monier Ranch and Providence Springs Ranch
- **Requesting Stage 1 consideration**



Harrison Ranch (~191 acres) Medina County



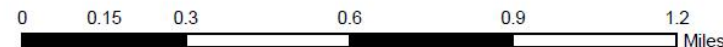
City of San Antonio Edwards Aquifer Protection Program Harrison Ranch - Aerial View



Source: Esri, Maxar, GeoEye, Earthstar Geographics, CNES/Airbus DS, USDA, USGS, AeroGRID, IGN, and the GIS User Community



Harrison Ranch (191 Ac.)



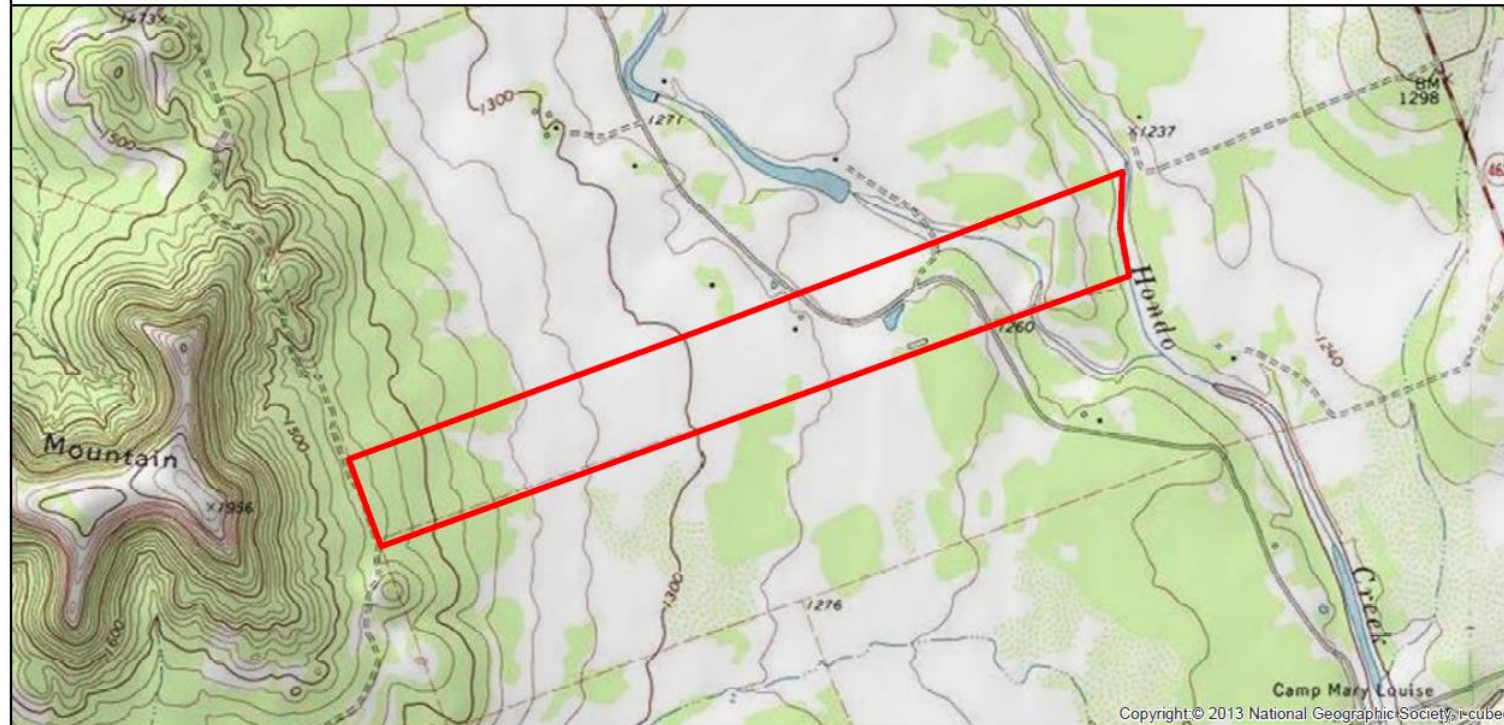
THE CITY OF SAN ANTONIO MAKES NO WARRANTY, REPRESENTATION, OR GUARANTEE OF ANY KIND REGARDING THIS MAP OR INFORMATION PROVIDED HEREIN.

The City of San Antonio assumes no liability either for any errors, omissions, or inaccuracies in the information provided regardless of the cause of such or for any decision made, action taken, or action not taken by the user in reliance upon any maps or information provided.

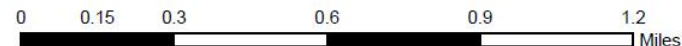
Harrison Ranch (~191 acres) Medina County



City of San Antonio Edwards Aquifer Protection Program Harrison Ranch - Topo View



Harrison Ranch (191 Ac.)



THE CITY OF SAN ANTONIO MAKES
NO WARRANTY, REPRESENTATION,
OR GUARANTEE OF ANY KIND
REGARDING THIS MAP OR
INFORMATION PROVIDED HEREIN.

The City of San Antonio assumes no
liability either for any errors, omissions,
or inaccuracies in the information provided
regardless of the cause of such or for any
decision made, action taken, or action not
taken by the user in reliance upon any maps
or information provided.

Harrison Ranch (~191 acres) Medina County

