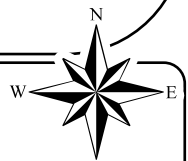


Data Source: City of San Antonio Enterprise GIS, Bexar Metro 911, Bexar Appraisal District
 This Geographic Information System Product, received from The City of San Antonio is provided "as is" without warranty of any kind, and the City of San Antonio expressly disclaims all known and implied warranties, including but not limited to the implied warranties of merchantability and fitness for a particular purpose. The City of San Antonio does not warrant, guarantee, or make any representation regarding the use, or the results of the use, of the information provided to you by the City of San Antonio in terms of correctness, accuracy, reliability, timeliness or otherwise. The entire risk as to the results and performance of any information disclosed from the City of San Antonio is entirely assumed by the recipient.
 *Please contact the responsible City of San Antonio Department for specific determinations.
 Map Created by: Gustavo Gutierrez
 Map Creation Date: 12/6/2024
 Map File Location: \\scomonimisc29\GIS\Plan5\plan_1b\Archived\Neighborhoods
 Land_Use\Amendments\Amend_2411600054_HeritageSouth_B&W.mxd
 PDF Filename: 24080G

- | | |
|--------------------------|----------------------|
| 200' Notification Area | Agricultural |
| Proposed Land Use Change | Community Commercial |
| Low Density Residential | Industrial |
| High Density Residential | Parks/Open Space |



0 350 700 Feet

United Southwest Community Plan Proposed Plan Amendment 2411600096 Area

City of San Antonio
 Development Services
 Department

Amin Tohmaz, PE, CBO

CRR Morton Development and
 Business Services Center
 PO Box 859595
 San Antonio, TX 78283

