



Bible Study Fellowship Property
Montell Summit Ranch

Bible Study Fellowship Property (~281 acres) Bexar County



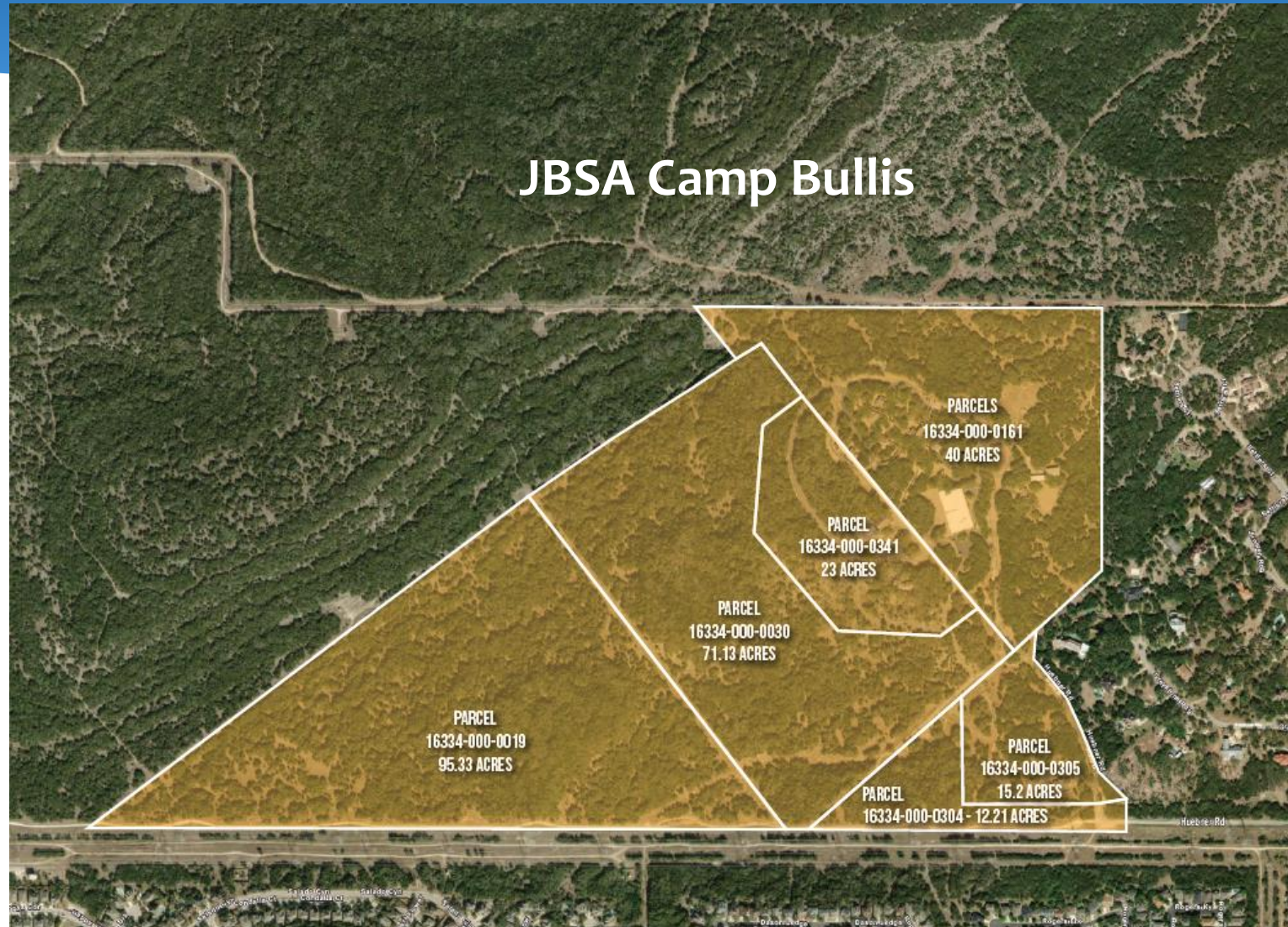


Bible Study Fellowship Property (~281 acres) Bexar County

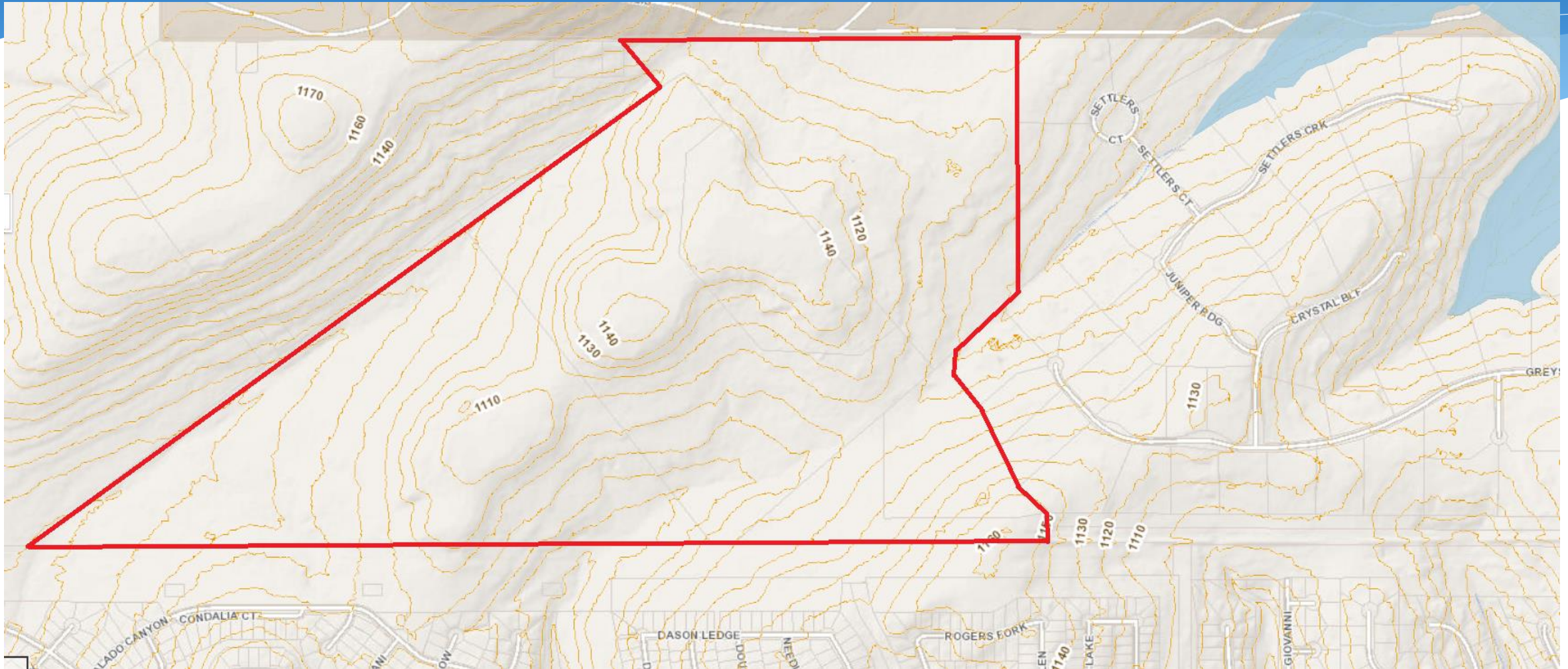
- 100% EARZ
- Top 20% SET Model
- Adjacent to JBSA Camp Bullis
- Owners seeking fee simple sale & actively on market
- 21,000 sq ft facility
- Compatible Lands Foundation (REPI), Great Springs Project and Bexar County are potential partners
- **Requesting Stage 1 consideration**



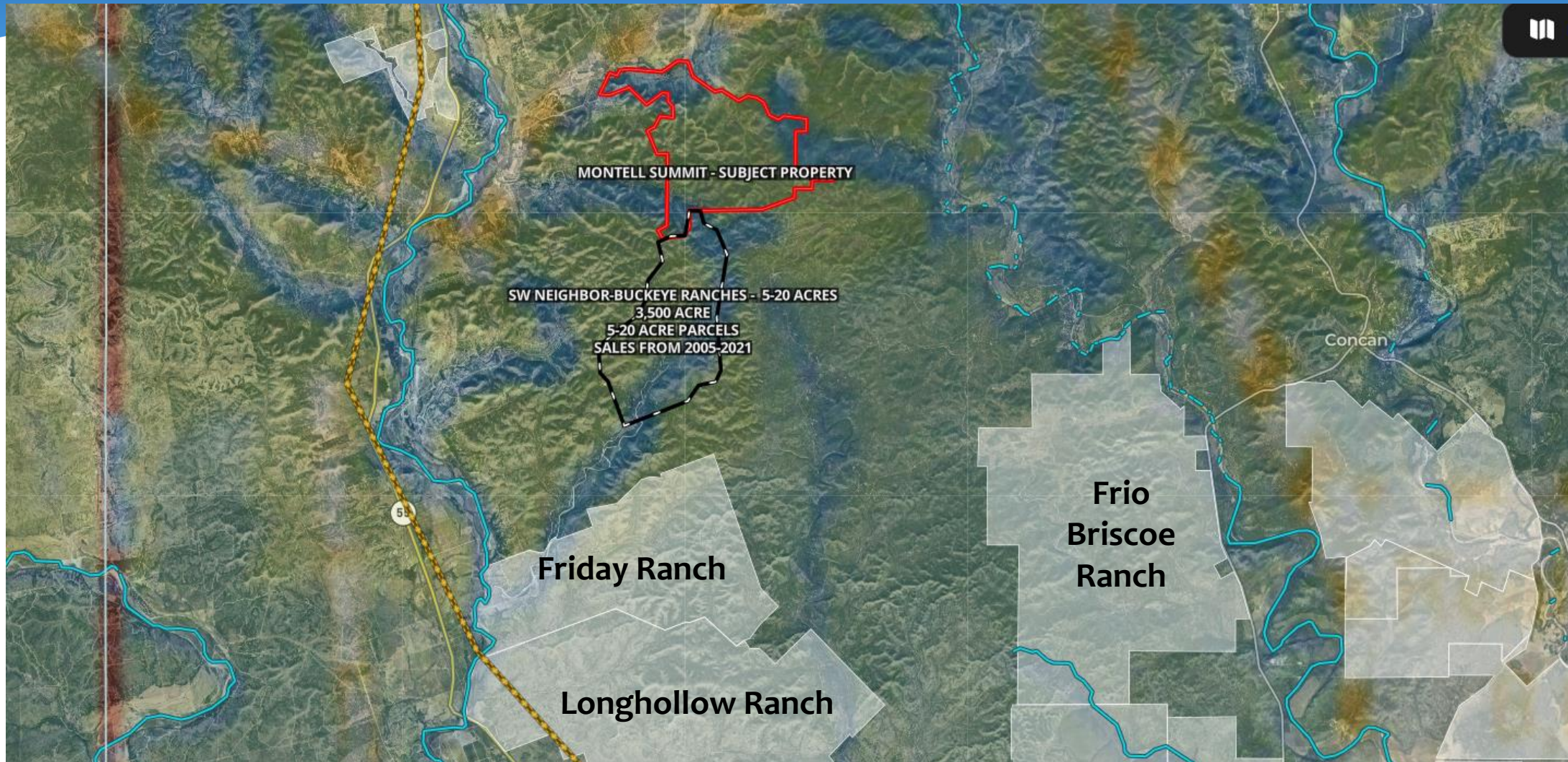
Bible Study Fellowship Property (~281 acres) Bexar County



Bible Study Fellowship Property (~281 acres) Bexar County



Montell Summit Ranch (~4,000 acres) Uvalde County

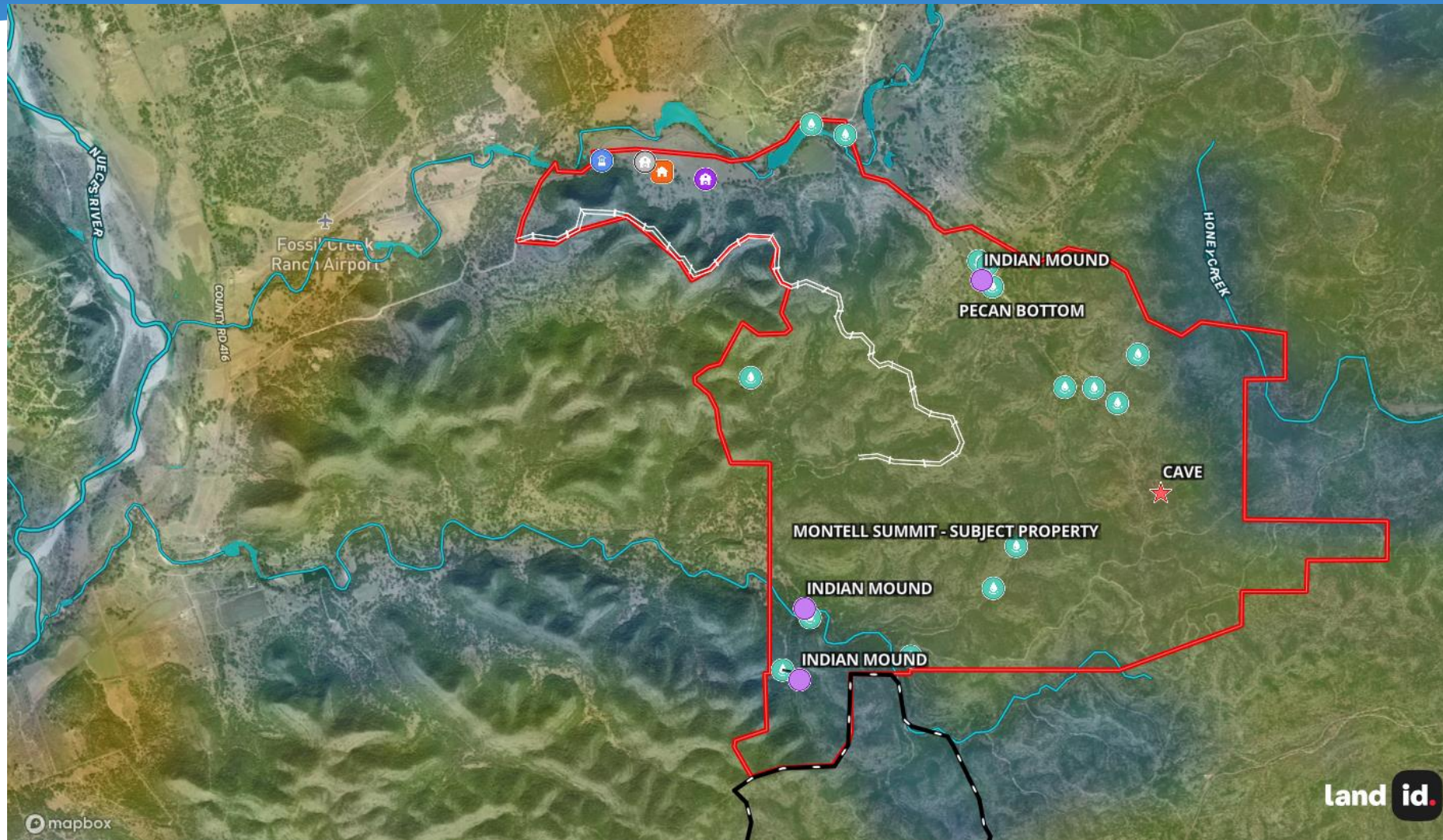


Montell Summit Ranch (~4,000 acres) Uvalde County

- 100% EACZ
- Top 30% SET Model
- Located north of Friday Ranch CE
- Owners seeking CE
- Supportive of soil improvement and infiltration research projects
- **Requesting Stage 1 consideration**



Montell Summit Ranch (~4,000 acres) Uvalde County



Montell Summit Ranch (~4,000 acres) Uvalde County

