



Edwards Aquifer Protection Program Conservation Easement Acquisition

City Council

Item # 23

March 7, 2024

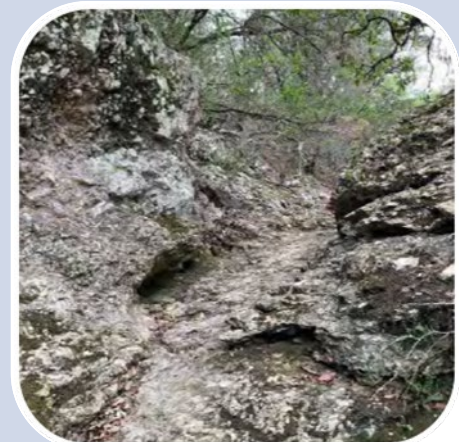
Parks and Recreation Department

Conservation Easement Acquisition

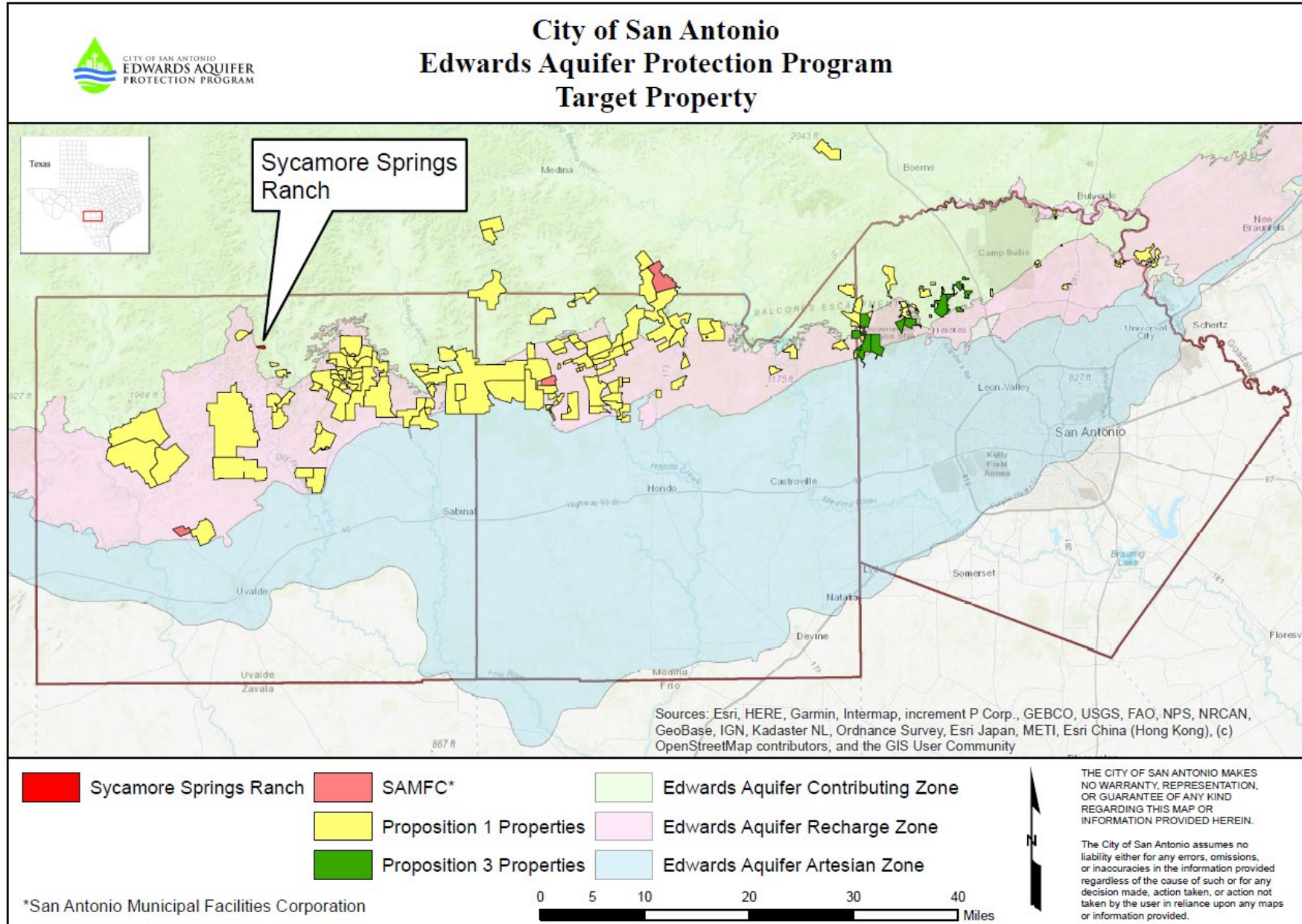
Property	County	Acres	Cost
Sycamore Springs Ranch	Uvalde	112.11	\$420,403.36

Acquisition Benefits

- Property located over the Edwards Aquifer Contributing Zone in Uvalde County
- Important recharge features on property
- High water quantity and high water quality benefits
- Results in increase of 112.11 acres



Total Land Protected = 182,222 acres



Program Status

- 182,334 acres protected with approval of today's proposed acquisitions
- Propositions 1 and 3 sales tax fully expended
- 10-year, \$100M acquisition program approved in 2020 under SAMFC
 - \$30M in debt issued in August 2023 for FY 2023 – 2025 acquisitions
 - \$9.3M expended to date to protect 3,971 acres

Recommendation

- Staff recommends approval