



**CITY OF SAN ANTONIO**  
***Finance Department, Procurement Division***

FORMAL INVITATION FOR BID ("IFB") NO.: 6100018098

MEDIUM AND HEAVY-DUTY TRUCKS

Date Issued: MAY 29, 2024

**BIDS MUST BE RECEIVED NO LATER THAN:**  
**2:00 PM, CENTRAL TIME, JUNE 26, 2024**

Bids may be submitted by any of the following means:

**Electronic submission through the Portal**

**\*Bid submissions will only be accepted electronically\***

Bid Bond: None      Performance Bond: None      Payment Bond: None      Other: None

See Supplemental Terms & Conditions for information on these requirements.

Affirmative Procurement Initiative: None      DBE / ACDBE Requirements: None

See Instructions for Bidders and Attachments sections for more information on these requirements.

Pre-Submittal Conference \* YES

**\*A Pre-Submittal Conference is scheduled, for June 4, 2024, at 10:00 a.m. Central Time.** The Pre-Submittal Conference will be held via WebEx meeting. Prospective Respondents may join the WebEx using the following instructions:

**WebEx Call-in: 1-415-655-0001**

**Meeting Number (Access Code): 2631 949 6802**

**Meeting Password: # COSA**

**WebEx Link:** <https://sanantonio.webex.com/sanantonio/j.php?MTID=m979b5c7279ae52fe7aec48cfb17fd14>

Staff Contact Person:

Jody De La Rosa,

Procurement Specialist II,

Email: [jody.delarosa@sanantonio.gov](mailto:jody.delarosa@sanantonio.gov)

Phone Number: 210-207-0543

## 002 - TABLE OF CONTENTS

002 - TABLE OF CONTENTS .....	2
003 - INSTRUCTIONS FOR BIDDERS .....	3
004 - SPECIFICATIONS / SCOPE OF SERVICES .....	9
005 - SUPPLEMENTAL TERMS & CONDITIONS .....	43
006 - GENERAL TERMS & CONDITIONS .....	47
007 - SIGNATURE PAGE .....	53
008 - STANDARD DEFINITIONS .....	54
009 - ATTACHMENTS .....	56

|

## 003 - INSTRUCTIONS FOR BIDDERS

### Submission of Bids.

#### **\*Bid submissions will only be accepted electronically\***

Submission of Electronic Bids. Submit one bid electronically by the due date provided on the Cover Page. All times stated herein are Central Time. Any bid or modification received after the time and date stated on the Cover Page shall be rejected. All forms in this solicitation which require a signature must have a signature affixed thereto, either by manually signing the document, prior to scanning it and uploading it with your submission, or affixing it electronically.

#### **Bids sent to City by facsimile or email shall be rejected.**

Modified Bids. Bids may be modified provided such modifications are received prior to the time and date set for submission of bids, and submitted in the same manner as original bids "**electronically**". Electronic bids, a modified bid will automatically replace a prior bid submission. See below for information on submitting Alternate Bids.

City shall not be responsible for lost or misdirected bids or modifications.

Electronic bids, Bidder's electronic submission, with accompanying affirmations, constitutes a binding signature for all purposes.

Bidders are cautioned that they are responsible for the security of their log on ID and password, since unauthorized use could result in Bidder's being held liable for the submission.

Certified Vendor Registration Form. If Bidder has not completed City's Certified Vendor Registration (CVR) Form, Bidder is required to do so prior to the due date for submission of bids. The CVR form may be accessed at: <http://www.sanantonio.gov/purchasing/>. Bidders must identify the correct name of the entity that will be providing the goods and/or services under the contract. No nicknames, abbreviations (unless part of the legal title), shortened or short-hand names will be accepted in place of the full, true, and correct legal name of the entity.

Alternate Bids. Alternate bids may be allowed at the sole discretion of City.

Electronic Alternate Bids Submitted Through the Portal. All alternate bids are recorded with original bids when submitted electronically.

Catalog Pricing. (This section applies to bids using catalog pricing.)

The bid will be based on manufacturer's latest dated price list(s). Said price list(s) must denote the manufacturer, latest effective date, and price schedule.

Bidders shall be responsible for providing one copy of the manufacturer's catalog for each manufacturer for which a proposal is submitted. Respondent shall provide said catalog at the time of submission of its proposal. Manufacturers' catalogs may be submitted in any of the following formats: paper copy, flash drive, or CD ROM. Catalogs shall be mailed to the Finance Department, Procurement Division, P.O. Box 839966, San Antonio, Texas 78283-3966 prior to bid opening. Bidder shall submit a PDF file for proposals submitted electronically.

Bidders may submit price lists other than the manufacturer's price list. Said price list(s) must denote the company name, effective date, and price schedule. These price lists are subject to approval of City Finance Department - Procurement Division.

Specified items identified herein, if any, are for overall bid evaluation and represent the commonly and most used items. Net prices entered for those specified items must reflect the actual price derived from quoted price list less all discounts offered.

### Restrictions on Communication.

Bidders are prohibited from communicating with: 1) City officials, as defined by §2-62 of the City Code of the City of San Antonio, regarding the IFB or bids from the time the IFB has been released until the contract is posted for consideration as a City Council agenda item during a meeting designated as an "A" session; and 2) City employees from the time the IFB has been released until the contract is awarded. These restrictions extend to "thank you" letters, phone calls, emails

and any contact that results in the direct or indirect discussion of the IFB and/or bid submitted by Bidder. Violation of this provision by Bidder and/or its agent may lead to disqualification of Bidder's bid from consideration.

Exceptions to the restrictions on communication with City employees include:

Bidders may ask verbal questions concerning this IFB at the Pre-Submittal Conference.

Bidders may submit written questions, or objections to specifications, concerning this IFB to the Staff Contact Person listed on the Cover Page on or before 7 calendar days prior to the date bids are due. Questions received after the stated deadline will not be answered. Questions submitted and City's responses will be posted with this solicitation. All questions shall be sent by e-mail or through the portal.

Bidders may provide responses to questions asked of them by the Staff Contact Person after bids are received and opened. The Staff Contact Person may request clarification to assist in evaluating Bidder's response. The information provided is not intended to change the bid response in any fashion. Such additional information must be provided within two business days from City's request.

Bidders and/or their agents are encouraged to contact the Small Business Office of the International and Economic Development Department for assistance or clarification with issues specifically related to the City's Small Business Economic Development Advocacy (SBEDA) Program policy and/or completion of the SBEDA form(s), if any. The point of contact is identified on the Cover Page. Contacting the Small Business Office regarding this IFB after the bid due date is not permitted. If this solicitation contains Affirmative Procurement Initiatives, it will be noted on the Cover Page.

If this solicitation contains DBE/ACDBE requirements, bidders and/or their agents may contact the Aviation Department's DBE/ACDBE Liaison Officer for assistance or clarification with issues specifically related to the DBE/ACDBE policy and/or completion of the required form(s). Point of contact may be reached via telephone at (210) 207-3922 or through e-mail at [SBEDAdocs@sanantonio.gov](mailto:SBEDAdocs@sanantonio.gov). Bidders and/or their agents may contact the SBEDA office at any time prior to the due date for submission of bids. Contacting the SBEDA office regarding this IFB after the bid due date is not permitted. If this solicitation contains DBE/ACDBE requirements, it will be noted on the Cover Page.

#### Pre-Submittal Conference.

If a Pre-Submittal Conference is scheduled, it will be held at the time and place noted on the Cover Page. Bidders are encouraged to prepare and submit their questions in writing in advance of the Pre-Submittal Conference in order to expedite the proceedings.

Pre-Submittal Conference participation is optional, but highly encouraged.

Respondents who join the WebEx Pre-Submittal Conference are highly encouraged to email the solicitation's Staff Contact Person confirming Respondent attendance and participation through the WebEx.

Any oral response given at the Pre-Submittal Conference that is not confirmed in writing and posted with this solicitation shall not be official or binding on the City.

To request an interpreter for the deaf or other assistance, call (210) 207-7245 Voice/TTY. Interpreters for the deaf must be requested at least 48 hours prior to the meeting.

#### Changes to IFB.

Changes to this IFB made prior to bid opening shall be made directly to the original IFB. Changes are captured by creating a replacement version each time the IFB is changed. It is Bidder's responsibility to check for new versions until the bid due date. City will assume that all bids received are based on the final version of the IFB as it exists on the day bids are due.

No oral statement of any person shall modify or otherwise change or affect the terms, conditions or specifications stated in the IFB.

## Preparation of Bids.

All information required by the IFB must be furnished or the bid may be deemed non-responsive and rejected. Any ambiguity in the bid as a result of omission, error, unintelligible or illegible wording shall be construed in the favor of City.

Correct Legal Name. If Bidder is found to have incorrectly or incompletely stated the name of the entity that will provide goods and/or services, the bid may be rejected.

Line Item Bids. Any bid that is considered for award by each unit or line item, must include a price for each unit or line item for which Bidder wishes to be considered. All bids are awarded on the basis of low line item, low total line items, or in any other combination that serves the best interest of City, unless City designates this solicitation as an "all or none" bid in the Supplemental Terms & Conditions.

All or None Bids. Any bid that is considered for award on an "all or none" basis must include a price for all units or line items. In an "All or None" bid, a unit price left blank shall result in the bid being deemed nonresponsive and disqualified from consideration. An "All or None" bid is one in which City will award the entire contract to one bidder only.

Delivery Dates. Proposed delivery dates must be shown in the bid form where required and shall include weekends and holidays, unless specified otherwise in this IFB. Proposed delivery times must be specific. Phrases such as "as required", "as soon as possible" or "prompt" may result in disqualification of the bid. Special delivery instructions, if any, may be found in the Specifications / Scope of Services section of this document, or in the Purchase Order.

Tax Exemption. The City of San Antonio is exempt from payment of federal taxes, and State of Texas limited sales excise and use taxes. Bidders must not include such taxes in bid prices. An exemption certificate will be signed by City where applicable upon request by Bidder after contract award.

## Description of Supplies.

Any brand names, catalog or manufacturer's reference used in describing an item is merely descriptive, and not restrictive, unless otherwise noted, and is used only to indicate quality and capability desired.

Bids submitted for comparable items must clearly identify the proposed product, model, and type, as applicable, and shall include manufacturer specification sheet(s) for each proposed item with bid response. Product specifications shall be the most current available and be sufficiently detailed and descriptive so as to permit City to determine the item's suitability and compliance with bid specifications. City shall be the sole judge of equality and suitability of comparable items.

Pro-rata adjustments to packaging and pricing may be allowed at the sole discretion of City.

Samples, Demonstrations and Pre-award Testing. If requested by City, Bidder shall provide product samples, demonstrations, and/or testing of items bid to ensure compliance with specifications prior to award of the contract. Samples, demonstrations and/or testing must be provided within 7 calendar days of City's request. Failure to comply with City's request may result in rejection of a bid. All samples (including return thereof), demonstrations, and/or testing shall be at Bidder's expense. Samples will be returned upon written request. Requests for return of samples must be made in writing at the time the samples are provided. Otherwise, samples will become property of City at no cost to City. Samples that are consumed or destroyed during demonstrations or testing will not be returned.

## Estimated Quantities for Annual Contracts.

Designation as an "annual" contract is found in the contract's title on the Cover Page of this document. The quantities stated are estimates only and are in no way binding upon City. Estimated quantities are used for the purpose of evaluation. City may increase or decrease quantities as needed. Where a contract is awarded on a unit price basis, payment shall be based on the actual quantities supplied.

Bidders shall thoroughly examine the drawings, specifications, schedule(s), instructions, and all other contract documents.

Bidders shall make all investigations necessary to thoroughly inform themselves regarding plant and facilities for delivery of material and equipment, or conditions and sites/locations for providing goods and services as required by this IFB. No plea of ignorance by Bidder will be accepted as a basis for varying the requirements of City or the compensation to Bidder.

Confidential or Proprietary Information. All bids become the property of the City upon receipt and will not be returned. Any information deemed to be confidential by Bidder should be clearly noted; however, City cannot guarantee that it will not be compelled to disclose all or part of any public record under the Texas Public Information Act, since information deemed to be confidential by Bidder may not be considered confidential under Texas law, or pursuant to a Court order. Note that pursuant to state law, bids are opened publicly and read aloud. In addition, bids are tabulated and posted to the City's website, so shall not be considered proprietary or confidential.

Interlocal Participation.

City may engage in cooperative purchasing with other governmental entities or governmental cooperatives ("Entity" or "Entities") to enhance City's purchasing power. At City's sole discretion and option, City may inform other Entities that they may acquire items listed in this IFB. If this contract will be subject to cooperative purchasing, such fact will be indicated in the Supplemental Terms and Conditions portion of this IFB. Such acquisition(s) shall be at the prices stated in the bid, and shall be subject to Bidder's acceptance. Entities desiring to acquire items listed in this IFB shall be listed on a rider attached hereto, if known at the time of issuance of the IFB. City may issue subsequent riders after contract award setting forth additional Entities desiring to utilize this bid.

Bidder must sign and submit the rider, if attached to this IFB, with its bid, indicating whether Bidder wishes to allow other Entities to use its bid. Bidder shall sign and return any subsequently issued riders within ten calendar days of receipt. Bidder's decision on whether to allow other Entities to use the bid shall not be a factor in awarding this IFB.

Costs of Bidding. Bidder shall bear any and all costs that are associated with the preparation of the Bid, attendance at the Pre-Submittal Conference, if any, or during any phase of the selection process.

Rejection of Bids.

City may reject any and all bids, in whole or in part, cancel the IFB and reissue the solicitation. City may reject a bid if:

Bidder misstates or conceals any material fact in the bid; or

The bid does not strictly conform to law or the requirements of the solicitation;

The bid is conditional; or

Any other reason that would lead City to believe that the bid is non-responsive or Bidder is not responsible.

City, in its sole discretion, may also waive any minor informalities or irregularities in any bid, such as failure to submit sufficient bid copies, failure to submit literature or similar attachments, or business affiliation information.

Variances and Exceptions to Bid Terms. In order to comply with State law, bidders must submit bids on the same material terms and conditions. Bids that contain material variances or exceptions to the terms and conditions, including additional terms and conditions, will be rejected.

Changes to Bid Form. Bids must be submitted on the forms furnished. Bids that change the format or content of City's IFB will be rejected.

Withdrawal of Bids. Bids may be withdrawn prior to the time set for the bid opening. Bids submitted electronically may be withdrawn electronically.

Bid Opening. Bids will be publicly read aloud online through WebEx at 2:30 p.m. central time on the day the bids are due.

Join by phone:

415-655-0001 (Toll-free Dial-In)

Meeting number (access code): 2630 003 5297

Meeting password: COSA

WebEx Link: <https://sanantonio.webex.com/sanantonio/j.php?MTID=ma673c6c7d0d45e4f617220d952b17be0>

### Evaluation and Award of Contract.

Per Section §252.043 of the Texas Local Government Code, the contract will be awarded to the lowest responsible bidder. The Procurement Division evaluates bids for responsiveness and the responsibility of the bidder, and makes a recommendation to the City Council. The City Council makes the final determination regarding award.

City reserves the right to make an award on the basis of low line item, low total line items, or in any other combination that serves the best interest of City, unless City designates this solicitation as an "all or none" bid in the Supplemental Terms & Conditions.

A written award of acceptance (manifested by a City Ordinance) and Purchase Order furnished to Bidder results in a binding contract without further action by either party. Vendor must have the Purchase Order before making any delivery.

City reserves the right to utilize historical usage data as a basis for evaluation of bids when future usages are unable to be determined.

Breaking of tie bids shall be in accordance with the Texas Local Government Code §271.901.

City reserves the right to delete items prior to the awarding of the contract, and purchase said items by other means.

### Inspection of Facilities/Equipment.

Depending on the nature of the IFB, Bidders' facilities and equipment may be a determining factor in making the bid award. All bidders may be subject to inspection of their facilities and equipment.

Prospective bidders must prove beyond any doubt to City Procurement Administrator that they are qualified and capable of performing the contract's requirements.

### Prompt Payment Discount.

Provided Bidder meets the requirements stated herein, City shall take Bidder's offered prompt payment discount into consideration. The evaluation will not be based on the discount percentage alone, but rather the net price as determined by applying the discount to the bid price, either per line item or total bid amount. However, City reserves the right to reject a discount if the percentage is too low to be of value to City, all things considered. City may also reject a discount if the percentage is so high as to create an overly large disparity between the price City would pay if it is able to take advantage of the discount and the price City would pay if it were unable to pay within the discount period. City may always reject the discount and pay within the 30 day period, at City's sole option.

City will not consider discounts that provide fewer than 10 days to pay in order to receive the discount.

For example, payment terms of 2% 5, Net 30 will NOT be considered in bid evaluations or in the payment of invoices. However, payment terms of 2% 10, Net 30 will result in a two percent reduction in the bid price during bid evaluation, and City will take the 2% discount if the invoice is paid within the 10 day time period.

Tabulations. The Procurement Division will post preliminary tabulations within 7 days of the advertised bid opening. The information on these tabulations will be posted for informational purposes only, and will be posted as read during the bid opening. This tabulation is not a notice of award of the contract. All bids are subject to review for completeness, accuracy and compliance with the terms set forth in the bid documents.

### Bid Protest Procedures.

Any bidder who is adversely affected in connection with the solicitation, evaluation, or proposed award of a contract may file a protest with the Director and appeal any adverse decision to the City Manager of the City of San Antonio.

Bidder must deliver a written notice of protest to the Director within 7 calendar days of the posting of the intent to award. If Bidder does not file a written notice within this time, Bidder will have waived all rights to formally protest the intent to award. It is Bidder's responsibility to check the City's website posting.

Debriefing. Debriefing of contract award is available upon request and after award of the Contract.

Prohibited Financial Interest. The Charter of the City of San Antonio and the City of San Antonio Code of Ethics prohibit a City officer or employee, as those terms are defined in §2-52 of the Code of Ethics, from having a direct or indirect financial

interest in any contract with City. An officer or employee has a “prohibited financial interest” in a contract with City or in the sale to City of land materials, supplies or service, if any of the following individual(s) or entities is a party to the contract or sale:

- a City officer or employee; his or her spouse, sibling, parent, child, or other family member within the first degree of consanguinity or affinity;
- an entity in which the officer or employee, or his or her parent, child or spouse directly or indirectly owns (i) 10% or more of the voting stock or shares of the entity, or 10% or more of the fair market value of the entity; or
- an entity in which any individual or entity listed above is (i) a subcontractor on a City contract, (ii) a partner or (iii) a parent or subsidiary entity.

By submitting a bid, Bidder warrants and certifies, and a contract awarded pursuant to this IFB is made in reliance thereon, that it, its officers, employees, and agents are neither officers nor employees of the City.

Unfair Advancement of Private Interests. Pricing and discounts contained in this contract are for use by City departments conducting City business. City employees may not use their positions to obtain special treatment or prices that are not available to the general public.

**State of Texas Conflict of Interest:**

Questionnaire (Form CIQ). Chapter 176 of the Texas Local Government Code requires that persons, or their agents, who seek to contract for the sale or purchase of property, goods, or services with the City, shall file a completed Form CIQ with the City Clerk if those persons meet the requirements under 176.006(a) of the statute.

By law this questionnaire must be filed with the City Clerk not later than the 7th business day after the date the vendor becomes aware of facts that require the statement to be filed. See Section 176.006(a-1), Texas Local Government Code.

Form CIQ is available from the Texas Ethics Commission by accessing the following web address:

<https://ethics.state.tx.us/forms/conflict/>

In addition, please complete the **City’s Addendum to Form CIQ (Form CIQ-A)** and submit it with Form CIQ to the Office of the City Clerk. The Form CIQ-A can be found at:

<http://www.sanantonio.gov/atty/ethics/pdf/OCC-CIQ-Addendum.pdf>

When completed, the CIQ Form and the CIQ-A Form should be submitted together by mail to the Office of the City Clerk. Please mail to:

Office of the City Clerk, P.O. Box 839966, San Antonio, TX 78283-3966.

Do not include these forms with your sealed bid. The Procurement Division will not deliver the forms to the City Clerk for you.

## 004 - SPECIFICATIONS / SCOPE OF SERVICES

- 4.1 SCOPE:** The City of San Antonio is soliciting bids to obtain the following medium and heavy-duty trucks needed through October 30, 2024:

Description	PO Issued Immediately Upon Award	Estimated PO Issued October 30, 2024	Total Estimated Contract Award
Item 1 – 1 Ton Full Four Door, DRW, 4x4 Pickup Truck w/ Gooseneck Hitch	1	0	1
Item 2 – 1 Ton, Regular Cab, 84" Cab to Axle, DRW 4x2 Flat/Stake Bed Truck with Lift Gate	4	0	4
Item 3 – Class 5, Crew Cab, 12ft Stake/Flat Bed Truck Option A Custom Color – FAA Yellow Option B OEM Color - White	1	0	1
Item 4 – Class 6 Cabover min. 14' Box Truck with Lift Gate	1	0	1
Item 5 – 25K GVWR Landscaping Dump Truck	1	2	3
Item 6 – 35K lbs. GVWR Water Distribution Truck	1	1	2
Item 7 – 52K lbs. GVWR, 12 Cubic Yard Dump Truck	3	0	3
Item 8 – 60K lbs. GVWR 5th Wheel Tractor Truck	2	3	5
Item 9 – Cab and Chassis with Roll Off Hoist and Tarp System - Min. 66K GVWR	1	8	9
Item 10 – Pre-Mix Mastic Seal Applicator Truck	1	0	1
Item 11 - Class 5, Regular Cab, 1,000-gallon Fuel Dispensing Truck	1	0	1
Item 12 - 1 Ton, Crew Cab 4x2 Stake Bed Truck, DRW with Lift Gate	0	1	1
Item 13 – 1 Ton Regular Cab Truck with Mounted Fold Down Bed Option A Custom Color – FAA Yellow Option B OEM Color - White	2	0	2
Item 14 - 1 Ton Crew Cab, DRW, 2-3 Cubic Yard, 9' Dump Body Option A Custom Color – FAA Yellow Option B OEM Color - White	1	0	1
Item 15 – Class 5, Crew Cab and Chassis 4x4 Stake/Flat Bed Truck with Hydraulics Option A Custom Color – FAA Yellow Option B OEM Color - White	1	0	1

- 4.2 GENERAL CONDITIONS:** The following general conditions will apply to all items within this bid unless specifically excluded within any item.

- 4.2.1** Equipment shall be manufacturer's latest design, standard production model and shall have been manufactured within the last 12 months from the date of delivery to City. All components shall be installed new, unused, and shall be manufacturer's standard equipment unless otherwise specified or replaced herein. Equipment shall be inspected, serviced, and adjusted in accordance with manufacturer's recommended pre-delivery checklist, and ready for operation upon delivery. Manufacturer's Statement of Origin (MSO) showing manufacture within the last 12 calendar months and completed pre-delivery checklists will be required at delivery. Equipment offered under the below listed specifications will be considered unacceptable if, for any reason, the equipment's, or major component's, long term availability on the U.S. market, or in the local area, is in doubt. All equipment will conform to the best practice known to the body trade in design, quality of material and workmanship. Assemblies, subassemblies and component parts to be standard and interchangeable throughout the entire quantity of units as specified in this invitation to bid.

**4.2.2** Equipment must include the maximum standard manufacturer's warranty on all components, with parts and service included. All components, parts and service shall include, as a minimum, a one-year warranty. All warranty times shall start the date the vehicle is placed in service as determined by the City, not on the delivery date. The dealer will be notified by letter of the in-service date of each vehicle by serial number. Bidder shall fully explain the warranty by attaching separate, authenticated correspondence or entering such information in the remarks section of this bid. Warranty, reliability, and replacement captive parts costs and availability shall be a consideration in award of this bid. Warranty parts and service must be available within 50-mile radius of San Antonio City Hall from and by a factory-authorized dealer (NO EXCEPTIONS). In the event that a unit purchased from a vendor requires transportation outside of Bexar County for a repair covered under warranty, that vendor shall be responsible for paying for all cost associated with the transportation to and from the warranty repair facility. If the vendor chooses to travel to inspect the unit to determine if the repair needed is covered under warranty, all expenses shall be paid for by the vendor. All warranty repairs must be completed within three (3) business days from the date equipment is delivered to the vendor unless otherwise approved by the appropriate City of San Antonio BESD Fleet Operations Manager or designate. Bidders must certify that all repairs needed after the warranty period will be available within 50-mile radius of San Antonio City Hall.

**4.2.3 DELIVERY** - All deliveries are to be made inside the City limits of San Antonio. Vendor must deliver equipment to the following address:

City of San Antonio,  
Southeast Service Center,  
1318 SE Loop 410, Building 6, Gate 5  
San Antonio, TX 78220  
Attn: Acquisitions

Delivery to a non-specified location will result in non-acceptance of the equipment by the City. All deliveries must be pre-arranged with a minimum 24-hour notification, NO EXCEPTIONS. Vehicles will be accepted 8:00 A.M. to 3:00 P.M. CST. Class 3 dual rear wheel trucks through class 8 may be allowed up to 2500 miles on the vehicle odometer. All vehicles are required to have a full tank(s) when delivered to City specified location.

**4.2.4 Literature and Equipment Manuals** – The supplier shall furnish (2) complete sets per vehicle type, of the following: Parts Manual, Maintenance Manual, Service Manual, and Operators Manual, or (4) USB drives, or on-line access to said items. The supplier shall furnish (2) complete sets of detailed literature and specifications of each vehicle type upon contract award.

**4.2.5 Training** – The City may require operational and maintenance training for equipment. If so, training shall be provided by a qualified instructor and conducted at a designated City facility. The City will not pay any cost incurred by the successful bidder in providing training. Training shall be provided no later than 30 days after the City takes delivery and accepts the new equipment at the specified City facility. Unless otherwise specified, training shall consist of a minimum (1) eight-hour day. Payment for new equipment will not be made to successful bidder until training is completed. Operator training shall be coordinated with Fleet Operations staff. For equipment requiring more complex operation the City may require job site operational training that could last multiple days to assure proper machine operation.

**4.2.6 DEMONSTRATIONS** – The City may request, from selected vendors, a demonstration of proposed equipment. The City is under no obligation to demo all products proposed by vendors. If a demonstration is required, the City's Fleet Operations Manager will contact the vendor to schedule the product demonstration. This request will be considered an integral part of the bid process. Failure to comply may result in the bid being deemed nonresponsive, and therefore, not considered for award. Upon request, the vendor shall have a minimum of five (5) working days to provide and deliver the equipment to a location specified by City for the demonstration. The vendor shall make the equipment available for a minimum of five (5) working days, but not to exceed ten (10) working days, at City's location.

**4.2.7 EVALUATION** – In the event that a demonstration is required, the equipment will be evaluated to determine if the unit meets the minimum bid specifications at the City's discretion.

**4.2.8** All prices will be quoted F.O.B., designated City of San Antonio facility. All bids should include complete manufacturer's specifications for each model being bid.

**4.2.9** Units shall be equipped with OEM, or equal, warning and shut down systems for low oil pressure and or high coolant temperature at a minimum. This requirement applies to all bid line items.

- 4.2.10** Vehicles shall be delivered with dealer temporary license plates/tags, invoice with reference to the purchase order, State of Texas Vehicle Inspection Report in the glove box, Manufacturer's Statement of Origin, vehicle weight slips, Incomplete Vehicle Certificates, and completed TX DMV form 130-U. Omission of any of these items shall delay payment and acceptance. **Vehicles supplied with GVWR of 11,000 lbs. or less must include registration fees in final bid price; and vendor must coordinate exempt license plate application and registration with Building & Equipment prior to submission to the State of Texas and/or local tax assessor collector office.**
- 4.2.11** All bodies and components in this bid will be installed in accordance with the appropriate complete Vehicle Data Manual. Certification of compliance must be posted on the left door post of the vehicle. Except for manufacturer's data plates (maximum 4" x 6"), vendor's or manufacturer's identifying markings (decals and plates) will not be applied to the vehicle or mounted components. Installation must be completed in compliance with Federal Motor Vehicle Department of Transportation Standards and Texas State Highway requirements. Installation of body and accessories on City furnished vehicles shall be accomplished by drilling holes in the frame. Welding on or cutting of frame is not authorized forward of the rear spring hanger or support. Bidders are responsible for the relocation of any truck components to facilitate installation of the body and equipment. Such relocation must be included as part of the basic bid. No dealership nameplates, markings or decals are permitted on the vehicles.
- 4.2.12** All vehicles shall be equipped at the factory with air conditioning/Heater/defroster, maximum capacity cooling system offered by manufacturer, full headliner minimum OEM AM/FM radio, power steering, power mirrors and manual tilt steering wheel. All units to be equipped with steering column mounted gear selector unless otherwise specified. Each unit shall have a minimum three (3) sets of keys. Convenience Features: Vehicle shall be equipped with adjustable seats and intermittent wipers.
- 4.2.13** All units shall be equipped with safety equipment as required by the Federal Government. All units shall MEET ALL SAFETY STANDARDS AND REQUIREMENTS.
- 4.2.14** Any diesel engine being bid must conform to latest NOx EPA and GHG emission standard in effect at the time of offer. Vendor must supply a copy of the latest Emissions Certificate of Conformity for the vehicles bid. Only engines using selective catalytic reduction (SCR) technology will be accepted.
- 4.2.15** All vehicles provided shall be equipped with OEM tinted glass.
- 4.2.16** Exterior and Interior Color: Unless otherwise specified, each vehicle shall have a white exterior body color. Unless otherwise specified, interior seating and flooring shall be grey or black.
- 4.2.17 SILENCE OR ERROR OF SPECIFICATIONS:** The apparent omission or error of specification as to any detailed description concerning any point shall be regarded as meaning that only the best commercial practice is to prevail and only the material and workmanship of the first quality are to be used. Proof of specification compliance will be the responsibility of the awarded respondent.

#### 4.3

ITEM	QUANTITY	DESCRIPTION
1	1	1 Ton Full Four Door, DRW, 4x4 Pickup Truck w/ Gooseneck Hitch

**4.3.1 ENGINE:** Minimum 6 cylinders, with a minimum 370 HP.

**4.3.2 GVWR:** Minimum 10,001 lbs.

**4.3.3 TRANSMISSION/DRIVE:** Automatic transmission with overdrive; 5 speed minimum. Vehicle shall include a 4X4 Drive train, limited slip axles, with a two-speed transfer case with electronic shift control.

**4.3.4 SUSPENSION:** Heaviest duty available to include heavy duty shock absorbers, independent struts with stabilization.

- 4.3.5 DIMENSIONS:** Four full door cab configuration. Bed length to be a minimum of 96". Wheelbase must be a minimum of 150" inches.
- 4.3.6 BRAKES:** Equipped with 4-wheel automatic braking system, and front vented discs minimum.
- 4.3.7 TIRES & WHEELS:** Unit must be equipped with dual rear tires and wheels. Tires to meet or exceed minimum gross vehicle weight rating of vehicle, maximum traction tread design with full size matching spare tire and wheel.
- 4.3.8 MIRRORS:** OEM standard type inside. Power mirrors outside, left and right, collapsible, below eye level type. Recreational swing or telescoping type. Largest size available in model offered. Remote controlled from driver.
- 4.3.9 FUEL SYSTEM:** Fuel tank shall hold a minimum of 25 gallons of Ultra Low Sulfur Diesel.
- 4.3.10 SEATING:** Vinyl seating and cloth upholstery shall be accepted.
- 4.3.11 LIGHTING:** Truck shall be equipped with total of 4 amber strobe lights. Strobes mounted 2 (qty.) on front grill, and 2 (qty.) on tailgate. Strobes shall be highly visible to surrounding motorists. Control toggle switch for strobe lighting shall be installed on the truck dash.
- 4.3.12 TOW PACKAGE:** Rear Bumper – OEM rear bumper and tow package to include receiver hitch with 2" hitch opening, OEM in-cab mounted trailer brake controller and both a 4-Way flat vehicle connector and 7-Way spade flat pin vehicle connector.
- 4.3.13 GOOSENECK HITCH IN BED –** Truck bed will come with a manual, turnover, removeable ball, with spring loaded safety chain openings. Tow ball should be 2 5/16". A steel locking pin with handle shall be provided that goes through ball to secure in place and be accessible at rear driver's side wheel well with easy visibility. Set-up should provide a smooth bed, or a gooseneck hitch as needed. The hitch weight rating shall match rating of truck supplied.
- 4.3.14 SAFETY -** Vehicle shall be equipped with a back-up camera and reverse sensor that gives an audible "beep" inside cab that becomes more audible the closer the vehicle approaches an object. Unit shall be equipped with forward collision warning and blind spot monitoring, where available.



Pictures are for illustrative purposes only.

- 4.3.16 MISCELLANEOUS -** These units are to replace Public Works #115616 immediately upon award.

#### 4.4

ITEM	QUANTITY	DESCRIPTION
2	4	1 Ton, Regular Cab, 84" Cab to Axle, DRW 4x2 Flat/Stake Bed Truck with Lift Gate

- 4.4.1 ENGINE:** Minimum 6 cylinders with a minimum 300 HP.
- 4.4.2 GVWR:** Minimum 10,001 lbs.
- 4.4.3 TRANSMISSION/ DRIVE:** Automatic with overdrive; 5 speed minimum. 4x2 design.
- 4.4.4 SUSPENSION:** Heaviest duty available to include heavy duty shock absorbers, independent struts with stabilization.

- 4.4.5 DIMENSIONS:** Regular cab configuration. Wheelbase must be a minimum 160 inches.
- 4.4.6 BRAKES:** Equipped with 4-wheel automatic braking system, and front vented discs minimum.
- 4.4.7 TIRES & WHEELS:** Dual rear wheel. Tires must be all terrain/off road and meet or exceed minimum gross vehicle weight rating of vehicle, maximum traction tread design with full size matching spare tire and wheel.
- 4.4.8 FUEL SYSTEM:** Fuel tank shall have a 25-gallon minimum capacity and be certified to run on Ultra Low Sulfur Diesel.
- 4.4.9 MIRRORS:** OEM standard type inside. Power mirrors outside, left and right, collapsible, below eye level type. Recreational swing or telescoping type. Largest size available in model offered. Remote controlled from driver.
- 4.4.10 LIGHTING:** Truck shall be equipped with total of 4 amber strobe lights. Strobes mounted 2 (qty.) on front grill, and 2 (qty.) on tailgate. Strobes shall be highly visible to surrounding motorists. Control toggle switch for strobe lighting shall be installed on the truck dash.
- 4.4.11 FLAT/STAKE BED CONFIGURATION**
- 4.4.11.1 LENGTH:** 12' feet.
- 4.4.11.2 WIDTH:** 96" inches
- 4.4.11.3 LONGITUDINAL SILLS:** Minimum 4" inch channel, 5.6-pound, high strength steel.
- 4.4.11.4 CROSS SILLS:** Minimum 4" inch formed box channel of "C" section high strength steel, 11 gauge. All cross sills must be welded to longitudinal sills on all sides.
- 4.4.11.5 SIDES, END RAILS, & STAKES:** Five inch deep, minimum 11 gauge, with built in box type stake pockets. 40" removable stakes sides must be provided to enclose entire bed. Metal or hard plastic acceptable.
- 4.4.11.6 FLOOR:** Minimum 3/16" inch, steel tread plate with floor welded to cross members, or minimum 1/8" inch steel tread plate with a minimum of 5 floor support long sills, formed of twelve 12-gauge steel channel.
- 4.4.11.7 TOW BUMPER:** Unit shall have an ICC bumper that is flush mounted with the end of the platform bed. Unit shall have a combination ball hitch/pintle hook with a minimum capacity of 17,000 lbs. Hitch shall be bolted to ICC bumper. Hitch shall have a black powder coat finish. Hitch will have a 7 Way flat pin/blade vehicle connector. Receiver type hitch is not acceptable.
- 4.4.11.8 LIFT GATE:** Minimum 1,500 lb. lift capacity heavy duty hydraulic electric power lift gate (non-tuck-a-way) must be in place of tailgate. Material shall be tread plate steel with two piece platform, minimum 42" loading deck.
- 4.4.12 SAFETY -** Vehicle shall be equipped with a back-up camera and reverse sensor that gives an audible "beep" inside cab that becomes more audible the closer the vehicle approaches an object. Unit shall be equipped with forward collision warning and blind spot monitoring, where available.
- 4.4.13 MISCELLANEOUS –** These units are to replace for Public Works #058616, 2 grant funded fleet additions for the Fire Department, and a fleet addition that is grant funded for the Police Department immediately upon award.



Picture is for illustrative purposes only.

#### 4.5

ITEM	QUANTITY	DESCRIPTION
3	1	Class 5, Crew Cab, 12ft Stake/Flat Bed Truck

**4.5.1 TRUCK** - Four full door cab, tilt hood preferred, and fenders. Truck must be equipped with running boards at every door. Cab to axle minimum 84". Upholstery shall be dark gray cloth or vinyl. Cab shall be equipped with dark vinyl flooring. Trucks shall be supplied with sufficient factory upfitter switches to accommodate lighting listed below.

**4.5.2 ENGINE** – Gasoline powered, producing a minimum 250 HP rated at manufacturer's RPM.

**4.5.3 GVWR** – 16,001-19,500lbs.

**4.5.4 TRANSMISSION/DRIVE** - Requires a minimum 6 speed heavy duty automatic transmission: 4x2 drive.

**4.5.5 MIRRORS** – Equipped with OEM inside mirror; outside mirrors shall be the largest size mirrors available that are telescoping type.

**4.5.6 AXLE & SUSPENSION** – Truck shall be equipped with front axle that is 5,000 lb. capacity and rear axle that is 15,000 lb. capacity; with applicable suspension and heavy-duty shock absorbers.

**4.5.7 STEERING** – Truck must be supplied with power steering.

**4.5.8 WHEELS & TIRES** - Truck shall be supplied with dual rear wheels. Tires shall meet or exceed minimum gross vehicle weight rating of vehicle, all season design tread.

**4.5.9 BRAKES** - Supplied brakes shall be heavy duty ABS disc brakes.

**4.5.10 FUEL SYSTEM** - Truck must have a minimum of 40 gallon with corresponding dash gauges.

**4.5.11 TOW HOOKS** - Two front tow hooks installed on frame and strengthened sufficiently to lift, pull, and tow truck without damaging bumper or other body parts.

**4.5.12 STAKE BED** – Trucks shall be provided with a 12' stake bed that is diamond plate with 40" removable stakes, and 1,600 lb. capacity heavy hydraulic electric power lift gate (non-tuck-a-way). All components of stake body must be finished in black paint. Solid black mud flaps (no dealer markings) shall be provided behind rear wheels.

**4.5.12.1 LONGITUDINAL SILLS:** Minimum 4" channel, 5.6-pound, high strength steel.

**4.5.12.2 CROSS SILLS:** Minimum 4" formed box channel of "C" section high strength steel, 11 gauge. All cross sills must be welded to longitudinal sills on all sides.

**4.5.12.3 SIDES, END RAILS, & STAKES:** Five inch deep, minimum 11 gauge, with built in box type stake pockets. Minimum 40" removable, inter-lockable stakes sides must be provided to enclose entire bed.

**4.5.13 LIGHTING** – This vehicle requires 4 exterior mounted amber color LED strobe lights-Grote Vertex 77933 Light Head – Amber, or equal. Strobe lights must be installed in four corners (two mounted on truck front grill and two at rear tailgate). Two white LED flood lights shall be mounted to stake bed front to supplement headlights for night work. All lights shall be operated from in-cab controls mounted to the dash.

**4.5.14 SAFETY** – Vehicle shall be equipped with a backup camera with a color display mounted to dash or OEM equipment. Vehicle shall be equipped with rear back up sensors with audible alarm which can be heard inside the cab and passersby. Vehicle shall be equipped with forward collision warning and blind spot monitoring, where available.

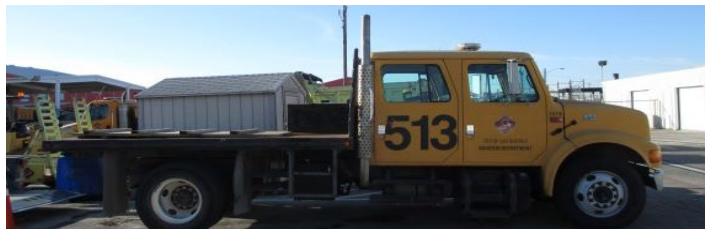
**4.5.15 TOW BUMPER** – These trucks shall have a receiver hitch with a 2" adjustable height hitch. Trucks shall also include an OEM in-cab trailer brake controller and both a 4-way flat vehicle connector and a 7-way spade flat pin (RV Style) vehicle connector.

**4.5.16 MISCELLANEOUS:** This truck will replace #1974 that is used by the Aviation Airfield Maintenance Division. Photo of current vehicle with missing stakes is a 2001 International 4700 that is being downsized to a Class 5 Stake/Flatbed Truck.

**4.5.17 COLOR** - Truck shall be painted in one of the following options which must be indicated by bidder on the price schedule:

**4.5.17.1** Option A – Custom Color Dupont B8779 (FAA safety regulation vehicle color) or equivalent. Ford School Bus Yellow is acceptable.

**4.5.17.2** Option B – OEM White.



Picture is for illustrative purposes only.

## 4.6

ITEM	QUANTITY	DESCRIPTION
4	1	<b>Class 6 Cabover min. 14' Box Truck with Lift Gate</b>
<b>4.6.1</b>	<b>ENGINE:</b>	Diesel. Minimum 4 cycle- 4 cylinder. Unit to have a minimum output of 210 HP at 2,500 RPM.
<b>4.6.2</b>	<b>GVWR:</b>	Minimum 14,001-16,000 lbs.
<b>4.6.3</b>	<b>TRANSMISSION/ DRIVE:</b>	Automatic with overdrive; 6 speed minimum; Power Steering. Unit must deliver minimum torque output of 440 lbs. at 1,500 RPM.
<b>4.6.4</b>	<b>FRONT AXLE / SUSPENSION:</b>	Axle must be a reversed Elliot "I" beam; or equivalent, with taper-leaf spring shock absorbers and stabilizing suspension.
<b>4.6.5</b>	<b>REAR AXLE / SUSPENSION:</b>	Axle must be full-floating, single reduction; single speed by hypoid gearing suspension.
<b>4.6.6</b>	<b>FRAME:</b>	Resisting bending moment must be a minimum 316,800 RBM.

**4.6.7 BRAKES:** Unit must be equipped with all three (3) types:

**4.6.7.1 Service:** hydraulic system for front and rear with disc brakes.

**4.6.7.2 Parking:** Unit must have a mechanical, internally expanding acting on transmission output shaft.

**4.6.7.3 Exhaust:** Supply manufacturer design exhaust valve in exhaust pipe or an provide an exhaust cut-off switch cab.

**4.6.8 DIMENSIONS:** Cab Over design. Minimum wheelbase shall be approximately 137".

**4.6.9 WHEELS & TIRES:** Tires must meet or exceed minimum gross vehicle weight rating of vehicle, all season design.

**4.6.10 FUEL SYSTEM:** Minimum 30-gallon tank capacity and must be certified to run on Ultra Low Sulfur Diesel and be equipped with a Diesel Exhaust Fuel (DEF) tank; 3 gallon minimum. DEF tank gauge must be equipped inside of cab.

**4.6.11 MIRRORS:** OEM standard type inside. Combination mirrors outside, left and right. Top must be standard type mirror. Bottom piece must be convex mirror.

**4.6.12 BOX TRUCK DIMENSIONS (Will accept a 14ft to 16ft box truck)**

**4.6.12.1 BOX LENGTH:** (outside) minimum 14' feet 5" inches

**4.6.12.2 BOX LENGTH:** (inside) minimum 13' feet 11" inches

**4.6.12.3 FLOOR:** One 1/8" inch laminated hardwood floor

**4.6.12.4 REAR DOOR WIDTH:** minimum 88" inches

**4.6.12.5 REAR DOOR HEIGHT:** minimum 79.25" inches

**4.6.12.6 E-TRACKS/ WOODEN SLATS:** Inside box must be equipped with 2 sets of E-Tracks and wooden slats on each side to secure cargo from shift during transport.

**4.6.12.7 ROOF AND PANEL CORNER CAP RADIUS:** Shall be constructed of must be rounded aluminum.

**4.6.12.8 ROOF:** Roof must be one aluminum sheet with anti-slag roof bows on 24" inch centers with crowned roof design which will prevent water/ice pooling.

**4.6.12.9 SIDING:** Box exterior material must be .040 aluminum sheets pre-painted white.

**4.6.12.10 INTERIOR LIGHTS:** Unit must be equipped with an LED interior dome light. Dome light switch will be located near the door of the box.

**4.6.12.11 EXTERIOR LIGHTS:** All exterior lighting must be LED light.

**4.6.12.12 LIFT GATE:** A heavy- duty tuck-under hydraulic electric lift gate will be equipped. Lift gate maximum capacity must be 2,000 lbs. Platform treadplate must be steel, with a minimum 36" inch x 72" platform with a wedge. A locking mechanism must engage when lift gate is folded and tucked under before unit can be driven.

**4.6.12.13 LIFT GATE POWER SWITCH:** An on/off illuminating toggle switch will be mounted in the cab to identify the power for lift gate operation.

**4.6.12.14 SAFETY:** Vehicle shall be equipped with a backup camera with a color display mounted to dash. Vehicle shall be equipped with rear back up sensors with audible alarm which can be heard inside the cab and passersby. Vehicle shall be equipped with forward collision warning and blind spot monitoring, where available. Amber color LED strobe lights model Grote 77353, or equal, must be installed in all four corners (front grill and rear of box body) of truck. Strobes must be wired to a factory type or toggle switch inside of the cab.

**4.6.13 MISCELLANEOUS** - These units are to replace #408918 immediately upon award.

## 4.7

ITEM	QUANTITY	DESCRIPTION
5	3	<b>25K GVWR Landscaping Dump Truck</b>
<b>4.7.1</b>	<b>ENGINE</b>	– Diesel powered, minimum 6.7-liter water cooled engine producing a minimum 300 HP rated at manufacturer's RPM, producing a minimum of 725 ft.lb of torque. Normal torque rise shall be a minimum of 25% with viscous or electromagnetic fan clutch. Engine will have automatic shutdown feature enabled after 5-minutes of idle time when dump feature is not engaged.
<b>4.7.2</b>	<b>GVWR</b>	– Not to exceed 25,999 lbs.
<b>4.7.3</b>	<b>TRANSMISSION/DRIVE</b>	– The chassis shall be equipped with Allison 2500 RDS six (6) speed automatic or proven equal. Eaton/Cummins equivalent or TorqueShift Heavy Duty 10-Speed Automatic shall also be accepted.
<b>4.7.4</b>	<b>CAB</b>	- Cab with, tilt hood, left and right-hand cab grab handles, and manufacturer's standard AM/FM radio. Convex mirrors installed on both front fenders to provide view of obstacles on right side of truck from front bumper to rear wheels. Driver seat must be air ride, high back bucket type. Cab shall be painted OEM white.
<b>4.7.5</b>	<b>FRONT AXLE</b>	- Minimum 8,500 lbs. capacity. Stemco front wheel bearing oiler or proven equal for maintenance free axle.
<b>4.7.6</b>	<b>REAR AXLE</b>	- Minimum 19,000 lbs. capacity. Stemco or equal rear oil seals. Gear ratio will be determined by the best start ability and grade ability.
<b>4.7.7</b>	<b>SUSPENSION</b>	- Equipped with manufacturer's heavy-duty suspension applicable to axle ratings and overall gross vehicle weight supplied.
<b>4.7.8</b>	<b>BRAKES</b>	- Trucks shall be supplied with pneumatic assisted drum brakes on steer and drive axles. Meritor Q-Plus with anti-lock brake system.
<b>4.7.9</b>	<b>TIRES &amp; WHEELS</b>	- Wheels must be 10-hole hub piloted steel disk wheel, minimum 11R 22.5, steel belted tubeless radials, minimum load range G tires, on/off highway tread design. Front wheels must be highway tread design. Rear dual wheel application must be on-off, self-cleaning, lug design. All wheels must be equipped with highest temperature fluorescent loose lug indicators.
<b>4.7.10</b>	<b>FRAME</b>	– Minimum 850,000 RBM.
<b>4.7.11</b>	<b>FUEL SYSTEM</b>	- Single left- or right-hand metal tank mounted under cab or dual left- and right-hand step tanks mounted under cab. Minimum fuel capacity must be 65 gallons. Fuel filtration must include primary and secondary filtering systems with automatic water separator. Diesel Exhaust Fluid (DEF) tank required with in dash DEF gauge.
<b>4.7.12</b>	<b>EXHAUST SYSTEM</b>	- Vertical tailpipe, heat guard, rain cap and turnout, mounted to allow full utilization of specified cab-to-trunnion length.

**4.7.13 ELECTRICAL** - Units must be equipped with two (2) minimum 12-volt, heavy duty batteries (total 1800 CCA). Minimum 130-amp alternator.

**4.7.14 UNIT MUST BE EQUIPPED WITH THE FOLLOWING:**

- 4.7.14.1** Minimum one (1) electrical air horns.
- 4.7.14.2** Turn indicators, front and rear, stop and taillights.
- 4.7.14.3** Tachometer
- 4.7.14.4** Water Temperature, Oil Pressure, and volt/amp gauges
- 4.7.14.5** Adjustable steering column
- 4.7.14.6** Power Port/ USB charging port
- 4.7.14.7** DOT reflectors flare kit
- 4.7.14.8** 10 lb. Fire extinguisher mounted in cab not obstructing operator's field of vision or operation of vehicle.
- 4.7.14.9** Fixed interval wiper control with windshield washer.
- 4.7.14.10** Minimum four (4) factory installed up-fitter switches.

**4.7.15 TOW PACKAGE** – 35,000 lb. swivel type pintle hook mounted 33 ½ inches from ground to center of pintle hook, 7 pin trailer electrical connection and glad hands compatible with ABS air brakes, as well as a trailer with electric brakes. Trailer brake controller shall be supplied in the cab. Pintle hook, air and electrical connections will be located in a protected area that will not interfere with or be damaged by the operation of the dump body or objects being dumped. D-rings must be equipped on both sides of the hitch. Pintle hook, air and electrical connections will be mounted on frame and located in a protected area that will not interfere with or be damaged by the operation of the dump body or objects being dumped. Equipped with glad-hands suitable for ABS brakes.

**4.7.16 SPECIFICATIONS HYDRAULIC DUMP: 16 FT DUMP BODY**

**4.7.17** Dump must be ALL STEEL BODY and must be hydraulic and have PTO inside cab to operate.

**4.7.18 LENGTH:** SIXTEEN feet (16')

**4.7.19 WIDTH:** Ninety-six inches (96")

**4.7.20 LONGITUDINAL SILLS:** Minimum four-inch (4") channel, 5.6-pound, high strength steel

**4.7.21 CROSS SILLS:** Minimum four-inch (4") formed box channel of "C" section high strength steel, eleven (11) gauge. All cross sills must be welded to longitudinal sills on all sides. Allow 16" spacing between cross sills.

**4.7.22 SIDES AND END RAILS:** Five feet (5') deep, minimum eleven (11) gauge, with built in box type stake pockets.

**4.7.23 FLOOR:** Minimum three sixteenth inch (3/16"), steel tread plate with floor welded to cross members, or minimum one eighth inch (1/8") steel tread plate with a minimum of five (5) floor support long sills, formed of twelve (12) gauge steel channel.

**4.7.24 LIGHTS:** Two (2) amber reflectors; four (4) red reflectors; two (2) combination stop and turn signal lights; four (4) clearance lights (mounted on left and right rub rails), all required to meet State inspection requirements.

**4.7.25 MUD FLAPS:** Mud flaps manufactured of a rubber base material must be installed on both sides of vehicle, front and rear of rear tires. Front mud flaps to have anti-sail device. Mud flaps must be minimum one point five (1.5) pounds per square foot and plain black without identifying markings.

**4.7.26 CAB PROTECTOR:** Must be manufactured of minimum two-inch (2") by two-inch (2") minimum eleven (11) gauge steel box tubing. Protector must be cab width and four inches (4") above cab height. Sides of protector must be angled to conform to cab contour (approximately) and extend four inches (4") above top vertical brace. Two (2) vertical, evenly spaced, center supports of minimum two inch (2") by two inch (2") square box is required. Three (3) horizontal braces, one (1) top, one (1) center, and one (1) bottom of frame between vertical braces, using minimum two inch (2") by two inch (2") steel box tubing. Entire protector must be covered from cab side with one inch (1") raised pattern expanded metal (minimum twelve (12) gauge)

and welded securely to frame. Wire mesh must extend from top of frame to the platform floor. Protector must be welded to platform. Cab protector must be painted with Automotive Black Enamel.

**4.7.27 PIVOTS & PINS:** All pivots shall be equipped with grease fittings.

**4.7.28 HYDRAULICS** - Hoist must be a class 110 minimum, full sub-frame type head mount telescopic hoist which conforms to National Truck Equipment Association (NTEA), Hydraulic Hoist and Dump Body Classification Chart. Fifty-degree (50 degree) dump angle +/-2 degrees, with truck chassis frame tapered at rear to form a positive stop with rails of dump box at maximum dump angle. A full mating surface is required. Hydraulic pump must be close couple direct mount to power take off. Pump must be minimum 25 GPM at 1,000 RPM with a feathering valve. Hydraulic system to include in-line hydraulic filter. Transmission Power Take Off (P.T.O.) must be Chelsea brand or Muncie CS series (or equal) with air shift controls. Pump and P.T.O. controls must be firmly mounted in cab where it is easily accessible from driver's position. Cable or rod operated controls are not acceptable. Unit will be provided with safety limit equipment designed to stop the dump body at its maximum dump angle. Safety limit equipment to include a flexible wand type switch, and an air solenoid valve rated at not less than 125 PSI. Hoist installation must provide for use of the entire cylinder stroke when reaching maximum dump angle. Controls must include capability of hoisting, holding or lowering body. Visual light indicator to let operator know when the dump bed is up.

**4.7.29 WORK QUALITY** – Bodies with inferior welds (i.e., pin holes and non-penetrating welds) will not be accepted. Welds on sub-frames or body components will be such as not to interfere with any other frame or body components. All components must be new (overhauled items shall not be accepted.)

**4.7.30 TAILGATE** - Swing Door design. Double doors open from the middle and latch with a chain to secure load. Each door is 4' wide. The width of the truck is 8'. Need to be 5'5" high. Need to open out and lock at the gate. Tailgate must be hinged vertically, not horizontally.

**4.7.31 TARP SYSTEM** - Electric tarp from front to rear of bed with manual override, if available. Housing must be mounted on cab protector. A weather-proof control panel, with a reset breaker. Heavy duty tarp is to cover entire length of trailer cargo space to prevent loose debris from falling out during transport. Tarp controls must be installed inside of cab. Chain cover and tarp must be the same width as the body inside.

**4.7.32 SAFETY-** Vehicle will require amber color LED strobe lights model that are 4"x2". Strobe lights must be installed in all four corners (two mounted on front grill and two at rear of dump body). Front strobes must be wired to the battery cut off switch and rear strobes must be wired to the brake lights. Vehicle shall be equipped with an audible back up alarm that can be heard inside the cab and passersby.

**4.7.33 COLLISION AVOIDANCE SYTEM** – Truck shall come with either an OEM or aftermarket collision avoidance. Said system shall have a visual sensor that has both audible and visual alerts to prevent a collision. Visual alert shall be dash mounted or somewhere in driver's line of sight, and audible speaker can be mounted anywhere at passenger's side in cab or OEM design placement.

**4.7.34 WARNING SYSTEM** - Truck shall come with an either an OEM or aftermarket radar system for blind spot detection system that provides a minimum of 30 feet rearwards and 160° side field coverage. Warning shall be both audible and visual in the driver's line of site. OnSide™ or functional equivalent is acceptable.

**4.7.35 BACK UP CAMERA SYSTEM** – Trucks shall be supplied with a camera system that is equal or equivalent to the specifications below:

**4.7.35.1** DVR Monitor with a minimum of 2GB memory storage (SD card included with delivery if system is an SD card-based system of any brand), color video system, with automatic switcher must be installed to enable proper and safe operation of the truck. All cameras must be WIDE Angle. One camera must be mounted low below the tailgate on the frame of the body to assist in backing up, one camera must be installed to providing a view of the dump operation and two (2) cameras (provided by chassis manufacturer and installed in right and left side rear view mirrors), and one forward facing cameras.

**4.7.35.2** Cameras and connectors must be sealed and waterproof. Flat screen, minimum 7-inch monitor must have extended visor and swivel base and be reachable and viewable from either driver position. Automatic switcher with remote switch must be capable of switching between cameras based on operation controls, transmission setting, or operator's preference. Monitor must have

split screen capabilities and provisions to add another camera without modification. Cameras must have built in infra-red night vision, minimum 130° field of view, and sunshade device.

- 4.7.35.3** The dump operation camera shall provide view when the in the lift and dump positions. The rear-view camera must be activated when the transmission is shifted to reverse, view from the rear camera must be on the monitor when the truck is in transit (i.e. the truck is in motion and the hydraulic system is not engaged). A back up detection system must be installed - Rear object detection system, beeps faster the closer you get to an object while reversing; it will be tied into the camera system specified. Back up detection system.

**4.7.36 MISCELLANEOUS** - This bid item will replace Parks & Recreation Dump Truck #222311 immediately upon award and estimated to replace #288311 and #288411 by October 30, 2024.



Pictures are for illustrative purposes only.

#### 4.8

ITEM	QUANTITY	DESCRIPTION
6	2	35K lbs. GVWR Water Distribution Truck
4.8.1	<b>ENGINE</b> - Diesel, minimum 245 net horsepower rated at manufacturers recommended RPM, producing a minimum of 650 ft. lb. of gross torque, with gear ratio to attain 68 mph +/- 2 mph at full engine governed RPM. Engines must be equipped with OEM or equal shut down control on high water temperature and low oil pressure. Unit must be equipped with engine oil cooler and full flow spin on oil filter, dry type air filter.	
4.8.2	<b>TRANSMISSION</b> - Allison 3000, or proven equal, with external oil cooler and PTO provision. (Hot shift PTO preferred.) Eaton Cummins and TorqShift equivalent shall also be accepted.	
4.8.3	<b>GVWR</b> - Minimum 35,000 lbs.	
4.8.4	<b>REAR AXLE</b> - Minimum 23,000 lbs. capacity, ratio geared to attain 68 MPH +/- 2mph.	
4.8.5	<b>FRONT AXLE</b> - I Beam type, minimum 12,000 lbs. capacity, non-driving.	
4.8.6	<b>SUSPENSION</b> - Equipped with manufacturer's heavy-duty suspension applicable to axle ratings and overall gross vehicle weight.	
4.8.7	<b>BRAKES</b> - Air brakes, full power with automatic adjustment, 4-channel ABS antilock brake system with Traction Control. Equipped with spring set parking brakes on the rear axle.	
4.8.8	<b>WHEELS AND TIRES</b> - Wheels must be 10-hole piloted steel disk wheel, minimum 11R-22.5, steel belted tubeless radials, minimum load range H tires. Front tires must be steer tread. Rear dual wheel application must be all position, self-cleaning, lug design. Loose lug indicators on front and back.	
4.8.9	<b>CAB</b> - Air ride suspension seat for driver and passenger, vinyl preferred, or heavy-duty cloth shall be accepted, AM/FM radio, power locks and windows, 7 ½ x 16 ½ west coast style mirrors with 8" diameter convex spotters.	
4.8.10	<b>WHEELBASE</b> - Minimum 158" inch wheelbase with 84" CA	

- 4.8.11 STEERING** - Integral power steering with tilt.
- 4.8.12 FRAME** - Minimum 50,000 PSI, vehicle must be equipped with two (2) front tow hook installed on frame and strengthened sufficiently to lift, pull, or tow truck.
- 4.8.13 FUEL SYSTEM** - Must be equipped with left hand tank, with total minimum capacity of forty-five (45) gallons. Fuel filtration system to include primary and secondary type fuel filters with automatic water separator.
- 4.8.14 EXHAUST SYSTEM** - Muffler with vertical exhaust tailpipe required (horizontal exhaust shall not be accepted).
- 4.8.15 COOLING SYSTEM** - Largest capacity radiator with automatic viscous fan.
- 4.8.16 ELECTRICAL** - Minimum 1800 CCA Battery and a 130-amp alternator. Alternator must be equipped with a spare (unused) external type starter terminal for electronic speed control. Battery disconnect switch will be installed near the battery box or inside the cab.
- 4.8.17 UNIT MUST BE EQUIPPED WITH THE FOLLOWING ADDITIONAL EQUIPMENT:**
- 4.8.17.1** Two (2) air horns.
  - 4.8.17.2** Integral power steering.
  - 4.8.17.3** Turn indicators, front and rear, stop and taillights.
  - 4.8.17.4** Tachometer.
  - 4.8.17.5** D.E.F. Gauge in cab
  - 4.8.17.6** Cruise Control mounted on dash panel, not steering wheel.
  - 4.8.17.7** Adjustable steering column.
  - 4.8.17.8** Power port for use with Cell Phone/Accessories
  - 4.8.17.9** Water temperature, oil pressure, tachometer and volt or amp gauges.
  - 4.8.17.10** 2 each ¾" x 100' Heavy Duty Garden hose
  - 4.8.17.11** DOT reflector flare kit.
  - 4.8.17.12** Electronic Back up alarm
  - 4.8.17.13** Fenders must be equipped with hose hooks.
  - 4.8.17.14** Minimum AM/FM radio.
  - 4.8.17.15** 5 lb. fire extinguisher.
  - 4.8.17.16** Fixed interval wiper control with windshield washer.
  - 4.8.17.17** Flush rear bumper DOT style bumper
  - 4.8.17.18 COLLISION AVOIDANCE SYTEM** – Truck shall come with either an OEM or aftermarket collision avoidance. Said system shall have a visual sensor that has both audible and visual alerts to prevent a collision. Visual alert shall be dash mounted or somewhere in driver's line of sight, and audible speaker can be mounted anywhere at passenger's side in cab or OEM design placement.
  - 4.8.17.19 WARNING SYSTEM** - Truck shall come with an either an OEM or aftermarket radar system for blind spot detection system that provides a minimum of 30 feet rearwards and 160° side field coverage. Warning shall be both audible and visual in the driver's line of site. OnSide™ or functional equivalent is acceptable.
  - 4.8.17.20 WHEEL CHOCKS** - A set of Heavy-Duty Wheel chocks shall be included.
  - 4.8.17.21 BACK UP CAMERA SYSTEM** – Trucks shall be supplied with a camera system that is equal or equivalent to the specifications below:
    - 4.8.17.21.1** DVR Monitor with a minimum of 2GB memory storage (SD card included with delivery if system is an SD card-based system of any brand), color video system, with automatic switcher must be installed to enable proper and safe operation of the truck. All cameras must be WIDE Angle. One camera must be mounted low below the tailgate on the frame of the body to assist in backing up, one camera must be installed to providing a view of the dump operation and two (2) cameras (provided by chassis manufacture and installed in right and left side rear view mirrors), and one forward facing cameras.

**4.8.17.21.2** Cameras and connectors must be sealed and waterproof. Flat screen, minimum 7-inch monitor must have extended visor and swivel base and be reachable and viewable from either driver position. Automatic switcher with remote switch must be capable of switching between cameras based on operation controls, transmission setting, or operator's preference. Monitor must have split screen capabilities and provisions to add another camera without modification. Cameras must have built in infra-red night vision, minimum 130° field of view, and sunshade device.

**4.8.17.21.3** The rear-view camera must be activated when the transmission is shifted to reverse, view from the rear camera must be on the monitor when the truck is in transit (i.e., the truck is in motion and the hydraulic system is not engaged). A back up detection system must be installed - Rear object detection system, beeps faster the closer you get to an object while reversing; it will be tied into the camera system specified. Back up detection system. Vehicle shall be equipped with an audible alarm that can be heard by passersby.

#### **4.8.18 SPECIFICATIONS FOR TRUCK MOUNTED WATER DISTRIBUTORS**

**4.8.18.1 WATER TANK:** Minimum 1900-gallon tank with 3/16" construction. Tank interior sand blasted and coated with Epoxy coating. 1/4" Z-Frame, dished and flanged heads, a 24" manway, a Berkely (or equivalent) 3x4 pump. Unit must be equipped for a 2 1/2 "hydrant fill. Hydrant refill point must be located at left rear of water body. Body shall have a curbside and street side labels as shown below in lettering that is a minimum of 6" tall.



Pictures is for illustrative purposes only.

**4.8.18.2 SPRAY HEADS:** Minimum of two (2) front mounted, minimum two (2) rear mounted, and one (1) on driver side air operated spray heads, spray heads operated independently with "in-cab" controls. Unit must be equipped with fittings with the ability to hook up a 3/4" garden hose to pump system. Reference photo below for water spray expectations.



Pictures is for illustrative purposes only.

**4.8.18.3 LIGHTING:** Amber beacon light mounted at highest point possible, two (2) adjustable work lights mounted at top rear of tank. Beacon and work lights must be wired into OEM upfitter switch. Completed unit will have any excess frame at the rear neatly cut off and lights reinstalled on the outside of the frame. Body and taillights must be LED.

**4.8.18.4 DECK MOUNTS:** Two (2) (Reelcraft EZ 33112L12D, or design equivalent) 3/4" x 100' electrical rewind hose reel with rollers. Hoses will have adjustable fire nozzles. Hose reels shall be mounted at truck rear out of the way of the spray head water projection.

**4.8.19 SAFETY** - Equipped with OEM airbags as available by manufacturer, seatbelts, amber colored strobe lights must be installed in all four corners of truck. All strobes must be wired to a factory type switch located in cab. Reflective conspicuity tape must be installed along tank sides and rear platform. An LED, amber colored, directional light bar that is the width of the water body rear, shall be mounted high, not impeding hose reels, under the access ladder is acceptable.

**4.8.20 MISCELLANEOUS** - These units are to replace Public Works #1507 water truck immediately upon award and estimated to replace Parks & Recreation #2002 by October 30, 2024.

#### 4.9

ITEM	QUANTITY	DESCRIPTION
7	3	<b>52K lbs. GVWR, 12 Cubic Yard Dump Truck</b>
<b>4.9.1</b>	<b>ENGINE</b> – Diesel powered, minimum 12-liter water cooled engine producing a minimum 470 HP rated at manufacturer's RPM, producing a minimum of 1650 ft.lb of gross torque. Normal torque rise shall be a minimum of 25% with viscous or electromagnetic fan clutch. Engine will have automatic shutdown feature enabled after 5-minutes of idle time. Road speed must be electronically governed to 65 MPH +/- 5 MPH.	
<b>4.9.2</b>	<b>GVWR</b> - Minimum 52,000 lbs.	
<b>4.9.3</b>	<b>TRANSMISSION/DRIVE</b> – Allison 3000, or proven equal, with external oil cooler and PTO provision. (Hot shift PTO preferred.) Eaton Cummins or TorqShift equivalent shall also be accepted.	
<b>4.9.4</b>	<b>FRAME</b> - Minimum 2,000,000 RBM.	
<b>4.9.5</b>	<b>FRONT AXLE</b> - Minimum 12,000 lbs. capacity with 12,000 lbs. spring capacity. Stemco front wheel bearing oiler or proven equal for maintenance free axle.	
<b>4.9.6</b>	<b>REAR AXLE</b> - Minimum 40,000 lbs. capacity with 40,000 lbs. spring capacity, equipped with hub piloted steel hubs, outboard mount type brake drums. Rear axle equipped with heavy duty springs plus auxiliary springs. Stemco or equal rear oil seals. Gear ratio will be determined by the best start ability and grade ability. Unit shall be equipped with a full locking differential.	
<b>4.9.7</b>	<b>SUSPENSION</b> - Equipped with manufacturer's heavy duty walking beam suspension applicable to axle ratings and overall gross vehicle weight.	
<b>4.9.8</b>	<b>TIRES &amp; WHEELS</b> - 6 x 4 design. Wheels must be 10-hole hub piloted steel disk wheel, minimum 11R 22.5, steel belted tubeless radials, minimum load range G tires, on/off highway tread design. Front wheels must be highway tread design. Rear dual wheel application must be on-off, self-cleaning, lug design. All wheels must be equipped with highest temperature fluorescent loose lug indicators.	
<b>4.9.9</b>	<b>BRAKES</b> - Trucks shall be supplied with disc air brakes on steer and drive axles.	
<b>4.9.10</b>	<b>FUEL SYSTEM</b> - Single left- or right-hand metal tank mounted under cab or dual left- and right-hand step tanks mounted under cab. Minimum to fuel capacity must be 70 gallons. Fuel filtration must include primary and secondary filtering systems with automatic water separator. Diesel Exhaust Fluid (DEF) tank required with in dash DEF gauge.	
<b>4.9.11</b>	<b>EXHAUST SYSTEM</b> - Vertical tailpipe, heat guard, rain cap and turnout, mounted to allow full utilization of specified cab-to-trunnion length.	
<b>4.9.12</b>	<b>ELECTRICAL</b> - Units must be equipped with three (3) minimum 12-volt, heavy duty batteries (total 1800 CCA). Minimum 130-amp alternator.	

**4.9.13 CAB:** Air suspension cab with, tilt hood, left and right-hand cab grab handles, and manufacturer's standard AM/FM radio. Convex mirrors installed on both front fenders to provide view of obstacles on right side of truck from front bumper to rear wheels. Driver seat must be air ride, high back bucket type. Passenger seating must be bench seat. Seat belt will be safety orange (seat belt cover not acceptable). Cab shall be painted OEM white.

**4.9.14 UNIT MUST BE EQUIPPED WITH THE FOLLOWING:**

- 4.9.14.1** Minimum one (1) electrical and one (1) air horns.
- 4.9.14.2** Turn indicators, front and rear, stop and taillights.
- 4.9.14.3** Tachometer
- 4.9.14.4** Water Temperature, Oil Pressure, and volt/amp gauges
- 4.9.14.5** Adjustable steering column
- 4.9.14.6** Power Port/ USB charging port
- 4.9.14.7** DOT reflectors flare kit
- 4.9.14.8** 10 lb. Fire extinguisher mounted in cab not obstructing operator's field of vision or operation of vehicle.
- 4.9.14.9** Fixed interval wiper control with windshield washer.
- 4.9.14.10** Minimum four (4) factory installed up-fitter switches.

**4.9.15 TOW PACKAGE** - 49,000 lb. swivel type pintle hook mounted 33 ½ inches from ground to center of pintle hook, 7 pin trailer electrical connection and glad hands compatible with ABS air brakes, as well as a trailer with electric brakes. Trailer brake controller shall be supplied in the cab. Pintle hook, air and electrical connections will be located in a protected area that will not interfere with or be damaged by the operation of the dump body or objects being dumped. D-rings must be equipped on both sides of the hitch.

**4.9.16 SPECIFICATIONS HYDRAULIC DUMP: 12 CY DUMP BODY**

**4.9.17 BODY CONSTRUCTION** - Body must be a minimum of 14' x 7' inside and be constructed of minimum seven (7) gauge steel which meets the ASTM A1011 High Tensile Standard. Body must have a diagonal slope between sides and floor to provide cleaner discharge of load. Sides must be adequately side braced and rub rails be sloped dirt-free type. Floor must be constructed of minimum ¼" AR-400 steel. All welds must be continuous on floor seams, braces, etc., NO SKIP WELDS. Side boards of channel steel minimum 2.60" x 10" x .240" must be installed to present a smooth face on inside of body. Body height must be a minimum 40", 7-gauge steel. Long sills must be constructed of 7" structural I-beam or channel (minimum). Crossmembers must be constructed of 4", 7.7 lbs. per foot structural I-beam or channel (minimum). Under structure must include standard front and rear 4" structural I-beams or channel and intermediate crossmembers maximum on 12" centers evenly spaced from front to rear. Rear corner posts must be a minimum of 10" wide and constructed of seven (7) gauge steel which meets the above-mentioned standard. Body must have half size cab protector. Body sub-frame must have external guides installed to guide body into proper alignment with sub-frame and to prevent side movement during travel. Bottom end of body floor shall incorporate a material chute which shall be constructed of ¼" steel specifically suited for loose aggregate material. Dump body shall be painted OEM black. Ladder must be added on left front to access the dump bed.

**4.9.18 WORK QUALITY** – Bodies with inferior welds (i.e., pin holes and non-penetrating welds) will not be accepted. Welds on sub-frames or body components will be such as not to interfere with any other frame or body components. All components must be new (overhauled items shall not be accepted.)

**4.9.19 TAILGATE** - Tailgate must be air actuated from cab, double-acting type, constructed with boxed type reinforcements on all sides with a basic sheet wrapped over top and under bottom with a minimum of two vertical box braces and one horizontal box brace in center, or one vertical box brace in center and two horizontal box braces. Base section must be of the sloped, dirt-free type. Upper tailgate hardware 1" (minimum) thick flame cut steel. Tailgate latch 5/8" (minimum) thick flame cut steel.

**4.9.20 PIVOTS & PINS** - All pivots must be equipped with grease fittings. Rear hinge pins 2" O.D. minimum, upper tailgate pin 1" O.D. minimum. Lower tailgate pin 2" O.D. minimum.

- 4.9.21 HYDRAULICS** - Hoist must be a class 110 minimum, full sub-frame type head mount telescopic hoist which conforms to National Truck Equipment Association (NTEA), Hydraulic Hoist and Dump Body Classification Chart. Fifty-degree (50 degree) dump angle +/-2 degrees, with truck chassis frame tapered at rear to form a positive stop with rails of dump box at maximum dump angle. A full mating surface is required. Hydraulic pump must be close couple direct mount to power take off. Pump must be minimum 25 GPM at 1,000 RPM with a feathering valve. Hydraulic system to include in-line hydraulic filter. Transmission Power Take Off (P.T.O.) must be Chelsea brand or Muncie CS series (or equal) with air shift controls. Pump and P.T.O. controls must be firmly mounted in cab where it is easily accessible from driver's position. Cable or rod operated controls are not acceptable. Unit will be provided with safety limit equipment designed to stop the dump body at its maximum dump angle. Safety limit equipment to include a flexible wand type switch, and an air solenoid valve rated at not less than 125 PSI. Hoist installation must provide for use of the entire cylinder stroke when reaching maximum dump angle. Controls must include capability of hoisting, holding or lowering body. Visual light indicator to let operator know when the dump bed is up. Safety props to support body in the raised position for service must be installed.
- 4.9.22 OTHER EQUIPMENT**- All necessary clearance lights, marker lights, reflectors, and mud flaps (front shall be an anti-sail type and rear shall be free swinging) must be included must meet State Inspection requirement.
- 4.9.23 PINTLE HOOK** – A 49,000 lb. swivel type pintle hook shall be mounted thirty-three and one-half (33 ½) inches from ground to center of pintle hook, seven (7) pin trailer electrical connection with electrical brake control inside of cab. Pintle hook, air and electrical connections will be mounted on frame and located in a protected area that will not interfere with or be damaged by the operation of the dump body or objects being dumped. Equipped with glad-hands suitable for ABS brakes.
- 4.9.24 TARP SYSTEM** - Electric tarp from front to rear of bed with manual override, if available. Housing must be mounted on cab protector. A weather-proof control panel, with a reset breaker. Heavy duty tarp is to cover entire length of dump bed cargo space to prevent loose debris from falling out during transport. Tarp controls must be installed inside of cab including relay box. Chain cover and tarp must be the same width as the body inside. Rubber tarp bar bumpers must be installed at the contact points with body for the cross bar.
- 4.9.25 SAFETY**- All vehicles will require amber color LED strobe lights Grote Vertex 77933 Light Head – Amber, or equivalent. Strobe lights must be installed in all four corners (two mounted on front grill and two at rear of dump body). Strobes must be wired to the factory ignition powered upfitter switch. Vehicle shall be equipped with an audible back up alarm that can be heard by passers-by.
- 4.9.26 COLLISION AVOIDANCE SYTEM** – Truck shall come with either an OEM or aftermarket collision avoidance. Said system shall have a visual sensor that has both audible and visual alerts to prevent a collision. Visual alert shall be dash mounted or somewhere in driver's line of sight, and audible speaker can be mounted anywhere at passenger's side in cab or OEM design placement. Mobileye 6 Series (Mobileye 630) Collision Avoidance System or like alternative is acceptable if an OEM system is not available.
- 4.9.27 WARNING SYSTEM** - Truck shall come with either an OEM or aftermarket radar system for blind spot detection system that provides a minimum of 30 feet rearwards and 160° side field coverage. Warning shall be both audible and visual in the driver's line of site. OnSide™ or functional equivalent is acceptable.
- 4.9.28 BACK UP CAMERA SYSTEM** – Trucks shall be supplied with a camera system that is equal or equivalent to the specifications below:
- 4.9.28.1** DVR Monitor with a minimum of 2GB memory storage (SD card included with delivery if system is an SD card-based system of any brand), color video system, with automatic switcher must be installed to enable proper and safe operation of the truck. All cameras must be WIDE Angle. One camera must be mounted low below the tailgate on the frame of the body to assist in backing up, one camera must be installed to providing a view of the dump operation and two (2) cameras (provided by chassis manufacture and installed in right and left side rear view mirrors), and one forward facing cameras.
- 4.9.28.2** Cameras and connectors must be sealed and waterproof. Flat screen, minimum 7-inch monitor must have extended visor and swivel base and be reachable and viewable from either driver position. Automatic switcher with remote switch must be capable of switching between cameras based on operation controls, transmission setting, or operator's preference. Monitor must have split screen capabilities and provisions to add another camera without modification. Cameras must have built in infra-red night vision, minimum 130° field of view, and sunshade device.

**4.9.28.3** The dump operation camera shall provide view when the in the lift and dump positions. The rear-view camera must be activated when the transmission is shifted to reverse, view from the rear camera must be on the monitor when the truck is in transit (i.e. the truck is in motion and the hydraulic system is not engaged). A back up detection system must be installed - Rear object detection system, beeps faster the closer you get to an object while reversing; it will be tied into the camera system specified. Back up detection system.

**4.9.29 MISCELLANEOUS** - This bid item will replace #1857, #1931, and #1998 for Aviation immediately upon award.

#### 4.10

ITEM	QUANTITY	DESCRIPTION
8	5	<b>60K lbs. GVWR 5th Wheel Tractor Truck</b>
<b>4.10.1 ENGINE</b>		– Diesel powered, minimum 12-liter water cooled engine producing a minimum 500 HP rated at manufacturer's RPM, producing a minimum of 1650 ft.lb of gross torque. Engine will have automatic shutdown feature enabled after 5-minutes of idle time.
<b>4.10.2 GVWR</b>		- Minimum 60,000 lbs.
<b>4.10.3 TRANSMISSION/DRIVE</b>		- Eaton Fuller Manual; or proven equal. Minimum 10 speed transmission that is capable of producing a minimum of 1750 ft. lb. of gross torque and should be at +/- 70% of engine ground RMP. Nominal torque rise minimum 25%, with viscous or electromagnetic fan clutch. Road speed electronically governed to 68 MPH + / - 2 MPH.
<b>4.10.4 FRONT AXLE</b>		- Minimum 14,600 lbs. capacity with 14,600 lbs. spring with Stemco front wheel bearing oiler or proven equal for maintenance free axle.
<b>4.10.5 REAR AXLE</b>		-Tandem axle configuration- 6x4 design. Single speed tandem drive, minimum 46,000 lbs. capacity. Gear ratio installed must be capable of 68 +/- 5 mph geared road speed at full engine governed RPM. Driver controlled differential locks on rear axles with dust shields.
<b>4.10.6 SUSPENSION</b>		- Equipped with manufacturer's heavy-duty air-ride or spring suspension applicable to axle ratings and overall gross vehicle weight.
<b>4.10.7 TIRES &amp; WHEELS</b>		- Wheels must be 10-hole hub piloted steel disk wheel, minimum 315/80R22.5, steel belted tubeless radials, minimum load range G tires, on/off highway tread design. Front wheels shall be highway tread design. Real dual wheel application must be 11R22.5 self-cleaning, lug design. All wheels shall be equipped with fluorescent loose lug indicators.
<b>4.10.8 BRAKES</b>		- Trucks shall be supplied with drum air brakes on steer and drive axles.
<b>4.10.9 STEERING</b>		- Integral power steering
<b>4.10.10 FUEL SYSTEM</b>		- Single left- or right-hand metal tank mounted under cab or dual left- and right-hand step tanks mounted under cab. Minimum fuel capacity must be 70 gallons. Fuel filtration to include primary and secondary filtering systems with automatic water separator. Diesel Exhaust Fluid (DEF) tank required with in dash DEF gauge.
<b>4.10.11 EXHAUST SYSTEM</b>		- Vertical tailpipe, heat guard, and turn out, mounted to allow full utilization of specified cab-to-trunnion length.
<b>4.10.12 ELECTRICAL</b>		- Units must be equipped with three (3) minimum 12-volt, heavy duty batteries (total 2100 CCA).
<b>4.10.13 CAB</b>		- Air suspension cab with, tilt hood, cab grab handles, and manufacturer's standard AM/FM radio. Convex mirrors installed on both front fenders to provide view of obstacles on right side of truck from front bumper to rear wheels. Driver seat must be air ride, high back bucket type. Passenger seating must be bench seat.

**4.10.14 UNIT MUST BE EQUIPPED WITH THE FOLLOWING:**

- 4.10.14.1** Minimum one (1) electrical and one (1) air horns.
- 4.10.14.2** Turn indicators, front and rear, stop and taillights.
- 4.10.14.3** Tachometer
- 4.10.14.4** Water Temperature, Oil Pressure, and volt/amp gauges
- 4.10.14.5** Adjustable steering column
- 4.10.14.6** Power Port/ USB charging port
- 4.10.14.7** DOT reflectors flare kit
- 4.10.14.8** 10 lb. Fire extinguisher mounted in cab not obstructing operator's field of vision or operation of vehicle.
- 4.10.14.9** Fixed interval wiper control with windshield washer.
- 4.10.14.10** Minimum four (4) factory installed up-fitter switches.

**4.10.15 TOW HOOKS** - Two front tow hooks installed on frame and strengthened sufficiently to lift, pull, and tow truck without damaging bumper or other body parts. A wire rope, minimum 1" inch in diameter, shall be provided and fastened to both tow hooks to attach tow equipment.

**4.10.16 CLUTCH** - Minimum 15.5", 2 plate, heavy duty ceramic faced. Release bearing must have an Zerk extension hose.

**4.10.17 ACCESSORIES** - Tractor air brake system and 7-line trailer connector. Two (2) high intensity strobe lights must be installed, two (2) in the front. All LED strobe lights will operate automatically whenever ignition switch is on, and also from OEM dash mounted toggle switch with no key in ignition. A catwalk and access steps constructed of expanded metal grating or perforated metal to provide a non-slip surface. Aluminum will be acceptable unfinished. Provided and installed between the truck frame rails behind the cab and to extend all the way to the fifth wheel slide, to provide the operator a place to stand while making hydraulic, electrical, and pneumatic connections. Catwalk will be mounted as to not contact trailer while traversing uneven terrain. Vehicle shall have full coverage split rear steel fenders covering all wheels as to not contact trailer. Battery disconnect switch will be installed in cab.

**4.10.18 FIFTH WHEEL** - Unit must be a non-tilt convertible fifth wheel design Holland FW 35, 36" air slide or proven equal. Fifth wheel to extend above rear fenders as to not cause trailer contacting fender under operations in uneven terrain. Heavy duty fifth wheel frame ramps shall also be provided.

**4.10.19 WET KIT** - Prior to delivery of unit to the City, vendor will reach out to end user department and identify the necessary connections for the trailer being utilized. A hot shift PTO mounted, and a direct mount pump shall be installed on the truck transmission which operates 50-90% of engine RPM. A metal hydraulic reservoir must be mounted behind cab and be a minimum of 70-gallon capacity. Hydraulic controls must be mounted inside truck cab readily accessible to the driver. **All hoses shall be secured to a secondary "A" frame.** All valves and fittings required to make wet kit and trailer completely operational to include threaded couplers. Wet kit must be filled to capacity with SAE 10 Hydraulic oil.

**4.10.19.1** Hydraulic hoses and wiring shall be no less than 15 ft. long.

**4.10.19.2** Hydraulic hose couplings must be equal to what is shown below.



*Left photo of connector in use. Middle photo is an alternate view of the connector use. Right photo is of an existing "A" frame for hoses. Pictures are for illustrative purposes only.*

**4.10.20 SAFTEY** - Amber LED clearance lights shall be mounted on top of cab and wired to a toggle switch inside of the cab.

**4.10.21 COLLISION AVOIDANCE SYSTEM** – Truck shall come with either an OEM or aftermarket collision avoidance. Mobileye 6 Series (Mobileye 630) Collision Avoidance System or like alternative is acceptable if an OEM system is not available. Said system shall have a visual sensor that has both audible and visual alerts to prevent a collision. Visual alert shall be dash mounted or somewhere in driver's line of sight, and audible speaker can be mounted anywhere at passenger's side in cab or OEM design placement.

**4.10.22 WARNING SYSTEM** - Truck shall come with an either an OEM or aftermarket radar system for blind spot detection system that provides a minimum of 30 feet rearwards and 160° side field coverage. Warning shall be both audible and visual in the driver's line of site. OnSide™ or functional equivalent is acceptable.

**4.10.23 MISCELLANEOUS** – These units are replacing Public Works #125416 and #147116 immediately upon award. Public Works #124016, #126916, and #139616 are estimated to have a purchase order released by October 30, 2024.

#### 4.11

ITEM	QUANTITY	DESCRIPTION
9	9	Cab and Chassis with Roll Off Hoist and Tarp System - Min. 66K GVWR

#### SPECIFICATIONS CAB AND CHASSIS:

**4.11.1 ENGINE:** Minimum 11.9-liter, in-line 6-cylinder turbo charged diesel, charge-air-cooled with electronic control system. Minimum of 435-HP at maximum 2100-RPM. Minimum peak torque rating of 1,550-lb. ft at 1,200-RPM. Dual-element, dry-type air cleaner with cleanable outer element, replaceable safety element, and restriction warning light or indicator on the dash. Engine computer will be programmed to limit maximum road speed to 65-MPH, engine idle time will be limited to 5-minutes, cruise control will not be activated.

**4.11.2 EXHAUST SYSTEM:** Muffler with vertical exhaust pipe with turn out.

**4.11.3 ENGINE PROTECTION:** Engine will be protected by an OEM engine protection system. As a minimum, the system will monitor engine and transmission oil pressure and temperature. Engine fuel solenoid must be de-energized, and engine automatically stopped when any of the functions being monitored are unsafe per the manufacturer's specifications. System must provide audio and visual alarms for 30 seconds prior to shut down.

**4.11.4 ELECTRICAL:** Units must be equipped with a minimum of (3) three 12-volt, heavy-duty batteries (minimum 1800-CCA) and battery disconnect switch. Alternator must be 12-volt, minimum 160-amps, and gauge of lead wires must be sufficient to meet calculated load for this application. All wiring must be abrasion resistant and designated for severe service/heavy-duty use. Circuit breakers, manual reset with trip indicator minimum, must be used in place of fuses in excess of 20-amps. Speedometer, tachometer, odometer, oil pressure, hour meter, fuel level, voltmeter, coolant temperature and air pressure gauges must be installed.

**4.11.5 LIGHTS:** Cab clearance, marker, stop and back up lights must be LED. All chassis lights, mounted in rubber, and enclosed in steel light box. Mid-ship turn lights must be LED, mounted in rubber, and enclosed in steel light box. Four (4) high intensity strobe lights must be installed, two (2) in, or near, the front grill and two (2) flush mounted at the rear. The two (2) front grill mounted strobe lights will be wired to be lit whenever the battery disconnect switch is in the "on" position.

**4.11.6 TRANSMISSION:** Allison 4500-RDS, six-speed transmission or proven equal such as Eaton Cummins equivalent with push button controls and Load-Based Shift Scheduling. Cooling system must be water to oil type. Transmission temperature gauge must be provided. Must be equipped with a forced auto neutral when the park brakes are applied. Operator must have to manually shift back to drive when the brakes are released. Equipped with a positive interlock, which cannot be overridden, preventing operation of hydraulic system unless transmission is in neutral, (NO EXCEPTIONS). Push-button style keypad shift controller with illuminated digital display, indicator lights, low fluid level indicator, diagnostics (prognostics), and gear / mode selection display. Transmission covered by manufacturer's total warranty of 60-months, unlimited miles, 100% parts, and labor.

- 4.11.7 COOLING SYSTEM:** Maximum capacity offered by the manufacturer. Coolant must be extended life, mixed to protect to -34° F. Silicone coolant hoses with stainless steel constant torque type hose clamps. Full flow, spin-on type, coolant filter. Low coolant warning must be provided.
- 4.11.8 PTO/PUMP:** A hot shift transmission mounted PTO with direct to the transmission. Pump must be rated at hoist manufacturers recommended pressure and gallons per minute requirement. The pump must not require more than 1,200 RPM to produce optimal pressure and flow. Pump must be controlled through a speed device that will prevent engagement of PTO/pump unless engine is at idle and transmission is in the neutral position, device must also disengage PTO/pump when engine RPM exceeds 1,500 RPM.
- 4.11.9 FRAME:** Minimum 120,000-PSI hi-tensile frame rails with full frame liner minimum of 3,700,000 RBM. All structural components, rails, braces, supports, etc., must be attached with "Huck-Bolt" type fasteners.
- 4.11.10 Wheelbase and Cab-to Trunion to be determined by hoist requirements.**
- 4.11.11 CAB:** Conventional type with seating for driver and one passenger, minimum interior width, 80-inches. Maximum insulation (Extreme Climate Thermal Insulation) will be used to reduce engine and exterior heat and noise from penetrating into the cab. Driver seat must be high back bucket type, National Cush-n-Aire, or equal. Passenger seat must be non-suspension two-man bench seat. Seat belts will be colored safety orange. Seat belt cover will not be acceptable. Arm rest on both doors. Doors will have power windows and locks. Windows will have factory and aftermarket tinting.
- 4.11.12 AIR CONDITIONING:** Air conditioning with integral heater and defroster units supplied under this specification must be OEM installed and designed for use with 134A refrigerant. System must be capable of maintaining a temperature inside the operator cab of 70°-F or less with an ambient temperature of not less than 95°-F with a relative humidity of not less than 90%. As a minimum, system must have a radiator-mounted condenser, 3-speed fan, and variable thermostat. If radiator mounted condenser is not practical, remote mount must be approved by the Fleet Acquisition Manager before installation. Roof mounted unit not acceptable. All air conditioner components must be compatible and recommended for end item. Vehicles must be equipped with factory and aftermarket tinted glass and insulated cab headliner.
- 4.11.13 FRONT AXLE:** Setback with minimum 20,000-lbs. capacity, minimum 20,000-lbs. springs, minimum wheel cut 50-degrees, hub piloted steel hubs, out-board mount type brake drums with Stemco or equal front wheel visible cap bearing oiler. Front shock absorbers must be heaviest duty available for specified axle.
- 4.11.14 STEERING:** Integral power steering. Assist cylinders, if any, must be mounted above front axle. Steering column will be tilt/telescoping.
- 4.11.15 REAR AXLE:** Minimum 46,000-lbs., single speed tandem drive, equipped with hub piloted steel hubs, out-board mount type brake drums. Gear ratio installed must be capable of 70-mph +/-2 mph geared road speed at full engine governed RPM. Stemco or equal oil rear seals. Full locking differentials with audible interlock alarm in cab. The alarm must sound when the interlock is in the on position.
- 4.11.16 REAR SUSPENSION:** Minimum 46,000-lbs. capacity, Hendrickson HAULMAAX EX. (NO SUBSTITUTES ACCEPTABLE). Suspension shall be equipped with heaviest duty shock absorbers available with auxiliary spring gap properly adjusted after body installation and prior to delivery to City.
- 4.11.17 WHEELS & TIRES:** All wheels must be 10-hole hub piloted steel disc wheel, 22.5 X 9.0, painted white. Tires must be 315/80R22.5 L. Wheels will have loose wheel indicators installed color orange. All wheels shall be painted white.
- 4.11.18 BRAKES:** Full air drum brake with dust shields and ABS brake control system. Brakes must be the maximum O.E.M size offered of drum brakes front and rear to meet or exceed Federal brake requirements. Air drum brake internal adjuster's front and rear. Minimum 15 CFM compressor, Midland Pure Air Plus dryer model DA- 33100, or proven equal, with automatic drain valves Model KN24000 or equal on all tanks. It is preferred that the air tanks be grouped together, easily accessible to an operator standing at the side of the truck. If not possible, all air tank drains shall be plumbed to a manifold system where drain valves are at one location, easily accessible to an operator standing at the side of the truck. Spring set parking brakes on rear axle. Female coupling Milton M Type or approved equal to air tanks connected to the emergency side of air system, must be located in a protected area near the front bumper.

**4.11.19 FUEL SYSTEM:** To be equipped with minimum capacity of 50-gallons, aluminum, or steel tank. Fuel filtration system to include primary and secondary filter with water separator. Fuel filler neck is required to have a full flow screen. DEF tank must be equipped with gauge inside cab, if applicable. Fuel tank and DEF tank shall be mounted street side and shall be delivered full.

**4.11.20 UNITS TO BE EQUIPED WITH THE FOLLOWING ADDITIONAL EQUIPMENT:**

**4.11.20.1** Motorized, West Coast type, right and left hand, heavy-duty, 6-inch x 16-inch split focus, (approximately 2/3 flat area, 1/3 adjustable convex) breakaway type, mirrors.

**4.11.20.2** Air horn(s) and single electric horn.

**4.11.20.3** Windshield wiper/washers with minimum 3 speed or variable speed wipers. Washer reservoir must not be mounted inside cab.

**4.11.20.4** 5-lb., ABC type fire extinguisher securely mounted in the cab.

**4.11.20.5** DOT triangle warning kit securely mounted in the cab.

**4.11.20.6** Exterior cab grab handles, both sides.

**4.11.20.7** Two (2) front tow hooks installed on frame and strengthened sufficiently to lift, pull, and tow truck without damaging bumper or other body parts. A wire rope, minimum 1-inch diameter, shall be provided and fastened to both tow hooks to attach tow equipment.

**4.11.20.8** Exterior sun visor, painted the same color as truck, and interior sun visors for driver and passengers.

**4.11.20.9** Heavy-duty drive lines.

**4.11.20.10** Minimum AM/FM with auxiliary input radio with two speakers.

**4.11.20.11** Cigar lighter/power port.

**4.11.20.12** Back up alarm

**4.11.20.13** Parabolic mirrors installed on front fenders to provide view of obstacles on sides of truck from front bumper to rear wheels.

**4.11.20.14** Ignition and door locks will be keyed alike. Three keys will be furnished for each truck delivered. Decal showing the total height of the unit displayed on the dash.

**4.11.20.15** Traffic cone rack and water cooler rack mounted street side.

**4.11.21 CAB COLOR:** OEM white.

**4.11.22 SAFETY** – Vehicle shall be supplied with a BACK UP CAMERA and DVR Monitoring with color video system, with automatic switcher must be installed to enable proper and safe operation of the truck. Cameras and connectors must be sealed and waterproof. Flat screen, minimum 8.4-inch monitor to have extended visor and swivel base and be reachable and viewable from either driver position. Automatic switcher with remote switch must be capable of switching between cameras based on operation controls, transmission setting, or operator's preference. Monitor to have split screen capabilities and provisions to add another camera without modification. Cameras to have built in infra-red night vision, wide angle 170-degree field of view, and sunshade device. One (1) camera must be mounted below the tailgate to assist in backing up, two (2) cameras mounted under mirrors on right and left sides of cab, and one (1) forward facing camera. Mounting position and orientation of the cameras are to provide full 360 degree recorded view of the vehicle. The rear-view camera must be activated when the transmission is shifted to reverse, view from the rear camera must be on the monitor when the truck is in transit (i.e. the truck is in motion and the hydraulic system is not engaged). A back up detection system must be installed – Rear object detection system, beeps faster the closer you get to an object while reversing; it will be tied into the camera system specified.

- 4.11.23 CRASH AVOIDANCE SYSTEM** – Vehicle shall have an OEM Crash Avoidance System, or an aftermarket Collision Avoidance System shall be installed. This is a vision sensor complete with audible and visual alerts to prevent collision. Visual alert can be dash mounted in driver's line of sight, and audible speaker can be mounted anywhere at passenger's side in cab.

**SPECIFICATIONS ROLL OFF TILT FRAME HOIST:**

- 4.11.24** These specifications are for self-loading refuse containers up to 22' inside length without overhang of the tilt frame rails. The minimum lift capacity must be 75,000 lbs. All equipment furnished under this contract must be new, unused, and the manufacturer's current production model. Accessories, not specifically mentioned herein but are necessary to furnish a complete unit, ready for use, also must be included. Vendor must state number of years this model has been part of their manufacturing process. Hoist must be compatible with containers currently owned by the City.
- 4.11.25** Vendor must state its normal warranty, which will control to the extent and manner that it exceeds the minimum warranty. The minimum warranty is:
- 4.11.25.1** Basic Warranty – Entire hoist body – 12 months, unlimited mileage, 100% parts and labor
  - 4.11.25.2** 5 years – Materials and workmanship
  - 4.11.25.3** 5 years – Electrical system
  - 4.11.25.4** 5 years – Cylinders
- 4.11.26** The body must be mounted to the chassis by factory-trained technicians. Body must be in conformance with latest ANSI Z245.1 safety standards.
- 4.11.27 FRAME:** Constructed of heavy-duty material with a minimum 10" x 4" x 1/2" tubing and 1/2" x 3" bar wear strips. Sub frame units constructed of heavy-duty material will have a minimum 8" x 4" x 1/2" main rails and 4" x 2" x 1/4" sub-frame. Outside rollers: ten (10) minimum 4" OD x 2" ID x 3-3/4" long with Aluminum Bronze Bushings. Rollers must be secured with a collar and bolt. The forward end frame rail must have a hold down front stop and a lock. The hold down must be minimum 1" plate with 3/4" x 3" formed liner. The hoist must have zerk grease fittings at all wear points. Rear Hinge: must be welded and bolted to the truck frame with 3" heat treated hinge pin and 1 1/2" plate. Outside rails must be provided. Rear Roller: must be a quick change, 8" minimum 3" diameter long life bearing. Fenders: 2 double heavy-duty steel over rear tires. Dump angle must not be less than 47-degrees. Unit must be mounted to chassis frame using manufacturer's standard method to keep with chassis manufacturing standards. All electrical wiring will be protected by looms or conduit and terminate in a watertight junction box, unprotected wiring is unacceptable.
- 4.11.28 CABLE SYSTEM:** Cable for hoist will be a minimum of 7/8" – 75' EIPS IWRC and supplied with a rectangular eye fitting and swedge connection. The opening must be approximately 3-5/8," of cast alloy construction and overall length is approximately 12". The sheaves will be 10" in diameter with 2-5/16" bearing surface with aluminum bronze bushings for longer life. Each sheave must be interchangeable and held in place with minimum 2" diameter pins.
- 4.11.29 HYDRAULIC SYSTEM:** The reeving cylinders must have a minimum 7" Bore x 80" stroke. The reeving cylinders to have 1/4" minimum steel lattice plate top cover over the area of the rod extension. Over reeving limiter must be provided. The lift cylinders must have a 6" Bore x 72" stroke. The hydraulic tank must be frame mounted, have a minimum capacity of 60 gallons, an in-tank micro glass filter (both suction and pressure will be filtered), a hydraulic filter restriction gauge, and constructed with a minimum of 7-gauge steel. Tank to also include a sight gauge, thermometer, and a minimum 3-micron vent filter. A hydraulic sampling device such as (Probilizer) gauge port to connect test equipment, and a fill port, 3/8-inch minimum, must be installed on hydraulic tank. One-quarter (1/4) turn ball valves will be installed to isolate the reservoir (suction and return lines) for service and maintenance. All hoses must be high-pressure wire braid construction designed to withstand four times the system pressure. Hydraulic tubing must be zinc dichromate treated to prevent rust.

- 4.11.30 CAB CONTROLS** - The inside cab controls will be air over hydraulic type and return to neutral position when released. Outside controls must be ergonomically located behind the cab and properly labeled to indicate the direction of travel.
- 4.11.31 HOIST** - Hoist cycle time must be not more than 46 seconds. Cable in and out: hoist up and down.
- 4.11.32 CONTAINER SAFETY:** Must be equipped with a manual container tie down system that will secure all outside or inside rail containers without modifications to, or hold downs on, the container. Strap with integrated ratchet is acceptable. Dash indicator light and audible alert when body is in the up position. Body props, one on each side.
- 4.11.33 REAR BUMPER:** Rear Bumper must meet ICC and DOT under ride requirements and have the ability to fold up automatically as the hoist is being raised to the up position.
- 4.11.34 PAINT:** Complete unit must be cleaned, and media blasted with all weld slag, oil and other residue removed. Cleaning must be in keeping with accepted industry standards. Unit will be primed, and a finish coat of high gloss enamel applied. Unit must be painted black.
- 4.11.35 TOOLBOX:** Minimum ten (10) gauge painted steel with minimum one eighth inch (1/8") plate top toolbox, mounted on the passenger side. Toolbox must be a minimum forty-eight inches (48") in length by eighteen inches (18") wide by eighteen inches (18") high. Unit to have a door seal with rain gutter and a locking door handle.
- 4.11.36 TARP SYSTEM** - PREVIOUS MODEL on the current vehicle being replaced is a Stellar SI75174OR. Seeking an approved equal or the latest available model from Stellar SIAT with a telescoping tower system, with automatic arms. Tarping system must be powered by chassis hydraulic system. Tower must be hydraulically adjustable from 72-inches (lowered) to 120-inches (raised). Arm kit design with hydraulic cylinder adjustable pivot point to compensate for different container lengths. Tarper must have system to rephase arm cylinders for synchronizing. Controls must be installed outside directly behind cab on driver's side mounted to tarper gantry.
- 4.11.37 MISCELLANEOUS:** These units are to replace Solid Waste Management truck #469715 immediately Solid Waste Management trucks #468915, #469015, #469115, #469215, #469315, #469415, #469515, and #469615 by October 30, 2024.

## 4.12

ITEM	QUANTITY	DESCRIPTION
10	1	Pre-Mix Mastic Seal Applicator Truck
<b>4.12.1</b>	<b>ENGINE</b>	- Minimum 350 HP, 1450 ft.lb. torque. Engines must be equipped with automatic shutdown control on high water temperature and low oil pressure. Maximum road speed must be electronically limited to 68 MPH +/- 5 MPH. Cruise control shall not be activated.
<b>4.12.2</b>	<b>TRANSMISSION/ DRIVE</b>	- Automatic transmission, Allison 4500RDS or equivalent such as Eaton Cummins.
<b>4.12.3</b>	<b>PTO</b>	- Transmission to PTO speed up ratio is 124%. The PTO always needs must be able to be independent of truck travel speed or engine speed.
<b>4.12.4</b>	<b>CUSTOM FRAME LAYOUT</b>	- Need inside left-hand frame rail clear for PTO drive mount and extension tube to mount oversized pump at rear of transmission. Chassis shall be fitted with left hand transmission PTO.
<b>4.12.5</b>	<b>CAB TO AXLE</b>	- Minimum 187" inches.
<b>4.12.6</b>	<b>WHEELBASE</b>	- Minimum 254" inches.

- 4.12.7 AXLES** - Pusher axles with pusher tire must be low profile and follow inside track of tandem axle. Rear axle spread shall be 54" inches. Front axle rating shall be a minimum of 20,000lbs. Rear axle rating shall be a minimum of 46,000lbs. Pusher shall be a minimum of 8,800lbs. Total gross vehicle weight shall be 66,000 lbs.
- 4.12.8 SUSPENSION** - Minimum 66,000 lbs. capacity. Maximum allowable vertical travel of suspension is 4"
- 4.12.9 WHEELS & TIRES** - Front wheels must be 10-hole hub piloted, steel disk wheels, 315/80, steel belted tubeless radials. Front wheels must be highway tread design. Rear dual wheel application must be 11R22.5 self-cleaning, lug design. Florescent loose lug indicators on front and back that is the highest temperature rated.
- 4.12.10 BRAKES** - Full air disc brake with dust shields and ABS brake control system. Brakes must be the minimum OEM size offered of disc brakes front and rear to meet or exceed Federal brake requirements. Air disc brake internal adjuster's front and rear. Minimum 15.9 CFM compressor, Bendix AD-IS air dryer or equal, with automatic drain valves on all tanks. It is preferred the air tanks be grouped together, easily accessible to an operator standing at the side of the truck. If not possible, air tank drains shall be plumbed to the manifold system where drain valves are at one location, easily accessible to an operator standing at the side of the truck. Spring set parking brakes on the rear axle shall be equipped. Female coupling ½" Milton M Type or proven to air tanks.
- 4.12.11 FUEL SYSTEM** - Minimum total fuel capacity shall be 70 gallons. Fuel filtration to include primary and secondary filtering systems with automatic water separator. Truck shall be equipped with a DEF system. Truck will be delivered with full fuel and DEF tanks.
- 4.12.12 COLOR** - OEM white cab and a black body.
- 4.12.13 CAB** - Standard cab with running boards, tilt hood and fenders, cab grab handles, and manufacturer's standard AM/FM radio. Power windows, power doors, power mirrors. Doors to have armrests. Units must be factory equipped with installed OEM air conditioner, heater, defroster units, insulated cab headliner, standard left and right-side sun visor, left and right outside manual mirrors, West Coast type, single piece, minimum 7-inches x 16-inches painted, split focus type (flat area, adjustable convex), spring loaded, retractable, heavy-duty mirrors. Parabolic mirror installed on right front fender to provide view of obstacles on right side of tractor from front bumper to rear wheels. Driver seat must be bucket type, National Cush-n-Aire or equal. Passenger seat must be non-suspension bench seat to seat two. A back-up camera with dash monitor and exterior audible back up alarm shall be provided.
- 4.12.14 EXHAUST SYSTEM** - Stainless steel, vertical exhaust components must not affect the clear cab to trunnion dimension.
- 4.12.15 COOLANT SYSTEM** - Largest capacity radiator available.
- 4.12.16 UNIT MUST BE EQUIPPED WITH THE FOLLOWING ADDITIONAL EQUIPMENT:**
- 4.12.16.1** Minimum one (1) electrical and one (1) air horns.
  - 4.12.16.2** Integral power steering
  - 4.12.16.3** Adjustable steering column
  - 4.12.16.4** Water temperature, oil pressure, tachometer and volt or amp gauges.
  - 4.12.16.5** 5lb ABC fire extinguisher
  - 4.12.16.6** Turn Indicators, front and rear, stop and taillights.
- 4.12.17 CHASSIS** - Any brand chassis is acceptable that meets these requirements.
- 4.12.18 FRICTIONAL MASTIC SEAL APPLICATOR SPECIFICATIONS:**
- 4.12.18.1 MASTIC SEAL TANK** - A minimum 3,000-gallon cylindrical shaped tank for mastic sealer is required. Unit to have an agitation or mixing system to maintain material consistency during transit, pumping, and spreading operations, regardless of engine speed. Tank shall be bright orange in color.
  - 4.12.18.2 WATER TANK** - 300-gallon tank for water shall be supplied.

- 4.12.18.3 SPREADER BOX** - Unit must be equipped with a slurry seal spreader box, expandable up to a minimum of 12ft, for the application of Onyx or equivalent material. An expandable spray bar with spray nozzles shall not be substituted for a spreader box. The spreader box shall have either a squeegee or brush to smooth the material application.
- 4.12.18.4 STANDING PLATFORM** - Applicator shall be equipped with an enclosed rear operator deck with access to the mastic seal tank.
- 4.12.18.5 MATERIAL DELIVERY SYSTEM** - Material shall be dispensed through a gravity fed system to reduce historical maintenance costs from pump and clogged nozzles on spray bar delivery systems.
- 4.12.18.6 APPLICATOR BODY** - A Bergkamp MAxx Gravity premixed surface treatment applicator. An equivalent alternate gravity fed pre-mix mastic seal applicator is acceptable with proven performance at an on-site demonstration within 10 business days of bid closing. The City of San Antonio Public Works department shall provide the Onyx for the slurry. The demonstration shall require bidder presence up 6 hours for the on-site sealing demonstration on a city road.
- 4.12.19 SAFETY** - Vehicle shall be equipped with a back-up camera and back-up sensors. Unit shall be equipped with forward collision warning and blind spot monitoring, where available.
- 4.12.20 MISCELLANEOUS:** This truck shall replace Unit#022413 that is used by the Public Works Department.

#### 4.13

ITEM	QUANTITY	DESCRIPTION
11	1	<b>Class 5, Regular Cab, 1,000-gallon Fuel Dispensing Truck</b>
<b>4.13.1</b>	<b>ENGINE:</b>	Diesel powered engine capable of producing a minimum 330 HP rated min 600 lb. ft. torque.
<b>4.13.2</b>	<b>GVWR:</b>	Not to exceed 19,500 lbs. (required to stay within class 5 non-CDL rating).
<b>4.13.3</b>	<b>TRANSMISSION/DRIVE:</b>	Requires a minimum 6 speed heavy duty automatic transmission: 4x4 drive with limited slip axle and PTO provision.
<b>4.13.4</b>	<b>MIRRORS:</b>	Equipped with OEM inside mirror; outside mirrors shall be the largest size mirrors available that are telescoping type.
<b>4.13.5</b>	<b>WHEELS &amp; TIRES:</b>	OEM steel wheels, equipped with dual rear wheels. Tires shall meet or exceed minimum gross vehicle weight rating of vehicle, all season design.
<b>4.13.6</b>	<b>AXLE &amp; SUSPENSION:</b>	Truck shall be equipped with front axle that is minimum 6,000 lb. capacity and rear axle that is at minimum 19,000 lb. capacity OR matching offered truck GVWR: with applicable suspension and heavy-duty shock absorbers. Unit shall be equipped with a limited slip axle and electric shift on the fly.
<b>4.13.7</b>	<b>STEERING:</b>	Truck must be supplied with power steering.
<b>4.13.8</b>	<b>BRAKES:</b>	Supplied brakes shall be heavy duty ABS disc brakes.
<b>4.13.9</b>	<b>FUEL TANK:</b>	Truck must have a minimum of 40 gallon of diesel for chassis consumption.
<b>4.13.10</b>	<b>CAB:</b>	Truck shall be supplied with a Regular cab. Seats shall be of vinyl type seats. Floor shall be covered in rubber. Cab shall include heavy duty rubber floor mats.
<b>4.13.11</b>	<b>SIDESTEP:</b>	All cab doors at street and curb side shall each have a Luverne Grip Step 7" Running board installed.

- 4.13.12 FUEL TANK BODY:** Vehicle shall be supplied with a 1,000-gallon fuel tank. Tank shall be minimum 3/16" carbon steel shell, that is complete with rollover protection. Tank shall be equipped with a vented lockable topside manway. All appropriate baffles shall be built into the tank for an on-road fuel tanker manual cut off shall be installed at tank for emergency shut off.
- 4.13.13 FUEL DISPENSER:** Shall be completely enclosed in compartment at rear of tank. One rear facing electric rewind hose reel consisting of 100' ft 1" diameter hose. Hydraulic fuel dispenser shall be capable of dispensing fuel in a retail fashion at a rate of 7-10 gallons per minute. Unit must be capable of gravity feeding in the event of pump failure. Dispenser shall have electric meter near fuel dispenser.
- 4.13.13.1 FUEL DISPENSING METER PREPARATION WORK:** Vendor shall preinstall 12vDC closed solenoids at each dispense point and 10:1 pulsers at each meter. Wiring needs must be in seal tight conduit to explosion proof junction boxes mounted in the reel compartment area.
- 4.13.14 STORAGE:** Vehicle shall be equipped with two (2) fender storage cabinets equipped with interior lighting and lockable door capable of storing spill kit referenced in following section.
- 4.13.15 SAFETY:** Vehicle must be supplied with a backup camera integrated into rear view mirror or dash and audible alarm activated when vehicle is placed in reverse that can be heard inside the cab and passersby. Red and white DOT reflective tape shall run along the curbside, street side, and rear of body. Vehicle shall be equipped with required hazmat labeling affixed to body. A cab shield shall be placed between the fuel tank and the cab.
- 4.13.16 UNIT MUST BE EQUIPPED WITH THE FOLLOWING:**
- 4.13.16.1** Minimum one horns.
  - 4.13.16.2** Turn indicators, front and rear, stop and taillights.
  - 4.13.16.3** Headlights
  - 4.13.16.4** Tachometer
  - 4.13.16.5** Water Temperature, Oil Pressure, and volt/amp gauges
  - 4.13.16.6** Adjustable steering column
  - 4.13.16.7** Power Port/ USB charging port
  - 4.13.16.8** DOT reflectors flare kit
  - 4.13.16.9** DOT Certified A, B,&C fire extinguisher must be mounted in cab with proper identifying markings on the outside of the cab notating "Fire Extinguisher Inside."
  - 4.13.16.10** HAZMAT spill kit (JJ Keller Product 731-R or equal) to include:
    - (4) 3" x4" hazmat absorbent socks;
    - (6) 16"x0" medium weight absorbent pads;
    - (1) temporary disposal bag;
    - (1) pair clear goggles with perforated venting;
    - (1) pair nitrile gloves;
    - (1) 0-gallon white, snap-lid pail UN certified 1H2/00S; and
    - (1) Emergency Response Guidebook.
- 4.13.17 TOW HOOKS:** Two front tow hooks installed on frame and strengthened sufficiently to lift, pull, and tow truck without damaging bumper or other body parts.
- 4.13.18 LIGHTING & ACCESSORIES:** Clearance lights, marker lights, reflectors, and mud flaps shall be included Three FRC Spectra SPA260-Q15 will be mounted on truck. One facing each side and one facing rear of truck. Exact mounting shall be determined by fire department personnel Lights shall be activated using (one light each switch) Whelen Brand Core-C System.
- 4.13.19 COLOR:** Vehicle, tank body (including any dispensing compartments), and storage boxes must all be OEM white.
- 4.13.20 MISCELLANEOUS:** This is to replace #8294, a fuel truck for SAFD. This shall be a federally funded grant vehicle with a purchase order issued immediately upon award.

4.14

ITEM	QUANTITY	DESCRIPTION
12	1	1 Ton, Crew Cab 4x2 Stake Bed Truck, DRW with Lift Gate
4.14.1	<b>ENGINE:</b> Minimum 6-cylinder diesel engine capable of producing a minimum 330 HP.	
4.14.2	<b>GVWR:</b> Minimum 10,000 lbs.	
4.14.3	<b>TRANSMISSION/DRIVE:</b> Automatic with overdrive; 5 speed minimum; Power Steering; 4x2 drive train.	
4.14.4	<b>SUSPENSION:</b> Heaviest Duty available to include heavy duty shock absorbers and independent struts with stabilization.	
4.14.5	<b>BRAKES:</b> Equipped with 4-wheel braking system, and front vented discs minimum.	
4.14.6	<b>DIMENSIONS:</b> 4 door cab configurations. 60" (inch) cab to chassis. Wheelbase shall be a minimum of 175" (inches).	
4.14.7	<b>WHEELS &amp; TIRES:</b> Unit shall be equipped with dual rear tires and wheels and shall be equipped with a tire pressure monitoring system. Tires shall meet or exceed minimum gross vehicle weight rating of vehicle, maximum traction tread design with full size matching spare tire and wheel. Rear tires shall be equipped with a Cats Eye TPMS or approved equal.	
4.14.8	<b>FUEL SYSTEM:</b> Unit shall have a minimum fuel capacity of 24-gallons. Fuel filtration system shall include primary and secondary filter with water separator. DEF tank shall be equipped with gauge inside cab, if applicable.	
4.14.9	<b>MIRRORS:</b> OEM standard type inside. Power mirrors outside, left and right, collapsible, below eye level type. Driver and passenger mirror configuration shall be equipped with a standard and convex type mirrors. Recreational swing or telescoping type are acceptable. Largest size available in model offered. Remote controlled from driver.	
4.14.10	<b>SEATING:</b> Vehicle shall be equipped with a 40/20/40 front bench and single rear bench seat, vinyl seat and upholstery. Center console shall be equipped.	
4.14.11	<b>FLOOR:</b> Unit shall be equipped with dark vinyl flooring.	
4.14.12	<b>STAKE BED:</b> Bed shall be a minimum of 9' (Feet) long x 7.5' (Feet) wide with 40" (inch) high removable racks. Floor shall be one piece, 3/16 steel. Unit shall be equipped with a head rack with expanded metal insert to protect cab.	
4.14.13	<b>MUD FLAPS:</b> Unit shall be equipped with black unmarked mud flaps with anti-sail device positioned rear of the axle.	
4.14.14	<b>STEP BARS:</b> Unit shall be equipped with two (2) step bars, one on each side. Steps bars shall have a non-slip surface to provide safe entry and exit of vehicle and have a minimum weight limit of 500 lbs.	
4.14.15	<b>LIGHTING:</b> Truck shall be equipped with a minimum of 4 amber strobe lights. Strobes will be mounted: 2 (qty.) on front grill, and 2 (qty.) on rear body panel. Strobes shall be mounted at a height visible to surrounding motorists. Control toggle switches for strobe lighting shall be installed on the truck dash or use of factory up fitter switches, both shall be accepted. Strobes shall be surface mounted, hide-a-way type shall not be accepted.	
4.14.16	<b>BACK UP CAMERA:</b> Unit shall be equipped with a backup camera with a color display mounted to the dash. Truck shall be equipped with rear backup sensors with audible alarm (or "beep") which can be heard inside the cab that becomes more audible the closer the vehicle approaches an object. Truck shall be equipped with forward collision warning and blind spot monitoring, where available.	

- 4.14.17 TOW PACKAGE:** Tow package to include receiver hitch with 2" hitch opening, OEM in-cab mounted trailer brake controller and both a 4-Way flat vehicle connector and 7-Way spade flat pin vehicle connector.
- 4.14.18 LIFT GATE:** Unit shall be equipped with a 1,500 lbs. minimum lift capacity, heavy duty hydraulic electric power lift gate. Platform shall be two pieces with a minimum of 42" loading depth. Platform construction shall be steel or aluminum. Both shall be accepted; tuck-a-way models shall not be accepted.
- 4.14.19 COLOR:** Cab shall be OEM white. The body shall be OEM black.
- 4.14.20 MISCELLANEOUS:** This specification shall replace Public Works #100017 with a Purchase Order issued no later than October 30, 2024.

#### 4.15

ITEM	QUANTITY	DESCRIPTION
13	2	<b>1 Ton Regular Cab Truck with Mounted Fold Down Bed</b>
<b>4.15.1</b>	<b>ENGINE:</b>	Gasoline powered, producing a minimum 325 net horsepower rated at manufacturers recommended RPM, producing a minimum of 450 ft. lb. of gross torque 325 HP450 lb-ft of torque rated at manufacturer's RPM.
<b>4.15.2</b>	<b>GVWR:</b>	Minimum 10,000 lbs.
<b>4.15.3</b>	<b>TRANSMISSION/DRIVE:</b>	Automatic transmission with overdrive; 5 speed minimum. Vehicle shall be a 4x2 with single rear wheel.
<b>4.15.4</b>	<b>SUSPENSION:</b>	Heaviest Duty available to include heavy duty shock absorbers, independent struts with stabilization.
<b>4.15.5</b>	<b>DIMENSIONS:</b>	Regular cab configuration. Bed length must be a minimum of 97" wide and minimum 96" long. Wheelbase manufacturer's recommendation for a regular cab chassis and 9ft bed length.
<b>4.15.6</b>	<b>BRAKES:</b>	Equipped with 4-wheel automatic braking system, and front vented discs minimum.
<b>4.15.7</b>	<b>TIRES &amp; WHEELS:</b>	Unit must be equipped with single rear tires and wheels. Tires to meet or exceed minimum gross vehicle weight rating of vehicle, maximum traction tread design or manufacturer's tire design for unpaved roads with full size matching spare tire and wheel.
<b>4.15.8</b>	<b>MIRRORS:</b>	OEM standard type inside. Power mirrors outside, left and right, collapsible, below eye level type. Recreational swing or telescoping type. Largest size available in model offered. Remote controlled from driver.
<b>4.15.9</b>	<b>FUEL SYSTEM:</b>	Fuel tank shall hold a minimum of 20 gallons of gasoline.
<b>4.15.10</b>	<b>SEATING:</b>	Dark color vinyl seating or dark color upholstery.
<b>4.15.11</b>	<b>LIGHTING:</b>	Truck shall be equipped with total of 4 amber strobe lights that are Grote Vertex 77933 Light Head – Amber, or equal. Strobes mounted 2 (qty.) on front grill, and 2 (qty.) on tailgate. Strobes shall be highly visible to surrounding motorists. Strobe light must be wired into OEM upfitter switch.
<b>4.15.12</b>	<b>COLOR</b>	Truck shall be painted in one of the following options supplied on the price schedule:
	<b>4.15.12.1</b>	Option A – Custom Color Dupont B8779 (FAA safety regulation vehicle color).
	<b>4.15.12.2</b>	Option B – OEM White
<b>4.15.13</b>	<b>BODY PLATFORM</b>	Color may be painted black constructed of 10-gauge smooth deck with the following:
	<b>4.15.13.1</b>	3" channel cross sills on 12" spacing.

- 4.15.13.2 4" channel main sills on 34" spacing.
- 4.15.13.3 No pockets or rub rails on sides. Body must have 13 ½" tall fold down contractor solid sides
- 4.15.13.4 ICC Bumper hitch with tow package (2" hitch receiver), with OEM in Cab mounted trailer brake controller and both a 4-way flat vehicle connector and a 7-way spade flat pin vehicle connector.
- 4.15.13.5 40" Tall Standard style bulkhead with louvered window.
- 4.15.13.6 LED clearance lights and brake lights.
- 4.15.13.7 Shear plate mounted.
- 4.15.13.8 Mud flaps shall be solid black with no advertising.
- 4.15.13.9 Sides shall fold down with hinges and shall not be removable. See photo for reference:



Photo is for illustrative purposes only.

- 4.15.14 **LIFT GATE** - One-piece steel treadplate liftgate with a 35" loading depth and a 6" taper. Dual hydraulic cylinders with an enclosed hydraulic system that has all critical components that are factory enclosed. There shall be a flow control valve that prevents uncontrolled descent of platform. There shall also be a pressure relief valve that prevents the operator from overloading the platform. The electric control system shall be moisture resistant with toggle switches that deactivate approximately 90 seconds after the last operation with a timer reset and on/off buttons. Unit shall have a manual reset. Lift gate shall also have a direct connection from the lift gate to the truck battery with manually resettable breaker. Will accept Tommy Gate Model G2-92-1350 TP35 or equivalent.
- 4.15.15 **SAFETY** - Vehicle shall be equipped with a back-up camera and reverse sensor that gives an audible "beep" inside cab that becomes more audible the closer the vehicle approaches an object. Unit shall be equipped with forward collision warning and blind spot monitoring, where available.
- 4.15.16 **MISCELLANEOUS** – These units shall replace Aviation trucks #194415 and #1964 with a purchase order issued immediately upon award.

#### 4.16

ITEM	QUANTITY	DESCRIPTION
14	1	1 Ton Crew Cab, DRW, 2-3 Cubic Yard, 9' Dump Body
4.16.1	<b>ENGINE</b> – Gasoline powered minimum 330 HP, minimum 450 torque.	
4.16.2	<b>GVWR</b> – Minimum 13,000 lbs.	
4.16.3	<b>TRANSMISSION/DRIVE</b> – Requires a minimum 6 speed heavy duty automatic transmission: 4x2 drive.	
4.16.4	<b>CAB to AXLE</b> – Truck cab to axle shall be approximately 60".	
4.16.5	<b>MIRRORS</b> – Equipped with OEM inside mirror; outside mirrors shall be the largest size mirrors available that are telescoping type.	
4.16.6	<b>WHEELS &amp; TIRES</b> – Truck shall be supplied with dual rear wheels. Tires shall meet or exceed minimum gross vehicle weight rating of vehicle, all season design.	

- 4.16.7 AXLE & SUSPENSION** – Truck shall be equipped with front axle that is minimum 6,000 lb. capacity and rear axle that is at minimum 7,000 lb. capacity OR matching offered truck GVWR; with applicable suspension and heavy-duty shock absorbers. Truck shall be equipped with limited slip axles or equivalent.
- 4.16.8 STEERING** – Truck is required must be supplied with power steering.
- 4.16.9 BRAKES** – Supplied brakes shall be heavy duty ABS disc brakes.
- 4.16.10 FUEL TANK** – Truck must have a minimum of 40-gallon tank.
- 4.16.11 CAB** – Truck shall be supplied with a crew cab. Seating shall be a 40/20/40 front bench seat with console and bench rear seating. Upholstery shall be dark gray cloth or vinyl. Cab shall be equipped with dark vinyl flooring.
- 4.16.12 SIDESTEP** – All doors at street and curb side shall each have a black colored sidestep for access ease to cab. Solid running board or single step are acceptable options.
- 4.16.13 DUMP BODY CONSTRUCTION** –Truck shall be supplied with a minimum 2 cubic yard to a maximum 3 cubic yard dump body. Dump body must include cab shield with window cutout. Dump body must be constructed of steel; steel wrapped wood shall not be accepted. Dump body shall be approximately 96" wide x 108" long. Dump body shall have a quick latch system, spreader chains and front mounted trip level with adjustable linkage. All welds must be continuous on floor seams, braces, etc., NO SKIP WELDS.
- 4.16.13.1 LONGITUDINAL SILLS:** Minimum 5" channel, 5.6-pound, high strength steel.
- 4.16.13.2 CROSS SILLS:** Minimum 3" structural channel cross members on 12" centers.
- 4.16.13.3 SIDES, CORNERS, & TAILGATE:** Dump body shall be constructed with minimum 10-gauge floor, side corners, and tailgate.
- 4.16.13.4 STORAGE BOXES:** Truck must be supplied with two (2) lockable toolboxes mounted under body near front axle at left and right side of body. Sized to fit area and maximize space available.
- 4.16.14 HYDRAULICS** - Hoist must be a class C minimum, which conforms to National Truck Equipment Association (NTEA), Hydraulic Hoist and Dump Body Classification Chart. Trucks shall be supplied with a double acting hydraulically operated hoist that offers approximately forty-five-degree (45°) dump angle +/-2 degrees, with truck chassis frame tapered at rear to form a positive stop with rails of dump box at maximum dump angle. Hoist installation must provide for use of the entire cylinder stroke when reaching maximum dump angle. Controls must include capability of hoisting, holding or lowering body. Safety props to hold body in raised position for service required.
- 4.16.15 OTHER EQUIPMENT**- All necessary clearance lights, marker lights, reflectors, mud flaps and mechanical back up alarm must be included must meet State Inspection requirement. Four High intensity amber strobe lights Grote Vertex 77933 Light Head – Amber, or equal must be installed, two (2) in or near, the front grill and two (2) flush mounted near the top of the rear tailgates. Headlight mounted will not be accepted. All strobe lights, front and rear, will be wired into OEM upfitter switches.
- 4.16.16 TOW BUMPER** – These trucks shall have a receiver hitch with a 2" hitch opening, OEM in-cab trailer brake controller and a both a 4-way flat vehicle connector and a 7-way spade flat pin (RV style) vehicle connector.
- 4.16.17 SAFETY** - Vehicle shall be equipped with a back-up camera and reverse sensors that gives an audible "beep" that becomes more audible the closer the vehicle approaches an object. Unit shall be equipped with forward collision warning and blind spot monitoring, where available.
- 4.16.18 MICELLANEOUS** – Vehicle shall replace Aviation #187913 with a purchase order issued upon contract award.



Pictures are for illustrative purposes only.

**4.16.19 COLOR** - Truck dump body shall be black or painted to match cab. Cab shall be painted in one of the following options which must be indicated by bidder on the price schedule:

**4.16.19.1** Option A – Custom Color Dupont B8779 (FAA safety regulation vehicle color).

**4.16.19.2** Option B – OEM White.

#### 4.17

ITEM	QUANTITY	DESCRIPTION
15	1	<b>Class 5, Crew Cab and Chassis 4x4 Stake/Flat Bed Truck with Hydraulics</b>

**4.17.1 TRUCK** - This vehicle will be used to periodically tow a 2009 Shaeben Pro 1010 Chemical Sprayer to treat the airport's green spaces. A four full door cab, tilt hood preferred, and fenders is requested. Truck must be equipped with running boards at every door. Cab to axle minimum 84". Upholstery shall be dark gray cloth or vinyl. Cab shall be equipped with dark vinyl flooring. Trucks shall be supplied with sufficient factory upfitter switches to accommodate lighting listed below.

**4.17.2 ENGINE** – Gasoline powered, producing a minimum 325 net horsepower rated at manufacturers recommended RPM, producing a minimum of 450 ft. lb. of gross torque rated at manufacturer's RPM.

**4.17.3 GVWR** – 16,001-19,500lbs.

**4.17.4 TRANSMISSION/DRIVE** - Requires a minimum 6 speed heavy duty automatic transmission: 4x4 drive, with PTO provision.

**4.17.5 MIRRORS** – Equipped with OEM inside mirror; outside mirrors shall be the largest size mirrors available that are telescoping type.

**4.17.6 AXLE & SUSPENSION** – Truck shall be equipped with front axle that is minimum 5,000 lb. capacity and rear axle that is a minimum 14,500 lb. capacity: with applicable suspension and heavy-duty shock absorbers.

**4.17.7 STEERING** – Truck must be supplied with power steering.

**4.17.8 WHEELS & TIRES** - Truck shall be supplied with dual rear wheels. Tires shall meet or exceed minimum gross vehicle weight rating of vehicle, all season design tread.

**4.17.9 BRAKES** - Supplied brakes shall be heavy duty ABS disc brakes.

**4.17.10 FUEL SYSTEM** - Truck must have a minimum of 40 gallon with corresponding dash gauges.

**4.17.11 TOW HOOKS** - Two front tow hooks installed on frame and strengthened sufficiently to lift, pull, and tow truck without damaging bumper or other body parts.

**4.17.12 STAKE BED** – Trucks shall be provided with a 12' stake bed that is diamond plate with 40" removable stakes, and 1,600 lb. capacity heavy hydraulic electric power lift gate (non-tuck-a-way). All components of stake body must be finished in black paint. Solid black mud flaps (no dealer markings) shall be provided behind rear wheels.

**4.17.12.1 LONGITUDINAL SILLS:** Minimum 4" channel, 5.6-pound, high strength steel.

**4.17.12.2 CROSS SILLS:** Minimum 4" formed box channel of "C" section high strength steel, 11 gauge. All cross sills must be welded to longitudinal sills on all sides.

**4.17.12.3 SIDES, END RAILS, & STAKES:** Five inch deep, minimum 11 gauge, with built in box type stake pockets. Minimum 40" removable, inter-lockable stakes sides must be provided to enclose entire bed.

**4.17.13 LIGHTING** – This vehicle requires 4 exterior mounted amber color LED strobe lights-Grote Vertex 77933 Light Head – Amber, or equal. Strobe lights must be installed in four corners (two mounted on truck front grill and two at rear tailgate). Two white LED flood lights shall be mounted to stake bed front to supplement headlights for night work. All lights shall be operated from in-cab controls mounted to the dash.

**4.17.14 SAFETY** – Vehicle shall be equipped with a backup camera with a color display mounted to dash or OEM equipment. Vehicle shall be equipped with rear back up sensors with audible alarm which can be heard by passersby and inside the cab. Vehicle shall be equipped with forward collision warning and blind spot monitoring, where available.

**4.17.15 TOW BUMPER** – These trucks shall have a receiver hitch with a 2" adjustable height hitch. Vehicle shall be supplied with a lunette eye ring capable of towing up to 16,000 lbs. Trucks shall also include an OEM in-cab trailer brake controller and both a 4-way flat vehicle connector and a 7-way spade flat pin (RV Style) vehicle connector. This shall be a versatile truck that can pull a variety of trailers and equipment.

**4.17.16 MISCELLANEOUS:** This truck will replace #1862 that is used by the Aviation Airfield Maintenance Division for routine tasks and will on occasion tow a 2009 Shaben Pro 1010 Chemical Sprayer. A purchase order shall be issued immediately upon award.



*Left photo is the 2009 Shaben Pro 1010. Right photo is clovis hitch for the supplied lunette eye. Pictures are for illustrative purposes only.*

**4.17.17 WET KIT** - Prior to delivery of unit to the City, vendor will reach out to Aviation and identify the necessary connections for the 2009 Shaben Pro 1010 Chemical Sprayer which shall have a 60ft hydraulic and fold boom. A hot shift PTO mounted, and a direct mount pump shall be installed on the truck transmission which operates 50-90% of engine RPM. A metal hydraulic reservoir must be mounted under flatbed body and be a sufficient size to support sprayer operation. Hydraulic controls must be mounted inside truck cab readily accessible to the driver. Wet kit must be filled to capacity with SAE 10 Hydraulic oil.

**4.17.17.1** Hydraulic hoses shall be run along frame with secure clamps and connect to fittings at the rear bulkhead. Supply and return fittings will be quick disconnect type that match chemical sprayer.

**4.17.17.2** Hyd fittings: Below is a picture of the current connections of the Aviation chemical sprayer unit that will be operated with this truck.



Pictures are for illustrative purposes only.

**4.17.18 COLOR** - Truck shall be painted in one of the following options as indicated by bidder on the price schedule:

**4.17.18.1** Option A – Custom Color Dupont B8779 (FAA safety regulation vehicle color).

**4.17.18.2** Option B – OEM White.

## 005 - SUPPLEMENTAL TERMS & CONDITIONS

### Original Contract Term.

This contract shall begin upon the effective date of the ordinance awarding the contract, or date specified in the award letter if this contract does not exceed \$50,000. This contract shall terminate upon completion of all work described herein or delivery of all goods ordered, as applicable.

### Liquidated Damages for Delay:

The parties agree that the actual damages that might be sustained by the City by reason of the breach by Vendor of its covenant to make delivery within the time specified herein, is uncertain and would be difficult of ascertainment, and **that the sum of \$100.00 per day per unit for each day that delivery is late would be a reasonable compensation for** such breach. Vendor hereby promises to pay, and City hereby agrees to accept, such sum as liquidated damages, and not as a penalty, in the event of such breach. Furthermore, the parties agree that City may withhold said liquidated damages from any payments due to Vendor hereunder. If Vendor's delay exceeds 30 days, City may, at its option, elect to terminate this contract in whole or in part. In such event, City may pursue actual damages, rather than applying this liquidated damage provision.

### Force Majeure.

Should performance of any obligation created under this Agreement become illegal or impossible by reason of fire, flood, storm, epidemic, pandemic, or other national or regional emergency, act of God, governmental authority, or the common enemy, or the result of war, riot, civil commotion, sovereign conduct, or any other cause not enumerated herein but which is beyond the reasonable control of the Party whose performance is affected, then the Liquidated Damages provision is suspended during the period of, and only to the extent of, such prevention or hindrance, provided the affected Party provides reasonable notice of the event of force majeure and exercises all reasonable diligence to remove the cause of force majeure.

### Insurance.

Prior to the commencement of purchase and delivery of vehicles under this Agreement, CONTRACTOR must provide a completed Certificate(s) of Insurance to CITY's Building and Equipment Services Department (BESD). The certificate must be:

- clearly labeled with the name of the contract in the Description of Operations block;
- completed by an agent and signed by a person authorized by the insurer to bind coverage on its behalf (CITY will not accept Memorandum of Insurance or Binders as proof of insurance); and
- properly endorsed and have the agent's signature, and phone number.

Certificates may be mailed or sent via email, directly from the insurer's authorized representative. CITY shall have no duty to pay or perform under this Agreement until such certificate and endorsements have been received and approved by CITY'S BESD. No officer or employee, other than CITY'S Risk Manager, shall have authority to waive this requirement.

If the City does not receive copies of insurance endorsement, then by executing this Agreement, CONTRACTOR certifies and represents that its endorsements do not materially alter or diminish the insurance coverage for this contract.

The City's Risk Manager reserves the right to modify the insurance coverages, their limits, and deductibles prior to the scheduled event or during the effective period of this Agreement based on changes in statutory law, court decisions, and changes in the insurance market which presents an increased risk exposure.

CONTRACTOR shall obtain and maintain in full force and effect for the duration of this Agreement, at CONTRACTOR'S sole expense, insurance coverage written on an occurrence basis, by companies authorized and admitted to do business in the State of Texas and with an A.M. Best's rating of no less than A- (VII), in the following types and for an amount not less than the amount listed below. If the CONTRACTOR claims to be self-insured, they must provide a copy of their declaration page so the CITY can review their deductibles:

TYPE	AMOUNTS
1. Workers' Compensation	Statutory
2. Employers' Liability	\$1,000,000/\$1,000,000/\$1,000,000
3. Commercial General Liability Insurance to include coverage for the following: a. Premises/Operations b. Products/Completed Operations c. Personal/Advertising Injury d. Contractual Liability e. Independent Contractors*	For <u>Bodily Injury</u> and <u>Property Damage</u> of \$1,000,000 per occurrence. \$2,000,000 General Aggregate, or its equivalent in Umbrella Liability Coverage
4. Business Automobile Liability a. Owned/leased vehicles b. Non-owned vehicles c. Hired Vehicles	<u>Combined Single Limit</u> for <u>Bodily Injury</u> and <u>Property Damage</u> of \$1,000,000 per occurrence
*5.Products liability	\$1,000,000 per occurrence; \$2,000,000 general aggregate, or its equivalent in Umbrella Liability Coverage.
*If Applicable	

CONTRACTOR must require, by written contract, that all subcontractors providing goods or services under this Agreement obtain the same insurance coverages required of CONTRACTOR and provide a certificate of insurance and endorsement that names CONTRACTOR and CITY as additional insureds. CONTRACTOR shall provide CITY with subcontractor certificates and endorsements before the subcontractor starts work.

If a loss results in litigation, then the CITY is entitled, upon request and without expense to the City, to receive copies of the policies, declaration page and all endorsements. CONTRACTOR must comply with such requests within 10 days by submitting the requested insurance documents to the CITY at the following address:

City of San Antonio  
Attn: BESD  
P.O. Box 839966  
San Antonio, Texas 78283-3966

CONTRACTOR's insurance policies must contain or be endorsed to contain the following provisions:

- Name CITY and its officers, officials, employees, volunteers, and elected representatives as additional insureds by endorsement, as respects operations and activities of, or on behalf of, the named insured performed under contract with CITY. The endorsement requirement is not applicable for workers' compensation and professional liability policies.
- Endorsement that the "other insurance" clause shall not apply to CITY where CITY is an additional insured shown on the policy. CITY's insurance is not applicable in the event of a claim.
- Contractor shall submit a waiver of subrogation to include, workers' compensation, employers' liability, general liability and auto liability policies in favor of CITY; and
- Provide 30 days advance written notice directly to CITY of any suspension, cancellation, non-renewal or materials change in coverage, and not less than ten (10) calendar days advance written notice for nonpayment of premium.

Within five (5) calendar days of a suspension, cancellation, material change in coverage, or non-renewal of coverage, CONTRACTOR shall provide a replacement Certificate of Insurance and applicable endorsements to CITY. CITY shall have the option to suspend CONTRACTOR'S performance should there be a lapse in coverage at any time during this Agreement. Failure to provide and to maintain the required insurance shall constitute a material breach of this Agreement.

In addition to any other remedies CITY may have upon CONTRACTOR'S failure to provide and maintain any insurance or policy endorsements to the extent and within the time required, CITY may order CONTRACTOR to stop work and/or

withhold any payment(s) which become due to CONTRACTOR under this Agreement until CONTRACTOR demonstrates compliance with requirements.

Nothing contained in this Agreement shall be construed as limiting the extent to which CONTRACTOR may be held responsible for payments of damages to persons or property resulting from CONTRACTOR'S or its subcontractors' performance of the work covered under this Agreement.

CONTRACTOR'S insurance shall be deemed primary and non-contributory with respect to any insurance or self - insurance carried by City for liability arising out of operations under this Agreement.

The insurance required is in addition to and separate from any other obligation contained in this Agreement and no claim or action by or on behalf of City shall be limited to insurance coverage provided.

CONTRACTOR and any subcontractor are responsible for all damage to their own equipment and/or property result from their own negligence.

#### FEDERAL GRANT FUNDING PROVISIONS

The Uniform Administrative Requirements, Cost Principles, and Audit Requirements for Federal Awards (Uniform Rules) set forth at 2 CFR Part 200 are hereby incorporated by reference.

##### Clean Air Act & Federal Water Pollution Control Act Contract Clause

Clean Air Act & Federal Water Pollution Control Act - (1) Contractor agrees to comply with all applicable standards, orders or regulations issued pursuant to the Clean Air Act (42 U.S.C. §§7401-7671q) and the Federal Water Pollution Control Act (33 U.S.C. §§1251-1387), as amended. Contractor agrees to report each violation to the City and understands that the City will, in turn, report each violation as required to the federal agency providing funds for this contract and the appropriate EPA Regional Office. (2) Contractor agrees to include these requirements in each subcontract to this contract exceeding \$150,000 financed in whole or in part with federal funds.

##### Suspension and Debarment Contract Clause

This contract is a covered transaction for purposes of 2 CFR Part 200. As such, the contractor is required to verify that neither the contractor, nor its principals, as defined at 2 CFR 180.995, are excluded or disqualified as defined at 2 CFR 180.940 and 2 CFR 180.935, respectively.

The contractor is required to comply with 2 CFR 200 and must include the requirement to comply with 2 CFR 200 in any lower tier covered transaction it enters into.

By signing and submitting its bid or proposal, Contractor certifies that:

- Neither it nor its principals are presently debarred, suspended for debarment, declared ineligible or voluntarily excluded from participation in any State or Federal Program;
- Contractor shall provide immediate written notice to City if, at any time during the term of this contract, including any renewals hereof, Contractor learns that its certification was erroneous when made or has become erroneous by reason of changed circumstances.

The certification in this clause is a material representation of fact relied upon by City. If it is later determined that the bidder or proposer knowingly rendered an erroneous certification, in addition to remedies available to City, the Federal Government may pursue available remedies, including but not limited to suspension and/or debarment. The bidder or proposer agrees to comply with the requirements of 2 CFR 200 while this offer is valid and throughout the period of any contract that may arise from this offer. The bidder or proposer further agrees to include a provision requiring such compliance in its lower tier covered transactions.

##### Certification Regarding Lobbying Contract Clause.

By signing and submitting a bid, Bidder certifies, to the best of his or her knowledge and belief, that:

(1) No Federal appropriated funds have been paid or will be paid, by or on behalf of the undersigned, to any person for influencing or attempting to influence an officer or employee of an agency, a Member of Congress, an officer or employee of Congress, or an employee of a Member of Congress in connection with the awarding of any Federal contract, the making of any Federal grant, the making of any Federal loan, the entering into of any cooperative

agreement, and the extension, continuation, renewal, amendment, or modification of any Federal contract, grant, loan, or cooperative agreement.

(2) If any funds other than Federal appropriated funds have been paid or will be paid to any person for influencing or attempting to influence an officer or employee of any agency, a Member of Congress, an officer or employee of Congress, or an employee of a Member of Congress in connection with this Federal contract, grant, loan, or cooperative agreement, the undersigned shall complete and submit Standard Form-LLL, "Disclosure Form to Report Lobbying," in accordance with its instructions.

(3) Bidder shall require that the language of this certification be included in the award documents for all subawards at all tiers (including subcontracts, subgrants, and contracts under grants, loans, and cooperative agreements) and that all subrecipients shall certify and disclose accordingly.

This certification is a material representation of fact upon which reliance was placed when this transaction was made or entered into. Submission of this certification is a prerequisite for making or entering into this transaction imposed by section 1352, title 31, U.S.C. Any person who fails to file the required certification shall be subject to a civil penalty of not less than \$10,000 and not more than \$100,000 for each such failure.

#### Procurement Of Recovered Materials Contract Clause

Contractor and its subcontractors shall comply with section 6002 of the Solid Waste Disposal Act, as amended by the Resource Conservation and Recovery Act, including, but not limited to, the regulatory provisions of 40 CFR Part 247, and Executive Order 12873, as they apply to the procurement of the items designated in Subpart B of 40 CFR Part 247.

Termination. In the event of termination pursuant to Section 006 – General Terms & Conditions, Termination, City shall pay Vendor for conforming goods delivered and services provided prior to the date of termination, offset by any amounts due and owing from Vendor to City.

Venue. In addition to the provisions listed in Section 006 – General Terms & Conditions, Venue, unless this contract provides otherwise, all claims, counterclaims, disputes and other matters in question between City and Vendor arising out of or relating to this agreement or its breach will be decided in a court of competent jurisdiction.

#### STATE GRANT FUNDING REQUIRED AUDITING PROVISION.

If state grant funding is utilized by the City, Contractor agrees: (1) the state auditor may conduct an audit or investigation of any entity receiving funds from the state directly under the contract or indirectly through a subcontract under this contract; (2) acceptance of funds directly under the contract or indirectly through a subcontract under the contract acts as acceptance of the authority of the state auditor, under the direction of the legislative audit committee, to conduct an audit or investigation in connection with those funds; and (3) under the direction of the legislative audit committee, an entity that is the subject of an audit or investigation by the state auditor must provide the state auditor with access to any information the state auditor considers relevant to the investigation or audit.

#### Incorporation of Attachments.

Each of the attachments listed below is an essential part of this contract, which governs the rights and duties of the parties, incorporated herein by reference, and shall be interpreted in the order of priority as appears below, with this document taking priority over all attachments:

Attachment A – Price Schedule

Attachment B – Veteran-Owned Small Business Preference Program Tracking Form

Attachment C – Certificate of Interested Parties (Form 1295)

Attachment D – Working with COSA

## 006 - GENERAL TERMS & CONDITIONS

Electronic Bid Equals Original. If Vendor is submitting an electronic bid, City and Vendor each agree that this transaction may be conducted by electronic means, as authorized by Chapter 322, Texas Business & Commerce Code, known as the Electronic Transactions Act.

### Delivery of Goods/Services.

Destination Contract. Vendor shall deliver all goods and materials F.O.B., City of San Antonio's designated facility, inside delivery, freight prepaid, to the address provided in this IFB or, if different, in the Purchase Order. Vendor shall bear the risk of loss until delivery. Freight charges will be paid only when expedited delivery is requested and approved in writing by the City. Vendor shall be responsible for furnishing necessary personnel or equipment and/or making necessary arrangements to off load at City of San Antonio facility, unless otherwise noted herein.

Failure to Deliver. When delivery is not met as provided for in the contract, City may make the purchase on the open market, with any cost in excess of the contract price paid by Vendor, in addition to any other direct, indirect, consequential, or incidental damages incurred by City as a result thereof. In addition, Vendor may be removed from the City's list of eligible bidders.

Purchase Orders. Each time a City department wishes to place an order against this contract, it will issue Vendor a purchase order. Vendor must have the purchase order before making any delivery.

Acceptance by City. City shall have a reasonable time (but not less than 30 days) after receipt to inspect the goods and services tendered by Vendor. City at its option may reject all or any portion of such goods or services which do not, in City's sole discretion, comply in every respect with all terms and conditions of the contract. City may elect to reject the entire goods and services tendered even if only a portion thereof is nonconforming. If City elects to accept nonconforming goods and services, City, in addition to its other remedies, shall be entitled to deduct a reasonable amount from the price thereof to compensate City for the nonconformity. Any acceptance by City, even if non-conditional, shall not be deemed a waiver or settlement of any defect in such goods and services.

Testing. After award of contract, City may, at its sole option, test the product delivered to ensure it meets specifications. Initial testing shall be at City's expense. However, if the product does not to meet specifications, Vendor shall reimburse City for the costs of testing. City may withhold the cost of testing from any amounts owed to Vendor under this or any other contract, or invoice Vendor for same. If invoiced, Vendor shall pay City within 30 calendar days of the invoice.

Warranty. A minimum of 90-days product guarantee or the manufacturer's standard commercial warranty, whichever is greater, shall apply to all products and/or services purchased under this IFB, unless otherwise specified in the Specifications/Scope of Services section of this IFB. This warranty shall provide for replacement of defective merchandise, parts, and labor, and shall include pick-up of the defective merchandise from City and delivery of the replacement(s) to the same location. The warranty shall be effective from the date of acceptance of the merchandise, or completion of the service, as applicable.

**REJECTION OF DISCLAIMERS OF WARRANTIES & LIMITATIONS OF LIABILITY. ANY TERM OR CONDITION IN ANY DOCUMENT FURNISHED BY VENDOR, DISCLAIMING THE IMPLIED WARRANTY OF MERCHANTABILITY OR OF FITNESS FOR A PARTICULAR PURPOSE, OR ATTEMPTING TO LIMIT VENDOR'S LIABILITY SHALL BE OF NO FORCE OR EFFECT, AND SHALL BE STRICKEN FROM THE CONTRACT DOCUMENTS AS IF NEVER CONTAINED THEREIN.**

### Invoicing and Payment.

Invoice Submissions. City requires all original first time invoices to be submitted directly to the Accounts Payable section of the Finance Department. The preferred method of delivery is electronically to the following e-mail address:

**accounts.payable@sanantonio.gov**

Invoices submitted electronically to the e-mail address above must be in separate .pdf format file. Multiple invoices cannot be submitted in a single .pdf file; however, Vendor may submit multiple, separate invoice files in a single e-mail. Any required documentation in support of the invoice should be compiled directly behind the invoice in the same .pdf file. Each electronically submitted file must have a unique identifying name that is not the same as any other file name.

Invoices submitted by electronic submission are only considered "original" when the submission comes directly from the Vendor to Accounts Payable using this e-mail address. Vendor may courtesy copy the ordering City department personnel on the e-mail.

Vendors not able to submit invoices with the required file formatting above may mail original invoices, on white paper only, to: City of San Antonio, Attn: Accounts Payable, P.O. Box 839976, San Antonio, Texas 78283-3976.

Information Required On Invoice.

All invoices must be in a form and content approved by the City. City may require modification of invoices, if necessary, in order to satisfy City that all billing is proper and pursuant to the terms of the contract. Invoices are required to show each City Purchase Order Number. Invoices must be legible. Items billed on invoices must be specific as to applicable stock, manufacturer, catalog, or part number (if any). All invoices must show unit prices for each item being billed, the quantity of items being billed and the total for each item, as well as the total for all items on the invoice. If prices are based on list prices basis, then the list prices, the percentage discount or percentage surcharge, net unit prices, extensions and net total prices must be shown. Prompt payment discounts offered shall be shown separately on the invoice.

Payment by City.

In accordance with the Texas Prompt Payment Act, City shall have not less than 30 days to pay for goods or services. Time for payment, including payment under discount terms, will be computed from the later of: (1) the date City receives conforming goods under the contract; (2) the date performance of the service under the contract is completed; or (3) the date City receives a correct and valid invoice for the goods or services. Payment is deemed to be made on the date of mailing of the check. Payment is made in US dollars only.

This provision shall not apply where there is a bona fide dispute between City and Vendor about the goods delivered or the service performed that causes the payment to be late, or where the invoice is not mailed to the address provided herein.

The payment amount due on invoices may not be manually altered by City personnel. Once disputed items are reconciled, Vendor must submit a corrected invoice or a credit memorandum for the disputed amount.

**NECESSITY OF TIMELY INVOICE / WAIVER OF PAYMENT.** NOTWITHSTANDING THE FORGOING, THE CITY CANNOT PAY FOR ANY GOODS OR SERVICES WITHOUT AN INVOICE. VENDOR MUST INVOICE CITY NO LATER THAN 90 CALENDAR DAYS FROM THE DATE GOODS ARE DELIVERED OR SERVICES RENDERED. FAILURE TO SUBMIT AN INVOICE WITHIN SAID 90 DAYS SHALL NEGATE ANY LIABILITY ON THE PART OF CITY AND CONSTITUTE A **WAIVER** BY VENDOR OF ANY AND ALL RIGHT OR CLAIMS TO COLLECT MONEYS THAT VENDOR MAY RIGHTFULLY BE OTHERWISE ENTITLED TO FOR GOODS OR SERVICES PERFORMED.

The total price for all goods and/or services is shown on the Price Schedule. No additional fees or expenses of Vendor shall be charged by Vendor nor be payable by City. The parties hereby agree that all compensable expenses of Vendor are shown on the Price Schedule. If there is a discrepancy on the Price Schedule between the unit price for an item, and the extended price, the unit price shall govern.

Change Orders. In order to comply with Texas law governing purchases made by municipalities, the following rules shall govern all change orders made under this contract.

Any change orders that become necessary during the term of this contract as a result of changes in plans, specifications, quantity of work to be performed, materials, equipment or supplies to be furnished must be in writing and conform to the requirements of City Ordinance 2011-12-08-1014, as hereafter amended.

Any other change will require approval of the City Council, City of San Antonio.

Changes that do not involve an increase in contract price may be made by the Director.

No oral statement of any person shall modify or otherwise change, or affect the terms, conditions or specifications stated herein.

## Termination.

Termination-Breach. Should Vendor fail to fulfill in a timely and proper manner, as determined solely by the Director, its material obligations under this contract, or violate any of the material terms of this contract, City shall have the right to immediately terminate the contract in whole or in part. Notice of termination shall be provided in writing to Vendor, effective upon the date set forth in the notice. City may, in City's sole discretion, provide an opportunity for Vendor to cure the default. If City elects to offer an opportunity to cure, City shall provide notice to Vendor specifying the matters in default and the cure period. If Vendor fails to cure the default within the cure period, City shall have the right, without further notice, to terminate the contract in whole or in part. Such termination shall not relieve Vendor of any liability to the City for damages sustained by virtue of any breach by Vendor.

Termination-Notice. City may terminate this contract, in whole or in part, without cause. City shall be required to give Vendor notice ten days prior to the date of termination of the contract without cause.

Termination-Funding. City retains the right to terminate this contract at the expiration of each of City's budget periods. This contract is conditioned on a best efforts attempt by City to obtain and appropriate funds for payment of any debt due by City herein.

Termination by City may be effected by Director, without further action by the San Antonio City Council.

Independent Contractor. Vendor covenants and agrees that it is an independent contractor and not an officer, agent, servant, or employee of City. City shall not be liable for any claims which may be asserted by any third party occurring in connection with the services to be performed by Vendor under this contract and that Vendor has no authority to bind City. The doctrine of respondeat superior shall not apply as between City and Vendor.

## INDEMNIFICATION.

**VENDOR covenants and agrees to FULLY INDEMNIFY, DEFEND and HOLD HARMLESS, CITY and the elected officials, employees, officers, directors, volunteers and representatives of CITY, individually and collectively, from and against any and all costs, claims, liens, damages, losses, expenses, fees, fines, penalties, proceedings, actions, demands, causes of action, liability and suits of any kind and nature, including but not limited to, personal or bodily injury, death and property damage, made upon CITY directly or indirectly arising out of, resulting from or related to VENDOR'S activities under this Agreement, including any acts or omissions of VENDOR, any agent, officer, director, representative, employee, consultant or subcontractor of VENDOR, and their respective officers, agents employees, directors and representatives while in the exercise of the rights or performance of the duties under this Agreement. The indemnity provided for in this paragraph shall not apply to any liability resulting from the negligence of CITY, its officers, or employees, in instances where such negligence causes personal injury, death, or property damage. IN THE EVENT VENDOR AND CITY ARE FOUND JOINTLY LIABLE BY A COURT OF COMPETENT JURISDICTION, LIABILITY SHALL BE APPORTIONED COMPARATIVELY IN ACCORDANCE WITH THE LAWS FOR THE STATE OF TEXAS, WITHOUT, HOWEVER, WAIVING ANY GOVERNMENTAL IMMUNITY AVAILABLE TO THE CITY UNDER TEXAS LAW AND WITHOUT WAIVING ANY DEFENSES OF THE PARTIES UNDER TEXAS LAW. In addition, Vendor agrees to indemnify, defend, and hold the City harmless from any claim involving patent infringement, trademarks, trade secrets, and copyrights on goods supplied.**

The provisions of this INDEMNITY are solely for the benefit of the parties hereto and not intended to create or grant any rights, contractual or otherwise, to any other person or entity. VENDOR shall advise CITY in writing within 24 hours of any claim or demand against CITY or VENDOR known to VENDOR related to or arising out of VENDOR's activities under this AGREEMENT and shall see to the investigation and defense of such claim or demand at VENDOR's cost. CITY shall have the right, at its option and at its own expense, to participate in such defense without relieving VENDOR of any of its obligations under this paragraph.

Assignment. Except as otherwise stated herein, Vendor may not sell, assign, pledge, transfer or convey any interest in this contract, nor delegate the performance of any duties hereunder, by transfer, by subcontracting or any other means, without the consent of Director. As a condition of such consent, if such consent is granted, Vendor shall remain liable for completion of the services and provision of goods outlined in this contract in the event of default by the successor Vendor, assignee, transferee, or subcontractor. Any attempt to transfer, pledge or otherwise assign this Contract without said written approval, shall be void ab initio and shall confer no rights upon any third person.

Ownership of Documents. Pursuant to Texas Local Government Code Chapter 201, any and all Records produced by Vendor pursuant to the provisions of this contract are the exclusive property of City; and no such Record shall be the subject of any copyright or proprietary claim by Vendor. The term "Record" as used herein shall mean any document, paper, letter,

book, map, photograph, sound or video recording, microfilm, magnetic tape, electronic medium, or other information recording medium, regardless of physical form or characteristic. Vendor understands and acknowledges that as the exclusive owner of any and all such Records, City has the right to use all such Records as City desires, without restriction.

#### Records Retention.

Vendor and its subcontractors, if any, shall properly, accurately and completely maintain all documents, papers, and records, and other evidence pertaining to the services rendered hereunder ("Documents"), and shall make such Documents available to the City at their respective offices, at all reasonable times and as often as City may deem necessary during the contract period, including any extension or renewal hereof, and the record retention period established herein, for purposes of audit, inspection, examination, and making excerpts or copies of same by City and any of its authorized representatives.

Vendor shall retain any and all Documents produced as a result of services provided hereunder for a period of four years ("Retention Period") from the date of termination of the contract. If, at the end of the Retention Period, there is litigation or other questions arising from, involving, or concerning these Documents or the services provided hereunder, Vendor shall retain the records until the resolution of such litigation or other such questions. Vendor acknowledges and agrees that City shall have access to any and all such Documents at any and all times, as deemed necessary by City, during said Retention Period. City may, at its election, require Vendor to return the documents to City at Vendor's expense prior to or at the conclusion of the Retention Period. In such event, Vendor may retain a copy of the documents.

Vendor shall notify City, immediately, in the event Vendor receives any requests for information from a third party, which pertain to the Documents referenced herein. Vendor understands and agrees that City will process and handle all such requests.

Disclosure Requirements for Certain Government Contracts. For contracts (1) with a stated expenditure of at least \$1 million in public funds for the purchase of goods or services by the City, or (2) that result in the expenditure of at least \$1 million in public funds for the purchase of goods or services by the City in a given fiscal year, Vendor acknowledges that the requirements of the Texas Public Information Act, Government Code, Chapter 552, Subchapter J, pertaining to the preservation and disclosure of Contracting Information maintained by the City or sent between the City and a vendor, contractor, potential vendor, or potential contractor, may apply to this bid and any resulting contract. Vendor agrees that the contract can be terminated if Vendor knowingly or intentionally fails to comply with a requirement of that subchapter.

By submitting a bid, Bidder warrants and certifies, and a contract awarded pursuant to this IFB is made in reliance thereon, that it, has not knowingly or intentionally failed to comply with this subchapter in a previous bid or contract. City hereby relies on Vendor's certification, and if found to be false, City may reject the bid or terminate the Contract for material breach.

Severability. If any clause or provision of this contract is held invalid, illegal or unenforceable under present or future federal, state or local laws, including but not limited to the City Charter, City Code, or ordinances of the City of San Antonio, Texas, then and in that event it is the intention of the parties hereto that such invalidity, illegality or unenforceability shall not affect any other clause or provision hereof and that the remainder of this contract shall be construed as if such invalid, illegal or unenforceable clause or provision was never contained herein. It is also the intention of the parties hereto that in lieu of each clause or provision of this contract that is invalid, illegal, or unenforceable, there be added as a part of the contract a clause or provision as similar in terms to such invalid, illegal or unenforceable clause or provision as may be possible, legal, valid, and enforceable.

Compliance with Law. Vendor shall provide and perform all services required under this Agreement in compliance with all applicable federal, state, and local laws, rules, and regulations.

Certifications. Vendor warrants and certifies that Vendor and any other person designated to provide services hereunder has the requisite training, license and/or certification to provide said services, and meets all competence standards promulgated by all other authoritative bodies, as applicable to the services provided herein.

Non-waiver of Performance. Unless otherwise specifically provided for in this Agreement, a waiver by either Party of a breach of any of the terms, conditions, covenants, or guarantees of this Agreement shall not be construed or held to be a waiver of any succeeding or preceding breach of the same or any other term, condition, covenant or guarantee herein contained. Further, any failure of either Party to insist in any one or more cases upon the strict performance of any of the covenants of this Agreement, or to exercise any option herein contained, shall in no event be construed as a waiver or relinquishment for the future of such covenant or option. In fact, no waiver, change, modification, or discharge by either party hereto of any provision of this Agreement shall be deemed to have been made or shall be effective unless expressed in writing and signed by the party to be charged. No act or omission by a Party shall in any manner impair or prejudice any

right, power, privilege, or remedy available to that Party hereunder or by law or in equity, such rights, powers, privileges, or remedies to be always specifically preserved hereby.

**Venue.** Venue of any court action brought directly or indirectly by reason of this contract shall be in Bexar County, Texas. This contract is made and is to be performed in Bexar County, Texas, and is governed by the laws of the State of Texas.

**Non-discrimination.** As a condition of entering into this agreement, Vendor represents and warrants that it will comply with City's Commercial Nondiscrimination Policy, as described under Section III.C.1 of the SBEDA Ordinance. As part of such compliance, Vendor shall not discriminate on the basis of race, color, religion, ancestry or national origin, sex, age, marital status, sexual orientation, or on the basis of disability or other unlawful forms of discrimination in the solicitation, selection, hiring or commercial treatment of subcontractors, vendors, suppliers, or commercial customers, nor shall Vendor retaliate against any person for reporting instances of such discrimination. Vendor shall provide equal opportunity for subcontractors, vendors, and suppliers to participate in all of its public sector and private sector subcontracting and supply opportunities, provided that nothing contained in this clause shall prohibit or limit otherwise lawful efforts to remedy the effects of marketplace discrimination that have occurred or are occurring in the City's Relevant Marketplace. Vendor understands and agrees that a material violation of this clause shall be considered a material breach of this agreement and may result in termination of this agreement, disqualification of Vendor from participating in City contracts, or other sanctions. This clause is not enforceable by or for the benefit of, and creates no obligation to, any third party. Vendor shall include this nondiscrimination clause in all subcontracts for the performance of this contract.

As a party to this contract, Vendor understands and agrees to comply with the *Non-Discrimination Policy* of the City of San Antonio contained in Chapter 2, Article X of the City Code and further, shall not discriminate on the basis of race, color, religion, national origin, sex, sexual orientation, gender identity, veteran status, age, or disability, unless exempted by state or federal law, or as otherwise established herein.

**Attorney's Fees.** The Parties hereto expressly agree that, in the event of litigation, each party hereby waives its right to payment of attorneys' fees.

**State Prohibitions on Contracts:**

This section only applies to a contract that:

- (1) is between a governmental entity and a company with 10 or more full-time employees; and
- (2) has a value of \$100,000 or more that is to be paid wholly or partly from public funds of the governmental entity.

"Company" means a for-profit organization, association, corporation, partnership, joint venture, limited partnership, limited liability partnership, or limited liability company, including a wholly owned subsidiary, majority-owned subsidiary, parent company, or affiliate of those entities or business associations that exists to make a profit. This term does not include a sole proprietorship.

**Prohibition on Contracts with Companies Boycotting Israel.**

Texas Government Code §2271.002 provides that a governmental entity may not enter into a contract with a company for goods or services, unless the contract contains a written verification from the company that it: (1) does not boycott Israel; and (2) will not boycott Israel during the term of the contract.

"Boycott Israel" means refusing to deal with, terminating business activities with, or otherwise taking any action that is intended to penalize, inflict economic harm on, or limit commercial relations specifically with Israel, or with a person or entity doing business in Israel or in an Israeli-controlled territory, but does not include an action made for ordinary business purposes.

By submitting an offer to or executing contract documents with the City of San Antonio, Company hereby verifies that it does not boycott Israel, and will not boycott Israel during the term of the contract. City hereby relies on Company's verification. If found to be false, City may terminate the contract for material breach.

**Prohibition on Contracts with Companies Boycotting Certain Energy Companies.**

Texas Government Code §2274 provides that a governmental entity may not enter into a contract with a company for goods or services, unless the contract contains a written verification from the company that it: (1) does not boycott energy companies; and (2) will not boycott energy companies during the term of the contract.

"Boycott energy company" means, without an ordinary business purpose, refusing to deal with, terminating business

activities with, or otherwise taking any action that is intended to penalize, inflict economic harm on, or limit commercial relations with a company because the company: (A) engages in the exploration, production, utilization, transportation, sale, or manufacturing of fossil fuel-based energy and does not commit or pledge to meet environmental standards beyond applicable federal and state law; or (B) does business with a company described in (A).

By submitting an offer to or executing contract documents with the City of San Antonio, Company hereby verifies that it does not boycott energy companies and will not boycott energy companies during the term of the contract. City hereby relies on Company's verification. If found to be false, City may terminate the contract for material breach.

Prohibition on Contracts with Companies that Discriminate Against Firearm and Ammunition Industries.

Texas Government Code §2274 provides that a governmental entity may not enter into a contract with a company for goods or services, unless the contract contains a written verification from the company that it: (1) does not have a practice, policy, guidance, or directive that discriminates against a firearm entity or firearm trade association; and (2) will not discriminate during the term of the contract against a firearm entity or firearm trade association.

"Discriminate against a firearm entity or firearm trade association": (A) means, with respect to the entity or association, to: (i) refuse to engage in the trade of any goods or services with the entity or association based solely on its status as a firearm entity or firearm trade association; (ii) refrain from continuing an existing business relationship with the entity or association based solely on its status as a firearm entity or firearm trade association; or (iii) terminate an existing business relationship with the entity or association based solely on its status as a firearm entity or firearm trade association.

By submitting an offer to or executing contract documents with the City of San Antonio, Company hereby verifies that it does not have a practice, policy, guidance, or directive that discriminates against a firearm entity or firearm trade association; and will not discriminate during the term of the contract against a firearm entity or firearm trade association. City hereby relies on Company's verification. If found to be false, City may terminate the contract for material breach.

CONTRACTS WITH COMPANIES ENGAGED IN BUSINESS WITH IRAN, SUDAN, OR FOREIGN TERRORIST ORGANIZATIONS PROHIBITED. Texas Government Code §2252.152 provides that a governmental entity may not enter into a governmental contract with a company that is identified on a list prepared and maintained under Texas Government Code §§2270.0201 or 2252.153. Vendor hereby certifies that it is not identified on such a list. City hereby relies on Vendor's certification. If found to be false, or if Vendor is identified on said list during the course of its contract with City, City may terminate the Contract for material breach.

Delinquent Taxes. In the event that Vendor is or subsequently becomes delinquent in the payment of taxes owed to the City of San Antonio, the City reserves the right to deduct any delinquent taxes from payments that the City may owe to the delinquent Vendor as a result of this contract.

Binding Contract. This contract shall be binding on and inure to the benefit of the parties hereto and their respective heirs, executors, administrators, legal representatives, and successors and assigns, except as otherwise expressly provided for herein.

Entire Agreement. This contract, including City's final electronically posted online version, together with its authorizing ordinance and its price schedule(s), addendums, attachments, purchase orders, and exhibits, if any, constitutes the final and entire agreement between the parties hereto and contains all of the terms and conditions agreed upon. No other agreements, oral or otherwise, regarding the subject matter of this contract shall be deemed to exist or to bind the parties hereto, unless same be in writing, dated subsequent to the date hereof, and be duly executed by the parties, in accordance with the Change Order provision herein. **Parties agree that City's final electronically posted online version of this solicitation contains the agreed upon specifications, scope of services, and terms and conditions of this contract, and shall control in the event of a conflict with any printed version signed and submitted by Vendor.**

**007 - SIGNATURE PAGE**

By submitting a bid, Bidder represents that:

(s)he is authorized to bind Bidder to fully comply with the terms and conditions of City's Invitation for Bid for the prices stated therein;

(s)he has read the entire document, including the final version issued by City, and agreed to the terms therein;

Bidder is in good standing with the Texas State Comptroller's Office; and

to the best of his/her knowledge, all information is true and correct.

Complete the following and sign on the signature line below. Failure to sign and submit this Signature Page will result in rejection of your bid.

Bidder Information:

Please Print or Type:

Bidder Information:

Please Print or Type:

Vendor ID No.: \_\_\_\_\_

Signer's Name: \_\_\_\_\_

Name of Business: \_\_\_\_\_

Street Address: \_\_\_\_\_

City, State, Zip Code: \_\_\_\_\_

Email Address: \_\_\_\_\_

Telephone No.: \_\_\_\_\_

Fax No.: \_\_\_\_\_

City's Solicitation No.: 6100018098 Medium and Heavy-Duty Trucks

\_\_\_\_\_  
Signature of Person Authorized to Sign Bid

## 008 - STANDARD DEFINITIONS

Whenever a term defined by the Uniform Commercial Code (“UCC”), as enacted by the State of Texas, is used in the Contract, the UCC definition shall control, unless otherwise defined in the Contract.

All-or-None Bid - an invitation to bid in which the City will award the entire contract to one bidder only.

Alternate Bid - two or more bids with substantive variations in the item or service offered from the same bidder in response to a solicitation.

Assignment - a transfer of claims, rights or interests in goods, services, or property.

Bid - a complete, signed response to a solicitation. The term “bid” is synonymous with the term “offer”.

Bid Opening - a public meeting during which bid responses are disclosed.

Bidder - a person, firm or entity that submits a bid in response to a solicitation. The bidder whose bid is accepted by City may also be referred to herein as Contractor, Vendor or Supplier.

Bid Bond or Bid Guarantee - security to ensure that Bidder (a) will not withdraw the bid within the period specified for acceptance, and (b) will furnish any required bonds or performance guarantees, and any necessary insurance within the time specified in the solicitation.

Change Order - a change to the plans or specifications of the contract, or an increase or decrease in the quantity of work to be performed or of materials, equipment, or supplies to be furnished, issued by the Director after the bid has been accepted by the City.

City - the City of San Antonio, a Texas home-rule municipal corporation.

Contract - the binding legal agreement between the City and Vendor.

Contractor - the bidder whose bid is accepted by the City and is, therefore, the person, firm or entity providing goods or services to the City under a contract.

Director – the Director of City’s Finance Department - Procurement Division, or Director’s designee.

Equal or Equivalent - terms to indicate that similar products or other brands may be acceptable for purchase if specifications and functional requirements are met.

Invitation for Bid (IFB) – a solicitation requesting pricing for a specified good or a service.

Line Item - a listing of items in a bid for which a bidder is expected to provide separate pricing.

Low Bid - a bid which is lowest in price, but may not meet all requirements or specifications.

Lowest Responsible Bidder - the bidder whose bid meets all requirements of the specifications, terms, and conditions of the IFB and results in the lowest cost to the City in an award based solely on price, taking into consideration the bidder’s competence and qualifications to perform the contract.

Non-Responsive Bid - a bid or offer that does not comply with the terms and conditions, or specifications and/or requirements of the IFB.

Offer - a complete, signed response to an IFB that, if accepted, would bind the bidder to perform the resultant contract. The term “offer” is synonymous with the term “bid”.

Payment Bond - a particular form of security provided by the contractor to protect the City against loss due to the contractor’s failure to pay suppliers and subcontractors.

Performance Bond - a particular form of security provided by the contractor to protect the City against loss due to the contractor’s inability or unwillingness to complete the contract as agreed.

Performance Deposit - security provided by the contractor to protect the City against loss due to the contractor's inability or unwillingness to complete the contract as agreed.

Pre-Submittal Conference - a meeting conducted by the City, held in order to allow bidders to ask questions about the proposed contract and particularly, the contract specifications.

Purchase Order - a validly issued order placed by an authorized City department for the purchase of goods or services, written on the City's standard purchase order form, and which is Vendor's authority to deliver to and invoice the City for the goods or services specified in an IFB for the price stated in Vendor's bid.

Responsible Bidder - a bidder who is known to have the necessary competence and qualifications to perform and provide all requirements of an intended contract.

Responsive Bidder - a bidder who tenders a bid which meets all requirements of the invitation to bid and is a responsible bidder.

Sealed Bid - a bid submitted as a sealed document electronic, by a prescribed time to the location indicated in the IFB. The contents of the bid will not be made public prior to the bid opening.

Specifications - a description of what the City requires and what the bidder must offer, a description of the physical or functional characteristics of a product or material, or the nature of a service or construction item.

Subcontractor - a person, firm or entity providing goods or services to a vendor to be used in the performance of the Vendor's obligations under the contract with the City.

Supplier - the bidder whose bid is accepted by the City and is, therefore, the person, firm or entity providing goods or services to the City under a contract.

Vendor - the bidder whose bid is accepted by the City and is, therefore, the person, firm or entity providing goods or services to the City under a contract.

Waiver of Irregularity - noting, but disregarding an immaterial variance within a bid.

009 - ATTACHMENTS

**ATTACHMENT A: PRICE SCHEDULE – REVISION 1, DATED JUNE 17, 2024**

ITEM PRICING

ITEM	QUANTITY	DESCRIPTION
1	1	1 Ton Full Four Door, DRW, 4x4 Pickup Truck w/ Gooseneck Hitch

PRICE EACH: \$ \_\_\_\_\_

TOTAL: \$ \_\_\_\_\_

YEAR, MAKE & MODEL OF OFFERED:

\_\_\_\_\_

SPECIFIC MAKE & MODEL OF ENGINE OFFERED (INCLUDE SAE NET HP):

\_\_\_\_\_

TRANSMISSION OFFERED:

\_\_\_\_\_

WARRANTY:

\_\_\_\_\_

WARRANTY SERVICE PROVIDER FACILITY NAME:

\_\_\_\_\_

\_\_\_\_\_

WARRANTY SERVICE PROVIDER FACILITY ADDRESS:

\_\_\_\_\_

\_\_\_\_\_

DELIVERY WILL BE MADE WITHIN \_\_\_\_\_ CALENDER DAYS AFTER ISSUANCE OF PURCHASE ORDER.

PRODUCTION CUT-OFF DATE FOR YEAR MODEL OFFERED: \_\_\_\_\_

INDICATE THE LAST DAY THAT THE CITY CAN PLACE ORDERS UNDER THIS CONTRACT WITHOUT MISSING THE PRODUCTION CUT OFF DATE: \_\_\_\_\_.

BID PRICES SHALL REMAIN FIRM FOR ALL ORDERS PLACED PRIOR TO THIS CUT OFF DATE. IN THE EVENT THAT CITY DOES NOT AWARD A CONTRACT PRIOR TO PRODUCTION CUT OFF DATE, CAN BIDDER PROVIDE BID ITEMS, AT THE BID PRICE SUBMITTED, AFTER THE PRODUCTION CUT OFF DATE? (YES/NO) \_\_\_\_\_

ITEM

QUANTITY

DESCRIPTION

2

4

1 Ton, Regular Cab, 84" Cab to Axle, DRW 4x2 Flat/Stake Bed  
Truck with Lift Gate

PRICE EACH: \$ \_\_\_\_\_

TOTAL: \$ \_\_\_\_\_

YEAR, MAKE & MODEL OF OFFERED:

\_\_\_\_\_

SPECIFIC MAKE & MODEL OF ENGINE OFFERED (INCLUDE SAE NET HP):

\_\_\_\_\_

TRANSMISSION OFFERED:

\_\_\_\_\_

WARRANTY:

\_\_\_\_\_

WARRANTY SERVICE PROVIDER FACILITY NAME:

\_\_\_\_\_

\_\_\_\_\_

WARRANTY SERVICE PROVIDER FACILITY ADDRESS:

\_\_\_\_\_

\_\_\_\_\_

DELIVERY WILL BE MADE WITHIN \_\_\_\_\_ CALENDER DAYS AFTER ISSUANCE OF PURCHASE ORDER.

PRODUCTION CUT-OFF DATE FOR YEAR MODEL OFFERED: \_\_\_\_\_

INDICATE THE LAST DAY THAT THE CITY CAN PLACE ORDERS UNDER THIS CONTRACT WITHOUT MISSING THE  
PRODUCTION CUT OFF DATE: \_\_\_\_\_.

BID PRICES SHALL REMAIN FIRM FOR ALL ORDERS PLACED PRIOR TO THIS CUT OFF DATE. IN THE EVENT THAT  
CITY DOES NOT AWARD A CONTRACT PRIOR TO PRODUCTION CUT OFF DATE, CAN BIDDER PROVIDE BID  
ITEMS, AT THE BID PRICE SUBMITTED, AFTER THE PRODUCTION CUT OFF DATE? (YES/NO) \_\_\_\_\_

**ITEM**

**QUANTITY**

**DESCRIPTION**

**3**

**1**

**Class 5, Crew Cab, 12ft Stake/Flat Bed Truck**

Option A Custom Color – FAA Yellow PRICE EACH: \$ \_\_\_\_\_

OPTION A CUSTOM COLOR TOTAL \$ \_\_\_\_\_

Option B OEM Color – White PRICE EACH \$ \_\_\_\_\_

OPTION B OEM COLOR TOTAL \_\_\_\_\_

YEAR, MAKE & MODEL OF OFFERED:

\_\_\_\_\_

SPECIFIC MAKE & MODEL OF ENGINE OFFERED (INCLUDE SAE NET HP):

\_\_\_\_\_

TRANSMISSION OFFERED:

\_\_\_\_\_

WARRANTY:

\_\_\_\_\_

WARRANTY SERVICE PROVIDER FACILITY NAME:

\_\_\_\_\_

\_\_\_\_\_

WARRANTY SERVICE PROVIDER FACILITY ADDRESS:

\_\_\_\_\_

\_\_\_\_\_

DELIVERY WILL BE MADE WITHIN \_\_\_\_\_ CALENDER DAYS AFTER ISSUANCE OF PURCHASE ORDER.

PRODUCTION CUT-OFF DATE FOR YEAR MODEL OFFERED: \_\_\_\_\_

INDICATE THE LAST DAY THAT THE CITY CAN PLACE ORDERS UNDER THIS CONTRACT WITHOUT MISSING THE PRODUCTION CUT OFF DATE: \_\_\_\_\_.

BID PRICES SHALL REMAIN FIRM FOR ALL ORDERS PLACED PRIOR TO THIS CUT OFF DATE. IN THE EVENT THAT CITY DOES NOT AWARD A CONTRACT PRIOR TO PRODUCTION CUT OFF DATE, CAN BIDDER PROVIDE BID ITEMS, AT THE BID PRICE SUBMITTED, AFTER THE PRODUCTION CUT OFF DATE? (YES/NO) \_\_\_\_\_

ITEM

QUANTITY

DESCRIPTION

4

1

Class 6 Cabover min. 14' Box Truck with Lift Gate

PRICE EACH: \$ \_\_\_\_\_

TOTAL: \$ \_\_\_\_\_

YEAR, MAKE & MODEL OF OFFERED:

\_\_\_\_\_

SPECIFIC MAKE & MODEL OF ENGINE OFFERED (INCLUDE SAE NET HP):

\_\_\_\_\_

TRANSMISSION OFFERED:

\_\_\_\_\_

WARRANTY:

\_\_\_\_\_

WARRANTY SERVICE PROVIDER FACILITY NAME:

\_\_\_\_\_

\_\_\_\_\_

WARRANTY SERVICE PROVIDER FACILITY ADDRESS:

\_\_\_\_\_

\_\_\_\_\_

DELIVERY WILL BE MADE WITHIN \_\_\_\_\_ CALENDER DAYS AFTER ISSUANCE OF PURCHASE ORDER.

PRODUCTION CUT-OFF DATE FOR YEAR MODEL OFFERED: \_\_\_\_\_

INDICATE THE LAST DAY THAT THE CITY CAN PLACE ORDERS UNDER THIS CONTRACT WITHOUT MISSING THE PRODUCTION CUT OFF DATE: \_\_\_\_\_.

BID PRICES SHALL REMAIN FIRM FOR ALL ORDERS PLACED PRIOR TO THIS CUT OFF DATE. IN THE EVENT THAT CITY DOES NOT AWARD A CONTRACT PRIOR TO PRODUCTION CUT OFF DATE, CAN BIDDER PROVIDE BID ITEMS, AT THE BID PRICE SUBMITTED, AFTER THE PRODUCTION CUT OFF DATE? (YES/NO) \_\_\_\_\_

**ITEM**

**QUANTITY**

**DESCRIPTION**

**5**

**3**

**25K GVWR Landscaping Dump Truck**

PRICE EACH: \$ \_\_\_\_\_

TOTAL: \$ \_\_\_\_\_

YEAR, MAKE & MODEL OF OFFERED:

\_\_\_\_\_

SPECIFIC MAKE & MODEL OF ENGINE OFFERED (INCLUDE SAE NET HP):

\_\_\_\_\_

TRANSMISSION OFFERED:

\_\_\_\_\_

WARRANTY:

\_\_\_\_\_

WARRANTY SERVICE PROVIDER FACILITY NAME:

\_\_\_\_\_

\_\_\_\_\_

WARRANTY SERVICE PROVIDER FACILITY ADDRESS:

\_\_\_\_\_

\_\_\_\_\_

DELIVERY WILL BE MADE WITHIN \_\_\_\_\_ CALENDER DAYS AFTER ISSUANCE OF PURCHASE ORDER.

PRODUCTION CUT-OFF DATE FOR YEAR MODEL OFFERED: \_\_\_\_\_

INDICATE THE LAST DAY THAT THE CITY CAN PLACE ORDERS UNDER THIS CONTRACT WITHOUT MISSING THE PRODUCTION CUT OFF DATE: \_\_\_\_\_.

BID PRICES SHALL REMAIN FIRM FOR ALL ORDERS PLACED PRIOR TO THIS CUT OFF DATE. IN THE EVENT THAT CITY DOES NOT AWARD A CONTRACT PRIOR TO PRODUCTION CUT OFF DATE, CAN BIDDER PROVIDE BID ITEMS, AT THE BID PRICE SUBMITTED, AFTER THE PRODUCTION CUT OFF DATE? (YES/NO) \_\_\_\_\_

ITEM

QUANTITY

DESCRIPTION

6

2

35K lbs. GVWR Water Distribution Truck

PRICE EACH: \$ \_\_\_\_\_

TOTAL: \$ \_\_\_\_\_

YEAR, MAKE & MODEL OF OFFERED:

\_\_\_\_\_

SPECIFIC MAKE & MODEL OF ENGINE OFFERED (INCLUDE SAE NET HP):

\_\_\_\_\_

TRANSMISSION OFFERED:

\_\_\_\_\_

WARRANTY:

\_\_\_\_\_

WARRANTY SERVICE PROVIDER FACILITY NAME:

\_\_\_\_\_

\_\_\_\_\_

WARRANTY SERVICE PROVIDER FACILITY ADDRESS:

\_\_\_\_\_

\_\_\_\_\_

DELIVERY WILL BE MADE WITHIN \_\_\_\_\_ CALENDER DAYS AFTER ISSUANCE OF PURCHASE ORDER.

PRODUCTION CUT-OFF DATE FOR YEAR MODEL OFFERED: \_\_\_\_\_

INDICATE THE LAST DAY THAT THE CITY CAN PLACE ORDERS UNDER THIS CONTRACT WITHOUT MISSING THE PRODUCTION CUT OFF DATE: \_\_\_\_\_.

BID PRICES SHALL REMAIN FIRM FOR ALL ORDERS PLACED PRIOR TO THIS CUT OFF DATE. IN THE EVENT THAT CITY DOES NOT AWARD A CONTRACT PRIOR TO PRODUCTION CUT OFF DATE, CAN BIDDER PROVIDE BID ITEMS, AT THE BID PRICE SUBMITTED, AFTER THE PRODUCTION CUT OFF DATE? (YES/NO) \_\_\_\_\_

**ITEM**

**QUANTITY**

**DESCRIPTION**

**7**

**3**

**52K lbs. GVWR, 12 Cubic Yard Dump Truck**

PRICE EACH: \$ \_\_\_\_\_

TOTAL: \$ \_\_\_\_\_

YEAR, MAKE & MODEL OF OFFERED:

\_\_\_\_\_

SPECIFIC MAKE & MODEL OF ENGINE OFFERED (INCLUDE SAE NET HP):

\_\_\_\_\_

TRANSMISSION OFFERED:

\_\_\_\_\_

WARRANTY:

\_\_\_\_\_

WARRANTY SERVICE PROVIDER FACILITY NAME:

\_\_\_\_\_

\_\_\_\_\_

WARRANTY SERVICE PROVIDER FACILITY ADDRESS:

\_\_\_\_\_

\_\_\_\_\_

DELIVERY WILL BE MADE WITHIN \_\_\_\_\_ CALENDER DAYS AFTER ISSUANCE OF PURCHASE ORDER.

PRODUCTION CUT-OFF DATE FOR YEAR MODEL OFFERED: \_\_\_\_\_

INDICATE THE LAST DAY THAT THE CITY CAN PLACE ORDERS UNDER THIS CONTRACT WITHOUT MISSING THE PRODUCTION CUT OFF DATE: \_\_\_\_\_.

BID PRICES SHALL REMAIN FIRM FOR ALL ORDERS PLACED PRIOR TO THIS CUT OFF DATE. IN THE EVENT THAT CITY DOES NOT AWARD A CONTRACT PRIOR TO PRODUCTION CUT OFF DATE, CAN BIDDER PROVIDE BID ITEMS, AT THE BID PRICE SUBMITTED, AFTER THE PRODUCTION CUT OFF DATE? (YES/NO) \_\_\_\_\_

**ITEM**

**QUANTITY**

**DESCRIPTION**

**8**

**5**

**60K lbs. GVWR 5th Wheel Tractor Truck**

PRICE EACH: \$ \_\_\_\_\_

TOTAL: \$ \_\_\_\_\_

YEAR, MAKE & MODEL OF OFFERED:

\_\_\_\_\_

SPECIFIC MAKE & MODEL OF ENGINE OFFERED (INCLUDE SAE NET HP):

\_\_\_\_\_

TRANSMISSION OFFERED:

\_\_\_\_\_

WARRANTY:

\_\_\_\_\_

WARRANTY SERVICE PROVIDER FACILITY NAME:

\_\_\_\_\_

\_\_\_\_\_

WARRANTY SERVICE PROVIDER FACILITY ADDRESS:

\_\_\_\_\_

\_\_\_\_\_

DELIVERY WILL BE MADE WITHIN \_\_\_\_\_ CALENDER DAYS AFTER ISSUANCE OF PURCHASE ORDER.

PRODUCTION CUT-OFF DATE FOR YEAR MODEL OFFERED: \_\_\_\_\_

INDICATE THE LAST DAY THAT THE CITY CAN PLACE ORDERS UNDER THIS CONTRACT WITHOUT MISSING THE PRODUCTION CUT OFF DATE: \_\_\_\_\_.

BID PRICES SHALL REMAIN FIRM FOR ALL ORDERS PLACED PRIOR TO THIS CUT OFF DATE. IN THE EVENT THAT CITY DOES NOT AWARD A CONTRACT PRIOR TO PRODUCTION CUT OFF DATE, CAN BIDDER PROVIDE BID ITEMS, AT THE BID PRICE SUBMITTED, AFTER THE PRODUCTION CUT OFF DATE? (YES/NO) \_\_\_\_\_

**ITEM**

**QUANTITY**

**DESCRIPTION**

**9**

**9**

**Cab and Chassis with Roll Off Hoist and Tarp System -  
Min. 66K GVWR**

PRICE EACH: \$ \_\_\_\_\_

TOTAL: \$ \_\_\_\_\_

YEAR, MAKE & MODEL OF OFFERED:

\_\_\_\_\_

SPECIFIC MAKE & MODEL OF ENGINE OFFERED (INCLUDE SAE NET HP):

\_\_\_\_\_

TRANSMISSION OFFERED:

\_\_\_\_\_

WARRANTY:

\_\_\_\_\_

WARRANTY SERVICE PROVIDER FACILITY NAME:

\_\_\_\_\_

\_\_\_\_\_

WARRANTY SERVICE PROVIDER FACILITY ADDRESS:

\_\_\_\_\_

\_\_\_\_\_

DELIVERY WILL BE MADE WITHIN \_\_\_\_\_ CALENDER DAYS AFTER ISSUANCE OF PURCHASE ORDER.

PRODUCTION CUT-OFF DATE FOR YEAR MODEL OFFERED: \_\_\_\_\_

INDICATE THE LAST DAY THAT THE CITY CAN PLACE ORDERS UNDER THIS CONTRACT WITHOUT MISSING THE PRODUCTION CUT OFF DATE: \_\_\_\_\_.

BID PRICES SHALL REMAIN FIRM FOR ALL ORDERS PLACED PRIOR TO THIS CUT OFF DATE. IN THE EVENT THAT CITY DOES NOT AWARD A CONTRACT PRIOR TO PRODUCTION CUT OFF DATE, CAN BIDDER PROVIDE BID ITEMS, AT THE BID PRICE SUBMITTED, AFTER THE PRODUCTION CUT OFF DATE? (YES/NO) \_\_\_\_\_

**ITEM**

**QUANTITY**

**DESCRIPTION**

**10**

**1**

**Pre-Mix Mastic Seal Applicator Truck**

PRICE EACH: \$ \_\_\_\_\_

TOTAL: \$ \_\_\_\_\_

YEAR, MAKE & MODEL OF OFFERED:

\_\_\_\_\_

SPECIFIC MAKE & MODEL OF ENGINE OFFERED (INCLUDE SAE NET HP):

\_\_\_\_\_

TRANSMISSION OFFERED:

\_\_\_\_\_

WARRANTY:

\_\_\_\_\_

WARRANTY SERVICE PROVIDER FACILITY NAME:

\_\_\_\_\_

\_\_\_\_\_

WARRANTY SERVICE PROVIDER FACILITY ADDRESS:

\_\_\_\_\_

\_\_\_\_\_

DELIVERY WILL BE MADE WITHIN \_\_\_\_\_ CALENDER DAYS AFTER ISSUANCE OF PURCHASE ORDER.

PRODUCTION CUT-OFF DATE FOR YEAR MODEL OFFERED: \_\_\_\_\_

INDICATE THE LAST DAY THAT THE CITY CAN PLACE ORDERS UNDER THIS CONTRACT WITHOUT MISSING THE PRODUCTION CUT OFF DATE: \_\_\_\_\_.

BID PRICES SHALL REMAIN FIRM FOR ALL ORDERS PLACED PRIOR TO THIS CUT OFF DATE. IN THE EVENT THAT CITY DOES NOT AWARD A CONTRACT PRIOR TO PRODUCTION CUT OFF DATE, CAN BIDDER PROVIDE BID ITEMS, AT THE BID PRICE SUBMITTED, AFTER THE PRODUCTION CUT OFF DATE? (YES/NO) \_\_\_\_\_

**ITEM**

**QUANTITY**

**DESCRIPTION**

**11**

**1**

**Class 5, Regular Cab, 1,000-gallon Fuel Dispensing Truck**

PRICE EACH: \$ \_\_\_\_\_

TOTAL: \$ \_\_\_\_\_

YEAR, MAKE & MODEL OF OFFERED:

\_\_\_\_\_

SPECIFIC MAKE & MODEL OF ENGINE OFFERED (INCLUDE SAE NET HP):

\_\_\_\_\_

TRANSMISSION OFFERED:

\_\_\_\_\_

WARRANTY:

\_\_\_\_\_

WARRANTY SERVICE PROVIDER FACILITY NAME:

\_\_\_\_\_

\_\_\_\_\_

WARRANTY SERVICE PROVIDER FACILITY ADDRESS:

\_\_\_\_\_

\_\_\_\_\_

DELIVERY WILL BE MADE WITHIN \_\_\_\_\_ CALENDER DAYS AFTER ISSUANCE OF PURCHASE ORDER.

PRODUCTION CUT-OFF DATE FOR YEAR MODEL OFFERED: \_\_\_\_\_

INDICATE THE LAST DAY THAT THE CITY CAN PLACE ORDERS UNDER THIS CONTRACT WITHOUT MISSING THE PRODUCTION CUT OFF DATE: \_\_\_\_\_.

BID PRICES SHALL REMAIN FIRM FOR ALL ORDERS PLACED PRIOR TO THIS CUT OFF DATE. IN THE EVENT THAT CITY DOES NOT AWARD A CONTRACT PRIOR TO PRODUCTION CUT OFF DATE, CAN BIDDER PROVIDE BID ITEMS, AT THE BID PRICE SUBMITTED, AFTER THE PRODUCTION CUT OFF DATE? (YES/NO) \_\_\_\_\_

**ITEM**

**QUANTITY**

**DESCRIPTION**

**12**

**1**

**1 Ton, Crew Cab 4x2 Stake Bed Truck, DRW with Lift Gate**

PRICE EACH: \$ \_\_\_\_\_

TOTAL: \$ \_\_\_\_\_

YEAR, MAKE & MODEL OF OFFERED:

\_\_\_\_\_

SPECIFIC MAKE & MODEL OF ENGINE OFFERED (INCLUDE SAE NET HP):

\_\_\_\_\_

TRANSMISSION OFFERED:

\_\_\_\_\_

WARRANTY:

\_\_\_\_\_

WARRANTY SERVICE PROVIDER FACILITY NAME:

\_\_\_\_\_

\_\_\_\_\_

WARRANTY SERVICE PROVIDER FACILITY ADDRESS:

\_\_\_\_\_

\_\_\_\_\_

DELIVERY WILL BE MADE WITHIN \_\_\_\_\_ CALENDER DAYS AFTER ISSUANCE OF PURCHASE ORDER.

PRODUCTION CUT-OFF DATE FOR YEAR MODEL OFFERED: \_\_\_\_\_

INDICATE THE LAST DAY THAT THE CITY CAN PLACE ORDERS UNDER THIS CONTRACT WITHOUT MISSING THE PRODUCTION CUT OFF DATE: \_\_\_\_\_.

BID PRICES SHALL REMAIN FIRM FOR ALL ORDERS PLACED PRIOR TO THIS CUT OFF DATE. IN THE EVENT THAT CITY DOES NOT AWARD A CONTRACT PRIOR TO PRODUCTION CUT OFF DATE, CAN BIDDER PROVIDE BID ITEMS, AT THE BID PRICE SUBMITTED, AFTER THE PRODUCTION CUT OFF DATE? (YES/NO) \_\_\_\_\_

ITEM

QUANTITY

DESCRIPTION

13

2

1 Ton Regular Cab Truck with Mounted Fold Down Bed

Option A Custom Color – FAA Yellow PRICE EACH: \$ \_\_\_\_\_

OPTION A CUSTOM COLOR TOTAL \$ \_\_\_\_\_

Option B OEM Color – White PRICE EACH \$ \_\_\_\_\_

OPTION B OEM COLOR TOTAL \_\_\_\_\_

YEAR, MAKE & MODEL OF OFFERED:

\_\_\_\_\_

SPECIFIC MAKE & MODEL OF ENGINE OFFERED (INCLUDE SAE NET HP):

\_\_\_\_\_

TRANSMISSION OFFERED:

\_\_\_\_\_

WARRANTY:

\_\_\_\_\_

WARRANTY SERVICE PROVIDER FACILITY NAME:

\_\_\_\_\_

\_\_\_\_\_

WARRANTY SERVICE PROVIDER FACILITY ADDRESS:

\_\_\_\_\_

\_\_\_\_\_

DELIVERY WILL BE MADE WITHIN \_\_\_\_\_ CALENDER DAYS AFTER ISSUANCE OF PURCHASE ORDER.

PRODUCTION CUT-OFF DATE FOR YEAR MODEL OFFERED: \_\_\_\_\_

INDICATE THE LAST DAY THAT THE CITY CAN PLACE ORDERS UNDER THIS CONTRACT WITHOUT MISSING THE PRODUCTION CUT OFF DATE: \_\_\_\_\_.

BID PRICES SHALL REMAIN FIRM FOR ALL ORDERS PLACED PRIOR TO THIS CUT OFF DATE. IN THE EVENT THAT CITY DOES NOT AWARD A CONTRACT PRIOR TO PRODUCTION CUT OFF DATE, CAN BIDDER PROVIDE BID ITEMS, AT THE BID PRICE SUBMITTED, AFTER THE PRODUCTION CUT OFF DATE? (YES/NO) \_\_\_\_\_

ITEM	QUANTITY	DESCRIPTION
14	1	1 Ton Crew Cab, DRW, 2-3 Cubic Yard, 9' Dump Body

Option A Custom Color – FAA Yellow PRICE EACH: \$ \_\_\_\_\_

OPTION A CUSTOM COLOR TOTAL \$ \_\_\_\_\_

Option B OEM Color – White PRICE EACH \$ \_\_\_\_\_

OPTION B OEM COLOR TOTAL \_\_\_\_\_

YEAR, MAKE & MODEL OF OFFERED:

\_\_\_\_\_

SPECIFIC MAKE & MODEL OF ENGINE OFFERED (INCLUDE SAE NET HP):

\_\_\_\_\_

TRANSMISSION OFFERED:

\_\_\_\_\_

WARRANTY:

\_\_\_\_\_

WARRANTY SERVICE PROVIDER FACILITY NAME:

\_\_\_\_\_

\_\_\_\_\_

WARRANTY SERVICE PROVIDER FACILITY ADDRESS:

\_\_\_\_\_

\_\_\_\_\_

DELIVERY WILL BE MADE WITHIN \_\_\_\_\_ CALENDER DAYS AFTER ISSUANCE OF PURCHASE ORDER.

PRODUCTION CUT-OFF DATE FOR YEAR MODEL OFFERED: \_\_\_\_\_

INDICATE THE LAST DAY THAT THE CITY CAN PLACE ORDERS UNDER THIS CONTRACT WITHOUT MISSING THE PRODUCTION CUT OFF DATE: \_\_\_\_\_.

BID PRICES SHALL REMAIN FIRM FOR ALL ORDERS PLACED PRIOR TO THIS CUT OFF DATE. IN THE EVENT THAT CITY DOES NOT AWARD A CONTRACT PRIOR TO PRODUCTION CUT OFF DATE, CAN BIDDER PROVIDE BID ITEMS, AT THE BID PRICE SUBMITTED, AFTER THE PRODUCTION CUT OFF DATE? (YES/NO) \_\_\_\_\_

**ITEM**

**QUANTITY**

**DESCRIPTION**

**15**

**1**

**Class 5, Crew Cab and Chassis 4x4 Stake/Flat Bed Truck with Hydraulics**

Option A Custom Color – FAA Yellow PRICE EACH: \$ \_\_\_\_\_

OPTION A CUSTOM COLOR TOTAL \$ \_\_\_\_\_

Option B OEM Color – White PRICE EACH \$ \_\_\_\_\_

OPTION B OEM COLOR TOTAL \_\_\_\_\_

YEAR, MAKE & MODEL OF OFFERED:

\_\_\_\_\_

SPECIFIC MAKE & MODEL OF ENGINE OFFERED (INCLUDE SAE NET HP):

\_\_\_\_\_

TRANSMISSION OFFERED:

\_\_\_\_\_

WARRANTY:

\_\_\_\_\_

WARRANTY SERVICE PROVIDER FACILITY NAME:

\_\_\_\_\_

\_\_\_\_\_

WARRANTY SERVICE PROVIDER FACILITY ADDRESS:

\_\_\_\_\_

\_\_\_\_\_

DELIVERY WILL BE MADE WITHIN \_\_\_\_\_ CALENDER DAYS AFTER ISSUANCE OF PURCHASE ORDER.

PRODUCTION CUT-OFF DATE FOR YEAR MODEL OFFERED: \_\_\_\_\_

INDICATE THE LAST DAY THAT THE CITY CAN PLACE ORDERS UNDER THIS CONTRACT WITHOUT MISSING THE PRODUCTION CUT OFF DATE: \_\_\_\_\_.

BID PRICES SHALL REMAIN FIRM FOR ALL ORDERS PLACED PRIOR TO THIS CUT OFF DATE. IN THE EVENT THAT CITY DOES NOT AWARD A CONTRACT PRIOR TO PRODUCTION CUT OFF DATE, CAN BIDDER PROVIDE BID ITEMS, AT THE BID PRICE SUBMITTED, AFTER THE PRODUCTION CUT OFF DATE? (YES/NO) \_\_\_\_\_

**PROMPT PAYMENT DISCOUNT: \_\_\_\_\_% \_\_\_\_\_ DAYS. (IF NO DISCOUNT IS OFFERED, NET 30 WILL APPLY.)**



## **ADDENDUM I**

**SUBJECT:** Medium and Heavy-Duty Trucks, (IFB 6100018098), Scheduled to Close: June 14, 2024;  
Date of Issue: May 29, 2024

**FROM:** Marilyn Timlake  
Procurement Manager

**DATE:** June 13, 2024

**THIS NOTICE SHALL SERVE AS ADDENDUM NO. I - TO THE ABOVE REFERENCED  
INVITATION FOR BID**

**THE ABOVE MENTIONED INVITATION FOR BID IS HEREBY AMENDED AS FOLLOWS:**

- 1. Modify: The IFB opening date has been extended to June 21, 2024; 2:00 AM CT.**

*Marilyn Timlake*

---

Marilyn Timlake  
Procurement Manager  
Finance Department - Procurement Division



## **ADDENDUM II**

**SUBJECT:** Medium and Heavy-Duty Trucks, (IFB 6100018098), Scheduled to Close: June 21, 2024;  
Date of Issue: May 29, 2024

**FROM:** Jennifer Johnson  
Procurement Administrator

**DATE:** June 17, 2024

**THIS NOTICE SHALL SERVE AS ADDENDUM NO. II - TO THE ABOVE REFERENCED  
INVITATION FOR BID**

**THE ABOVE MENTIONED INVITATION FOR BID IS HEREBY AMENDED AS FOLLOWS:**

- 1. Add: Pre-Submittal Conference Sign In Sheet, this document will be posted as a separate file.**
- 2. Modify: IFB Document Section 004 – Specifications / Scope of Services:**

**Section 4.1 is changed to read:**

**Section 4.1 SCOPE:** The City of San Antonio is soliciting bids to obtain the following medium and heavy-duty trucks needed through October 30, 2024:

Description	PO Issued Immediately Upon Award	Estimated PO issued October 30, 2024	Total Estimated Contract Award
Item 1 – 1 Ton Full Four Door, DRW, 4x4 Pickup Truck w/ Gooseneck Hitch	1	0	1
Item 2 – 1 Ton, Regular Cab, 84" Cab to Axle, DRW 4x2 Flat/Stake Bed Truck with Lift Gate	4	0	4
Item 3 – Class 5, Crew Cab, 12ft Stake/Flat Bed Truck Option A Custom Color – FAA Yellow Option B OEM Color - White	1	0	1
Item 4 – Class 6 Cabover min. 14' Box Truck with Lift Gate	1	0	1
Item 5 – 25K GVWR Landscaping Dump Truck	1	2	3
Item 6 – 35K lbs. GVWR Water Distribution Truck	1	1	2
Item 7 – 52K lbs. GVWR, 12 Cubic Yard Dump Truck	3	0	3
Item 8 – 60K lbs. GVWR 5th Wheel Tractor Truck	2	3	5
Item 9 – Cab and Chassis with Roll Off Hoist and Tarp System - Min. 66K GVWR	1	8	9
Item 10 – Pre-Mix Mastic Seal Applicator Truck	1	0	1

Item 11 - Class 5, Regular Cab, 1,000-gallon Fuel Dispensing Truck	1	0	1
Item 12 - 1 Ton, Crew Cab 4x2 Stake Bed Truck, DRW with Lift Gate	0	1	1
Item 13 - 1 Ton Regular Cab Truck with Mounted Fold Down Bed Option A Custom Color - FAA Yellow Option B OEM Color - White	2	0	2
Item 14 - 1 Ton Crew Cab, DRW, 2-3 Cubic Yard, 9' Dump Body Option A Custom Color - FAA Yellow Option B OEM Color - White	1	0	1
Item 15 - Class 5, Crew Cab and Chassis 4x4 Stake/Flat Bed Truck with Hydraulics Option A Custom Color - FAA Yellow Option B OEM Color - White	1	0	1

**Section 4.3.3 is changed to read:**

**4.3.3 TRANSMISSION/DRIVE:** Automatic transmission with overdrive; 5 speed minimum. Vehicle shall include a 4X4 Drive train, limited slip axles, with a two-speed transfer case with electronic shift control.

**Section 4.3.10 is changed to read:**

**4.3.10 SEATING:** Vinyl seating and cloth upholstery shall be accepted.

**Section 4.3.14 is changed to read:**

**4.3.14 SAFETY** - Vehicle shall be equipped with a back-up camera and reverse sensor that gives an audible “beep” inside cab that becomes more audible the closer the vehicle approaches an object. Unit shall be equipped with forward collision warning and blind spot monitoring, where available.

**Section 4.4 is changed to read:**

**4.4**

ITEM	QUANTITY	DESCRIPTION
2	4	1 Ton, Regular Cab, 84” Cab to Axle, DRW 4x2 Flat/Stake Bed Truck with Lift Gate

**Section 4.4.12 is changed to read:**

**4.4.12 SAFETY** - Vehicle shall be equipped with a back-up camera and reverse sensor that gives an audible “beep” inside cab that becomes more audible the closer the vehicle approaches an object. Unit shall be equipped with forward collision warning and blind spot monitoring, where available.

**Section 4.4.13 is changed to read:**

**4.4.13 MISCELLANEOUS** – These units are to replace for Public Works #058616, 2 grant funded fleet additions for the Fire Department, and a fleet addition that is grant funded for the Police Department immediately upon award.

**Section 4.5.1 is changed to read:**

**4.5.1 TRUCK** - Four full door cab, tilt hood preferred, and fenders. Truck must be equipped with running boards at every door. Cab to axle minimum 84". Upholstery shall be dark gray cloth or vinyl. Cab shall be equipped with dark vinyl flooring. Trucks shall be supplied with sufficient factory upfitter switches to accommodate lighting listed below.

**Section 4.5.14 is changed to read:**

**4.5.14 SAFETY** – Vehicle shall be equipped with a backup camera with a color display mounted to dash or OEM equipment. Vehicle shall be equipped with rear back up sensors with audible alarm which can be heard inside the cab and passersby. Vehicle shall be equipped with forward collision warning and blind spot monitoring, where available.

**Section 4.5.17.1 is changed to read:**

**4.5.17.1** Option A – Custom Color Dupont B8779 (FAA safety regulation vehicle color) or equivalent. Ford School Bus Yellow is acceptable.

**Section 4.6 is changed to read:**

**4.6**

ITEM	QUANTITY	DESCRIPTION
4	1	Class 6 Cabover min. 14' Box Truck with Lift Gate

**Section 4.6.8 is changed to read:**

**4.6.8 DIMENSIONS:** Cab Over design. Minimum wheelbase shall be approximately 137".

**Section 4.6.12 is changed to read:**

**4.6.12 BOX TRUCK DIMENSIONS** (Will accept a 14ft to 16ft box truck)

**Section 4.6.12.1 is changed to read:**

**4.6.12.1 BOX LENGTH:** (outside) minimum 14' feet 5" inches

**Section 4.6.12.2 is changed to read:**

**4.6.12.2 BOX LENGTH:** (inside) minimum 13' feet 11" inches

**Section 4.6.12.4 is changed to read:**

**4.6.12.4 REAR DOOR WIDTH:** minimum 88" inches

**Section 4.6.12.5 is changed to read:**

**4.6.12.5 REAR DOOR HEIGHT:** minimum 79.25" inches

**Section 4.6.12.14 is changed to read:**

**4.6.12.14 SAFTEY:** Vehicle shall be equipped with a backup camera with a color display mounted to dash. Vehicle shall be equipped with rear back up sensors with audible alarm which can be heard inside the cab and passersby. Vehicle shall be equipped with forward collision warning and blind spot monitoring, where available. Amber color LED strobe lights model Grote 77353, or equal, must be installed in all four corners (front grill and rear of box body) of truck. Strokes must be wired to a factory type or toggle switch inside of the cab.

**Section 4.7.3 is changed to read:**

**4.7.3 TRANSMISSION/DRIVE** – The chassis shall be equipped with Allison 2500 RDS six (6) speed automatic or proven equal. Eaton/Cummins equivalent or TorqueShift Heavy Duty 10-Speed Automatic shall also be accepted.

**Section 4.7.4 is changed to read:**

**4.7.4 CAB** - Cab with tilt hood, left and right-hand cab grab handles, and manufacturer's standard AM/FM radio. Convex mirrors installed on both front fenders to provide view of obstacles on right side of truck from front bumper to rear wheels. Driver seat must be air ride, high back bucket type. Cab shall be painted OEM white.

**Section 4.7.32 is changed to read:**

**4.7.32 SAFETY-** Vehicle will require amber color LED strobe lights model that are 4"x2". Strobe lights must be installed in all four corners (two mounted on front grill and two at rear of dump body). Front strobes must be wired to the battery cut off switch and rear strobes must be wired to the brake lights. Vehicle shall be equipped with an audible back up alarm that can be heard inside the cab and passersby.

**Section 4.8 is changed to read:**

**4.8**

ITEM	QUANTITY	DESCRIPTION
6	2	35K lbs. GVWR Water Distribution Truck

**Section 4.8.2 is changed to read:**

**4.8.2 TRANSMISSION** - Allison 3000, or proven equal, with external oil cooler and PTO provision. (Hot shift PTO preferred.) Eaton Cummins and TorqShift equivalent shall also be accepted.

**Section 4.8.17.21 is changed to read:**

**4.8.17.21 BACK UP CAMERA SYSTEM** – Trucks shall be supplied with a camera system that is equal or equivalent to the specifications below:

**Section 4.8.17.21.1 is changed to read:**

**4.8.17.21.1** DVR Monitor with a minimum of 2GB memory storage (SD card included with delivery if system is an SD card-based system of any brand), color video system, with automatic switcher must be installed to enable proper and safe operation of the truck. All cameras must be WIDE Angle. One camera must be mounted low below the tailgate on the frame of the body to assist in backing up, one camera must be installed to providing a view of the dump operation and two (2) cameras (provided by chassis manufacture and installed in right and left side rear view mirrors), and one forward facing cameras.

**Section 4.8.17.21.2 is changed to read:**

**4.8.17.21.2** Cameras and connectors must be sealed and waterproof. Flat screen, minimum 7-inch monitor must have extended visor and swivel base and be reachable and viewable from either driver position. Automatic switcher with remote switch must be capable of switching between cameras based on operation controls, transmission setting, or operator's preference. Monitor must have split screen capabilities and provisions to add another camera without modification. Cameras must have built in infra-red night vision, minimum 130° field of view, and sunshade device.

**Section 4.8.17.21.3 is changed to read:**

**4.8.17.21.3** The rear-view camera must be activated when the transmission is shifted to reverse, view from the rear camera must be on the monitor when the truck is in transit (i.e., the truck is in motion and the hydraulic system is not engaged). A back up detection system must be installed - Rear object detection system, beeps faster the closer you get to an object while reversing; it will be tied into the camera system specified. Back up detection system. Vehicle shall be equipped with an audible alarm that can be heard by passersby.

**Section 4.8.20 is changed to read:**

**4.8.20 MISCELLANEOUS** - These units are to replace Public Works #1507 water truck immediately upon award and estimated to replace Parks & Recreation #2002 by October 30, 2024.

**Section 4.9.3 is changed to read:**

**4.9.3 TRANSMISSION/DRIVE** – Allison 3000, or proven equal, with external oil cooler and PTO provision. (Hot shift PTO preferred.) Eaton Cummins or TorqShift equivalent shall also be accepted.

**Section 4.11.6 is changed to read:**

**4.11.6 TRANSMISSION:** Allison 4500-RDS, six-speed transmission or proven equal such as Eaton Cummins equivalent with push button controls and Load-Based Shift Scheduling. Cooling system must be water to oil type. Transmission temperature gauge must be provided. Must be equipped with a forced auto neutral when the park brakes are applied. Operator must have to manually shift back to drive when the brakes are released. Equipped with a positive interlock, which cannot be overridden, preventing operation of hydraulic system unless transmission is in neutral, (NO EXCEPTIONS). Push-button style keypad shift controller with illuminated digital display, indicator lights, low fluid level indicator, diagnostics (prognostics), and gear / mode selection display. Transmission covered by manufacturer's total warranty of 60-months, unlimited miles, 100% parts, and labor.

**Section 4.12.2 is changed to read:**

**4.12.2 TRANSMISSION/ DRIVE** - Automatic transmission, Allison 4500RDS or equivalent such as Eaton Cummins.

**Section 4.13.3 is changed to read:**

**4.13.3 TRANSMISSION/DRIVE:** Requires a minimum 6 speed heavy duty automatic transmission: 4x4 drive with limited slip axle and PTO provision.

**Section 4.13.9 is changed to read:**

**4.13.9 FUEL TANK:** Truck must have a minimum of 40 gallon of diesel for chassis consumption.

**Section 4.13.15 is changed to read:**

**4.13.15 SAFETY:** Vehicle must be supplied with a backup camera integrated into rear view mirror and audible alarm activated when vehicle is placed in reverse that can be heard inside the cab and passersby. Red and white DOT reflective tape shall run along the curbside, street side, and rear of body. Vehicle shall be equipped with required hazmat labeling affixed to body. A cab shield shall be placed between the fuel tank and the cab.

**Section 4.14.16 is changed to read:**

**4.14.16 BACK UP CAMERA:** Unit shall be equipped with a backup camera with a color display mounted to the dash. Truck shall be equipped with rear backup sensors with audible alarm (or “beep”) which can be heard inside the cab that becomes more audible the closer the vehicle approaches an object. Truck shall be equipped with forward collision warning and blind spot monitoring, where available.

**Section 4.15.5 is changed to read:**

**4.15.5 DIMENSIONS:** Regular cab configuration. Bed length must be a minimum of 97” wide and minimum 96” long. Wheelbase manufacturer’s recommendation for a regular cab chassis and 9ft bed length.

**Section 4.15.13.9 is added as follows:**

**4.15.13.9** Sides shall fold down with hinges and shall not be removeable. See photo for reference:

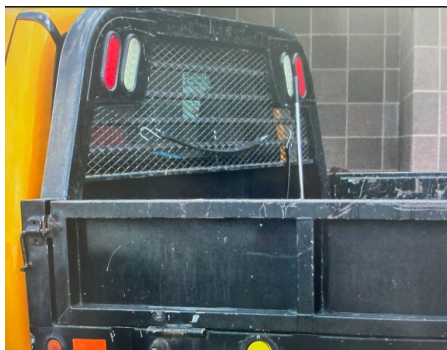


Photo if for illustrative purposes only.

**Section 4.15.15 is changed to read:**

**4.15.15 SAFETY** - Vehicle shall be equipped with a back-up camera and reverse sensor that gives an audible “beep” inside cab that becomes more audible the closer the vehicle approaches an object. Unit shall be equipped with forward collision warning and blind spot monitoring, where available.

**Section 4.16.17 is changed to read:**

**4.16.17 SAFETY** - Vehicle shall be equipped with a back-up camera and reverse sensors that gives an audible “beep” that becomes more audible the closer the vehicle approaches an object. Unit shall be equipped with forward collision warning and blind spot monitoring, where available.

**Section 4.17.1 is changed to read:**

**4.17.1 TRUCK** - This vehicle will be used to periodically tow a 2009 Shabben Pro 1010 Chemical Sprayer to treat the airport’s green spaces. A four full door cab, tilt hood preferred, and fenders is requested. Truck must be equipped with running boards at every door. Cab to axle minimum 84”. Upholstery shall be dark gray cloth or vinyl. Cab shall be equipped with dark vinyl flooring. Trucks shall be supplied with sufficient factory upfitter switches to accommodate lighting listed below.

**Section 4.17.14 is changed to read:**

**4.17.14 SAFETY** – Vehicle shall be equipped with a backup camera with a color display mounted to dash or OEM equipment. Vehicle shall be equipped with rear back up sensors with audible alarm (or “beep”) which can be heard by passersby and inside the cab. Vehicle shall be equipped with forward collision warning and blind spot monitoring, where available.

**Section 4.17.16 is changed to read:**

**4.17.16 MISCELLANEOUS:** This truck will replace #1862 that is used by the Aviation Airfield Maintenance Division for routine tasks and will on occasion tow a 2009 Schaben Pro 1010 Chemical Sprayer. A purchase order shall be issued immediately upon award.



*Left photo is the 2009 Schaben Pro 1010. Right photo is clovis hitch for the supplied lunette eye. Pictures are for illustrative purposes only.*

**Section 4.17.17 is changed to read:**

**4.17.17 WET KIT** - Prior to delivery of unit to the City, vendor will reach out to Aviation and identify the necessary connections for the 2009 Schaben Pro 1010 Chemical Sprayer which shall have a 60ft hydraulic and fold boom. A hot shift PTO mounted, and a direct mount pump shall be installed on the truck transmission which operates 50-90% of engine RPM. A metal hydraulic reservoir must be mounted under flatbed body and be a sufficient size to support sprayer operation. Hydraulic controls must be mounted inside truck cab readily accessible to the driver. Wet kit must be filled to capacity with SAE 10 Hydraulic oil.

**3. Section 009 – Attachments, Price Schedule is replaced and amended as ATTACHMENT A – PRICE SCHEDULE – REVISION 1, DATED JUNE 17, 2024**

**QUESTIONS SUBMITTED IN ACCORDANCE WITH SECTION 003, PRE-SUBMITTAL CONFERENCE:**

On June 4, 2024, the City of San Antonio hosted a Pre-Submittal Conference to provide information and clarification for the Medium and Heavy-Duty Trucks. Below is a list of questions that were asked at the pre-submittal conference. The City's official response to questions asked is as follows:

Question 1: For bid item 1 is it ok with a standard rear axle?

Response: Please see the revision to 4.3.3. For added clarification this does apply to 4.13.3 but will not apply to 4.17.4.

Question 2: Under 4.3.10 Seating would a cloth option for the seating be acceptable?

Response: Yes, please see the revision to 4.3.10.

Question 3: Under Section 4.3.14 Safety can we get a better clarification on where you want the noise to be projected from? (Inside the cab, outside the cab, or both)

Response: Please see the revisions to 4.3.14.

Question 4: Under Section 4.5.1 Truck, does it have to be tilt hood?

Response: Aviation prefers a tilt hood for ease of maintenance but will accept a conventional hood design for this vehicle replacement.

Question 5: Under Section 4.5.1 Truck, can the Cab to Axle be a minimum of 84"?

Response: Yes, please see revision to 4.5.1.

Question 6: Under Section 4.5.17 Color, will the city accept School Bus Yellow like in previous bids?

Response: Yes, will accept Ford School Bus Yellow as an equivalent to Dupont B8779 see revision to 4.5.17.1.

Question 7: Under Section 4.7.4 Cab, Air suspension is not offered for the vehicle you are requesting. Will you accept another option? The Air suspension is offered in some class 6 & 7 vehicles.

Response: Please see revision to 4.7.4.

Question 8: Under Section 4.11.6 Transmission, Allison is having problems with completing the 4500, would you consider other options?

Response: Please revision to 4.11.6

Question 9: Under Section 4.13.9 Fuel Tank, can you make it a minimum of 40 Gallons?

Response: Please see revision to 4.13.9.

Question 10: Under Section 4.17.1 Truck, does it have to be tilt hood?

Response: Aviation prefers a tilt hood for ease of maintenance but will accept a conventional hood design for this vehicle replacement.

Question 11: Under Section 4.17.1 Truck, can the Cab to Axle be a minimum of 84”?

Response: Please see revision to 4.17.1.

Question 12: Please clarify the bed length for Item 13.

Response: Specification is for a 9ft bed, see revision to 4.15.5.

Question 13: For Item 15, can the controller from the old truck be moved to the new truck? Can not find contact for a replacement controller for the 2009 Schaben Pro Chemical Sprayer.

Response: Yes, the old controller can be recycled to the new truck. A replacement controller can be obtained from Ag Spray Equipment, the new owner of Schaben. Interested respondents can see the hydraulic connections and control set-up by appointment only by calling Jody De La Rosa.

*Marilyn Timlake* for

---

Jennifer Johnson  
Procurement Administrator  
Finance Department - Procurement Division



### **ADDENDUM III**

**SUBJECT:** Medium and Heavy-Duty Trucks, (IFB 6100018098), Scheduled to Close: June 21, 2024;  
Date of Issue: May 29, 2024

**FROM:** Marilyn Timlake  
Procurement Manager

**DATE:** June 21, 2024

**THIS NOTICE SHALL SERVE AS ADDENDUM NO. III - TO THE ABOVE REFERENCED  
INVITATION FOR BID**

**THE ABOVE MENTIONED INVITATION FOR BID IS HEREBY AMENDED AS FOLLOWS:**

- 1. Modify: The IFB opening date has been extended to June 26, 2024; 2:00 PM CT.**

*Marilyn Timlake*

---

Marilyn Timlake  
Procurement Manager  
Finance Department - Procurement Division



## **ADDENDUM IV**

**SUBJECT:** Medium and Heavy-Duty Trucks, (IFB 6100018098), Scheduled to Close: June 26, 2024;  
Date of Issue: May 29, 2024

**FROM:** Jennifer Johnson  
Procurement Administrator

**DATE:** June 21, 2024

**THIS NOTICE SHALL SERVE AS ADDENDUM NO. IV - TO THE ABOVE REFERENCED  
INVITATION FOR BID**

**THE ABOVE MENTIONED INVITATION FOR BID IS HEREBY AMENDED AS FOLLOWS:**

**1. Modify: IFB Document Section 004 – Specifications / Scope of Services:**

**Section 4.8.19 is changed to read:**

**4.8.19 SAFETY** - Equipped with OEM airbags as available by manufacturer, seatbelts, amber colored strobe lights must be installed in all four corners of truck. All strobes must be wired to a factory type switch located in cab. Reflective conspicuity tape must be installed along tank sides and rear platform. An LED, amber colored, directional light bar that is the width of the water body rear, shall be mounted high, not impeding hose reels, under the access ladder is acceptable.

**Section 4.13.15 is changed to read:**

**4.13.15 SAFETY:** Vehicle must be supplied with a backup camera integrated into rear view mirror or dash and audible alarm activated when vehicle is placed in reverse that can be heard inside the cab and passersby. Red and white DOT reflective tape shall run along the curbside, street side, and rear of body. Vehicle shall be equipped with required hazmat labeling affixed to body. A cab shield shall be placed between the fuel tank and the cab.

**Section 4.15.7 is changed to read:**

**4.15.7 TIRES & WHEELS:** Unit must be equipped with single rear tires and wheels. Tires to meet or exceed minimum gross vehicle weight rating of vehicle, maximum traction tread design or manufacturer's tire design for unpaved roads with full size matching spare tire and wheel.

**Section 4.16.19 is changed to read:**

**4.16.19 COLOR** - Truck dump body shall be black or painted to match cab. Cab shall be painted in one of the following options which must be indicated by bidder on the price schedule:

**Section 4.17.6 is changed to read:**

**4.17.6 AXLE & SUSPENSION** – Truck shall be equipped with front axle that is minimum 5,000 lb. capacity and rear axle that is a minimum 14,500 lb. capacity: with applicable suspension and heavy-duty shock absorbers.

**QUESTIONS SUBMITTED IN ACCORDANCE WITH SECTION 003, RESTRICTIONS OF COMMUNICATION:**

Question 1: For bid item 1 Picture shows front bumper replacement or heavy-duty grill guard. Picture shows bed rails, headache rack, received hitch tow ball assembly. Do you need these items or were they left off in error?

Response: Picture is for illustrative purposes only; the bed rails, headache rack, and tow ball are not required to be supplied with truck bid.

Question 2: For bid item 6 Section 4.8.19 Safety, Driver side air bags are possible on a few OEM's products, but passenger side air bags are generally NOT available on trucks over class (5). Will this be acceptable?

Response: Please see revision to Bid item 6 Section 4.8.19 Safety.

Question 3: For bid item 11 GVRW Not to exceed 19,500 GVWR - Ft Axle Min 6000 - rear Axle Min 19,000 - The rear axle min should be 14,706 lbs. also the specification does not say if you want a 60 CA or 84CA - Safety, back up camera in rear mirror OR ON DASH.

Response: Cab to axle length will be determined by the manufacturer's requirements of the 1,000-gallon fuel body offered by respondent. Please see revision to Bid Item 11 Section 4.13.15 Safety for the camera information.

Question 4: For bid item 13 Tires and Wheels - max traction tires and spare - Ford does not offer traction tires on this model. Is that acceptable?

Response: Please see revision to Bid Item 13 Section 4.15.7 Tires & Wheels.

Question 5: For bid item 14 GVWR 13,000 - ft axle min 6,000 lb. should be 5,300 LB - rear axle min 7,000 lb. ok - Do you want the dump color to match the body color?

Response: Please see revision to Bid Item 14 Section 4.16.19 Color.

Question 6: For bid item 15 GVRW 16,001 to 19,500 lbs. - ft ale 5,000 lb. min ok - rear axle min 15,000 lbs. should be min 14,706 lbs. Will this need to be updated?

Response: Please see revision to Bid Item 15 Section 4.17.6 Axle & Suspension.

  
\_\_\_\_\_  
Jennifer Johnson

Procurement Administrator

Finance Department - Procurement Division