

Data Source: City of San Antonio Enterprise GIS, Bexar Metro 911, Bexar Appraisal District
This Geographic Information System Product, received from the City of San Antonio is provided "as is" without warranty of any kind, and the City of San Antonio expressly disclaims all express and implied warranties, including but not limited to the implied warranties of merchantability and fitness for a particular purpose. The City of San Antonio does not warrant, guarantee, or make any representations regarding the use, or the results of the use, of the information provided to you by the City of San Antonio in terms of correctness, accuracy, reliability, timeliness or otherwise. The entire risk as to the results and performance of any information obtained from the City of San Antonio is entirely assumed by the recipient.
*Please contact the responsible City of San Antonio Department for specific determinations.
Map Created by: g07173
Map File Location: C:\ArcView\Transportation Department\ART_01022024\Airport to Rector map
Map Last Edited: 10/10/2024
PDF Filename: Airport to Rector.pdf

Current Zoning
Residential Single-Family District
Multi-Family District
Residential Mixed District

Manufactured Housing District
Mixed Use District
Commercial District
Neighborhood Commercial District

Downtown District
General Industrial District
Heavy Industrial District
Infill Development Zone
Unzoned Right of Way

Form Base Zoning District
Office District
Resource Protection District

ART NS Stations
CRAG Boundary
TOD Applicability Line

ART Corridor
City of San Antonio
City Council Boundary
Cities and Towns
Bexar County

Military Bases
Creeks
Lakes

Overlay Districts such as Airport Overlay, Neighborhood Conservation, Historic Overlay, Historic Landmarks, River Improvement Overlay, and Mission Protection Overlay, and any others are not shown on the map

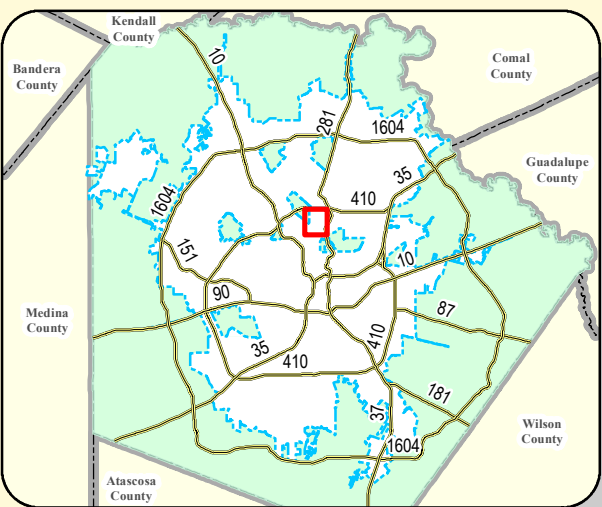
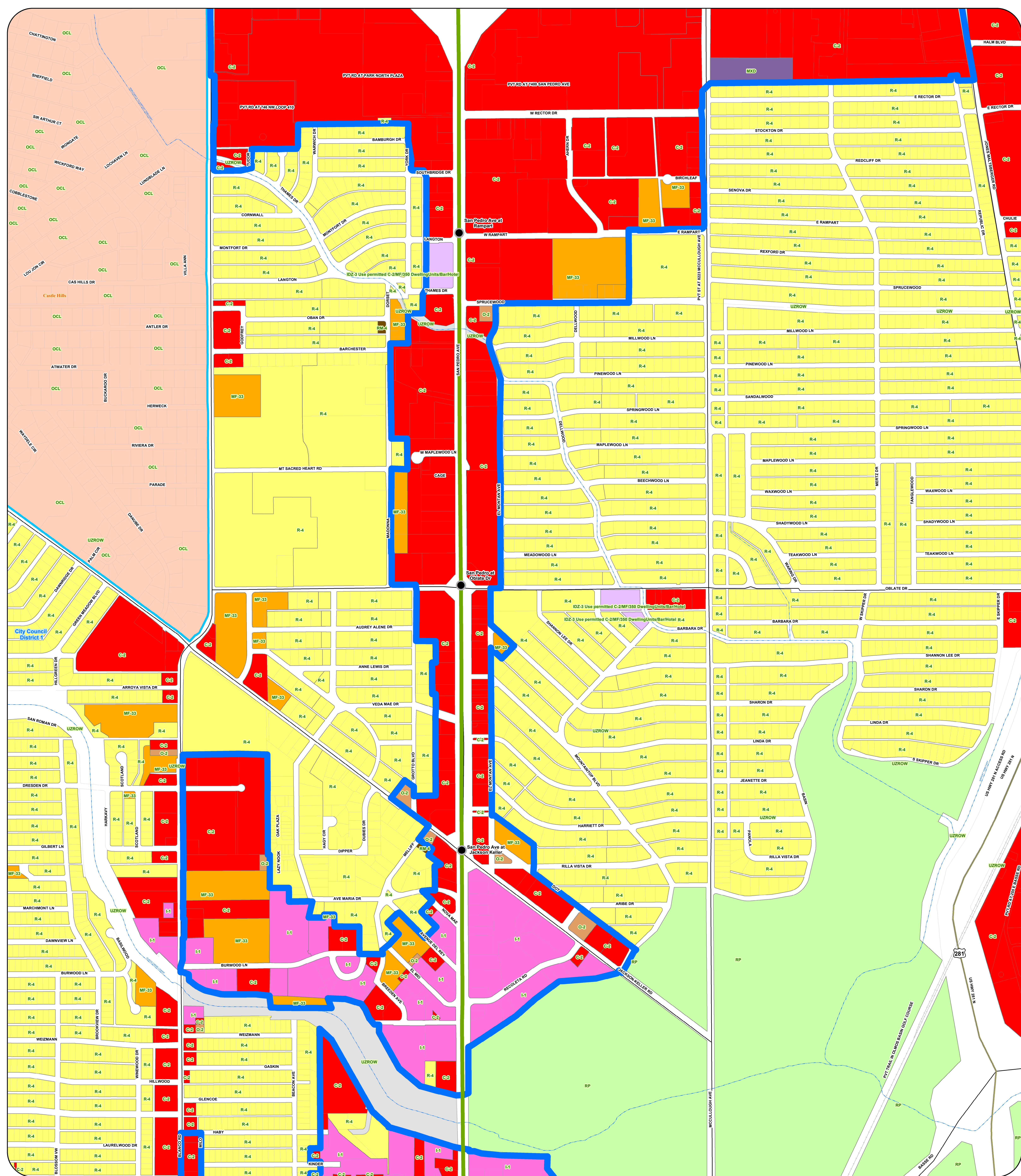
DRAFT

City of San Antonio 2024 Airport to Rector TOD

0 0.125 0.25 Miles

City of San Antonio
Information Technology Services Department
GIS Public Services Division
City Tower
100 W. Houston St., 18th floor
San Antonio, TX 78205





Data Source: City of San Antonio Enterprise GIS, Bexar Metro 911, Bexar Appraisal District.
This Geographic Information System Product, received from The City of San Antonio, is provided "as is" without warranty of any kind, and the City of San Antonio expressly disclaims all express and implied warranties, including but not limited to the implied warranties of merchantability and fitness for a particular purpose. The City of San Antonio does not warrant, guarantee, or make any representations regarding the use, or the results of the use, of the information provided to you by the City of San Antonio in terms of correctness, accuracy, reliability, timeliness or otherwise. The entire risk as to the results and performance of any information obtained from the City of San Antonio is entirely assumed by the recipient.
*Please contact the responsible City of San Antonio Department for specific determinations.
Map Created by: g011173
Map File Location: C:\Users\Transportation\Documents\ART_01022024\Rector to Olmos Creek.mxd
Map Last Edited: 10/10/2024
PDF Filename: Rector to Olmos Creek.pdf

Current Zoning
Residential Single-Family District
Multi-Family District
Residential Mixed District

Manufactured Housing District
Mixed Use District
Commercial District
Neighborhood Commercial District

Downtown District
General Industrial District
Heavy Industrial District
Infill Development Zone

Form Base Zoning District
Office District
Resource Protection District
Unzoned Right of Way
Downtown Business District

ART NS Stations
CRAG Boundary
TOD Applicability Line
ART Corridor

City of San Antonio
City Council Boundary
Cities and Towns
Bexar County
Military Bases
Creeks
Lakes

Overlay Districts such as Airport Overlay, Neighborhood Conservation, Historic Overlay, Historic Landmarks, River Improvement Overlay, and Mission Protection Overlay, and any others are not shown on the map

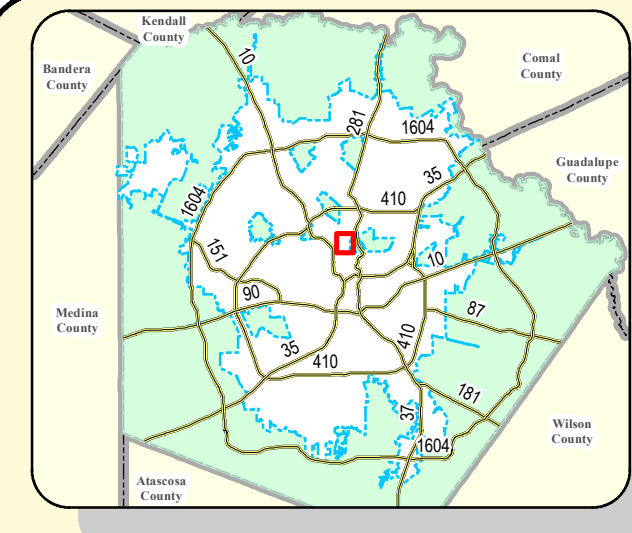
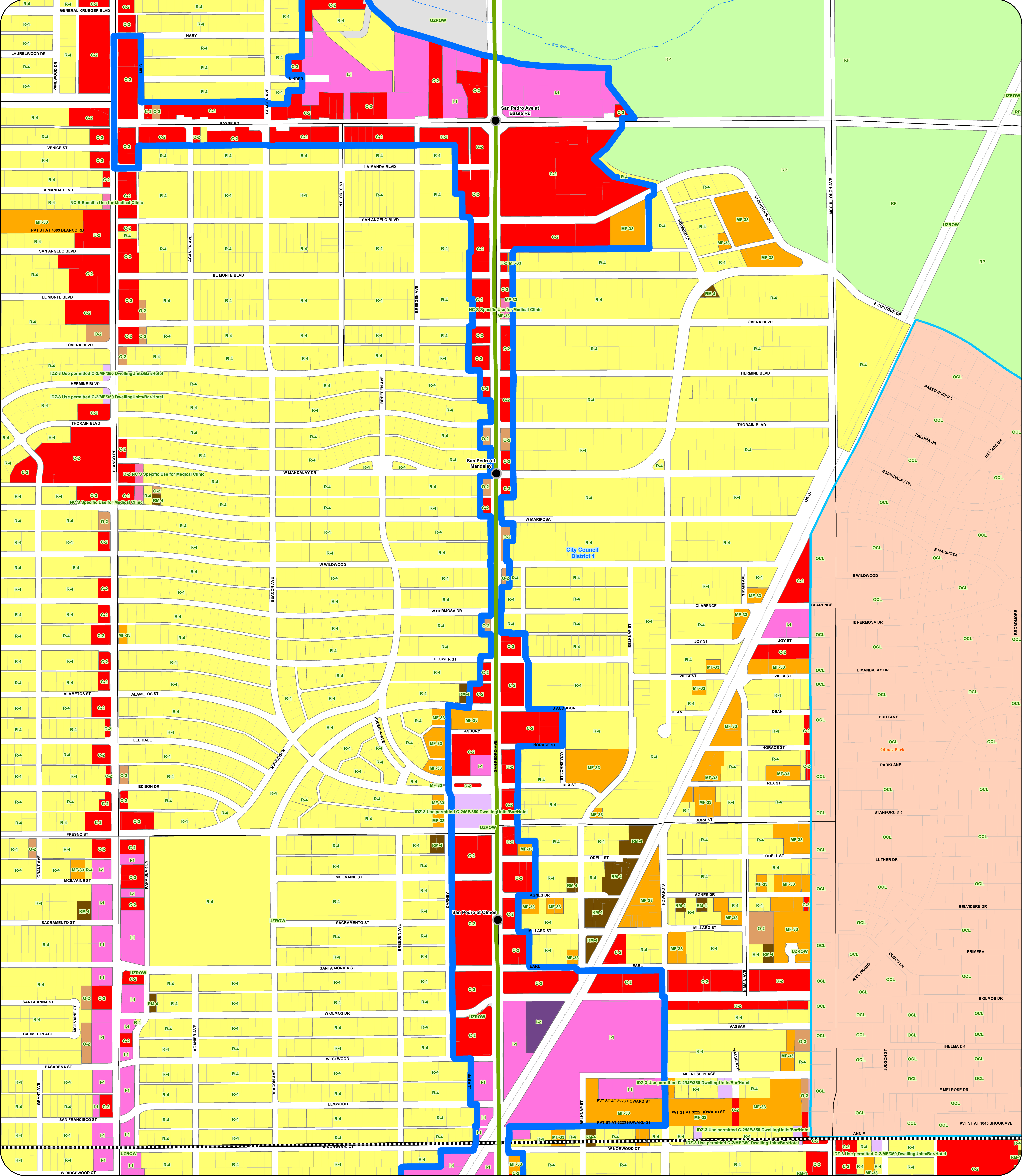
DRAFT

City of San Antonio 2024 Rector to Olmos Creek TOD

0 0.125 0.25 Miles

City of San Antonio
Information Technology Services Department
GIS Public Services Division
100 W. Houston St., 18th floor
San Antonio, TX 78205





DRAFT

Data Source: City of San Antonio Enterprise GIS, Bexar Metro 911, Bexar Appraisal District.
This Geographic Information System Product, received from the City of San Antonio is provided "as is" without warranty of any kind, and the City of San Antonio expressly disclaims all express and implied warranties, including but not limited to the implied warranties of merchantability and fitness for a particular purpose. The City of San Antonio does not warrant, guarantee, or make any representations regarding the use, or the results of the use, of the information provided to you by the City of San Antonio in terms of correctness, accuracy, reliability, timeliness or otherwise. The entire risk as to the results and performance of any information obtained from the City of San Antonio is entirely assumed by the recipient.
*Please contact the responsible City of San Antonio Department for specific determinations.
Map Created by: g07173
Map File Location: C:\Users\g07173\Desktop\GIS\2024\CRAG\CRAG_Creek_to_Northern_Edge_of_CRAG_Boundary.mxd
Map Last Edited: 10/10/2024
PDF Filename: Olmos Creek to Northern Edge of CRAG Boundary.pdf

Overlay Districts such as Airport Overlay, Neighborhood Conservation, Historic Overlay, Historic Landmarks, River Improvement Overlay, and Mission Protection Overlay, and any others are not shown on the map

Current Zoning

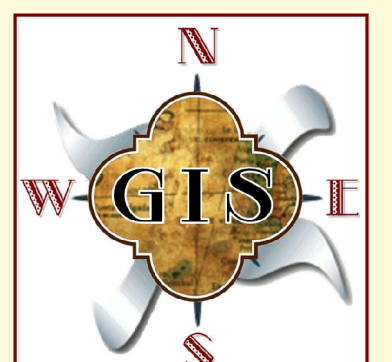
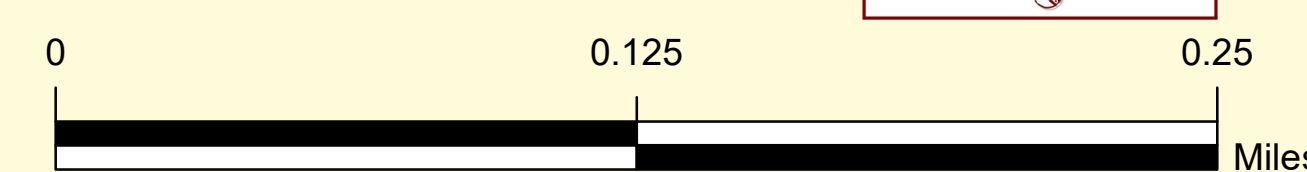
- Residential Single-Family District
- Multi-Family District
- Residential Mixed District

- Manufactured Housing District
- Mixed Use District
- Commercial District
- Neighborhood Commercial District

- Downtown District
- General Industrial District
- Heavy Industrial District
- Infill Development Zone
- Downtown Business District

- Form Base Zoning District
- Office District
- Resource Protection District
- Unzoned Right of Way

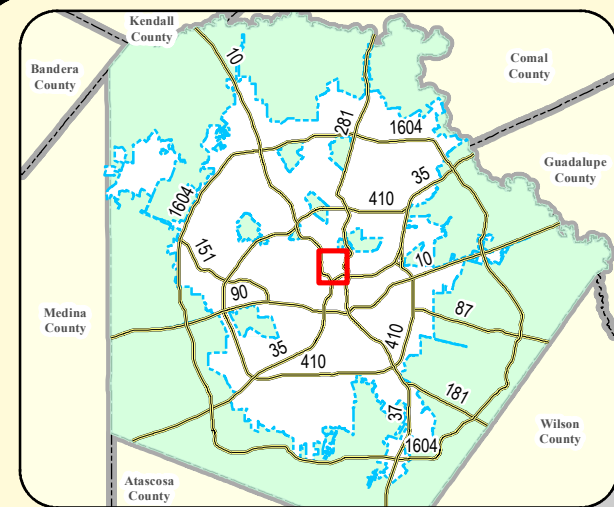
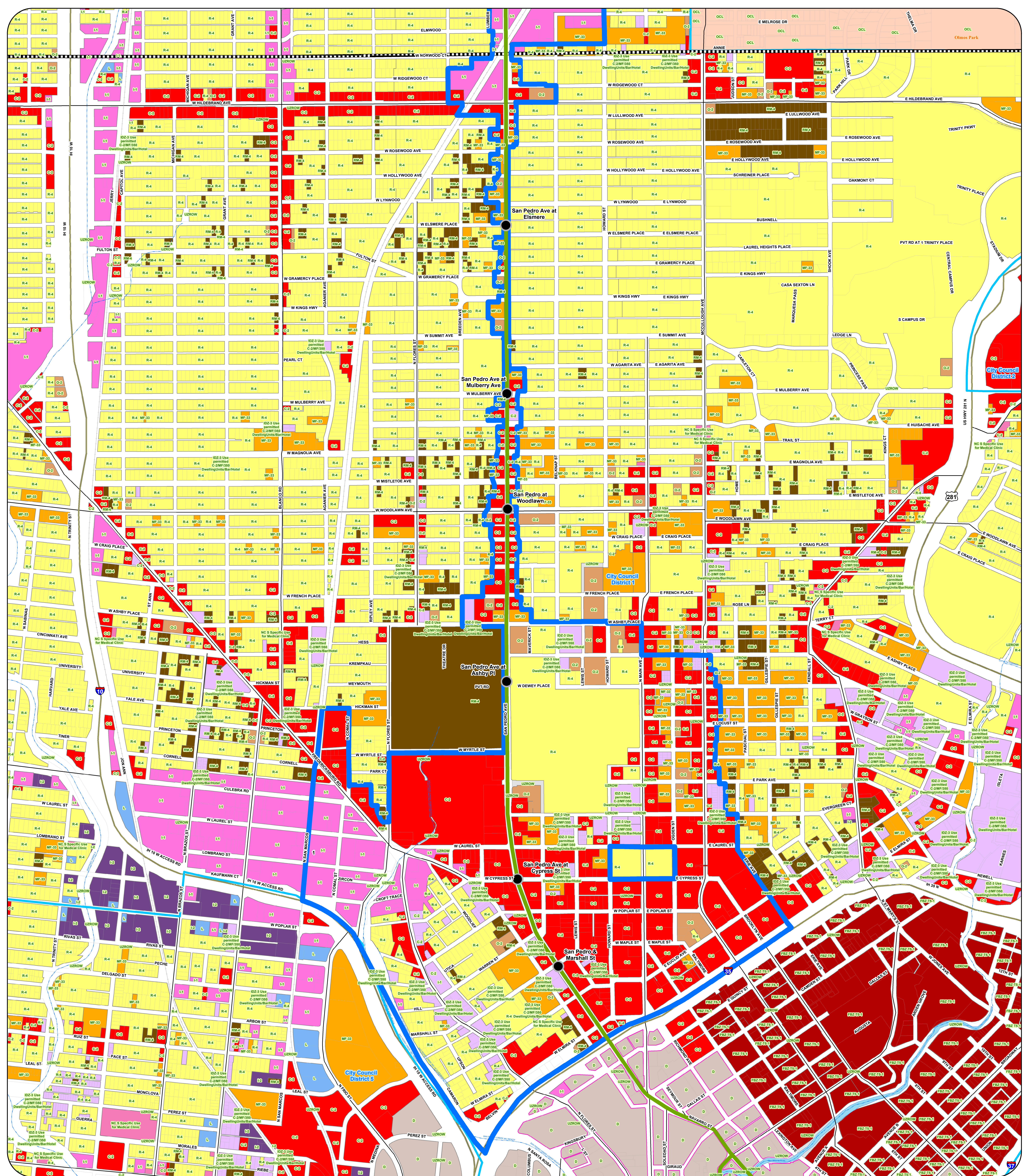
- ART NS Stations
- CRAG Boundary
- ART Corridor
- City of San Antonio
- City Council Boundary
- Cities and Towns
- Bexar County
- Military Bases
- Creeks
- Lakes
- ART Corridor



City of San Antonio 2024

Olmos Creek to Northern Edge of CRAG Boundary TOD

City of San Antonio
Information Technology Services Department
GIS Public Services Division
City Tower
100 W. Houston St., 18th floor
San Antonio, TX 78205



Data Source: City of San Antonio Enterprise GIS, Bexar Metro 911, Bexar Appraisal District

This Geographic Information System Product, received from the City of San Antonio is provided "as is" without warranty of any kind, and the City of San Antonio expressly disclaims all express and implied warranties, including but not limited to the implied warranties of merchantability and fitness for a particular purpose. The City of San Antonio does not warrant, guarantee, or make any representations regarding the use, or the results of the use, of the information provided to you by the City of San Antonio in terms of correctness, accuracy, reliability, timeliness or otherwise. The entire risk as to the results and performance of any information obtained from the City of San Antonio is entirely assumed by the recipient. Please contact the responsible City of San Antonio Department for specific determinations.

Map Created by: g07173
Map File Location: C:\GIS\GIS\Transportation\CRAG\Boundary\to Interstate 35.mxd
Map Last Edited: 10/20/2024
PDF Filename: CRAG Boundary to Interstate 35.pdf

Current Zoning

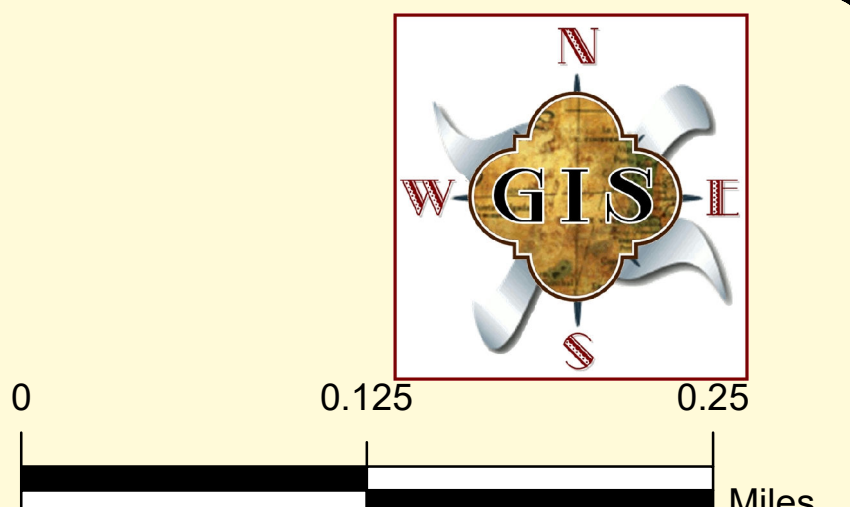
- Residential Single-Family District
- Multi-Family District
- Residential Mixed District
- Manufactured Housing District
- Mixed Use District
- Commercial District
- Neighborhood Commercial District
- Downtown District
- General Industrial District
- Heavy Industrial District
- Infill Development Zone
- Form Base Zoning District
- Office District
- Resource Protection District
- Unzoned Right of Way
- Downtown Business District

- ART NS Stations
- CRAG Boundary
- ART Corridor
- TOD Applicability Line
- City of San Antonio
- City Council Boundary
- Cities and Towns
- Bexar County
- Military Bases
- Creeks
- Lakes

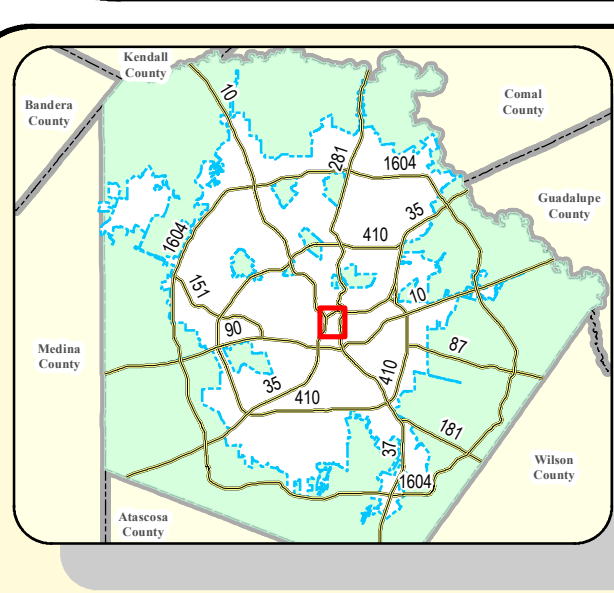
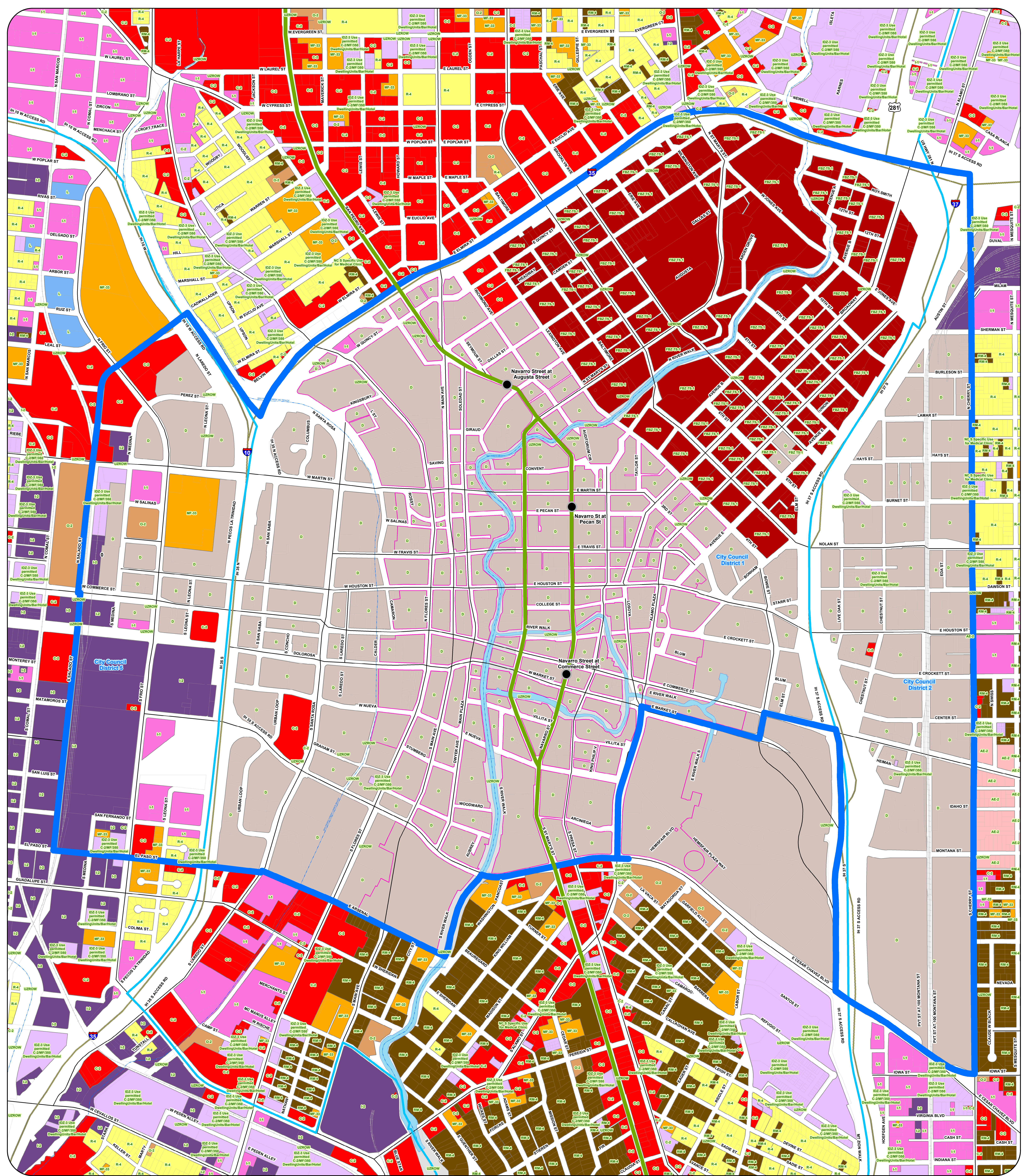
Overlay Districts such as Airport Overlay, Neighborhood Conservation, Historic Overlay, Historic Landmarks, River Improvement Overlay, and Mission Protection Overlay, and any others are not shown on the map

DRAFT

City of San Antonio 2024 CRAG Boundary to Interstate 35



City of San Antonio
Information Technology Services Department
GIS Public Services Division
City Tower
100 W. Houston St., 18th floor
San Antonio, TX 78205



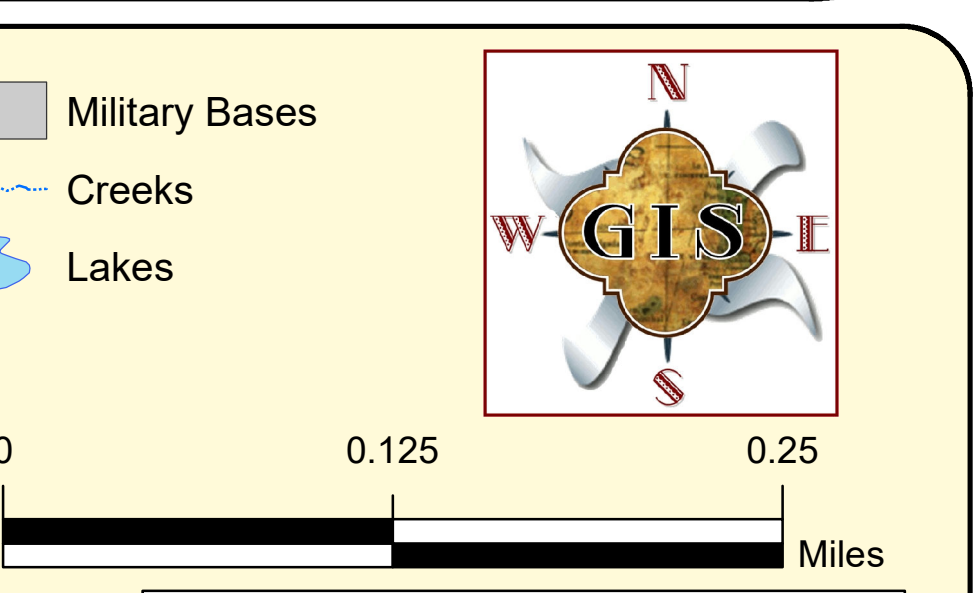
Data Source: City of San Antonio Enterprise GIS, Bexar Metro 911, Bexar Appraisal District

This Geographic Information System Product, received from the City of San Antonio, is provided "as is" without warranty of any kind, and the City of San Antonio expressly disclaims all express and implied warranties, including but not limited to the implied warranties of merchantability and fitness for a particular purpose. The City of San Antonio does not warrant, guarantee, or make any representations regarding the use, or the results of the use, of the information provided to you by the City of San Antonio in terms of correctness, accuracy, reliability, timeliness or otherwise. The entire risk as to the results and performance of any information obtained from the City of San Antonio is entirely assumed by the recipient. Please contact the responsible City of San Antonio Department for specific determinations.

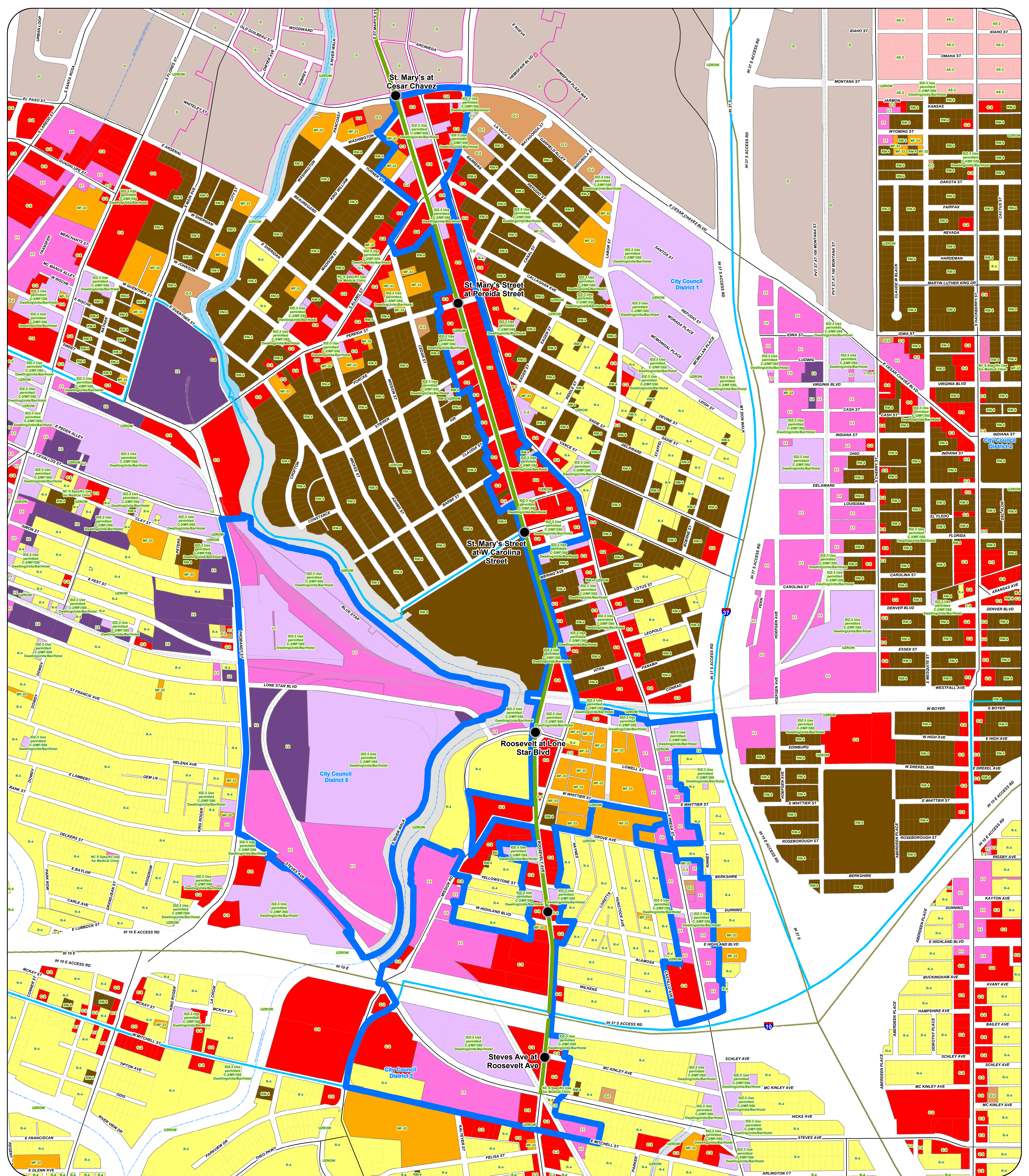
Map Created by: g071173
Map Revision: 01/2024
Map Last Edited: 10/10/2024
PDF Filename: Downtown.pdf

- | | | | | | | | |
|------------------------------------|------------------------------------|-------------------------------|----------------------------------|------------------------------|---------------------|-----------------------|----------------|
| Current Zoning | General Industrial District | Multi-Family District | Neighborhood Commercial District | Form Base Zoning District | ART NS Stations | City of San Antonio | Military Bases |
| Multi-Family District | Heavy Industrial District | Residential Mixed District | Downtown District | Office District | CRAG Boundary | City Council Boundary | Creeks |
| Commercial District | Office District | Manufactured Housing District | General Industrial District | Resource Protection District | ART Corridor | Cities and Towns | Lakes |
| Downtown District | Form Base Zoning District | Mixed Use District | Heavy Industrial District | Unzoned Right of Way | TOD Station Buffers | Bexar County | |
| Residential Single-Family District | Residential Single-Family District | Commercial District | Infill Development Zone | Downtown Business District | | | |

DRAFT City of San Antonio 2024 Downtown



City of San Antonio
Information Technology Services Department
GIS Public Services Division
100 W. Houston St., 15th floor
San Antonio, TX 78205



Current Zoning

- Residential Single-Family District
- Multi-Family District
- Residential Mixed District

- Manufactured Housing District
- Mixed Use District
- Commercial District
- Neighborhood Commercial District
- General Industrial District
- Heavy Industrial District
- Infill Development Zone

- Downtown District
- Office District
- Resource Protection District
- Unzoned Right of Way
- Downtown Business District
- Form Base Zoning District

- ART NS Stations
- TOD Applicability Line
- C-RAG Boundary
- ART Corridor

- City of San Antonio
- Cities and Towns
- Bexar County
- Military Bases
- Creeks
- Lakes

Overlay Districts such as Airport Overlay, Neighborhood Conservation, Historic Overlay, Historic Landmarks, River Improvement Overlay, and Mission Protection Overlay, and any others are not shown on the map

Data Source: City of San Antonio Enterprise GIS, Bexar Metro 911, Bexar Appraisal District
This Geographic Information System Product, received from the City of San Antonio is provided "as is" without warranty of any kind, and the City of San Antonio expressly disclaims all express and implied warranties, including but not limited to the implied warranties of merchantability and fitness for a particular purpose. The City of San Antonio does not warrant, guarantee, or make any representations regarding the use, or the results of the use, of the information provided to you by the City of San Antonio in terms of correctness, accuracy, reliability, timeliness or otherwise. The entire risk as to the results and performance of any information obtained from the City of San Antonio is entirely assumed by the recipient. Please contact the responsible City of San Antonio Department for specific determinations.
Map Created by: g01173
Map Last Edited: 10/10/2024
PDF Filename: Cesar Chavez to Steves.pdf

DRAFT

City of San Antonio 2024

Cesar Chavez to Steves

City of San Antonio
Information Technology Services Department
GIS Public Services Division
100 W. Houston St., 18th floor
San Antonio, TX 78205