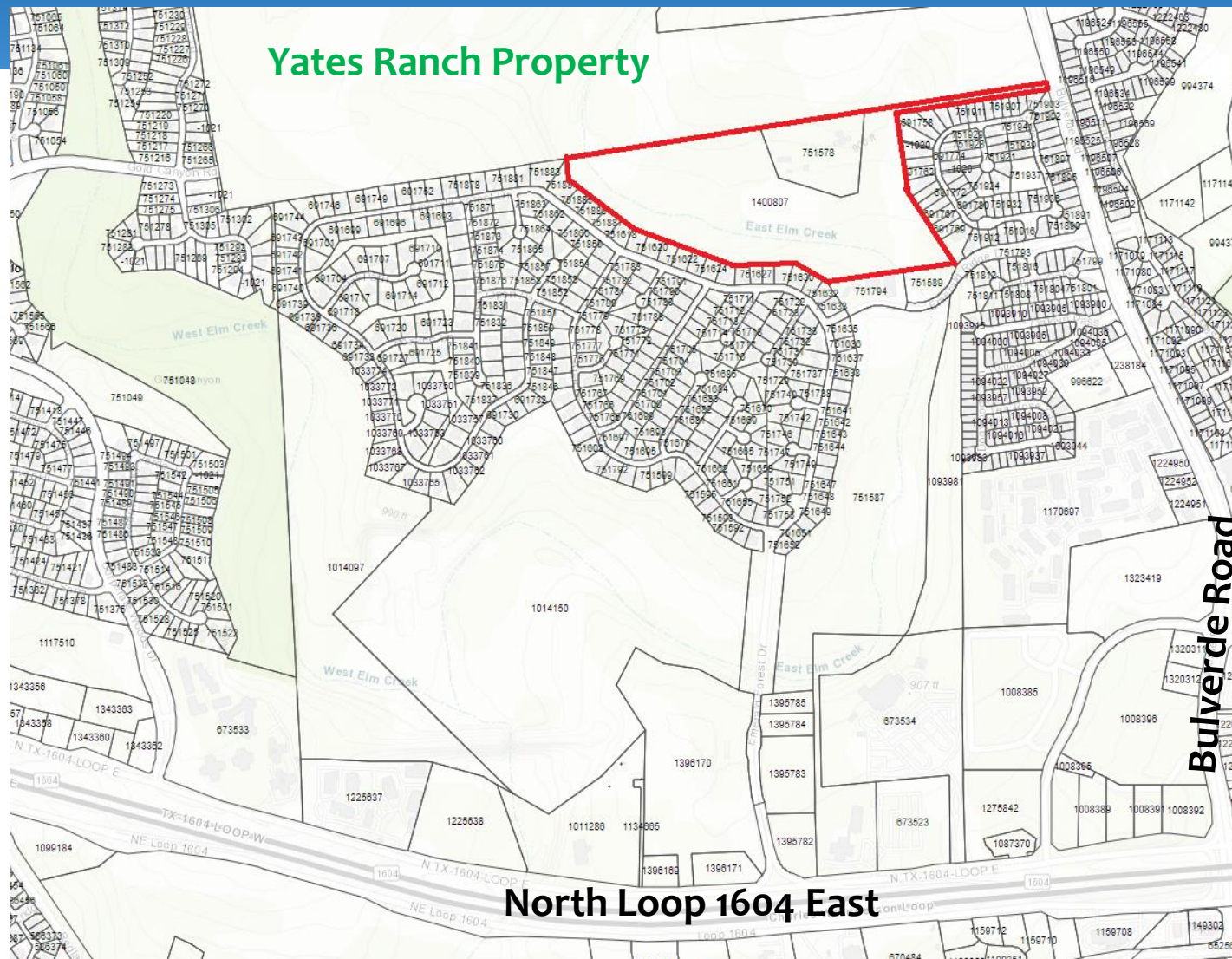




Trevino Property
Harrison Ranch
Smart Ranch Phase II
Hoesen Ranch

Trevino Property (~39.445 acres) Bexar County



Trevino Property (~39.445 acres) Bexar County

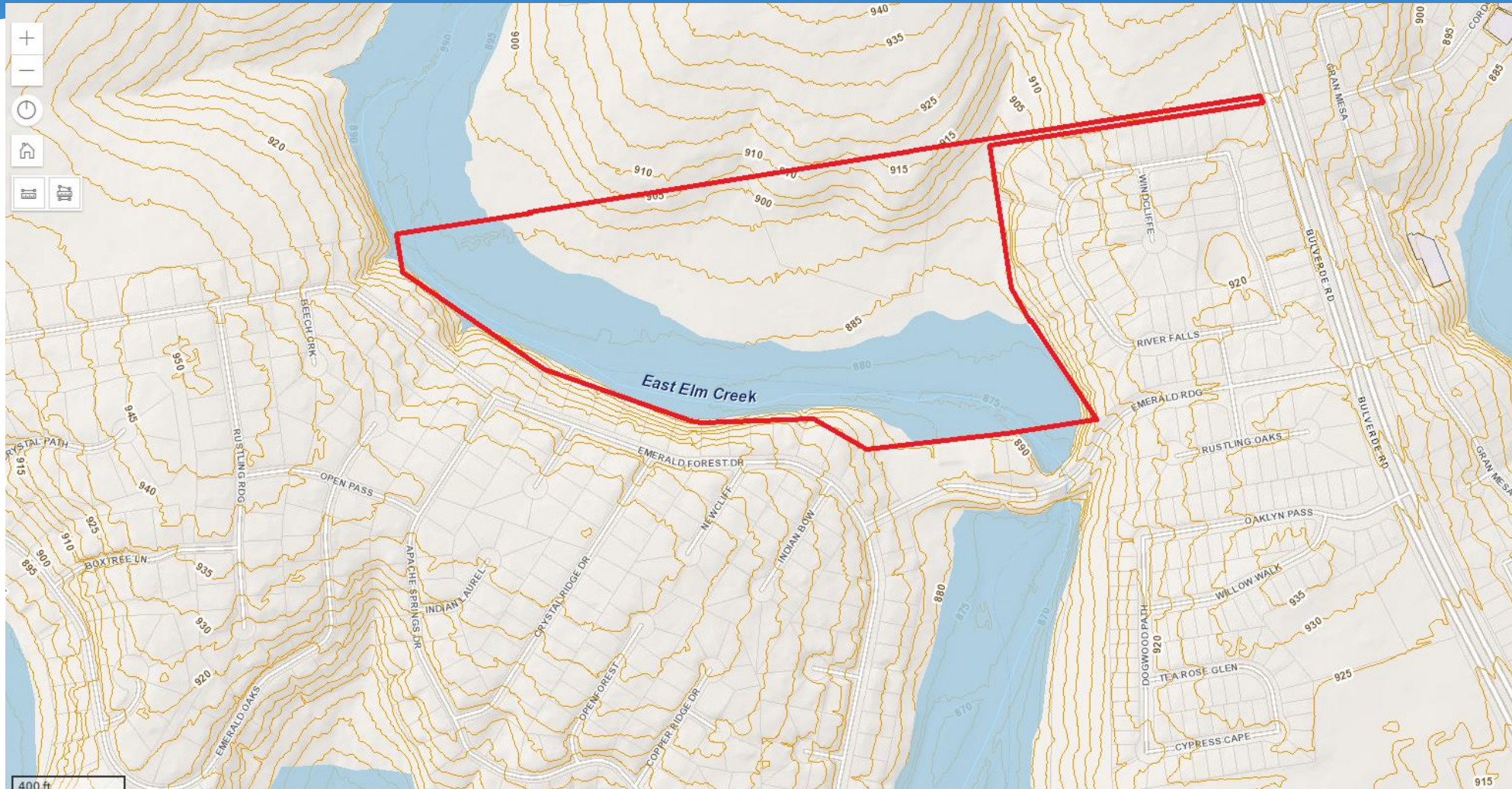
- 100% EARZ
- Top 30% SET
- Located in Council Districts 9 and 10
- Contiguous with Yates Ranch property
- Owners seeking fee simple sale
- EAA ranked high for water quality and moderate for water quantity; appraisal completed
- **Requesting Stage 2 consideration**



Trevino Property (~39.445 acres) Bexar County



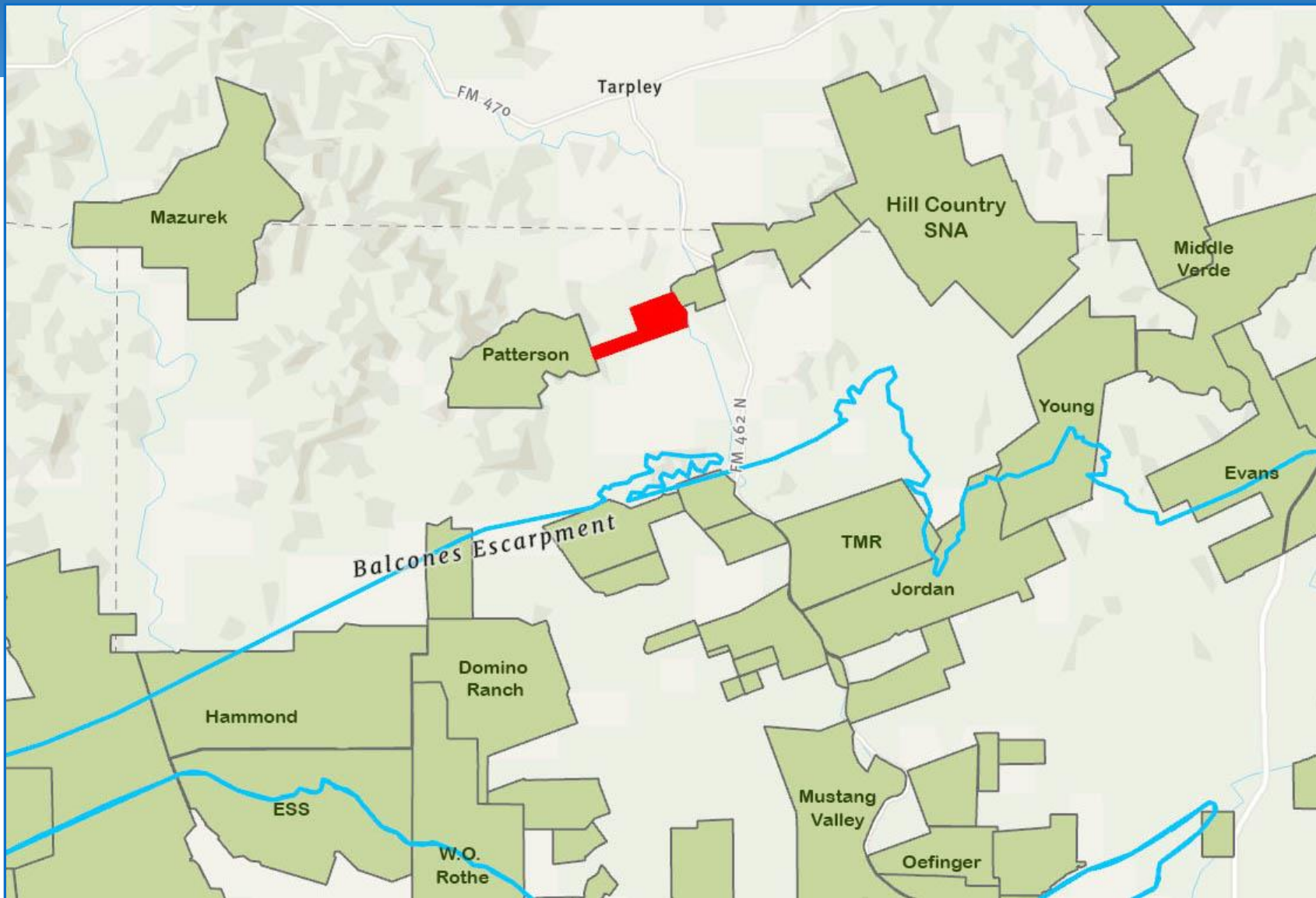
Trevino Property (~39.445 acres) Bexar County



Trevino Property (~39.445 acres) Bexar County



Harrison Ranch (~401 acres) Medina County



Harrison Ranch (~401 acres) Medina County

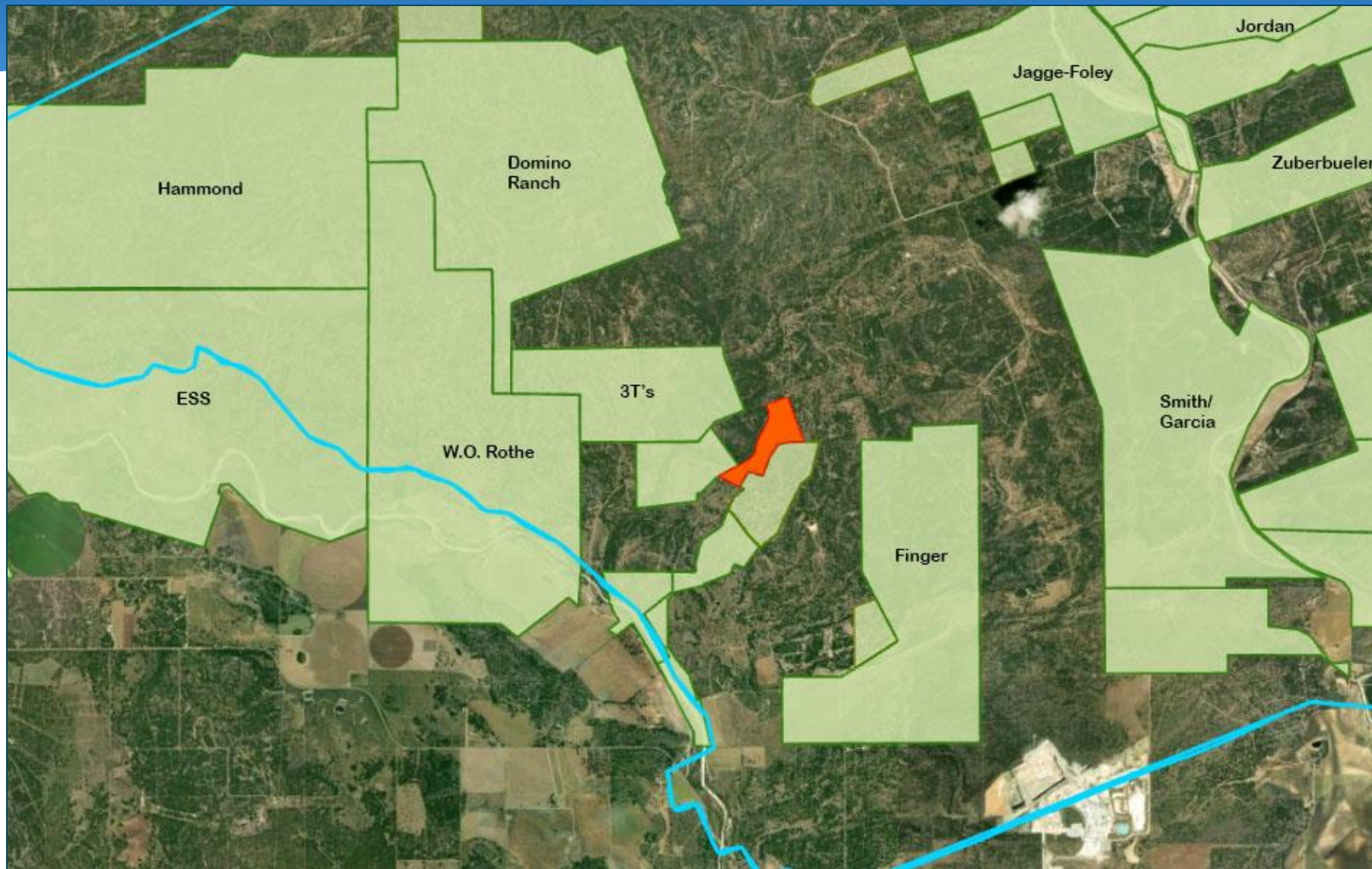
- 100% EACZ
- Top 20% SET Model
- Borders Hondo Creek
- EAA ranked high for water quality and high for water quantity; appraisal completed
- **Requesting Stage 2 consideration**



Harrison Ranch (~401 acres) Medina County



Smart Ranch Phase II (~97 Acres) Medina County



Smart Ranch Phase II (~97 Acres) Medina County

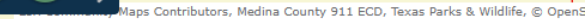
- Connects Smart, Bendele, Saunders, Tschirhart, W.O. Rothe etc.
- Top 50% in SET model
- Previously evaluated as Henderson Ranch; due diligence updates required
- EAA geological assessment report ranked high for water quality and water quantity; Appraisal completed
- **Requesting Stage 2 consideration**



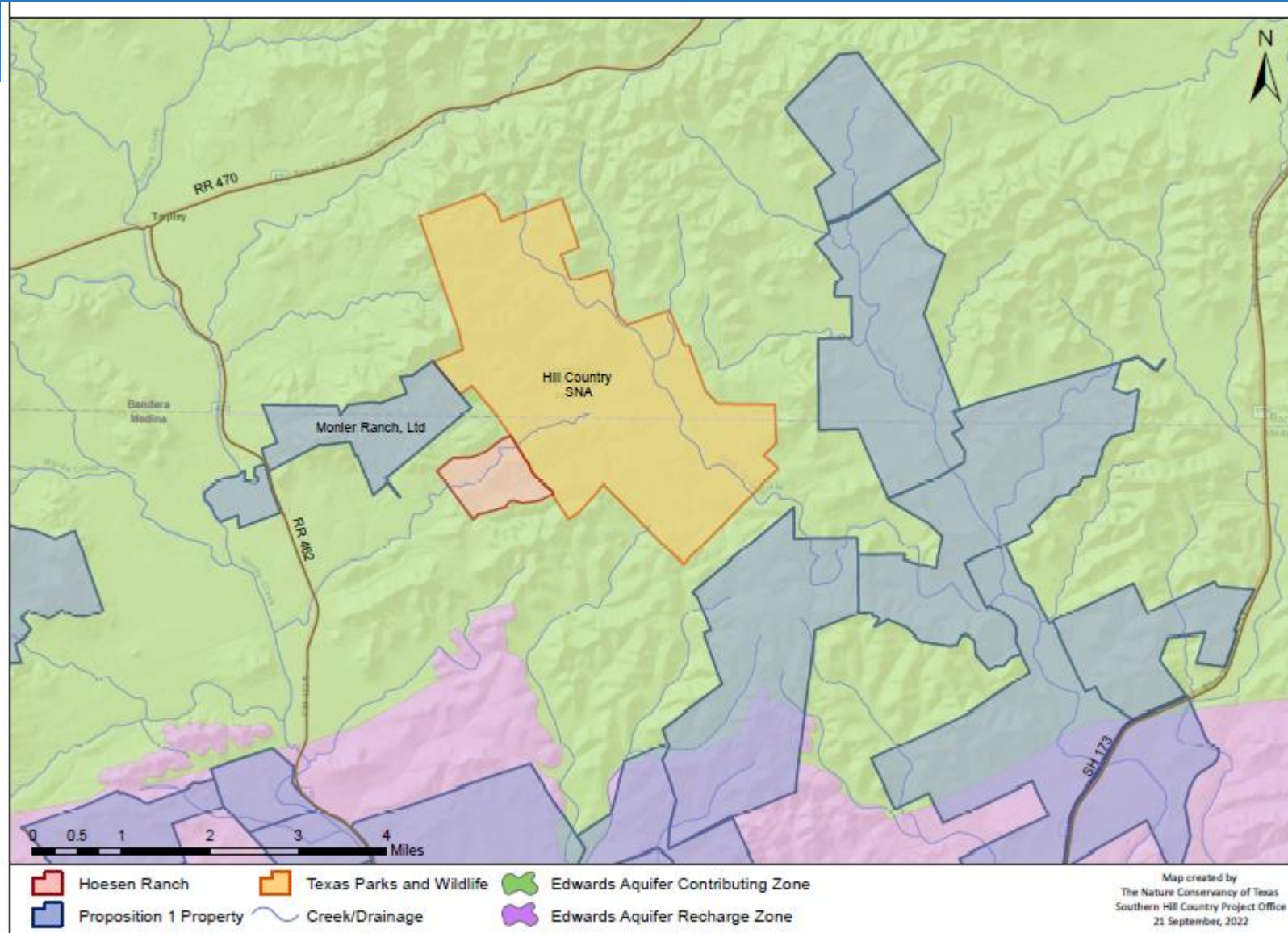


Smart Ranch Phase II (~97 Acres) Medina County





Hoesen Ranch (~394 Acres) Medina County



Hoesen Ranch (~394 Acres) Medina County

- Located in Contributing Zone adjacent to Hill Country State Natural Area and southeast of Monier Ranch CE
- Located in Hondo Creek watershed with Bandera Creek frontage
- Ranks in the Top 20% of the SET model
- EAA ranked high for water quality and high for water quantity; appraisal completed
- **Requesting Stage 2 consideration**



Hoesen Ranch (~394 Acres) Medina County



Hoese Ranch (~394 Acres) Medina County



Hoesen Ranch (~394 Acres) Medina County

