

The Geologic Evaluation Process

Assessing Water Quantity and Quality for Potential EAPP Properties

Brent R. Doty, P.G.
Research Manager
Edwards Aquifer Authority



STEWARDSHIP

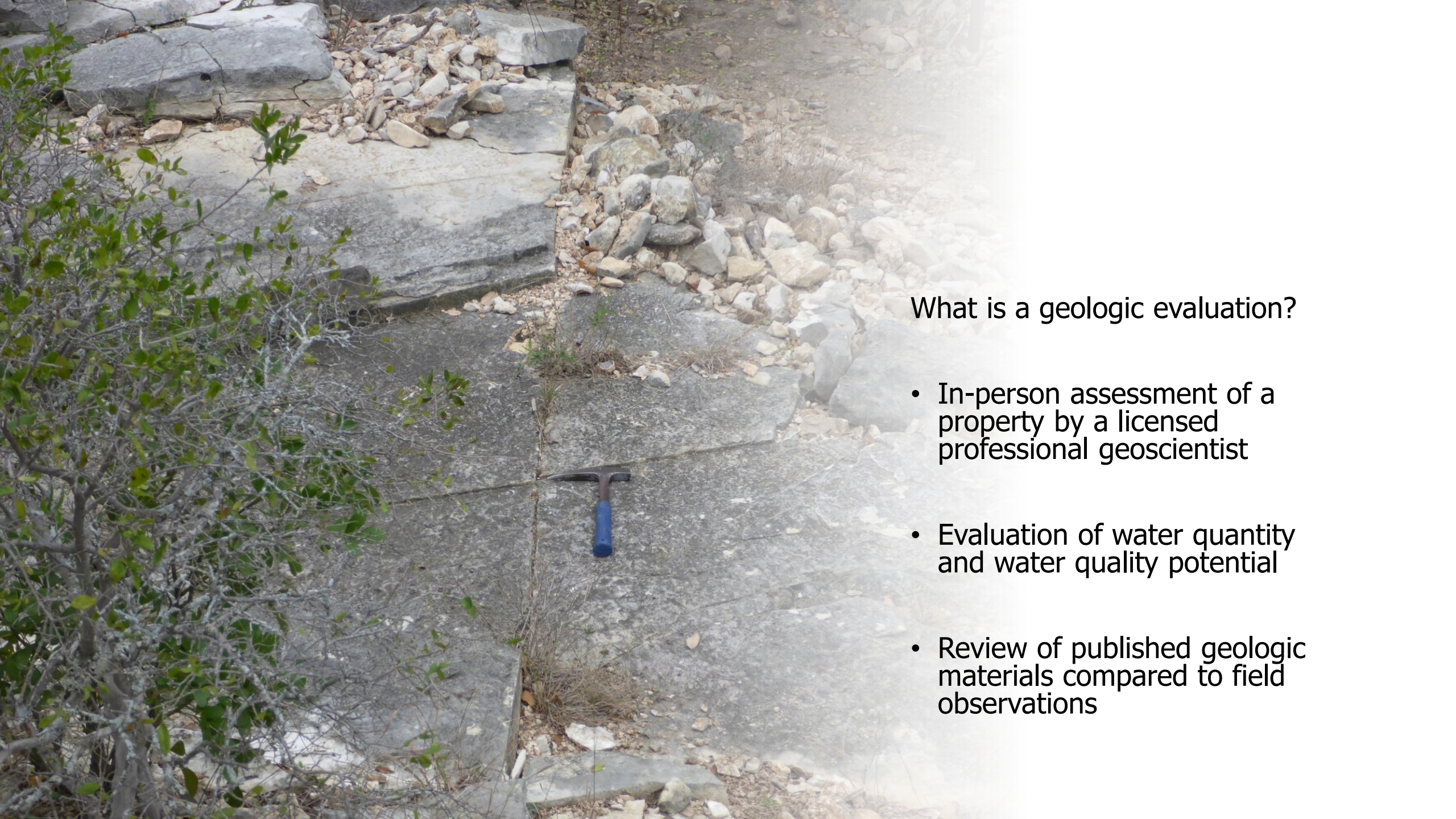
INTEGRITY

SCIENCE-BASED

PROFESSIONALISM

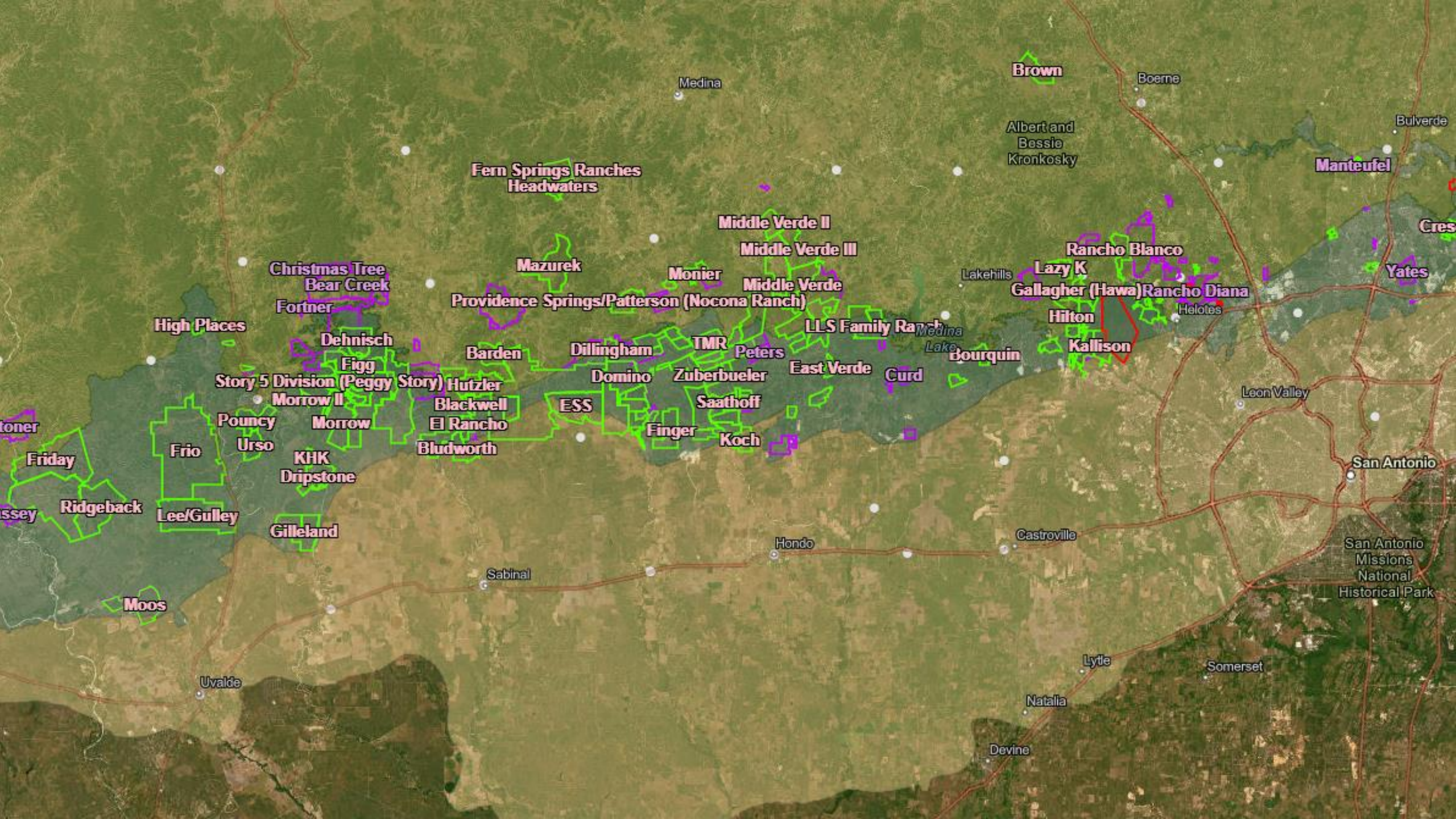
COLLABORATION

CREATIVITY

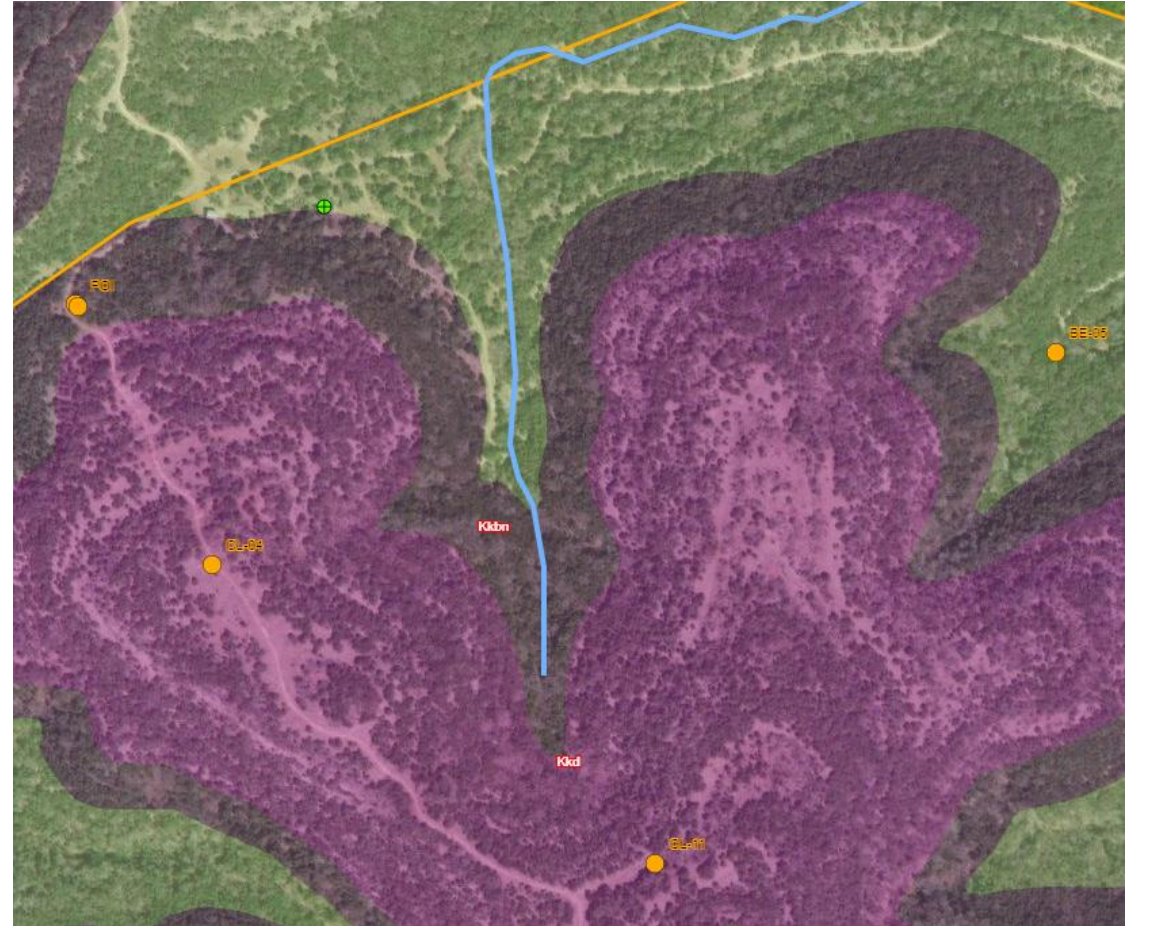
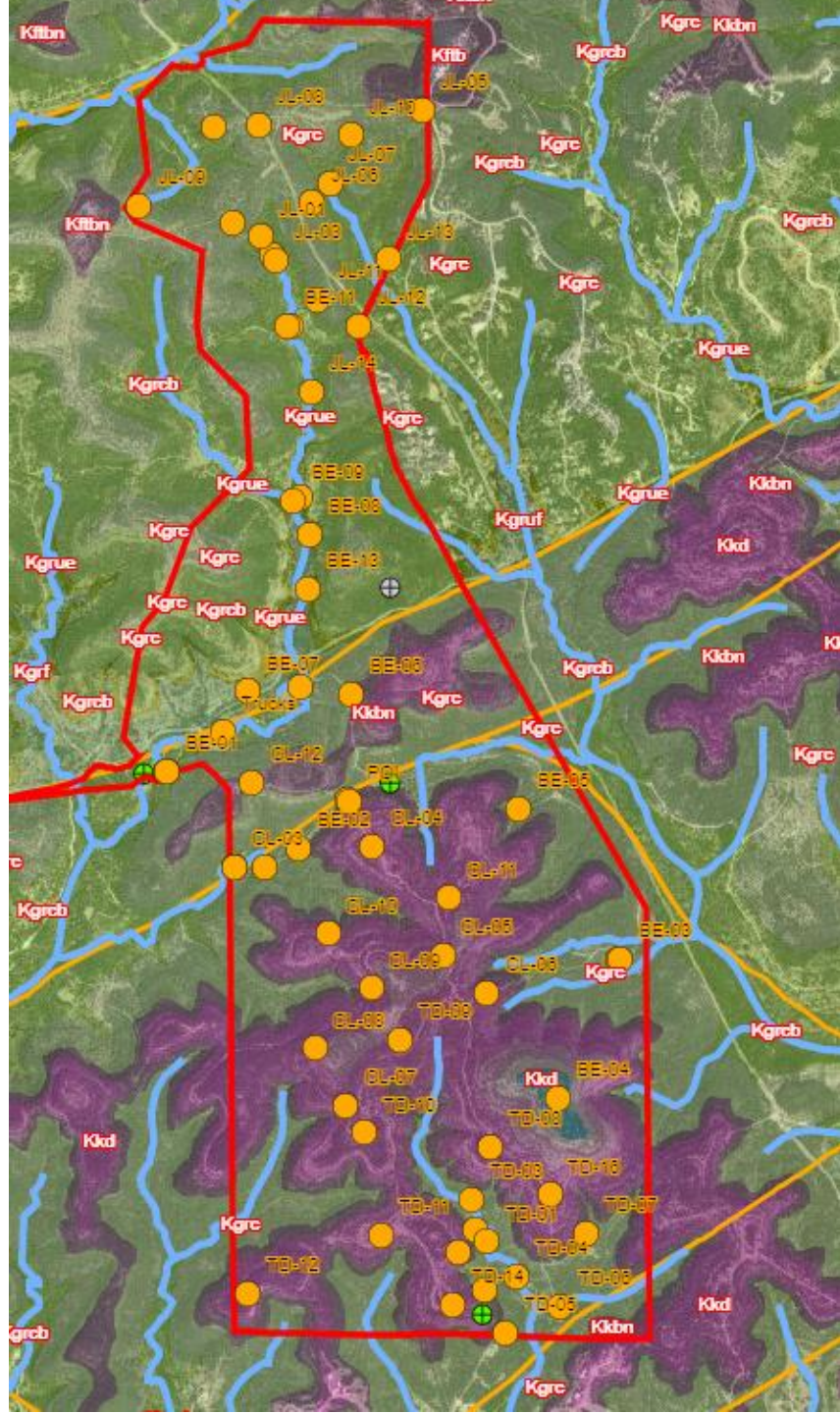


What is a geologic evaluation?

- In-person assessment of a property by a licensed professional geoscientist
- Evaluation of water quantity and water quality potential
- Review of published geologic materials compared to field observations



Ranch Name	Approximate Location
Christmas Tree Bear Creek Fortner	Northwest
High Places	Northwest
Friday	West
Ridgeback	West
Frio	West
Lee/Gulley	West
Moos	Southwest
Uvalde	Southwest
Gilleland	Southwest
KHK Dripstone	Southwest
Morrow II	West
Pouncey Urso	West
Story 5 Division (Peggy Story)	West
Hutzler	West
Blackwell El Rancho	West
Bludworth	West
Barden	West
ESS	West
Domino	West
Dillingham	West
Finger	West
Koch	West
Saathoff	West
Zuberbueler	West
TMR	West
Peters	West
East Verde	West
Curd	West
Bourquin	West
Medina Lake	West
LLS Family Ranch	West
Gallagher (Hawa)	West
Hilton	West
Kallison	West
Rancho Diana	West
Helotes	West
Leon Valley	West
San Antonio	West
San Antonio Missions National Historical Park	West
Somerset	West
Natalla	West
Devine	West
Castroville	West
Hondo	West
Sabinal	West
Uvalde	West
Boerne	West
Bulverde	West
Manteufel	West
Cres	West
Yates	West
Rancho Blanco	West
Lazy K	West
Albert and Bessie Kronkosky	West
Brown	West
Medina	West
Fern Springs Ranches Headwaters	West
Mazurek	West
Monier	West
Middle Verde II	West
Middle Verde III	West
Middle Verde	West
Providence Springs/Patterson (Nocona Ranch)	West





Water Quantity

- How will a prospective property benefit the Aquifer system in terms of added recharge
- Sites evaluated based on geology, structure, karst features, and location
- Rankings range from "low", "moderate", or "high"



Water Quality

- Properties are evaluated based on the potential water quality of recharge benefiting the Aquifer System.
- Assessment based on property land use, surrounding development, and land management.

Questions?

