

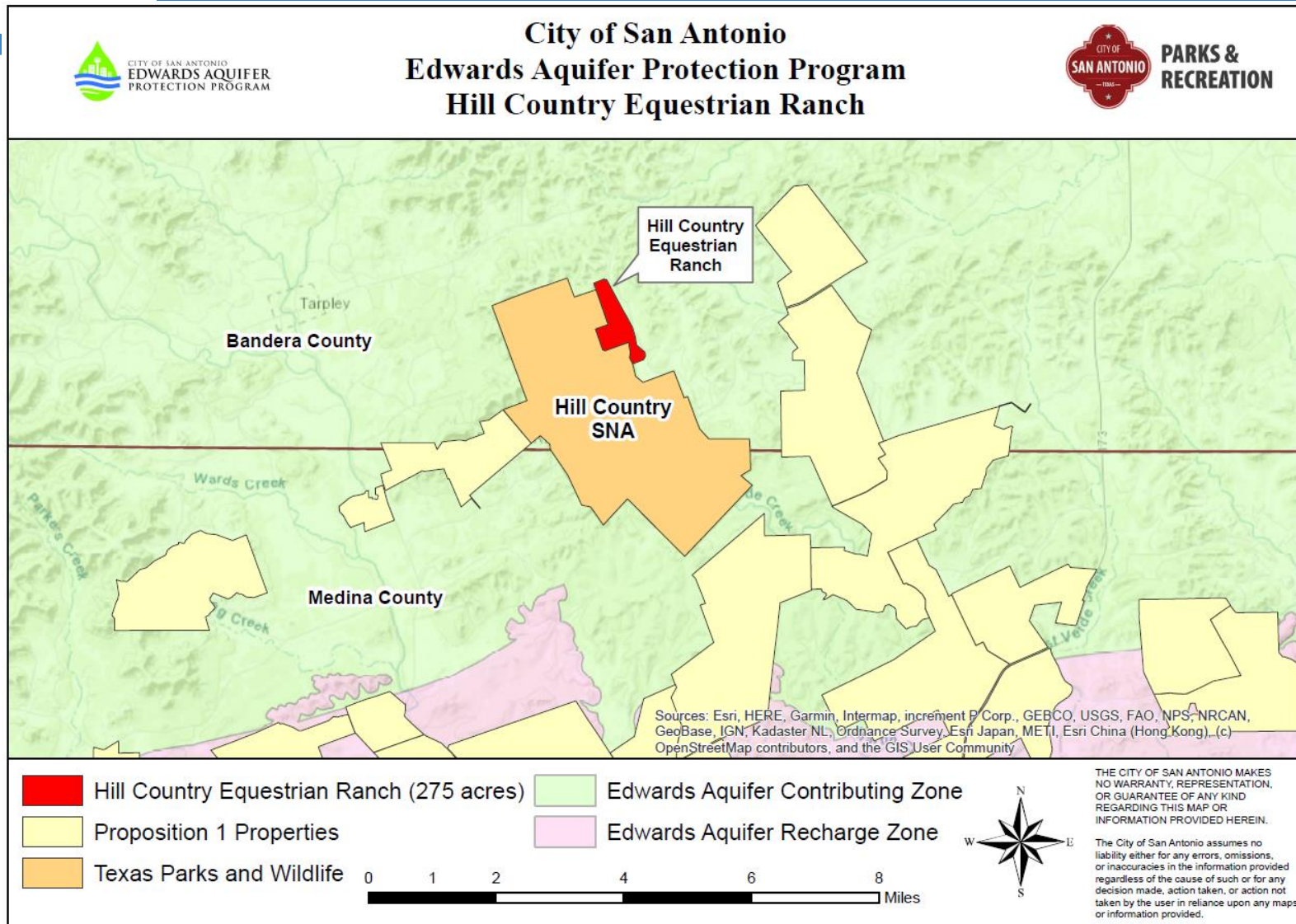


City of San Antonio

Edwards Aquifer Protection Program

Hill Country Equestrian Ranch

Hill Country Equestrian Ranch (~275 acres) Bandera County

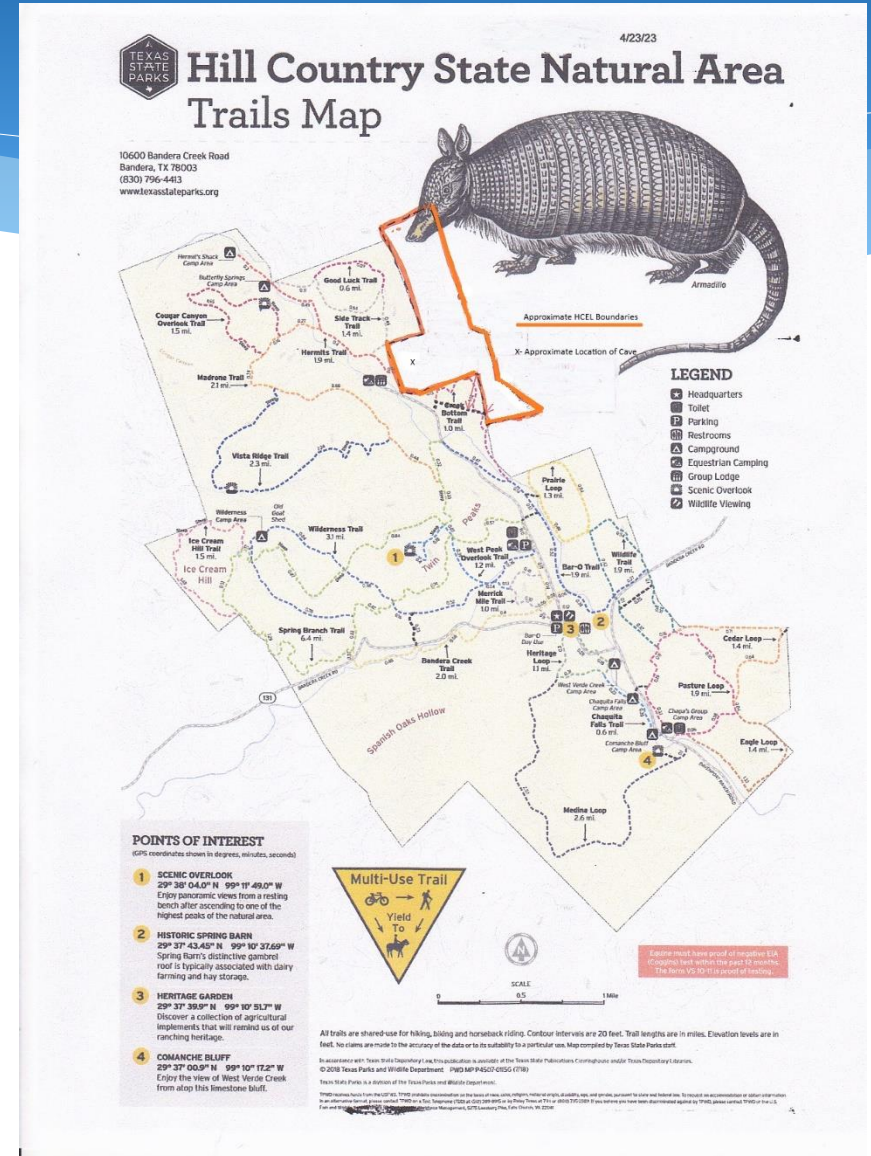


Hill Country Equestrian Ranch (~275 acres) Bandera County

- 100% EACZ
- 60% SET
- Located adjacent to Hill Country State Natural Area
- Contains creek and karst features
- **Requesting Stage 1 consideration**



Hill Country Equestrian Ranch (~275 acres) Bandera County



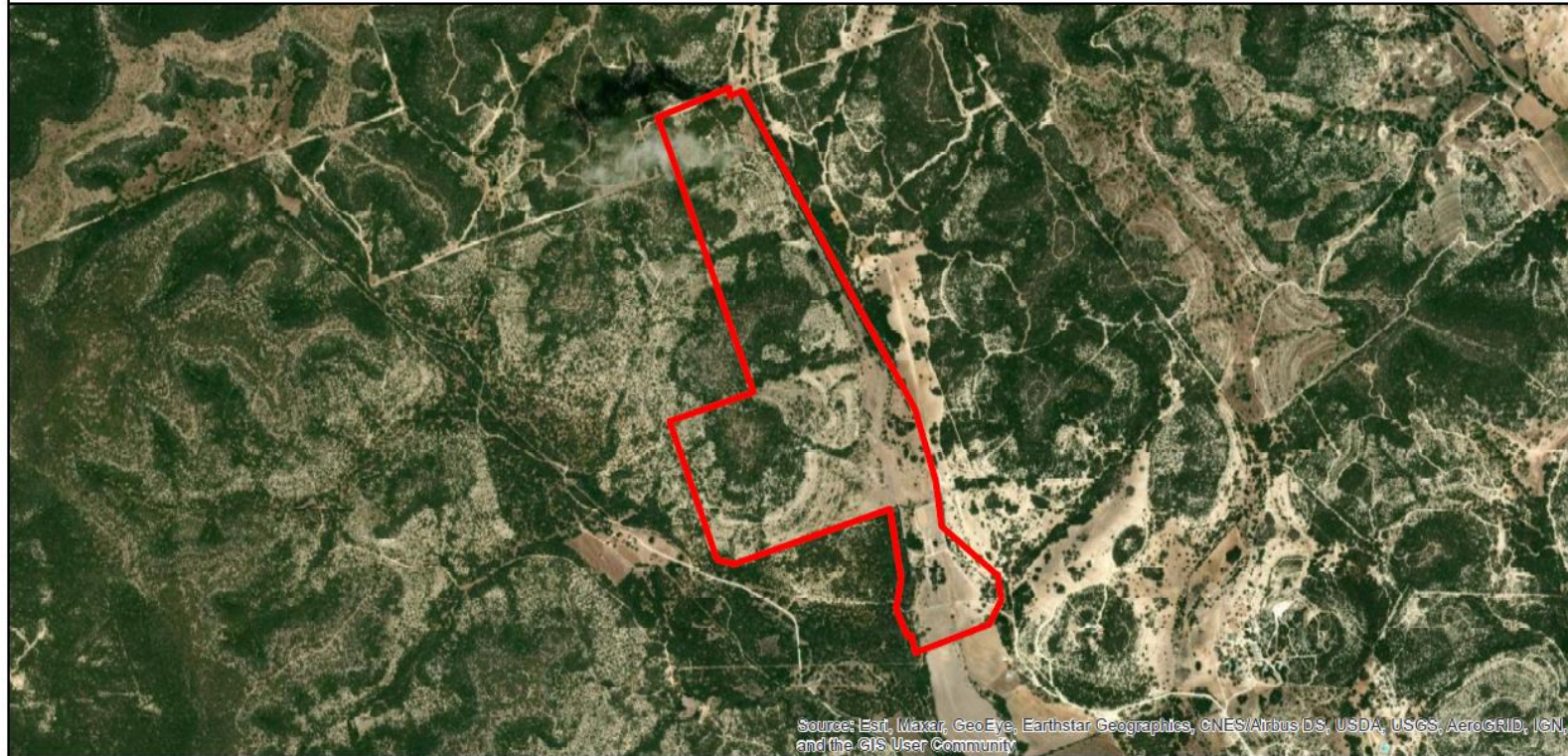
Hill Country Equestrian Ranch (~275 acres) Bandera County



Hill Country Equestrian Ranch (~275 acres) Bandera County



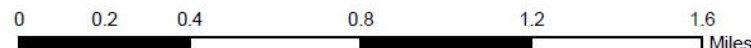
City of San Antonio
Edwards Aquifer Protection Program
 Hill Country Equestrian Ranch - Aerial View



Source: Esri, Maxar, GeoEye, Earthstar Geographics, CNES/Airbus DS, USDA, USGS, AeroGRID, IGN, and the GIS User Community



Hill Country Equestrian Ranch (275 acres)



THE CITY OF SAN ANTONIO MAKES NO WARRANTY, REPRESENTATION, OR GUARANTEE OF ANY KIND REGARDING THIS MAP OR INFORMATION PROVIDED HEREIN.

The City of San Antonio assumes no liability either for any errors, omissions, or inaccuracies in the information provided regardless of the cause of such or for any decision made, action taken, or action not taken by the user in reliance upon any maps or information provided.

Hill Country Equestrian Ranch (~275 acres) Bandera County



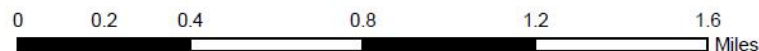
City of San Antonio Edwards Aquifer Protection Program Hill Country Equestrian Ranch - Topo View



Copyright © 2013 National Geographic Society. Recubed



Hill Country Equestrian Ranch (275 acres)



THE CITY OF SAN ANTONIO MAKES NO WARRANTY, REPRESENTATION, OR GUARANTEE OF ANY KIND REGARDING THIS MAP OR INFORMATION PROVIDED HEREIN.

The City of San Antonio assumes no liability either for any errors, omissions, or inaccuracies in the information provided regardless of the cause of such or for any decision made, action taken, or action not taken by the user in reliance upon any maps or information provided.

Hill Country Equestrian Ranch (~275 acres) Bandera County

