

# **San Antonio Events and Holiday Tips**



**December 18, 2024**  
**B Session**

# Travis Park Holiday Events



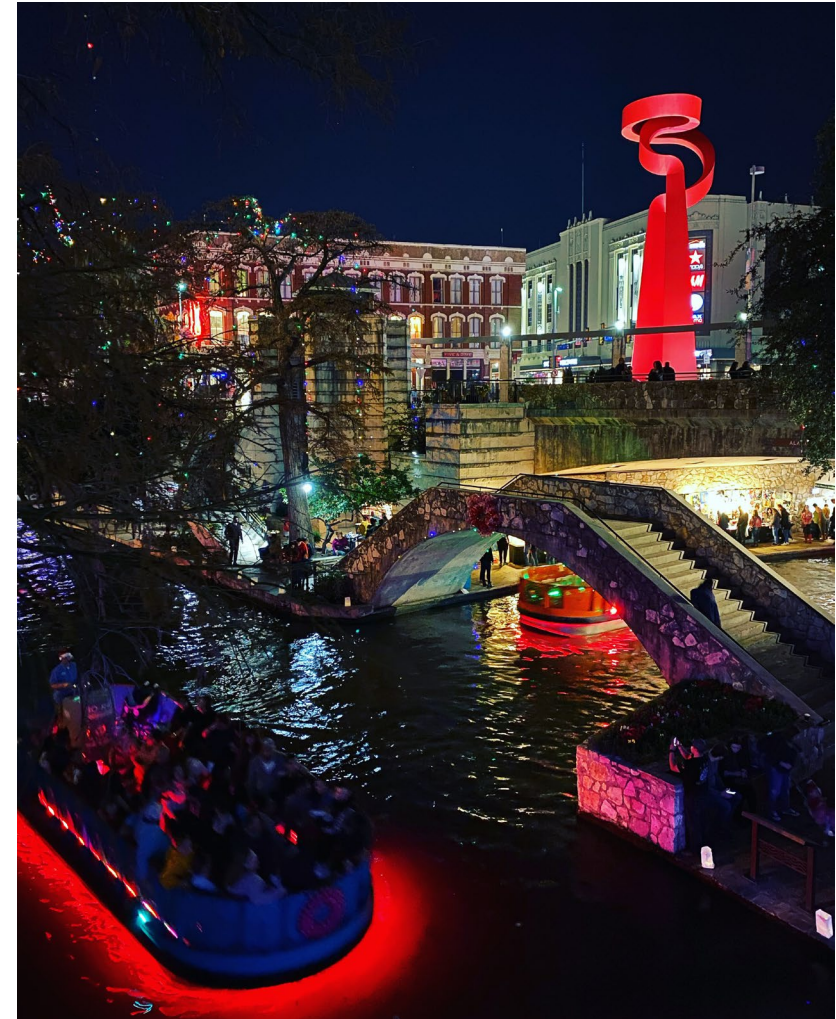
- H-E-B Christmas Tree
  - Now through Jan. 7, 2025
- Rotary Ice Rink
  - Now through Jan. 5, 2025



# Holiday Lights



- River Walk and Houston Street
- Now through January 13, 2025
- Stroll, dine, shop, or enjoy a Go Rio boat tour to experience the over 200,000 lights along the River Walk



# Holidays on Houston Street





# Holidays on Houston Street





# More December Events

Over 20 events this month, including:

- Homemade Christmas at Alamo
- Holiday Night City at TPR
- HOT Holidays on Houston Street
- Chanukah on the River
- 2024 Winter Holiday Camp
- TubaMeister Holiday Concert
- Valero Alamo Bowl
- Celebrate SA: NYE Countdown





# CelebrateSA: NYE Countdown



- December 31, 2024
- 6:00PM – 12:00AM
- Downtown San Antonio, Market Street, La Villita, Hemisfair, and River Walk Districts
- Live music, food, carnival games, and festive fun – FREE admission



# January Events

- MLK March
- Climate Ready Neighborhoods: Community Resilience Fair
- Housing in San Antonio Event





# Martin Luther King Jr. March



- 38<sup>th</sup> MLK March
- Monday, January 20, 2025 at 10:00 AM
- Food and merchandise vendors, youth area, multicultural performances

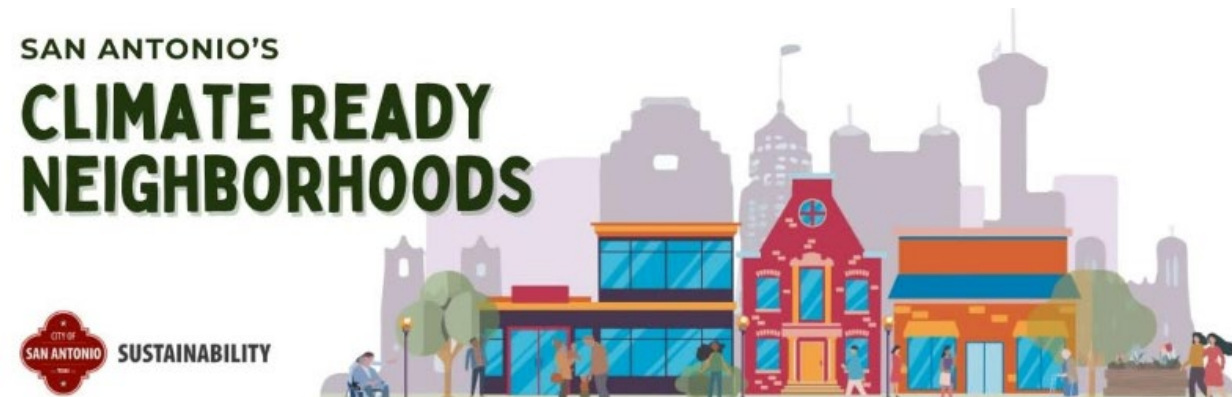


# Climate Ready Neighborhoods: Community Resilience Fair



- Interactive exhibits and hands-on resources to build community resilience and climate readiness
- Learn how to support communities to start neighborhood Climate Ready PODS (points of distribution)

- January 21, 2025 at 5PM
- Maestro Entrepreneur Center











# Police Department Holiday Safety Tips

- Vehicle Theft and Vehicle Break-ins
- Driving While Intoxicated
- Porch Thefts and Home Burglaries
- Fraud Scams
- Celebratory Gun Fire





# Vehicle Theft and Break-ins Prevention



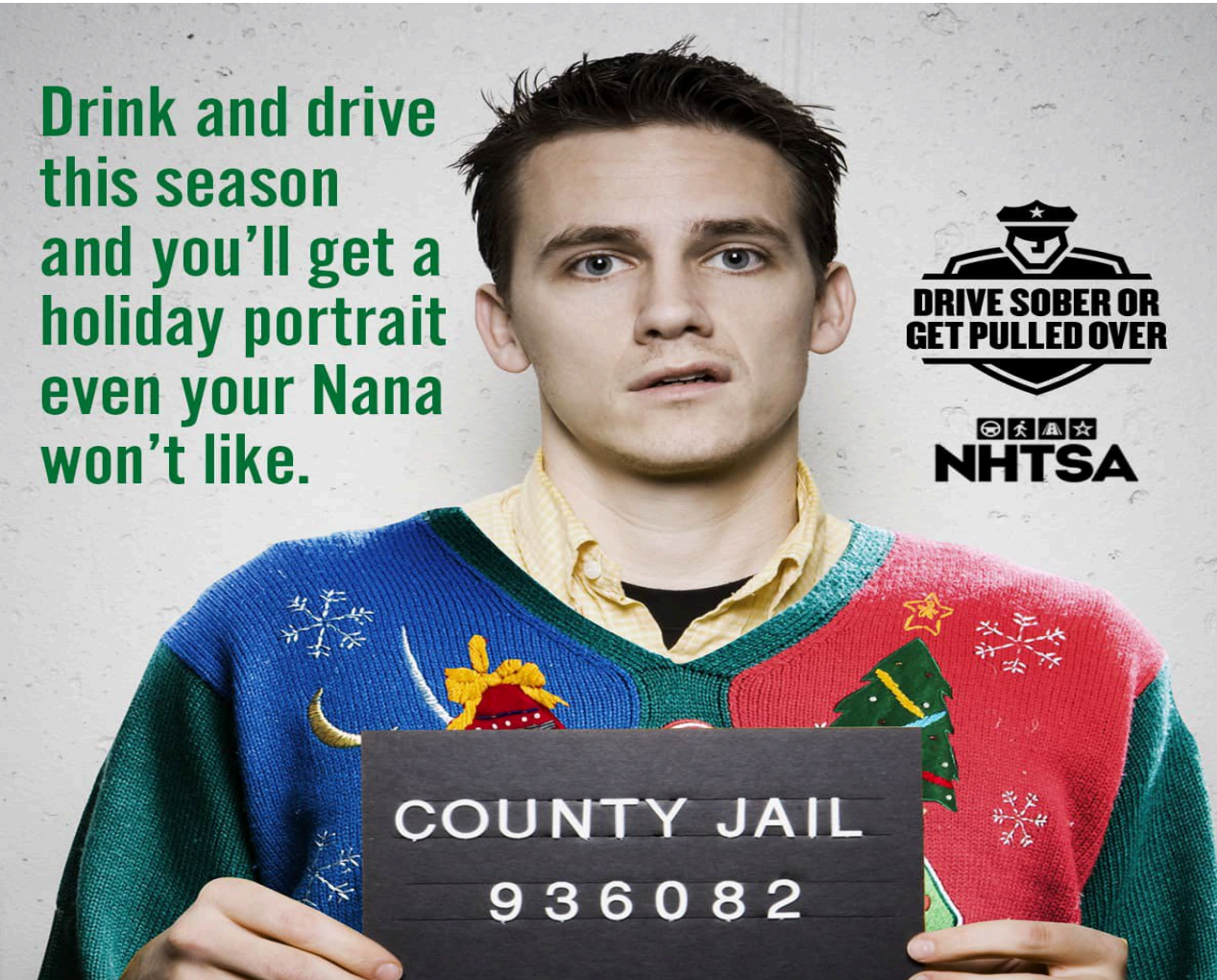
- Park in well-lit areas
- Remove or hide any valuables in your vehicle
- Lock your vehicle and never leave your key fob inside the vehicle
- Place any shopping bags/electronic boxes with brand names in the trunk of the vehicle
- Avoid leaving purchased items in plain view



3,210 or 16.4% of all reported vehicle thefts occurred during the holiday season in 2023

3,500 or 16.2% of all reported vehicle break-ins occurred during the holiday season in 2023

# Driving While Intoxicated Prevention



- Don't Drink and Drive
- Have a sober ride home
- Make arrangements to use a rideshare app or a taxi
- Drive sober or get pulled over

740 or 15.6% of all DWI arrests occurred during the holiday season in 2023



# Porch Thefts and Home Burglaries Prevention



- Be aware of porch pirates
- If you are expecting a package, notify a family member or a neighbor
- Don't leave a pile of boxes on your porch. Burglars are always keeping an eye out
- Cut up your boxes properly, and always recycle
- Do not display Christmas tree or holiday gifts in areas visible from doors or windows
- Keep the exterior of your home well-lit



2,195 or 17% of property theft crimes occurred during the holiday season in 2023



# Fraud Scams Prevention

- The Fake Package Delivery Text Scam
- Social Media Ads with fake stores online or look alike stores
- Fake Charities - Give to organizations you know or have researched
- Fraudulent seasonal jobs
- Fake texts, emails or phone calls from your bank or credit card company

**\*\*\*\*IF IT SOUNDS TOO GOOD TO BE TRUE – IT PROBABLY IS\*\*\*\***





# Celebratory Gunfire

- Celebratory gunfire is illegal in Texas
- Gunfire can cause harm to people, damage property, and affect public safety
- Report gunfire incidents to the Non-Emergency line
- Average daily shots fired calls for 2023 was 102
  - Number of shots fired calls for January 1st: 361 and July 4th: 304



# Holiday Season Public Safety Campaign



- Public Awareness Campaign
- Social Media Blast
- Public Service Announcements
- Collaboration with Local Media
- Community Engagement
- Outreach through Neighborhood Associations
- Digital Engagement (SPIDRTech)
- English and Spanish

## Cuando estes de compras:



- Estacionate donde este iluminado.
- No dejes artículos de valor en tu vehículo.
- **Asegúrate de cerrar tu vehículo** y no dejes las llaves adentro.
- No utilices tu celular mientras que estes caminando, **evita ser distraído.**
- **Asegúrate de no dejar tus bolsas de compras a la vista**/Deja todos tus electrónicos en la cajuela de tu vehículo.

## Si ves algo sospechoso :

- Notifica a la policía o seguridad. **Llama al numero de no emergencia de SAPD al 210-207-7273.**
- Si es una emergencia, **marca 911.**





# Partnership with Local Media

- To provide essential holiday safety tips:
  - How to prevent car burglaries
  - Protecting yourself during online shopping
  - Safeguarding credit card information
  - Increase awareness about fraudulent organizations that often scam individuals during the holiday season



# Holiday Crime Reduction Task Force

- Multiple SAPD units focus on proactively reducing criminal activity by identifying and apprehending known criminals who engage in vehicle burglaries, retail thefts, and other property crimes during the holiday shopping season







# Fire Department Safety Tips

- Public education campaign:
  - Christmas tree & decoration fires
  - Holiday cooking safety tips
  - Staying warm safely during the holidays



# Multi Channel Messaging

- TV Interviews
- Social Media Posts



- FireSafeSA.com English and Spanish
- Messaging will change per holiday and weather conditions





# Online Messaging

- A special landing page will be live on [firesafesa.com](https://firesafesa.com)
- Featuring SAFD cartoon 'Holiday Spark'
- Messaging will continue rotating to reflect holiday and weather conditions
- Safety flyers can be viewed and printed in English & Spanish



## Holiday Safety 2024



As you decorate your house for the holidays, make it a safe place for Santa to recharge. Remember that overloaded electrical outlets are a leading cause of fire in the home. Help Santa get home safe this Christmas and deck your halls responsibly!

*Mientras decoras tu casa para las fiestas, haz que sea un lugar seguro para que Papá Noel se recargue. Recuerda que las tomas de corriente sobrecargadas son una de las principales causas de incendio en el hogar. Ayude a Papá Noel a llegar seguro a casa estas Navidades y decore sus salones de forma responsable.*

# Messaging



Home Events SAFD Public Services Safety Videos Seguridad More



## consejos de seguridad contra incendios

- Instale detectores de humo en todos los niveles de su hogar, dentro de los dormitorios y fuera de las áreas para dormir.
- Pruebe las alarmas de humo todos los meses. Si no funcionan, cambie las pilas.
- Hable con todos los miembros de la familia sobre un plan de escape en caso de incendio y practíquelo dos veces al año.
- Si ocurre un incendio en su casa, SALGA, MANTÉNGASE FUERA y PIDA AYUDA. Nunca vuelvas adentro por nada ni por nadie.

imprima nuestros folletos de seguridad contra incendios  
haciendo clic a continuación



## Seguridad del árbol de Navidad



En estas fiestas, sea consciente de los posibles incendios al decorar las salas. Una pequeña llama que llegue a un árbol de Navidad puede crecer muy rápido.

### ELEGIR EL ÁRBOL

- Elija un árbol con agujas de pino verdes y frescas que no se desprendan con el contacto.

### COLOCAR EL ÁRBOL

- Antes de colocar el árbol en la plataforma, corte 2" de la base del tronco.
- Asegúrese de que el árbol esté alejado, al menos tres pies (un metro), de cualquier fuente de calor, como chimeneas, calefactores, velas, conductos de calefacción o lámparas.
- Asegúrese de que el árbol no obstruya una salida.
- Agregue agua a la base del árbol. Asegúrese de agregar agua a diario.

### ENCENDER EL ÁRBOL

- Use luces avaladas por un laboratorio calificado. Algunas luces son solo para interiores y otras solo para exteriores.
- Reemplace las guirnaldas luminosas que tengan cables deteriorados o rotos, o conexiones flojas en las bombillas. Lea las instrucciones del fabricante para saber el número de guirnaldas a colocar.
- Nunca use velas encendidas para decorar el árbol.
- Siempre apague las luces del árbol de Navidad antes de salir o al irse a dormir.

### Después de Navidad

Después del árbol después de Navidad o cuando este se seque. Los árboles secos representan un peligro de incendio y no se deben dejar en el hogar o en el garaje, o afuera junto a la casa. Consulte con su comunidad local para buscar un programa de reciclaje. Entre al hogar las luces eléctricas exteriores después de las fiestas para prevenir riesgos y darles más vida útil.

### DATOS

- Uno de cada cuatro incendios de árboles navideños en el hogar son provocados por problemas eléctricos.
- Aunque los incendios de árboles navideños no son comunes, cuando suceden, lo más probable es que sean graves.
- Una fuente de calor muy cerca del árbol provoca alrededor de uno de cada cuatro incendios.



Su fuente de información de SEGURIDAD  
División de Educación Pública (Public Education Division) de NIFA, 11 Battery March Park, Quincy, MA 02269

## Christmas Tree Safety



As you deck the halls this holiday season, be fire smart. A small fire that spreads to a Christmas tree can grow large very quickly.

### PICKING THE TREE

- Choose a tree with fresh, green needles that do not fall off when touched.

### PLACING THE TREE

- Before placing the tree in the stand, cut 2" from the base of the trunk.
- Make sure the tree is at least three feet away from any heat source, like fireplaces, radiators, candles, heat vents or lights.
- Make sure the tree is not blocking an exit.
- Add water to the tree stand. Be sure to add water daily.

### LIGHTING THE TREE

- Use lights that are listed by a qualified testing laboratory. Some lights are only for indoor or outdoor use.
- Replace any string of lights with worn or broken cords or loose bulb connections. Read manufacturer's instructions for number of light strands to connect.
- Never use lit candles to decorate the tree.
- Always turn off Christmas tree lights before leaving home or going to bed.

### After Christmas

Get rid of the tree after Christmas or when it is dry. Dried-out trees are a fire danger and should not be left in the home or garage, or placed outside against the home. Check with your local community to find a recycling program. Bring outdoor electrical lights inside after the holidays to prevent hazards and make them last longer.

### FACTS

- Almost one third of home Christmas tree fires are caused by electrical problems.
- Although Christmas tree fires are not common, when they do occur, they are more likely to be serious.
- A heat source too close to the tree causes more than one in every five of the fires.



Your Source for SAFETY Information  
NIFA Public Education Division 11 Battery March Park, Quincy, MA 02269

Your Logo

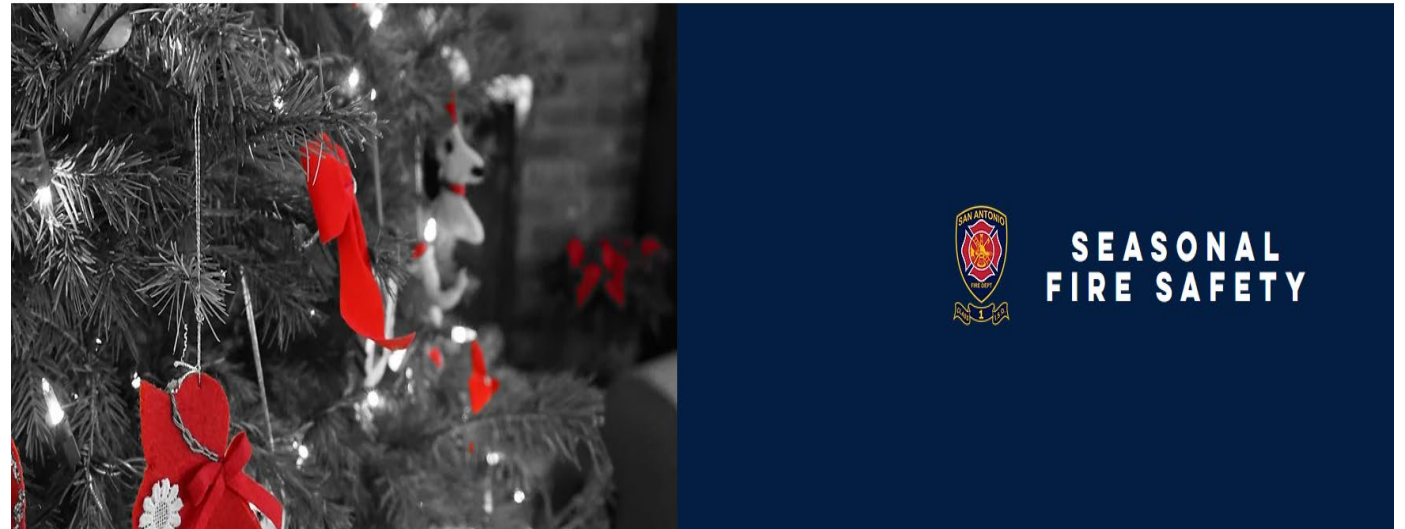


# Messaging

- **FireSafeSA** features a section available year-round for seasonal safety, along with a Spanish only section
- Tips include cooking, decorations, heating and safety plans



[Home](#) [Events](#) [SAFD Public Services](#) [Safety Videos](#) [Seguridad](#) [More](#)



**Winter**

**Spring**

**Summer**

# Messaging

## Put a FREEZE on Winter Fires

Home fires occur more in winter than in any other season. As you stay cozy and warm this winter, be fire smart!

<b>DEC JAN FEB</b> Half of all home heating fires occur in December, January and February.	<b>1 in every 7 home fires and 1 in every 3 home fire deaths involves heating equipment.</b>	<b>Keep anything that can burn at least 3 feet from any heat source (the fireplace, wood stove, radiator or space heater).</b>
<b>Keep portable generators outside, away from windows, and as far away from your home as possible.</b>	<b>Plug only 1 heat-producing appliance (like a space heater) into an electrical outlet at a time.</b>	<b>Plug only 1 heat-producing appliance (like a space heater) into an electrical outlet at a time.</b>
<b>Have a qualified professional clean and inspect your chimney and vents every year.</b>	<b>Store cooled ashes in a tightly covered metal container and keep it outside at least 10 feet from your home and any nearby buildings.</b>	

## Winter Holiday Safety

Winter holidays are a time for families and friends to get together. But that also means a greater risk for fire. Following a few simple tips will ensure a happy and fire-safe holiday season.

### HOLIDAY DECORATING

- Be careful with holiday decorations. Choose decorations that are flame resistant or flame retardant.
- Keep lit candles away from decorations and other things that can burn.
- Some lights are only for indoor or outdoor use, but not both.
- Replace any string of lights with worn or broken cords or loose bulb connections. Read manufacturer's instructions for number of light strands to connect.
- Use clips, not nails, to hang lights so the cords do not get damaged.
- Keep decorations away from windows and doors.

### HOLIDAY ENTERTAINING

- Test your smoke alarms and tell guests about your home fire escape plan.
- Keep children and pets away from lit candles.
- Keep matches and lighters up high in a locked cabinet.
- Stay in the kitchen when cooking on the stove top.
- Ask smokers to smoke outside. Remind smokers to keep their smoking materials with them so young children do not touch them.
- Provide large, deep ashtrays for smokers. Wet cigarette butts with water before discarding.

### Before Heading Out to Bed

Blow out all candles when you leave the room or go to bed. Turn off all light strings and decorations before leaving home or going to bed.

### FACTS

- More than one-third of home decoration fires are started by candles.
- More than two-thirds of every fire decoration fire begins because decorations are placed too close to a heat source.

## Electric Portable Space Heater Safety

When the weather turns cold, it can bring a chill into our homes. Portable space heaters have become a popular way to supplement central heating or heat one room. If you plan to use portable electric space heaters, make sure to follow these tips and recommendations:

### HEATER CHECKLIST

- Purchase a heater with the seal of a qualified testing laboratory.
- Keep the heater at least 3 feet (1 metre) away from anything that can burn, including people.
- Choose a heater with a thermostat and overheat protection.
- Place the heater on a solid, flat surface.
- Make sure your heater has an auto shut-off to turn the heater off if it tips over.
- Keep space heaters out of the way of foot traffic. Never block an exit.
- Keep children away from the space heater.
- Plug the heater directly into the wall outlet. Never use an extension cord.
- Space heaters should be turned off and unplugged when you leave the room or go to bed.

### Types of electric space heaters

**Oil or water-filled radiator:** Heated oil or water transfer heat through the heater.

**Fan forced heater:** A fan blows warm air over heated coils.

**Ceramic heater:** Air is warmed over a ceramic heating element.

**Infrared heaters:** Heat is created by infrared bulbs.

### Fact

Two in five deaths in space heater fires involve portable electric space heaters.

## Heating Safety

There is something about the winter months and curling up with a good book by the fireplace. But did you know that heating equipment is one of the leading causes of home fire deaths? With a few simple safety tips and precautions you can prevent most heating fires from happening.

### BE WARM AND SAFE THIS WINTER!

- Keep anything that can burn at least three feet (one metre) away from heating equipment, like the furnace, fireplace, wood stove, or portable space heater.
- Have a three-foot (one metre) "kid-free zone" around open fires and space heaters.
- Never use your oven to heat your home.
- Have a qualified professional install stationary space heating equipment, water heaters or central heating equipment according to the local codes and manufacturer's instructions.
- Have heating equipment and chimneys cleaned and inspected every year by a qualified professional.
- Remember to turn portable heaters off when leaving the room or going to bed.
- Always use the right kind of fuel, specified by the manufacturer, for fuel burning space heaters.
- Make sure the fireplace has a sturdy screen to stop sparks from flying into the room. Ashes should be cooled before putting them in a metal container. Keep the container a safe distance away from your home.
- Test smoke alarms at least once a month.

### Heating Equipment Smarts

Install! Most heating stove manufacturers or home professionals do the installation. All fuel-burning equipment should be tested by the retailer to avoid carbon monoxide (CO) poisoning.

Install! and maintain! CO detectors to avoid the risk of CO poisoning. If you smell gas in your gas heater, do not light the appliance. Leave the house immediately and call your local fire department or gas company.

### FACT

Half of home heating fires are reported during the months of December, January, and February.

## Thanksgiving Safety

The kitchen is the heart of the home, especially at Thanksgiving. Kids love to be involved in holiday preparations. Safety in the kitchen is important, especially on Thanksgiving Day when there is a lot of activity and people at home.

- Stay in the kitchen when you are cooking on the stovetop so you can keep an eye on the food.
- Stay in the home when cooking your turkey and check on it frequently.
- Keep children away from the stove. The stove will be hot and kids should stay 3 feet away.
- Make sure kids stay away from hot food and liquids. The steam or splash from vegetables, gravy or coffee could cause serious burns.
- Keep the floor clear so you don't trip over kids, toys, pocketbooks or bags.
- Keep knives out of the reach of children.
- Be sure electric cords from an electric knife, coffee maker, plate warmer or mixer are not dangling off the counter within easy reach of a child.
- Keep matches and utility lighters out of the reach of children — up high in a locked cabinet.
- Never leave children alone in room with a lit candle.
- Make sure your smoke alarms are working. Test them by pushing the test button.

### Did you know?

Thanksgiving is the leading day of the year for home fires involving cooking equipment.

It's Thanksgiving! Keep kids out of the kitchen during the busy time. Gravy, grease or food can keep them busy. Kids can get involved in Thanksgiving preparations with recipes that can be done outside the kitchen.

Have activities that keep kids out of the kitchen during the busy time. Gravy, grease or food can keep them busy. Kids can get involved in Thanksgiving preparations with recipes that can be done outside the kitchen.

NATIONAL FIRE PROTECTION ASSOCIATION  
The leading authority on fire prevention and fire safety

your logo

## Turkey Fryer Fire Safety

Frying food puts you at the greatest risk of cooking fires. Before you fry a turkey, review these tips to keep you and your loved ones safe.

- Turkey fryers can tip over easily, spilling hot cooking oil over a large area. Make sure your turkey fryer is on a sturdy, level surface and do not move it once it is in use.
- Make sure it is at least 10 feet from your home and not under roof eaves.
- An overfilled cooking pot will cause cooking oil to spill when the turkey is put in. Test the amount of oil you need by filling your fryer with water. Place the turkey in the pot making sure the water doesn't get too close to the top. Measure the water and use that as a guide for filling the pot with oil.
- A partially frozen turkey will cause cooking oil to splatter when you put it in the cooking pot. Make sure your turkey is fully thawed without frost on it before you fry it.
- Without thermostat controls, deep fryers can overheat oil to the point of starting a fire. If your turkey fryer does not have a thermostat, use a kitchen thermometer that attaches to the side of the pot. This will help you monitor the temperature of the oil.
- The sides of the cooking pot, lid and pot handles can get dangerously hot. Always use protective oven mitts. Keep children and pets at least 3 feet from the turkey fryer.
- Consider using an electric or air fryer.



# Videos

# FireSafe SA





safe home. safe work. safe school.™



# Cold Weather Guides and Door Hangers



 CITY OF  
**SAN ANTONIO**  
— TEXAS —

 **Winter Weather**

## Preparedness Guide

Office of Emergency Management



 CITY OF  
**SAN ANTONIO**  
— TEXAS —

**This winter, prepare  
for the  
unexpected**

No matter the type of emergency or disaster, an emergency kit will help your family stay safe if you must shelter in place or evacuate.

### Make a Kit Checklist

<input type="checkbox"/> Water & Non-perishable food for several days	<input type="checkbox"/> Manual Can Opener (if kit contains canned food)
<input type="checkbox"/> Flashlight & extra batteries	<input type="checkbox"/> Battery-powered or hand crank radio
<input type="checkbox"/> Extra batteries & portable charger	<input type="checkbox"/> First Aid Kit
<input type="checkbox"/> Wrench or pliers to turn off utilities	<input type="checkbox"/> Prescription Medications & Eyeglasses


**Additional items to consider for your kit:**


<input type="checkbox"/> Important family documents in a portable waterproof container and/or USB flash drive	<input type="checkbox"/> Paper and pencil
<input type="checkbox"/> Cash	<input type="checkbox"/> Infant formula & diapers
<input type="checkbox"/> Personal hygiene items and hand sanitizer	<input type="checkbox"/> Pet food, water & supplies for your pet
<input type="checkbox"/> Masks (for everyone ages 2 and above)	<input type="checkbox"/> Complete change of clothing including a long-sleeved shirt, long pants and sturdy shoes
<input type="checkbox"/> Books, games, puzzles or other activities	

**Don't forget to plan for:**

☐ Kids   ☐ Elderly   ☐ Pets   ☐ Specialized Medical Equipment

For more winter weather preparedness information visit: [www.saoemprepares.com](http://www.saoemprepares.com)







# Community Outreach

## People



Keep warm and dress in layers. Check on your elderly family or neighbors

## Pets



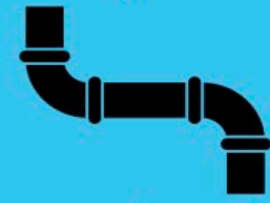
Bring pets inside to keep them safe and healthy

## Plants



Bring potted plants inside. For outdoor plants, water and cover them with a cloth fabric.

## Pipes



Cover pipes and allow outdoor faucets to slowly drip to prevent them from freezing.

# Coordinated Winter Weather Response Plan and Tips

Published on January 11, 2024



**City of San Antonio, Bexar County, CPS Energy, SAWS and VIA share coordinated winter weather response plan and tips**

**SAN ANTONIO (January 11, 2024)** – The National Weather Service (NWS) is forecasting the coldest air of the Winter season to arrive in San Antonio and the surrounding area this weekend. Tonight's cold front is expected to bring extremely high winds to the city. Wind

## Media Contact

### City of San Antonio

Luke Simons

[210-207-6925](tel:210-207-6925)

[Email Media Contact](#)

### Bexar County

Monica Treviño Ortega

[210-517-8996](tel:210-517-8996)

[monica.trevinoortega@bexar.org](mailto:monica.trevinoortega@bexar.org)

### SAWS

Anne Kenny Hayden

[210-823-0194](tel:210-823-0194)

[Anne.Hayden@saws.org](mailto:Anne.Hayden@saws.org)

### CPS Energy

Dana Sotoodeh





# Cold & Extreme Weather Preparedness

## LEVEL 1

## LEVEL 2

## LEVEL 3

Type	<b>DAYTIME WARMING CENTERS</b> Open during business hours for shelter, bathroom & charging stations	<b>CITY RESILIENCE HUBS</b> Open for overnight shelter based on need	<b>MASS SHELTER</b> Open for emergency sheltering situations
Activation	<ul style="list-style-type: none"><li>• 32°F and dry conditions</li><li>• 35°F with precipitation</li><li>• 35°F with windchill of 32°F or below</li></ul>	<ul style="list-style-type: none"><li>• Hazardous weather conditions: snow, sleet, ice, dangerous wind chill</li><li>• Prolonged electric outages lasting more than 24 hours.</li></ul>	<ul style="list-style-type: none"><li>• Emergency situations: hurricane, tornado, storm, flood, fire, explosion, or natural or human-made catastrophe</li></ul>
Locations/ Partners	Libraries, Senior and Community Centers during operating hours	Locations are available and opened as needed. Check SAOEM for a complete list.	Alamodome, Convention Center

# HOMELESS SHELTERING

## LEVEL 1

## LEVEL 2

## LEVEL 3

 <b>Activation</b>	<b>OPEN EVERY NIGHT</b> December 1 - March 1	<b>&lt;32°F OR &lt;35°F</b> with precipitation or freezing windchill	
 <b>Bed Totals</b>	<b>628*</b>	<b>335</b>	<b>120+**</b>
 <b>Operating Partners</b>	Haven for Hope	Corazon San Antonio, Communities Under the Bridge (CUB), SAMMinistries	Community church partners



**Homeless  
Outreach and  
Transportation**

**210-207-1799**

On Level 2 activation, the City's Community Connections Hotline and street outreach teams will extend service hours, up to 24 hours, to transport unsheltered clients to shelter beds.

\*Year-round capacity. Enrollment may be limited to give priority to certain populations (e.g. older adults, people with disabilities) \*\*Subject to availability

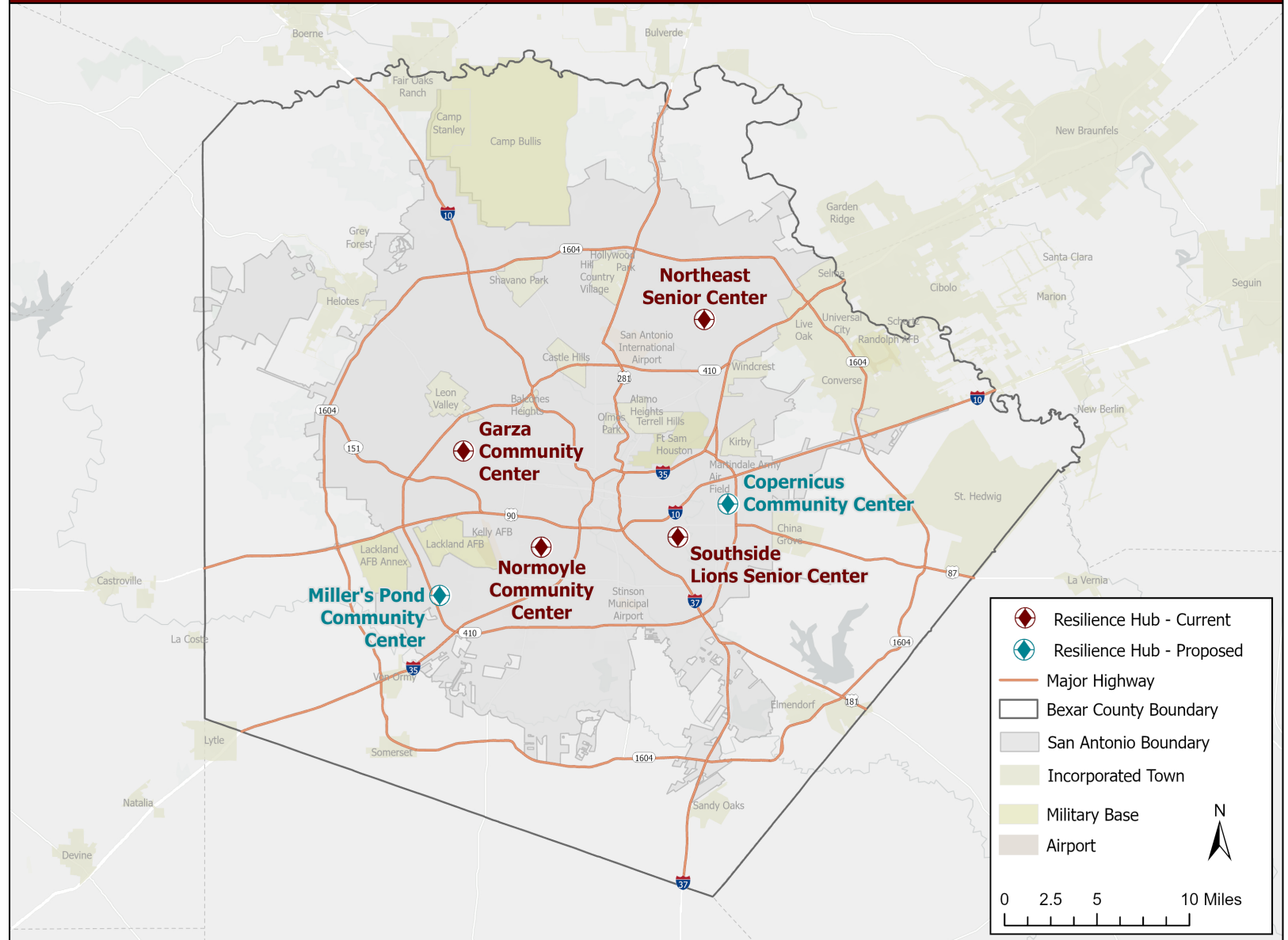
For more details, call 3-1-1 or visit [SAOEMPrepare.com](https://SAOEMPrepare.com)





# Places to Stay Warm/ Sheltering

## San Antonio Resilience Hubs



# Cooperation With Outside Agencies

- CPS and SAWS
- Bexar County
- TxDOT
- VIA
- San Antonio Food Bank
- Non-Profit Organizations
- Faith-Based Organizations
- Region 20
- Volunteer Organizations
- EMCIS Network





# Situational Awareness



- Coordinated updates provided to City Manager's Office
- City Manager's Office provides daily updates to Mayor and City Council during an inclement weather event
- City's Communications Team provides coordinated daily updates to the media



# Winter Weather Updates

Published on February 01, 2023

## Updates to the Public and Media



**City of San Antonio, Bexar County, CPS Energy, SAWS and VIA Share Coordinated Winter Weather Updates**

**NOTE:** Information current as of 8:30 p.m.

**SAN ANTONIO (February 1, 2023)** – The City of San Antonio area remains under a Winter Storm Warning. The National Weather Service has forecasted freezing rain will remain in areas just east and along the I-35 corridor throughout Wednesday night and into

## Media Contact

Laura Mayes

City of San Antonio

[210-207-1337](tel:210-207-1337)

[Email Media Contact](#)

Michelle Vigil

City of San Antonio

[210-207-4494](tel:210-207-4494)

[Email Media Contact](#)

Tom Peine

Bexar County

[210-335-0073](tel:210-335-0073)

[Email Media Contact](#)

Anne Kenny Hayden

SAWS





**Be Safe & Have Fun**