



Investing in Community Health
City of San Antonio Metropolitan Health District
University Health
Center for Health Equity in South Texas

Presented by: Claude A. Jacob, DrPH, MPH
Edward Banos, MHSA & Lyssa Ochoa, MD

February 28, 2025

Overview



- Council Consideration Request: Public Health and Healthcare Commission
- University Health Investments in Community Health
- City of San Antonio Investments in Center for Health Equity in South Texas (CHEST)
- Next Steps / Recommendation

CCR Goals and Recommended Appointees



Council Consideration Request:

Public Health and Healthcare Commission

Overarching Goals

- Advise Metro Health and other City of San Antonio departments
- Promote consensus-driven, data-informed, and interdisciplinary strategy to address health challenges in our community
- Ensure strong core infrastructure to protect health and provide fair opportunities for all

Recommended Appointees

- COSA Staff Liaison - Metro Health Director
- Healthcare providers, academics, advocates, researchers, mental health experts, Bexar County Medical Society, City Council representative

Public Health and Healthcare Commission

Key Tasks



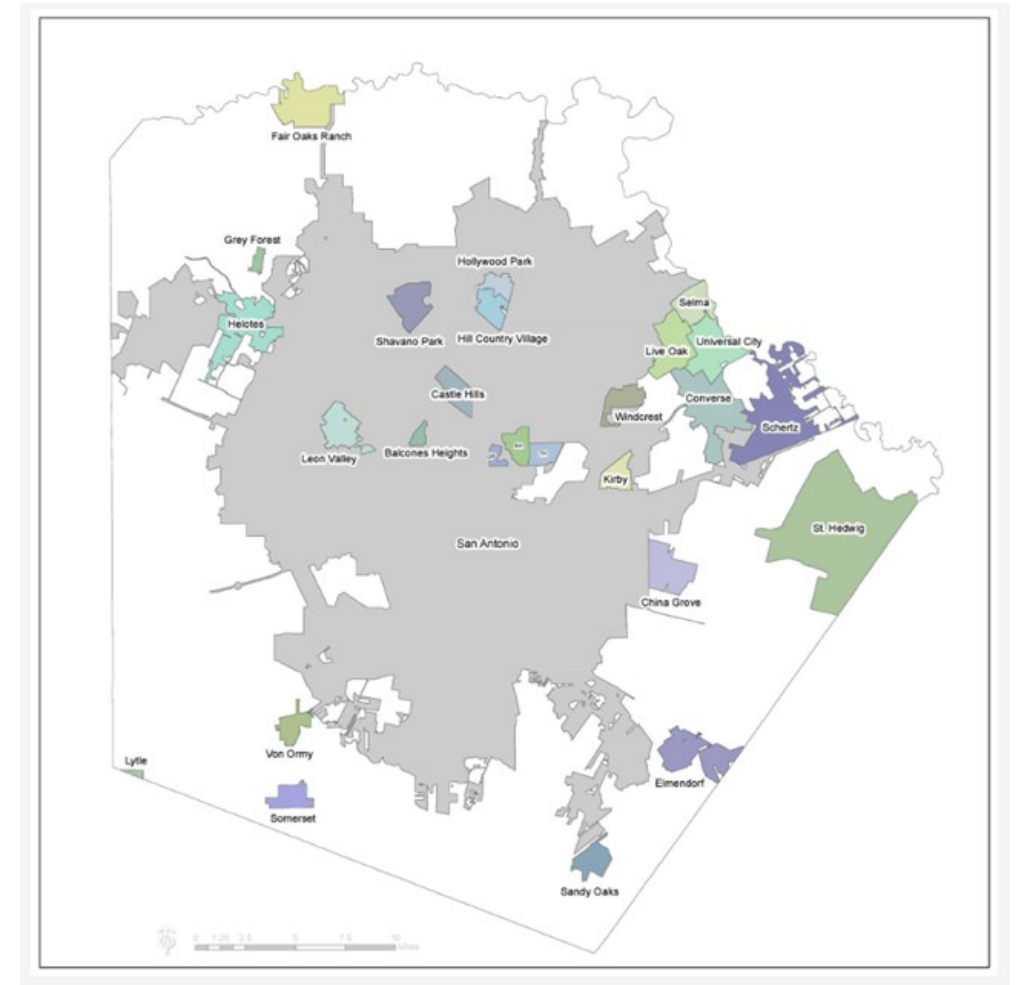
- Develop a comprehensive public health and healthcare strategy
- Advise Metro Health, city departments/agencies, and community organizations on improving health-related goals, services and outcomes
- Advocate for policy improvements to better serve our most vulnerable populations
- Prioritize health literacy
- Support comprehensive strategy for developing a medical center on the Southside



COSA Investments in CHEST



- Metro Health is contributing a total of \$600,000 of seed funding for FY25 and FY26 to help establish the Center for Health Equity in South Texas (CHEST)
- Supports the efforts of Methodist Healthcare Ministries, UT School of Public Health San Antonio, Bexar County Health Department, and University Health's Institute for Public Health



Community Health Committee



Community Health Committee will oversee policies, plans and programs that affect the quality of life of our residents. This includes the protection and enhancement of:

- Natural Environment
- **Public Health**
- **Human Services**
- Climate Preparedness
- Solid Waste
- Libraries
- Parks

Additionally, the committee will oversee activities related to the stewardship of San Antonio's unique artistic, cultural, and historic heritage.

Health and Healthcare Challenges



- Generational Poverty
- Lack of Access to Care
- Food Insecurity
- Entrenched Health Inequities



Our Strategic Response - *SA Forward*



- COVID-19 pandemic revealed truths about social inequality and racial injustice that necessitated a bold public health response.
- In 2021, we answered this call by launching an enhanced five-year community blueprint called *SA Forward*.
- *SA Forward* widens the scope of Metro Health's strategic focus to address lessons learned from the pandemic in the domains of:
 - ✓ Mental and Behavioral Health
 - ✓ Domestic Violence
 - ✓ Inadequate Food Systems
 - ✓ Social, Economic, & Racial Disparities in Health
 - ✓ Public Health Surveillance and Informatics



SA Forward 



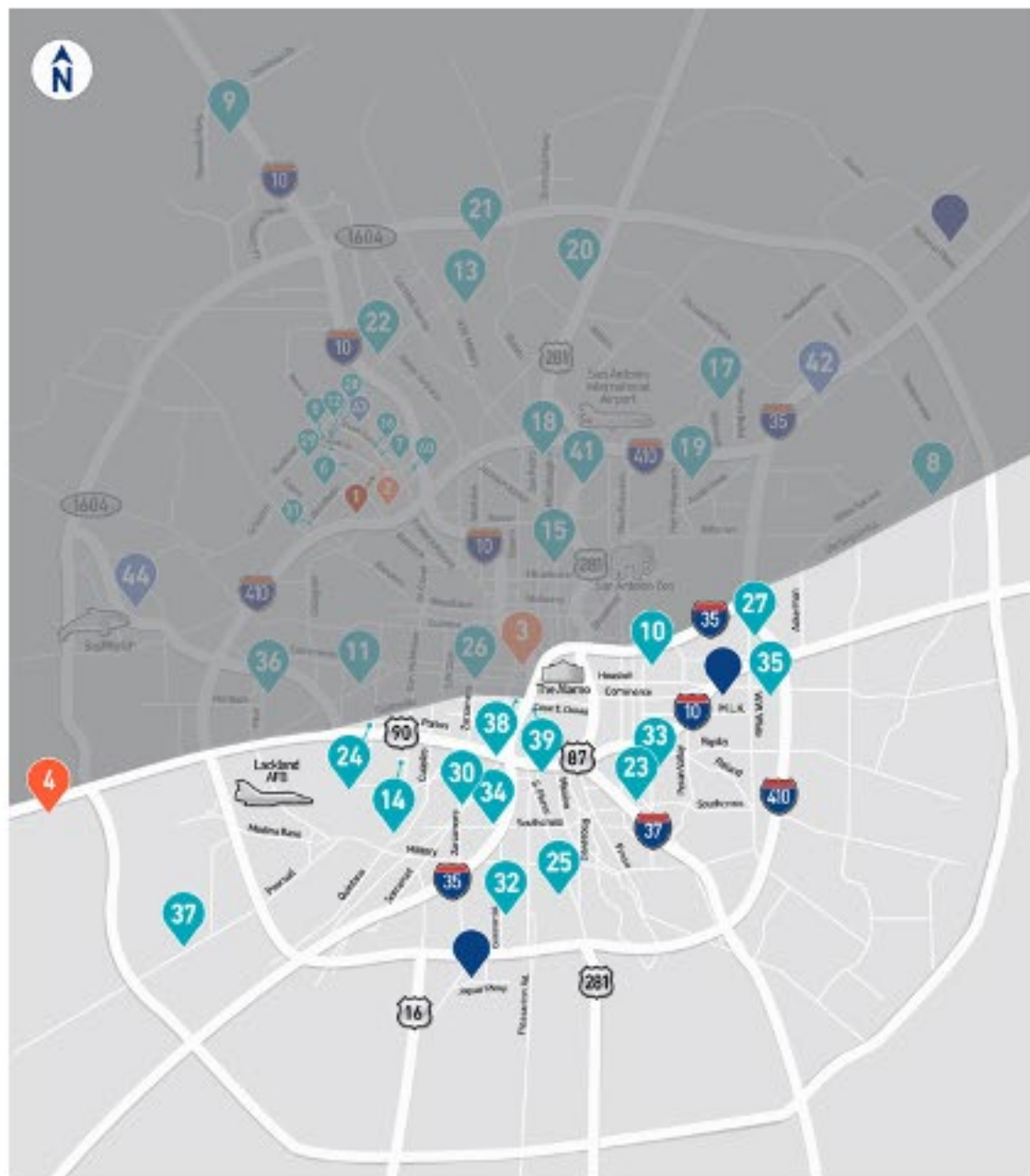
**Thinking
beyond**

University Health

*Leading the way to be one of the nation's
most trusted health institutions*

Edward Banos, President and CEO

Expanding access across the community



Historic Growth on the South Side

University Health Palo Alto Hospital & Medical Office Building

Jaguar Parkway & S. Zarzamora – Across from Texas A&M San Antonio

Planned opening: early 2027

Five stories, 500,000 square feet

- 24/7 ER
- Surgical Services, with advanced Hybrid OR
- Labor & Delivery Unit
- Neonatal Intensive Care Unit (NICU)
- Acute & Intensive Care Units
- Advanced Radiology
- Laboratory
- Pharmacy
- Attached Medical Office Building – doctors' offices

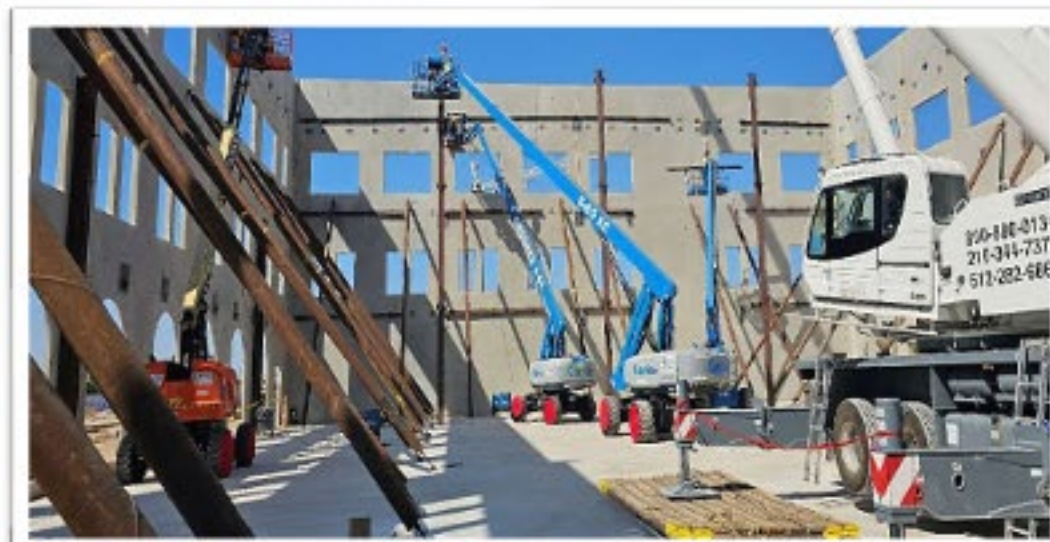


University Health Vida



Multi-specialty Clinic
three-story, 60,000-square-foot building
Next to Palo Alto Hospital, across from Texas A & M
Opening late 2025

University Health Vida – taking shape today



- Primary care & specialty care
- ExpressMed walk-in clinic
- Laboratory & X-ray
- Pharmacy
- Mental health services
- University Health Institute for Public Health
 - Community spaces, Health education, Community Commons for nonprofit collaboration

Historic Growth on the East Side



University Health Wheatley Multi-specialty Clinic

I-10 East near Houston Street
One-story, 15,000 square feet
Opening late 2025

University Health Wheatley – taking shape today



- Primary care & specialty care
- ExpressMed walk-in clinic
- Laboratory & X-ray
- Pharmacy
- Community education and other activities related to the University Health Institute for Public Health

Center for Health Equity in South Texas



Our overarching goal of **CHEST** is to facilitate **collaborative critical thinking** that leads to **more effective** use of **existing resources** and development of **cutting-edge strategies** and **new resources** that will leapfrog us to **healthy environments** that are embraced with the **full support and participation** of their respective **communities!**

CHEST Initiative



Mission:

CHEST is dedicated to advancing the health outcomes of underserved, under-resourced residents of the greater South San Antonio area, including the Near Eastside and Near Westside communities, through increased education, access, investment, and cross-sector collaboration.

Vision:

A comprehensive and innovative ecosystem for health that secures the financial and intellectual investments to successfully close life expectancy gaps between communities and achieve health equity across South Texas.

Four Guiding Principles:

- Addressing Health Inequities
- Innovative Solutions
- Emerging Technologies
- Community Collaboration

CHEST: Work Groups



Education & Workforce

Middle School to High School career exposure and pathways

Community college collaborations for entry level healthcare-related jobs

Direct access to university and post-grad opportunities

Educating a culturally competent workforce, including soft skills

Healthcare

Incentivizing more physicians and ancillary care to serve areas of highest need

Increasing immediate access to care by strategizing time share options and mobile clinics

Building capacity to attract additional acute care medical and mental health beds

Life Expectancy

Addressing food insecurity and healthy eating

Improving green spaces and tree coverage

Optimizing transportation options/routes

Affordable housing incorporating resources for a healthy life

CHEST - Committed Board of Directors*



Name	Representation	Name	Representation
Rudy Aguilar	D3 Community Rep	Sandra Martinez	MHM
Ed Banos	University Health	Dr. Hector Ochoa	TAMUSA
Dr. Lynne Cossman	UTSA HCAP	Dr. Lyssa Ochoa	The SAVE Clinic
Louis Escareno	Attorney	Mario Obledo	Food Bank
CW Adriana Rocha Garcia	District 4	Javier Paredes	Architect
Jordan Ghawi	STRAC	Dr. John Pham	UIW
Henry B. Gonzalez III	Attorney	Dr. Vasan Ramachandran	UT School of PH SA
Dr. Andrea Guajardo	Bexar County PH	Judith Rendon	D4 Community Rep
Lawrence Harkless	Podiatrist	Gerardo Soto	Harlandale ISD
George Hernandez	Attorney	Dr. Roberto Trevino	SAHRC
Dr. Claude A. Jacob	COSA/SAMHD	CW Phyllis Viagran	District 3
Michelle Lugalía-Hollon	Alamo Colleges	Rebecca Viagran	SoTX

**Participation confirmed, pending execution of COSA Funding Agreement and formal appointment*

CHEST - Current Initiatives



Asset Map

Data Aggregation

- Identify all community stakeholders/programs categorized by Work Group focus area
- Initial work targeting health career pathways across ISDs underway

Medical Students

Clinical and Cultural Competency

- Expanding opportunities for UTHHealth and UIWSOM medical students to build trust in the communities and practice medical Spanish

High School Apprentices

Workforce Development

- Medical Assistant and Medical Receptionist Pre-Apprenticeships to prepare Seniors for entry-level careers

TIRZ

Responsible Development

- Preliminary analyses underway for potential "CHEST Corridor" TIRZ to enhance development opportunities

Staffing

Organizational Startup

- Retained Project Manager and pending offer to Grant Writer, both in part-time 1099 arrangements

CHEST - Next Steps



- Finalize/Execute City Seed Funding
- Organize Board Retreat
- Apply for Non-COSA Grants and Funding
- Initiate Community Listening Sessions
- Identify Key Work Group Initiatives
- Continue Recruiting Key Community Collaborators

Staff Recommendation



Staff recommends providing regular updates to the Community Health Committee that address the tasks outlined in the Council Consideration Request

Questions?



Website: sa.gov/health
Email: claud.jacob@sanantonio.gov