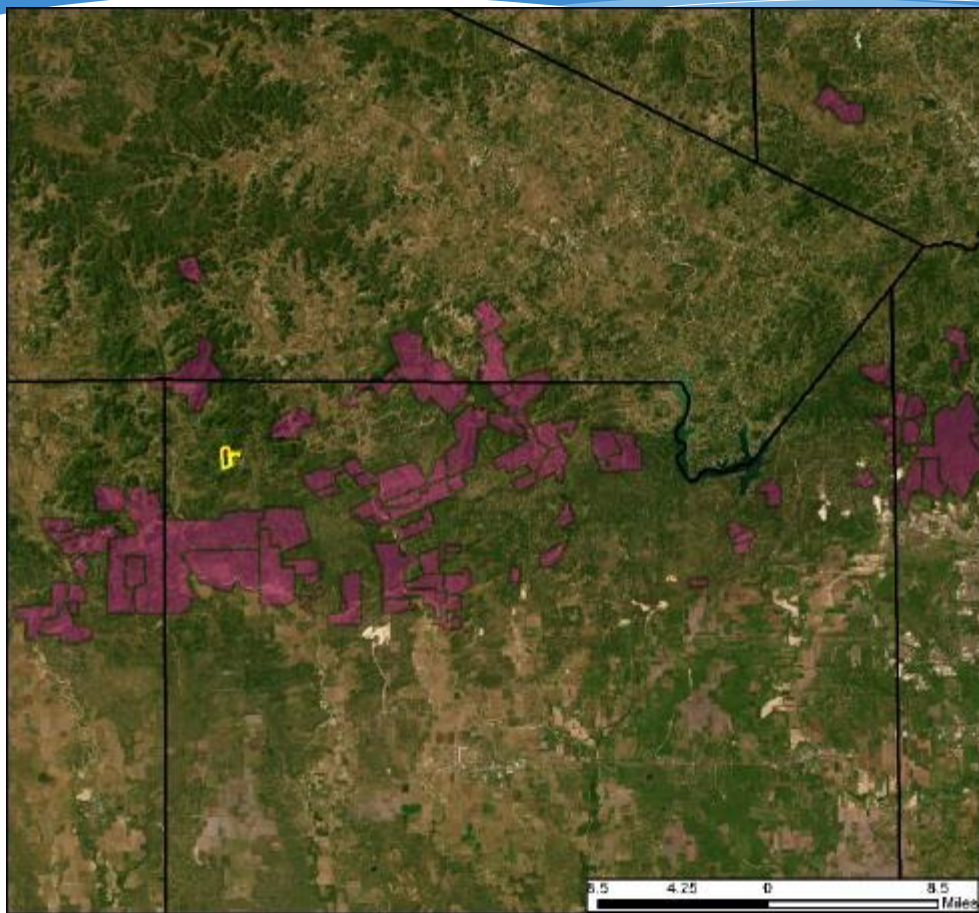




GREEN
SPACES
ALLIANCE
OF SOUTH TEXAS

Bryant Ranch
Rocamontes Property

Bryant Ranch (271 acres) Medina County





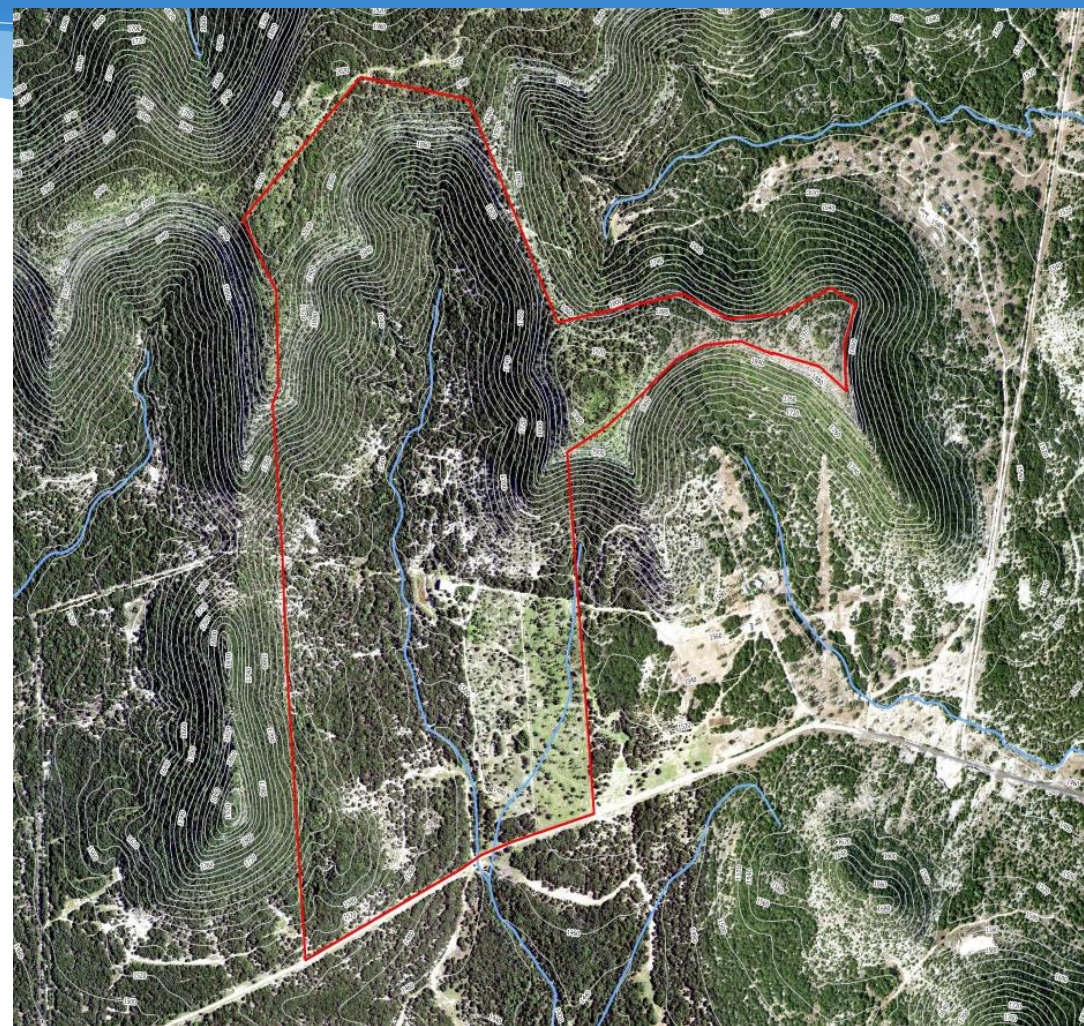
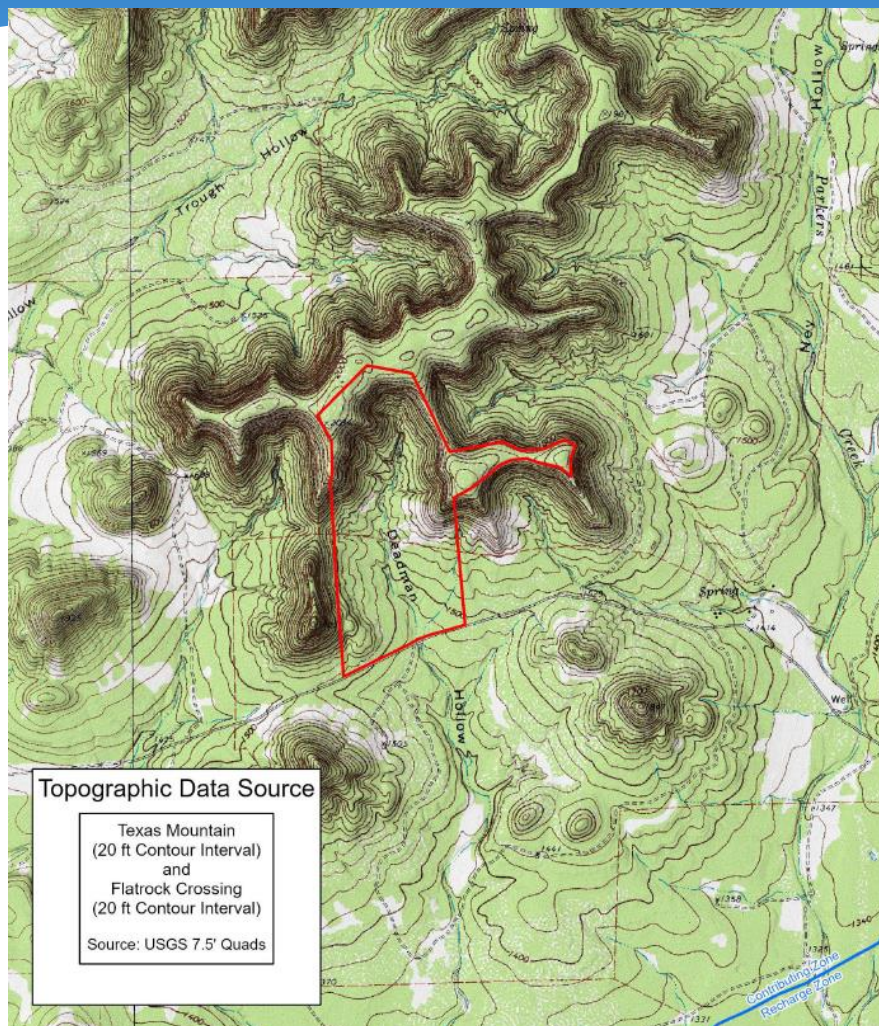
Bryant Ranch (271 acres) Medina County

- ~100% EACZ
- 70% SET Model
- Located North of the Domino Ranch (2 miles), South of the Mazurek Ranch (3 miles) and West of Providence Springs Ranch (2 miles)
- EAA geological assessment reports high water quality and quantity benefits
- Appraisal completed



- Requesting Final Approval

Bryant Ranch (271 acres) Medina County

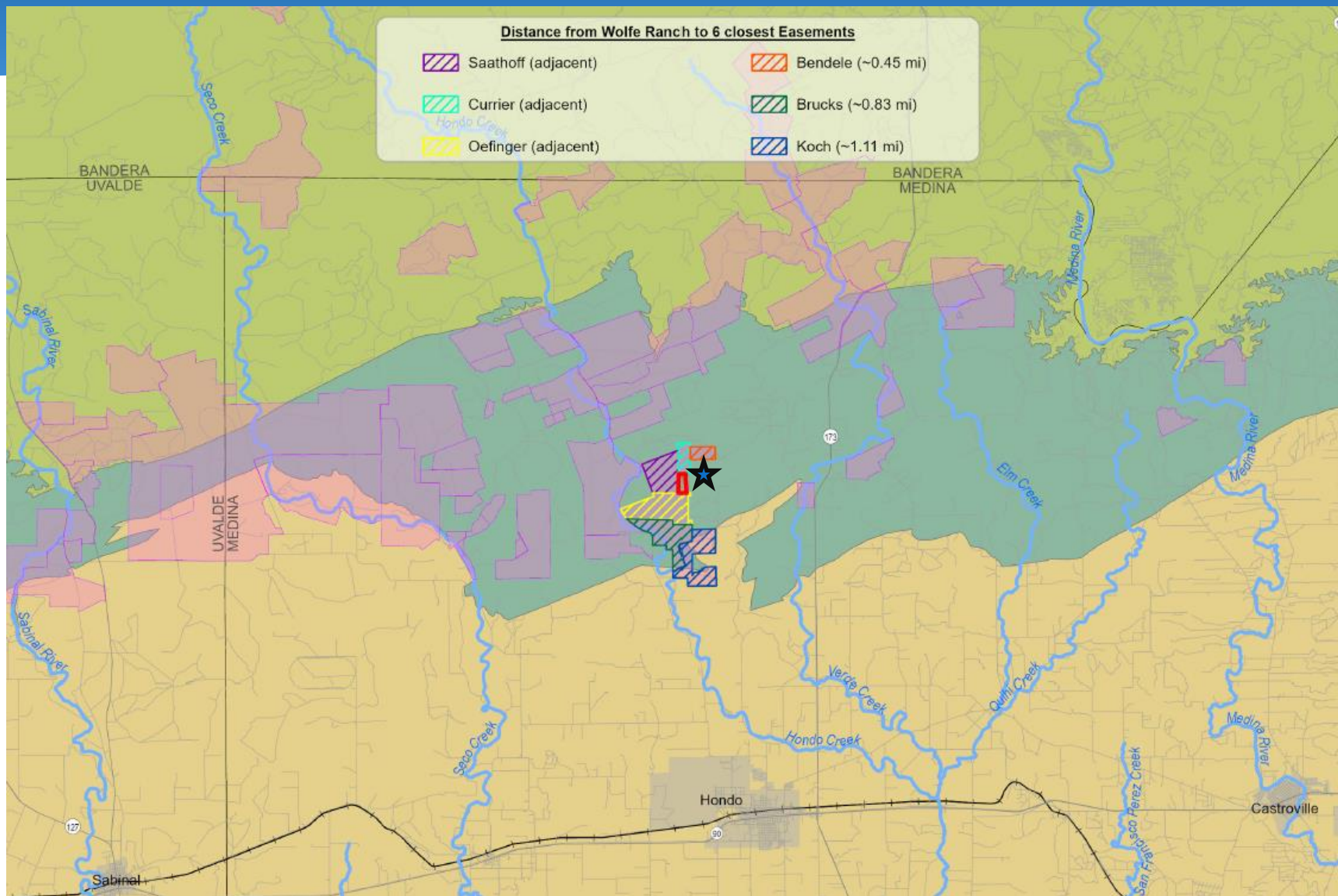




Bryant Ranch (271 acres) Medina County



Rocamontes Property (50 acres) Medina County





Rocamontes Property (50 acres) Medina County

- ~100% EACZ
- Top 10% SET Model
- Located adjacent to Wolfe Ranch (currently under evaluation), Currier Ranch and Oefinger Ranch
- Remaining due diligence for Rocamontes and Wolfe properties could be performed simultaneously to reduce expenses
- Requesting Stage 1 Approval

