



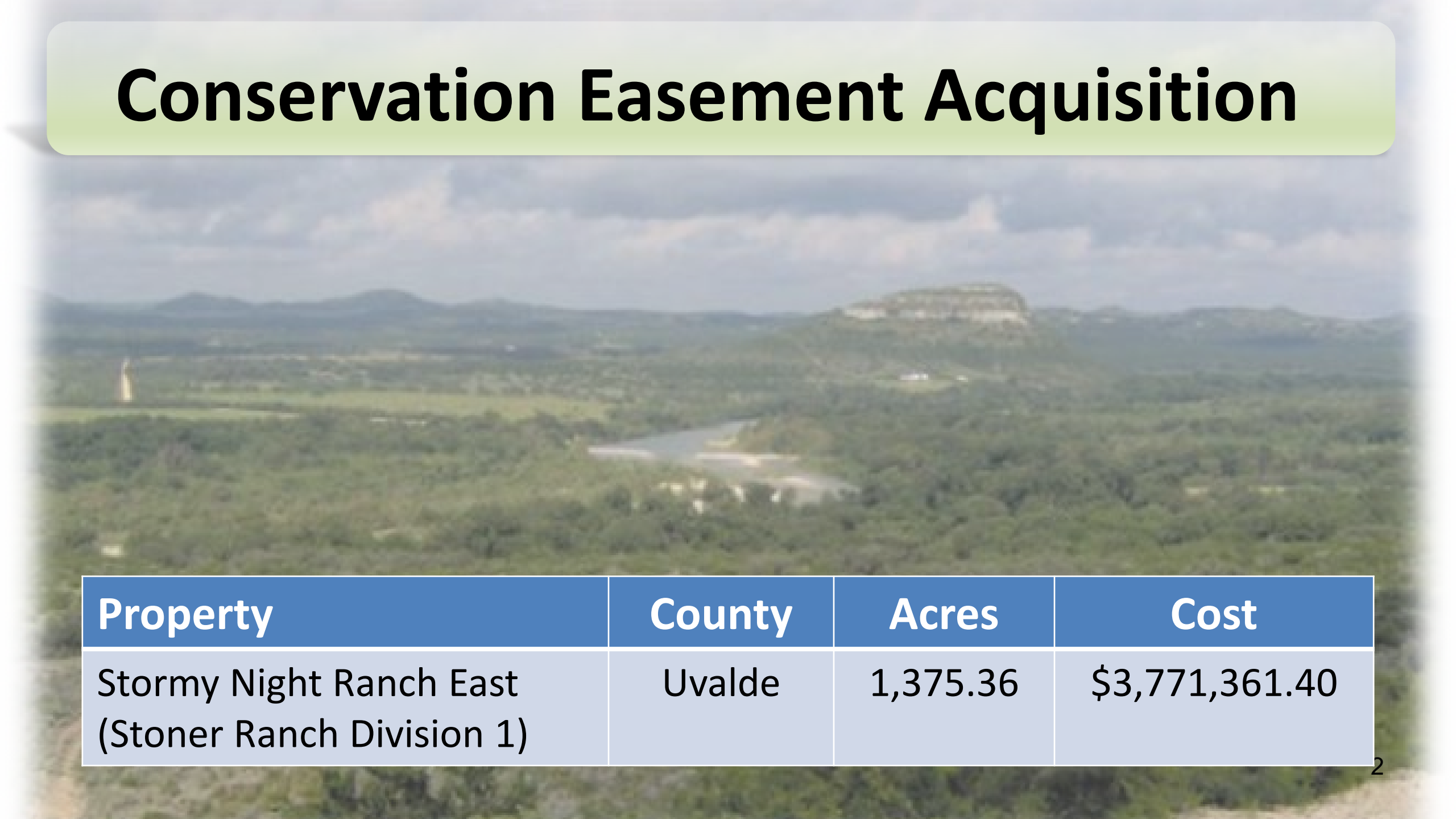
# **Edwards Aquifer Protection Program Conservation Easement Acquisition**

City Council

November 7, 2024

Parks and Recreation Department

# Conservation Easement Acquisition



Property	County	Acres	Cost
Stormy Night Ranch East (Stoner Ranch Division 1)	Uvalde	1,375.36	\$3,771,361.40

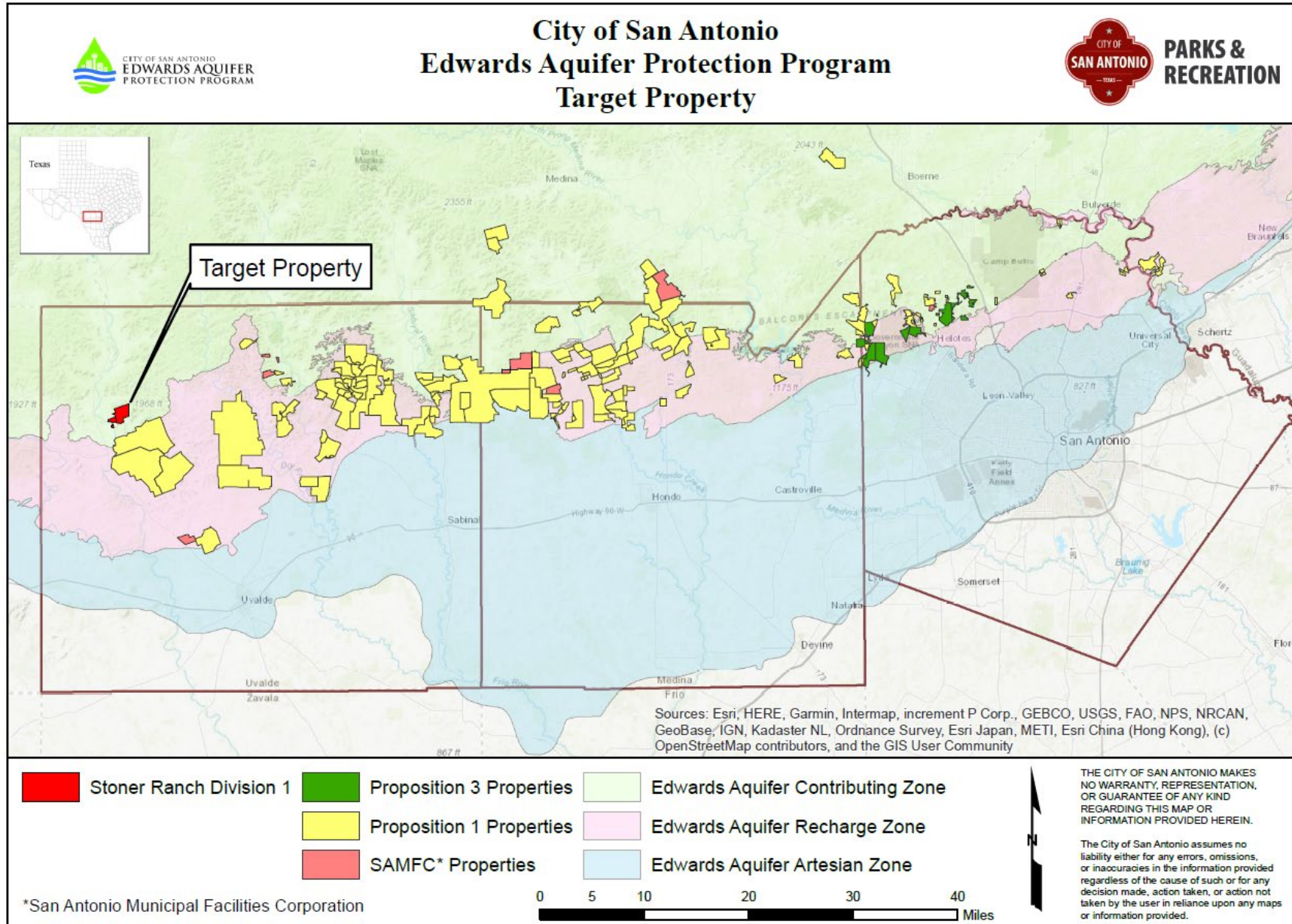
# Acquisition Benefits

- Property located over the Edwards Aquifer Contributing Zone in Uvalde County
- Important recharge features on property
- High water quantity and high water quality benefits
- Results in increase of 1,375.36 acres





# Total Land Protected = 185,193 acres



# Program Status

- 186,866 acres protected with approval of today's proposed acquisitions
- To date, City Council has approved the acquisition of 133 conservation easements and 25 fee simple purchases
- Propositions 1 and 3 sales tax fully expended
- 10-year, \$100M acquisition program approved in 2020 under SAMFC
  - \$30M in debt issued in August 2023 for FY 2023 – 2025 acquisitions
  - \$16.8M expended to date to protect 6,360 acres

# Recommendation

- Staff recommends approval