

# **Southern Edwards Plateau Habitat Conservation Plan - Rancho Diana Preserve**

*Conservation Advisory Board*

March 26, 2025



# Background

---

- Working with Joint Base San Antonio (JBSA) since 2008
  - establish ordinances to help protect the military's mission
- Have created 15 ordinances
  - Includes SEP-HCP program
  - Creation of a Regional Habitat Conservation Plan
    - Conserve natural communities while accommodating compatible uses around military bases
- Plan is a partnership between COSA, Bexar County and USFW





# SEP-HCP

---

- Southern Edwards Plateau – Habitat Conservation Plan
  - Promotes regional conservation
  - Provides support for Camp Bullis
  - Involves local stakeholders in conservation planning
  - Streamlines endangered species permitting
  - Implements locally appropriate and cost-effective permitting and conservation strategies
- Optional tool for compliance with the Endangered Species Act (ESA)
  - Landowners
  - City of San Antonio
  - Bexar County
  - Utilities and
  - Anyone conducting non-federal activities



# Existing Preserves



2017

- Government Canyon – created a base line for the plan
- Northern Preserve – 678.50 acres

2018

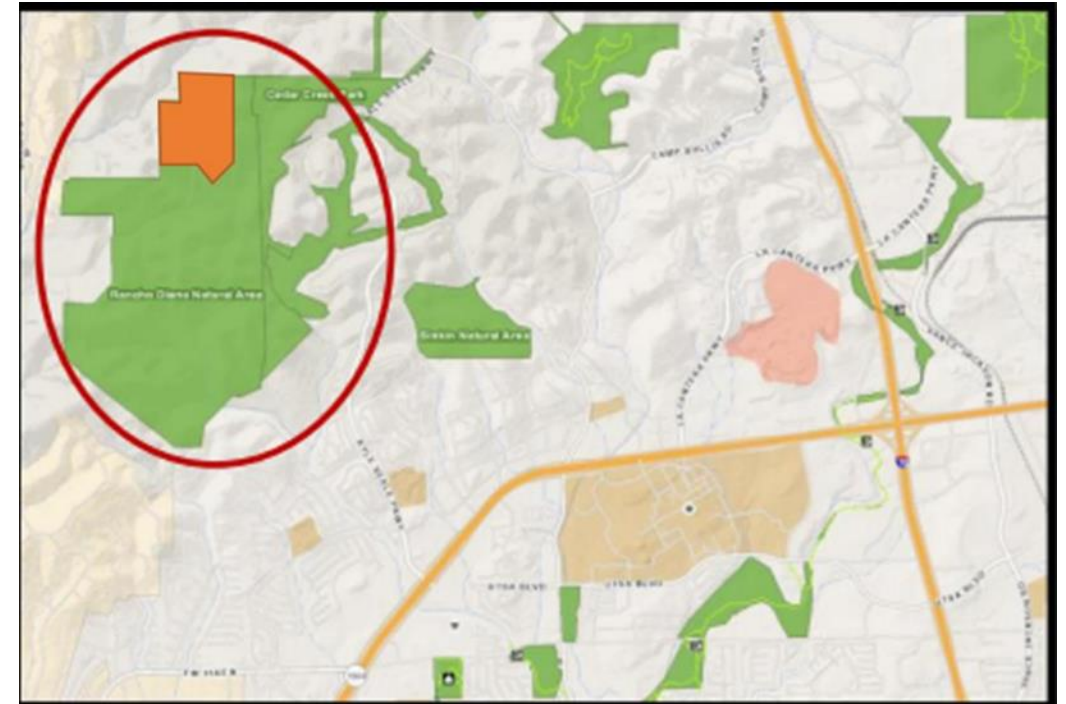
- Panther Springs – 471.00 acres

2023

- Crane Bat Cave – 361.26 acres

# Rancho Diana Preserve

- 1,152-acre preserve acquired originally in 2001 with Prop 3 funding
- SEP program looking to transfer management and monitoring of 163 acres
  - To establish a new SEP-HCP Karst Preserve
  - Will generate 1,670 karst enrollment acres
- Property will benefit from 2 layers of protection:
  - EAPP conservation easement and
  - SEP-HCP requirements
- SEP-HCP Fund will transfer \$1,507,396.29 to Parks Department for future EAPP purchases
- Process mirrors Crane Bat Cave Preserve
  - Established in 2023

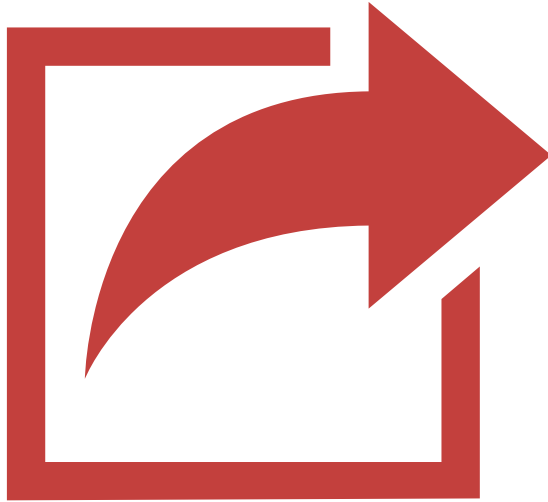


# Timeline



# Recommendation

---



- Staff recommends approval to move forward to City Council consideration of:
  - Transferring \$1,507,396.29 from the SEP-HCP fund to the EAPP fund in exchange for the transfer of maintenance and monitoring for 163 acres within the Rancho Diana Preserve



**THANK YOU!**  
**Monique Kormann**  
**Policy Administrator**

