

Data Source: City of San Antonio Enterprise GIS, Bexar Metro 911, Bexar Appraisal District  
This Geographic Information System Product, received from the City of San Antonio is provided "as is" without warranty of any kind, and the City of San Antonio expressly disclaims all express and implied warranties, including but not limited to the implied warranties of merchantability and fitness for a particular purpose. The City of San Antonio does not warrant, guarantee, or make any representations regarding the use, or the results of the use, of the information provided to you by the City of San Antonio in terms of correctness, accuracy, reliability, timeliness or otherwise. The entire risk as to the results and performance of any information obtained from the City of San Antonio is entirely assumed by the recipient.  
\*Please contact the responsible City of San Antonio Department for specific determinations.  
Map Created by: g071173  
Map File Location: C:\ArcView\Transportation Department\ART\_01022024\Airport to Rector.mxd  
Map Last Edited: 10/10/2024  
PDF Filename: Airport to Rector.pdf

**Current Zoning**  
Residential Single-Family District  
Multi-Family District  
Residential Mixed District

Manufactured Housing District  
Mixed Use District  
Commercial District  
Neighborhood Commercial District

Downtown District  
General Industrial District  
Heavy Industrial District  
Infill Development Zone  
Unzoned Right of Way

Form Base Zoning District  
Office District  
Resource Protection District

ART NS Stations  
CRAG Boundary  
TOD Applicability Line

ART Corridor  
City of San Antonio  
City Council Boundary  
Cities and Towns  
Bexar County

Military Bases  
Creeks  
Lakes

Overlay Districts such as Airport Overlay, Neighborhood Conservation, Historic Overlay, Historic Landmarks, River Improvement Overlay, and Mission Protection Overlay, and any others are not shown on the map

**DRAFT**

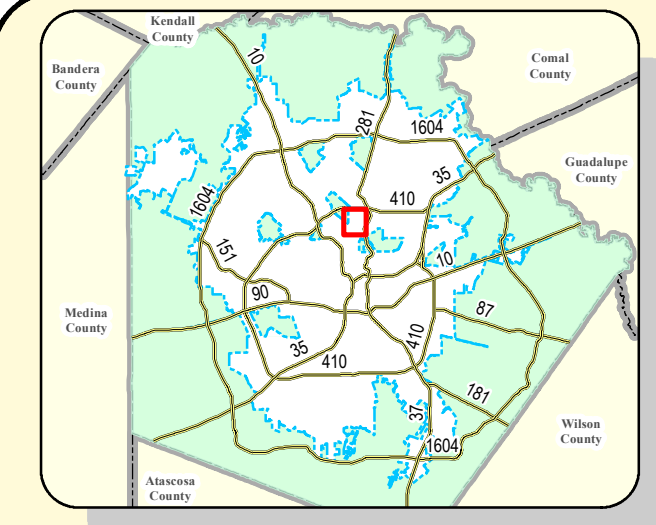
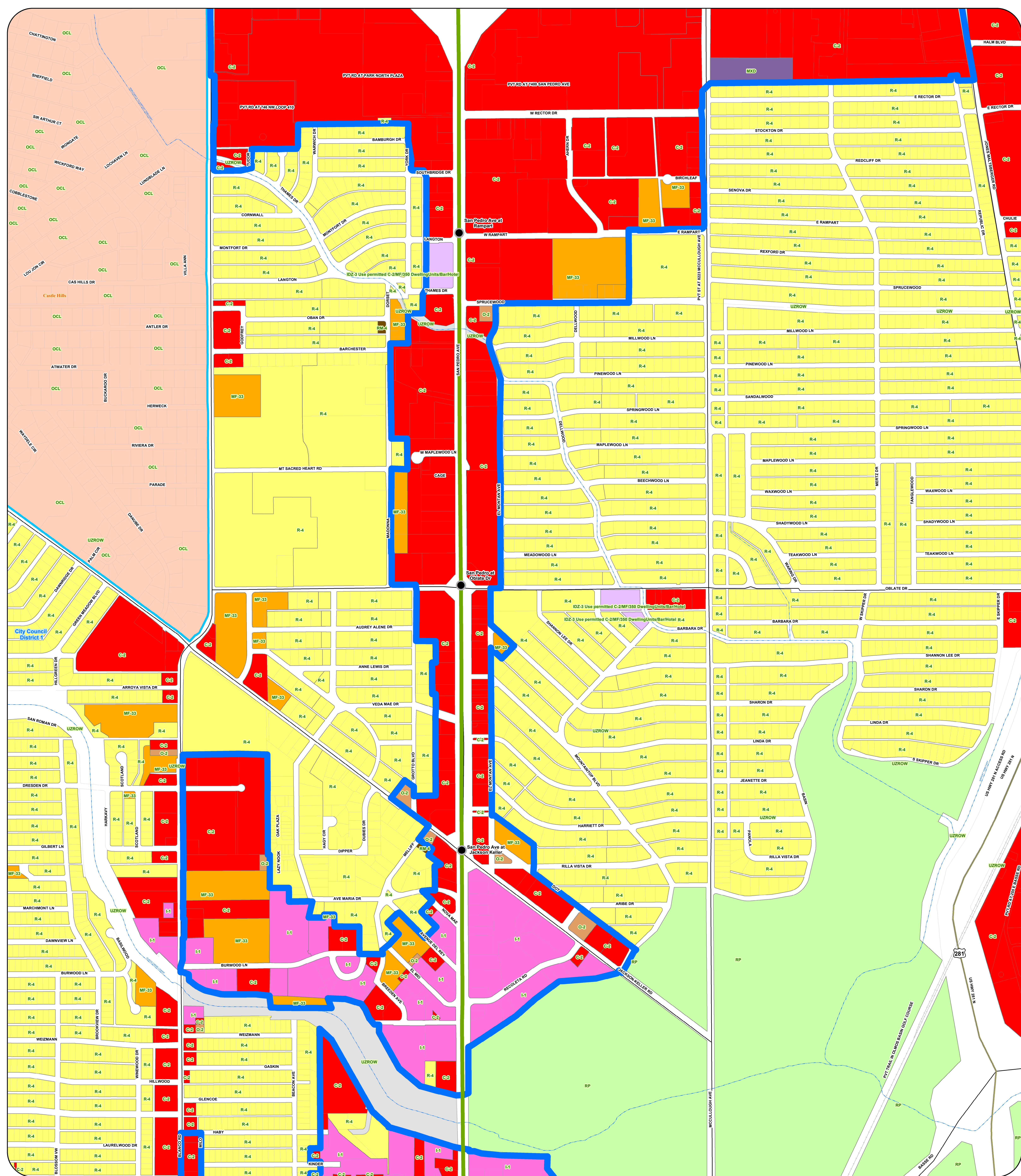
# City of San Antonio 2024 Airport to Rector TOD

0 0.125 0.25 Miles

**City of San Antonio**  
Information Technology Services Department  
GIS Public Services Division  
City Tower  
100 W. Houston St., 18th floor  
San Antonio, TX 78205







**Current Zoning**

- Residential Single-Family District
- Multi-Family District
- Residential Mixed District

- Manufactured Housing District
- Mixed Use District
- Commercial District
- Neighborhood Commercial District

- Downtown District
- General Industrial District
- Heavy Industrial District
- Infill Development Zone

- Form Base Zoning District
- Office District
- Resource Protection District
- Unzoned Right of Way
- Downtown Business District

- ART NS Stations
- CRAG Boundary
- TOD Applicability Line
- ART Corridor

- City of San Antonio
- City Council Boundary
- Cities and Towns
- Bexar County

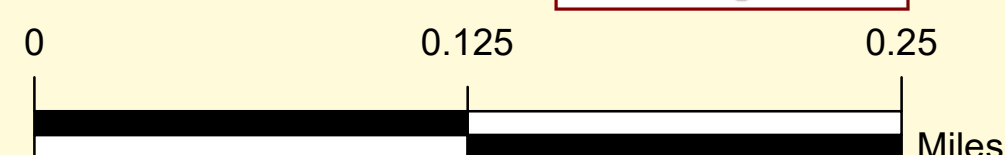
- Military Bases
- Creeks
- Lakes

Overlay Districts such as Airport Overlay, Neighborhood Conservation, Historic Overlay, Historic Landmarks, River Improvement Overlay, and Mission Protection Overlay, and any others are not shown on the map

**DRAFT**

# City of San Antonio 2024

## Rector to Olmos Creek TOD

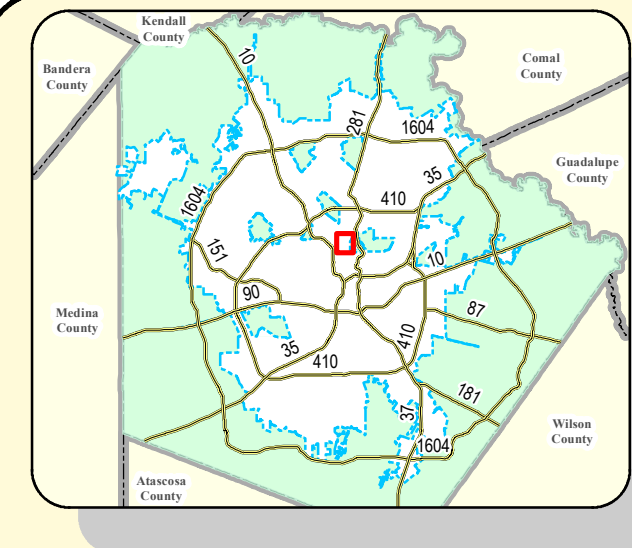
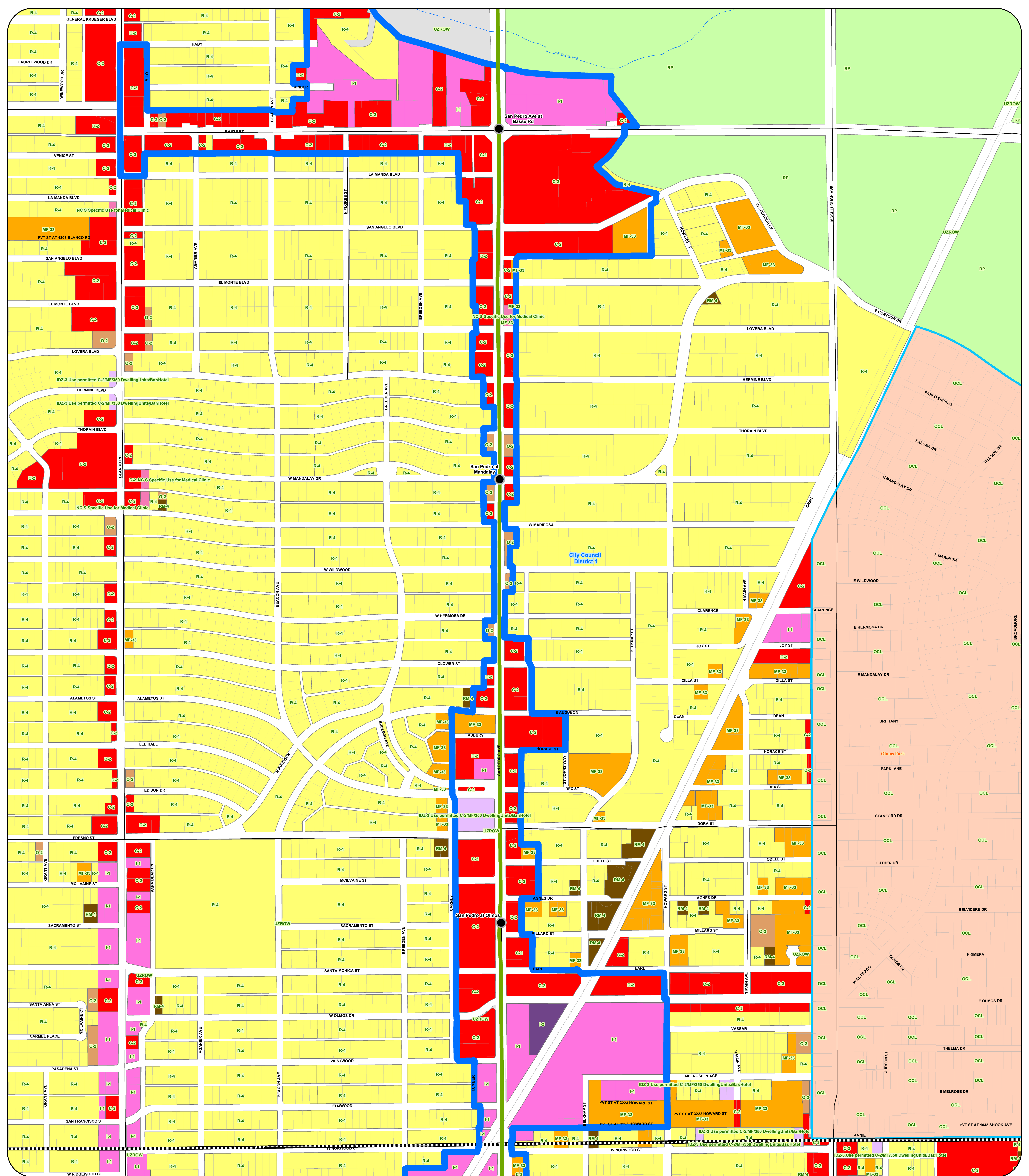


**City of San Antonio**  
Information Technology Services Department  
GIS Public Services Division  
100 W. Houston St., 18th floor  
San Antonio, TX 78205



Data Source: City of San Antonio Enterprise GIS, Bexar Metro 911, Bexar Appraisal District.  
This Geographic Information System Product, received from The City of San Antonio is provided "as is" without warranty of any kind, and the City of San Antonio expressly disclaims all express and implied warranties, including but not limited to the implied warranties of merchantability and fitness for a particular purpose. The City of San Antonio does not warrant, guarantee, or make any representations regarding the use, or the results of the use, of the information provided to you by the City of San Antonio in terms of correctness, accuracy, reliability, timeliness or otherwise. The entire risk as to the results and performance of any information obtained from the City of San Antonio is entirely assumed by the recipient.  
\*Please contact the responsible City of San Antonio Department for specific determinations.  
Map Created by: g011173  
Map File Location: C:\Users\GIS\Documents\GIS\2024\2024Rector to Olmos Creek.mxd  
Map Last Edited: 10/10/2024  
PDF Filename: Rector to Olmos Creek.pdf





**DRAFT**

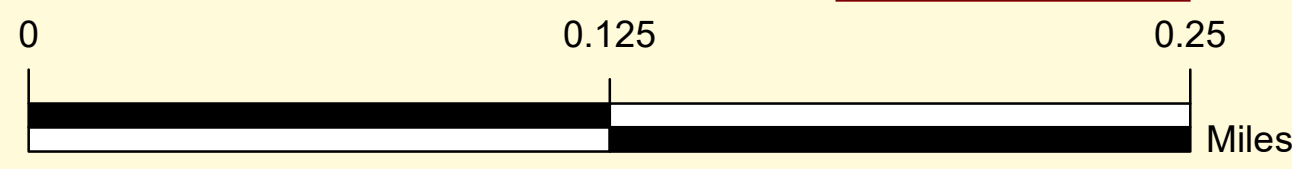
Overlay Districts such as Airport Overlay, Neighborhood Conservation, Historic Overlay, Historic Landmarks, River Improvement Overlay, and Mission Protection Overlay, and any others are not shown on the map

Data Source: City of San Antonio Enterprise GIS, Bexar Metro 911, Bexar Appraisal District.  
This Geographic Information System Product, received from the City of San Antonio is provided "as is" without warranty of any kind, and the City of San Antonio expressly disclaims all express and implied warranties, including but not limited to the implied warranties of merchantability and fitness for a particular purpose. The City of San Antonio does not warrant, guarantee, or make any representations regarding the use, or the results of the use, of the information provided to you by the City of San Antonio in terms of correctness, accuracy, reliability, timeliness or otherwise. The entire risk as to the results and performance of any information obtained from the City of San Antonio is entirely assumed by the recipient.  
\*Please contact the responsible City of San Antonio Department for specific determinations.  
Map Created by: g07173  
Map File Location: C:\Development\Transportation Department\GIS\2023\GIS\Olmos Creek to Northern Edge of CRAG Boundary.mxd  
Map Last Edited: 10/10/2024  
PDF Filename: Olmos Creek to Northern Edge of CRAG Boundary.pdf

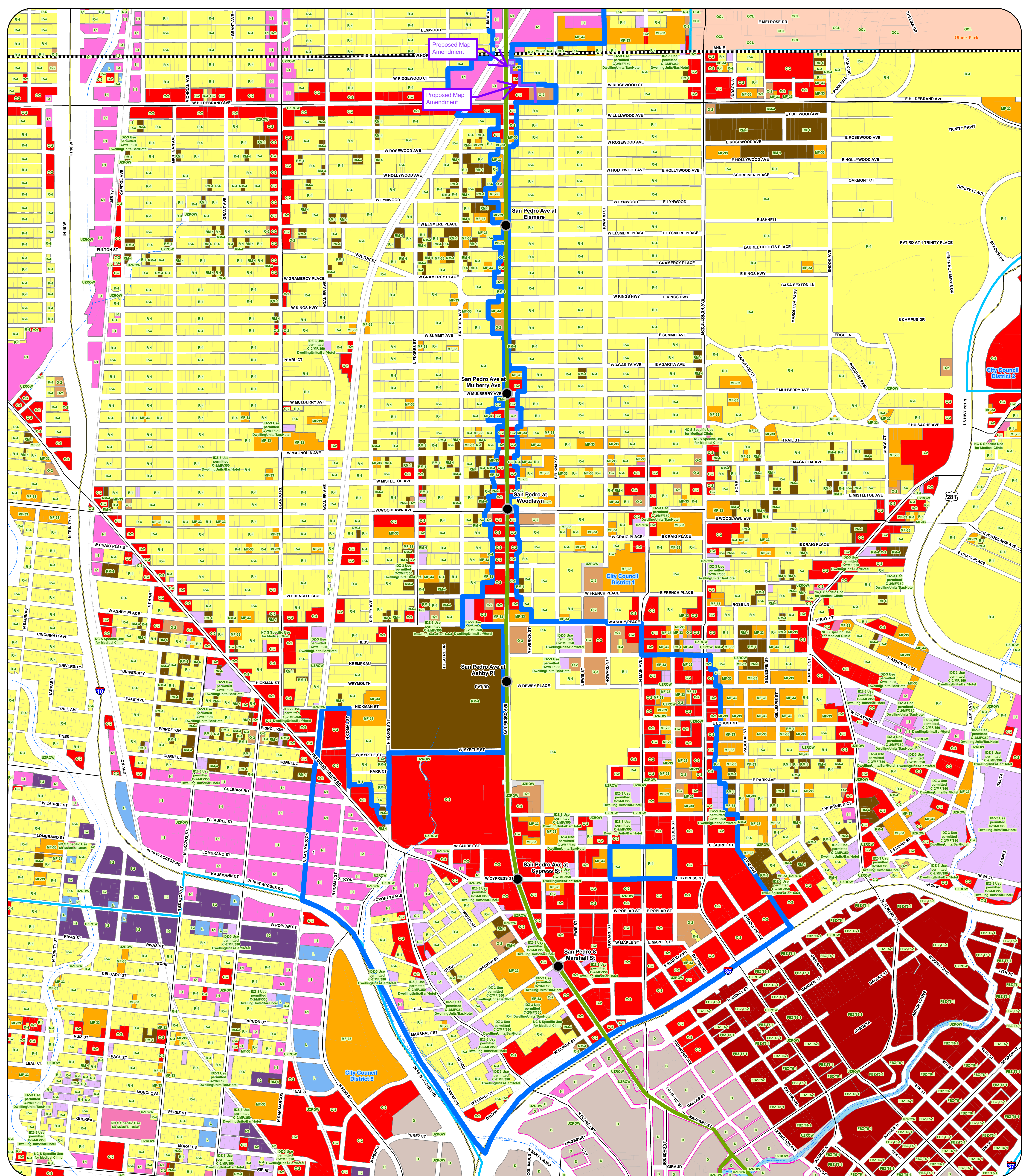
# City of San Antonio 2024

## Olmos Creek to Northern Edge of CRAG Boundary TOD

- |                                  |                             |                              |                 |                       |                |
|----------------------------------|-----------------------------|------------------------------|-----------------|-----------------------|----------------|
| Manufactured Housing District    | Downtown District           | Form Base Zoning District    | ART NS Stations | City of San Antonio   | Military Bases |
| Mixed Use District               | General Industrial District | Office District              | CRAG Boundary   | City Council Boundary | Creeks         |
| Commercial District              | Heavy Industrial District   | Resource Protection District | ART Corridor    | Cities and Towns      | Lakes          |
| Neighborhood Commercial District | Infill Development Zone     | Unzoned Right of Way         |                 | Bexar County          | ART Corridor   |
|                                  | Downtown Business District  |                              |                 |                       |                |







#### Current Zoning

- Residential Single-Family District
- Multi-Family District
- Residential Mixed District
- Manufactured Housing District
- Mixed Use District
- Commercial District
- Neighborhood Commercial District
- Downtown District
- General Industrial District
- Heavy Industrial District
- Infill Development Zone
- Form Base Zoning District
- Office District
- Resource Protection District
- Unzoned Right of Way
- Downtown Business District

#### ART NS Stations

- ART NS Stations
- CRAG Boundary
- ART Corridor
- TOD Applicability Line

#### City of San Antonio

- City of San Antonio
- City Council Boundary
- Cities and Towns
- Bexar County

#### Military Bases

- Military Bases
- Creeks
- Lakes

Overlay Districts such as Airport Overlay, Neighborhood Conservation, Historic Overlay, Historic Landmarks, River Improvement Overlay, and Mission Protection Overlay, and any others are not shown on the map

Data Source: City of San Antonio Enterprise GIS, Bexar Metro 911, Bexar Appraisal District

This Geographic Information System Product, received from the City of San Antonio is provided "as is" without warranty of any kind, and the City of San Antonio expressly disclaims all express and implied warranties, including but not limited to the implied warranties of merchantability and fitness for a particular purpose. The City of San Antonio does not warrant, guarantee, or make any representations regarding the use, or the results of the use, of the information provided to you by the City of San Antonio in terms of correctness, accuracy, reliability, timeliness or otherwise. The entire risk as to the results and performance of any information obtained from the City of San Antonio is entirely assumed by the recipient.

"Please contact the responsible City of San Antonio Department for specific determinations."

Map Created by: g01173  
Map File Location: C:\Users\g01173\Documents\GIS\2024\CRAG Boundary to Interstate 35.mxd  
Map Last Edited: 10/29/2024  
PDF Filename: CRAG Boundary to Interstate 35.pdf

**DRAFT**

# City of San Antonio 2024 CRAG Boundary to Interstate 35

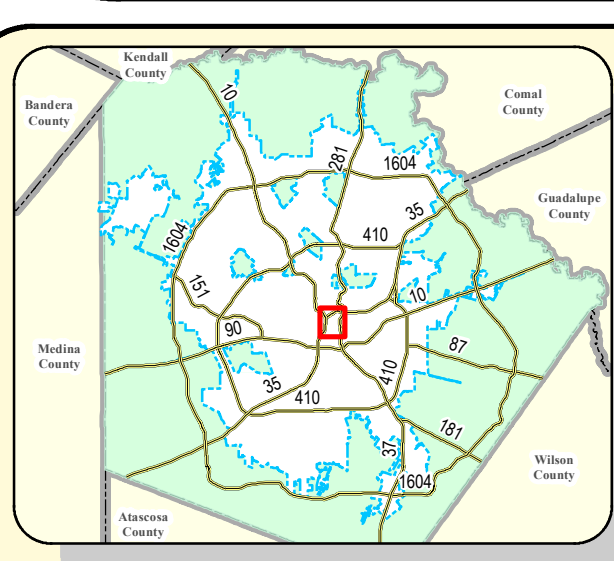
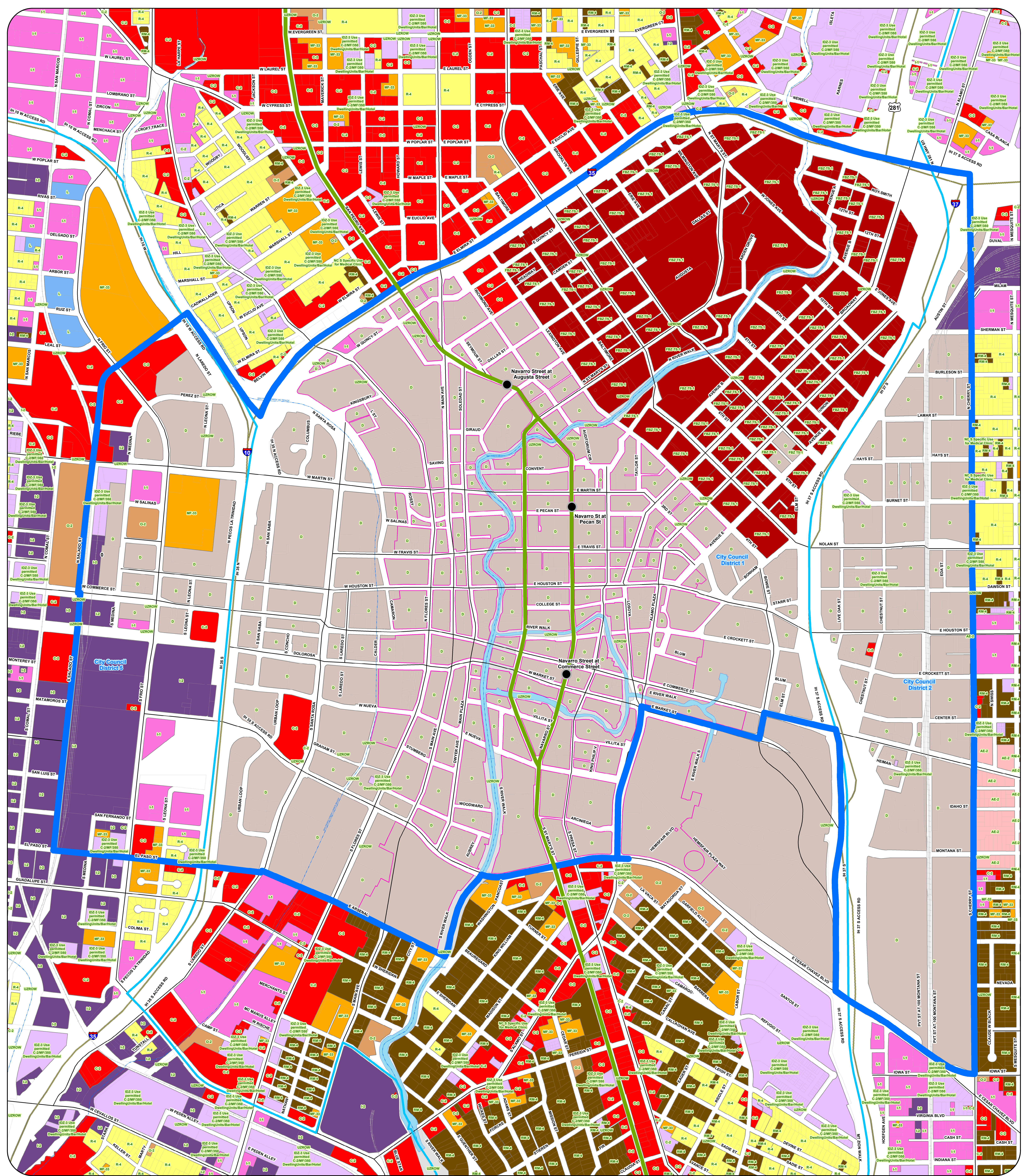
City of San Antonio

Information Technology Services Department  
GIS Public Services Division

City Tower  
100 W. Houston St., 18th floor  
San Antonio, TX 78205



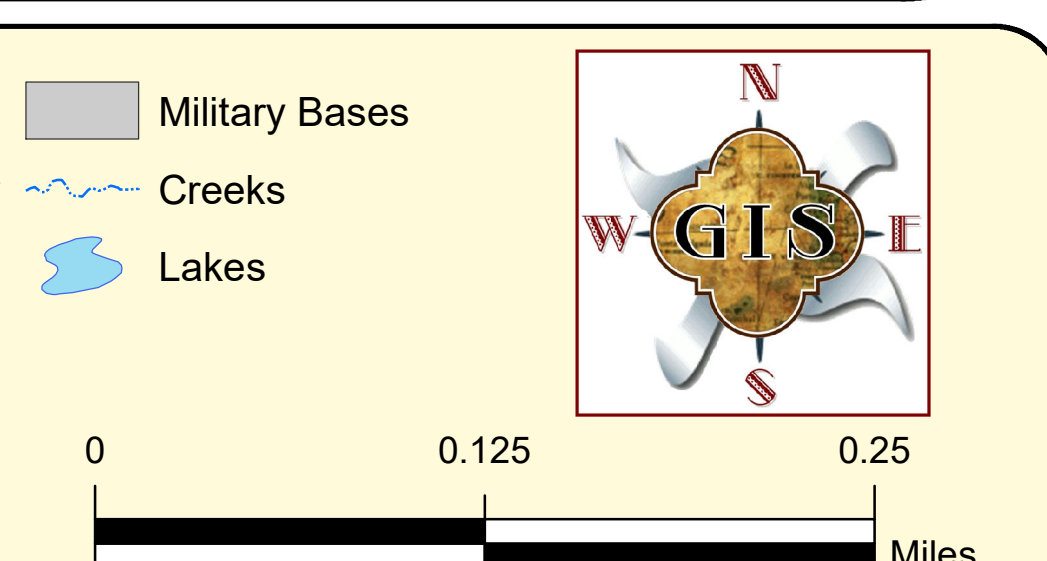




Data Source: City of San Antonio Enterprise GIS, Bexar Metro 911, Bexar Appraisal District  
This Geographic Information System Product, received from the City of San Antonio, is provided "as is" without warranty of any kind, and the City of San Antonio expressly disclaims all express and implied warranties, including but not limited to the implied warranties of merchantability and fitness for a particular purpose. The City of San Antonio does not warrant, guarantee, or make any representations regarding the use, or the results of the use, of the information provided to you by the City of San Antonio in terms of correctness, accuracy, reliability, timeliness or otherwise. The entire risk as to the results and performance of any information obtained from the City of San Antonio is entirely assumed by the recipient. Please contact the responsible City of San Antonio Department for specific determinations.  
Map Created by: g01173  
Map Revision: 01/2024  
Map Last Edited: 10/10/2024  
PDF Filename: Downtown.pdf

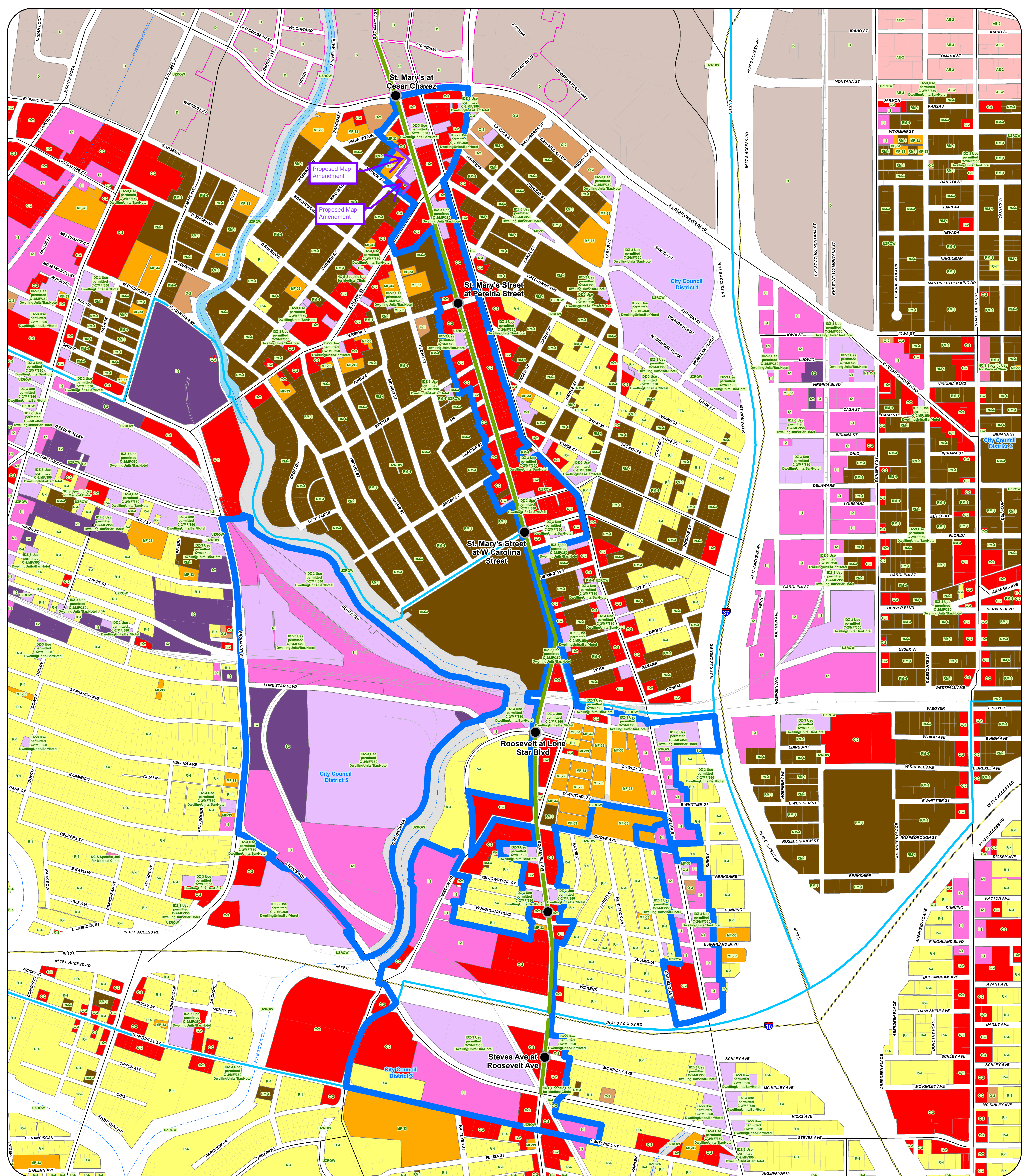
- |                                    |                                    |                               |                                  |                              |                     |                       |                |
|------------------------------------|------------------------------------|-------------------------------|----------------------------------|------------------------------|---------------------|-----------------------|----------------|
| <b>Current Zoning</b>              | General Industrial District        | Multi-Family District         | Neighborhood Commercial District | Form Base Zoning District    | ART NS Stations     | City of San Antonio   | Military Bases |
| Multi-Family District              | Heavy Industrial District          | Residential Mixed District    | Downtown District                | Office District              | CRAG Boundary       | City Council Boundary | Creeks         |
| Commercial District                | Office District                    | Manufactured Housing District | General Industrial District      | Resource Protection District | ART Corridor        | Cities and Towns      | Lakes          |
| Downtown District                  | Form Base Zoning District          | Mixed Use District            | Heavy Industrial District        | Unzoned Right of Way         | TOD Station Buffers | Bexar County          |                |
| Residential Single-Family District | Residential Single-Family District | Commercial District           | Infill Development Zone          | Downtown Business District   |                     |                       |                |

# DRAFT City of San Antonio 2024 Downtown



**City of San Antonio**  
Information Technology Services Department  
GIS Public Services Division  
100 W. Houston St., 15th floor  
San Antonio, TX 78205





**Current Zoning**

- Residential Single-Family District
- Multi-Family District
- Residential Mixed District

- Manufactured Housing District
- Mixed Use District
- Commercial District
- Neighborhood Commercial District

- Downtown District
- General Industrial District
- Heavy Industrial District
- Infill Development Zone
- Form Base Zoning District
- Office District
- Resource Protection District
- Unzoned Right of Way
- Downtown Business District

- ART NS Stations
- TOD Applicability Line
- CRA Boundary
- ART Corridor

- City of San Antonio
- City Council Boundary
- Cities and Towns
- Bexar County
- Military Bases
- Creeks
- Lakes

Overlay Districts such as Airport Overlay, Neighborhood Conservation, Historic Overlay, River Improvement Overlay, and Mission Protection Overlay, and any others are not shown on the map

Data Source: City of San Antonio Enterprise GIS, Bexar Metro 911, Bexar Appraisal District  
This Geographic Information System Product, received from the City of San Antonio is provided "as is" without warranty of any kind, and the City of San Antonio expressly disclaims all express and implied warranties, including but not limited to the implied warranties of merchantability and fitness for a particular purpose. The City of San Antonio does not warrant, guarantee, or make any representations regarding the use, or the results of the use, of the information provided to you by the City of San Antonio in terms of correctness, accuracy, reliability, timeliness or otherwise. The entire risk as to the results and performance of any information obtained from the City of San Antonio is entirely assumed by the recipient. Please contact the responsible City of San Antonio Department for specific determinations.  
Map Created by: g07173  
Map Last Edited: 10/10/2024  
PDF Filename: Cesar Chavez to Steves.pdf

# DRAFT City of San Antonio 2024 Cesar Chavez to Steves

0 0.125 0.25 Miles

**City of San Antonio**  
Information Technology Services Department  
GIS Public Services Division  
100 W. Houston St., 18th floor  
San Antonio, TX 78205