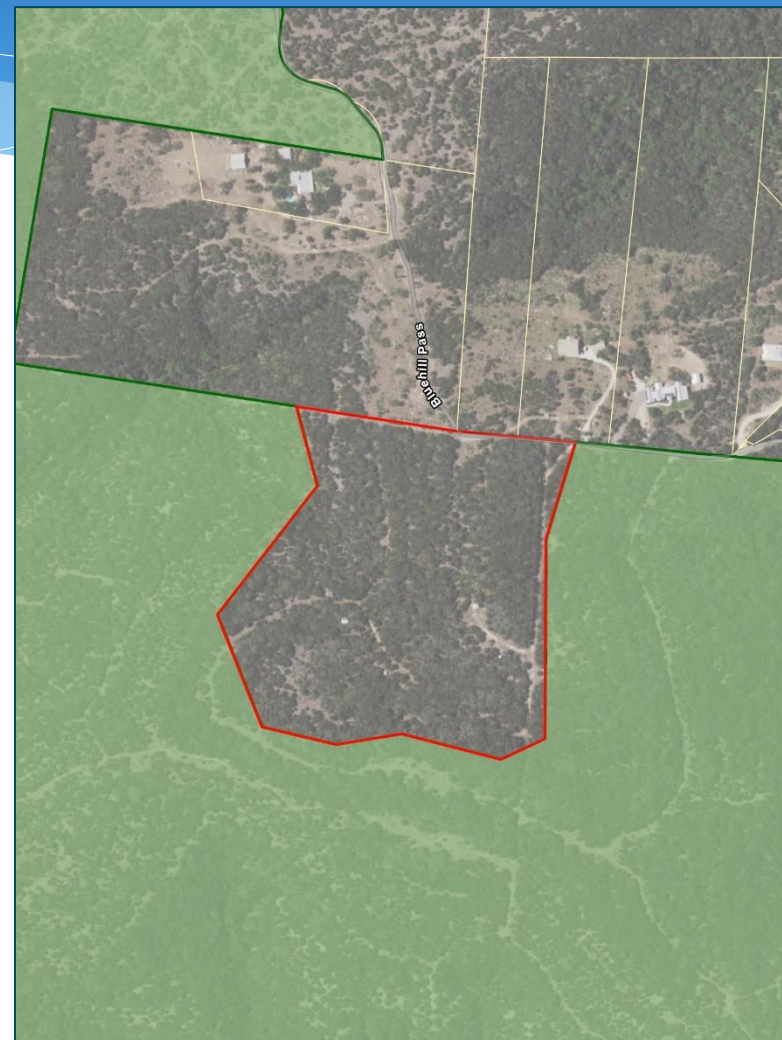
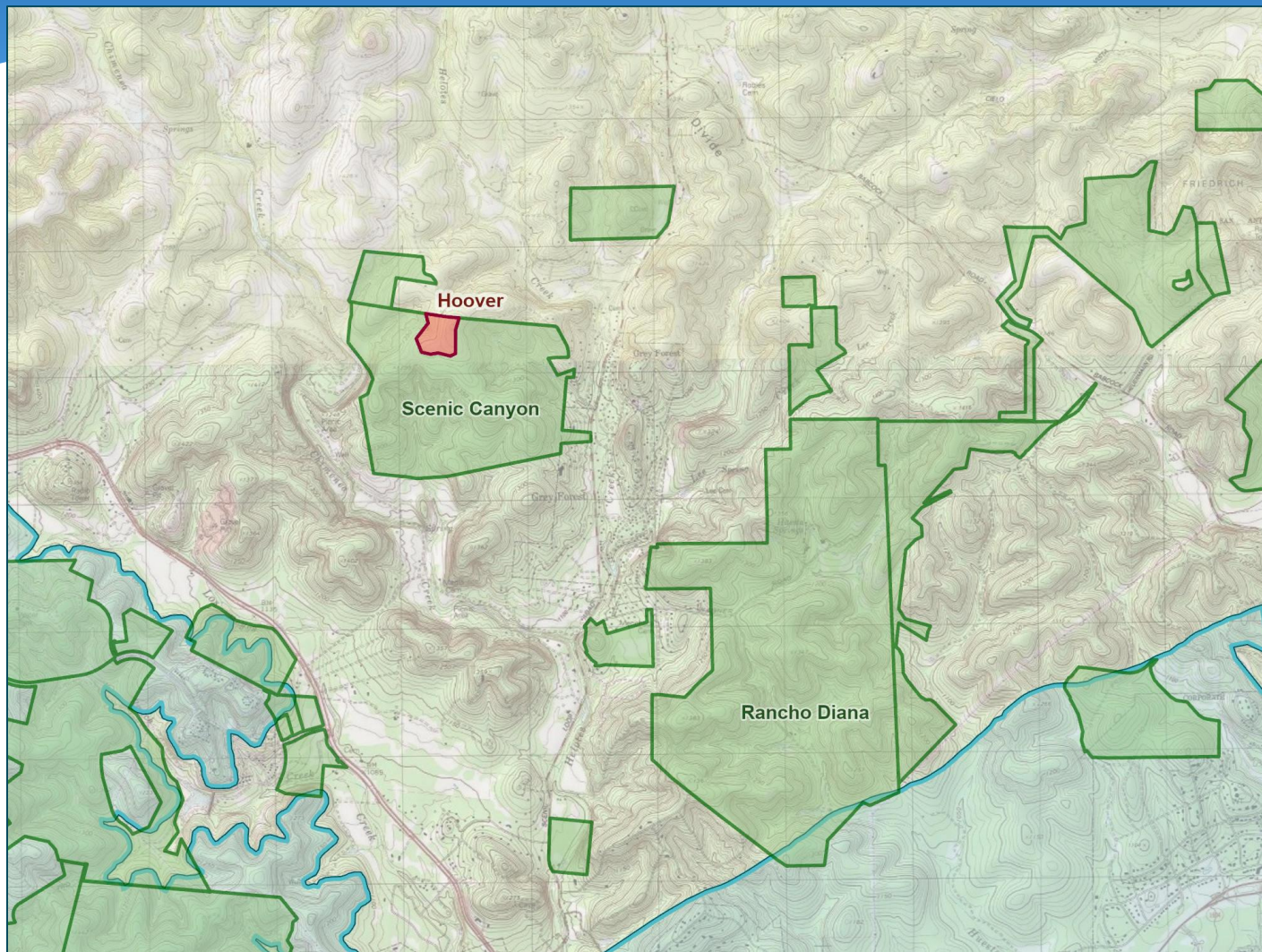




Hoover Property
Gilleland Ranch Phase II
Stoner Ranch

Hoover Property (20 Acres) Bexar County

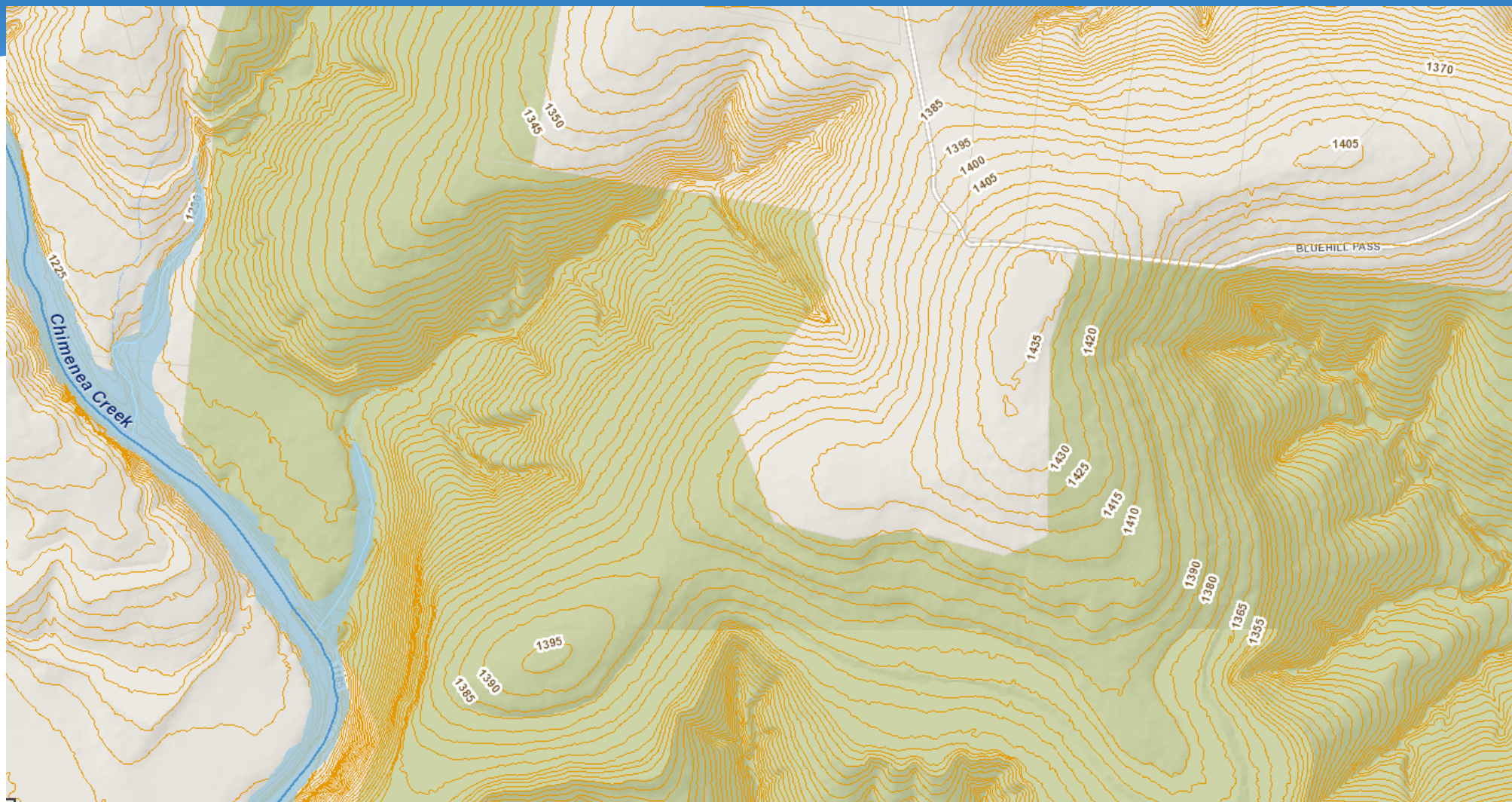


Hoover Property (20 Acres) Bexar County

- In Grey Forest adjacent to Scenic Canyon and Blue Hill Pass properties
- Top 10% in SET model
- EAA geological assessment ranked moderate-to-high for water quality and quantity
- **Requesting Stage 2 consideration**



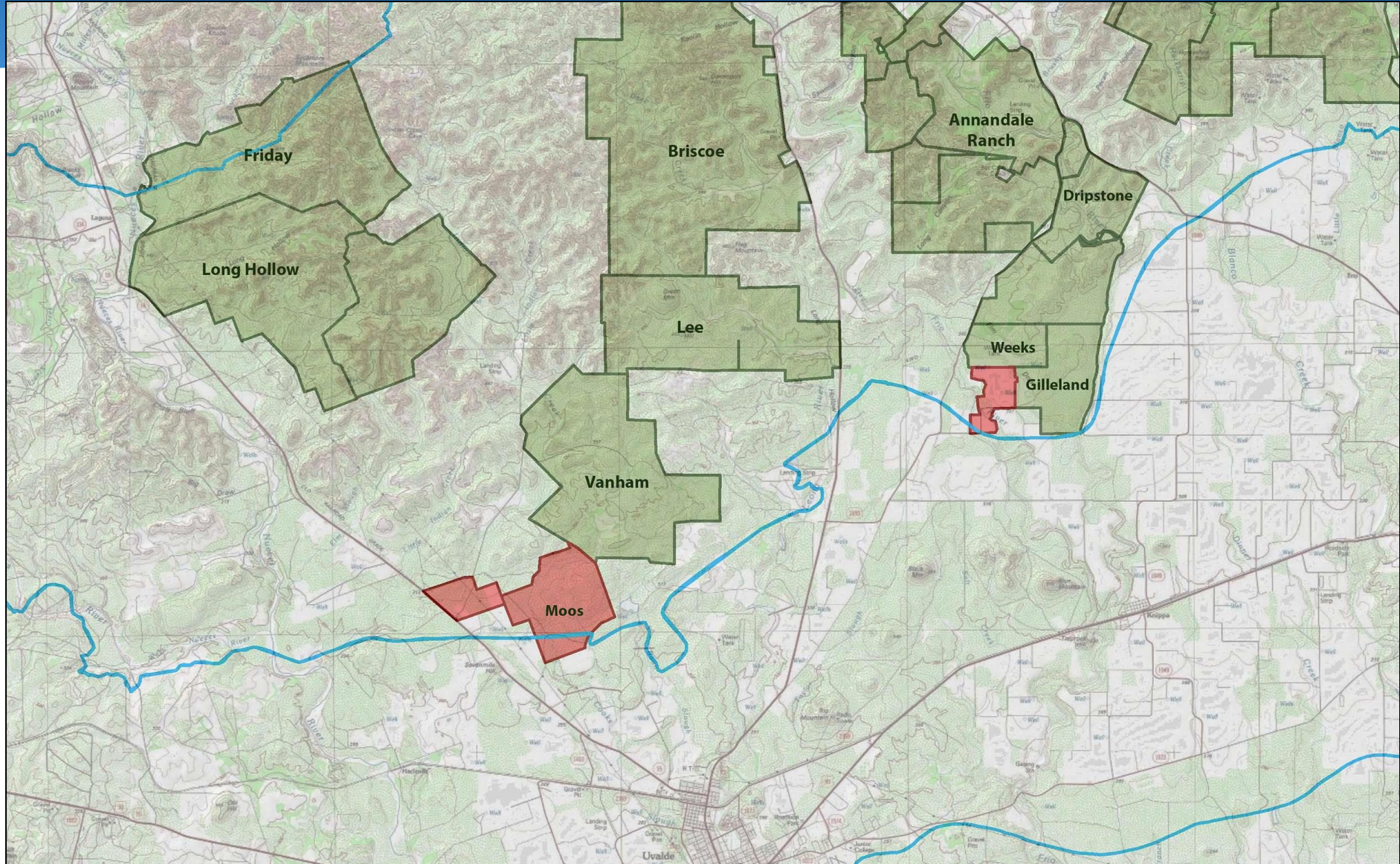
Hoover Property (20 Acres) Bexar County



Hoover Property (20 Acres) Bexar County



Gilleland Ranch Phase II (562 Acres) Uvalde County



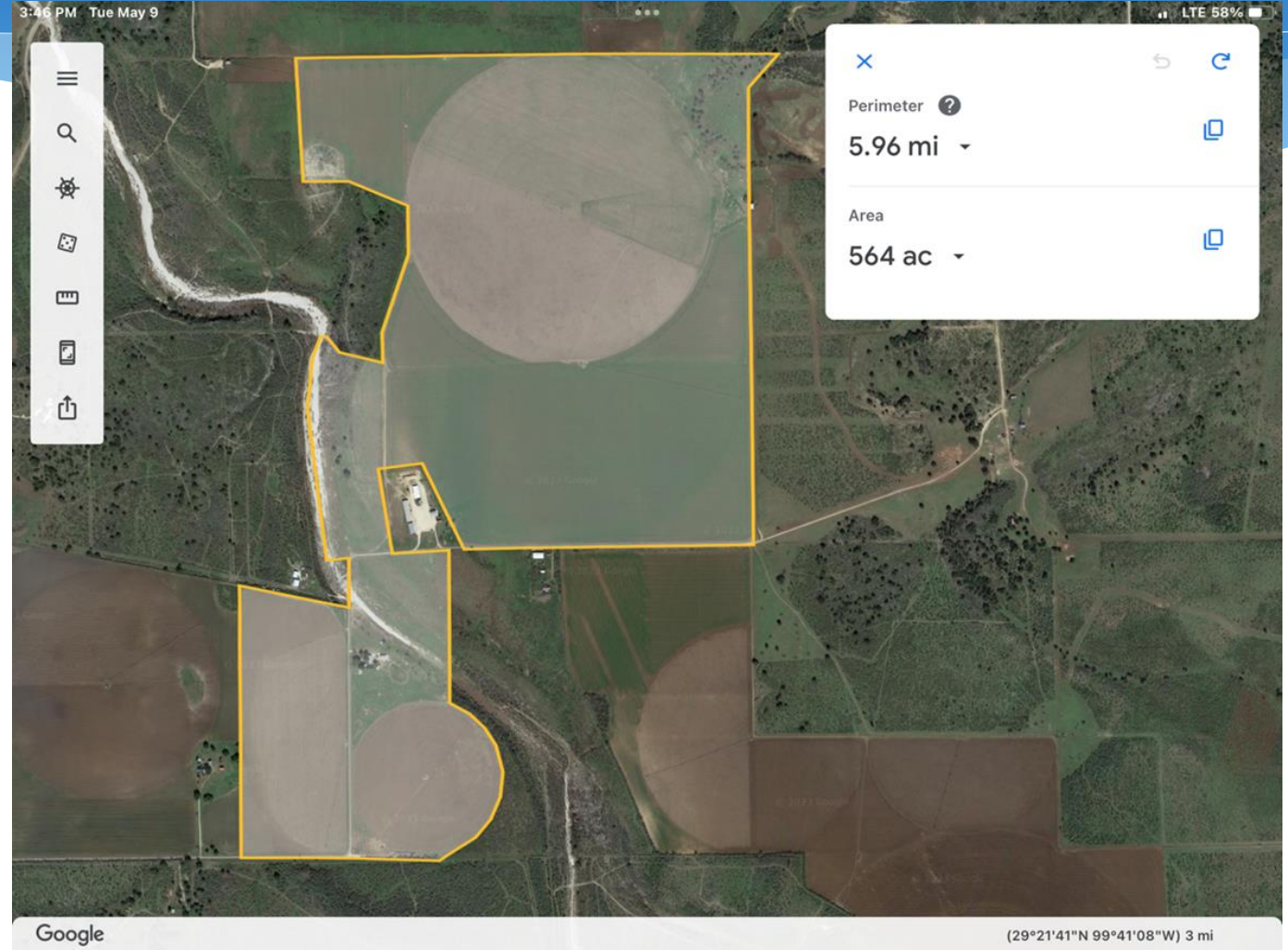
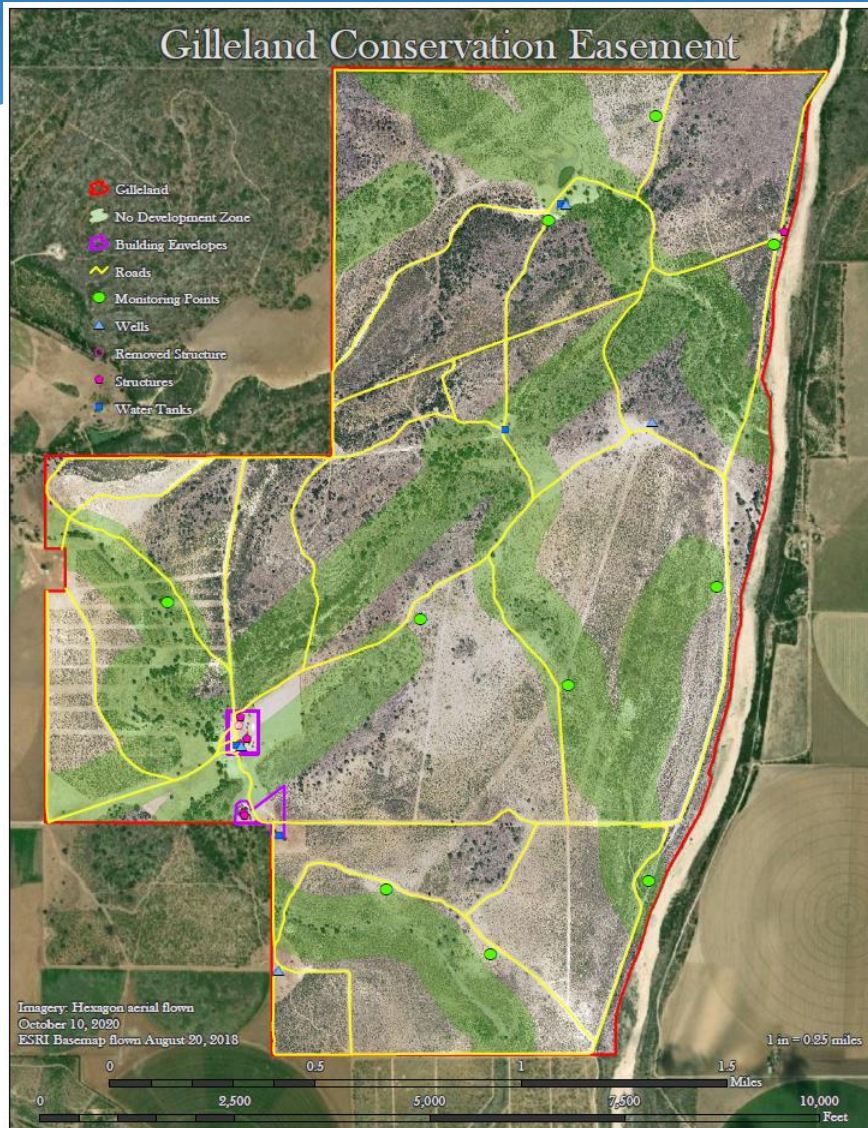
Gilleland Ranch Phase II (562 Acres) Uvalde County

Gilleland Ranch Phase II

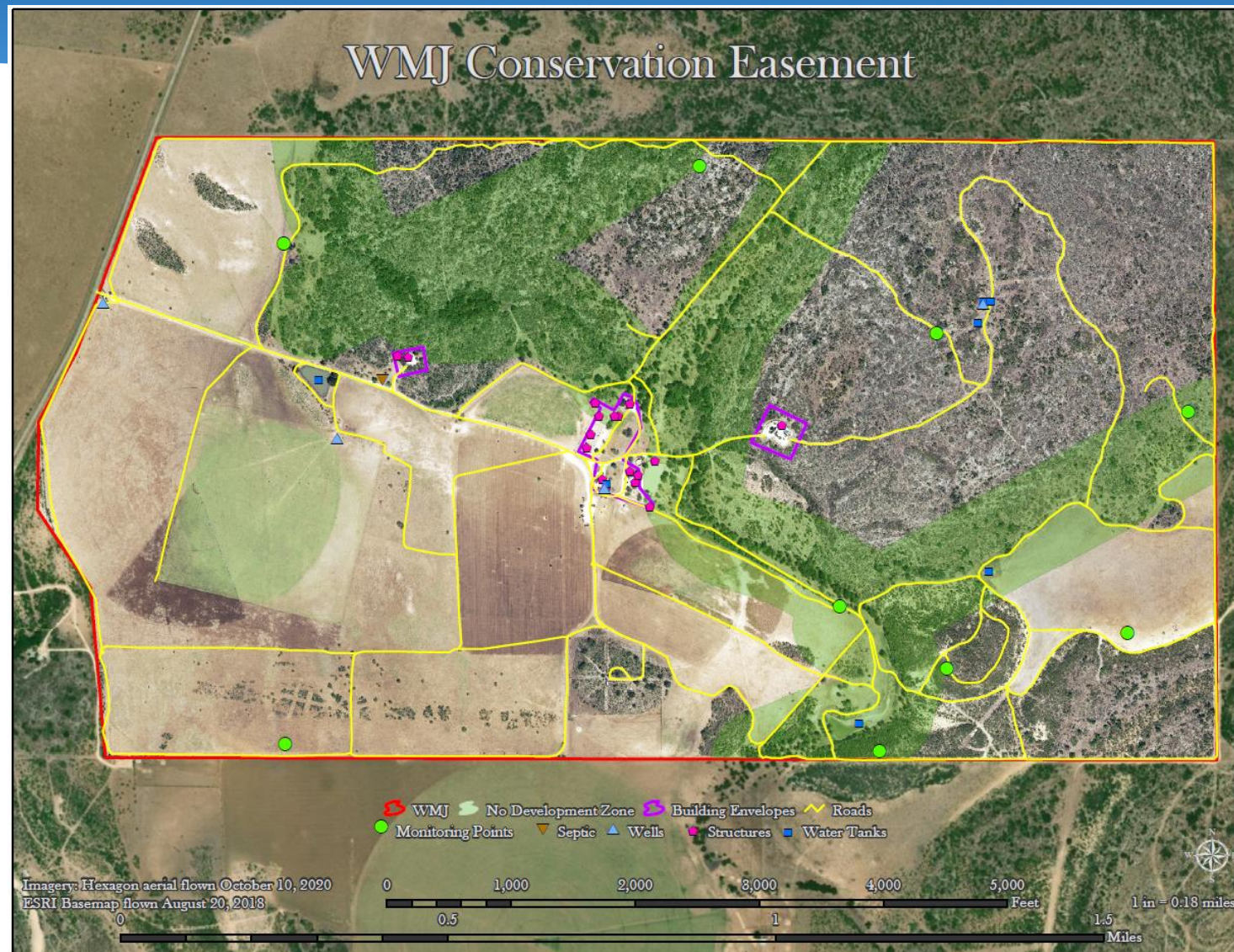
- Mostly located in Recharge Zone (about 10 acres in Artesian Zone)
- Contains Dry Frio River
- Top 10% in SET model; EAA ranked moderate for water quantity and quality
- **Requesting Final Approval**



Gilleland Ranch Phase II (562 Acres) Uvalde County



Gilleland Ranch Phase II (562 Acres) Uvalde County



Gilleland Ranch Phase II (562 Acres) Uvalde County



Gilleland Ranch Phase II (562 Acres) Uvalde County



Stoner Ranch (1,672.9 Acres) Uvalde County

- Located NW of Friday Ranch about 2 miles north of Contributing Zone
- Top 40% of Model
- Contains 1.75 miles of Nueces River; 1.4 miles of Miller Creek
- Geological assessment reports high water quality and high water quantity benefits;
- Three ownership interests; Three separate conservation easements
- Properties recently reappraised
- Propose acquiring Div. 2 CE in FY 2026
- **Requesting Final Approval for Div. 1 and 3**



Stoner Ranch (1,672.9 Acres) Uvalde County

