

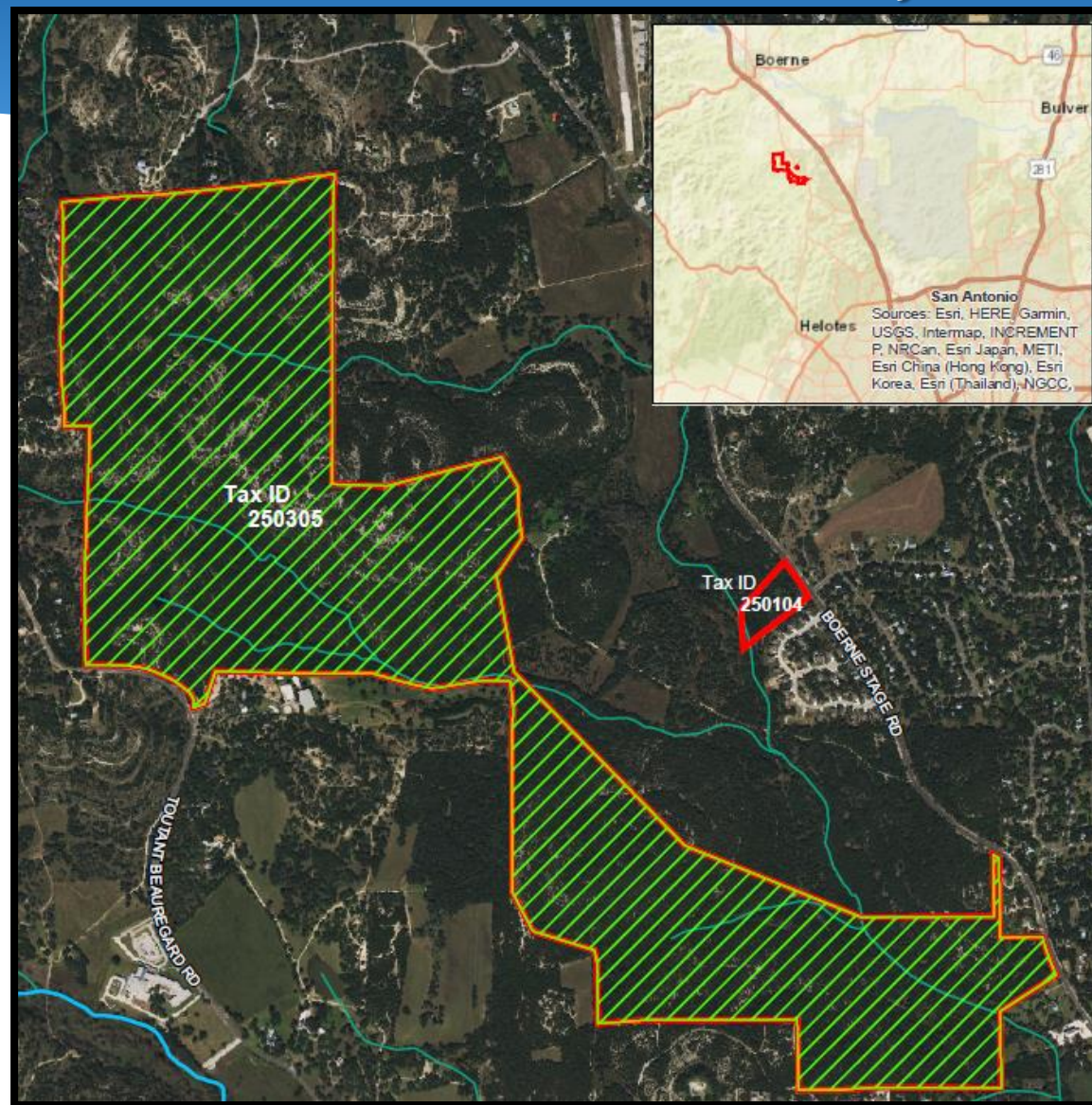


City of San Antonio

Edwards Aquifer Protection Program

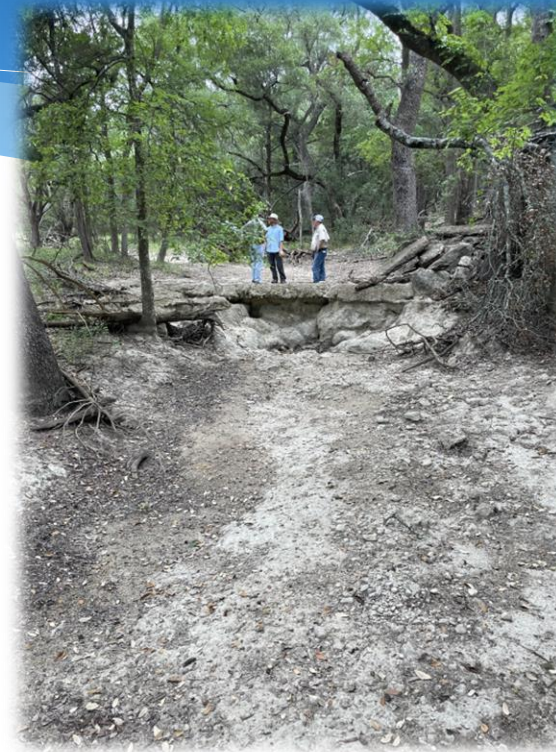
Maverick Ranch Project

Maverick Ranch Property (~6 acres) Bexar County



Maverick Ranch Property (~6 acres) Bexar County

- 100% EACZ
- Contains tributary of Leon Creek
- Located adjacent to 329-acre Maverick Ranch-Fromme Farm which is protected by a conservation easement through Texas Land Conservancy
- Pond Foundation to sell six-acre tract to Edwards Aquifer Authority (EAA); will donate non-contiguous 600+ acres to EAA w/conservation easement secured by The Nature Conservancy
- Pond Foundation and EAA are requesting EAPP to serve as Trustee to enforce restrictive covenants in deed.
 - No partitioning; one building envelope
 - No construction during Golden-Cheeked Warbler nesting season
- Requesting CAB approval to execute deed as Trustee
 - *City Council approval not required per City Attorney's Office*



Maverick Ranch Property (~6 acres) Bexar County



Maverick Ranch Property (~6 acres) Bexar County

