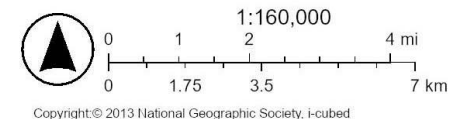
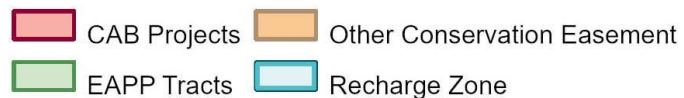
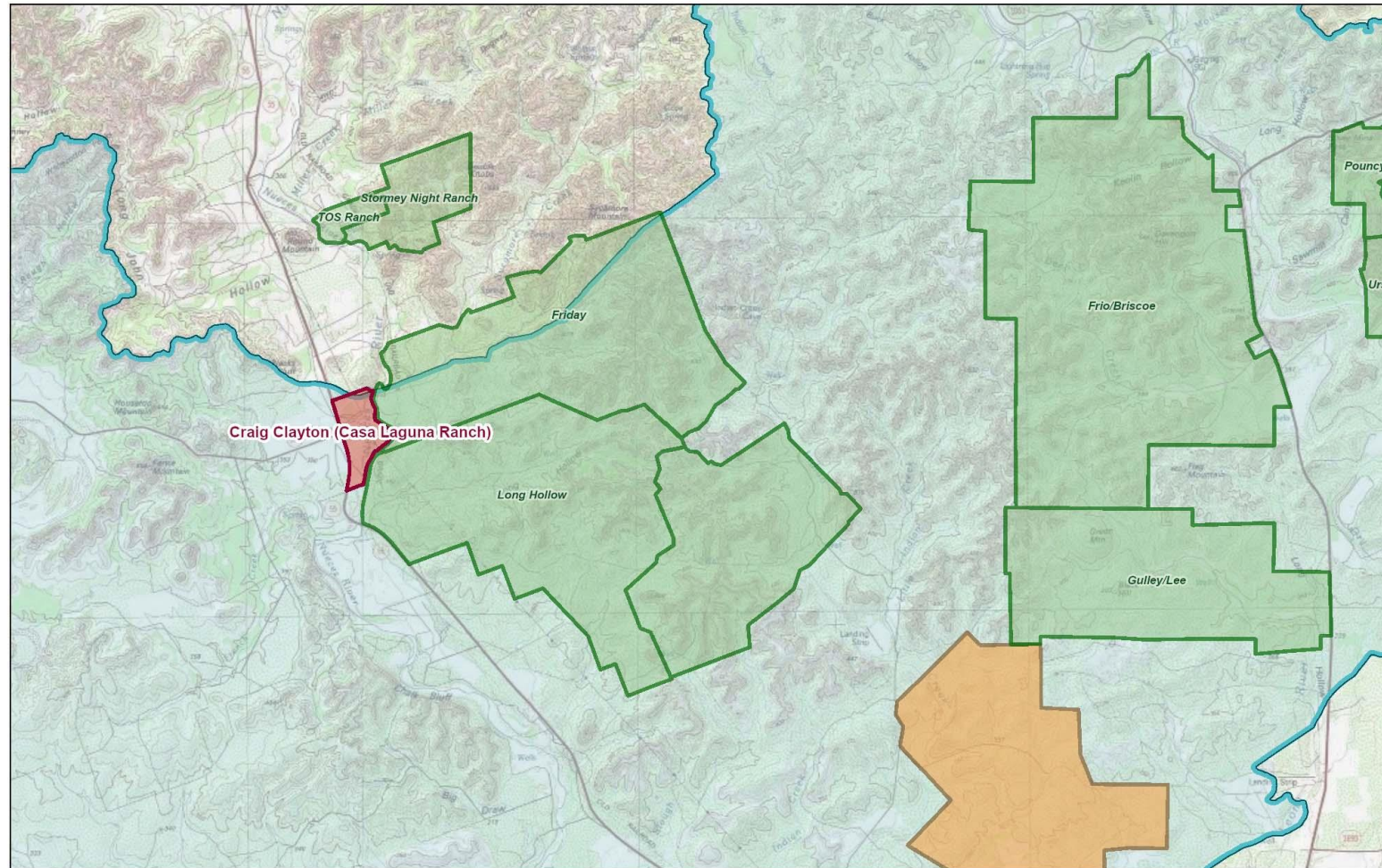




Casa Laguna Ranch (Craig Clayton)
Dry Frio River (Ferguson)
Trevino Property
Fush Creek Ranch

Casa Laguna Ranch (479.7 Acres) Uvalde County

Craig Clayton (Casa Laguna Ranch)



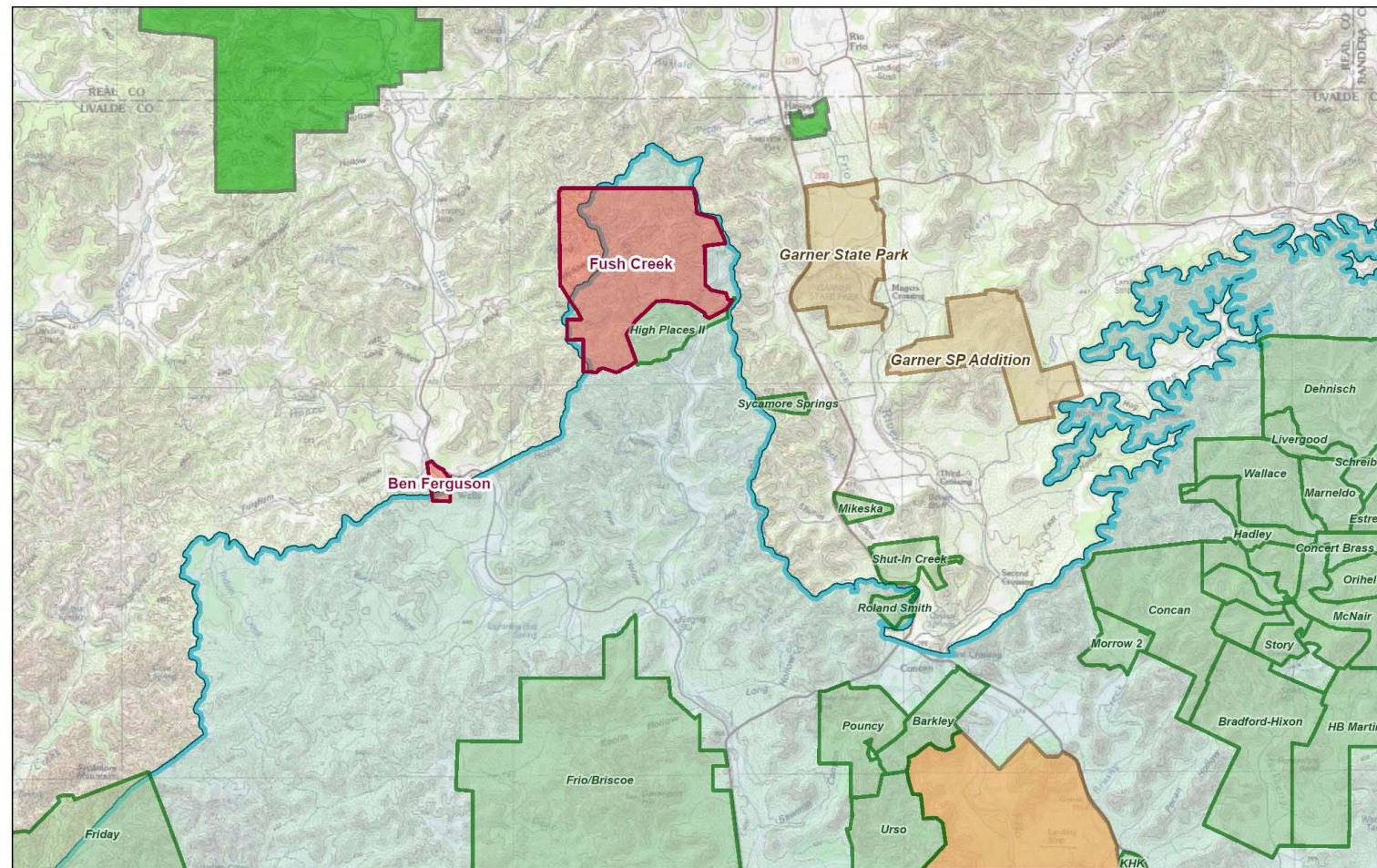
Casa Laguna Ranch (479.7 Acres) Uvalde County



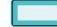
- Frontage on Nueces River at intersection with Recharge Zone; also has frontage on State Highway 55
- Top 40% in SET model
- Adjacent to Friday and Long Hollow easements
- **Requesting Stage 1 Consideration**

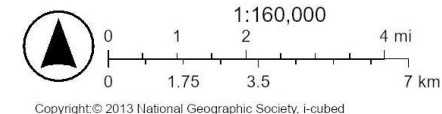


Ferguson Ranch (112 Acres) Uvalde County

Fush Creek Ranch and Ferguson (Dry Frio)



- | | |
|--|---|
|  CAB Projects |  Other Conservation Easement |
|  EAPP Tracts |  Texas Parks & Wildlife Department |
|  TNC |  Recharge Zone |



Ferguson Ranch (112 Acres) Uvalde County

- Includes both sides of Dry Frio River at intersection with Recharge Zone; also state highway frontage
- Top 30% in SET model
- **Requesting Stage 1 Consideration**



Ferguson Ranch (112 Acres) Uvalde County





Trevino Property (39.35 acres) Bexar County

- 100% EARZ
- Top 30% SET
- Located in Council Districts 9 and 10
- Contiguous with Yates Ranch property
- Owners seeking fee simple sale
- EAA ranked high for water quality and moderate for water quantity; appraisal completed
- Survey and Phase I ESA completed
- **Requesting Final Approval**

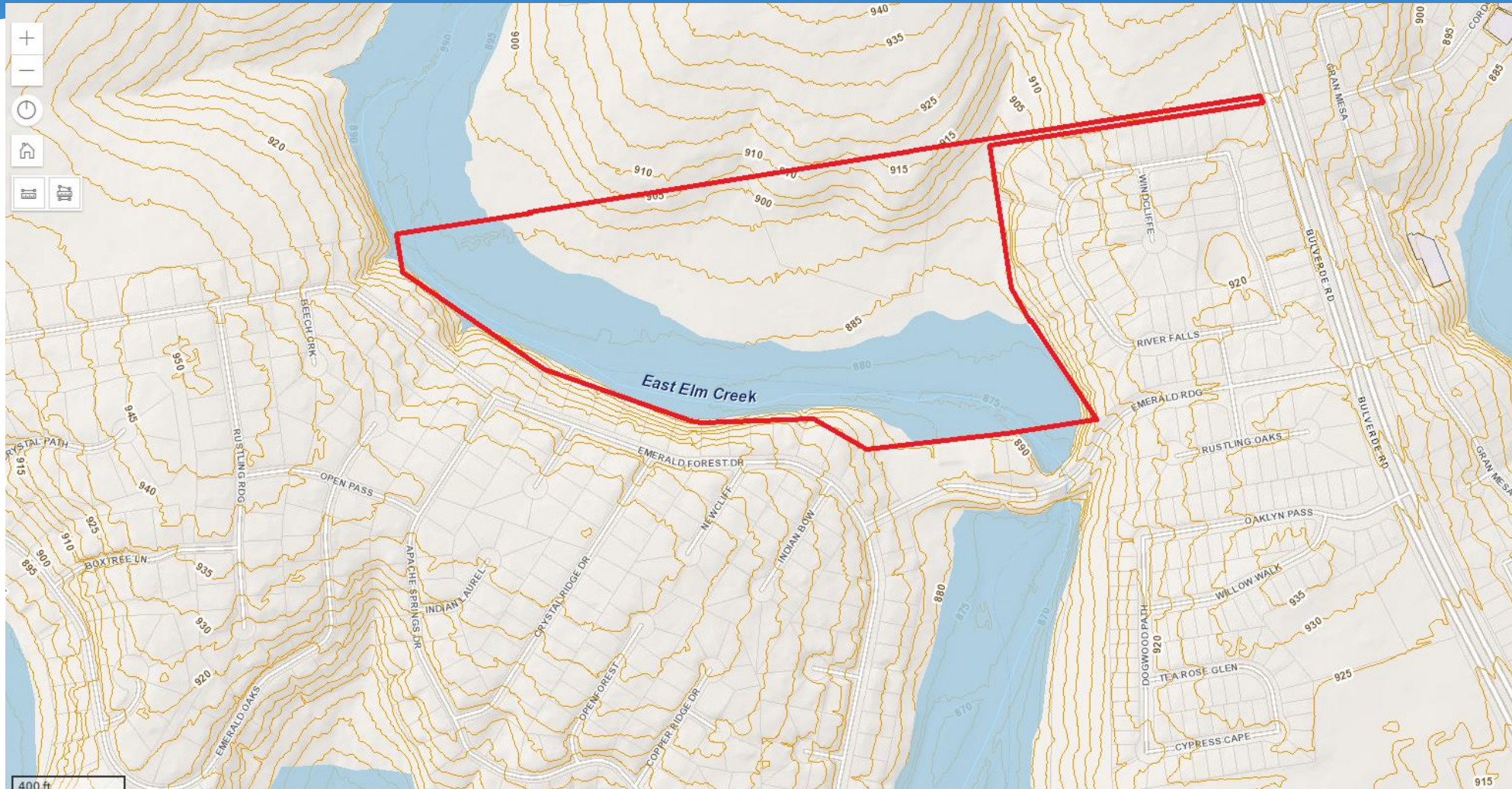




Trevino Property (39.35 acres) Bexar County



Trevino Property (39.35 acres) Bexar County

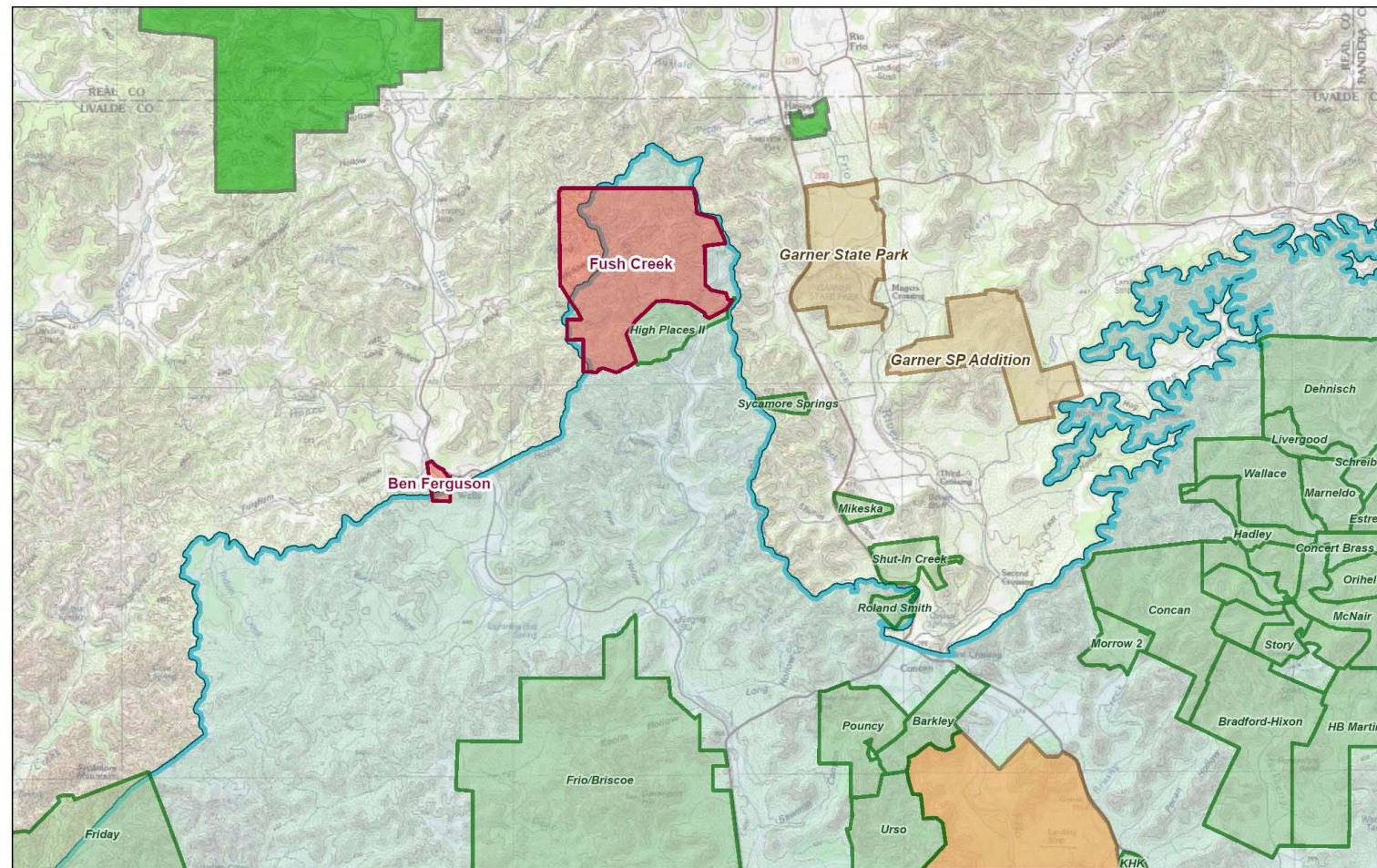




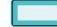
Trevino Property (39.35 acres) Bexar County

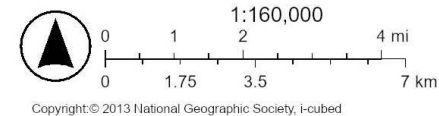


Fush Creek Ranch (3,656 Acres) Uvalde County

Fush Creek Ranch and Ferguson (Dry Frio)



- | | |
|--|---|
|  CAB Projects |  Other Conservation Easement |
|  EAPP Tracts |  Texas Parks & Wildlife Department |
|  TNC |  Recharge Zone |

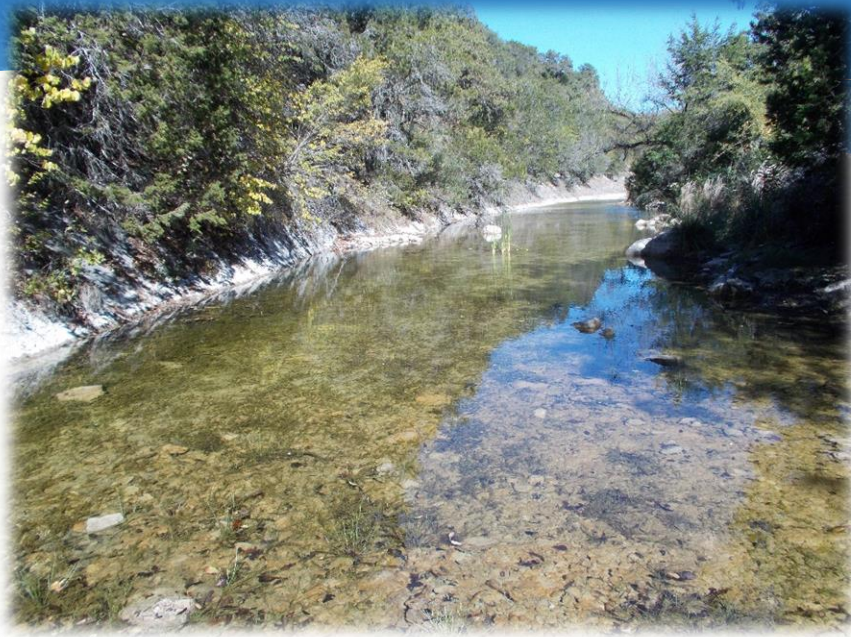


Fush Creek Ranch (3,656 acres) Uvalde County

- Previously evaluated at High Places Ranch in 2021
- Approx. 75% in EARZ
- Near Garner State Park and adjacent to High Places - Kaspar CE
- 50% of SET model
- Upper Frio River watershed
- EAA geological assessment ranked High for water quantity and Very high for water quality
- Requesting Stage 1A Consideration to update appraisal



Fush Creek Ranch (3,656 acres) Uvalde County





Fush Creek Ranch (3,656 acres) Uvalde County

