

Data Source: City of San Antonio Enterprise GIS, Bexar Metro 911, Bexar Appraisal District

"This Geographic Information System Product, received from The City of San Antonio is provided 'as is' without warranty of any kind, and the City of San Antonio expressly disclaims all known and implied warranties, including but not limited to the implied warranties of merchantability and fitness for a particular purpose. The City of San Antonio does not warrant, guarantee, or make any representation regarding the use, or the results of the use, of the information provided to you by the City of San Antonio in terms of correctness, accuracy, reliability, timeliness or otherwise. The entire risk as to the results and performance of any information obtained from the City of San Antonio is entirely assumed by the recipient."

Map Created by: Gustavo Gutierrez
Map Creation Date: 11/26/2024
Map File Location: \\sacommnet\\misc29\\GIS\\Pin50\\plan_\\lib\\Archived\\Neighborhoods\\Land_Use\\Amendments\\Amend_2411600093_HuebnerLeonCreek_85W.mxd
PDF Filename: 2411GG



200' Notification Area



Proposed Land Use Change



Low Density Residential



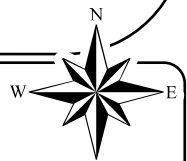
Office



Neighborhood Mixed Use



City of San Antonio



0 100 200 Feet

Huebner/ Leon Creeks Community Plan Proposed Plan Amendment 2411600093 Area

City of San Antonio
Development Services
Department
Amin Tohmaz, PE, CBO



City of San Antonio
Development and
Business Services Center
PO Box 859565
San Antonio, TX 78283