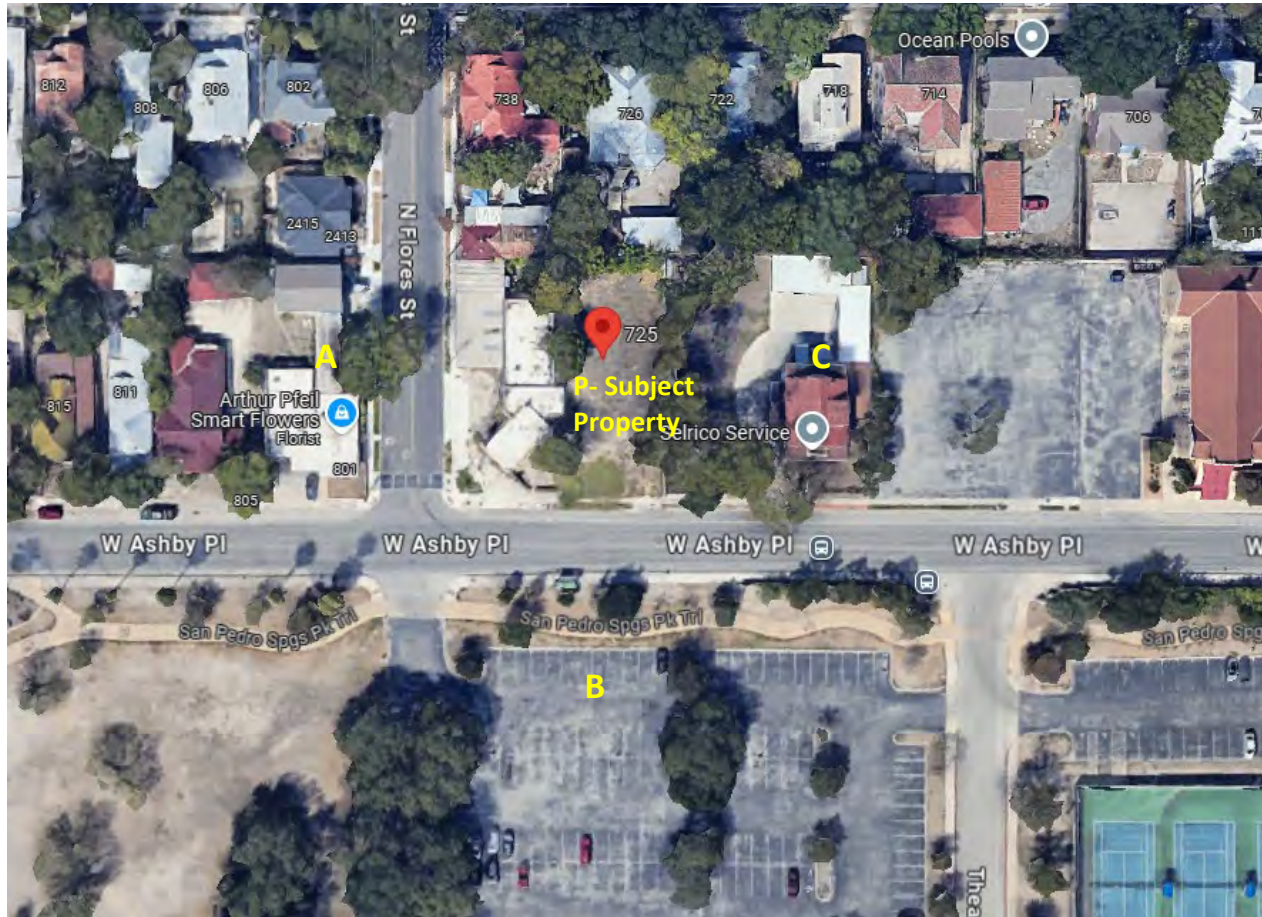


**741/725 W Ashby**  
Ground Plan Comparison Form



Address:	Setback to Structure	Setback to Porch (If Applicable)	Setback to Left Property Line:	Setback to Right Property Line:	Building Height:
<b>P:</b>	<b>15'</b>	<b>NA</b>	<b>15'</b>	<b>5'</b>	<b>1-2 stories</b>
A: 801 W Ashby	~12'	NA	~15'	~0'	1 commercial story
B: 2200 N Flores St	Vacant (Parking)				
C: 335 W Poplar	~36.5'	~26.5'	~32'	~5'	2.5 stories