



Edwards Aquifer Protection Program Conservation Easement Acquisition

City Council

November 7, 2024

Parks and Recreation Department

Conservation Easement Acquisition

Property	County	Acres	Cost
TOS Ranch (Stoner Ranch Division 3)	Uvalde	297.54	\$1,307,014.95

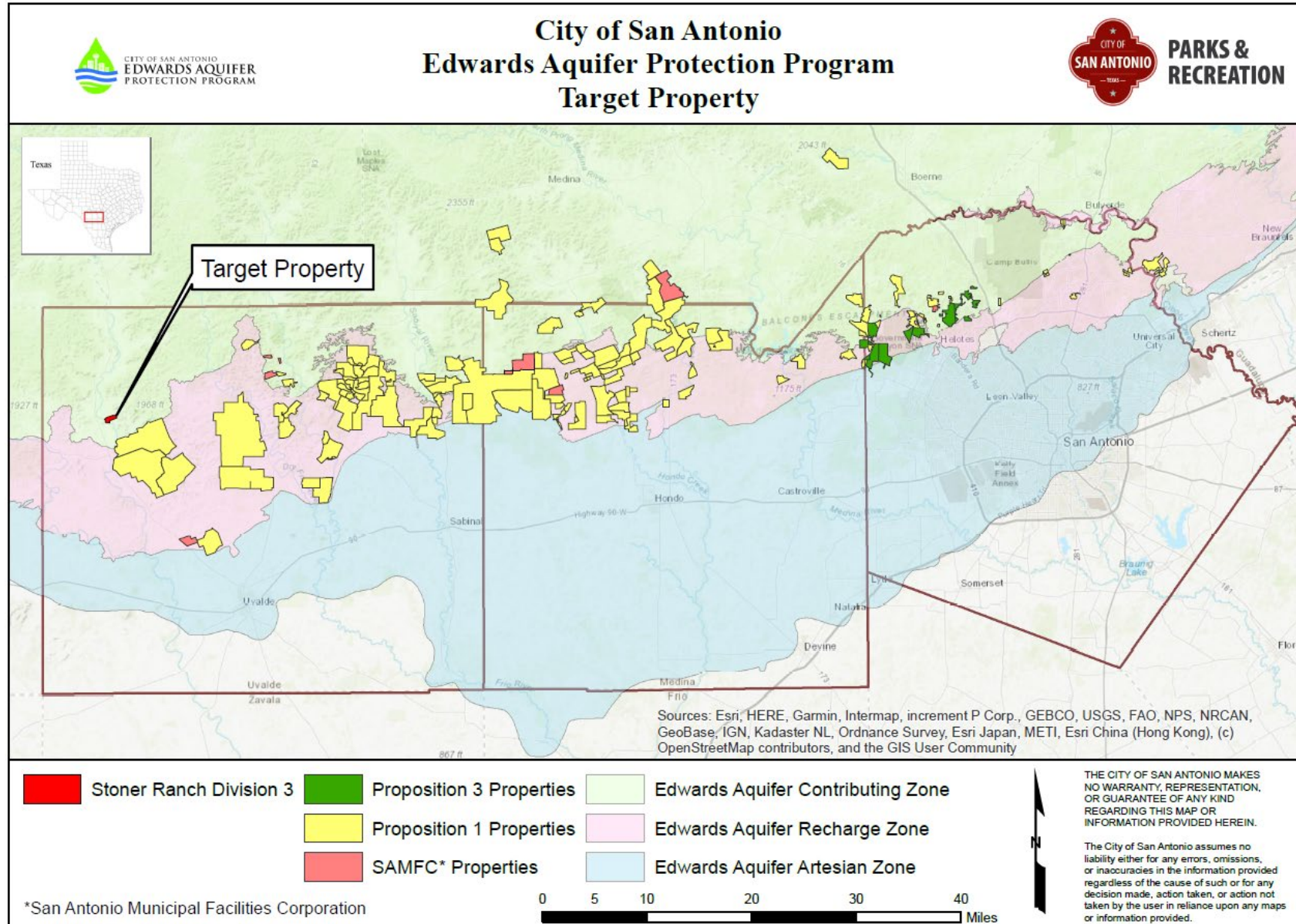


Acquisition Benefits

- Property located over the Edwards Aquifer Contributing Zone in Uvalde County
- Important recharge features on property
- High water quantity and high water quality benefits
- Results in increase of 297.54 acres



Total Land Protected = 185,193 acres



Program Status

- 186,866 acres protected with approval of today's proposed acquisitions
- To date, City Council has approved the acquisition of 133 conservation easements and 25 fee simple purchases
- Propositions 1 and 3 sales tax fully expended
- 10-year, \$100M acquisition program approved in 2020 under SAMFC
 - \$30M in debt issued in August 2023 for FY 2023 – 2025 acquisitions
 - \$16.8M committed to date to protect 6,942 acres

Recommendation

- Staff recommends approval